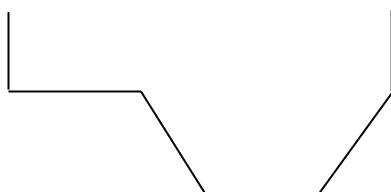


b_{kyn} 10 m
 b_{ber} 5 m
 h_{kyn} 1 m

 m 2 -
 i 0.002 -

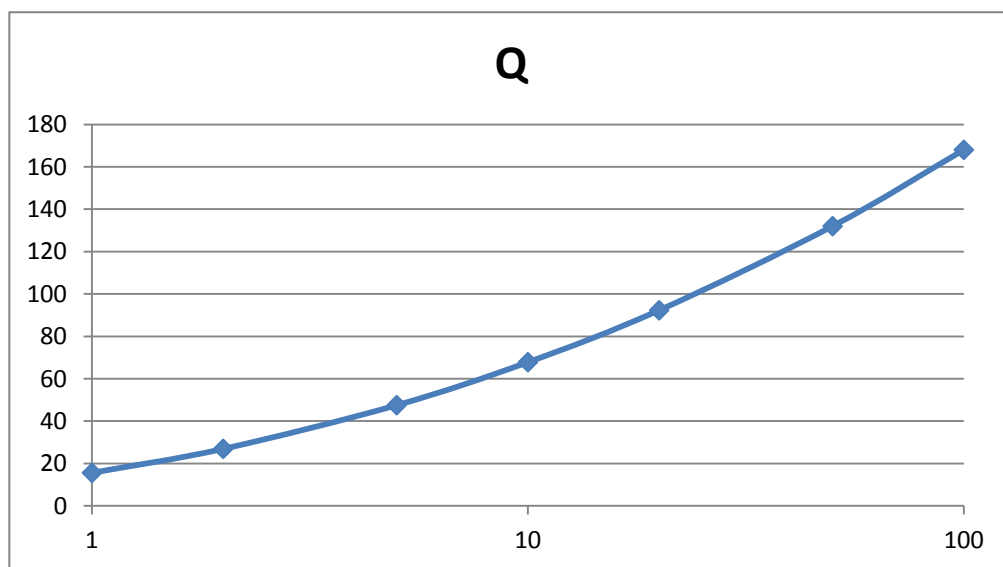
 n_k 0.025 - štěrk
 n_b 0.035 - tráva
 n_v 0.010 - voda



N
1
2
5
10
20
50
100

KYNETA								BERMA				
h	A	O	R	n	C	v	Q	h	A	O	R	n
m	m ²	m	m	-	m ^{0.5} /s	m/s	m ³ /s	m	m ²	m	m	-
0.1	1.02	10.45	0.10	0.025	27.1	0.4	0.4					
0.2	2.08	10.89	0.19	0.025	30.4	0.6	1.2					
0.3	3.18	11.34	0.28	0.025	32.4	0.8	2.4					
0.4	4.32	11.79	0.37	0.025	33.8	0.9	4.0					
0.5	5.50	12.24	0.45	0.025	35.0	1.0	5.8					
0.6	6.72	12.68	0.53	0.025	36.0	1.2	7.9					
0.7	7.98	13.13	0.61	0.025	36.8	1.3	10.2					
0.8	9.28	13.58	0.68	0.025	37.5	1.4	12.9					
0.9	10.62	14.02	0.76	0.025	38.2	1.5	15.8					
1.0	12.00	14.47	0.83	0.025	38.8	1.6	18.9					
1.1	13.40	14.67	0.91	0.025	39.7	1.7	22.8	0.1	0.50	5.10	0.10	0.035
1.2	14.80	14.87	1.00	0.025	40.6	1.8	26.8	0.2	1.00	5.20	0.19	0.035
1.3	16.20	15.07	1.07	0.024	41.5	1.9	31.2	0.3	1.50	5.30	0.28	0.035
1.4	17.60	15.27	1.15	0.024	42.3	2.0	35.7	0.4	2.00	5.40	0.37	0.035
1.5	19.00	15.47	1.23	0.024	43.1	2.1	40.5	0.5	2.50	5.50	0.45	0.035
1.6	20.40	15.67	1.30	0.024	43.8	2.2	45.6	0.6	3.00	5.60	0.54	0.035
1.7	21.80	15.87	1.37	0.024	44.5	2.3	50.9	0.7	3.50	5.70	0.61	0.035
1.8	23.20	16.07	1.44	0.024	45.2	2.4	56.4	0.8	4.00	5.80	0.69	0.035
1.9	24.60	16.27	1.51	0.023	45.9	2.5	62.1	0.9	4.50	5.90	0.76	0.035
2.0	26.00	16.47	1.58	0.023	46.6	2.6	68.0	1.0	5.00	6.00	0.83	0.035

NEPROTÉKÁ BERMA



Q
15.6
26.9
47.5
67.8
92.3
132
168

			CELKEM
C	v	Q	$\sum Q$
$m^{0.5}/s$	m/s	m^3/s	m^3/s
			0.4
			1.2
			2.4
			4.0
			5.8
			7.9
			10.2
			12.9
			15.8
			18.9
19.4	0.3	0.1	22.9
21.7	0.4	0.4	27.2
23.2	0.6	0.8	32.0
24.2	0.7	1.3	37.0
25.1	0.8	1.9	42.4
25.7	0.8	2.5	48.1
26.3	0.9	3.2	54.1
26.9	1.0	4.0	60.4
27.3	1.1	4.8	66.9
27.7	1.1	5.7	73.7

OU