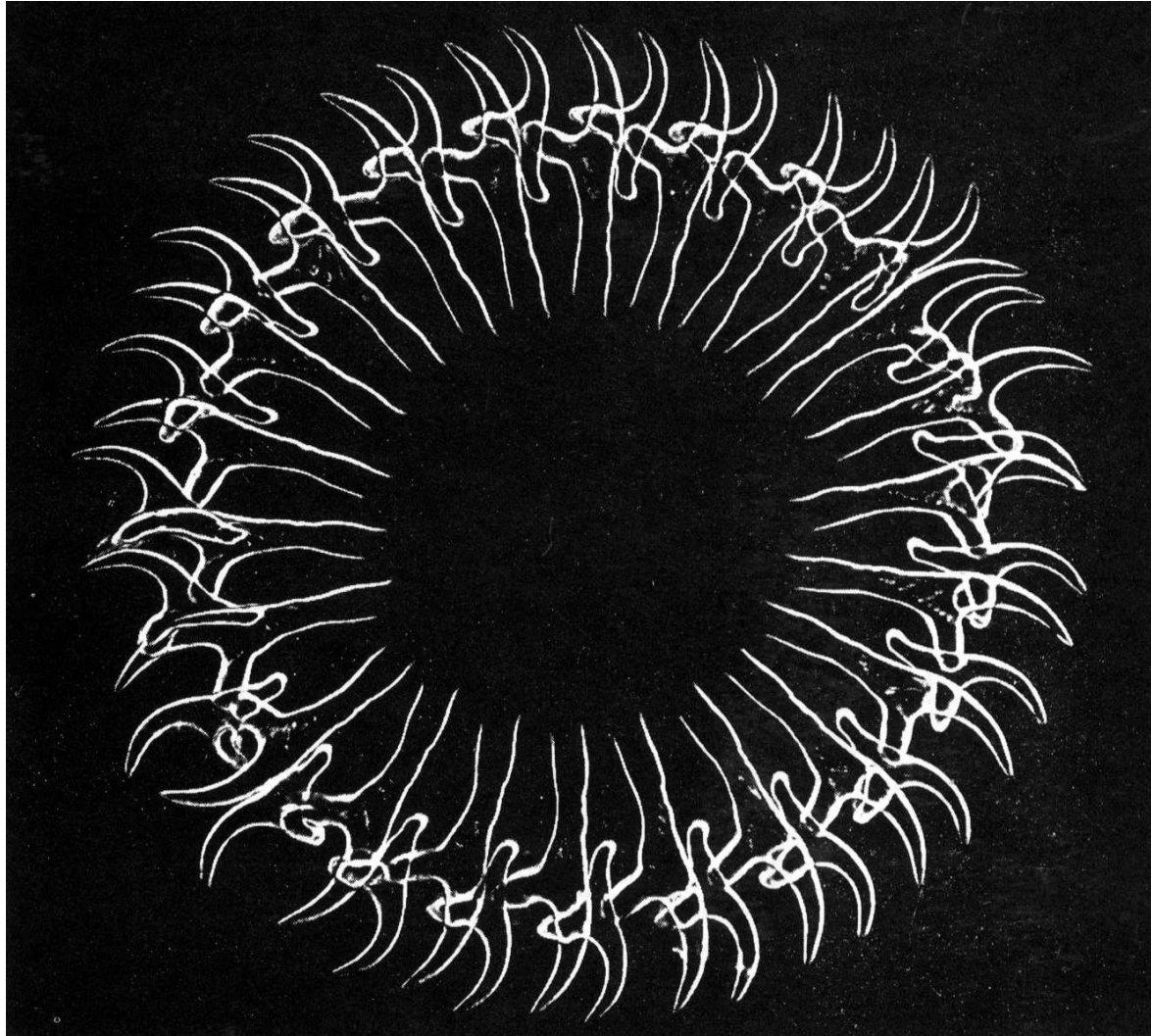


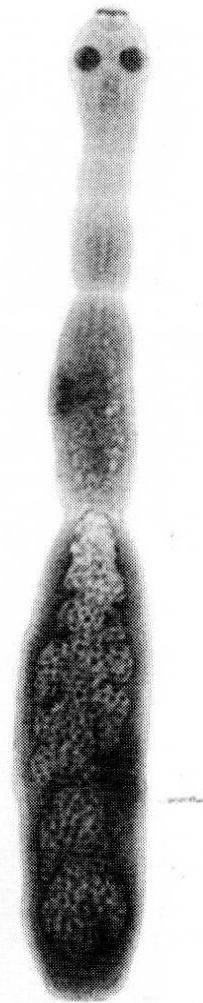
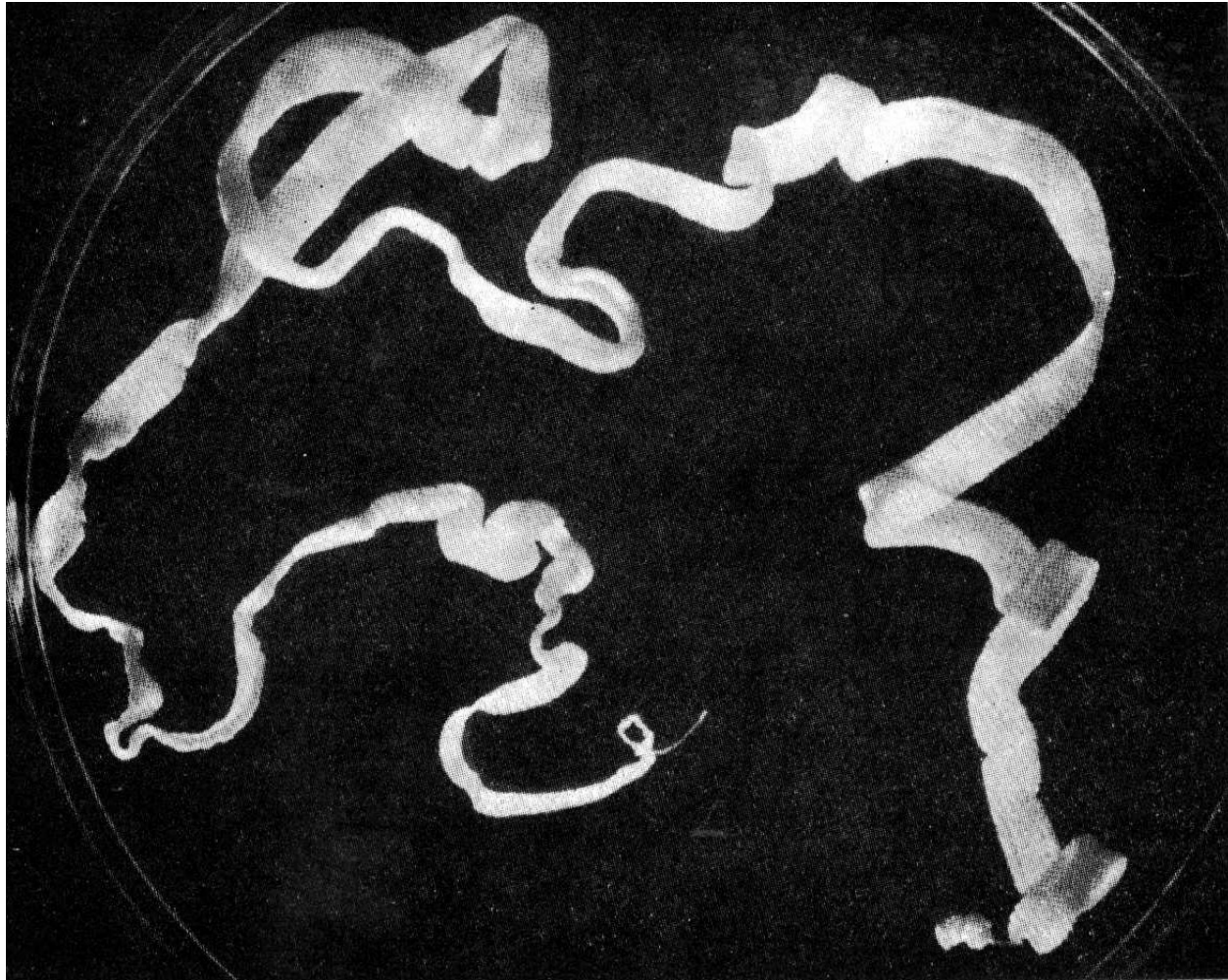
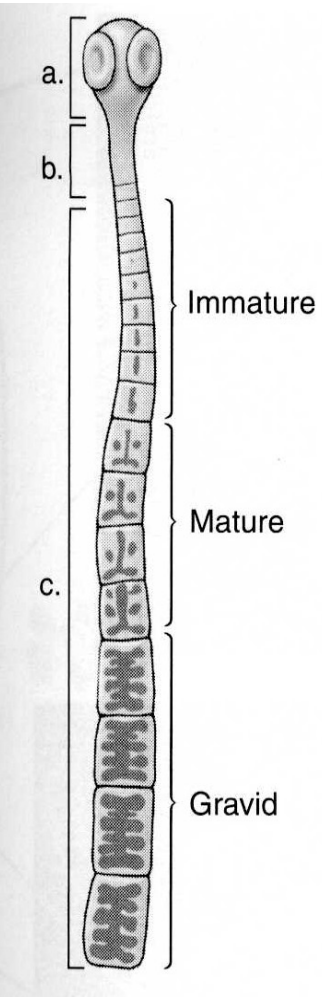
Tasemnice I



Tasemnice - charakteristika

- Výhradně parazitická skupina
- Absence střeva
- Larvy s embryonálními háčky
 - 10 lycofóra - Cestodaria
 - 6 hexacanth – Eucestoda
- Medicínsky a veterinárně významné
- Popsáno přes 4000 druhů – nejvíce řádů u ryb
- Nejpočetnější řád – Cyclophyllidea – ptáci a savci

Scolex, krček, strobila



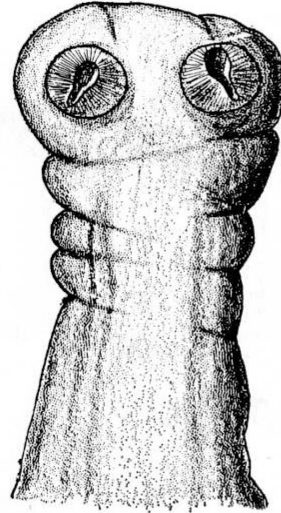
Tasemnice - morfologie

- Hlavička – scolex – přichycovací orgán
- Strobila – proglotidy (segmenty)
- Přichycovací orgány – 5 základních typů:
 - Mělké zářezy a rýhy – Caryophyllidea
 - Štěrbiny – bothrie – Pseudophyllidea
 - Svalnaté bothridie – Tetraphyllidea
 - Chapadélka – tentakule – Trypanorhyncha
 - Svalnaté přísavky - Cyclophyllidea

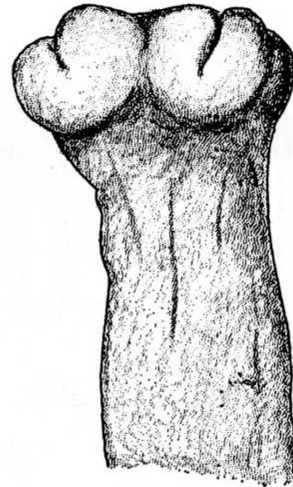
Typy scolexů tasemnic



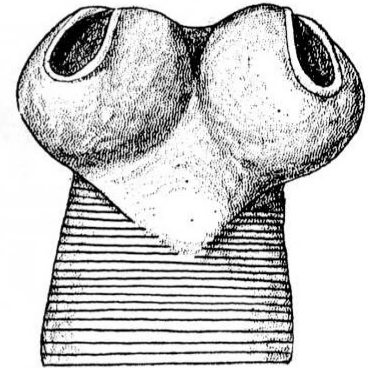
A



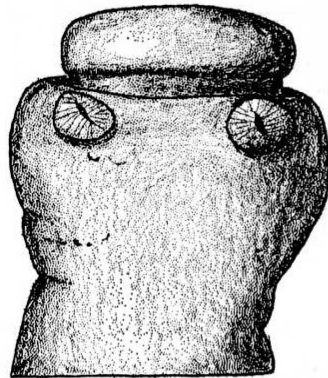
B



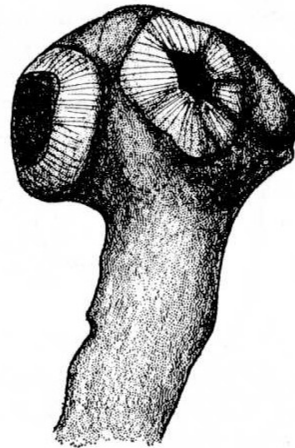
C



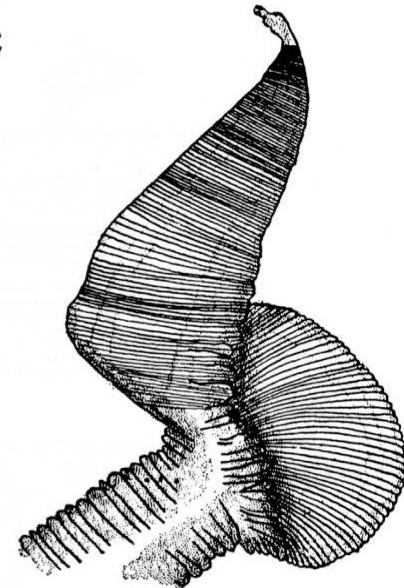
D



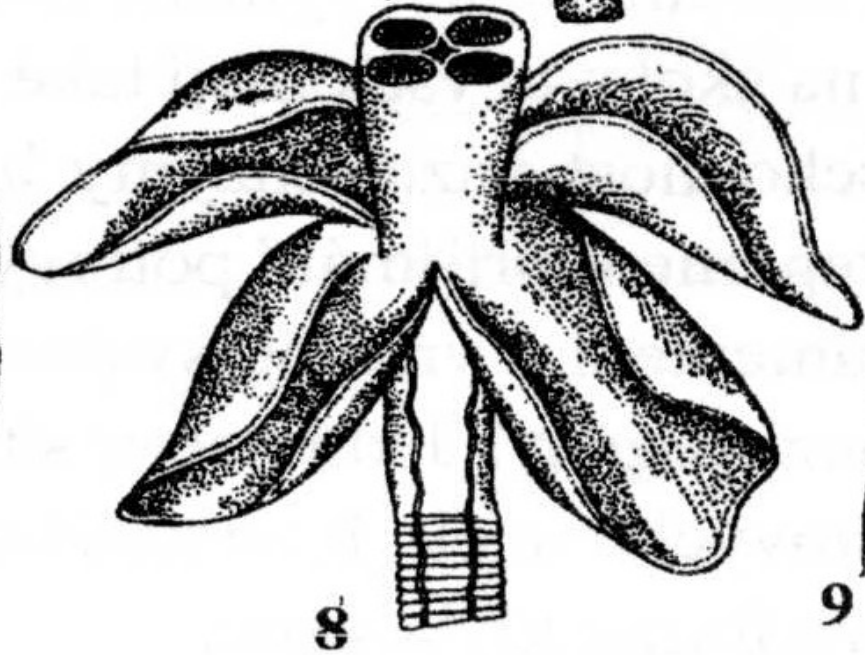
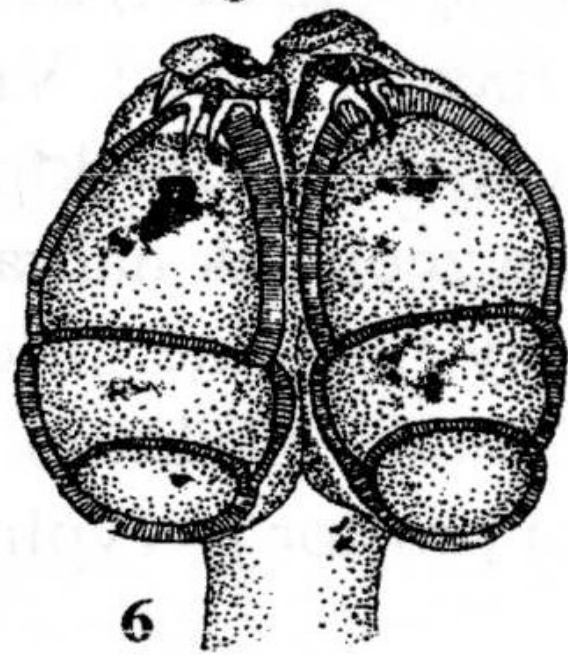
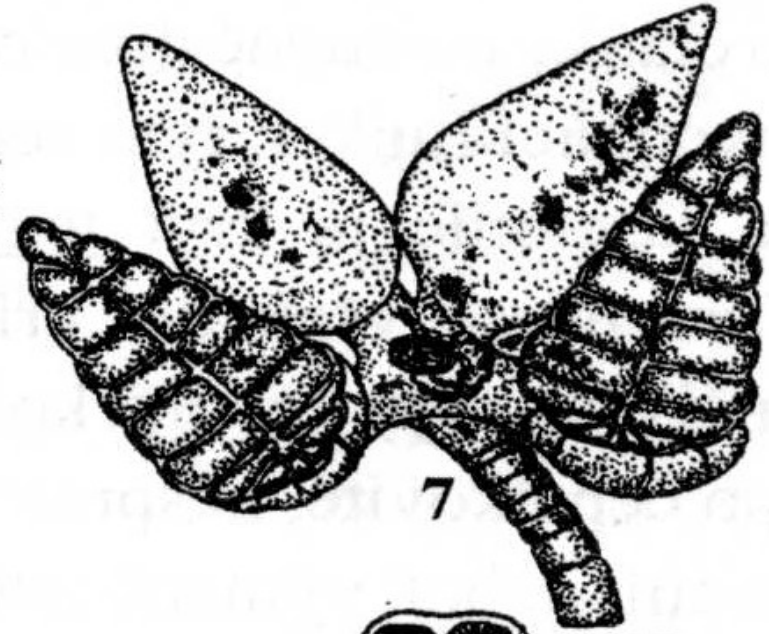
E



F

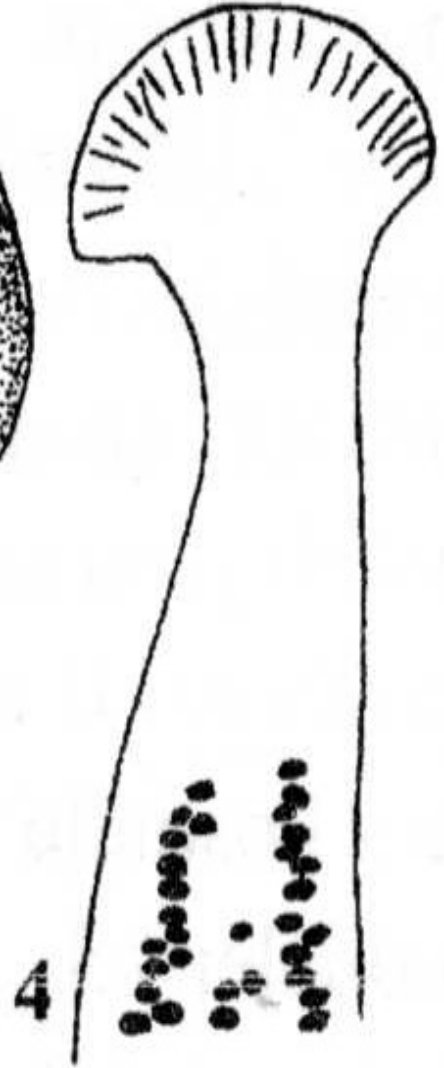
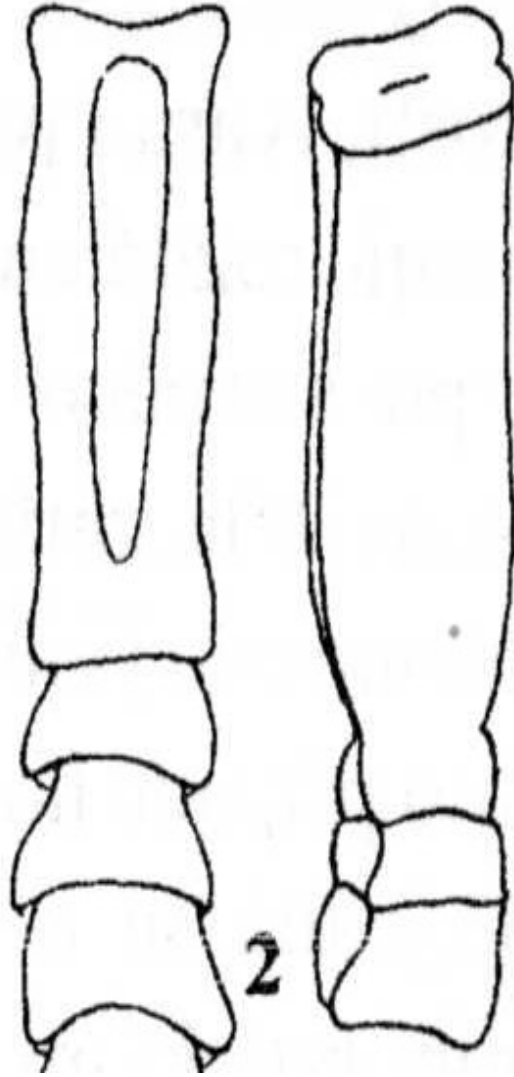
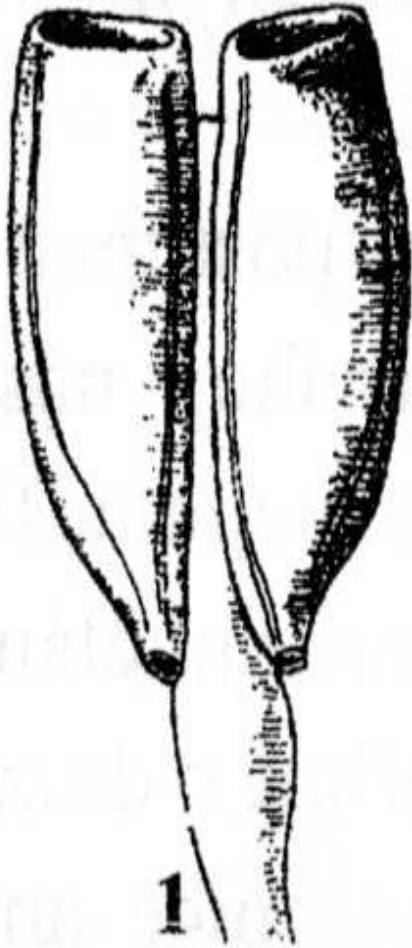


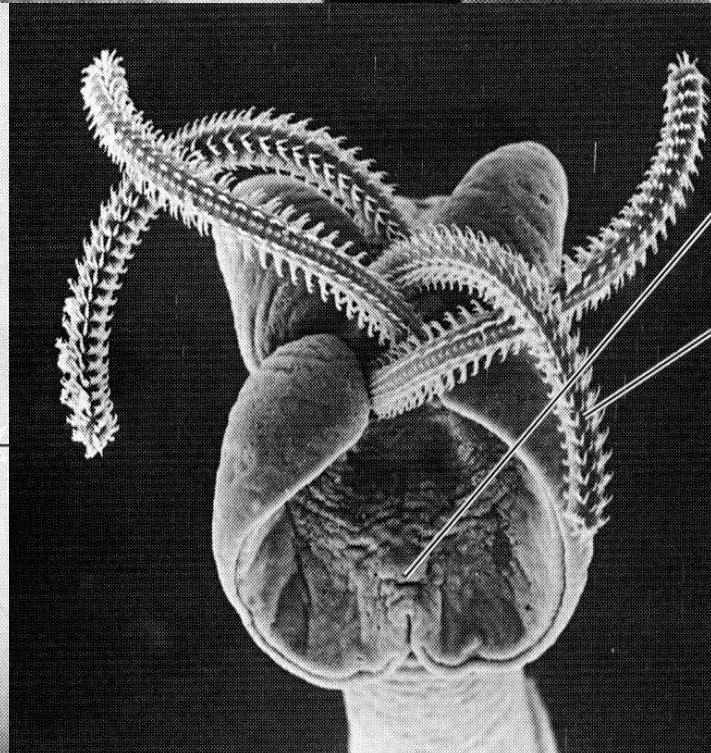
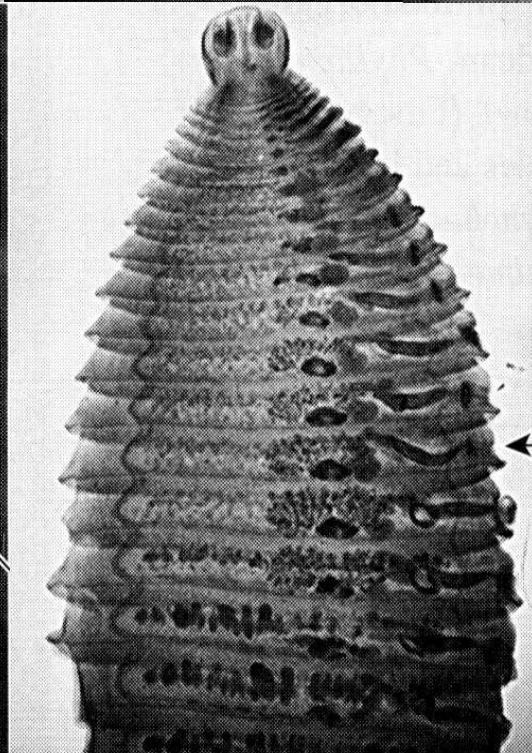
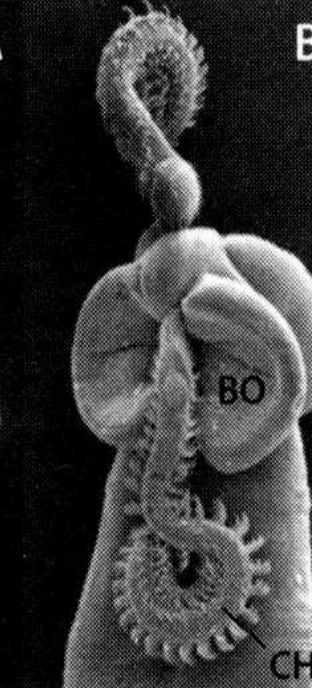
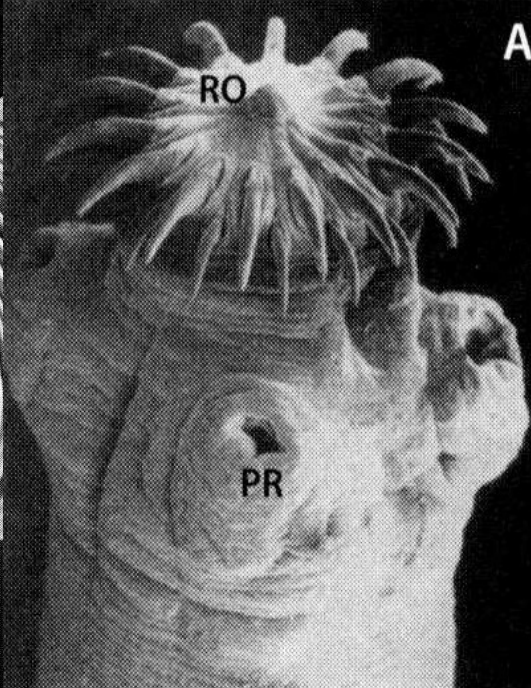
G



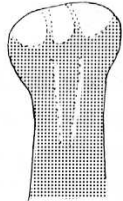
8

9

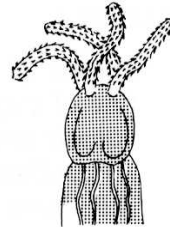




Scolexy různých řádů tasemnic



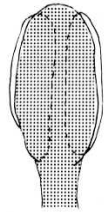
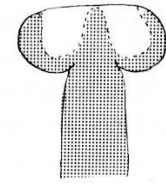
CARYOPHYLLIDEA



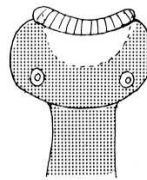
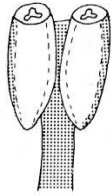
TRYPANORHYNCHA



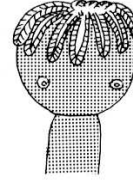
SPATHEBOTHRIIDEA



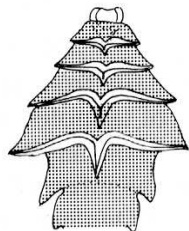
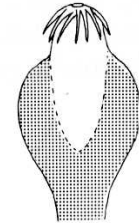
PSEUDOPHYLLIDEA



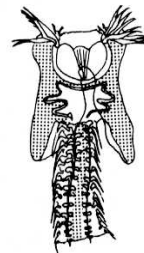
LECANICEPHALIDEA



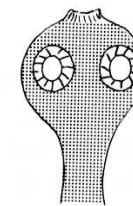
APORIDEA



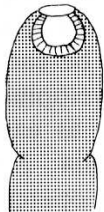
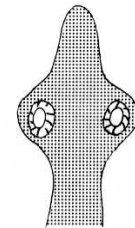
LITOBOTHRIDEA



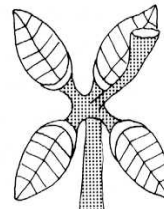
DIPHYLLIDEA



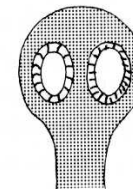
PROTEOCEPHALATA



NIPPOTAENIDEA



TETRAPHYLLIDEA



CYCLOPHYLLIDEA

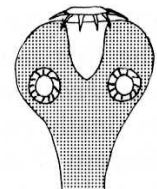
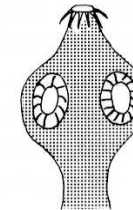
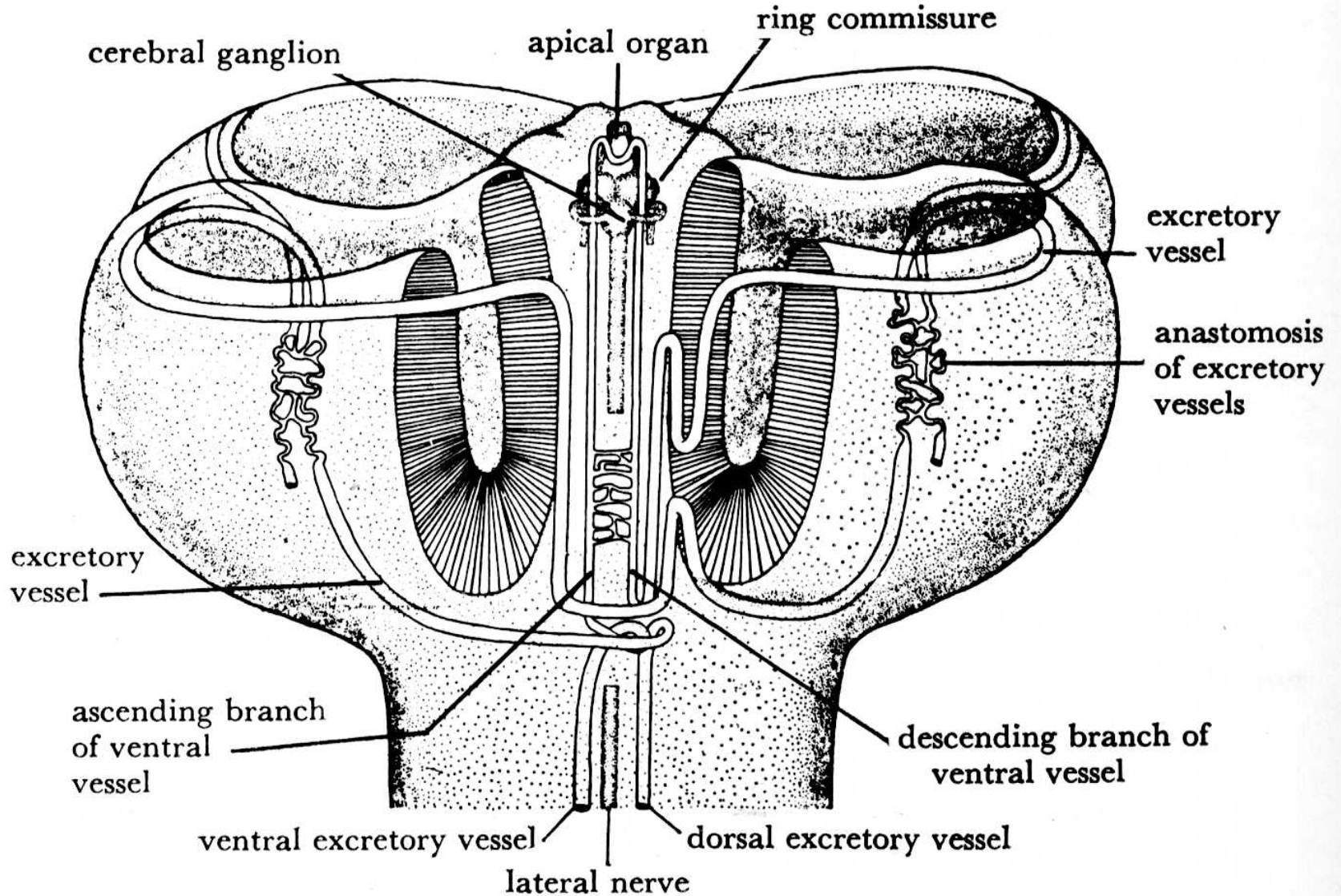


Fig. 1.48. Diagrammatic representation of scolices in different orders of tapeworm

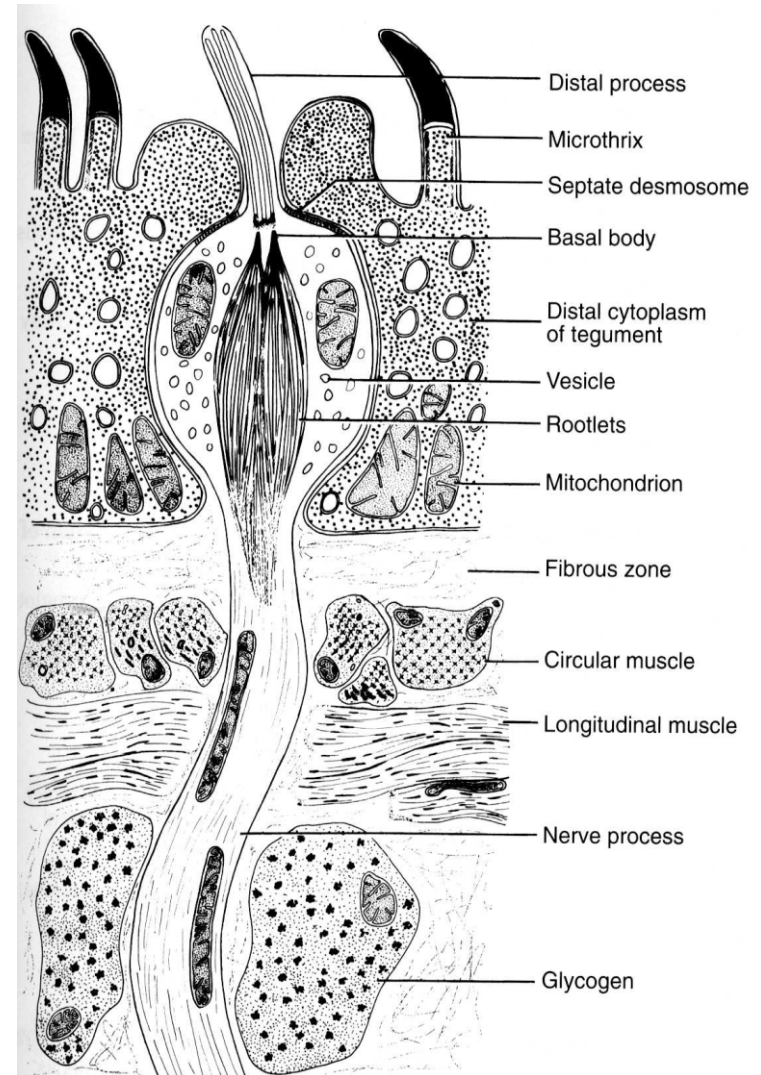
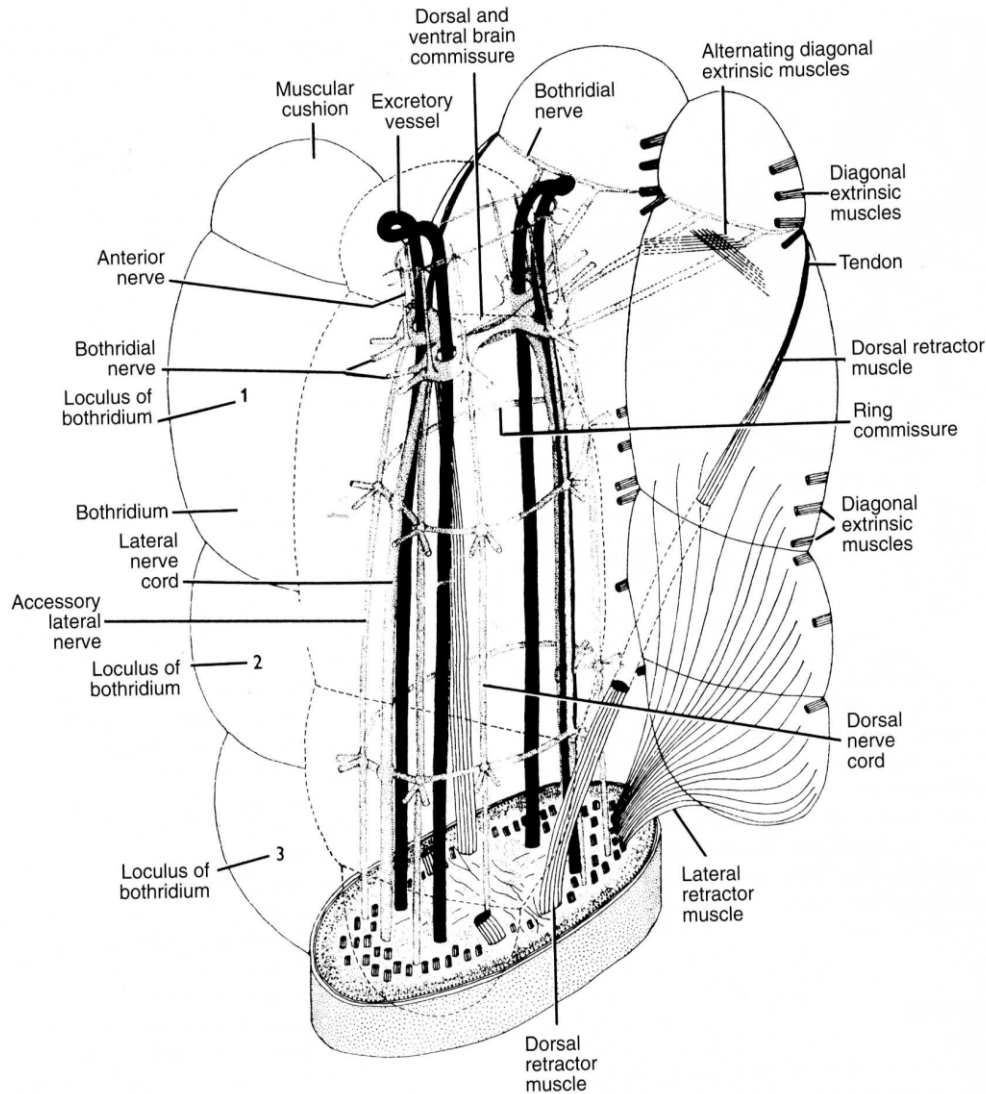
Tasemnice - anatomie

- Scolex – krček - germinativní zóna
- Strobila – proglotidy – články:
 - Apolytické články – odškrcovány články s vajíčky
 - Anapolytické články – vajíčka jsou oddělována s neodělených článků
- Tegument – povrch těla
- Parenchym - pojivová tkáň
- Svalovina (tři vrstvy)
- Nervová soustava
- Exkreční soustava – protonefridie
- Pohlavní soustava – hermafroditi
- Příjem potravy – povrchem těla

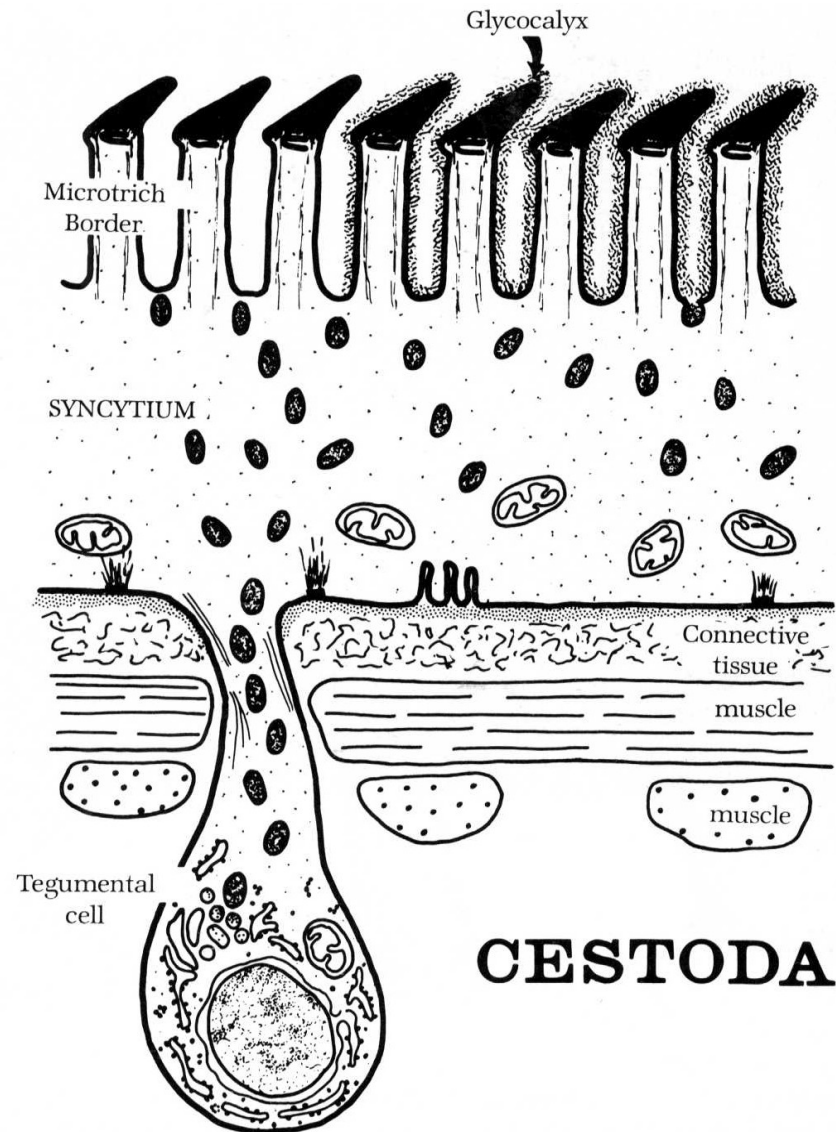
Schéma scolexu tase mnice



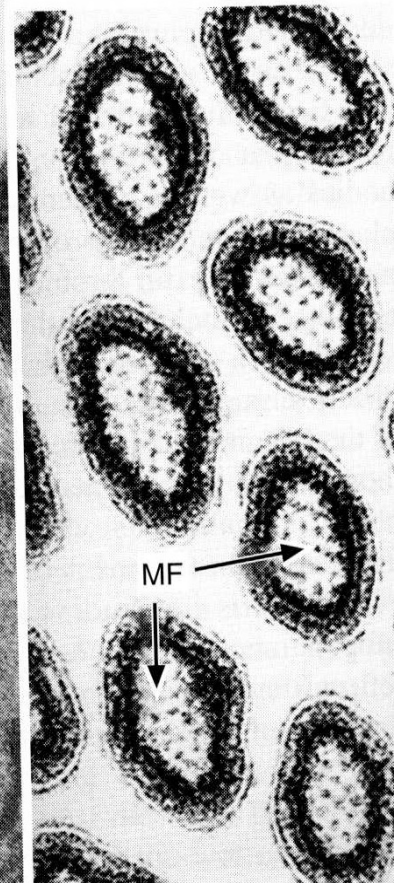
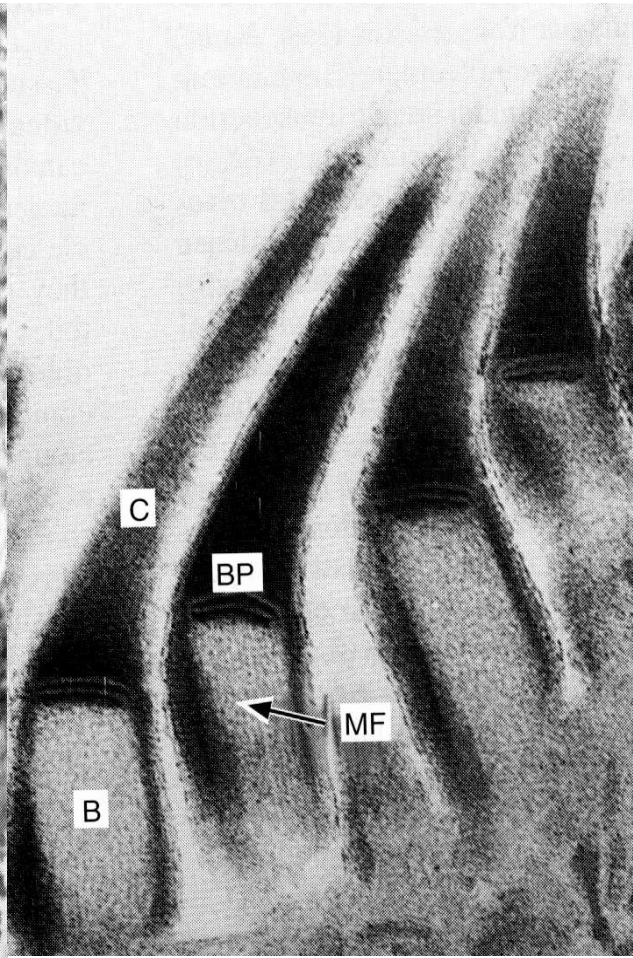
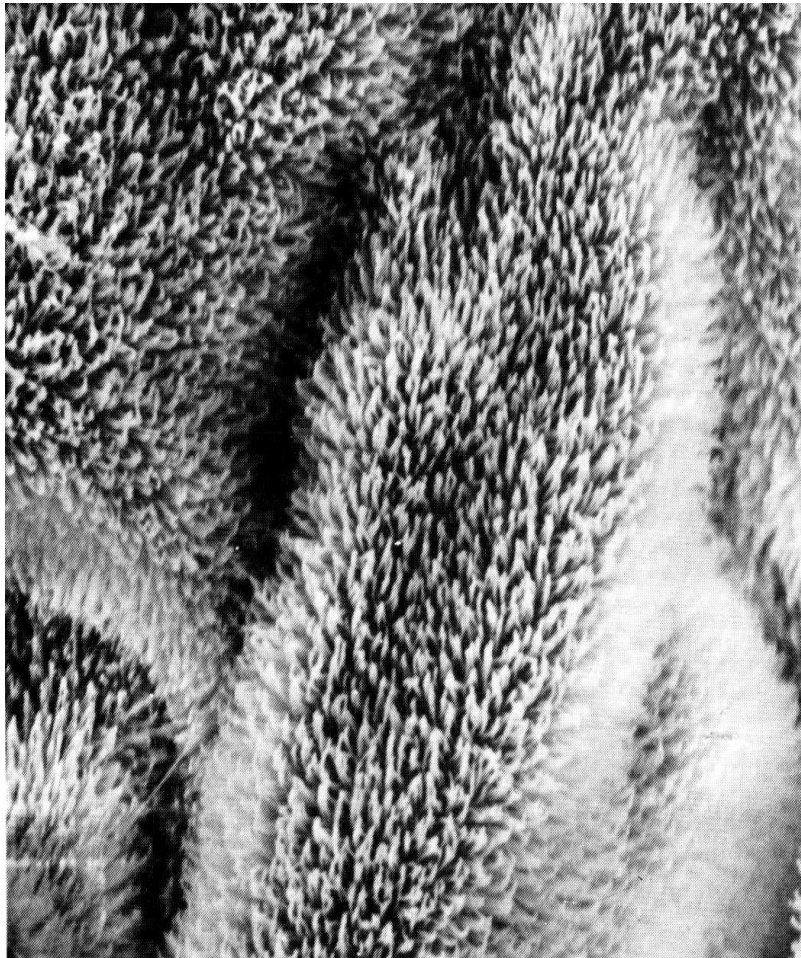
Smyslové orgány na scolexu



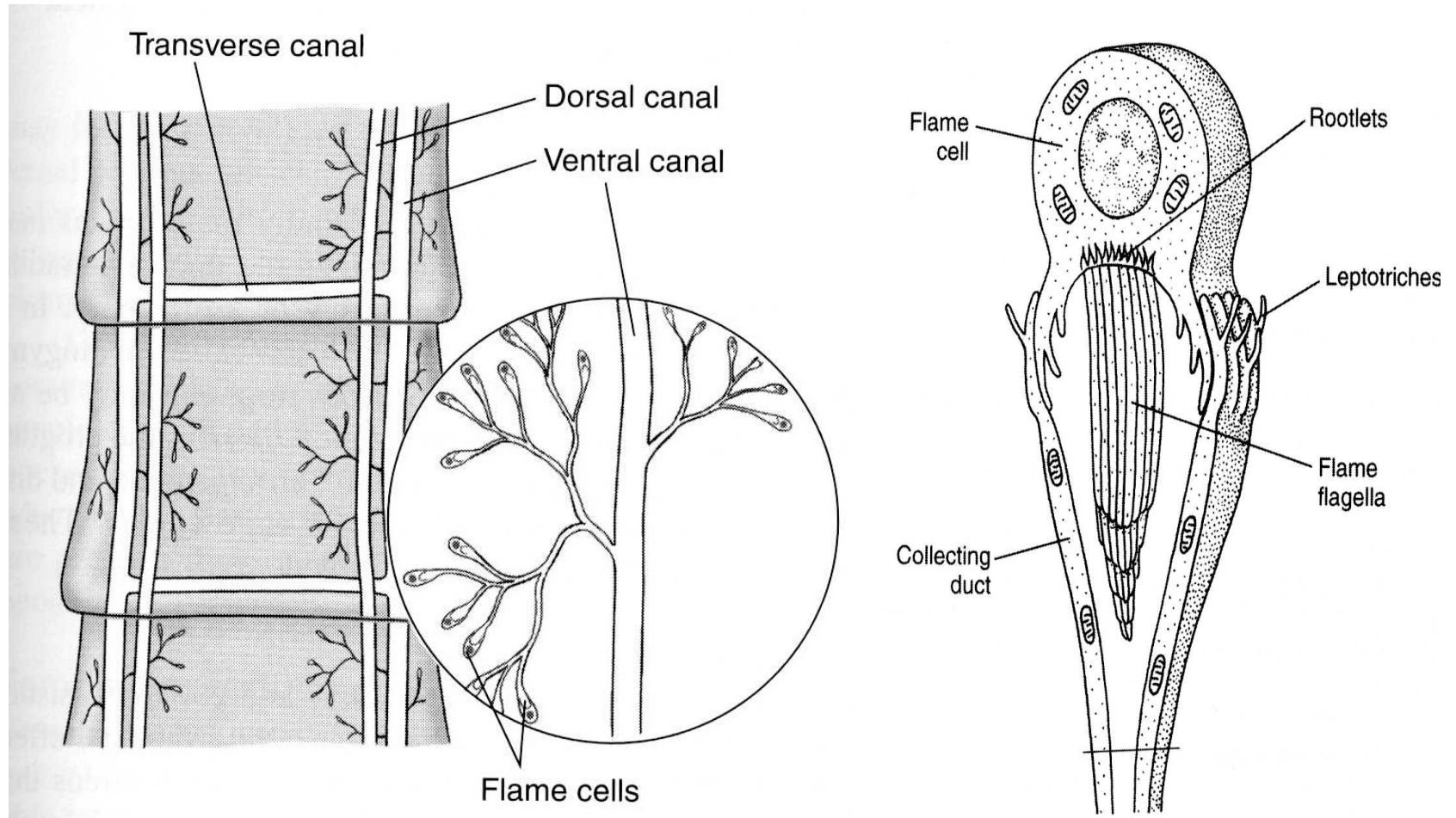
Tegument – povrch těla

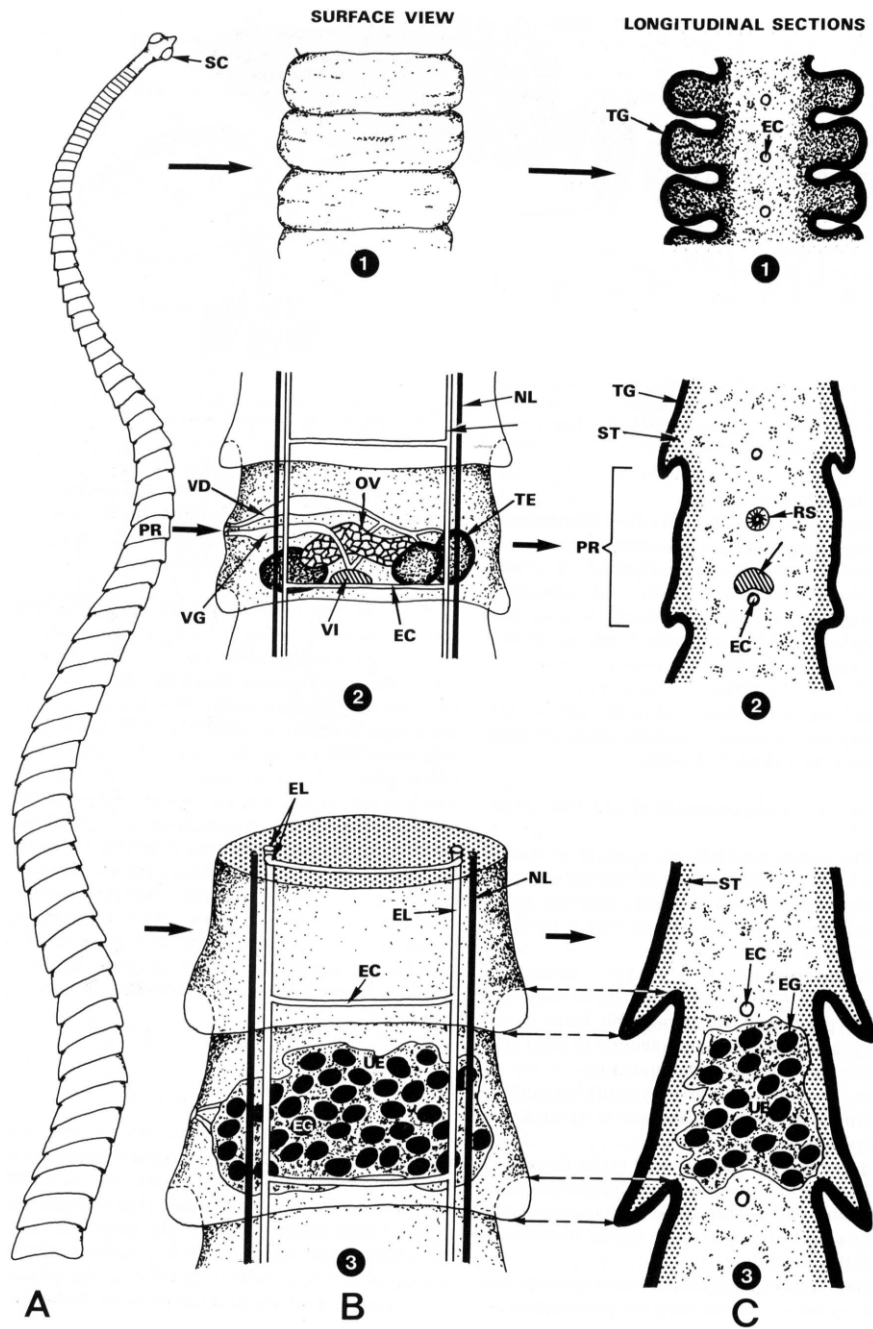


Mikrotrichy

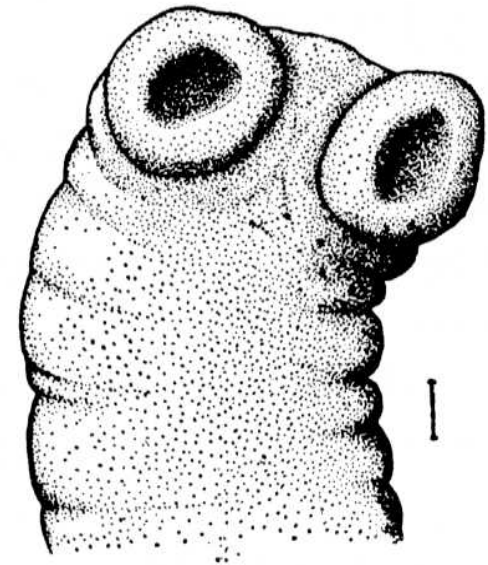


Exkreční soustava tasemnice





Anatomie strobily tasemnice



A
Fig. 3.98

B

C

Tasemnice – pohlavní soustava

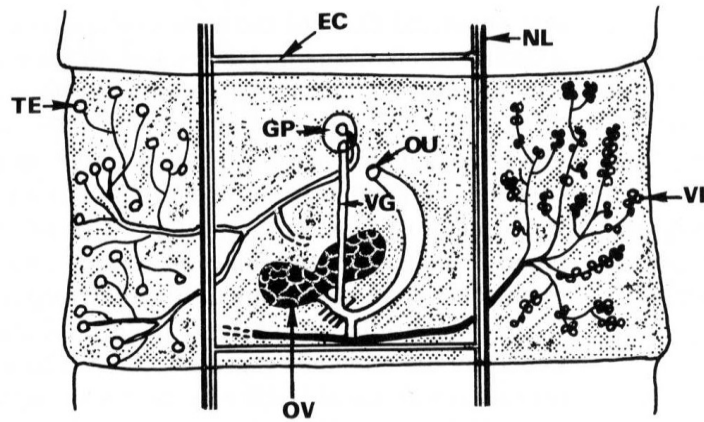
Samčí:

- Varlata – testes
- Vasa efferentia
- Vas deferens
- Vesicula seminalis
- Ductus ejaculatorius
- Cirrus a cirrový váček

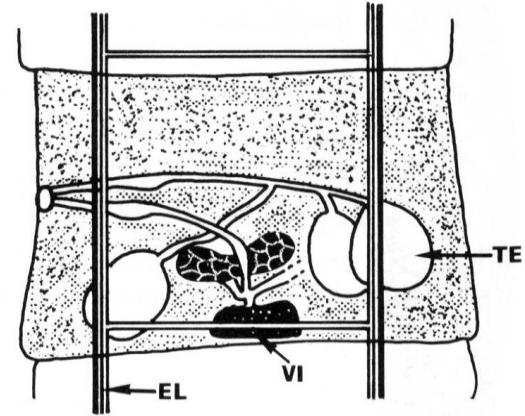
Samičí:

- Vaječník – ovarium
- Vejcovod – ovidukt
- Receptaculum seminis
- Žloutkové trsy – vitelaria
- Ootyp
- Mehlisovy žlázy
- Děloha – uterus
- Vagina

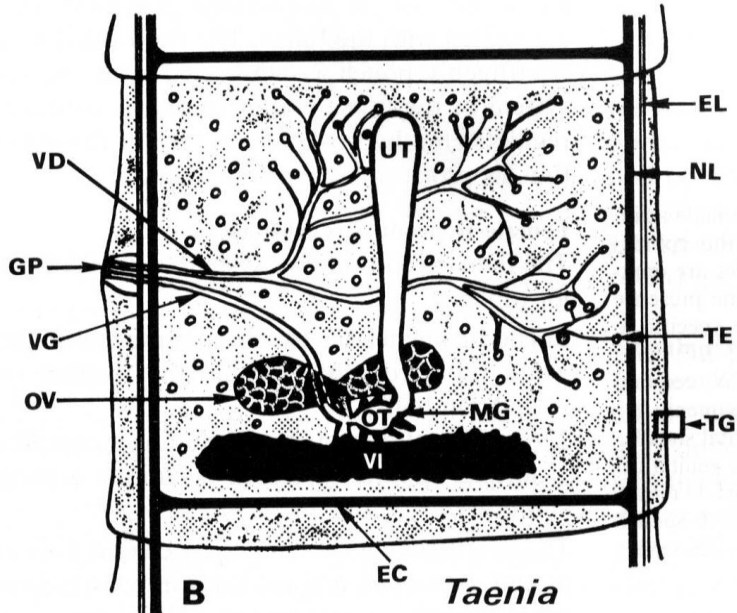
Srovnání stavby článků



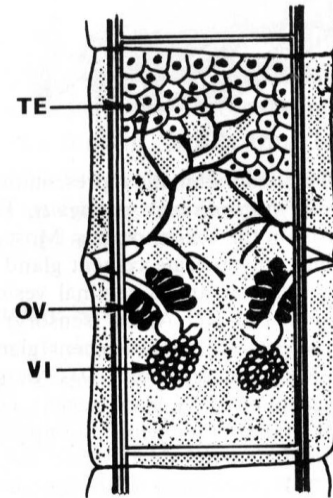
A *Diphyllobothrium*



C *Hymenolepis*

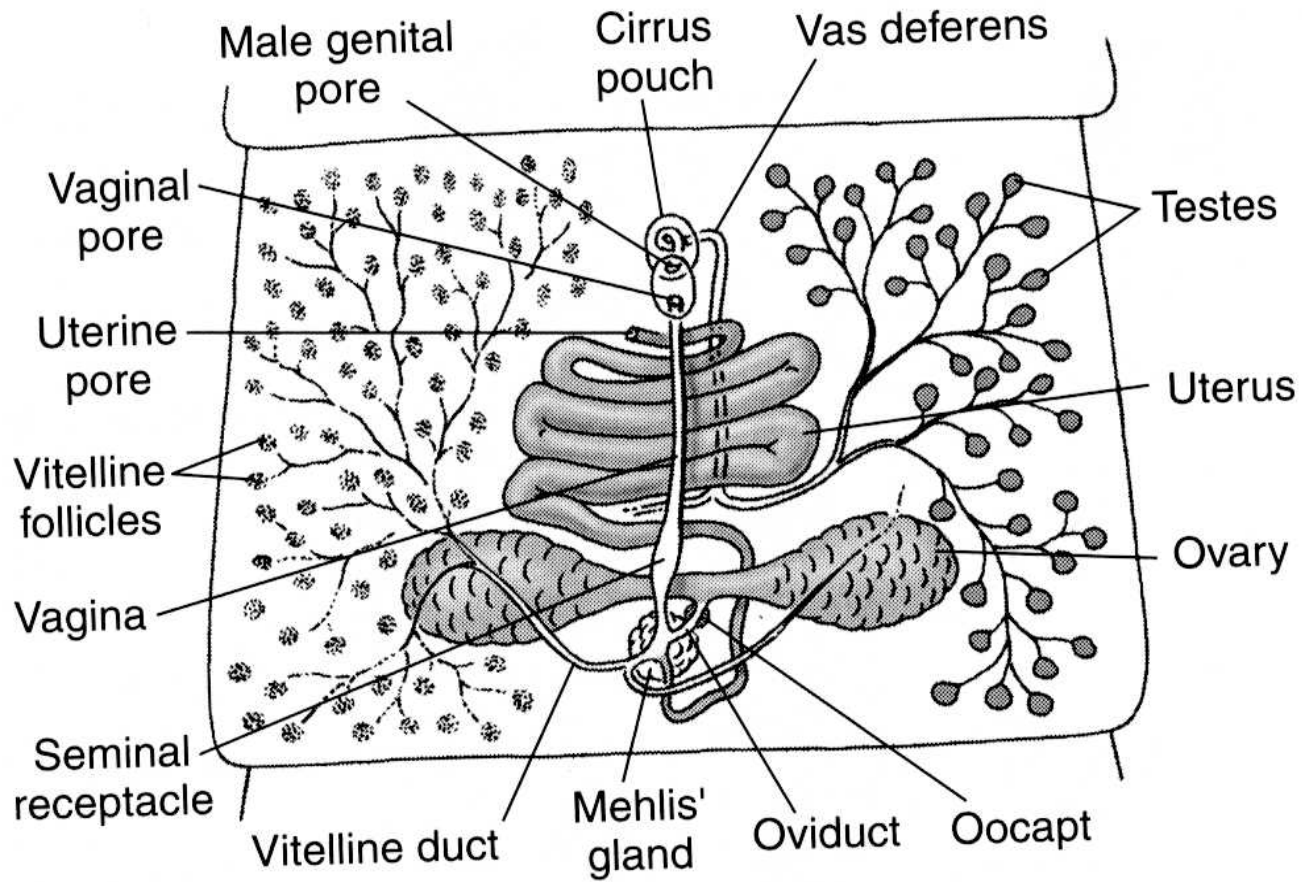


B *Taenia*

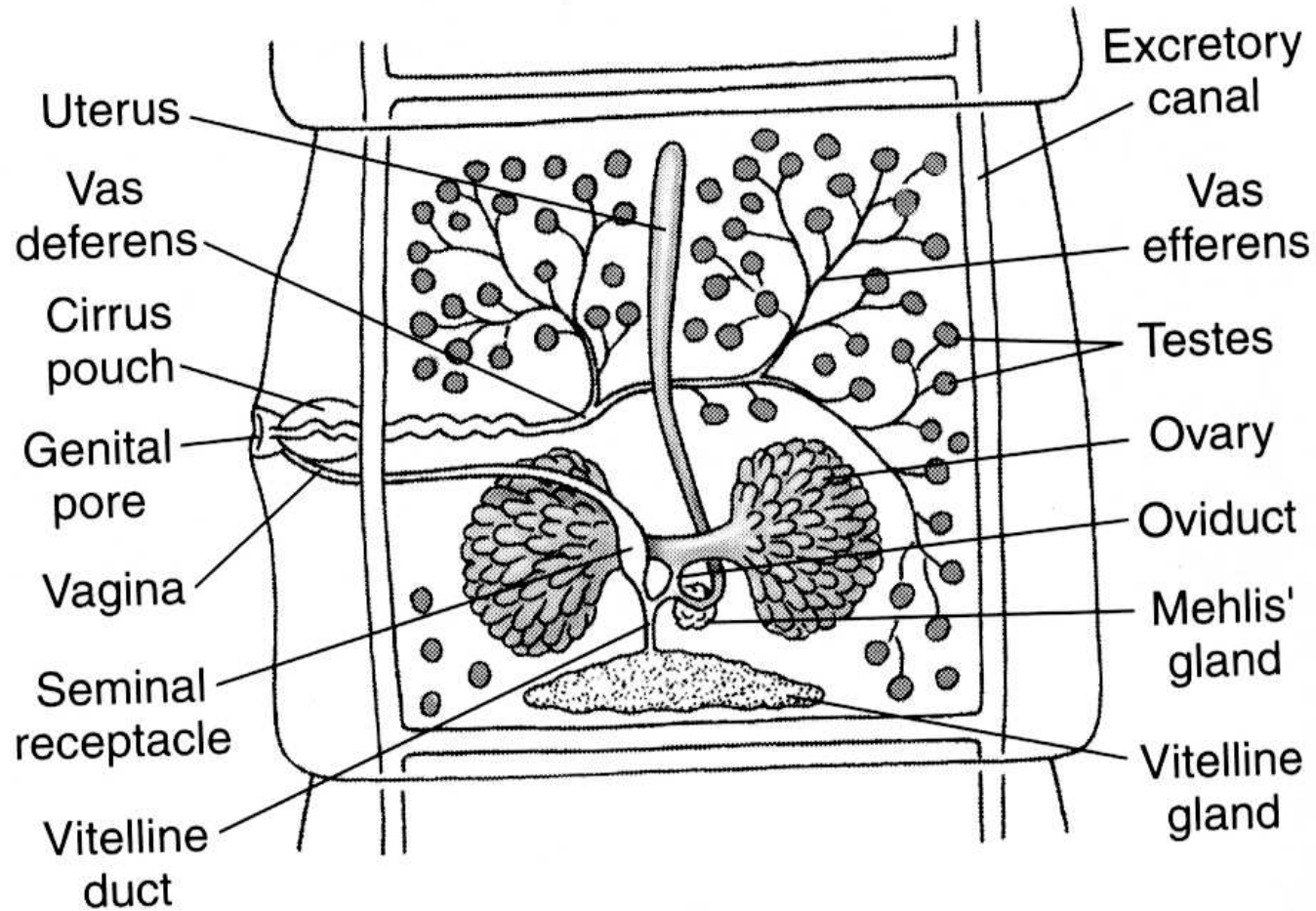


D *Dipylidium*

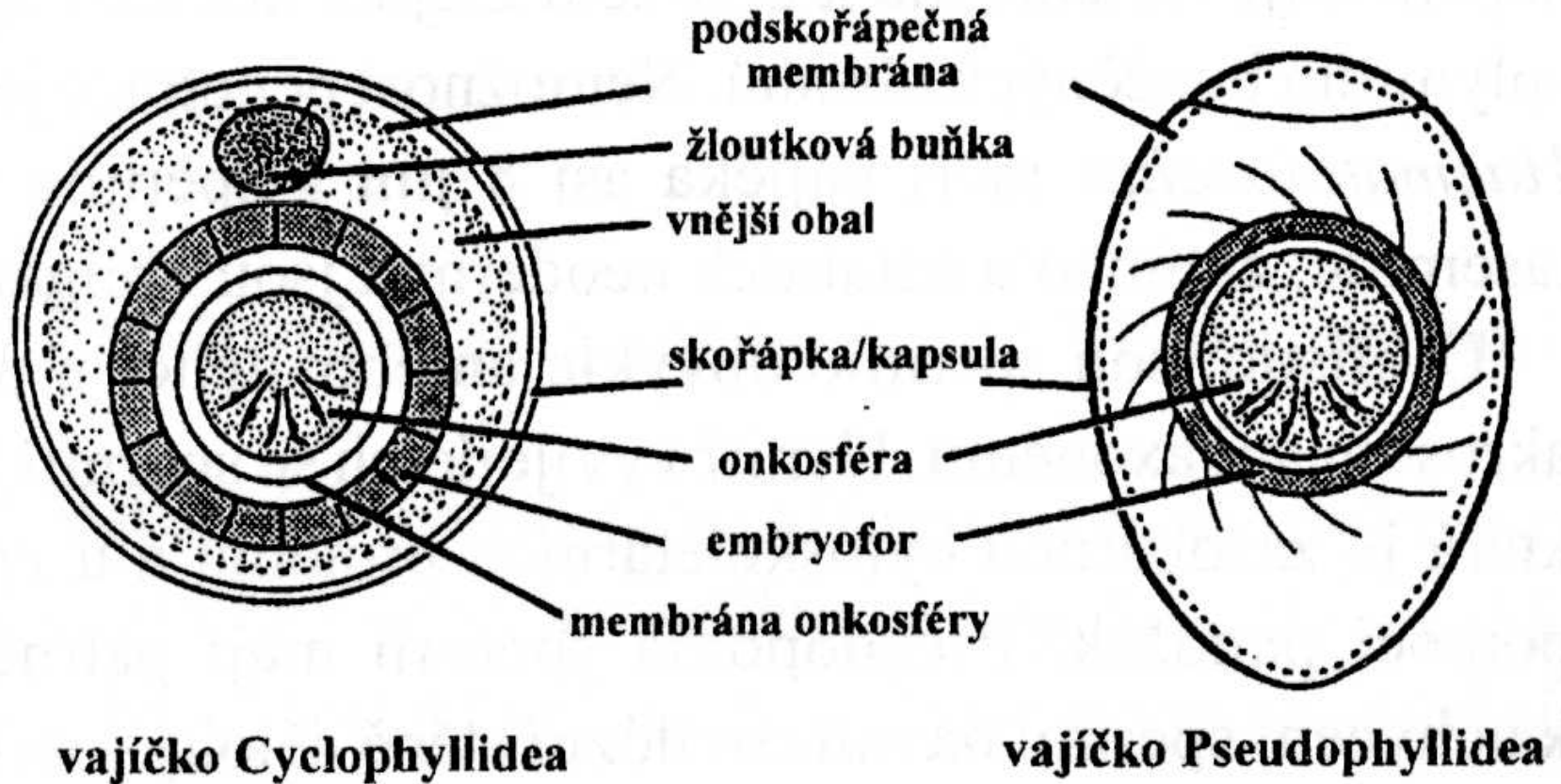
Pohlavní soustava akvatické tasemnice



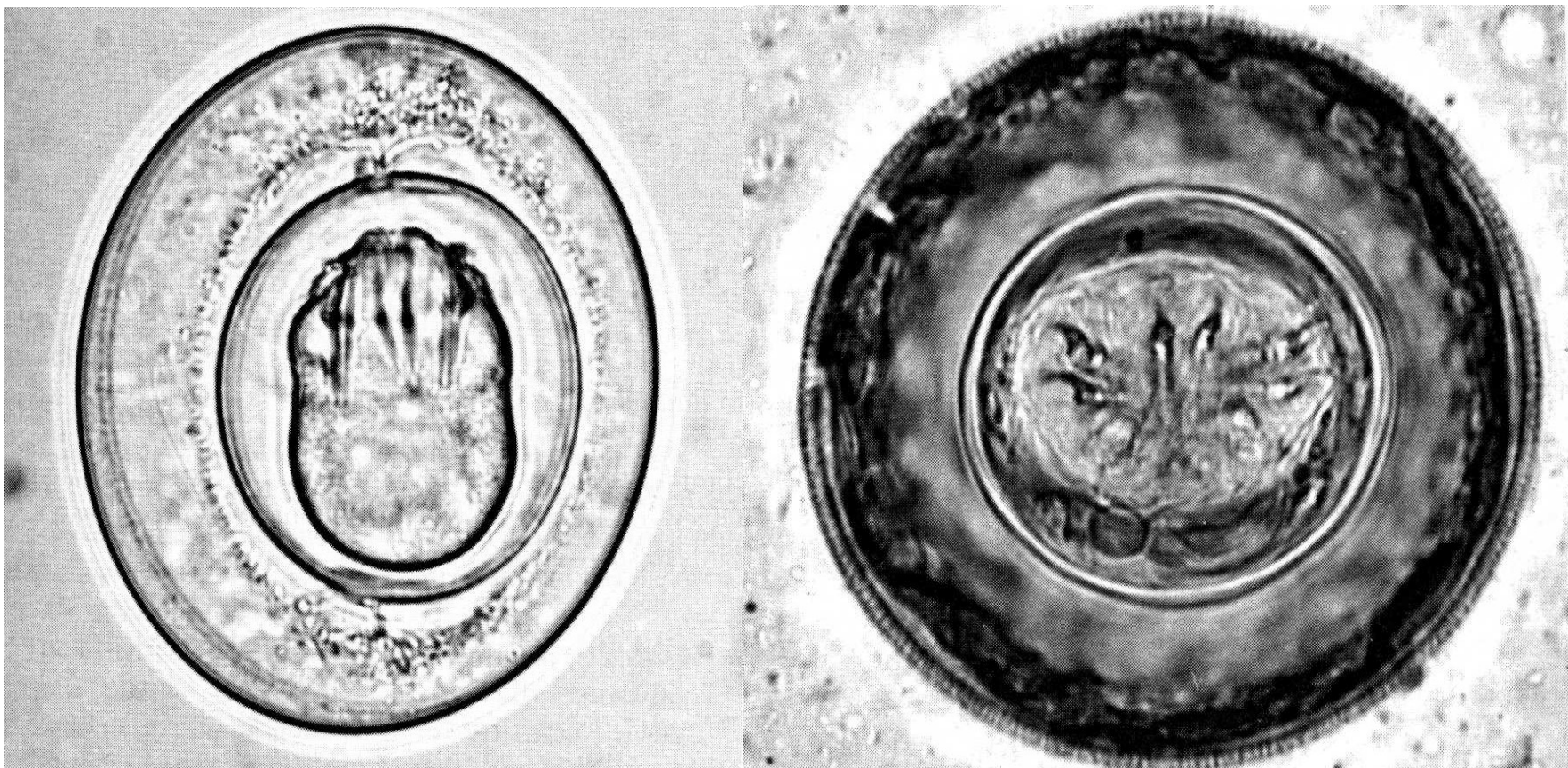
Pohlavní soustava terestrické tasemnice



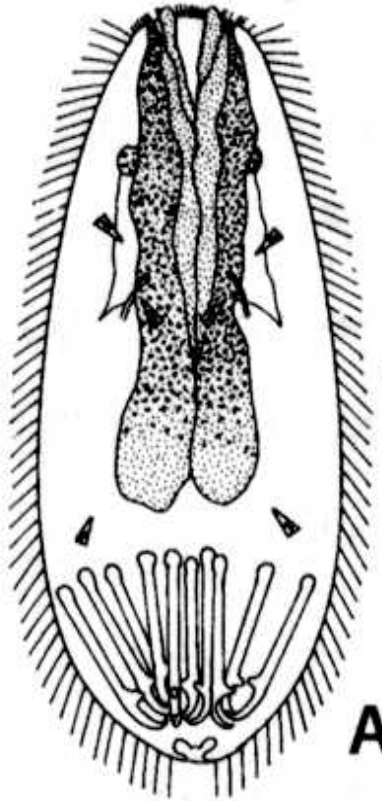
Vajíčka tasemnic



Vajíčka tasemnic



Larvální stádia tasemnic



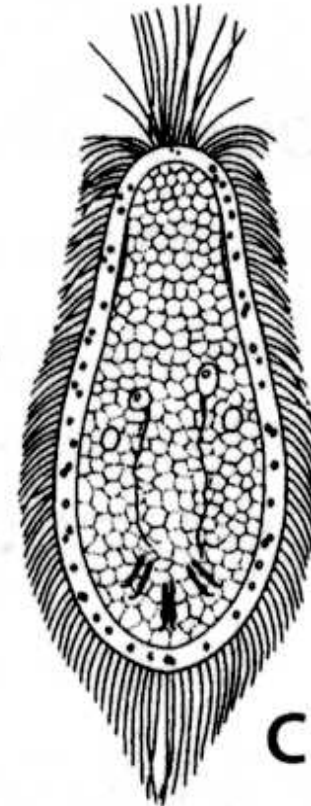
A

lycophora (A)



B

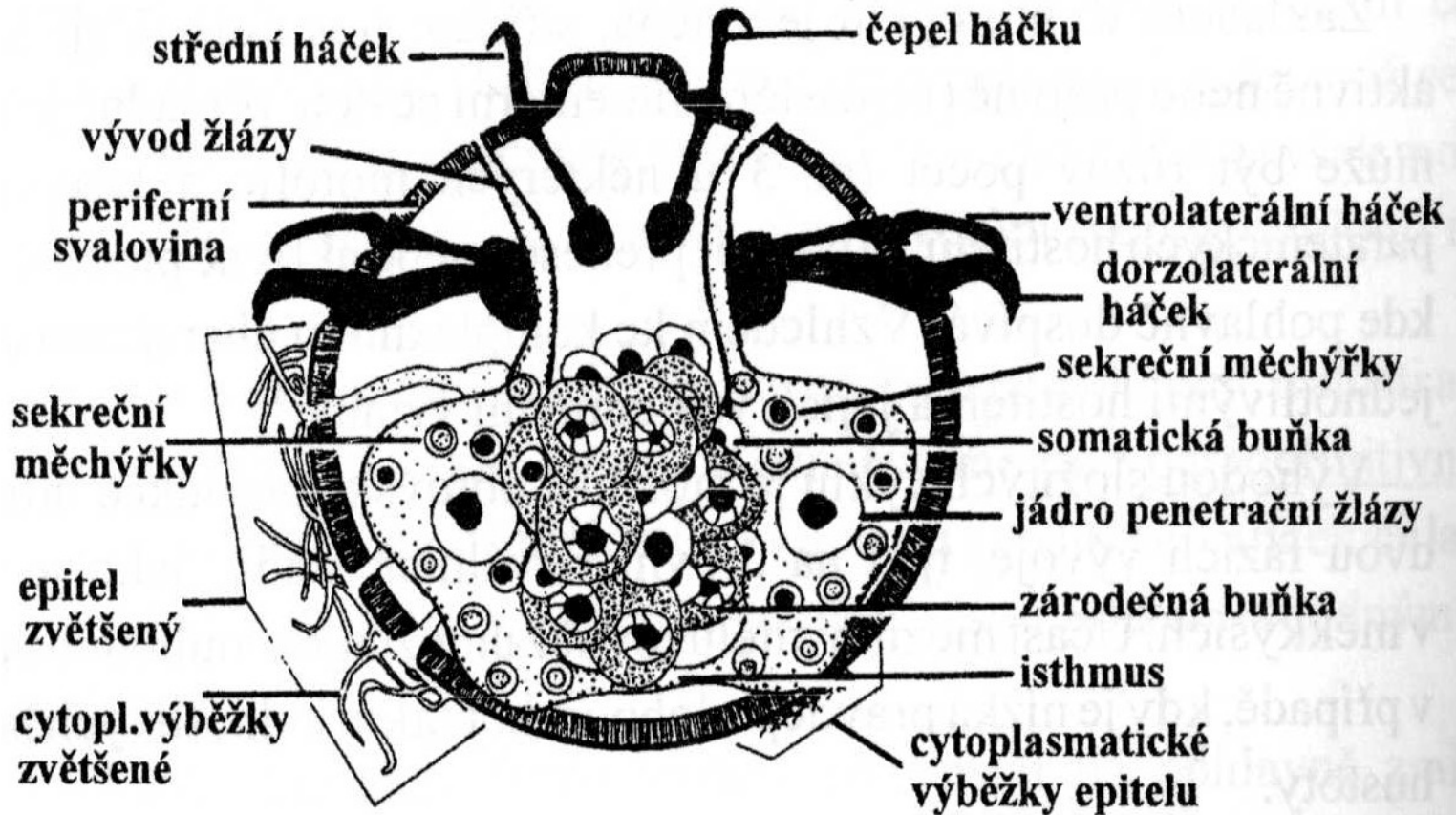
oncosphera (B)



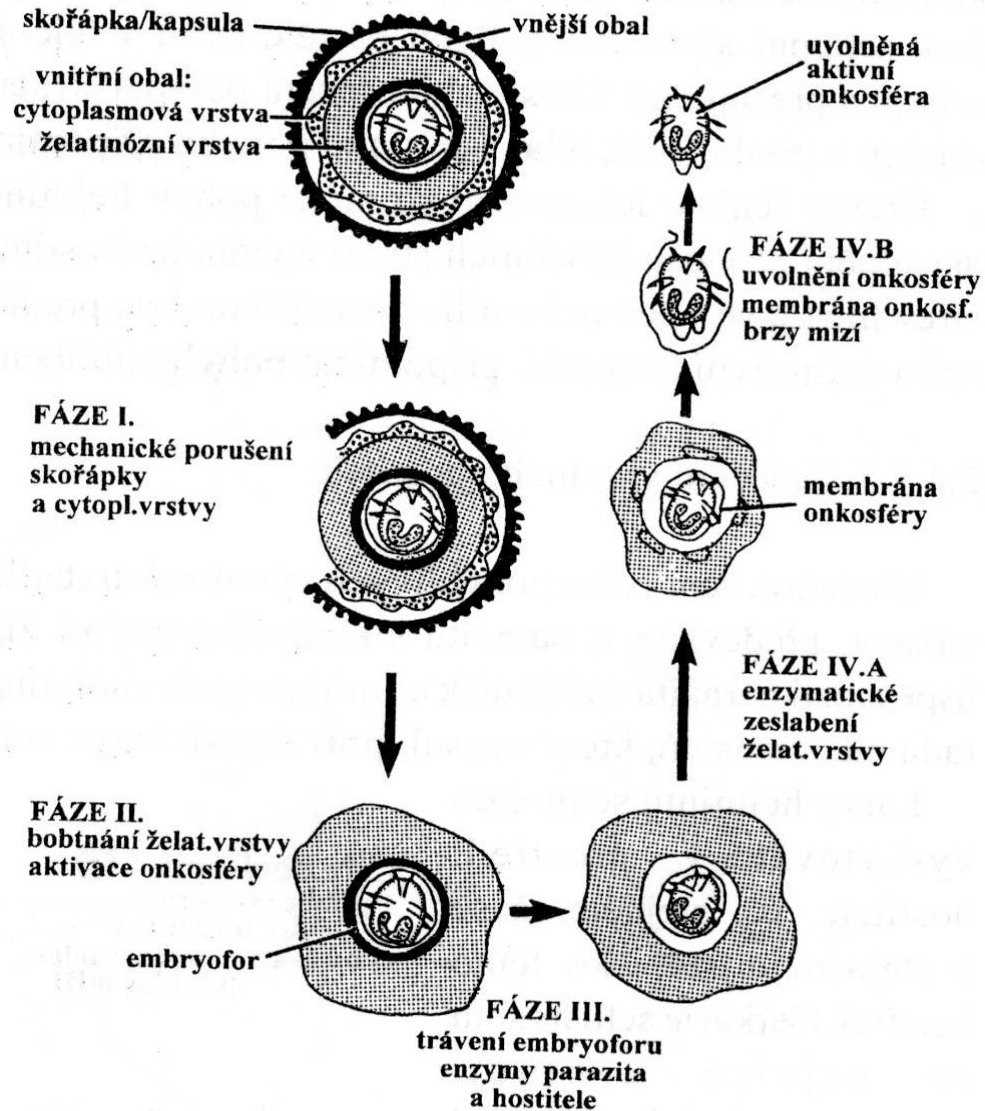
C

coracidium (C)

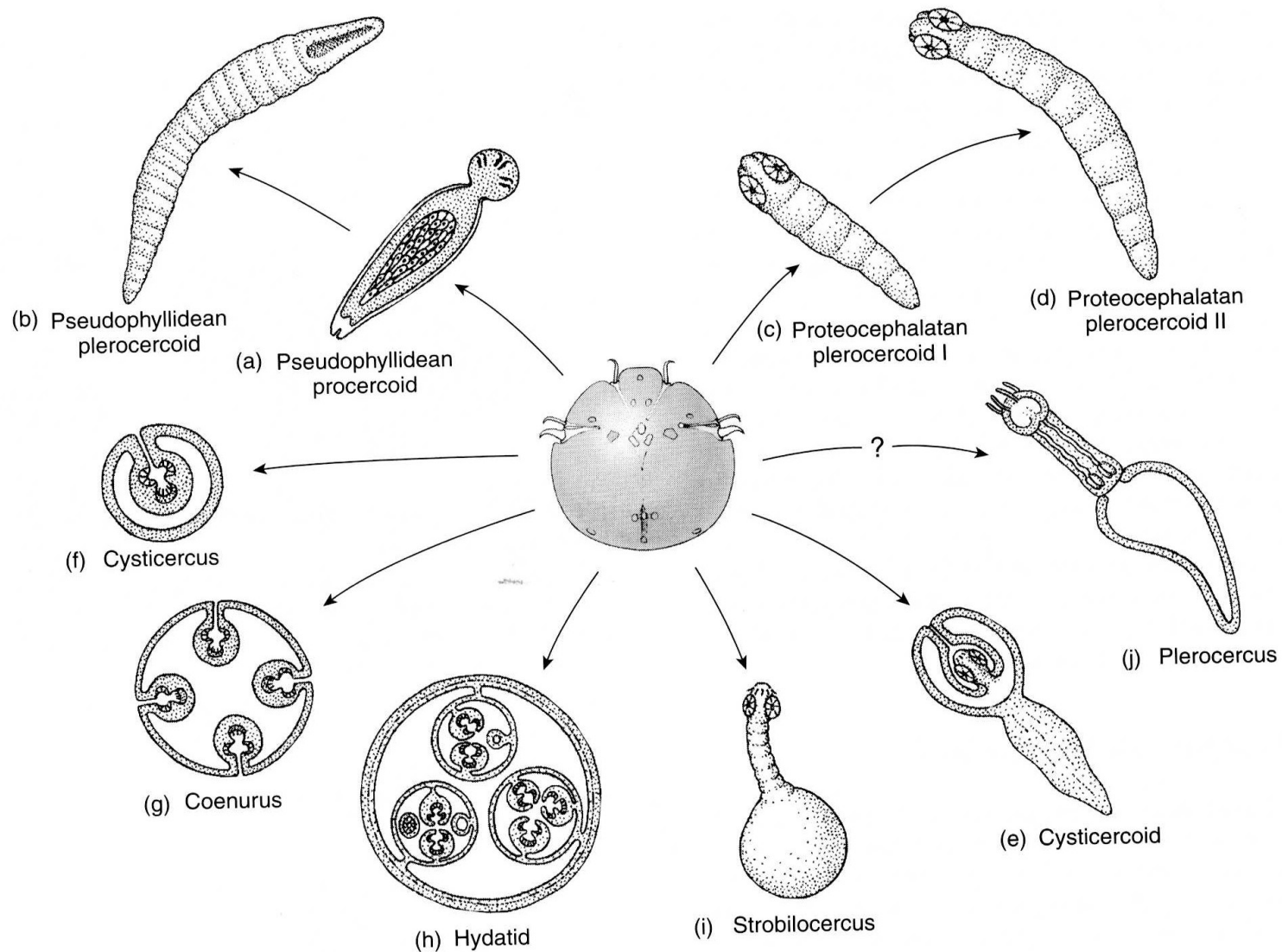
Anatomie onkosféry



Stádia líhnutí onkosféry



Základní typy metacestodů

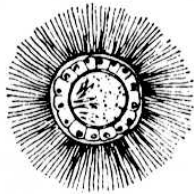


Larvální stádia – akvatický cyklus

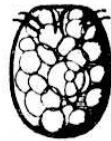
PSEUDOPHYLLIDEA



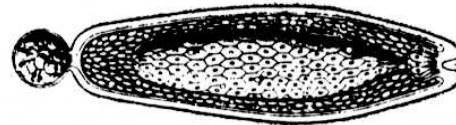
EGG



CORACIDIUM



ONCOSPHERE

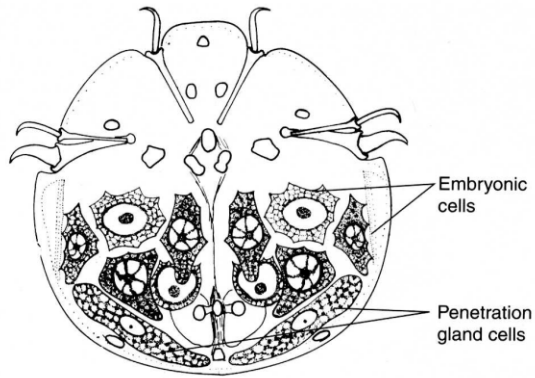


PROCERCOID LARVA

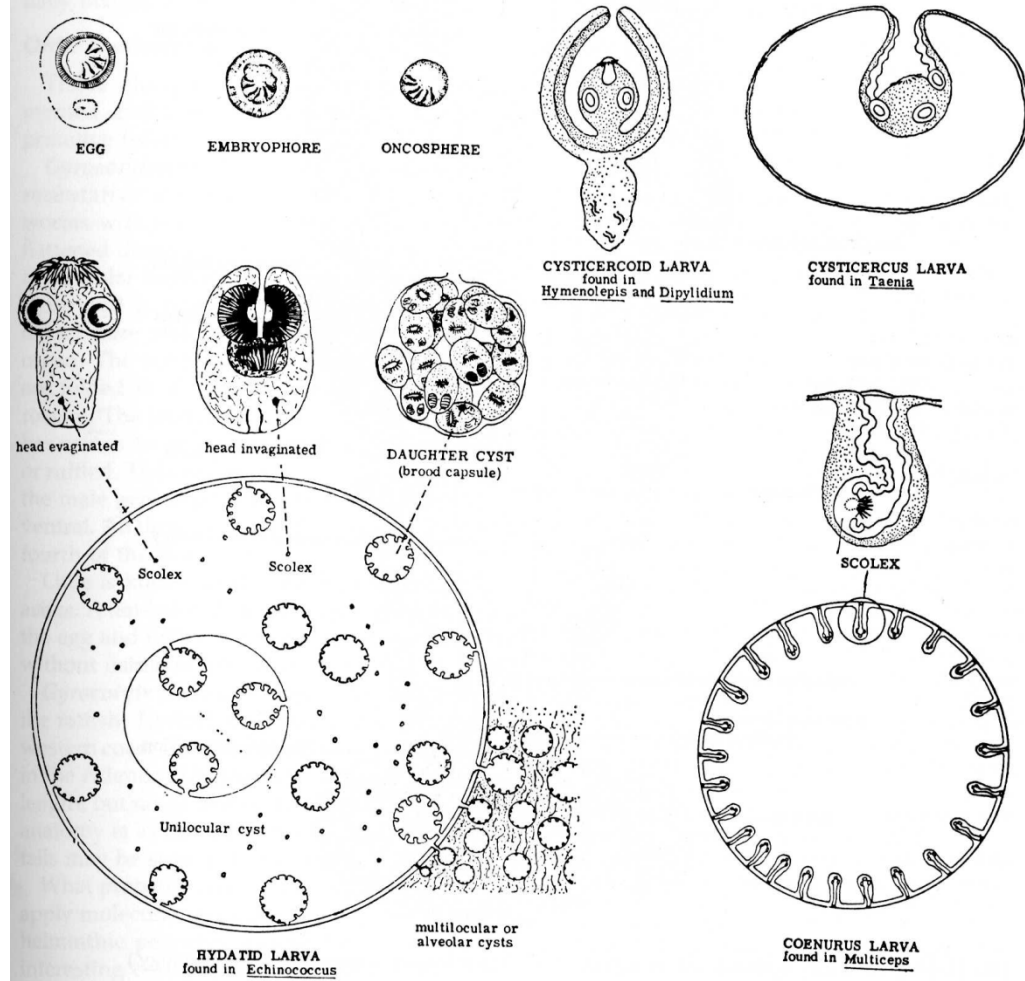


PLEROCERCOID OR
SPARGANUM LARVA

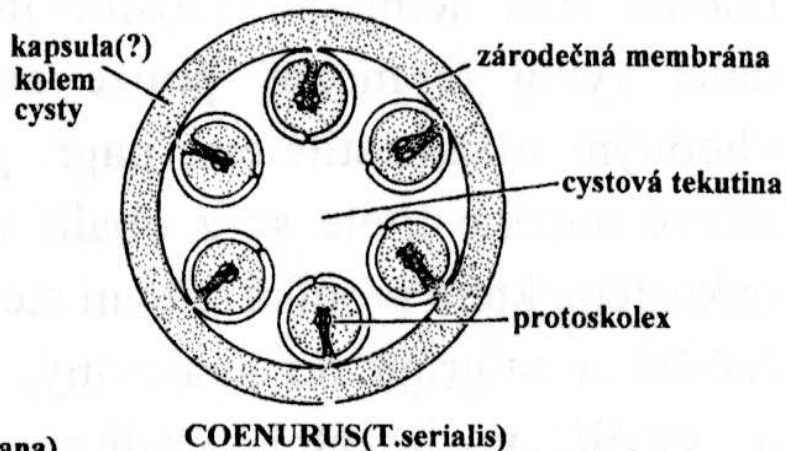
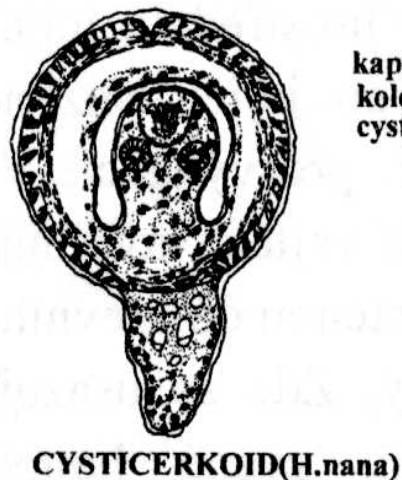
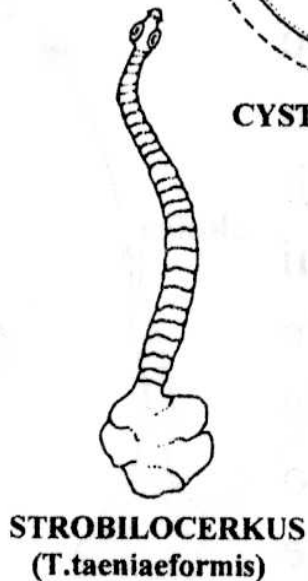
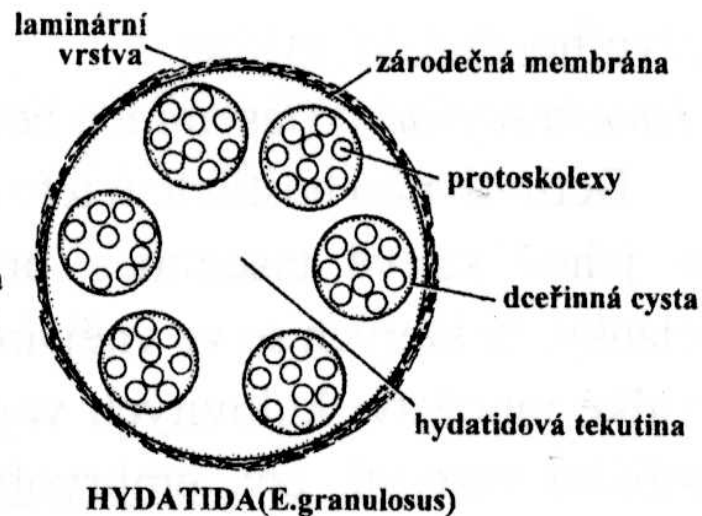
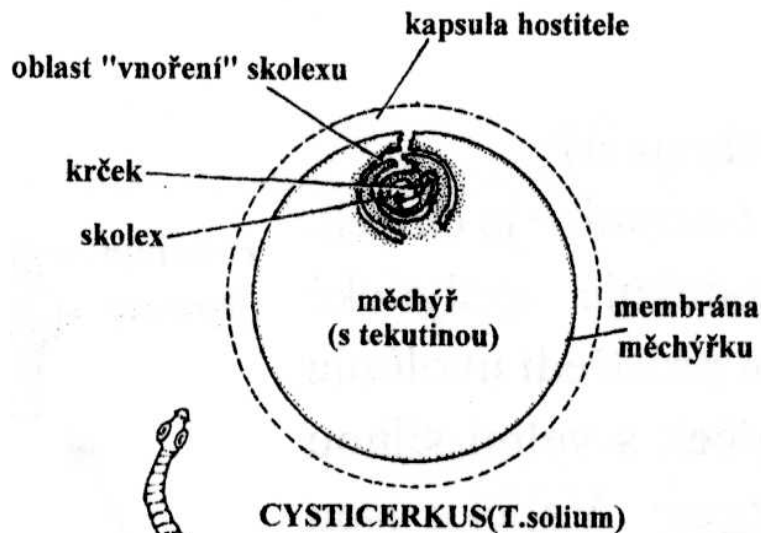
Larvální stadia – terestrický cyklus



CYCLOPHYLLIDEA



Cystická larvální stádia



Typy vývojových cyklů

- **Jednohostitelský** – monoxenní – *Archigetes sieboldi*
- **Dvojhostitelské** - dixenní – *Taenia saginata*
- **Trojhostitelské** – trixenní – *Hymenolepis nana*
- **Čtyřhostitelské** – tetraxenní –
Diphyllobothrium latum