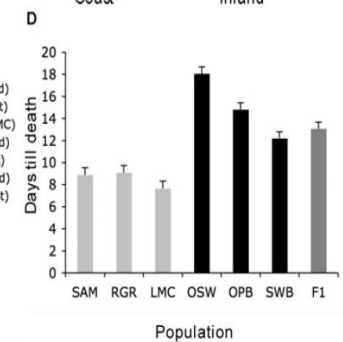
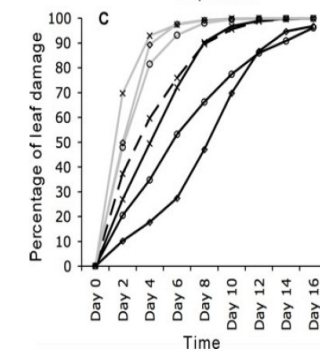
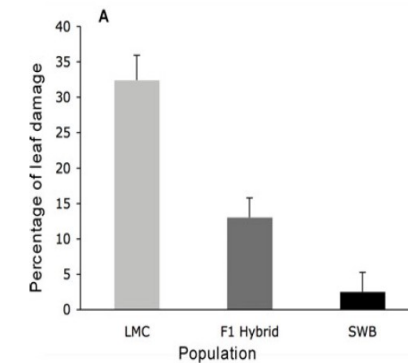
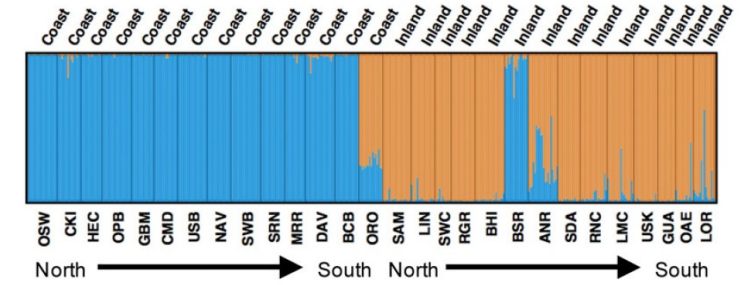
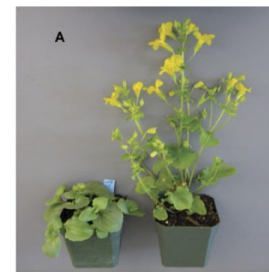
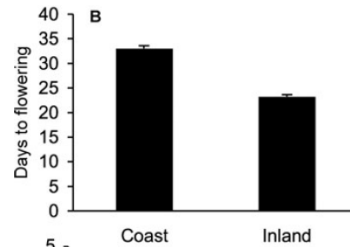
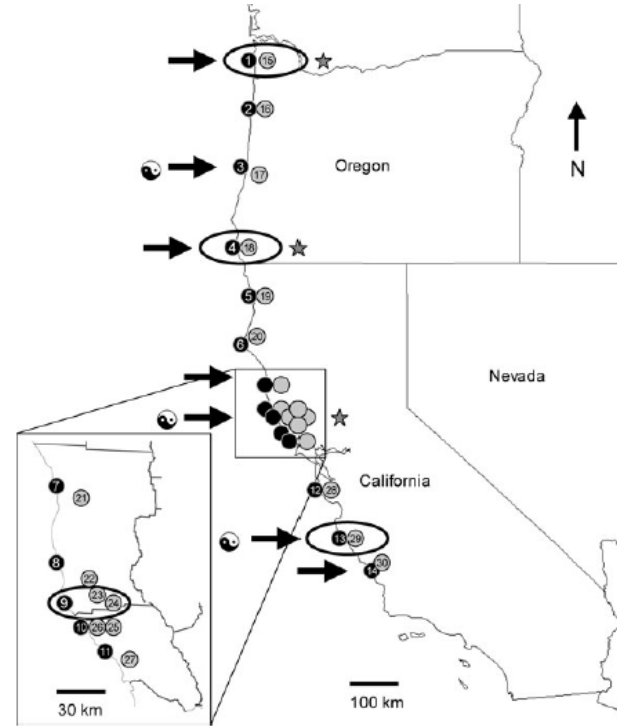
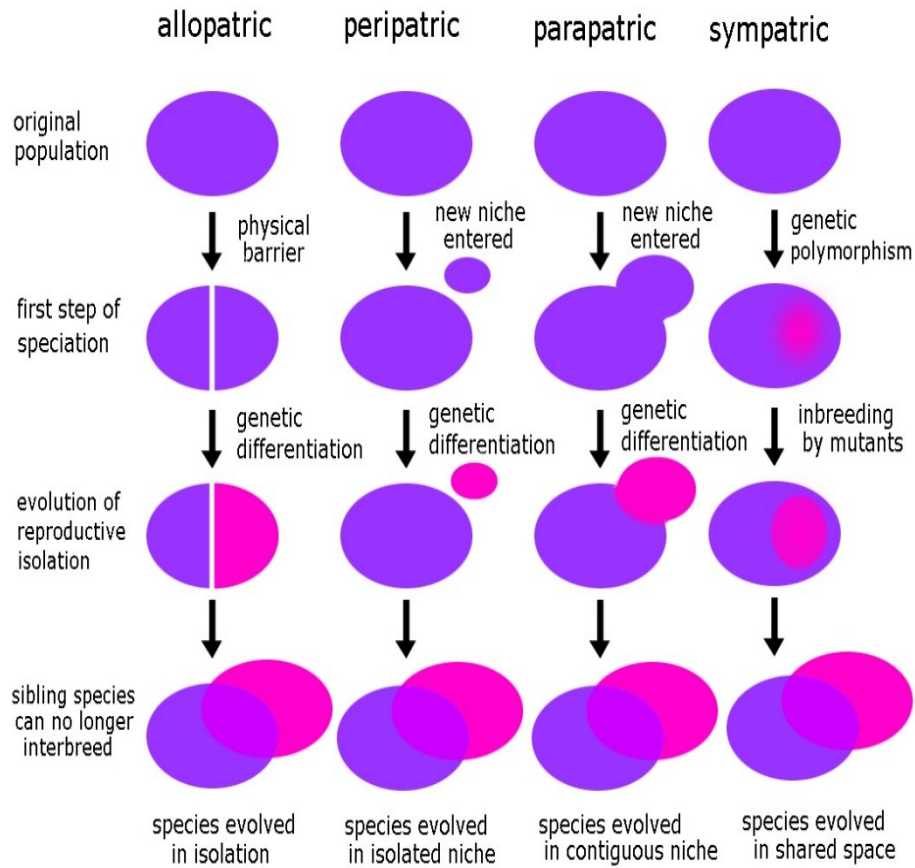


Reproductive barriers in plant speciation

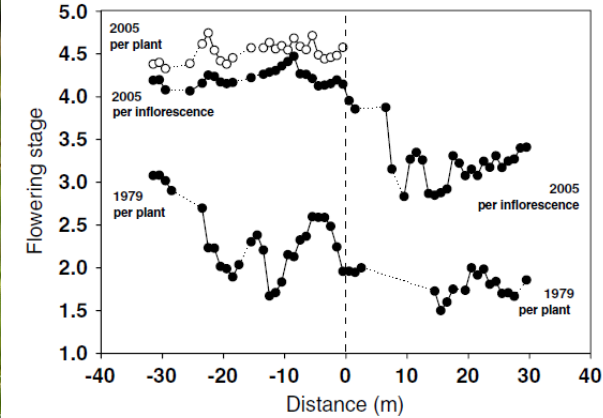
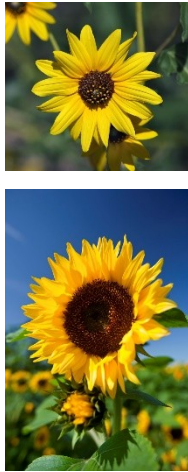
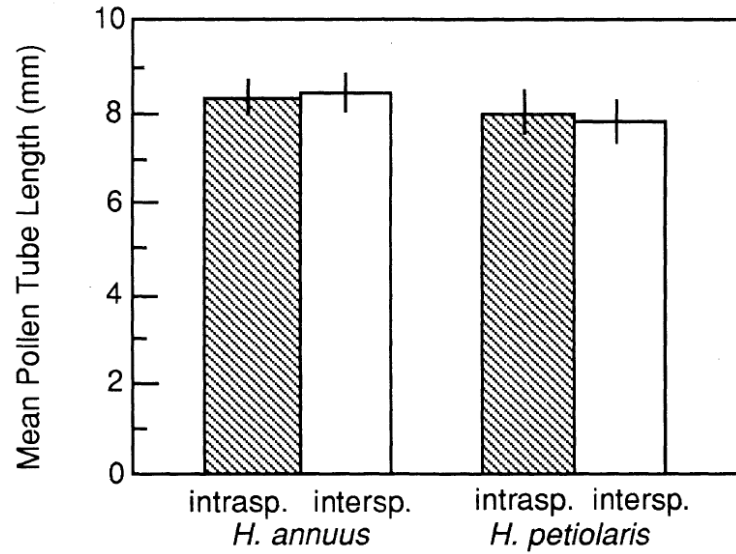
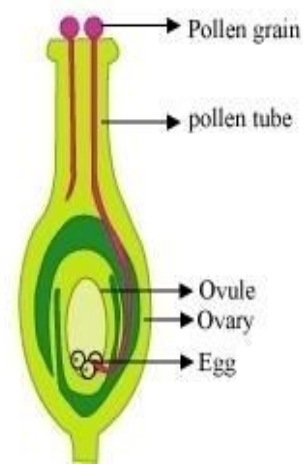
Plant speciation, reproductive barriers



Baack et al. (2015) The origins of reproductive isolation in plants. *New Phytologist* **207**: 968–984.

Lowry et al. (2008) Ecological reproductive isolation of coast and inland races of *Mimulus guttatus*. *Evolution* **62**: 2196–2214.

Prezygotic barriers



Baack et al. (2015) The origins of reproductive isolation in plants. *New Phytologist* **207**: 968–984.

Bucholz et al. (1935) Pollen-Tube Growth of Ten Species of *Datura* in Interspecific Pollinations. *PNAS* **21**: 651-656.

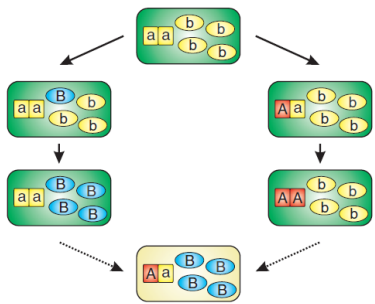
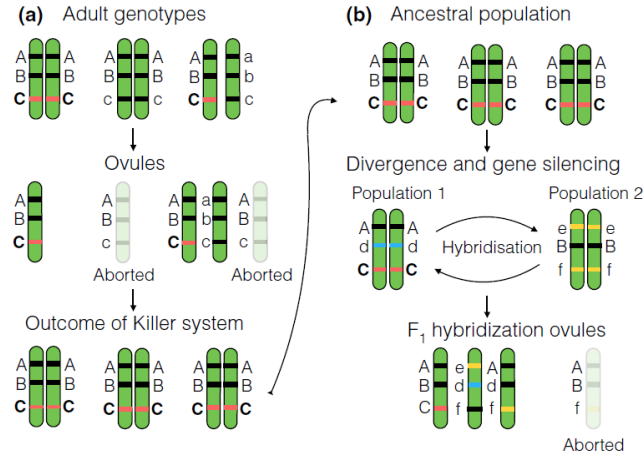
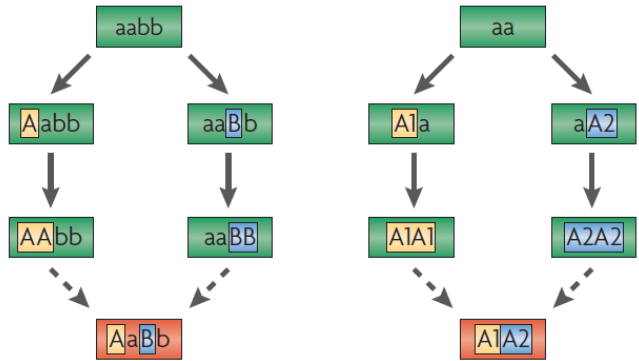
Riesberg et al. (1995) Interspecific Pollen Competition as a Reproductive Barrier Between Sympatric Species of *Helianthus* (Asteraceae). *Am J Bot* **82**: 515-519.

Tovar-Mendéz (2014) Restoring pistil-side self-incompatibility factors recapitulates an interspecific reproductive barrier between tomato species. *Plant J* **77**: 727–736.

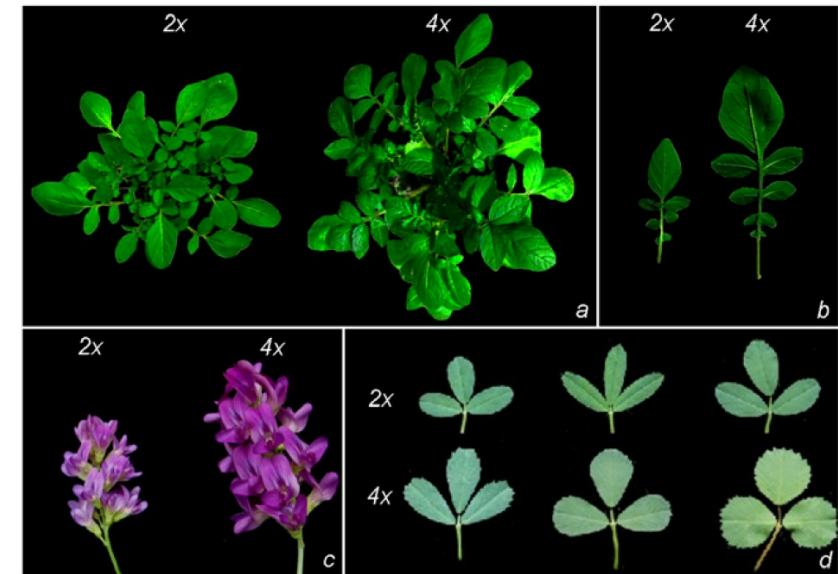
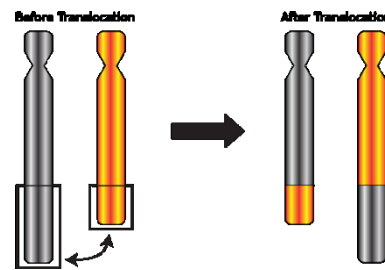
Antonovics (2006) Evolution in closely adjacent plant populations X: long-term persistence of prereproductive isolation at a mine boundary. *Heredity* **97**: 33-37.

Postzygotic barriers

Bateson–Dobzhansky–Muller model



Nuclear genome	Plastome				
	I	II	III	IV	V
AA	●	●	○	○	+
AB	●	●	○	○	+
BB	○	○	○	○	+
BC	○	○	○	○	●
CC	+	+	+	○	○
AC	○	○	○	○	○



Baack et al. (2015) The origins of reproductive isolation in plants. *New Phytologist* **207**: 968–984.

Stathos & Fishman (2014) Chromosomal rearrangements directly cause underdominant F₁ hybrid sterility in *M. lewisii*–*M. cardinalis* hybrids. *Evolution* **68**: 3109–3119.

Greiner et al. (2011) The role of plastids in plant speciation. *Molecular Ecology* **20**: 671–691.

Aversano et al. (2012) Molecular Tools for Exploring Polyploid Genomes in Plants. *Int J Mol Sci* **13**: 10316–10335.