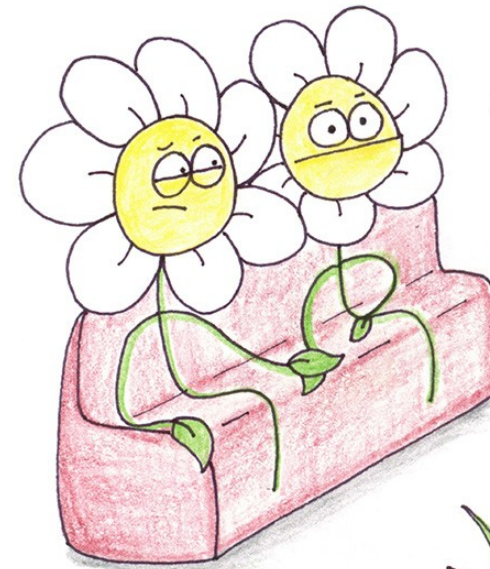
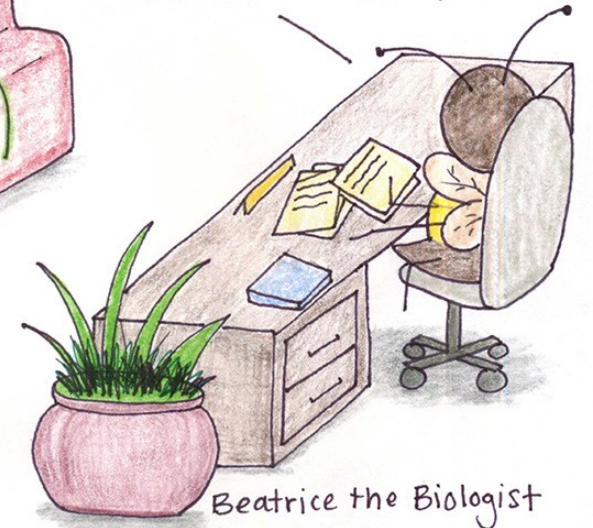


# Plant breeding systems

and their evolutionary consequences

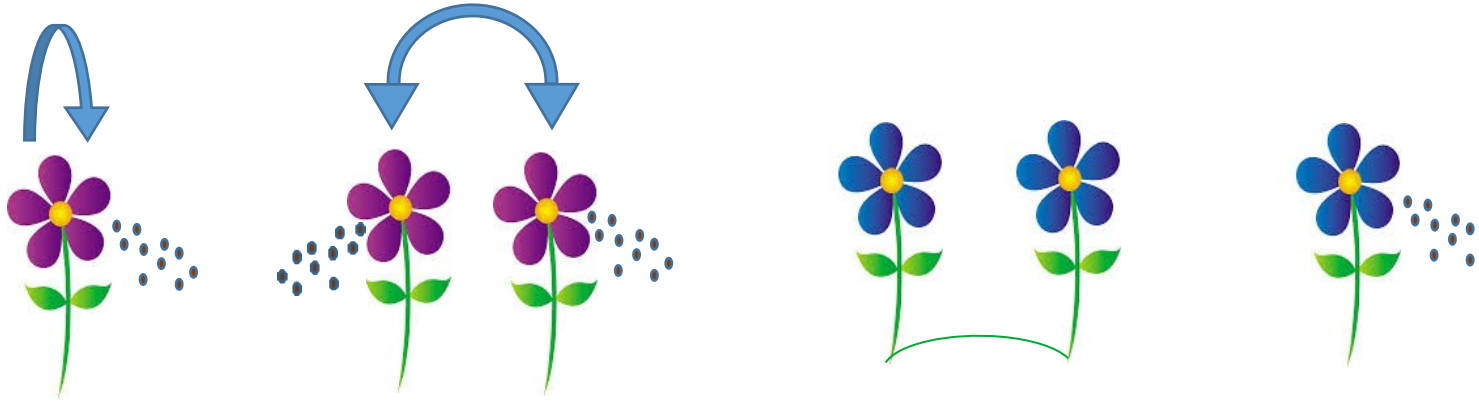


Yes, I can certainly help with that. Now when do you want the sex to occur? Does next Tuesday work?

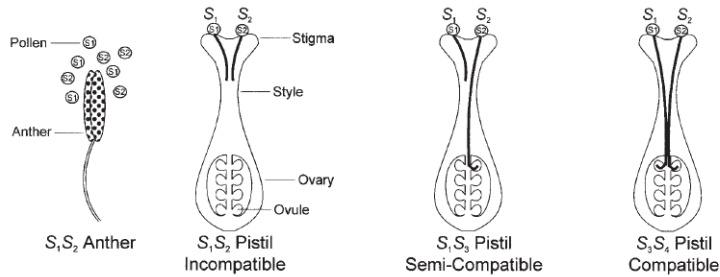


Beatrice the Biologist

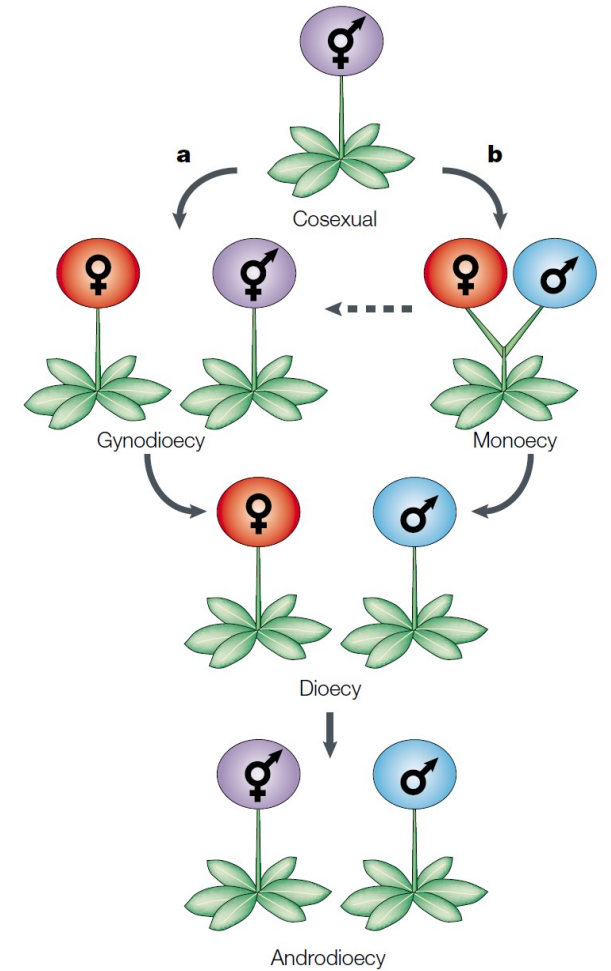
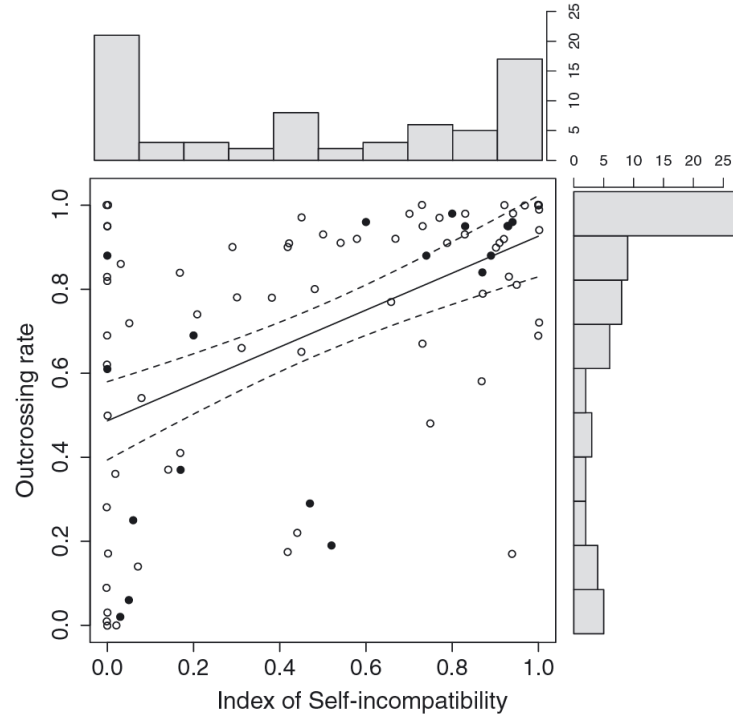
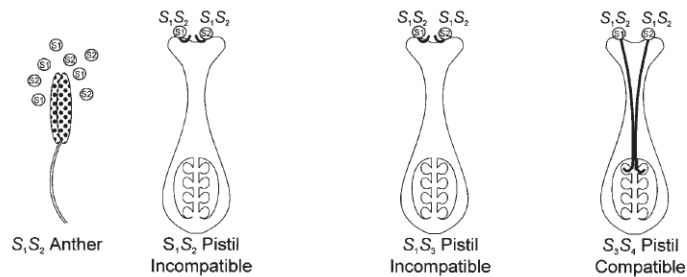
# Sexual and asexual reproduction/propagation



## A. Gametophytic Self-Incompatibility



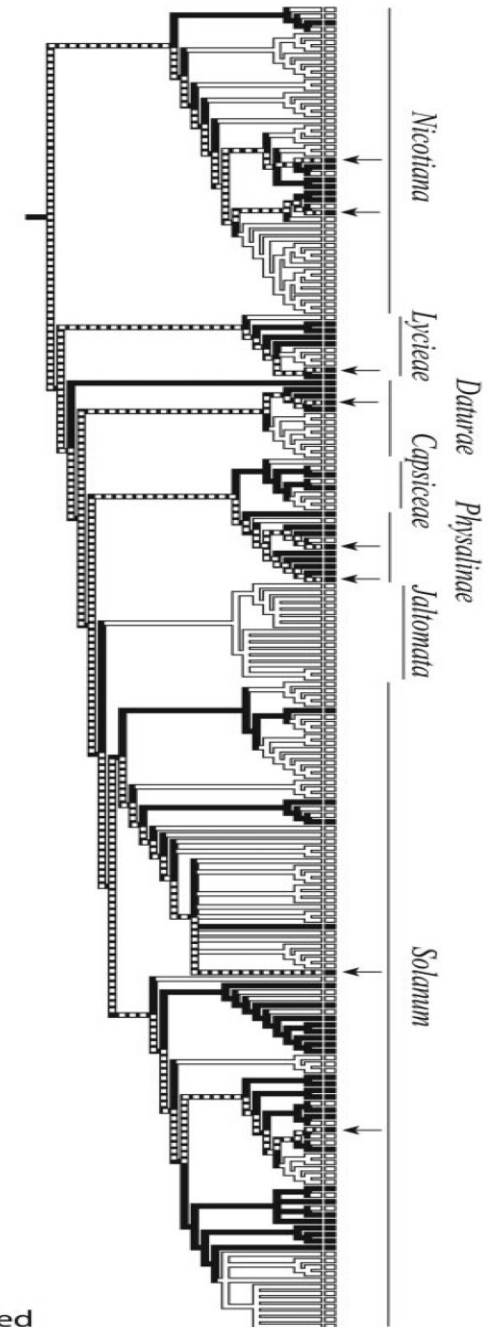
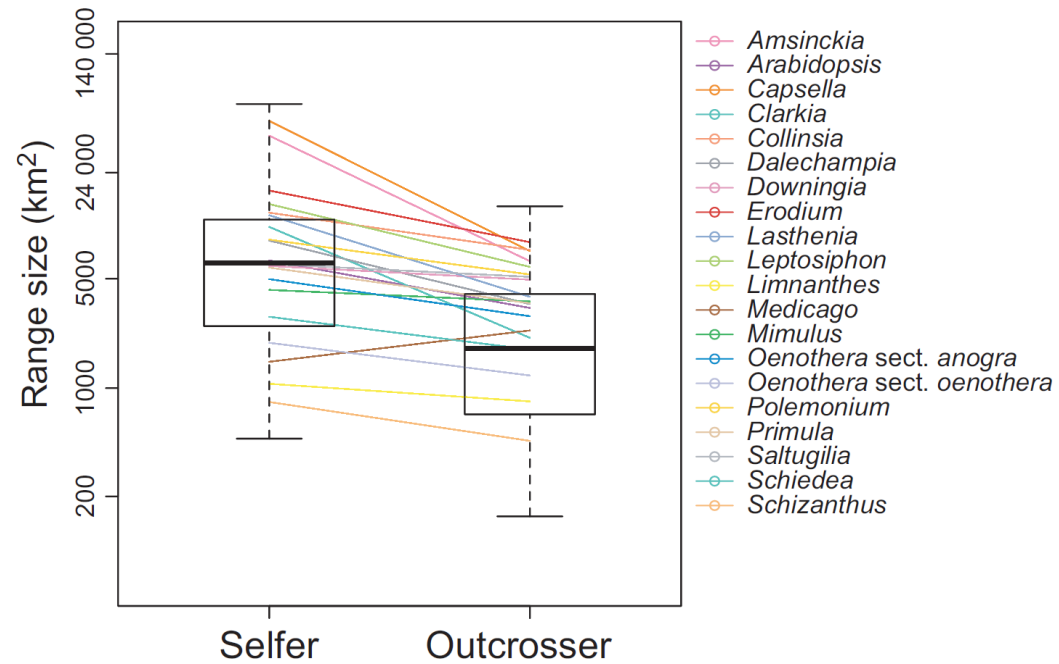
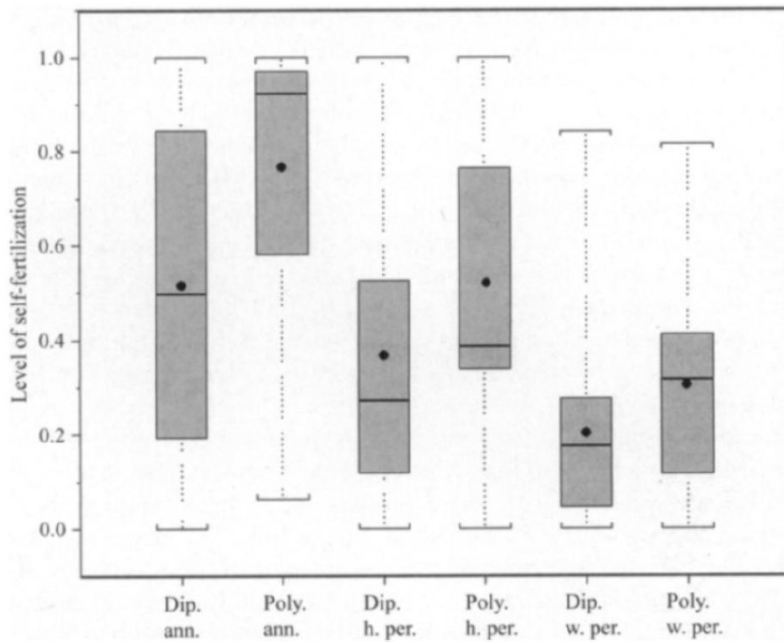
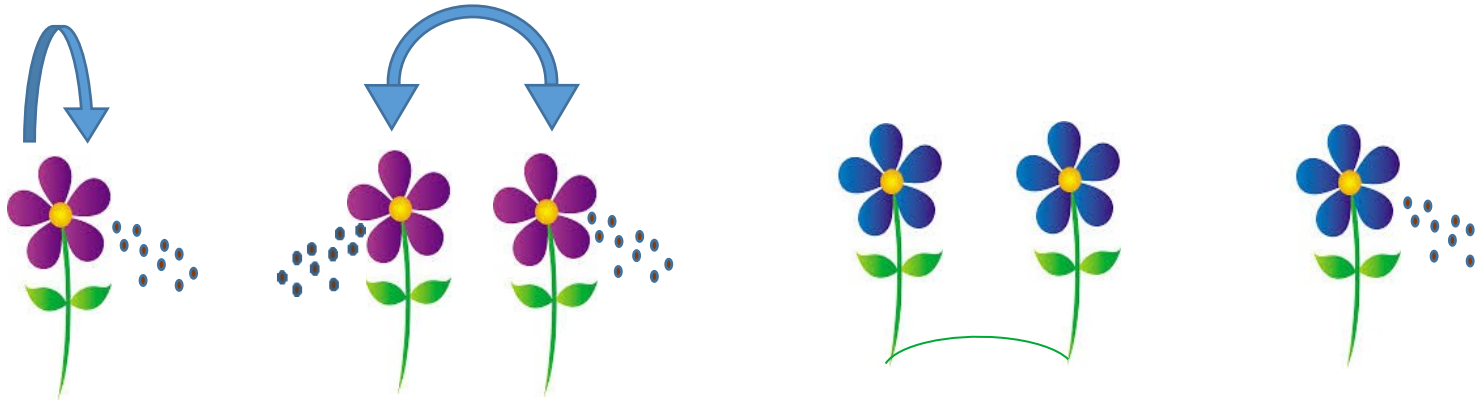
## B. Sporophytic Self-Incompatibility



Barrett (2002) The evolution of plant sexual diversity. *Nature Reviews Genetics* **3**: 274-284.

Raduski et al. (2011) The expression of self-incompatibility in angiosperms is bimodal. *Evolution* **66**: 1275-1283.

# Cons and pros of plant breeding systems



Barringer (2007) Polyploidy and self-fertilization in flowering plants. *Am J Bot* **94**: 1527-1533.

Grossenbacher et al. (2015) Geographic range size is predicted by plant mating system. *Ecology Letters* **18**: 706-713.

Wright et al. (2013) Evolutionary consequences of self-fertilization in plants. *Proc Roy Soc B* **280**: 20130133.

Igic et al. (2006) Ancient polymorphism reveals unidirectional breeding system shifts. *PNAS* **31**: 1359-1363.

SC  
SI  
SI fixed