

Document Name: Skupina 1
 Plate Type: Standard Curve
 User: Student

Document Information

Operator: Administrator
 Run Date: Tuesday May 16 2017 11:52:56
 Last Modified: Tues May 16 2017 13:38:28
 Instrument Type: Applied Biosystems 7500 Real-Time PCR System

Comments:
 SDS v1.4

Thermal Cycler Profile

Stage	Repetitions	Temperature	Time	Ramp Rate
	1	50.0 °C		2:00
	2	95.0 °C	10:00	100
	3	95.0 °C	0:15	100
		60.0 °C	1:00	100

Standard 7500 Mode
 Data Collection : Stage 3 Step 2
 PCR Volume: 25 µL

Standard Curve Information

Detector Name	Slope	Intercept	R2	Number of Standards
CCND1	-2.786213	40.003639	0.948232	16
GAPDH_VIC	-2.924167	33.242157	0.982112	36

Well	Sample Name	Detector	Task	Ct
A1	CCND1	CCND1	Standard	18.4294
A1	CCND1	GAPDH_VIC	Standard	25.8697
A2	CCND1	CCND1	Standard	21.5279
A2	CCND1	GAPDH_VIC	Standard	28.7357
A3	CCND1	CCND1	Standard	24.3866
A3	CCND1	GAPDH_VIC	Standard	31.5662
A4	CCND1	CCND1	Standard	27.7297
A4	CCND1	GAPDH_VIC	Standard	34.9805
A5	CCND1	CCND1	Standard	30.1494
A5	CCND1	GAPDH_VIC	Standard	38.6585
A6	CCND1	CCND1	Standard	31.3094
A6	CCND1	GAPDH_VIC	Standard	36.7398
A7	FOS	FOS	Standard	18.3039
A7	FOS	GAPDH_VIC	Standard	Undetermined
A8	FOS	FOS	Standard	21.4056
A8	FOS	GAPDH_VIC	Standard	Undetermined
A9	FOS	FOS	Standard	24.2154
A9	FOS	GAPDH_VIC	Standard	Undetermined
A10	FOS	FOS	Standard	27.7687
A10	FOS	GAPDH_VIC	Standard	Undetermined

A11	FOS	FOS	Standard	31.0664
A11	FOS	GAPDH_VIC	Standard	Undetermined
A12	FOS	FOS	Standard	34.2391
A12	FOS	GAPDH_VIC	Standard	Undetermined
B1	CCND1	CCND1	Standard	18.4036
B1	CCND1	GAPDH_VIC	Standard	25.8965
B2	CCND1	CCND1	Standard	21.4893
B2	CCND1	GAPDH_VIC	Standard	28.6825
B3	CCND1	CCND1	Standard	24.4518
B3	CCND1	GAPDH_VIC	Standard	31.6747
B4	CCND1	CCND1	Standard	27.9473
B4	CCND1	GAPDH_VIC	Standard	35.1995
B5	CCND1	CCND1	Standard	30.2364
B5	CCND1	GAPDH_VIC	Standard	38.2376
B6	CCND1	CCND1	Standard	31.4168
B6	CCND1	GAPDH_VIC	Standard	Undetermined
B7	FOS	FOS	Standard	18.653
B7	FOS	GAPDH_VIC	Standard	38.5237
B8	FOS	FOS	Standard	21.3685
B8	FOS	GAPDH_VIC	Standard	Undetermined
B9	FOS	FOS	Standard	24.238
B9	FOS	GAPDH_VIC	Standard	Undetermined
B10	FOS	FOS	Standard	27.7048
B10	FOS	GAPDH_VIC	Standard	Undetermined
B11	FOS	FOS	Standard	31.0959
B11	FOS	GAPDH_VIC	Standard	Undetermined
B12	FOS	FOS	Standard	34.6231
B12	FOS	GAPDH_VIC	Standard	Undetermined
C1	CCND1	CCND1	Standard	18.6895
C1	CCND1	GAPDH_VIC	Standard	26.1399
C2	CCND1	CCND1	Standard	21.5834
C2	CCND1	GAPDH_VIC	Standard	28.343
C3	CCND1	CCND1	Standard	24.4589
C3	CCND1	GAPDH_VIC	Standard	31.0661
C4	CCND1	CCND1	Standard	27.7295
C4	CCND1	GAPDH_VIC	Standard	34.798
C5	CCND1	CCND1	Standard	30.3379
C5	CCND1	GAPDH_VIC	Standard	38.0906
C6	CCND1	CCND1	Standard	31.5435
C6	CCND1	GAPDH_VIC	Standard	Undetermined
C7	FOS	FOS	Standard	18.7039
C7	FOS	GAPDH_VIC	Standard	Undetermined
C8	FOS	FOS	Standard	21.366
C8	FOS	GAPDH_VIC	Standard	Undetermined
C9	FOS	FOS	Standard	24.303
C9	FOS	GAPDH_VIC	Standard	Undetermined
C10	FOS	FOS	Standard	28.0202
C10	FOS	GAPDH_VIC	Standard	Undetermined
C11	FOS	FOS	Standard	31.0923
C11	FOS	GAPDH_VIC	Standard	Undetermined

C12	FOS	FOS	Standard	33.5546
C12	FOS	GAPDH_VIC	Standard	Undetermined
D1	20 % FBS	CCND1	Unknown	Undetermined
D2	20 % FBS	CCND1	Unknown	Undetermined
D3	20 % FBS	CCND1	Unknown	Undetermined
D4	bez FBS	CCND1	Unknown	Undetermined
D5	bez FBS	CCND1	Unknown	28.2555
D6	bez FBS	CCND1	Unknown	26.1166
D9	noRT	CCND1	Unknown	Undetermined
D9	noRT	GAPDH_VIC	Unknown	32.3923
D10	noRT	FOS	Unknown	Undetermined
D10	noRT	GAPDH_VIC	Unknown	Undetermined
D11	NK	CCND1	Unknown	Undetermined
D11	NK	GAPDH_VIC	Unknown	32.2859
D12	NK	FOS	Unknown	Undetermined
D12	NK	GAPDH_VIC	Unknown	Undetermined
E1	20 % FBS	FOS	Unknown	37.5476
E2	20 % FBS	FOS	Unknown	37.8208
E3	20 % FBS	FOS	Unknown	37.1939
E4	bez FBS	FOS	Unknown	36.0935
E5	bez FBS	FOS	Unknown	37.0759
E6	bez FBS	FOS	Unknown	37.6394
E9	noRT	CCND1	Unknown	-
E9	noRT	GAPDH_VIC	Unknown	-
E10	noRT	FOS	Unknown	-
E10	noRT	GAPDH_VIC	Unknown	-
E11	NK	CCND1	Unknown	-
E11	NK	GAPDH_VIC	Unknown	-
E12	NK	FOS	Unknown	-
E12	NK	GAPDH_VIC	Unknown	-
F1	20 % FBS	GAPDH	Unknown	16.6395
F2	20 % FBS	GAPDH	Unknown	16.6686
F3	20 % FBS	GAPDH	Unknown	16.6944
F4	bez FBS	GAPDH	Unknown	19.7386
F5	bez FBS	GAPDH	Unknown	19.8824
F6	bez FBS	GAPDH	Unknown	19.9571
G1	20 % FBS	GAPDH_VIC	Unknown	19.3746
G1	20 % FBS	CCND1	Unknown	26.6831
G2	20 % FBS	GAPDH_VIC	Unknown	16.6382
G2	20 % FBS	CCND1	Unknown	24.8887
G3	20 % FBS	GAPDH_VIC	Unknown	16.9457
G3	20 % FBS	CCND1	Unknown	25.3738
G4	bez FBS	GAPDH_VIC	Unknown	21.2117
G4	bez FBS	CCND1	Unknown	29.8633
G5	bez FBS	GAPDH_VIC	Unknown	21.1432
G5	bez FBS	CCND1	Unknown	30.2967
G6	bez FBS	GAPDH_VIC	Unknown	21.3178
G6	bez FBS	CCND1	Unknown	30.622
G7	1 ul EtOH	CCND1	Unknown	31.6994
G7	1 ul EtOH	GAPDH_VIC	Unknown	17.962

G8	1 ul EtOH	CCND1	Unknown	Undetermined
G8	1 ul EtOH	GAPDH_VIC	Unknown	16.2312
G9	1 ul EtOH	CCND1	Unknown	Undetermined
G9	1 ul EtOH	GAPDH_VIC	Unknown	18.5049
G10	1 ul EtOH	FOS	Unknown	Undetermined
G10	1 ul EtOH	GAPDH_VIC	Unknown	20.4713
G11	1 ul EtOH	FOS	Unknown	Undetermined
G11	1 ul EtOH	GAPDH_VIC	Unknown	Undetermined
G12	1 ul EtOH	FOS	Unknown	Undetermined
G12	1 ul EtOH	GAPDH_VIC	Unknown	19.7808
H1	20 % FBS	GAPDH_VIC	Unknown	18.4237
H1	20 % FBS	FOS	Unknown	Undetermined
H2	20 % FBS	GAPDH_VIC	Unknown	19.1789
H2	20 % FBS	FOS	Unknown	Undetermined
H3	20 % FBS	GAPDH_VIC	Unknown	18.294
H3	20 % FBS	FOS	Unknown	Undetermined
H4	bez FBS	GAPDH_VIC	Unknown	16.5937
H4	bez FBS	FOS	Unknown	35.3634
H5	bez FBS	GAPDH_VIC	Unknown	21.1738
H5	bez FBS	FOS	Unknown	Undetermined
H6	bez FBS	GAPDH_VIC	Unknown	20.3871
H6	bez FBS	FOS	Unknown	Undetermined
H7	2 ul EtOH	CCND1	Unknown	Undetermined
H7	2 ul EtOH	GAPDH_VIC	Unknown	Undetermined
H8	2 ul EtOH	CCND1	Unknown	Undetermined
H8	2 ul EtOH	GAPDH_VIC	Unknown	Undetermined
H9	2 ul EtOH	CCND1	Unknown	Undetermined
H9	2 ul EtOH	GAPDH_VIC	Unknown	Undetermined
H10	2 ul EtOH	FOS	Unknown	Undetermined
H10	2 ul EtOH	GAPDH_VIC	Unknown	Undetermined
H11	2 ul EtOH	FOS	Unknown	Undetermined
H11	2 ul EtOH	GAPDH_VIC	Unknown	Undetermined
H12	2 ul EtOH	FOS	Unknown	Undetermined
H12	2 ul EtOH	GAPDH_VIC	Unknown	Undetermined

Number of Unknowns

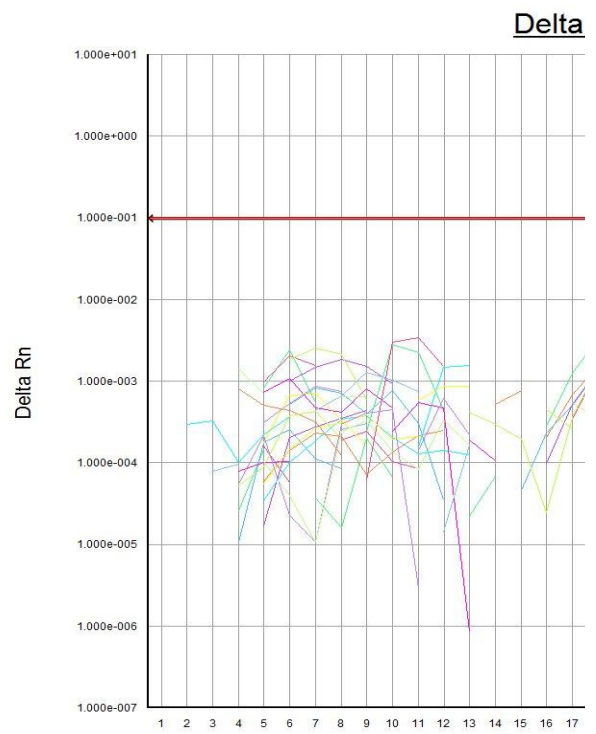
9

19

	Qty
	150
	150
	15
	15
	1.5
	1.5
	0.15
	0.15
	0.015
	0.015
	0.0015
	0.0015
	150
	150
	15
	15
	1.5
	1.5
	0.15
	0.15

	0.015
	0.015
	0.0015
	0.0015
	150
	150
	15
	15
	1.5
	1.5
	0.15
	0.15
	0.015
	0.015
	0.0015
	0.0015
	150
	150
	15
	15
	1.5
	1.5
	0.15
	0.15
	0.015
	0.015
	0.0015
	0.0015
	150
	150
	15
	15
	1.5
	1.5
	0.15
	0.15
	0.015
	0.015
	0.0015
	0.0015
	150
	150
	15
	15
	1.5
	1.5
	0.15
	0.15
	0.015
	0.015
	0.0015
	0.0015
	150
	150
	15
	15
	1.5
	1.5
	0.15
	0.15
	0.015
	0.015

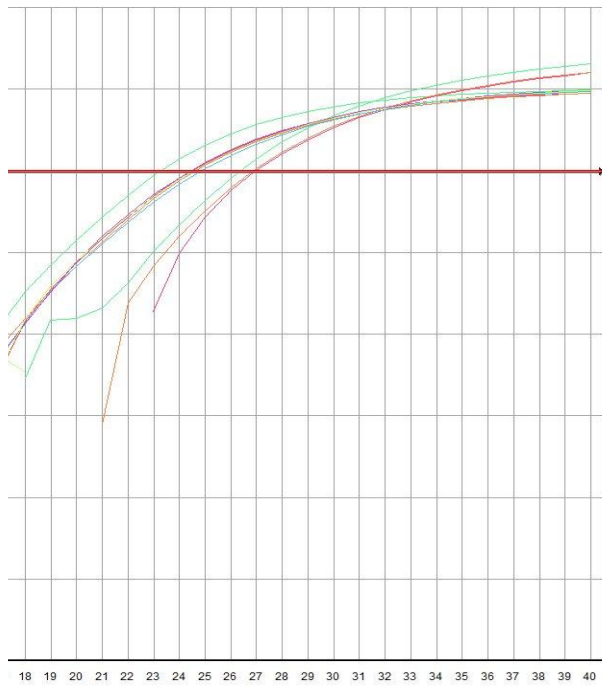
Vliv inhibitorů



C:

Selected Detector: All
Well(s): G7-G12,H7-H12
Document: sk.1 (Standard Curve)

Rn vs Cycle



ycle Number

Document Name: Skupina 2
 Plate Type: Standard Curve
 User: Student

Document Information

Operator: Administrator
 Run Date: Tuesday May 16 2017 14:17:40
 Last Modified: Tue: May 16 2017 16:13:47
 Instrument Type: Applied Biosystems 7500 Real-Time PCR System

Comments:
 SDS v1.4

Thermal Cycler Profile

Stage	Repetitions	Temperature	Time	Ramp Rate
	1	1 50.0 °C		2:00 100
	2	1 95.0 °C		10:00 100
	3	40 95.0 °C		0:15 100
		60.0 °C		1:00 100

Standard 7500 Mode
 Data Collection : Stage 3 Step 2
 PCR Volume: 25 µL

Standard Curve Information

Detector Name	Slope	Intercept	R2	Number of Standar
GAPDH_VIC	-2.689338	34.924797	0.920620	36
CCND3	-2.468792	40.327991	0.841345	17
Jun	-3.614629	50.110546	0.922626	8

Well	Sample Name	Detector	Task	Ct
A1	CCND3	GAPDH_VIC	Standard	18.3935
A1	CCND3	CCND3	Standard	25.0702
A2	CCND3	GAPDH_VIC	Standard	25.8427
A2	CCND3	CCND3	Standard	32.0229
A3	CCND3	GAPDH_VIC	Standard	28.2354
A3	CCND3	CCND3	Standard	34.6097
A4	CCND3	GAPDH_VIC	Standard	30.2413
A4	CCND3	CCND3	Standard	36.5557
A5	CCND3	GAPDH_VIC	Standard	31.8654
A5	CCND3	CCND3	Standard	39.795
A6	CCND3	GAPDH_VIC	Standard	33.6954
A6	CCND3	CCND3	Standard	38.1574
A7	JUN	GAPDH_VIC	Standard	19.2098
A7	JUN	Jun	Standard	30.941
A8	JUN	GAPDH_VIC	Standard	25.4387
A8	JUN	Jun	Standard	36.8211
A9	JUN	GAPDH_VIC	Standard	28.0151
A9	JUN	Jun	Standard	38.461
A10	JUN	GAPDH_VIC	Standard	30.0119

A10	JUN	Jun	Standard	Undetermined
A11	JUN	GAPDH_VIC	Standard	31.8899
A11	JUN	Jun	Standard	Undetermined
A12	JUN	GAPDH_VIC	Standard	33.9661
A12	JUN	Jun	Standard	Undetermined
B1	CCND3	GAPDH_VIC	Standard	18.5239
B1	CCND3	CCND3	Standard	25.0995
B2	CCND3	GAPDH_VIC	Standard	25.8326
B2	CCND3	CCND3	Standard	32.0437
B3	CCND3	GAPDH_VIC	Standard	28.2114
B3	CCND3	CCND3	Standard	34.4897
B4	CCND3	GAPDH_VIC	Standard	30.3148
B4	CCND3	CCND3	Standard	36.0501
B5	CCND3	GAPDH_VIC	Standard	32.0089
B5	CCND3	CCND3	Standard	38.504
B6	CCND3	GAPDH_VIC	Standard	33.9079
B6	CCND3	CCND3	Standard	37.7831
B7	JUN	GAPDH_VIC	Standard	20.1451
B7	JUN	Jun	Standard	31.9663
B8	JUN	GAPDH_VIC	Standard	25.5433
B8	JUN	Jun	Standard	36.7994
B9	JUN	GAPDH_VIC	Standard	28.0885
B9	JUN	Jun	Standard	38.6304
B10	JUN	GAPDH_VIC	Standard	30.1984
B10	JUN	Jun	Standard	Undetermined
B11	JUN	GAPDH_VIC	Standard	31.8479
B11	JUN	Jun	Standard	Undetermined
B12	JUN	GAPDH_VIC	Standard	33.9928
B12	JUN	Jun	Standard	Undetermined
C1	CCND3	GAPDH_VIC	Standard	19.2388
C1	CCND3	CCND3	Standard	25.6467
C2	CCND3	GAPDH_VIC	Standard	25.9362
C2	CCND3	CCND3	Standard	32.0763
C3	CCND3	GAPDH_VIC	Standard	28.2938
C3	CCND3	CCND3	Standard	34.2669
C4	CCND3	GAPDH_VIC	Standard	30.2787
C4	CCND3	CCND3	Standard	36.1434
C5	CCND3	GAPDH_VIC	Standard	31.9479
C5	CCND3	CCND3	Standard	Undetermined
C6	CCND3	GAPDH_VIC	Standard	33.9829
C6	CCND3	CCND3	Standard	38.6347
C7	JUN	GAPDH_VIC	Standard	20.1399
C7	JUN	Jun	Standard	31.7631
C8	JUN	GAPDH_VIC	Standard	25.5344
C8	JUN	Jun	Standard	36.2194
C9	JUN	GAPDH_VIC	Standard	28.1155
C9	JUN	Jun	Standard	Undetermined
C10	JUN	GAPDH_VIC	Standard	30.2569
C10	JUN	Jun	Standard	Undetermined
C11	JUN	GAPDH_VIC	Standard	31.9398

C11	JUN	Jun	Standard	Undetermined
C12	JUN	GAPDH_VIC	Standard	34.1667
C12	JUN	Jun	Standard	Undetermined
D1	20% FBS	CCND3	Unknown	29.1614
D2	20% FBS	CCND3	Unknown	29.0937
D3	20% FBS	CCND3	Unknown	29.1116
D4	bez FBS	CCND3	Unknown	28.9889
D5	bez FBS	CCND3	Unknown	28.9082
D6	bez FBS	CCND3	Unknown	28.879
D9	noRT	GAPDH_VIC	Unknown	38.2706
D9	noRT	CCND3	Unknown	39.4046
D10	noRT	GAPDH_VIC	Unknown	Undetermined
D10	noRT	Jun	Unknown	35.4734
D11	NK	GAPDH_VIC	Unknown	38.5132
D11	NK	CCND3	Unknown	38.9134
D12	NK	GAPDH_VIC	Unknown	Undetermined
D12	NK	Jun	Unknown	Undetermined
E1	20% FBS	Jun	Unknown	33.7131
E2	20% FBS	Jun	Unknown	33.7083
E3	20% FBS	Jun	Unknown	33.3043
E4	bez FBS	Jun	Unknown	32.7198
E5	bez FBS	Jun	Unknown	32.4231
E6	bez FBS	Jun	Unknown	32.241
E9	noRT	GAPDH_VIC	Unknown	37.7673
E9	noRT	CCND3	Unknown	37.439
E10	noRT	GAPDH_VIC	Unknown	Undetermined
E10	noRT	Jun	Unknown	35.8698
E11	NK	GAPDH_VIC	Unknown	38.4244
E11	NK	CCND3	Unknown	Undetermined
E12	NK	GAPDH_VIC	Unknown	Undetermined
E12	NK	Jun	Unknown	Undetermined
F1	20% FBS	GAPDH	Unknown	20.2913
F2	20% FBS	GAPDH	Unknown	20.7614
F3	20% FBS	GAPDH	Unknown	20.3764
F4	bez FBS	GAPDH	Unknown	20.0838
F5	bez FBS	GAPDH	Unknown	20.0465
F6	bez FBS	GAPDH	Unknown	20.0074
G1	20% FBS	GAPDH_VIC	Unknown	22.4943
G1	20% FBS	CCND3	Unknown	28.6324
G2	20% FBS	GAPDH_VIC	Unknown	22.507
G2	20% FBS	CCND3	Unknown	28.627
G3	20% FBS	GAPDH_VIC	Unknown	22.4893
G3	20% FBS	CCND3	Unknown	28.732
G4	bez FBS	GAPDH_VIC	Unknown	22.2209
G4	bez FBS	CCND3	Unknown	28.5485
G5	bez FBS	GAPDH_VIC	Unknown	22.1242
G5	bez FBS	CCND3	Unknown	28.4723
G6	bez FBS	GAPDH_VIC	Unknown	22.1082
G6	bez FBS	CCND3	Unknown	28.4504
G7	20% FBS 1 ul EtOH	GAPDH_VIC	Unknown	27.3844

G7	20% FBS 1 ul EtOH	CCND3	Unknown	30.1352
G8	20% FBS 1 ul EtOH	GAPDH_VIC	Unknown	27.6088
G8	20% FBS 1 ul EtOH	CCND3	Unknown	30.2859
G9	20% FBS 1 ul EtOH	GAPDH_VIC	Unknown	29.7969
G9	20% FBS 1 ul EtOH	CCND3	Unknown	30.8013
G10	bez FBS 1 ul EtOH	GAPDH_VIC	Unknown	27.9581
G10	bez FBS 1 ul EtOH	CCND3	Unknown	Undetermined
G11	bez FBS 1 ul EtOH	GAPDH_VIC	Unknown	Undetermined
G11	bez FBS 1 ul EtOH	CCND3	Unknown	Undetermined
G12	bez FBS 1 ul EtOH	GAPDH_VIC	Unknown	35.3945
G12	bez FBS 1 ul EtOH	CCND3	Unknown	Undetermined
H1	20% FBS	GAPDH_VIC	Unknown	22.0656
H1	20% FBS	Jun	Unknown	33.4399
H2	20% FBS	GAPDH_VIC	Unknown	22.3191
H2	20% FBS	Jun	Unknown	33.5406
H3	20% FBS	GAPDH_VIC	Unknown	22.1659
H3	20% FBS	Jun	Unknown	33.5191
H4	bez FBS	GAPDH_VIC	Unknown	21.943
H4	bez FBS	Jun	Unknown	32.6125
H5	bez FBS	GAPDH_VIC	Unknown	21.907
H5	bez FBS	Jun	Unknown	32.5121
H6	bez FBS	GAPDH_VIC	Unknown	21.9092
H6	bez FBS	Jun	Unknown	32.2909
H7	20% FBS 2 ul EtOH	GAPDH_VIC	Unknown	Undetermined
H7	20% FBS 2 ul EtOH	Jun	Unknown	Undetermined
H8	20% FBS 2 ul EtOH	GAPDH_VIC	Unknown	Undetermined
H8	20% FBS 2 ul EtOH	Jun	Unknown	Undetermined
H9	20% FBS 2 ul EtOH	GAPDH_VIC	Unknown	Undetermined
H9	20% FBS 2 ul EtOH	Jun	Unknown	Undetermined
H10	bez FBS 2 ul EtOH	GAPDH_VIC	Unknown	Undetermined
H10	bez FBS 2 ul EtOH	Jun	Unknown	Undetermined
H11	bez FBS 2 ul EtOH	GAPDH_VIC	Unknown	Undetermined
H11	bez FBS 2 ul EtOH	Jun	Unknown	Undetermined
H12	bez FBS 2 ul EtOH	GAPDH_VIC	Unknown	Undetermined
H12	bez FBS 2 ul EtOH	Jun	Unknown	Undetermined

ds Number of Unknowns
 21
 18
 14

	Qty
	150
	150
	15
	15
	1.5
	1.5
	0.15
	0.15
	0.015
	0.015
	0.0015
	0.0015
	150
	150
	15
	15
	1.5
	1.5
	0.15

	0.15
	0.015
	0.015
	0.0015
	0.0015
	150
	150
	15
	15
	1.5
	1.5
	0.15
	0.15
	0.015
	0.015
	0.0015
	0.0015
	150
	150
	15
	15
	1.5
	1.5
	0.15
	0.15
	0.015
	0.015
	0.0015
	0.0015
	150
	150
	15
	15
	1.5
	1.5
	0.15
	0.15
	0.015
	0.015
	0.0015
	0.0015
	150
	150
	15
	15
	1.5
	1.5
	0.15
	0.15
	0.015
	0.015
	0.0015
	0.0015
	150
	150
	15
	15
	1.5
	1.5
	0.15
	0.15
	0.015

