

Rozsivky za živa

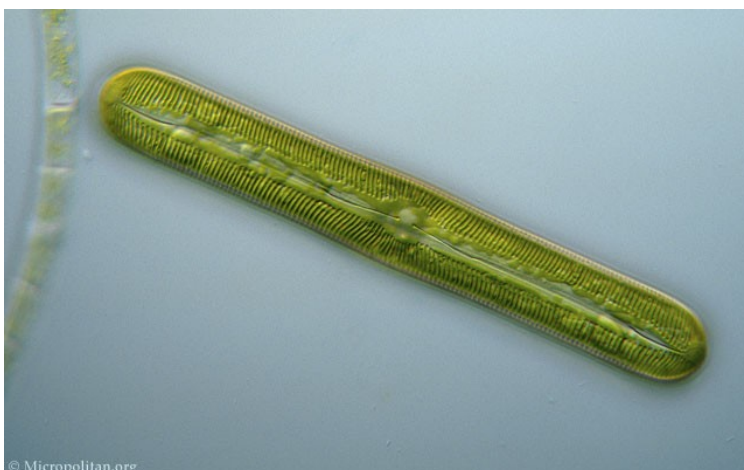
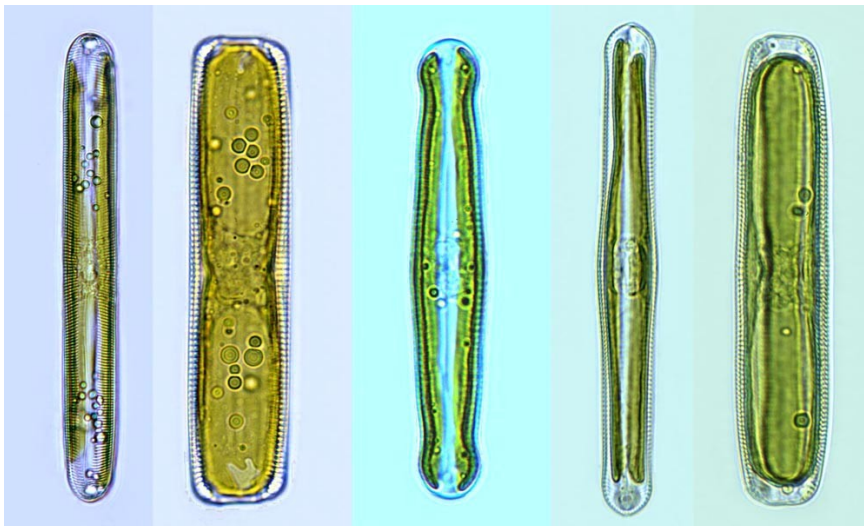
Symetrické rozsivky s raphe na obou valvách

Navicula



Navicula gregaria

Pinnularia



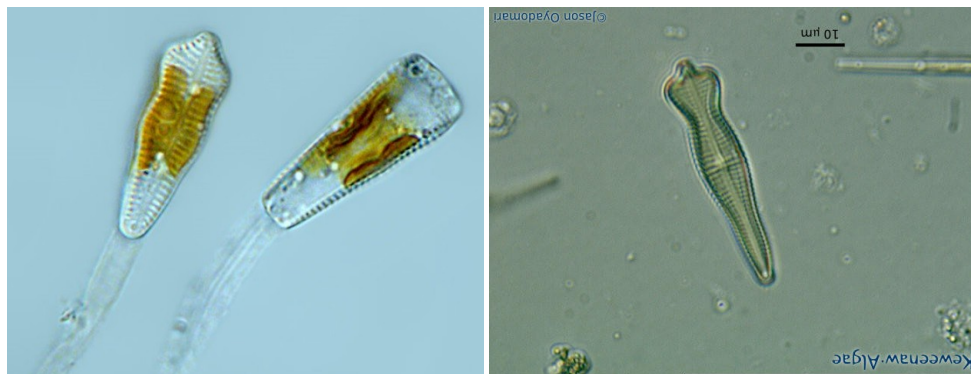
Rozsivky za živa

Asymetrické rozsivky s raphe na obou valvách

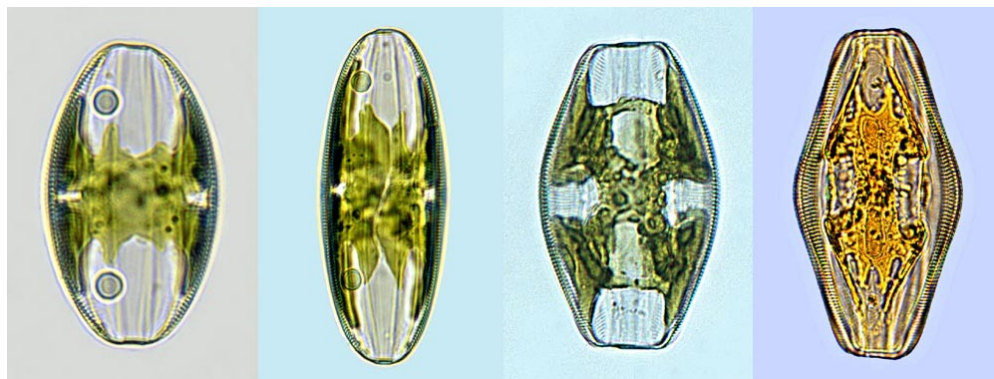
Gyrosigma



Gomphonema



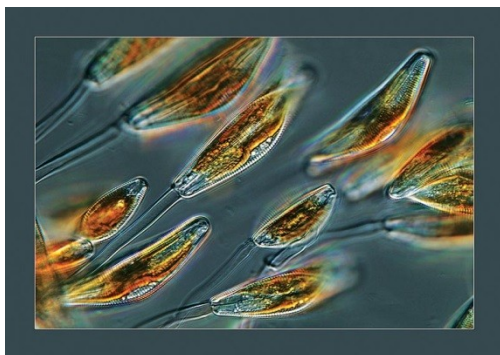
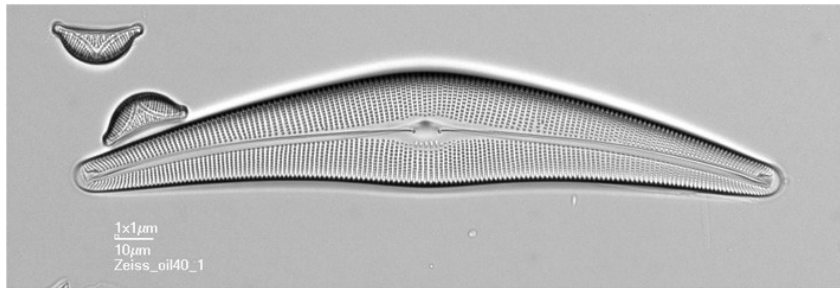
Amphora



Rozsivky za živa

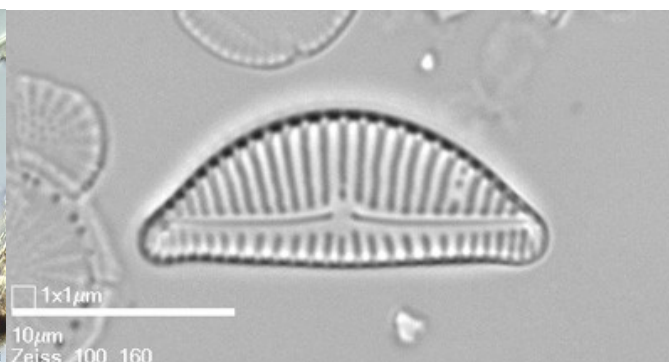


Cymbella



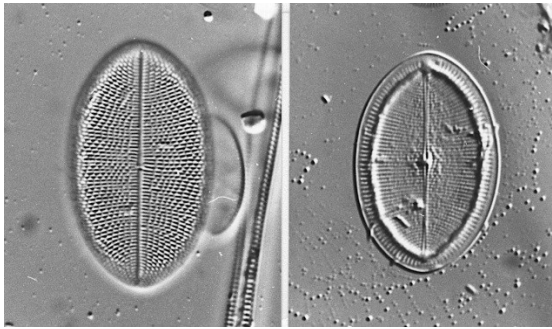
Cymbella- slizové stopky

Encyonema- slizové trubice

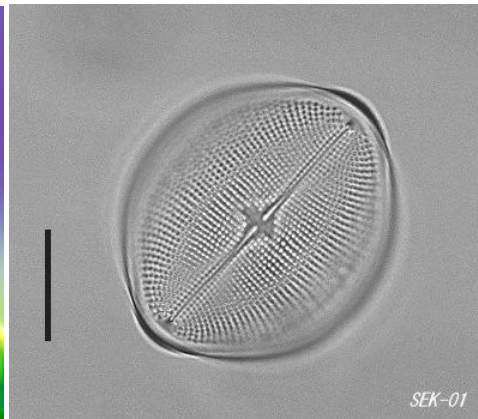
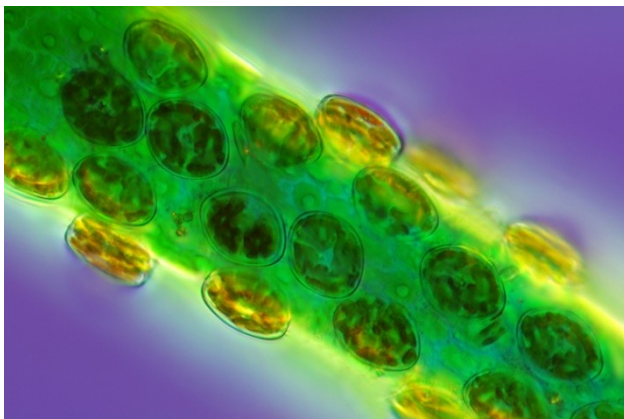


Rozsivky za živa

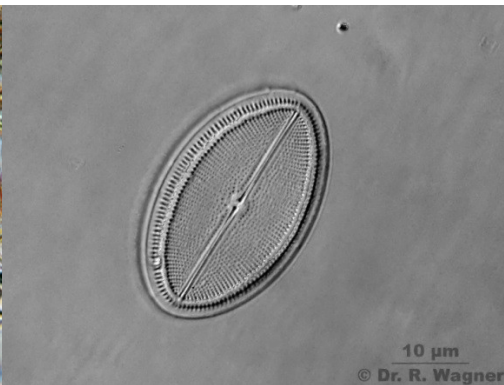
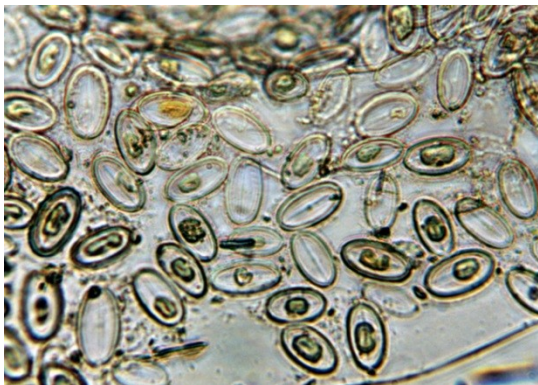
Monoraphidní rozsivky



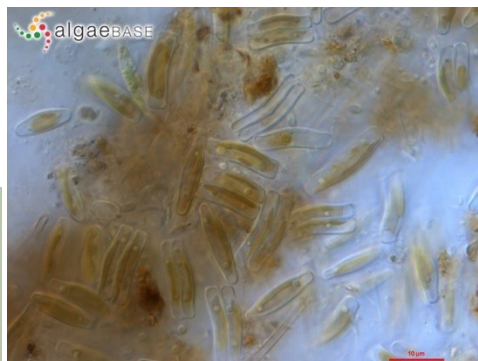
Cocconeis pediculus



Cocconeis placentula



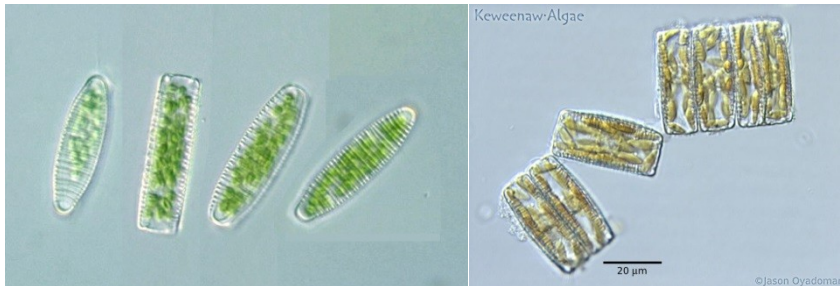
Achnanthis minutissimum



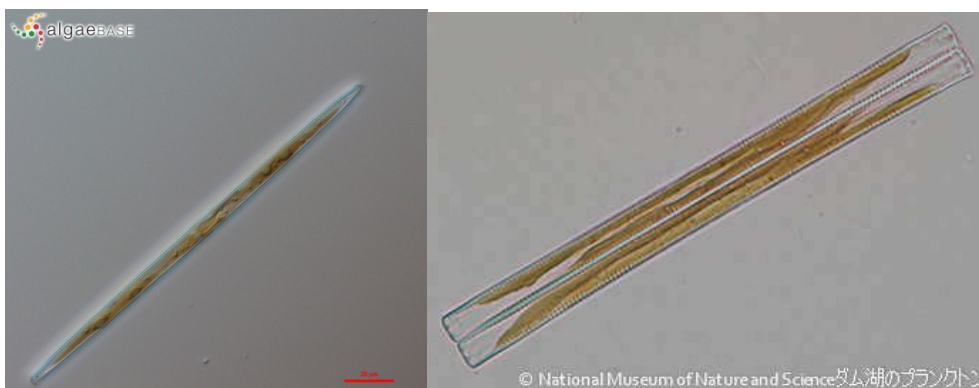
Rozsivky za živa

Araphidní (rozsivky bez raphe)

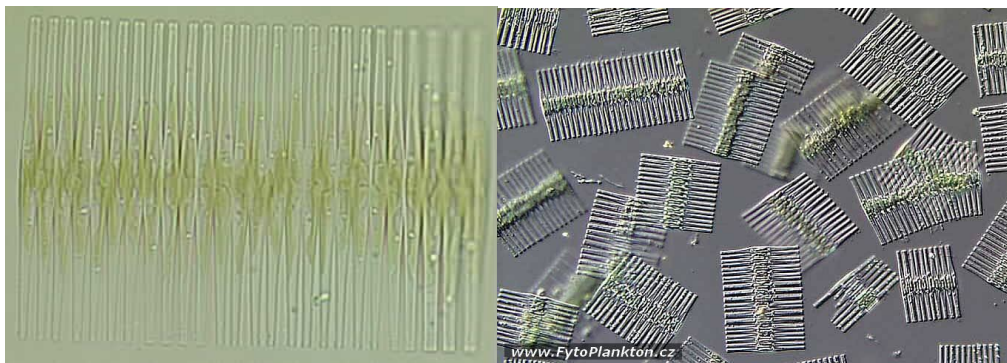
Diatoma



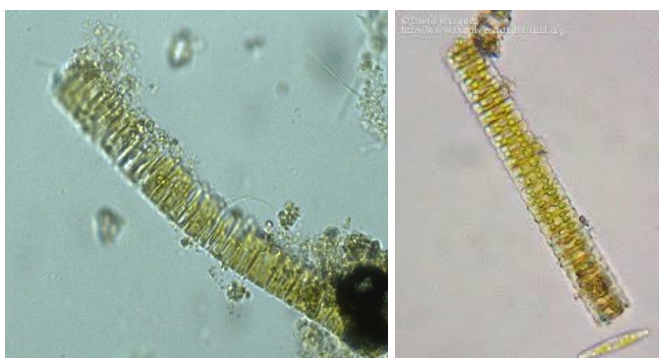
Ulnaria



Fragilaria crotonensis



Fragilaria construens



Rozsivky za živa

Rozsivky s kanálkovou raphe

Nitzschia



Surirella



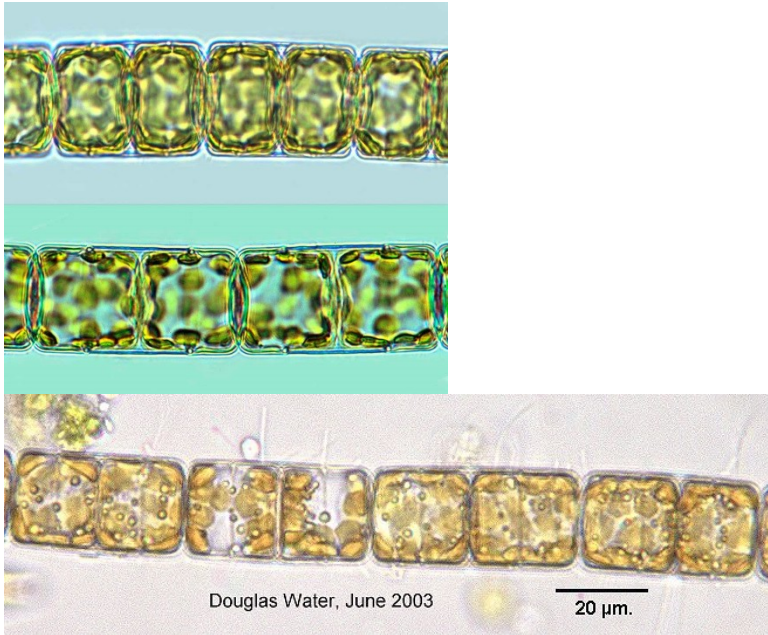
Cymatopleura



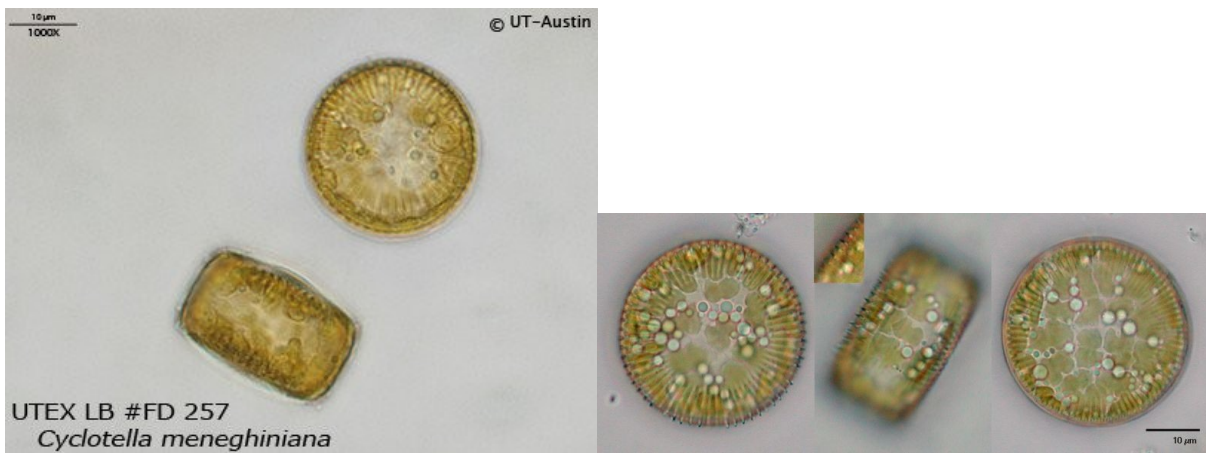
Rozsivky za živa

Centrické rozsivky

Melosira



Cyclotella



Aulacoseira

