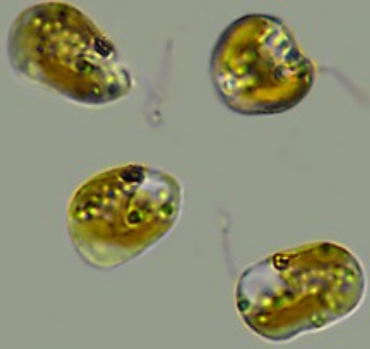


# Sinice a řasy v rozmanitých limnických biotopech

- 1. hodina 20.2. 2017

# Bazének ve skleníku

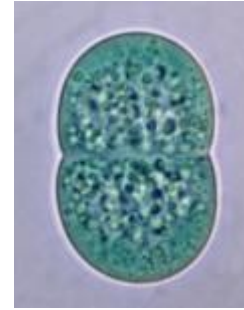
© Enzo Azzarello



10  $\mu$ m

*Chromulina rosanofii*  
druh neustonové  
blanky

*Cyanothece aeruginosa*



*Coelomoron* sp. - metafyton



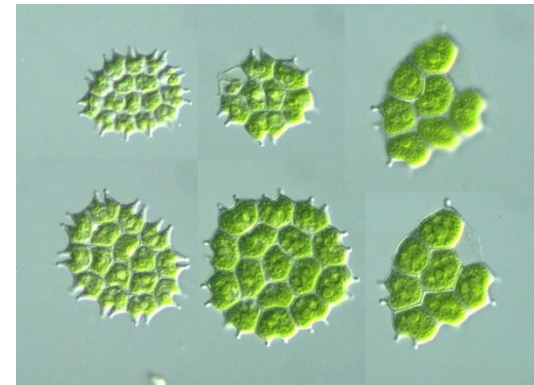
10  $\mu$ m

*Didymocystis* sp.



UTEX LB #2461  
*Didymocystis inermis*

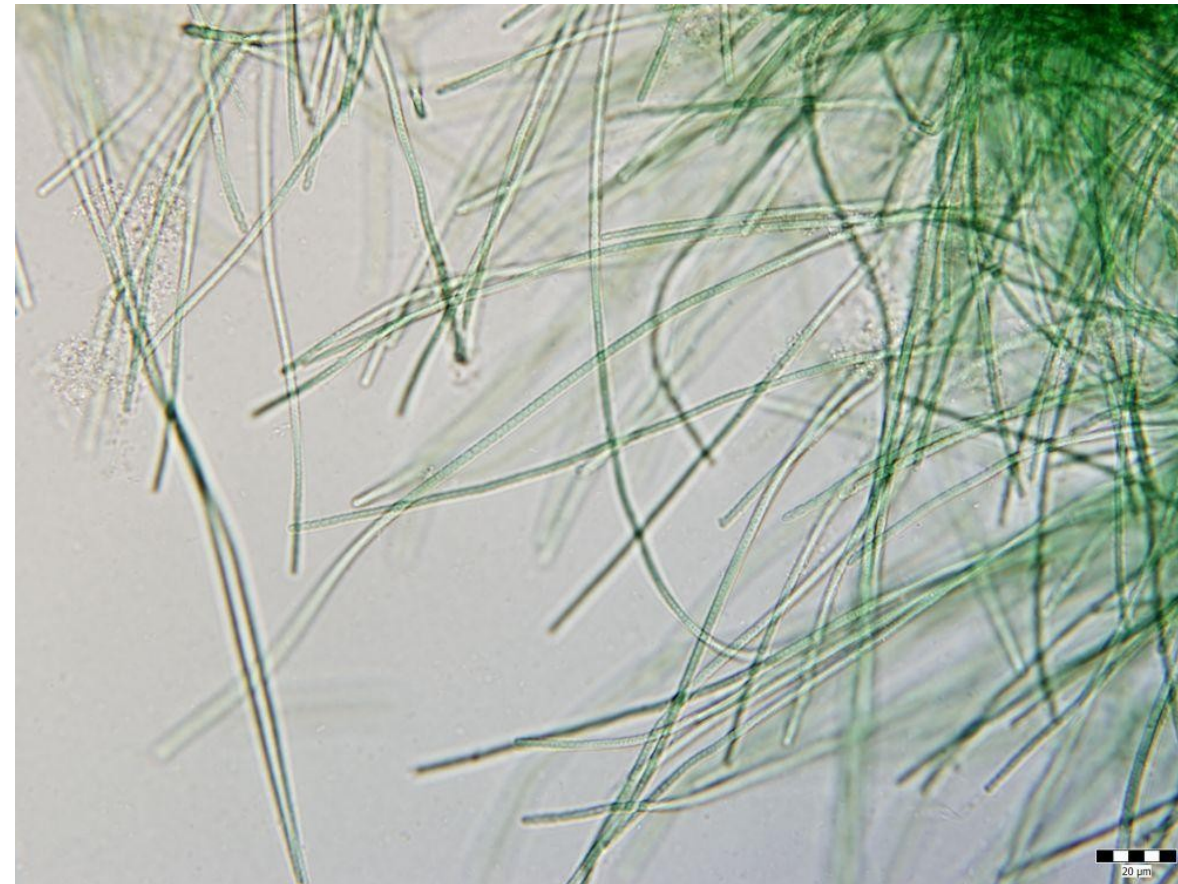
*Pediastrum integrum*, nárostové



*Lepocinclis tripteris*



*Leptolyngbia* sp.

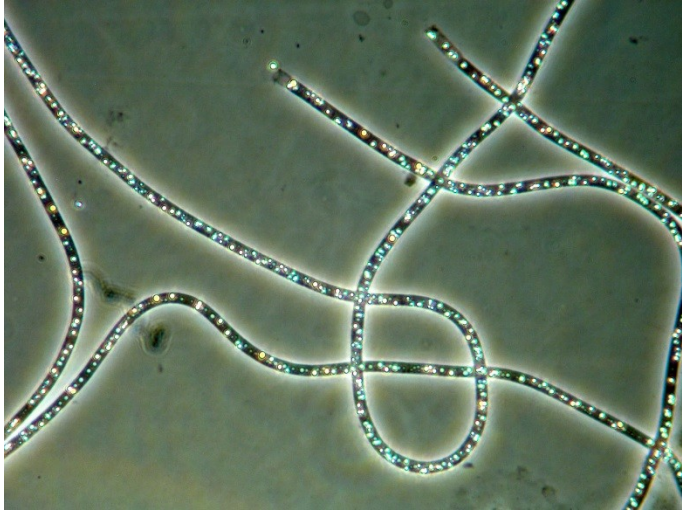


Klíčící *Uronema* sp.



# Teplý pramen u Pasohlávek

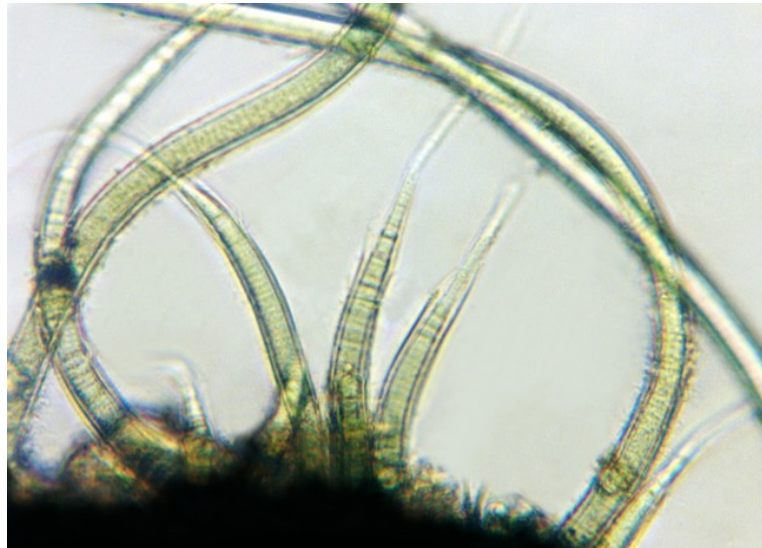
Bakterie *Beggiatoa* sp. se  
sirnými inkluzemi



*Phormidium* sp.



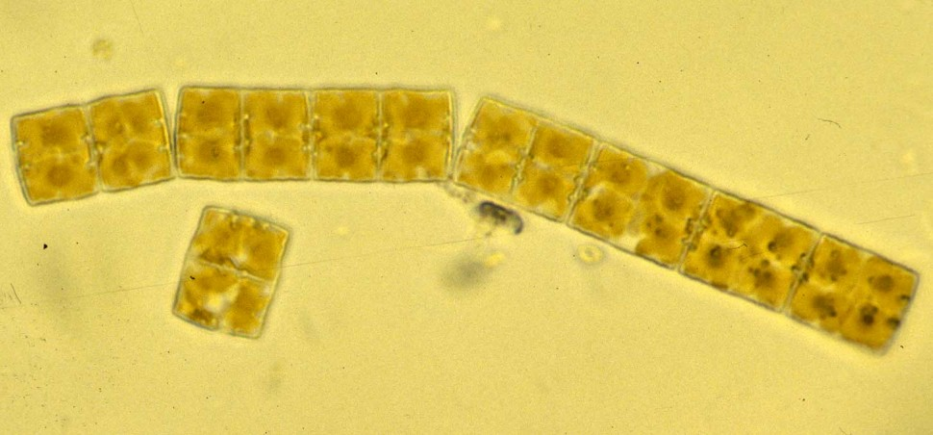
*Synechocystis* sp.



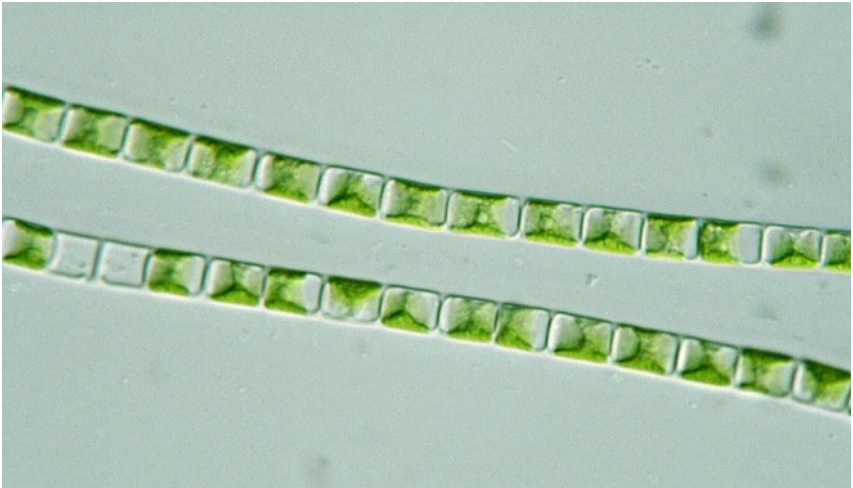
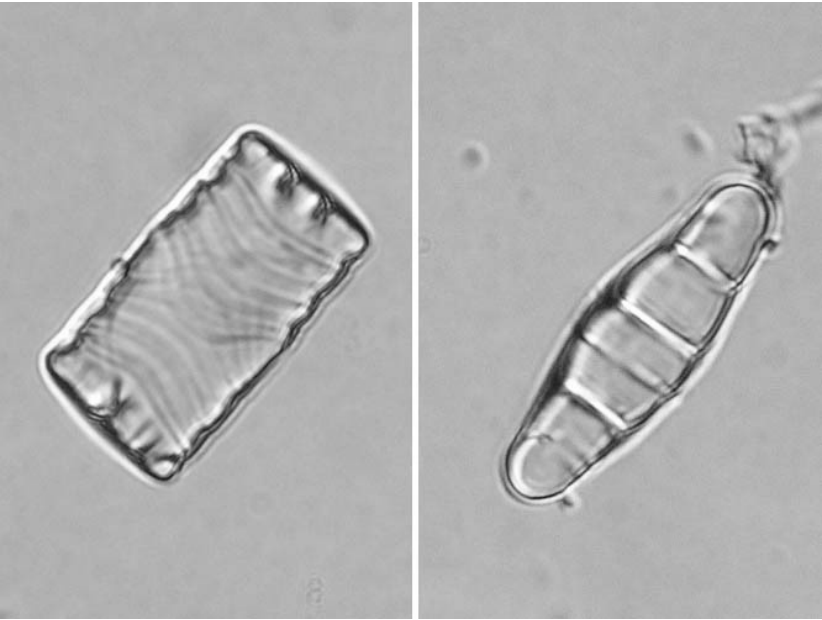
*Homeothrix* sp.

Jeseníky (Prameny)

*Diatoma mesodon*



*Aphanochaete repens*



*Klebsormidium* sp.

*Calothrix* sp.



# Sinice a řasy v rozmanitých limnických biotopech

- 3. hodina 6.3. 2017

Vitiněves bažinka



*Characiopsis*

Vitiněves rybníček



*Mallomonas*

Nádrž Landštejn



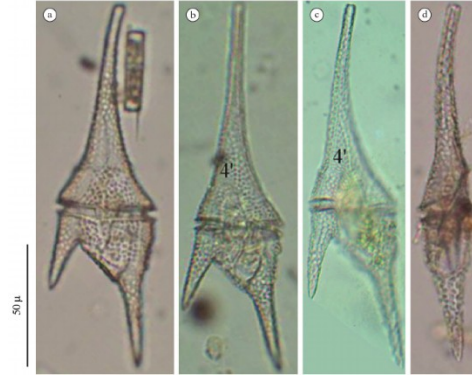
*Dolichospermum (danicum)*





*Oocystis marssonii*

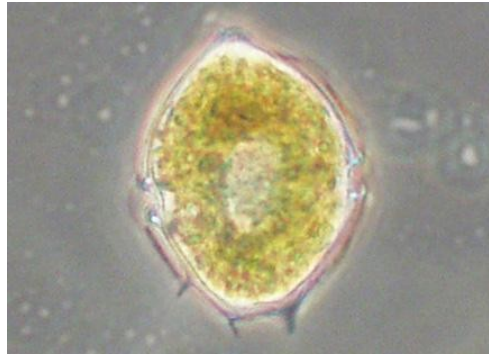
*Ceratium furcoides*



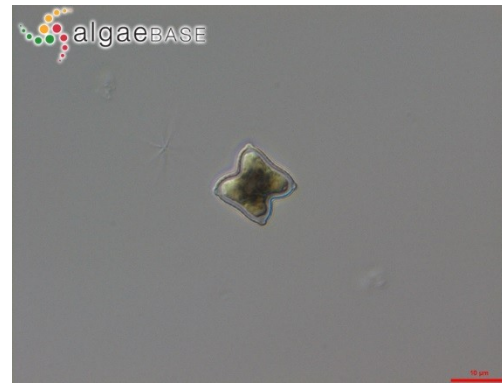
*Cosmarium subprotumidum*



*Peridinium aciculiferum*



*Tetraedron minimum*



*Elakatothrix*



*Coelastrum reticulatum (Hariatina reticulata)*

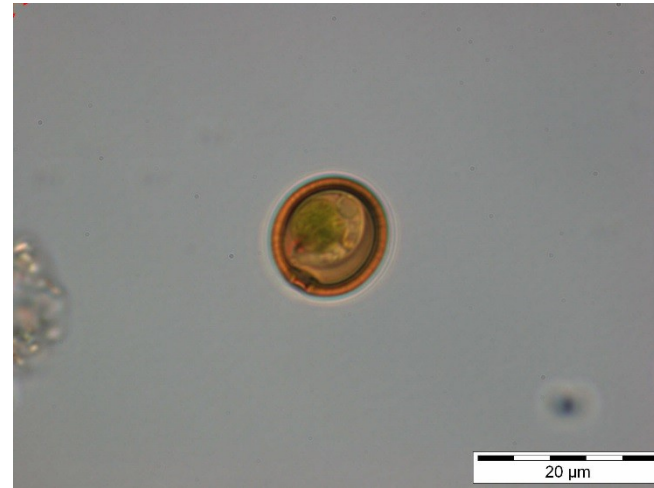


# Čepelský rybník

*Crucigeniella*



*Trachelomonas volvocina*



*Pediastrum boryanum*



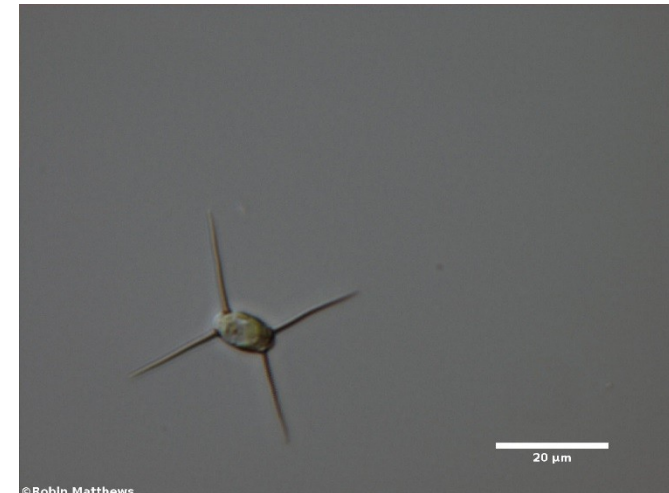
*Closterium limneticum*



*Tetrastrum komarekii*

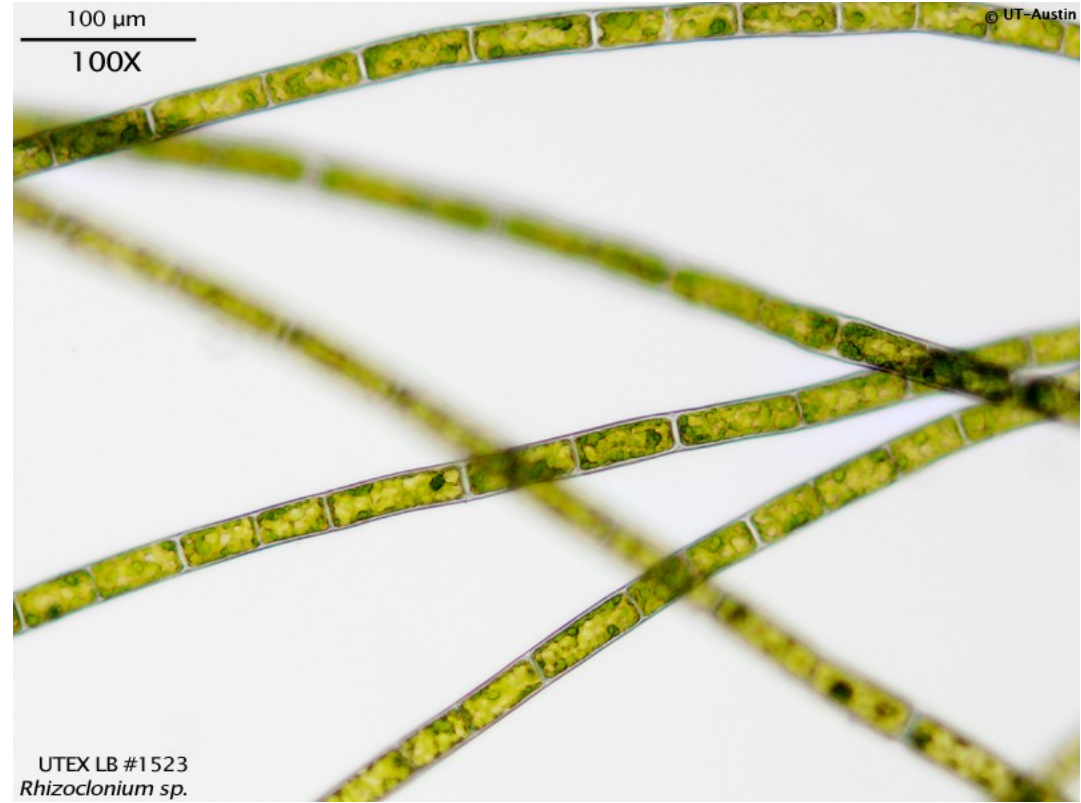


*Lagerheimia genevensis*



akvárium

*Audouiniella* a *Rhizeoclonium*



# Sinice a řasy v rozmanitých limnických biotopech

- 4. hodina 13.3. 2017

*Komvophoron*



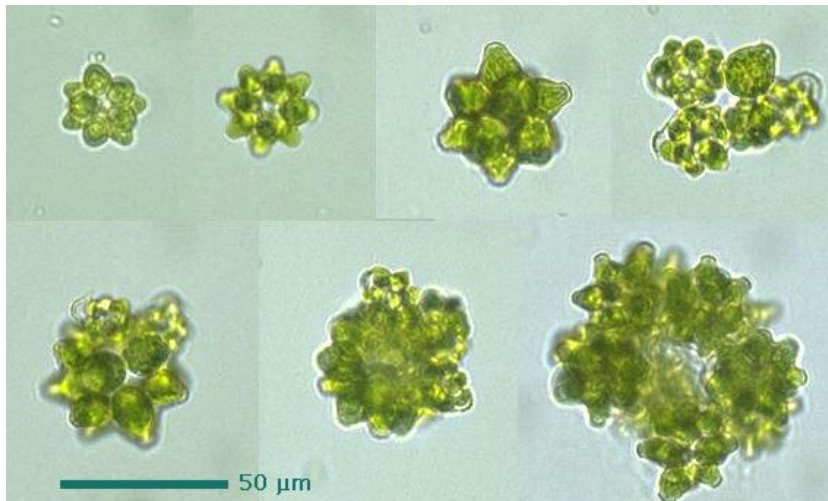
*Pseudanabaena catenata*



*Monoraphidium griffithii*



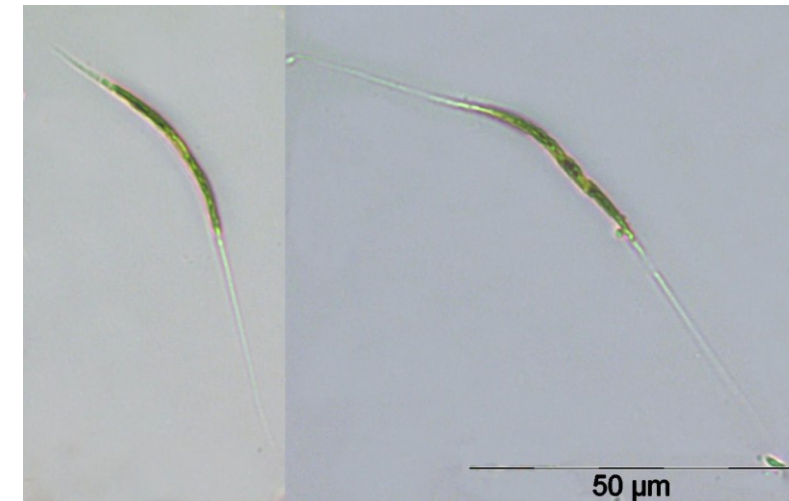
*Coelastrum spaericum*



*Monoraphidium contortum*



*Koliella longiseta*

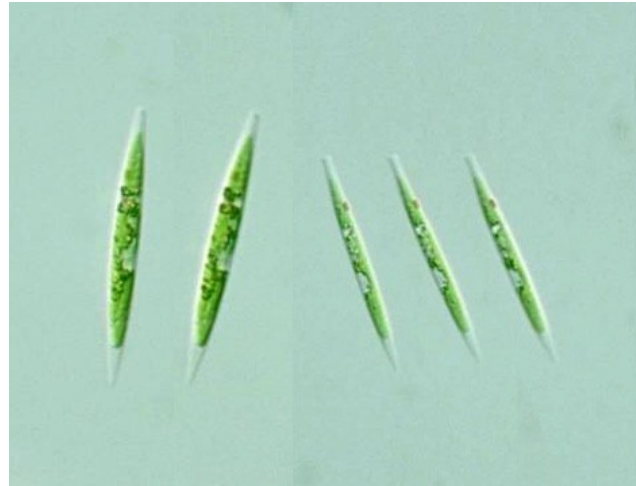


Botanická zahrada MU- hlavní jezírko, metafyton, bentos

*Geitlerinema splendidum*



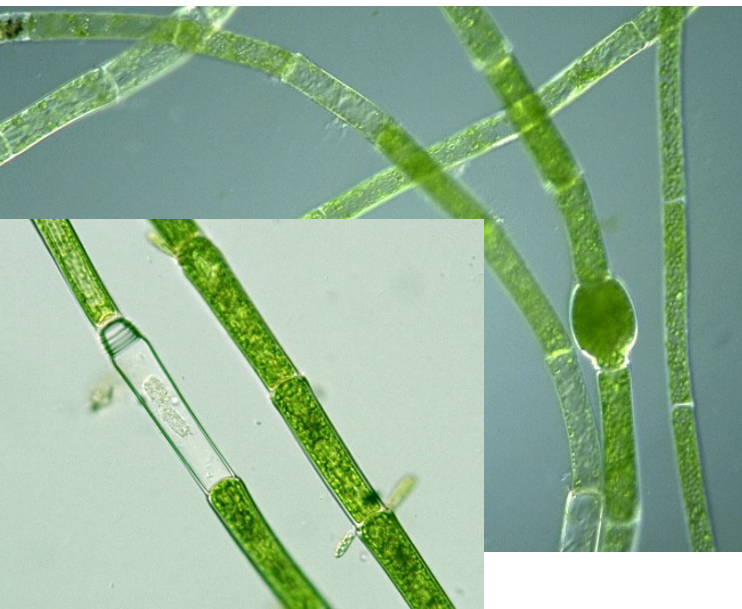
*Chlorogonium*



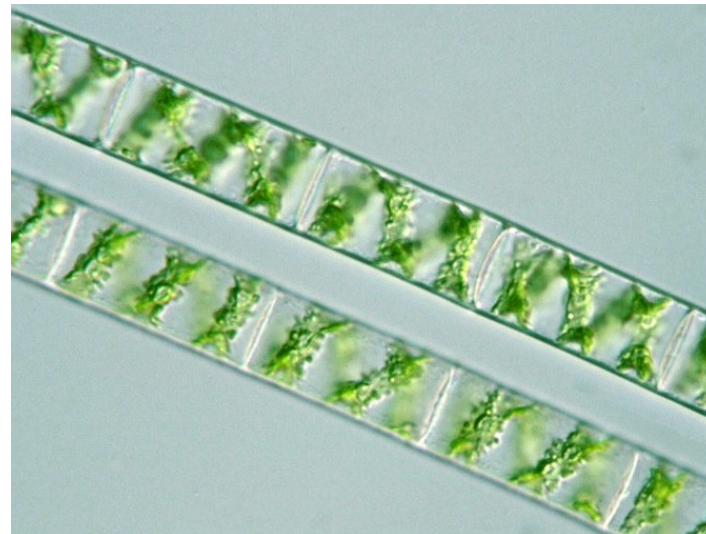
*Navicula radiosa*



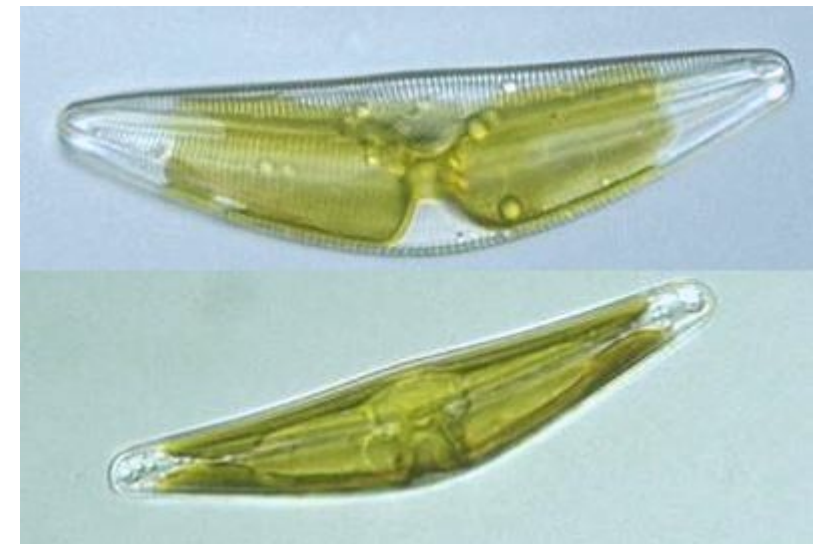
*Oedogonium*



*Spirogyra*



*Cymbella*

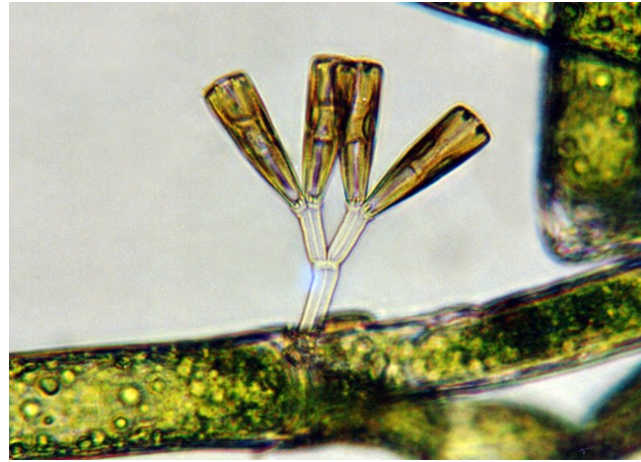


Botanická zahrada MU- hlavní jezírko, metafyton, bentos

*Desmodesmus communis*



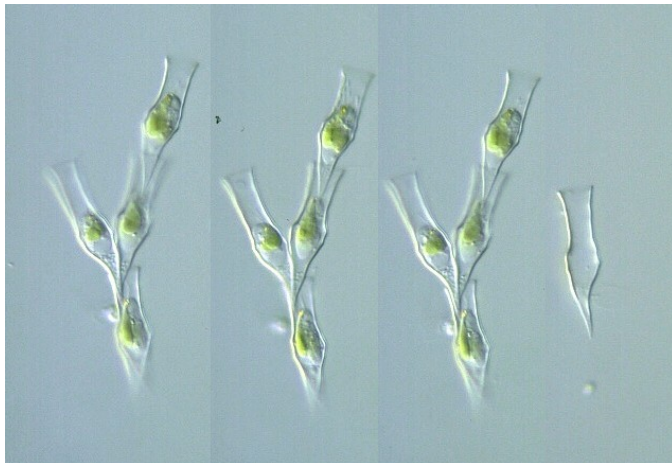
*Gomphonema*



*Mougeotia*



*Dinobryon*



*Ulnaria ulna*



*Gymnodinium*



Botanická zahrada MU- hlavní jezírko, metafyton, bentos

*Characium rostratum*



*Eucapsis*



+ vířníci *Vorticella* a *Philodina* (píjavenka)

