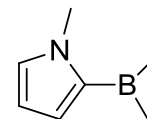
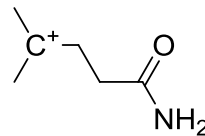
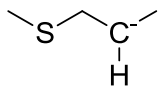
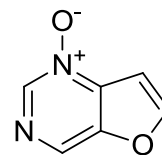
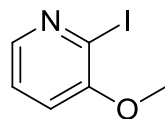
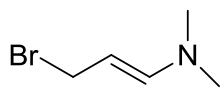
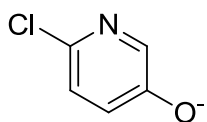
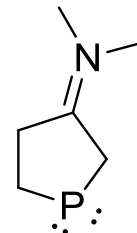
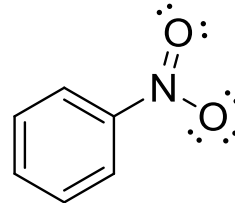
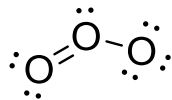
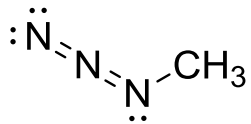
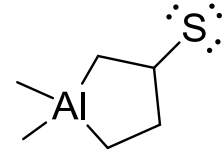
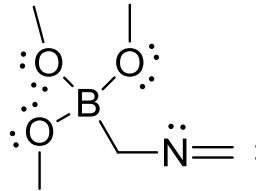
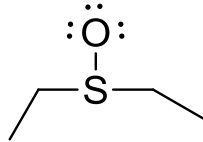
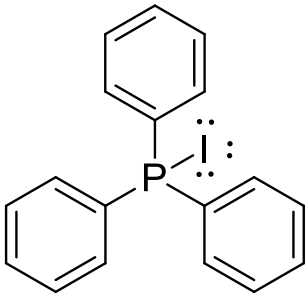
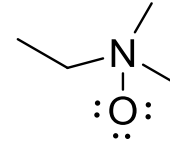
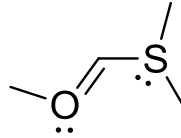
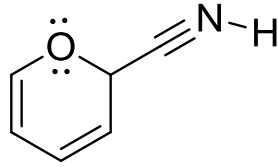
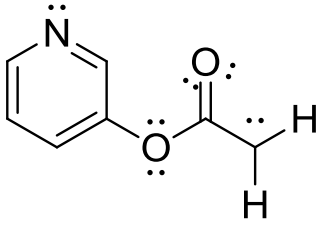


Doplňte volné el. páry



Doplňte náboje



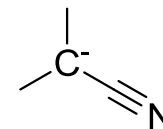
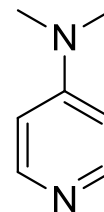
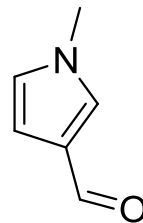
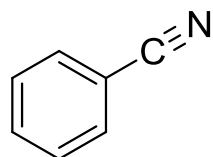
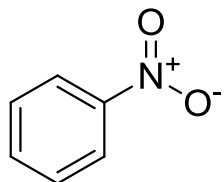
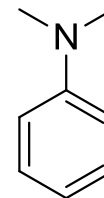
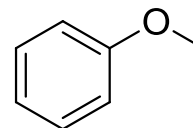
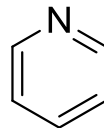
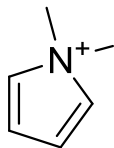
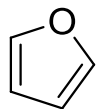
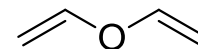
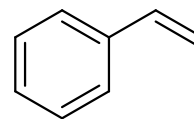
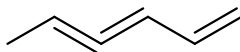
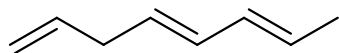
Zhodnoťte el. efekty

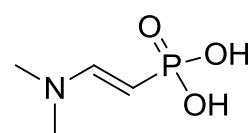
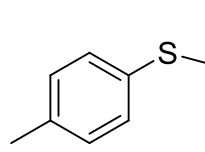
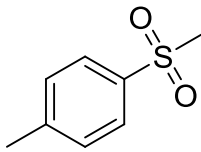
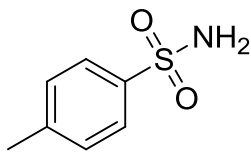
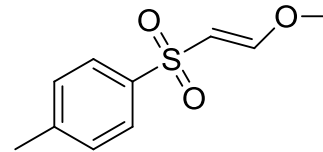
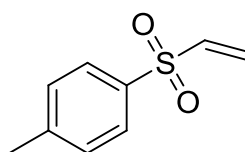
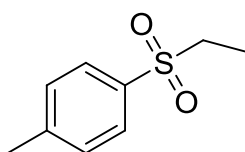
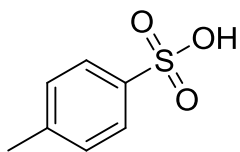
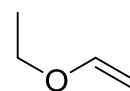
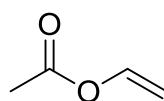
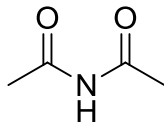
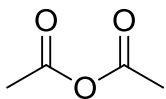
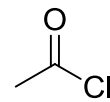
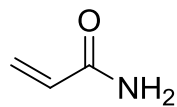
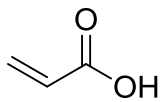
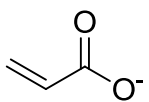
indukční efekty

mezomerní efekty

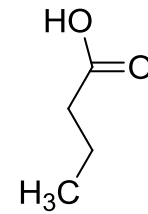
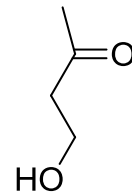
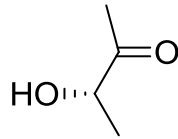
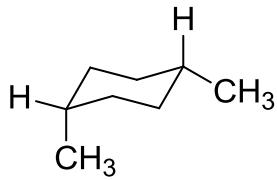
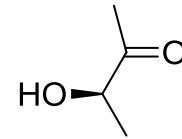
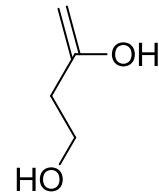
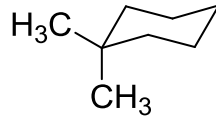
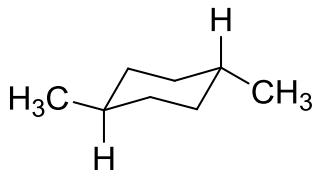
volné el. Páry

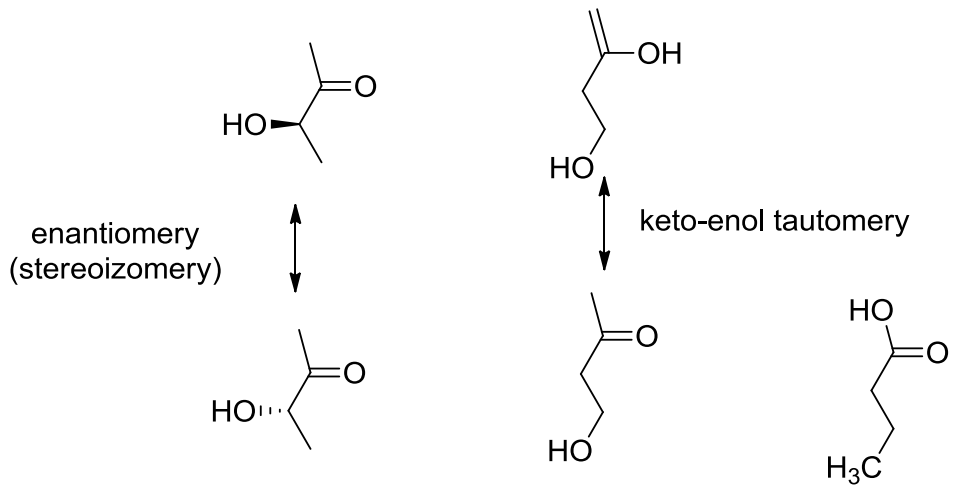
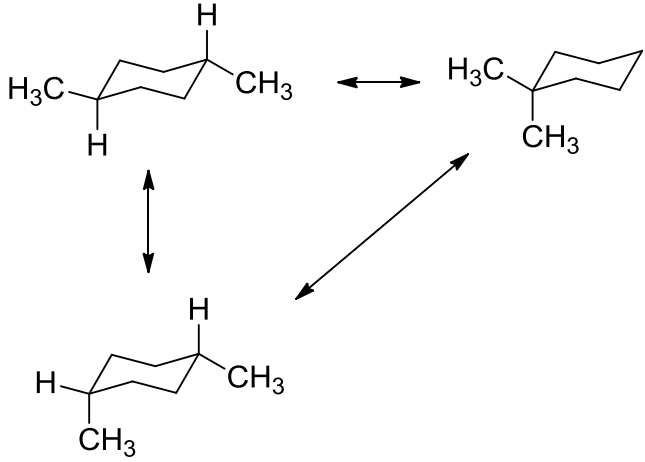
geometrie a konjugace p orbitalů a volných el. párů



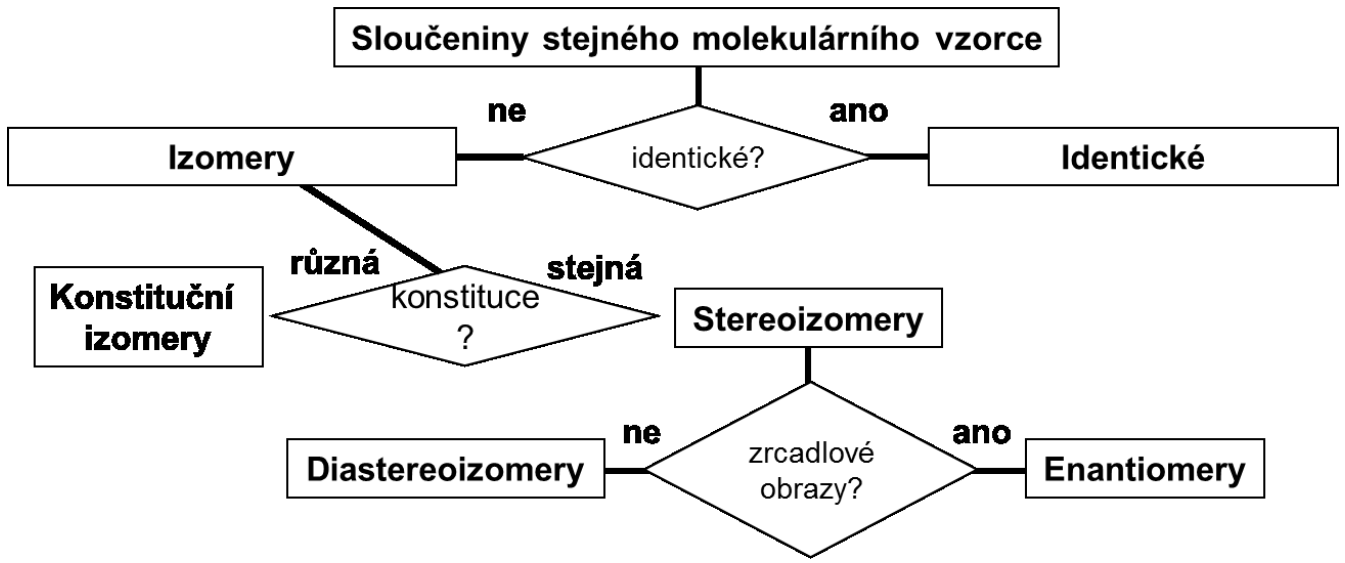


Izomerie

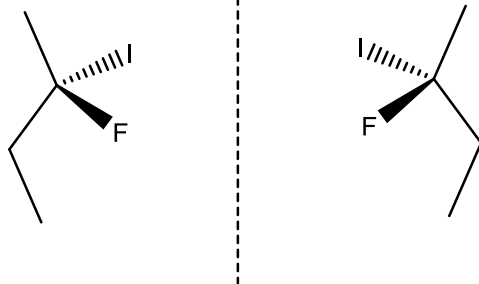




konstitucni izomery 5x



Enantiomery



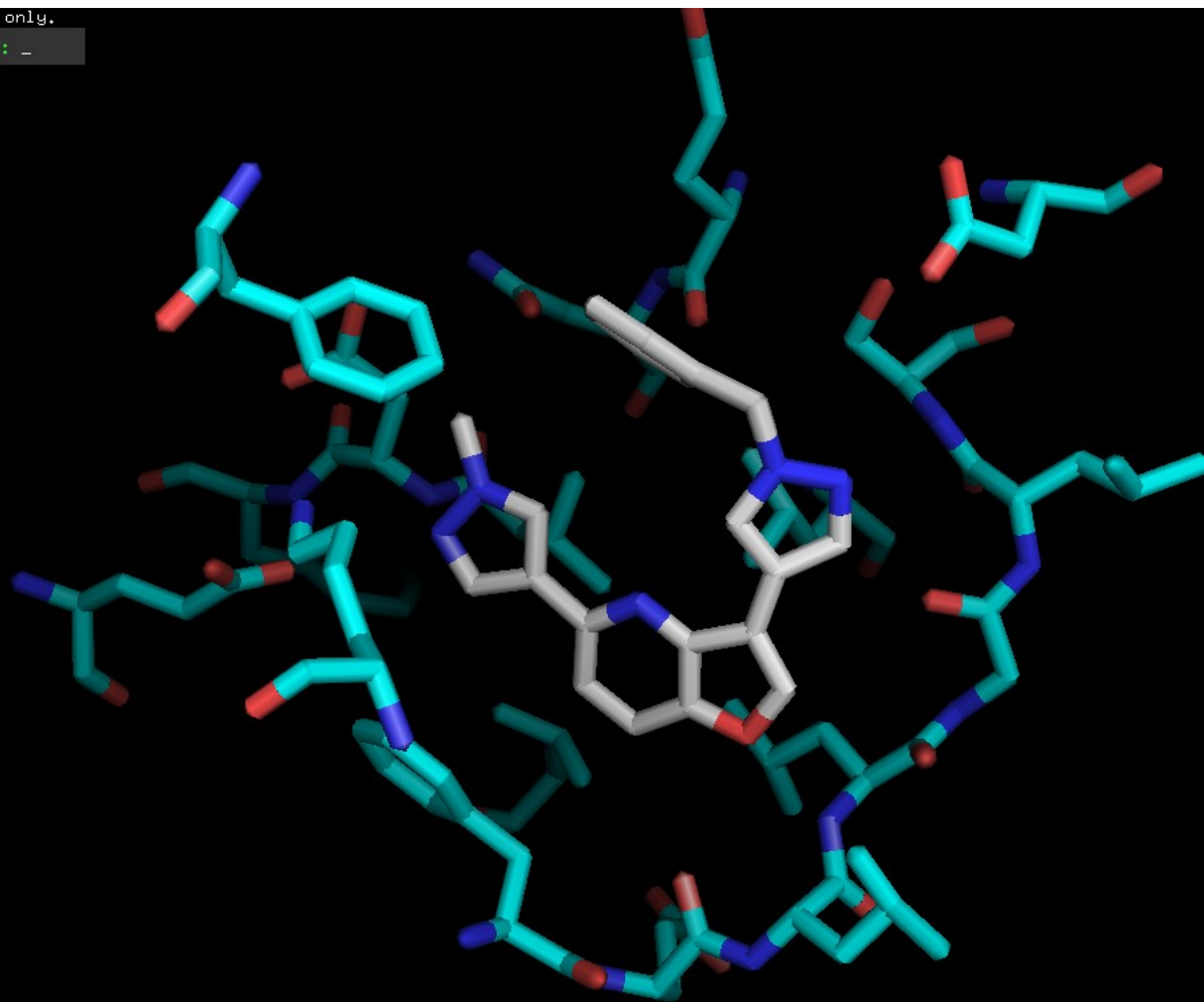
Samuel-L-Jackson

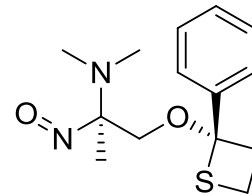
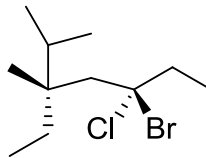
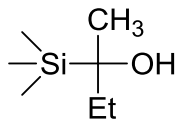
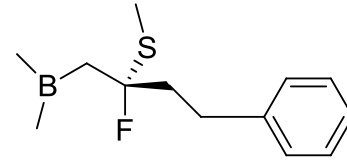
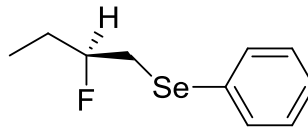
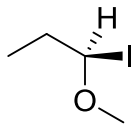
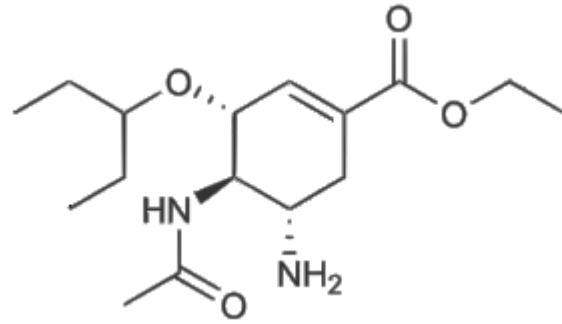


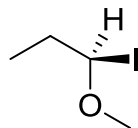
Samuel-D-Jackson

PyMOL for evaluation only.

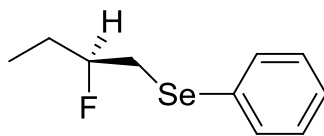
Renaming Dyrk1a to: _



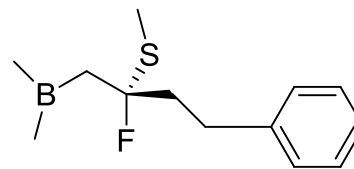




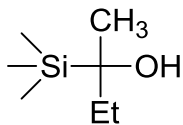
(*R*)-1-iod-1-methoxypropan



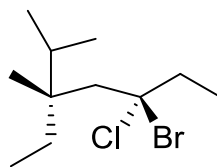
(*S*)-(2-fluorbutyl)(fenyl)selan



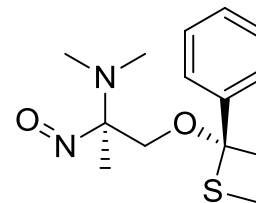
(*R*)-(2-fluor-2-(methylthio)-4-fenylbutyl)dimethylboran



(*R*)-2-(trimethylsilyl)butan-2-ol

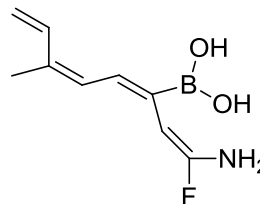
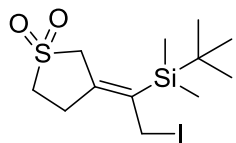


(3*S*,5*R*)-5-brom-5-chlor-3-ethyl-2,3-dimethylheptan

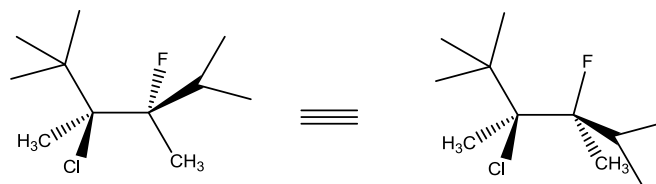
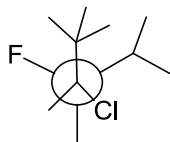


(*R*)-*N,N*-dimethyl-2-nitroso-1-(((*R*)-2-fenylthietan-2-yl)oxy)propan-2-amin

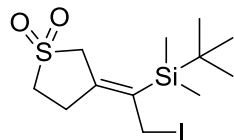
- E nebo Z?



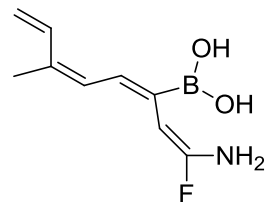
- Newmanova projekce



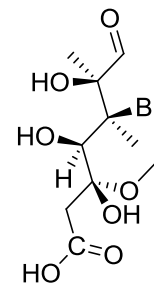
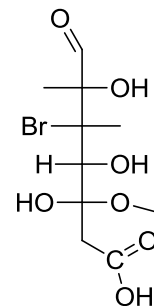
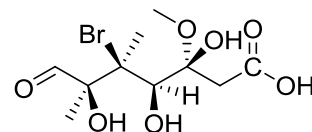
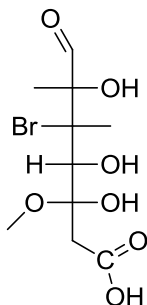
Zakreslete v klínkové rep., doplňte stereodeskripty, nakreslete nejstabilnější konformaci v obou reprezentacích.



(Z)-3-(1-(*tert*-butyldimethylsilyl)-2-iodoethylidene)tetrahydrothiofen 1,1-dioxid



((1*E*,3*Z*,5*Z*)-1-amino-1-fluor-6-methylocta-1,3,5,7-tetraen-3-yl)boritá kyselina



(3*R*,4*R*,5*S*,6*S*)-5-brom-3,4,6-trihydroxy-3-methoxy-5,6-dimethyl-7-oxoheptanová kyselina

