

MONOLITICKÉ KAPILÁRNÍ KOLONY

Jiří Urban

urban@chemi.muni.cz

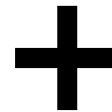
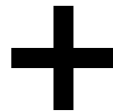


Ústav chemie, Přírodovědecká fakulta, Masarykova univerzita, Brno, UKB, A14/334

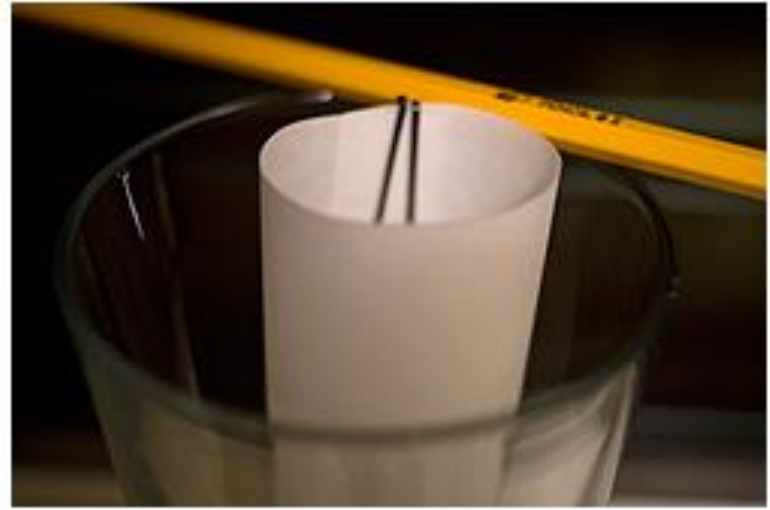
JSOU STEJNÉ?



JSOU STEJNÉ?



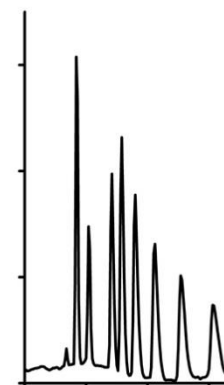
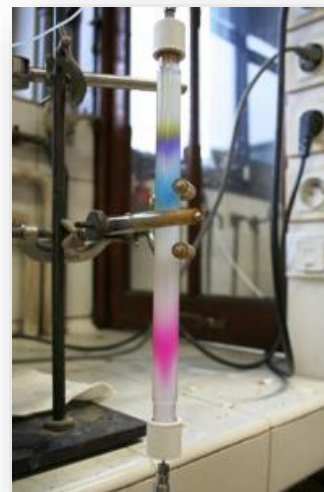
CHROMATOGRAFIE



JSOU STEJNÉ?

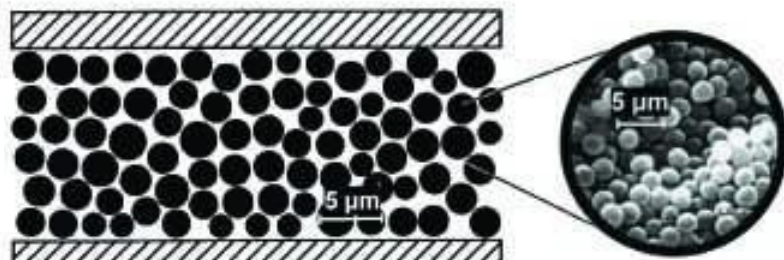


KOLONOVÁ CHROMATOGRAFIE

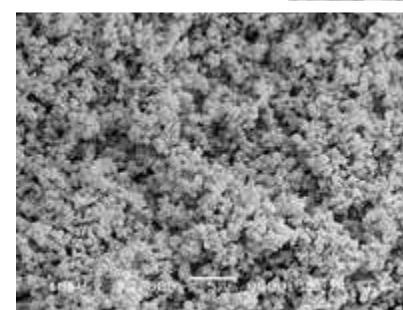
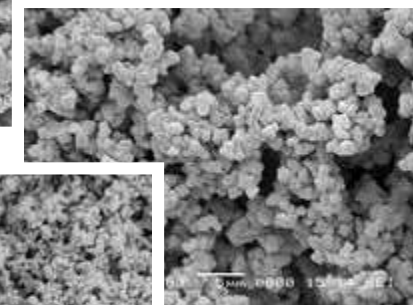
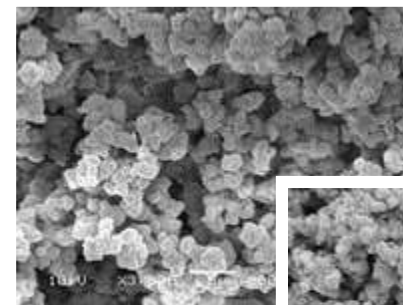
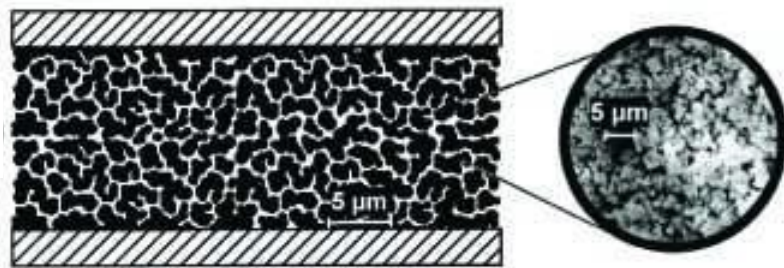


MONOLITICKÉ STACIONÁRNÍ FÁZE

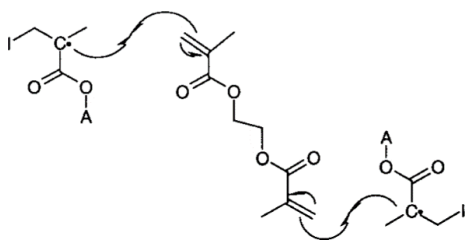
částice



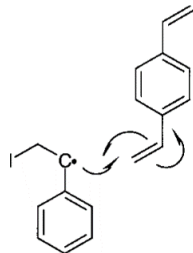
monolit



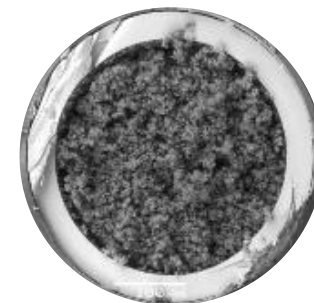
Polymetakryláty



Styren-divinylbenzeny

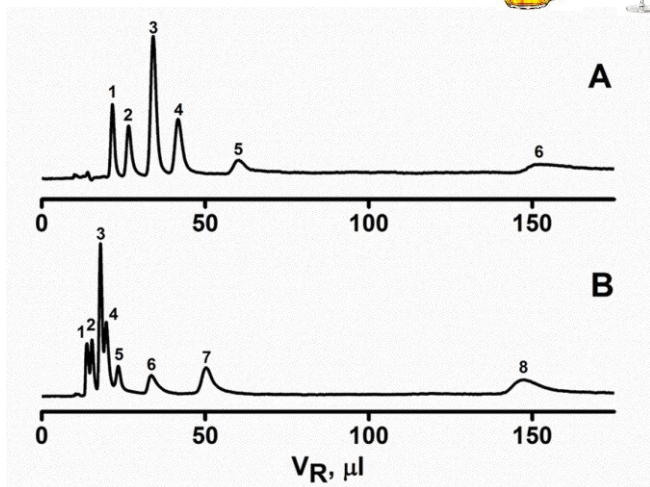


UV, T
→
→
→

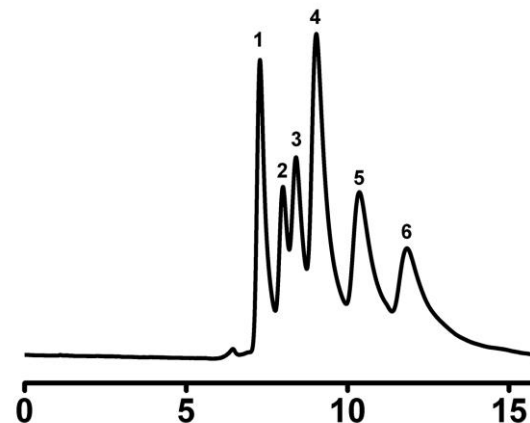


K ČEMU JE TO DOBRÉ?

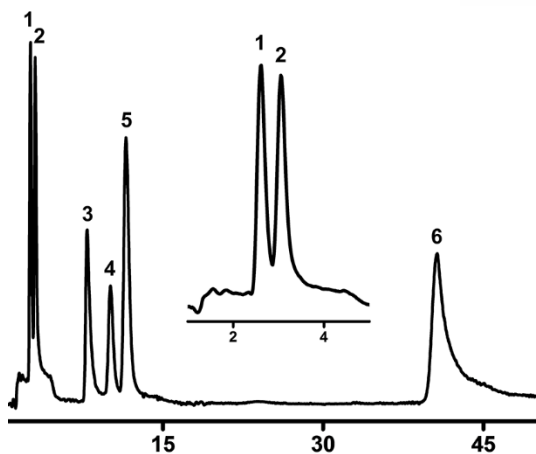
Fenolické kyseliny



Barbituráty



Neurotransmitery

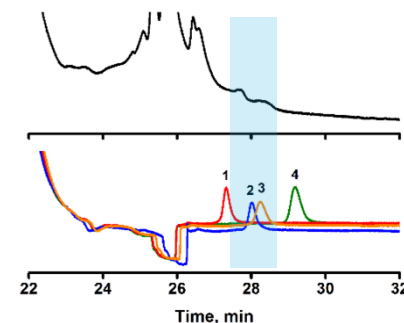
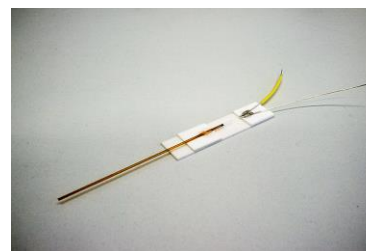


Integrované kolony

fokusace

separace

detekce

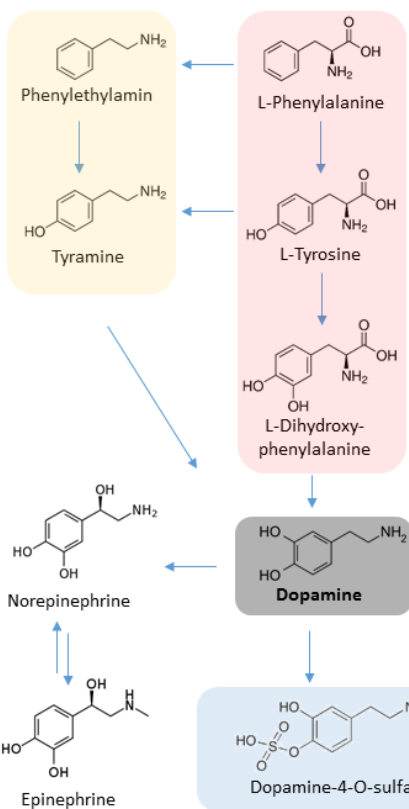


CHROMATOGRAFICKÝ SCREENING

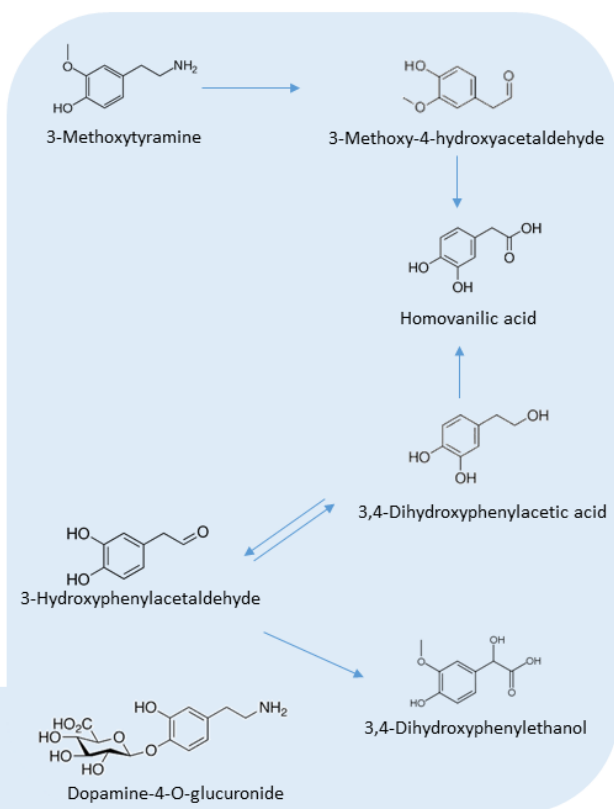


2017 – 2019 Grantová agentura České republiky, projekt 17-11252S
„Polymerní monolitické stacionární fáze s kontrolovanou selektivitou“

Syntéza dopaminu



Biodegradace dopaminu



Snaha připravit
monolitickou kapilární
kolonu pro separaci
prekurzorů a metabolitů
dopaminu.

Budeme schopni vidět
rozdíl mezi zdravým
a nemocným
člověkem?

JIŘÍ URBAN

Kancelář: bud. A14/334

Kamenice 753/5

625 00 Brno

Telefon: 549 49 **8579**

E-mail: urban@chemi.muni.cz

