

CCD

ELEKTRONIKA (2A) – MICHAL ŠTIPL

Co že to je?

Elektronická součástka

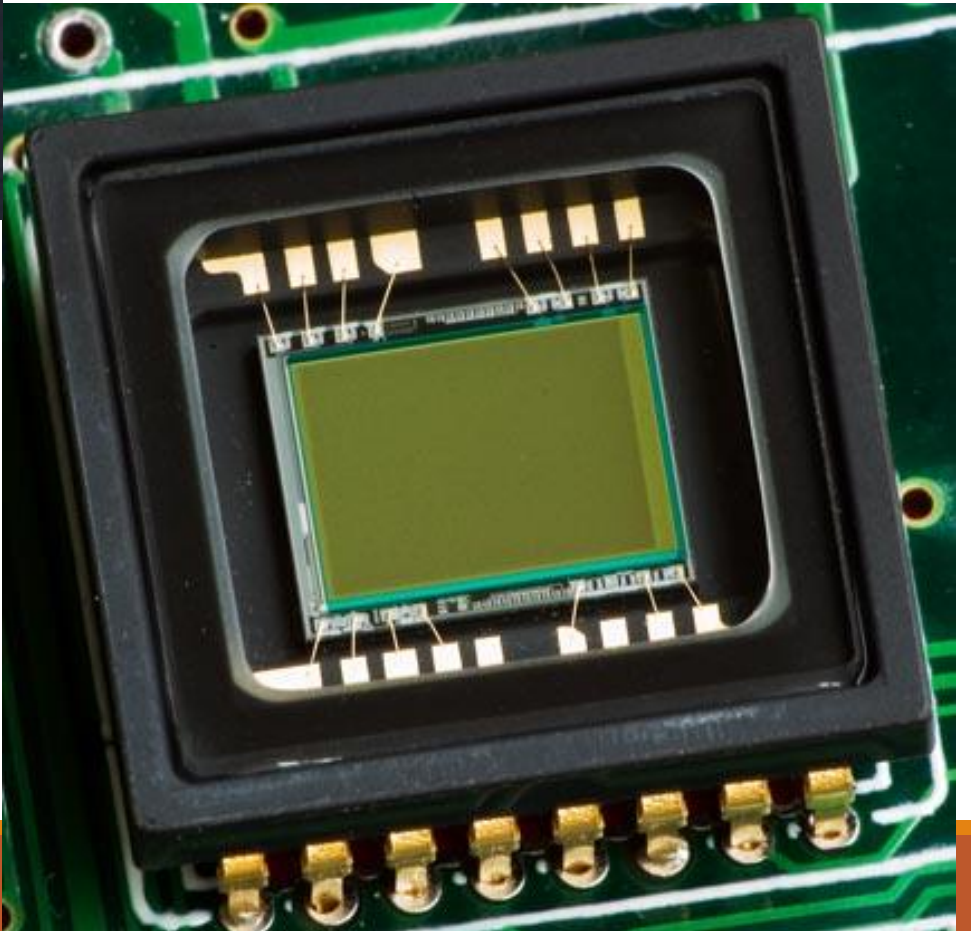
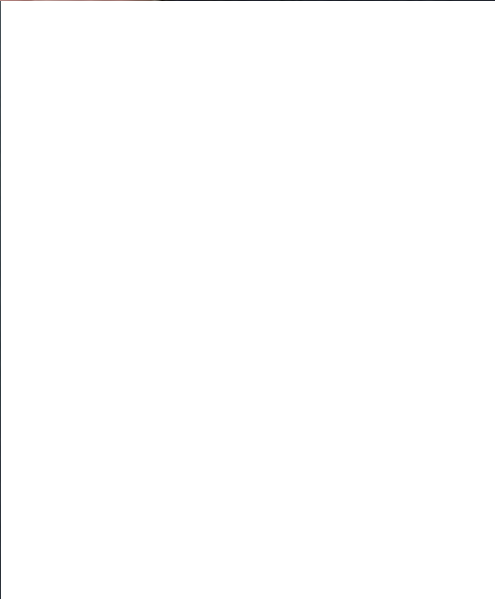
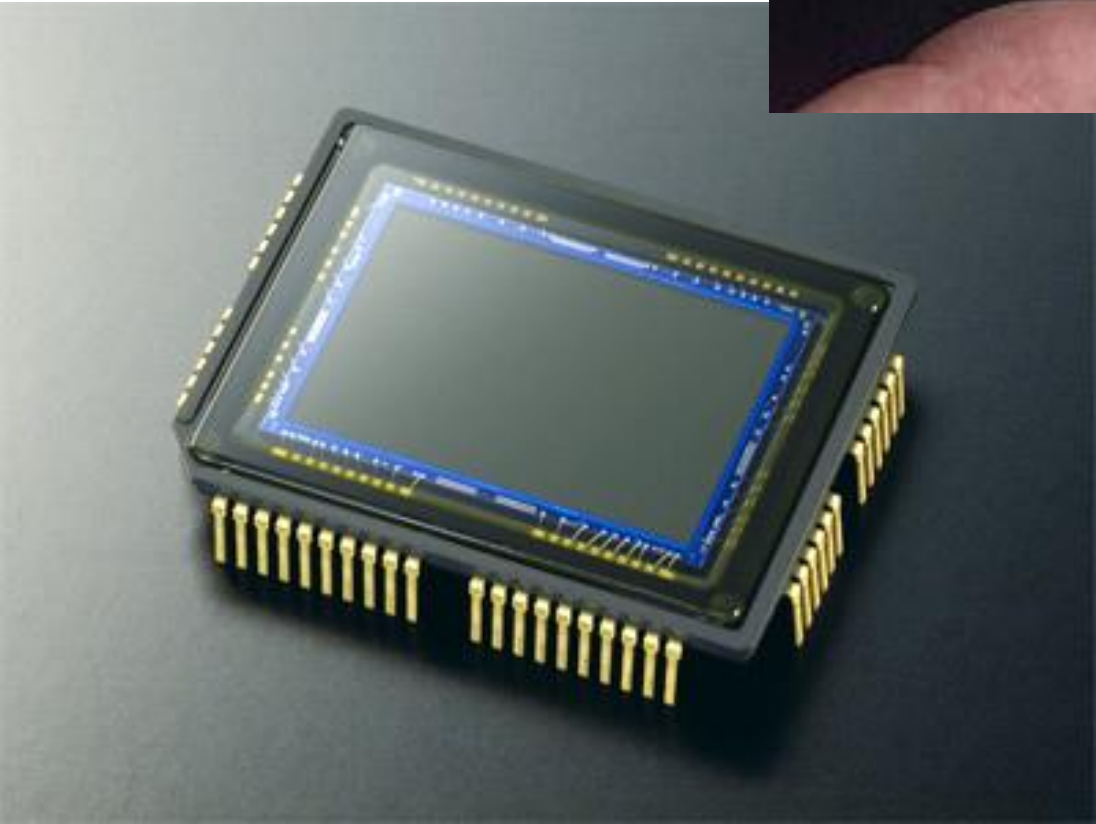
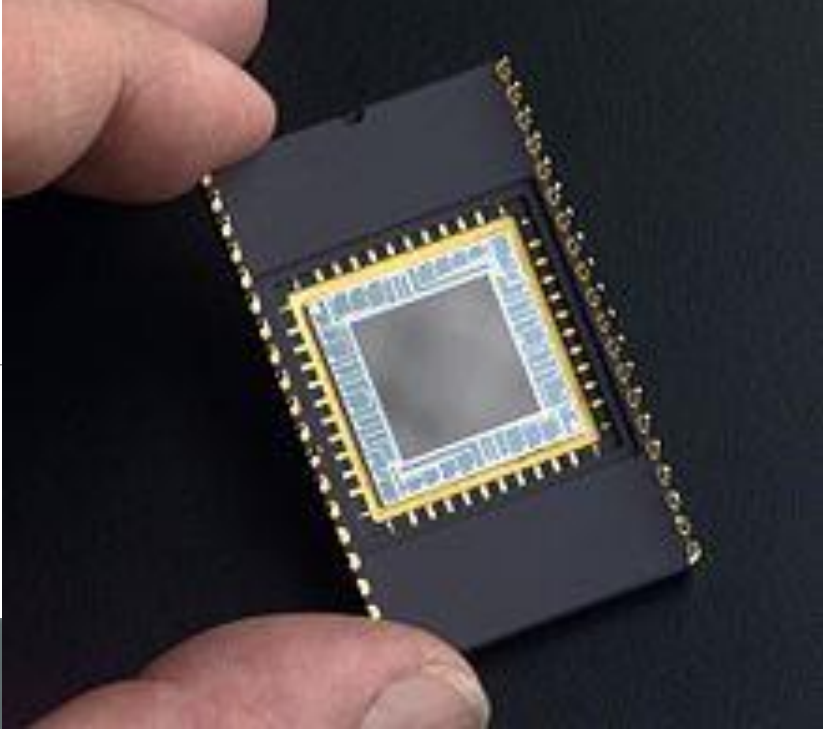
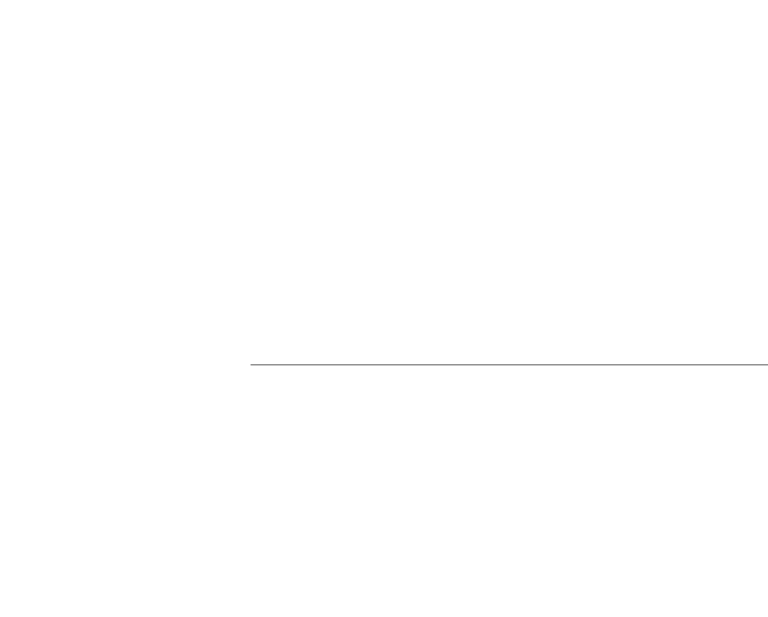
Charge-coupled device

Křemík + křemen (SiO_2)

Polovodič

Fotoelektrický jev

Detektor obrazu



K čemu to je?

Fotoaparáty, kamery

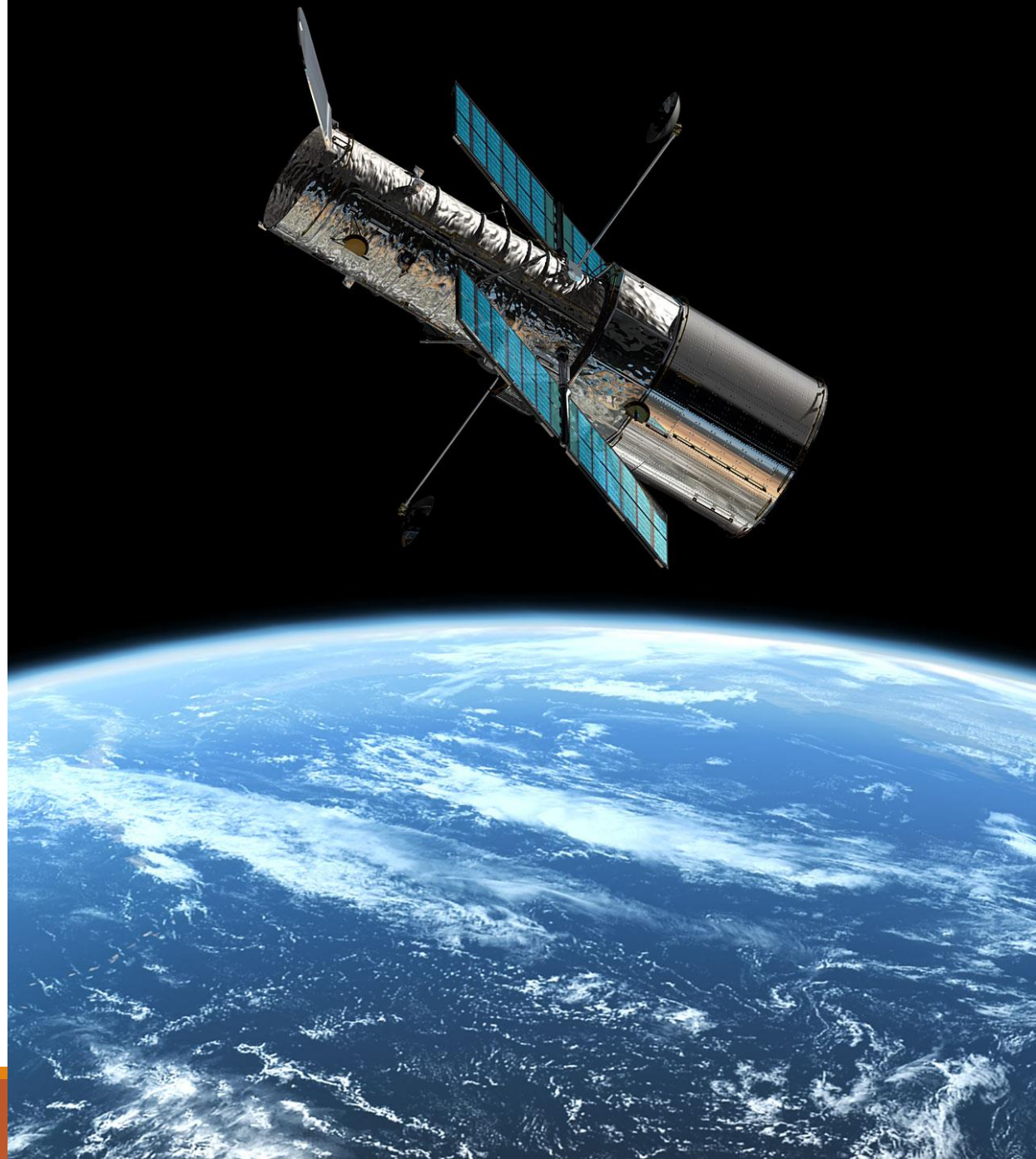
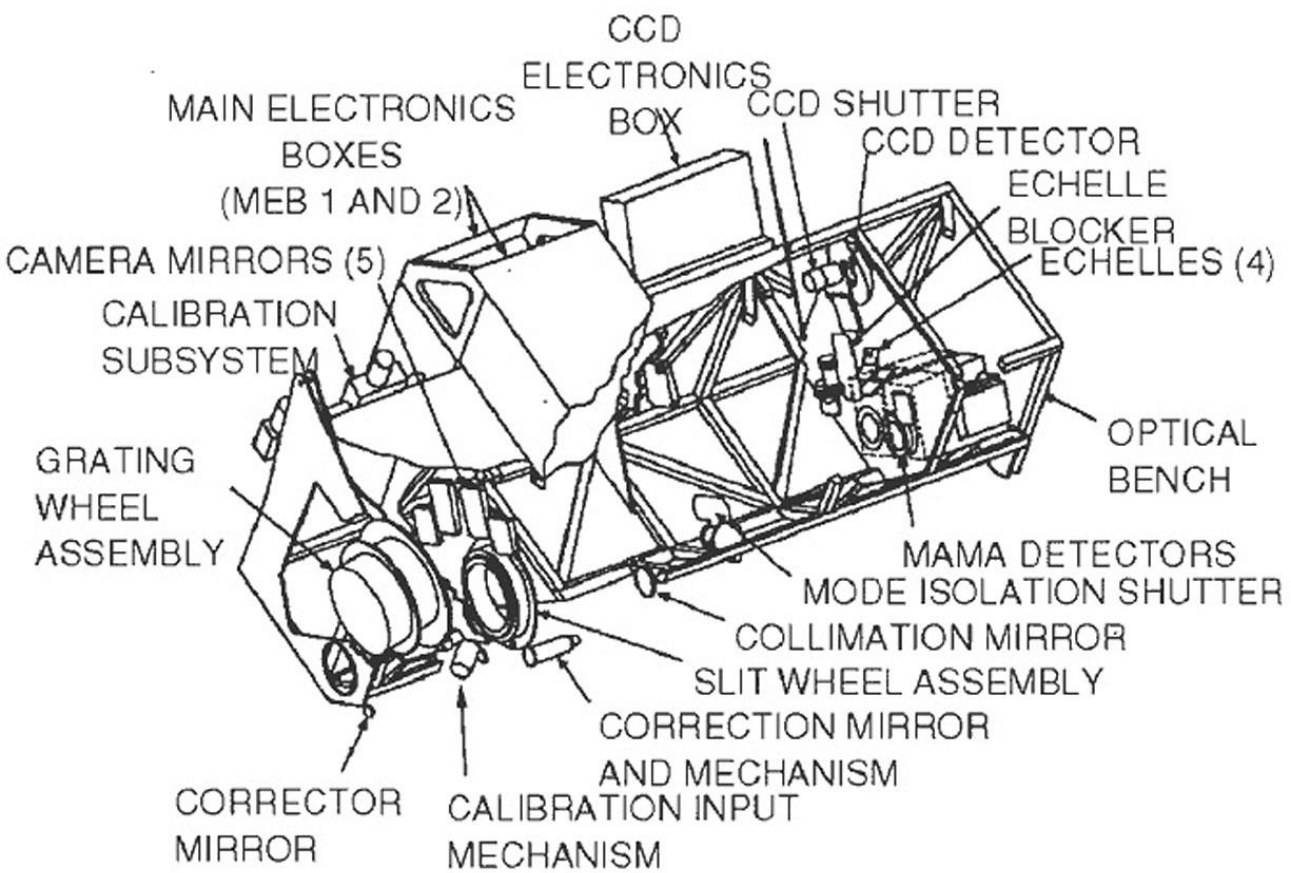
Hvězdářské dalekohledy (STIS)

Hubbleův teleskop

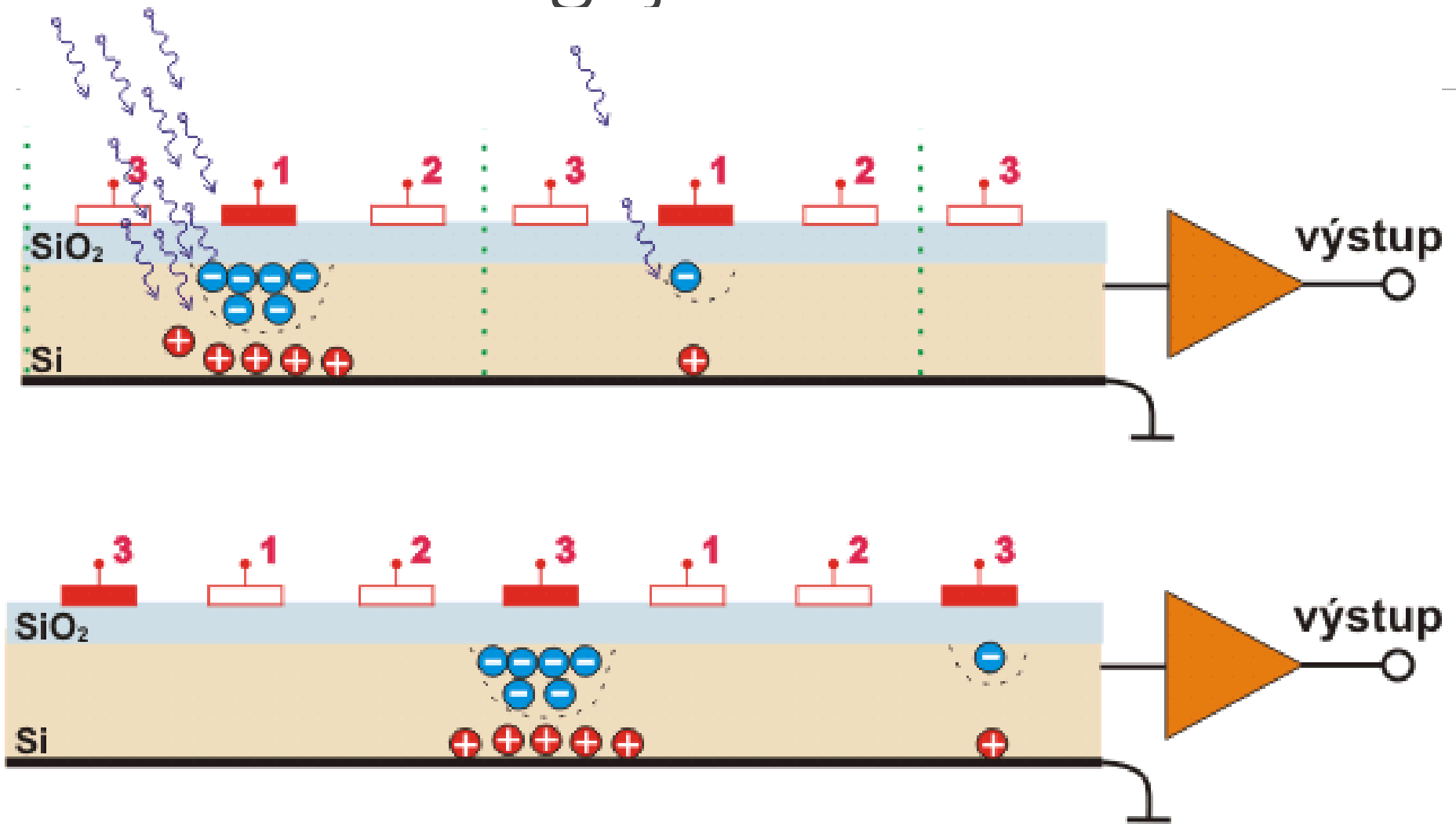
Spektrometry

Různé senzory

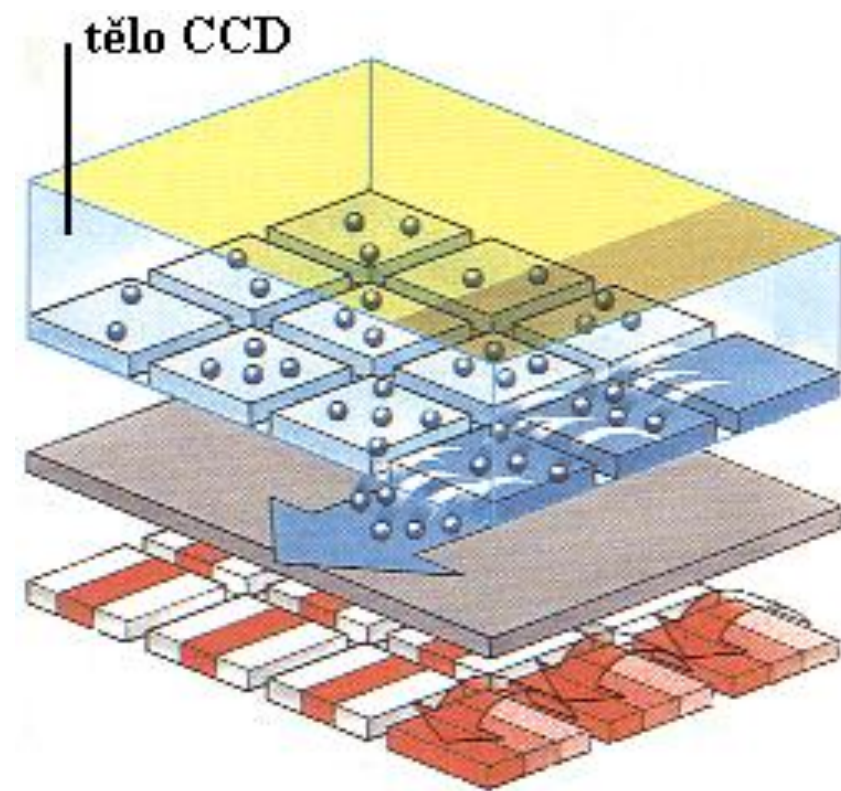
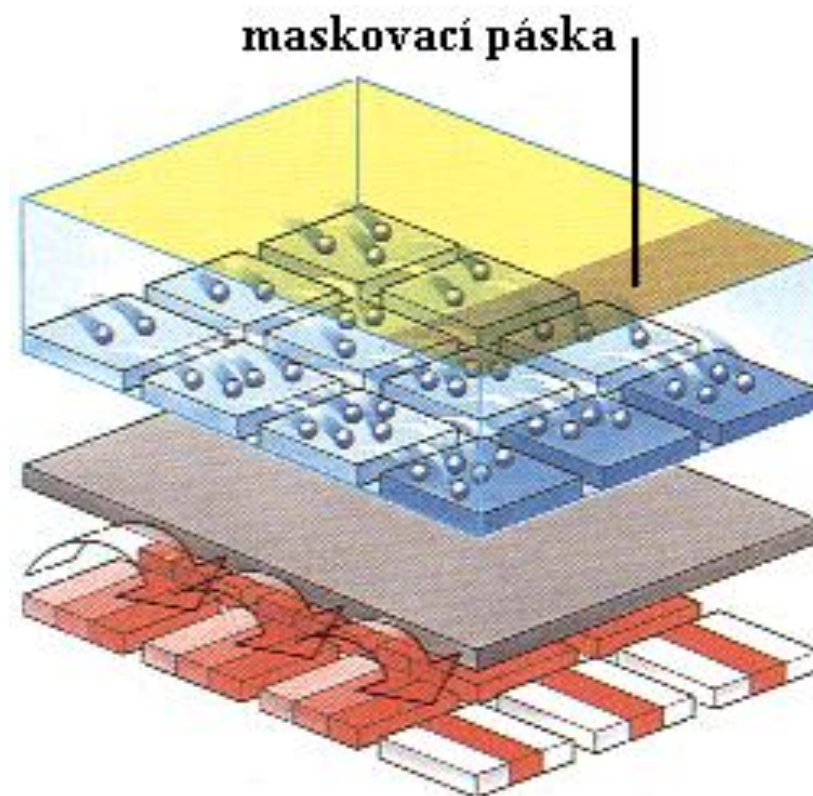
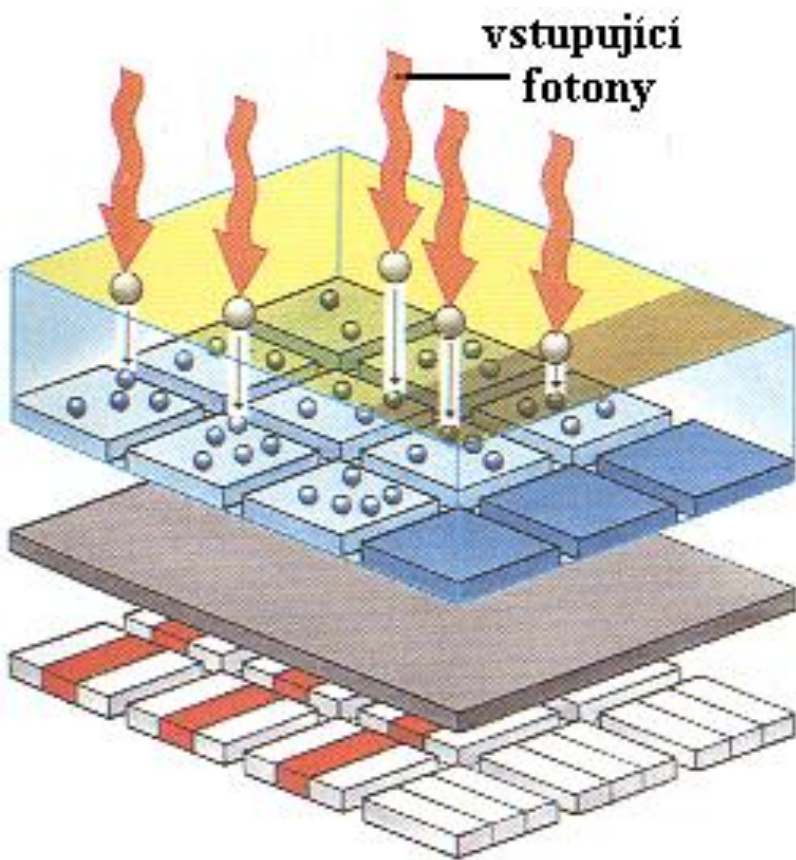
Neurotoxicita



Jak to teda funguje?



Jak to teda funguje?



Kde jsem to vzal?

https://cs.wikipedia.org/wiki/Charge-coupled_device

<http://fyzika.jreichl.com/main.article/view/748-ccd-zakladni-princip>

http://www.fch.vut.cz/~zmeskal/obring/presentace_2002/07_ccd_senzory.pdf

http://www.wikiskripta.eu/index.php/Princip_CCD_kamery