

# Nádory prostaty

Tomáš Kazda

tomas.kazda@mou.cz

Klinika radiační onkologie  
MOÚ

- epidemiologie – jak časté (incidence, prevalence, mortalita)
- etiologie – příčiny vzniku (faktory vnitřní, zevní)
- symptomatologie
- diagnostika
- klasifikace (TNM), histologie
- léčba – kurativní, adjuvantní, paliativní, neoadjuvantní
  - operace, radioterapie, chemoterapie, hormonoterapie, cílená léčba, imunoterapie, podpůrná léčba

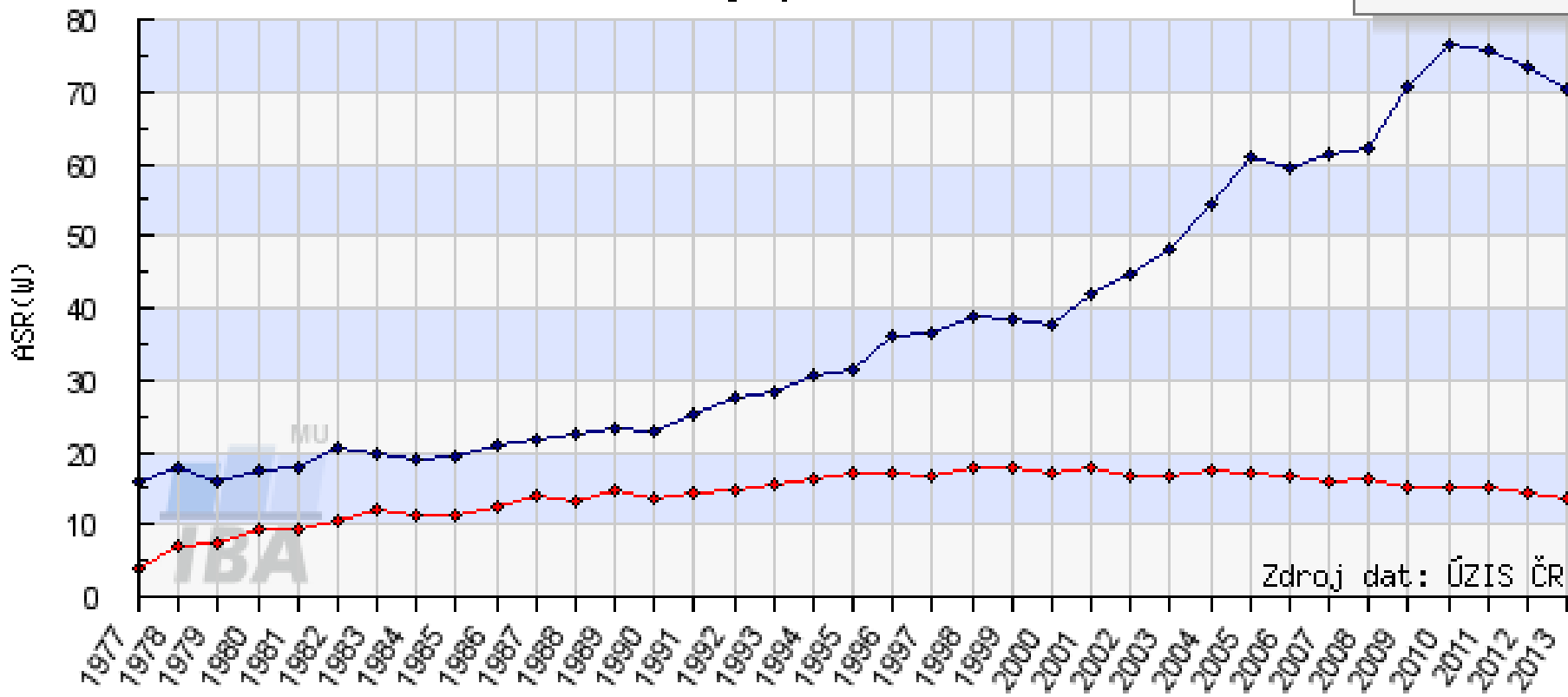
# Nádory prostaty

- nejčastější nádor 130/100,000, rostoucí incidence (PSA), screening? M 25/100,000
- prostatický specifický antigen – PSA
- nutná bioptická verifikace (TRUS), CT pánve, scintigrafie skeletu
- klasifikace dle rizika rekurence – T staging, PSA, Gleason skóre
- léčba lokalizovaného vs. generalizovaného onemocnění
- radikální prostatektomie vs. kurativní radioterapie – nežádoucí účinky
- watchful waiting, active surveillance
- nádory vysoce hormonálně dependentní – hormonoterapie
- orchiektomie – kastrace, antiandrogeny, LHRH agonisté
- progresse – kastračně rezistentní karcinom prostaty
- MTS – kosti
- nové léky – hormonoterapie nové generace, imunoterapie – vakcíny, alfa zářič Radium

# C61 - ZN předstojné žlázy - prostaty, muži

Vývoj v čase

- ◆ Incidence
- ◆ Mortalita



Zdroj dat: ÚZIS ČR

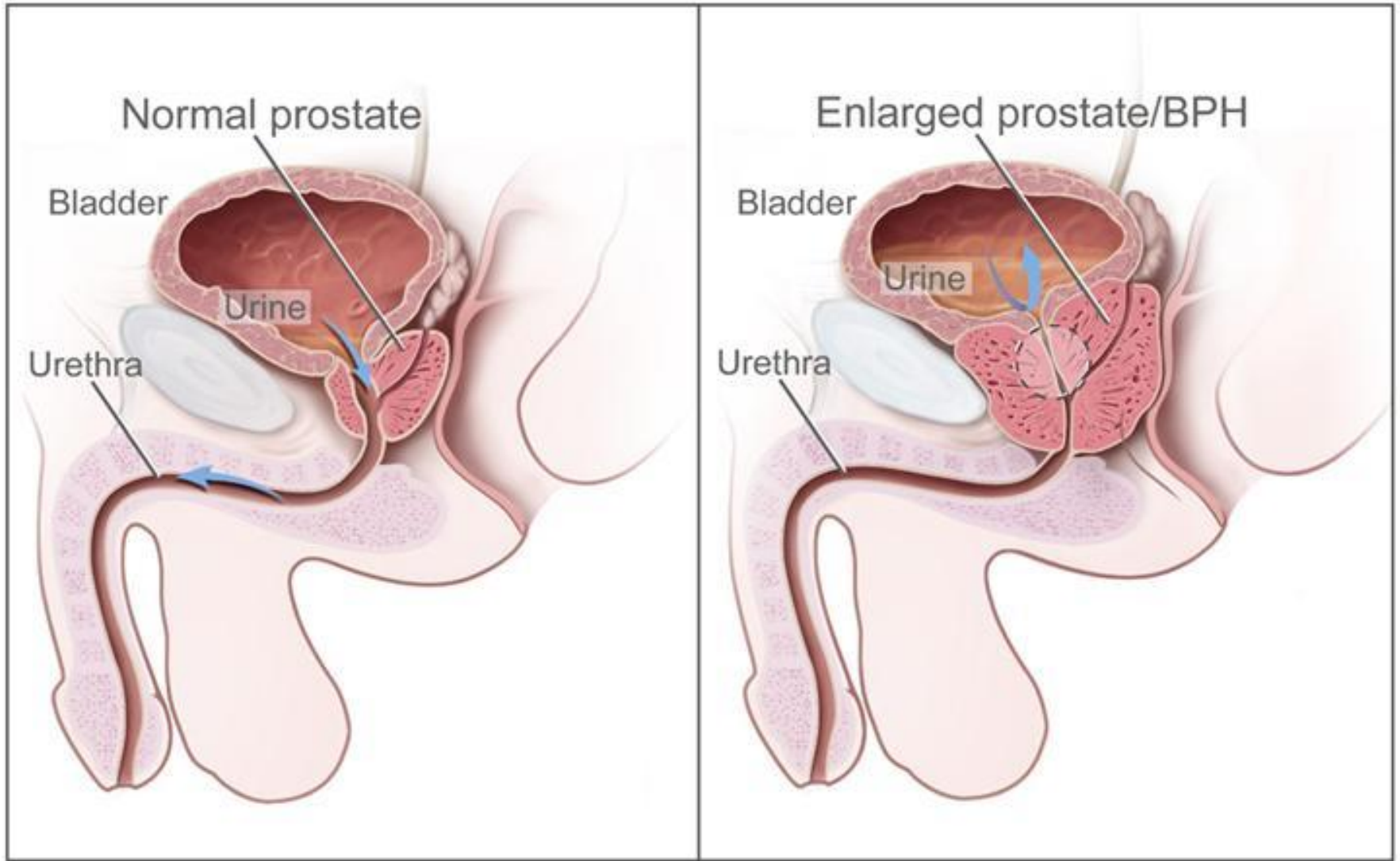
Analyzovaná data: N(inc)=113391, N(mor)=42291

<http://www.sv.od.cz>

# Prostate Cancer Screening

## Mata-analysis of 6 trials ( n = 387,286)

- Odds of diagnosing prostate cancer = increased by 46%
- Odds of being in stage I = increased by 95%
- Impact on prostate cancer mortality = none
- Impact on overall survival = none



PROSTATE PROBLEMS ARE NO...

**F**requency

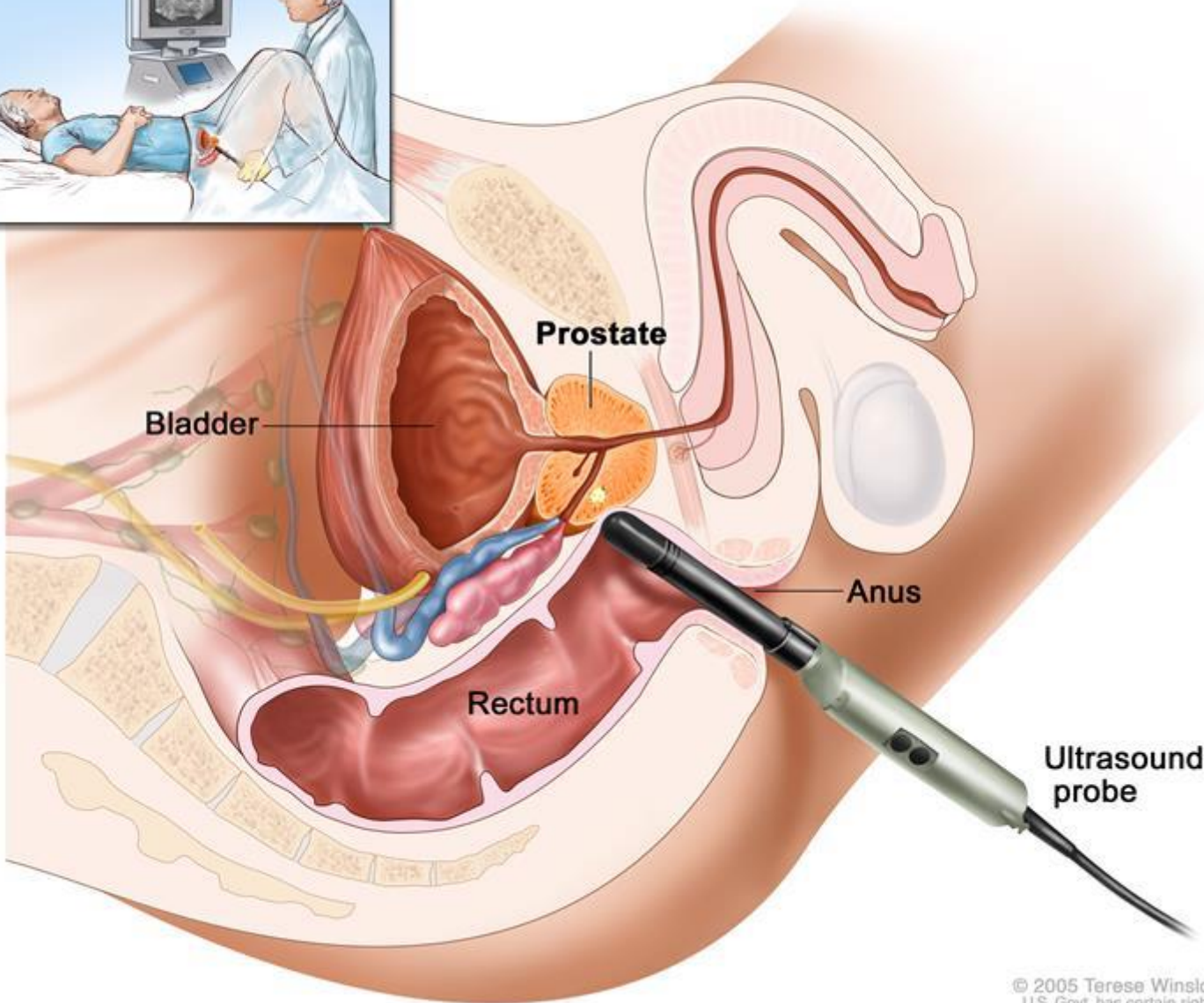
**U**rgency

**N**octuria

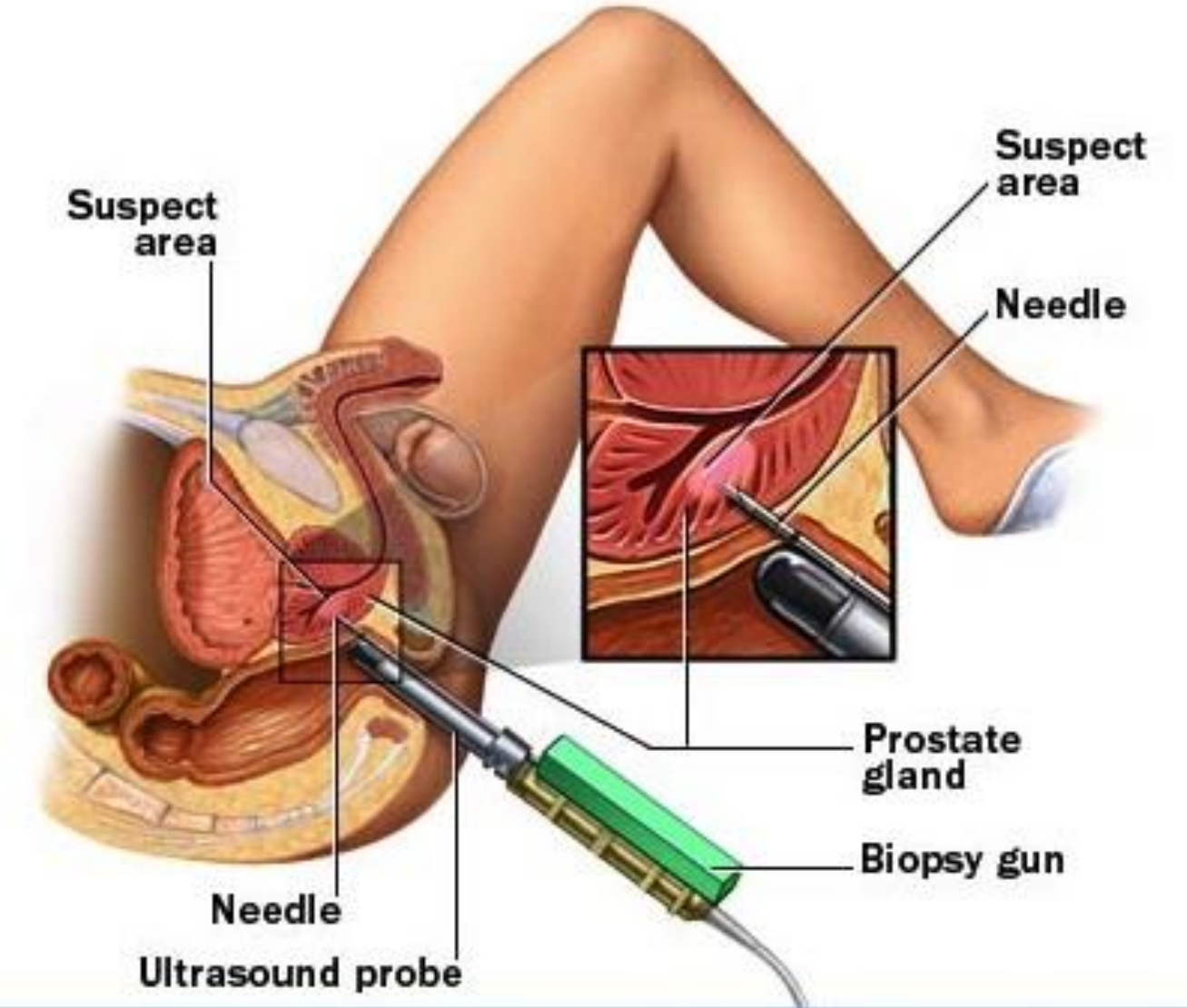
- Hematuria
- ↑ Infections
- ↓ Urinary Stream
- ↑ Residual Urine

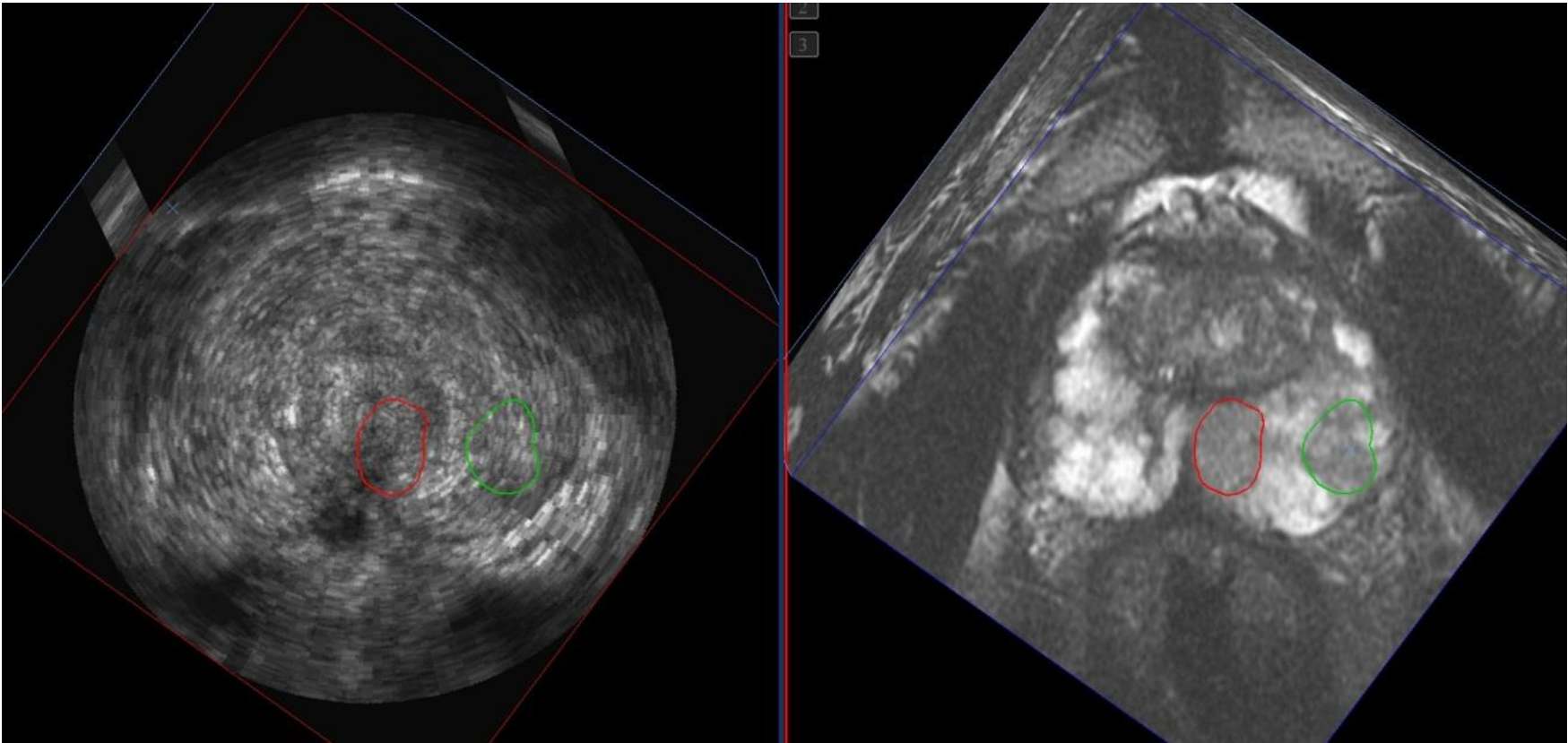


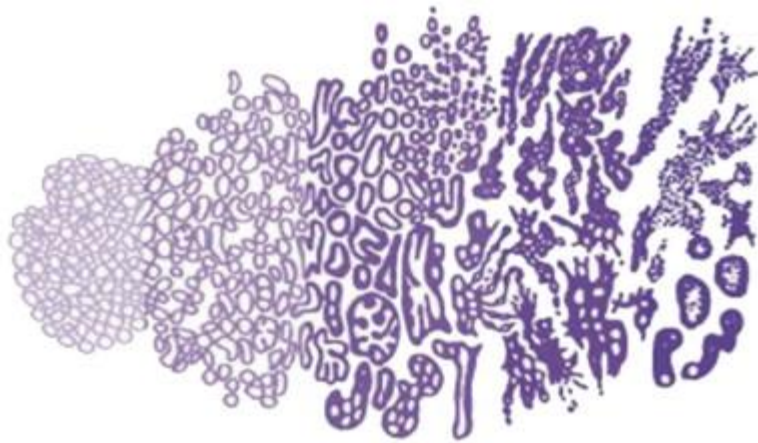
# Transrectal Ultrasound



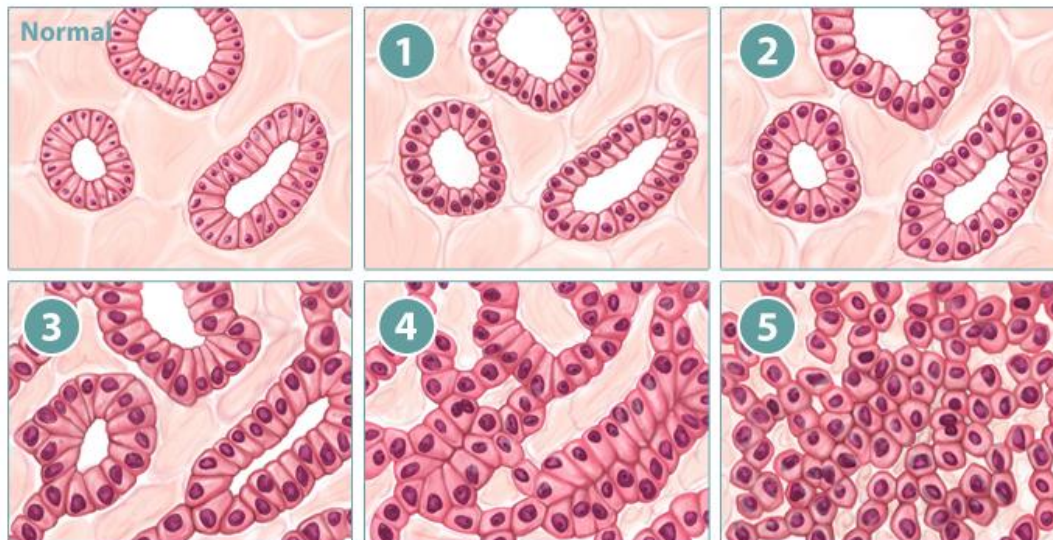
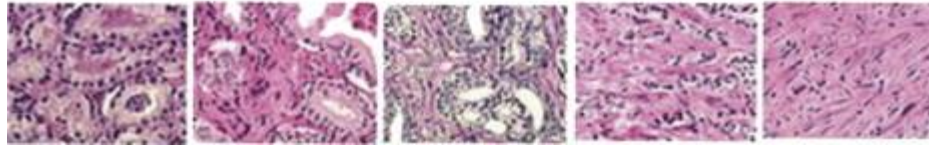


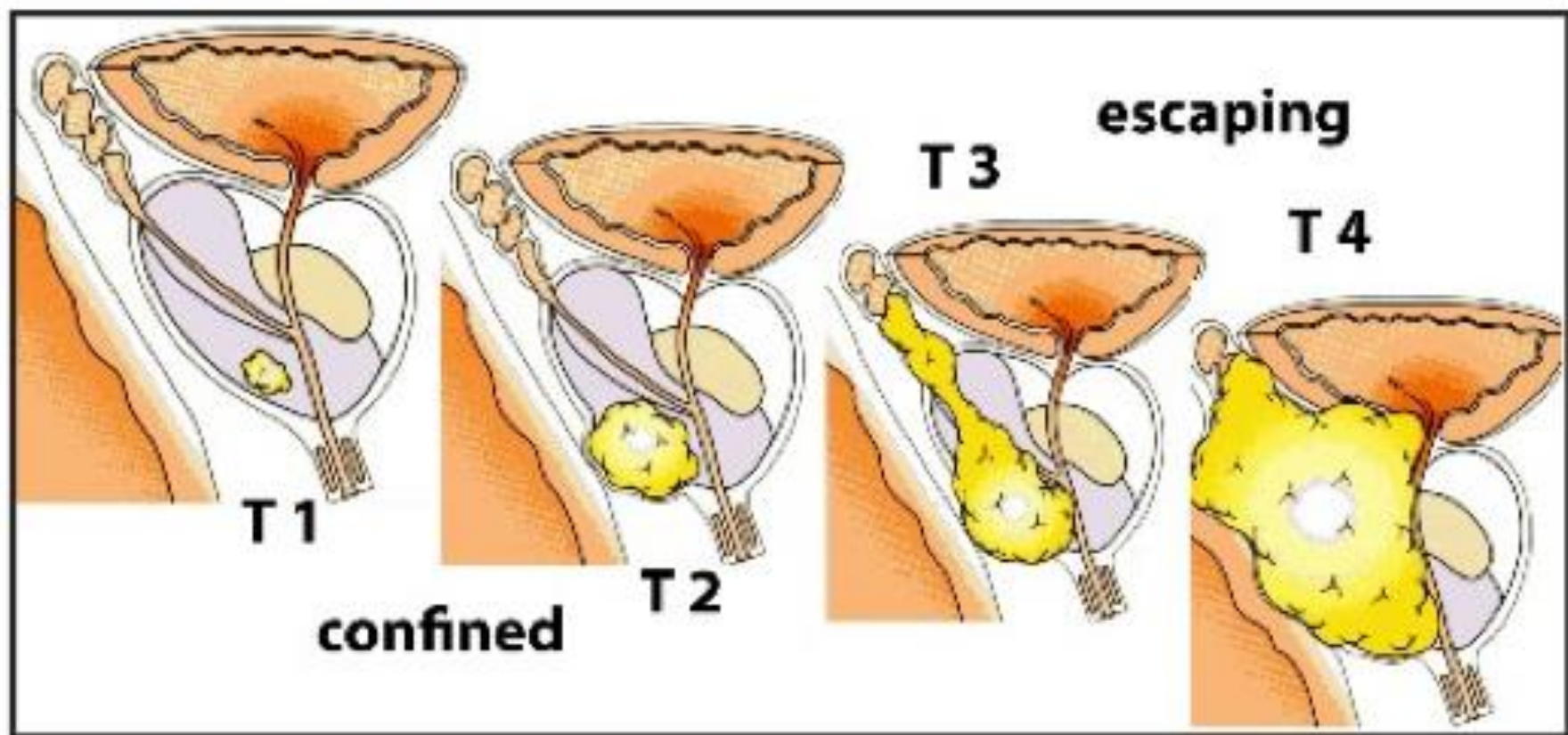






1 2 3 4 5



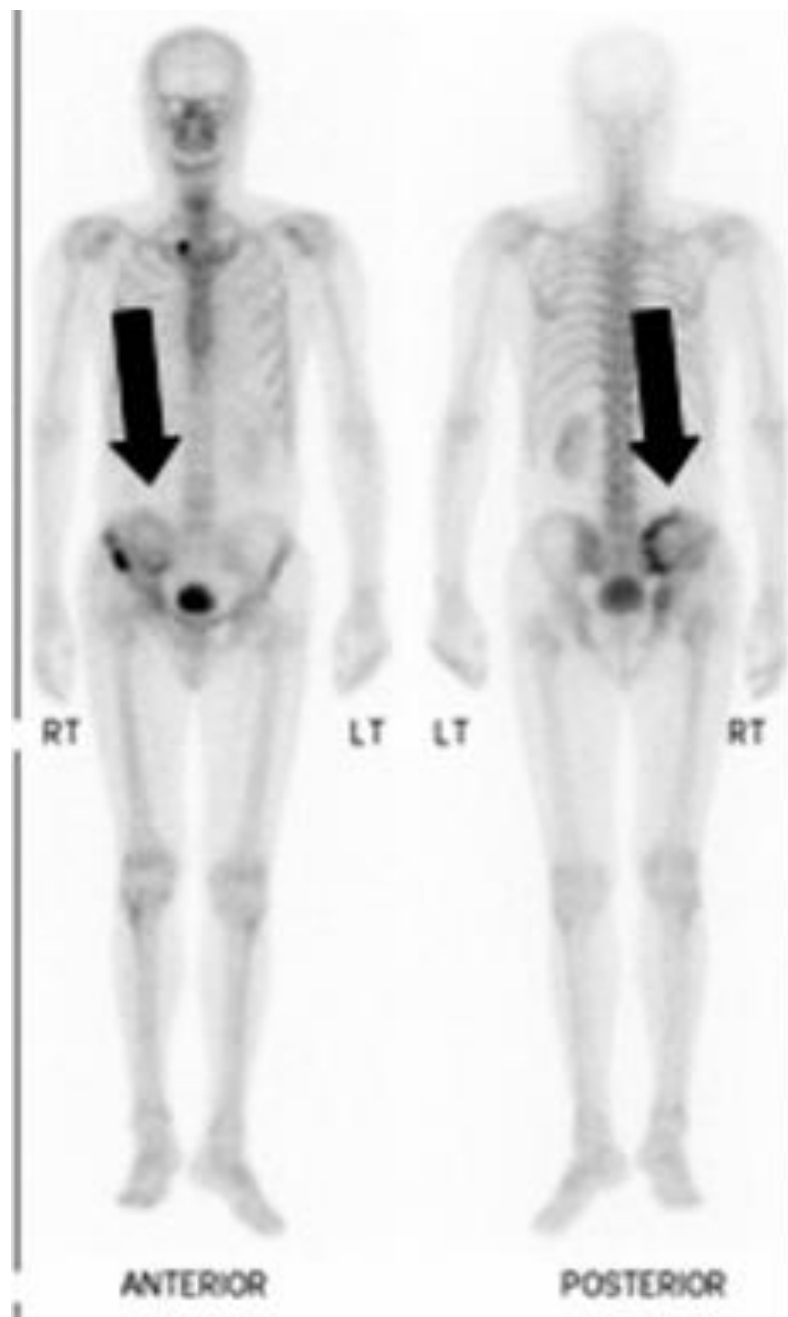


prostate cancer

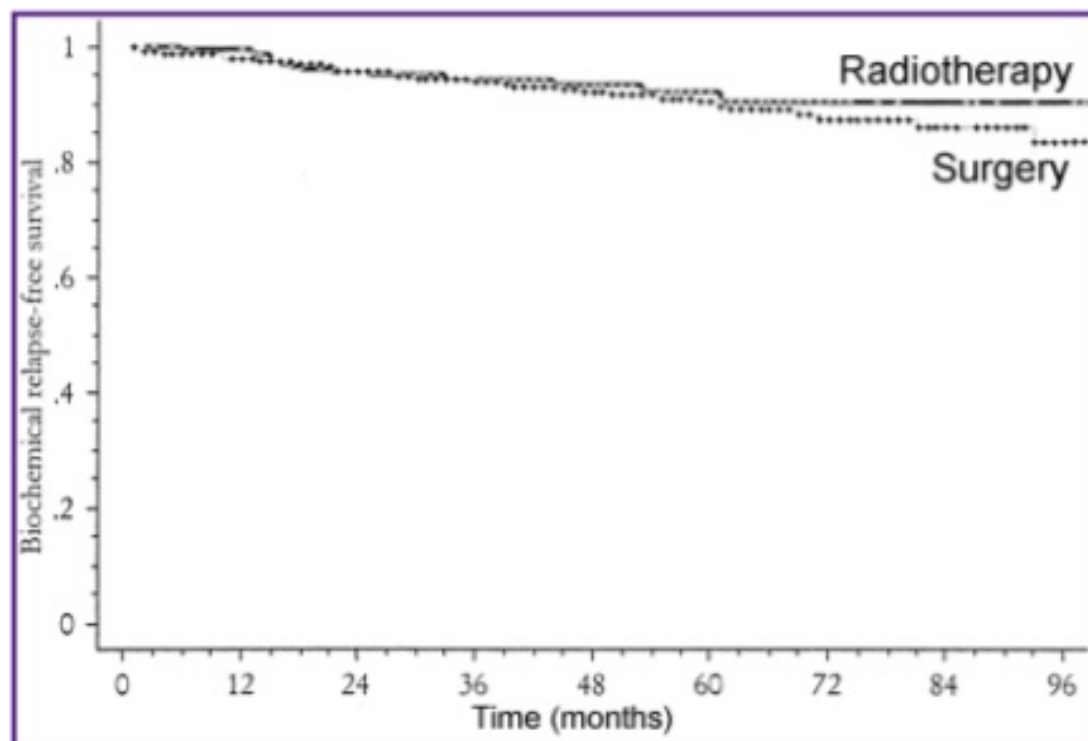
bladder



rectum

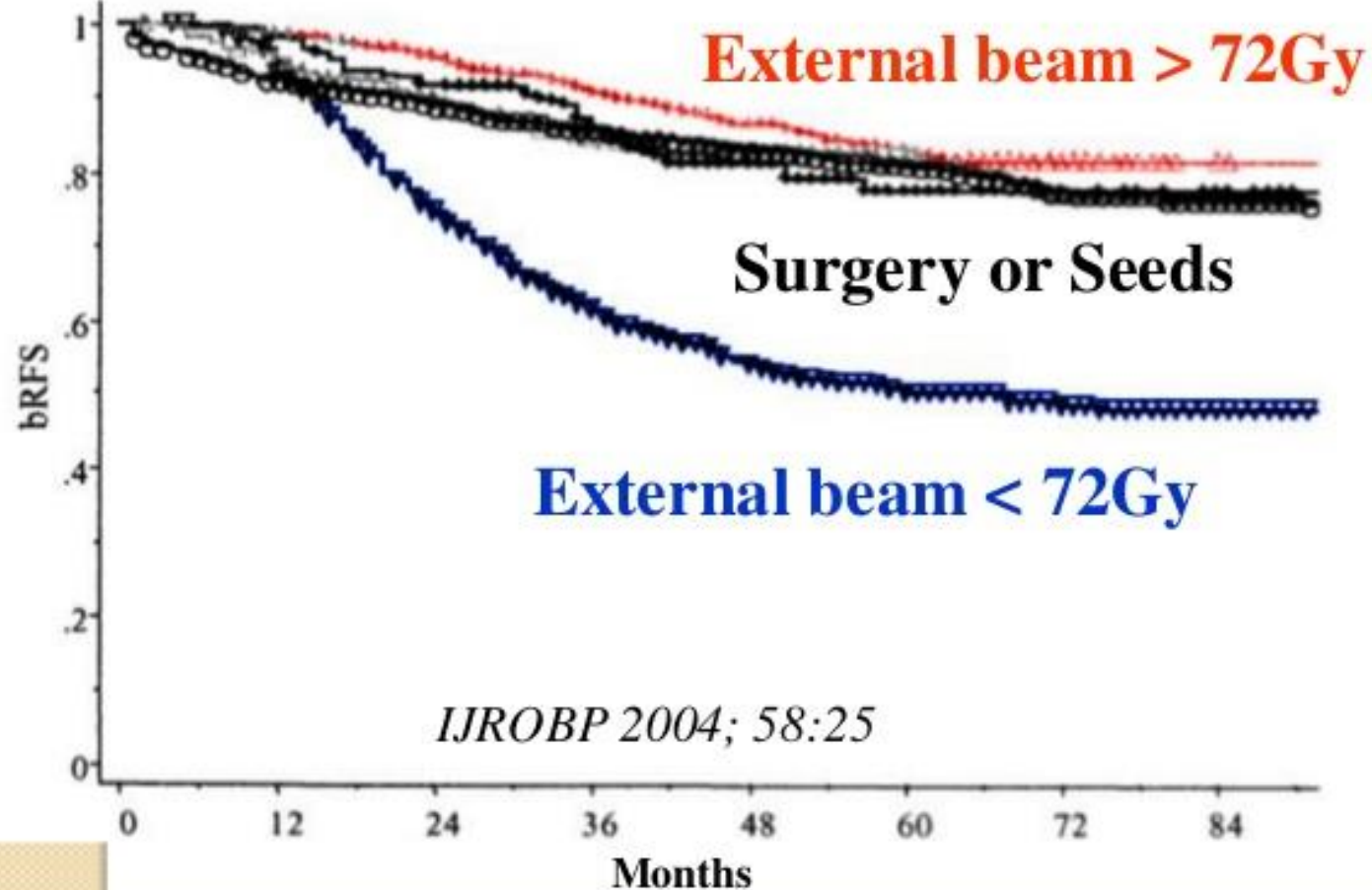


## Cure Rates with Radiation versus Surgery for Early Stage Prostate Cancer are the same



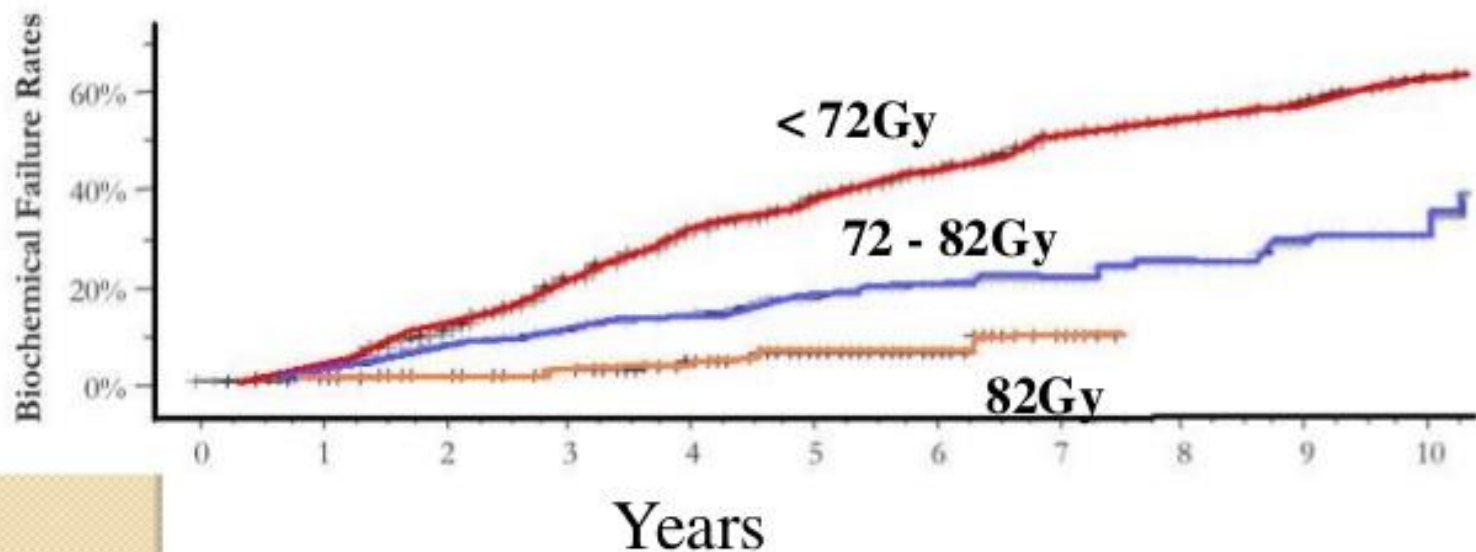
from the Cleveland Clinic.  
*Kupelian. JCO Aug 15 2002: 3376-3385*

## Prostate Cures Rates by Treatment, The Radiation Dose is Critical

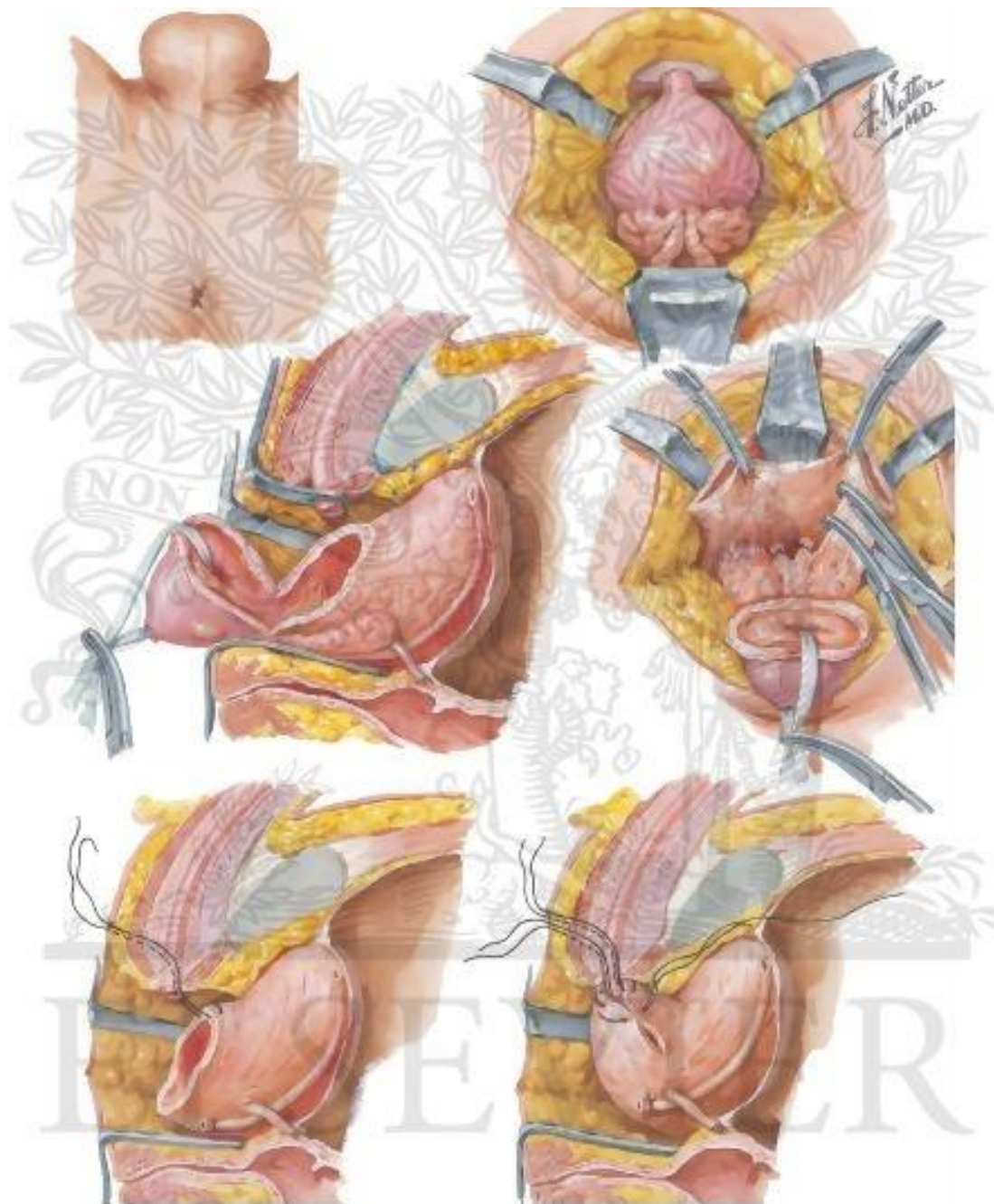


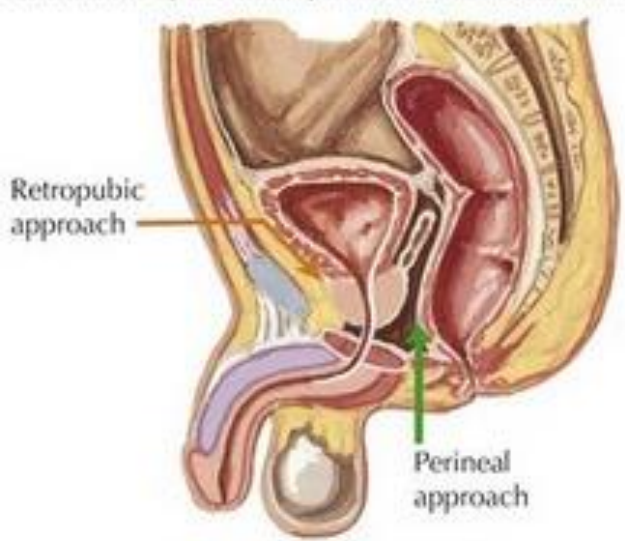


# Prostate Cancer Relapse Rate by Radiation Dose



*Kupelian. IJROBP 2008:71:16*





Either perineal or retropubic approach used to gain access

