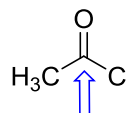
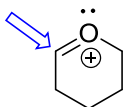
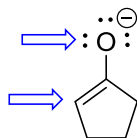
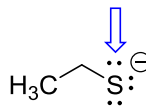
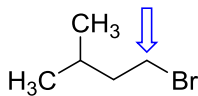
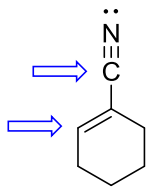
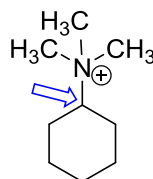
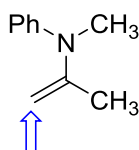
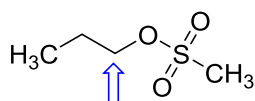
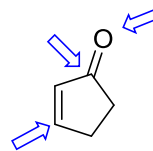
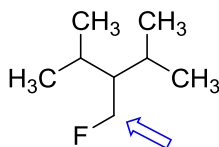
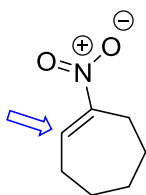


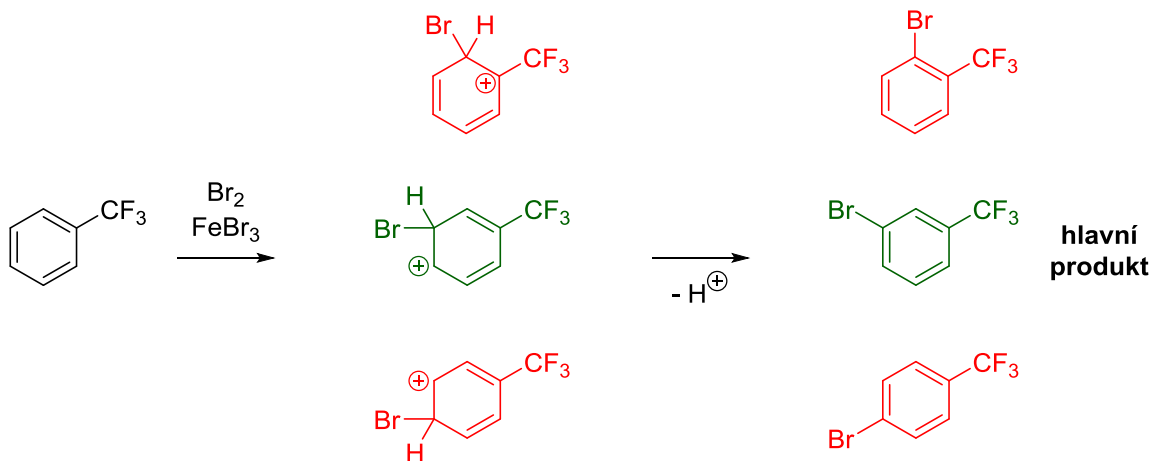
Určete, zda na vyznačených místech bude molekula reagovat s elektrofilem (E) nebo nukleofilem (Nu):



Určete, zda na vyznačených místech bude δ^+ nebo δ^- :



Vysvětlete, proč hlavním produktem bromace trifluormethylbenzenu je produkt s bromem v poloze meta a produkty s bromem v polohách ortho a para nevznikají (nebo jsou pouze minoritní). Reakce probíhá přes kationický meziprodukt:



Ve dvojicích vyberte stabilnější ion a svoji odpověď zdůvodněte:

