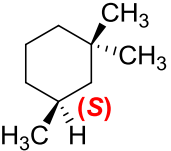
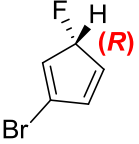
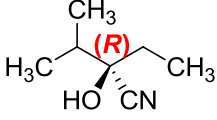
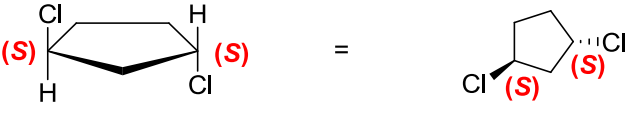
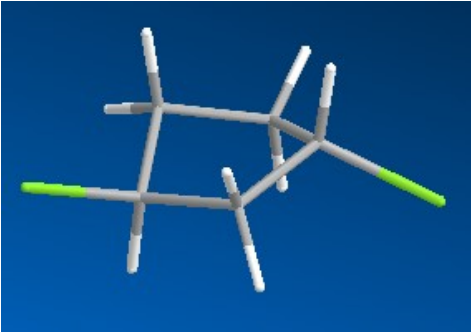
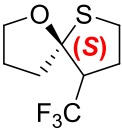
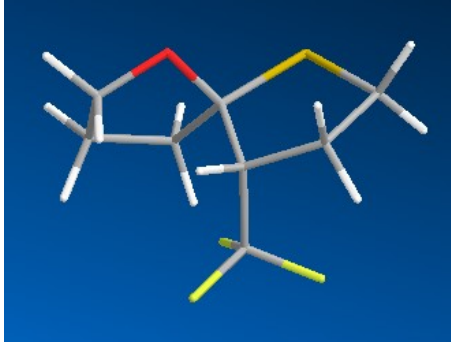
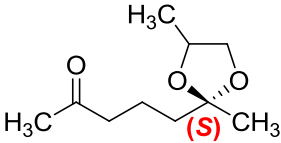
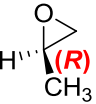
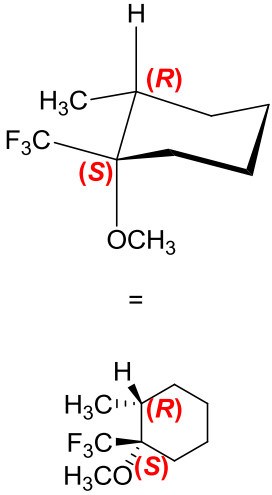
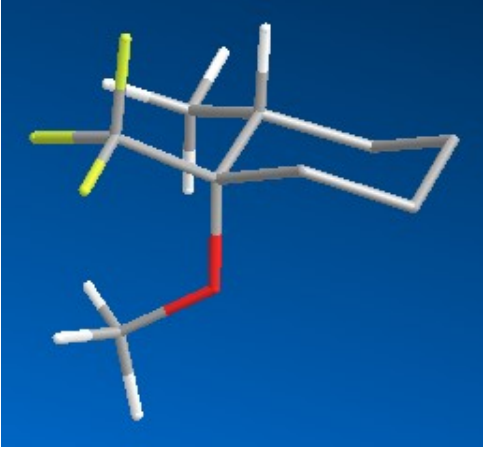
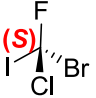
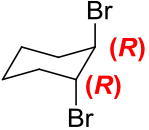
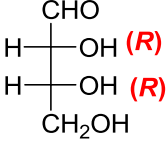




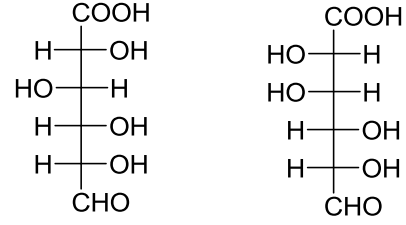
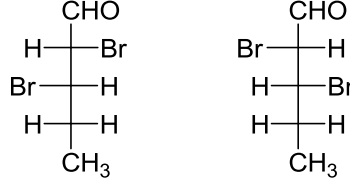
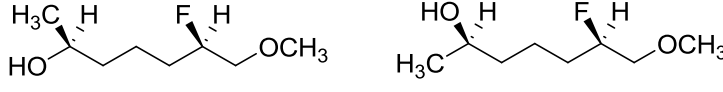

Úkol 5: Odpovězte na otázky a odpovědi zdůvodněte:

- Jsou *meso*-sloučeniny opticky aktivní? **Nejsou, nejsou chirální, nejsou tvořeny neztotožnitelnými zrcadlovými obrazy.**
- Je racemát opticky aktivní? **Není, obsahuje stejný podíl obou enantiomerů. Ty oba stáčí rovinu lineárně polarizovaného světla o stejný úhel, ale na opačnou stranu. Výsledně tedy racemát nemá optickou aktivitu.**

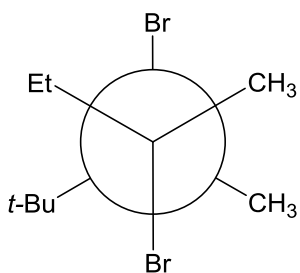
Úkol 6: Kde je to možné, určete absolutní konfiguraci:

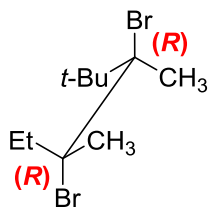
Úkol 7: V jakém vztahu jsou následující dvojice?

 <p>E a Z izomery; diastereomery</p>	 <p>enantiomery</p>
 <p>diastereomery</p>	 <p>enantiomery</p>
 <p>diastereomery</p>	 <p>konstituční izomery</p>

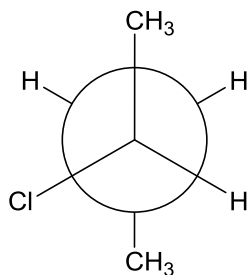
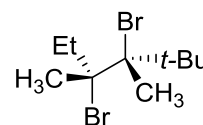
Úkol 8: Kde je to možné, určete absolutní konfiguraci:



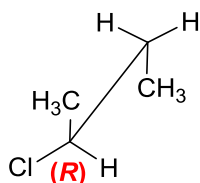
Newmanova projekce



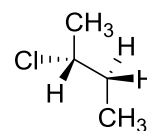
perspektivní vzorec



Newmanova projekce



perspektivní vzorec



Úkol 9: Určete konfiguraci uvedených (hypotetických) molekul:

