

Základy entomologie

3. cvičení:

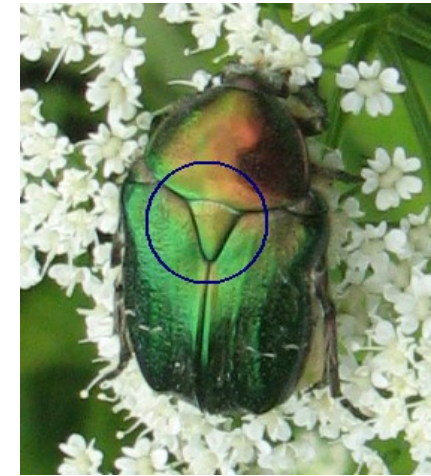
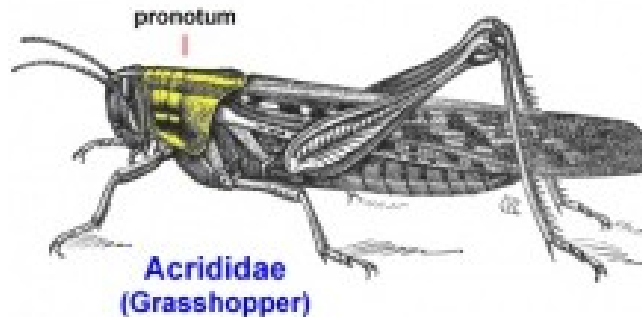
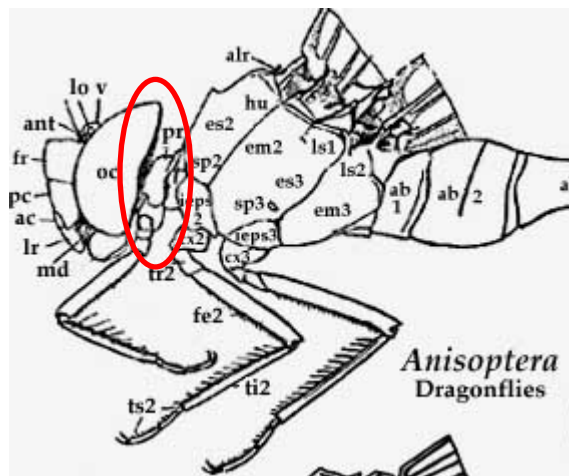
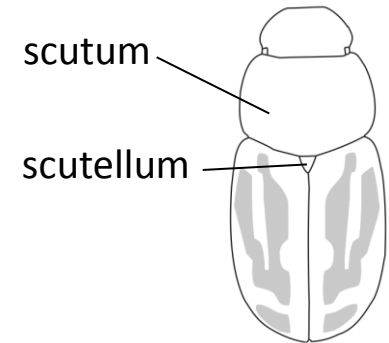
Hrud'

Končetiny

Hrud' (Thorax)

prothorax
mesothorax } u Pterygot allae
metathorax }

- rozsáhlá sklerotizace – rozpad na sklerity: tergity, sternity, pleurity
- homonomní segmentace – např. Plecoptera, Megaloptera, Mecoptera, Thysanoptera
- heteronomní segmentace:
 - **prothorax** – redukován (alátní druhy - Odonata), zesílený (Coleoptera, Orthoptera) prodloužený u Mantodea, Raphidioptera
 - **mesothorax** – dobře vyvinutý u Diptera, Hymenoptera, redukce u Coleoptera, Dermaptera, Blattodea
 - **metathorax** – dobře vyvinutý u Orthoptera, Strepsiptera



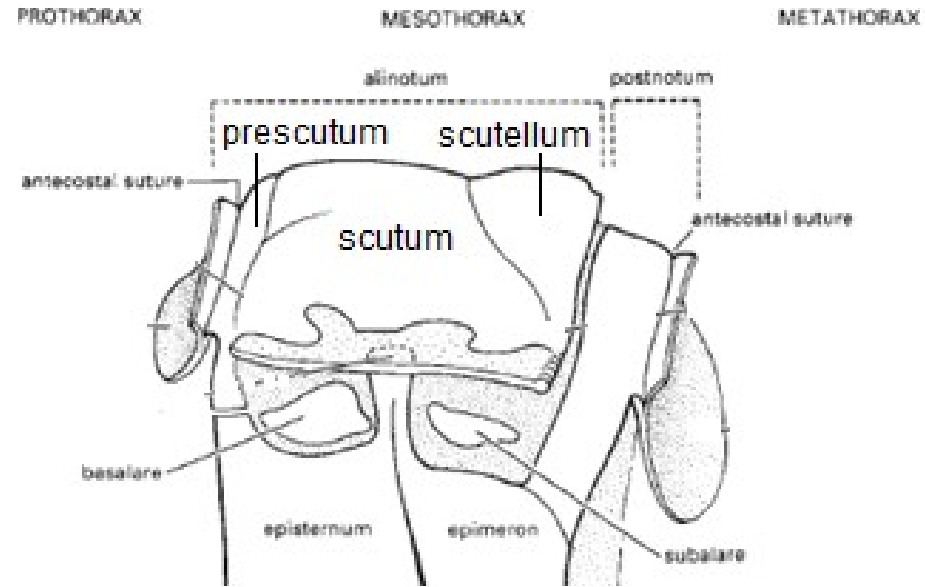
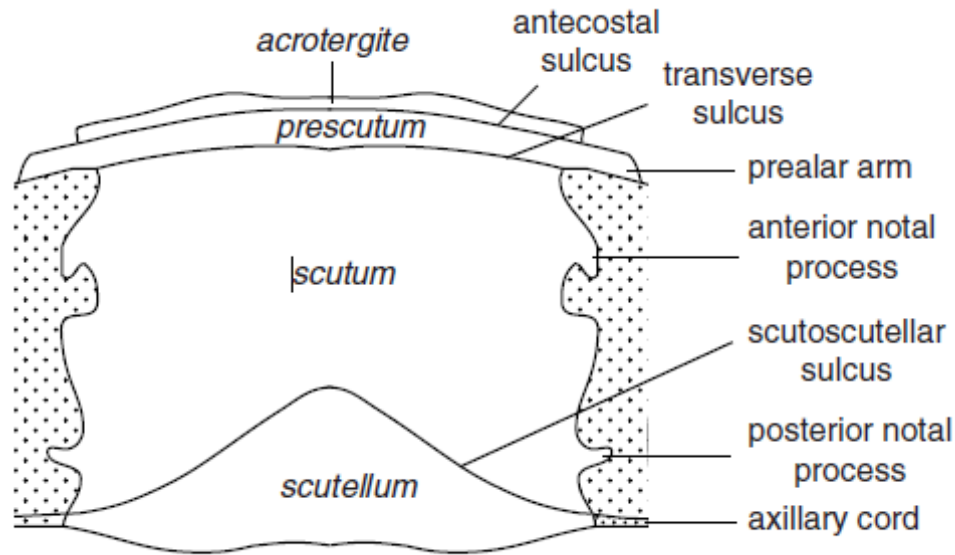
Hrud' (Thorax)

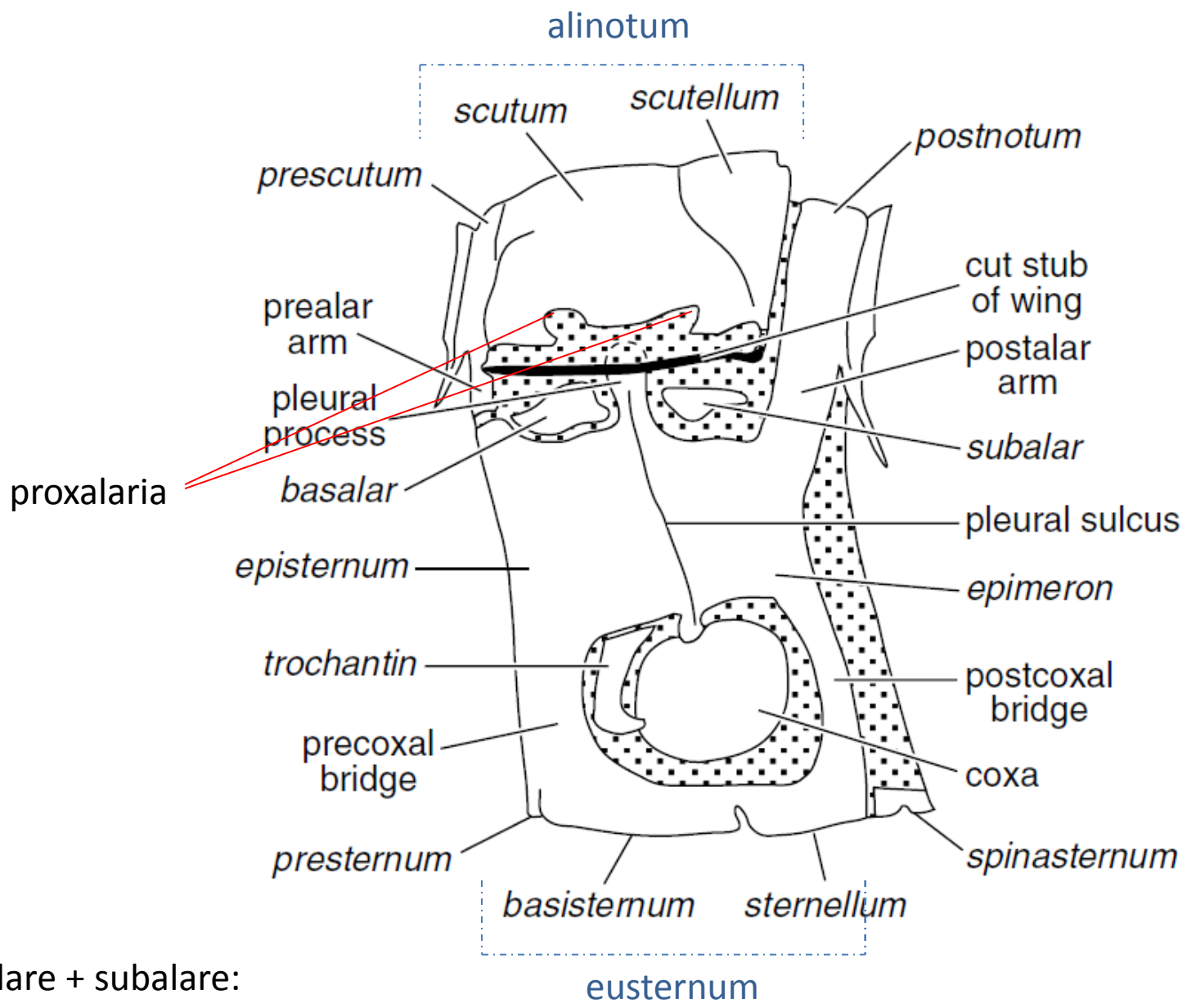
- **notum** = dorzální část terga

prescutum
scutum
scutellum

} sutura mesoprescutellaris

} sutura scutoscutellaris

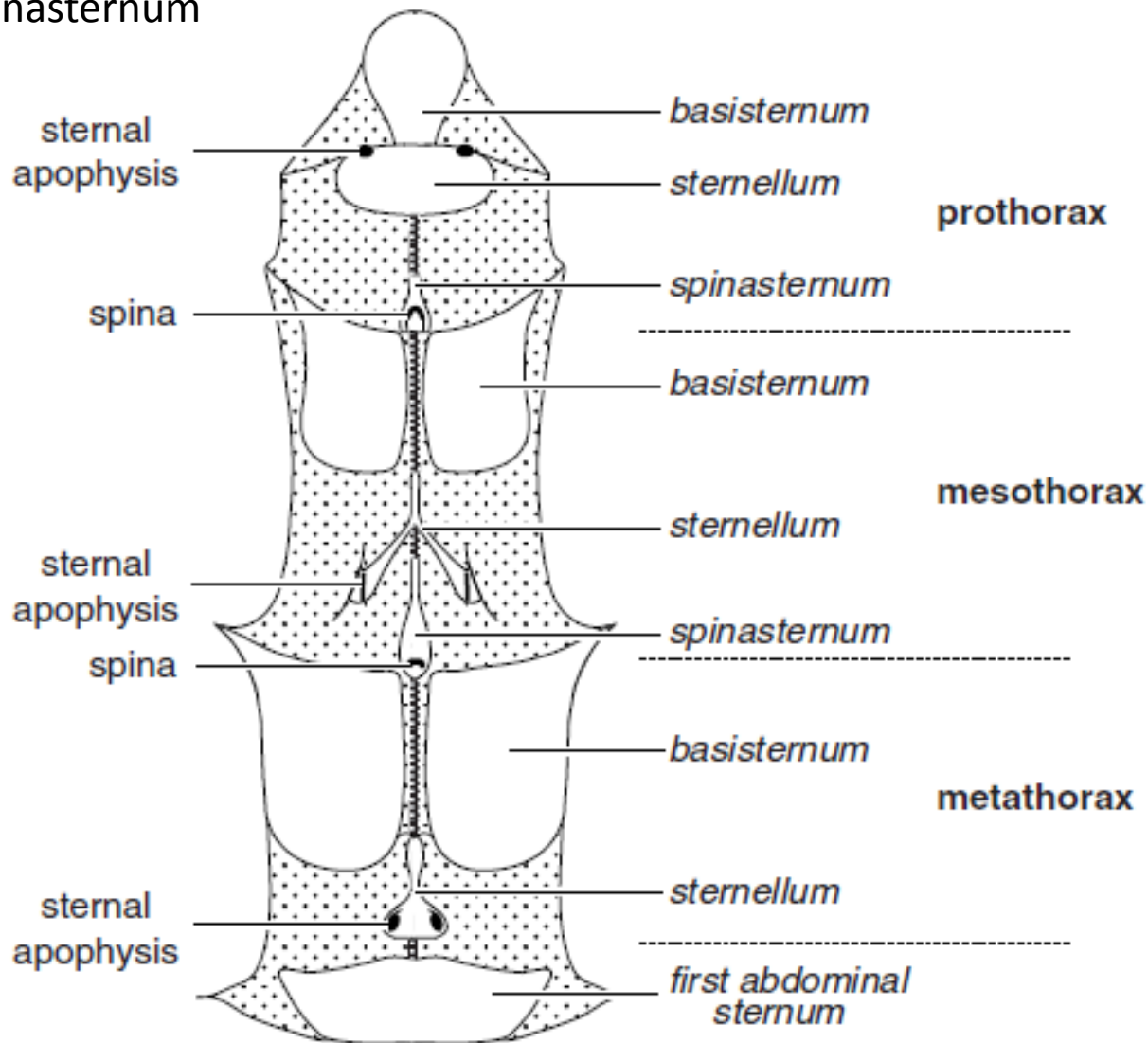




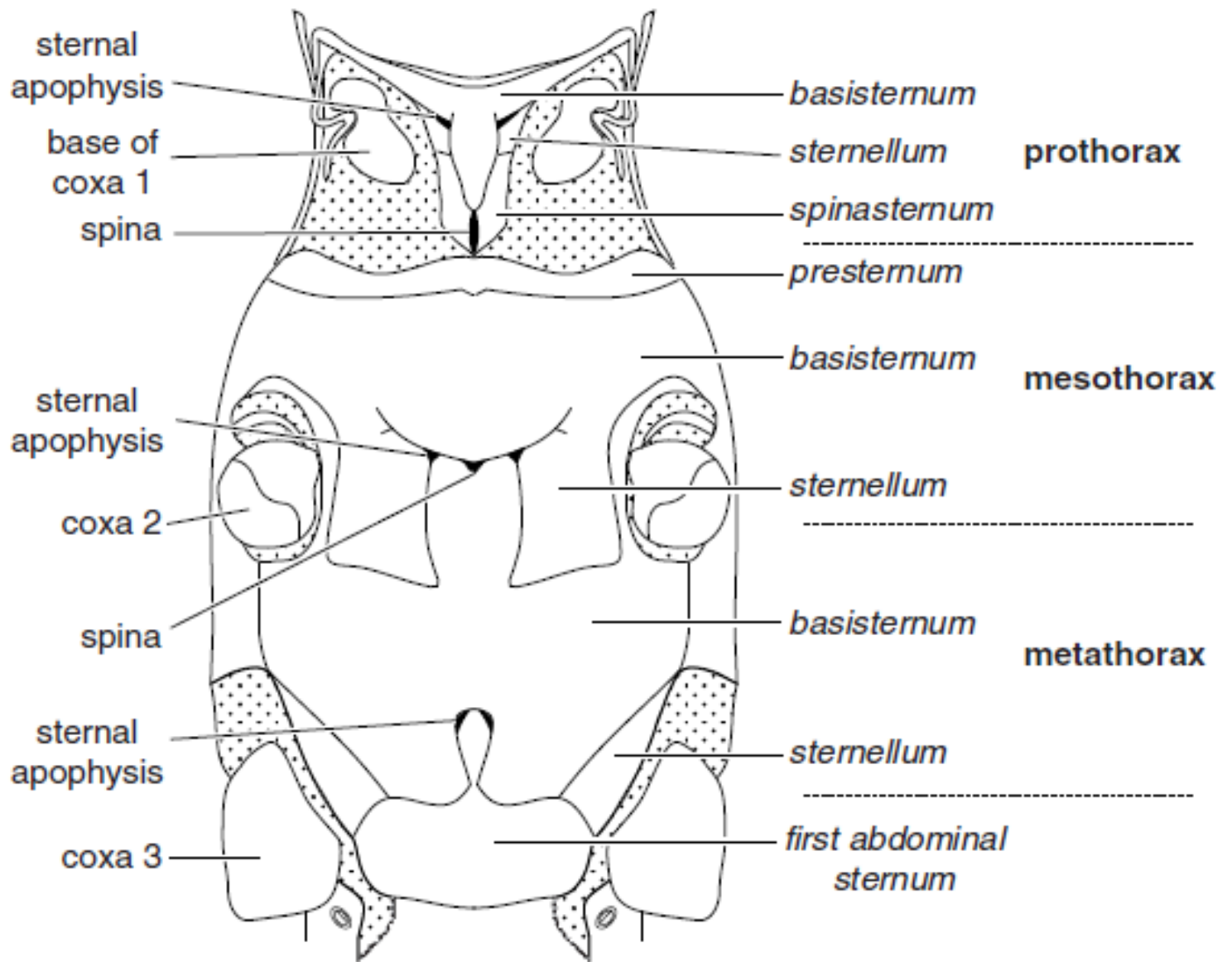
basalare + subalare:
 úpon svalů - pohyb křídel

Sternum

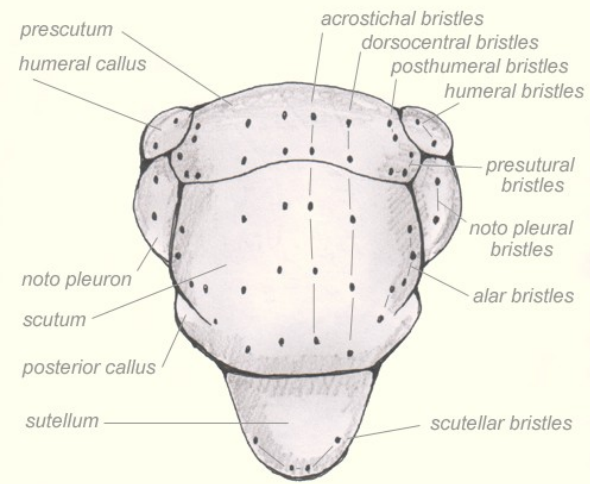
basisternum
sternellum
spinasternum



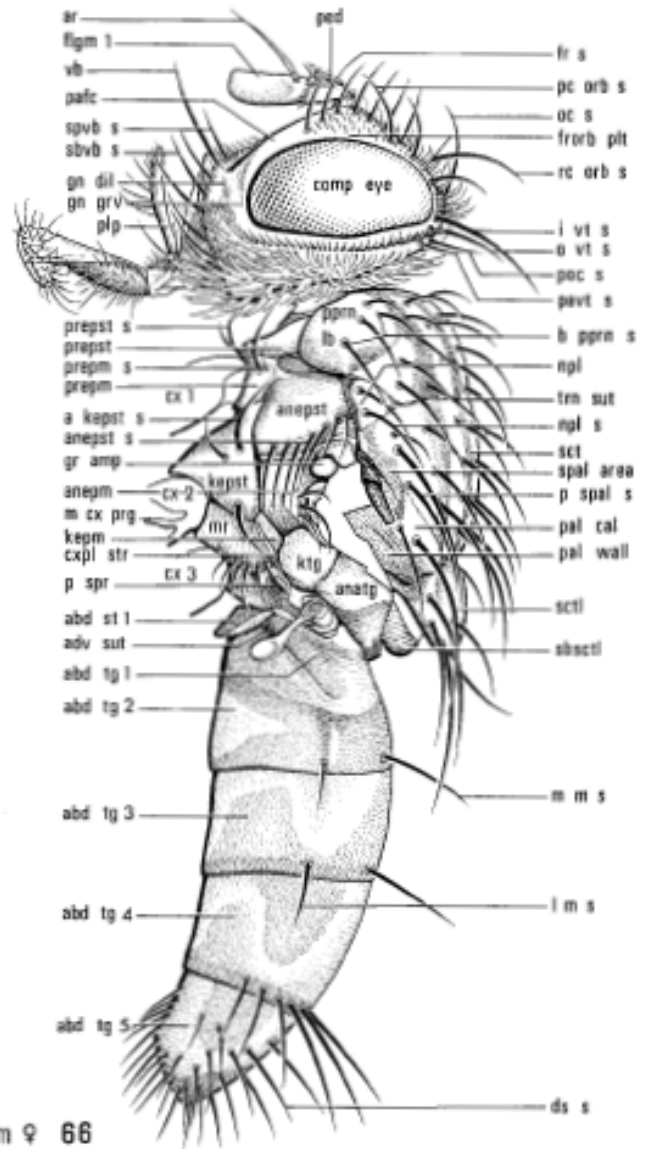
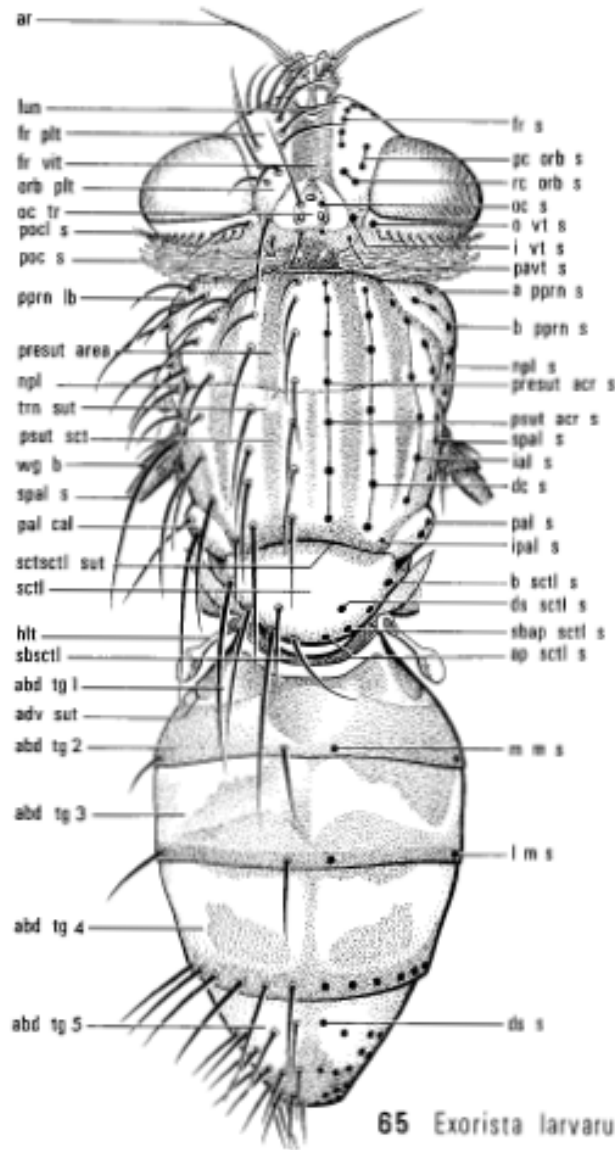
Ventrální pohled na hrud': případ s jasně oddělenými sklerity (šváb)



Ventrální pohled na hrud': případ se splynulou středo- a zadohrudí do pterothorakální destičky (saranče)



Body (dorsal) muscoidfly (Diptera)



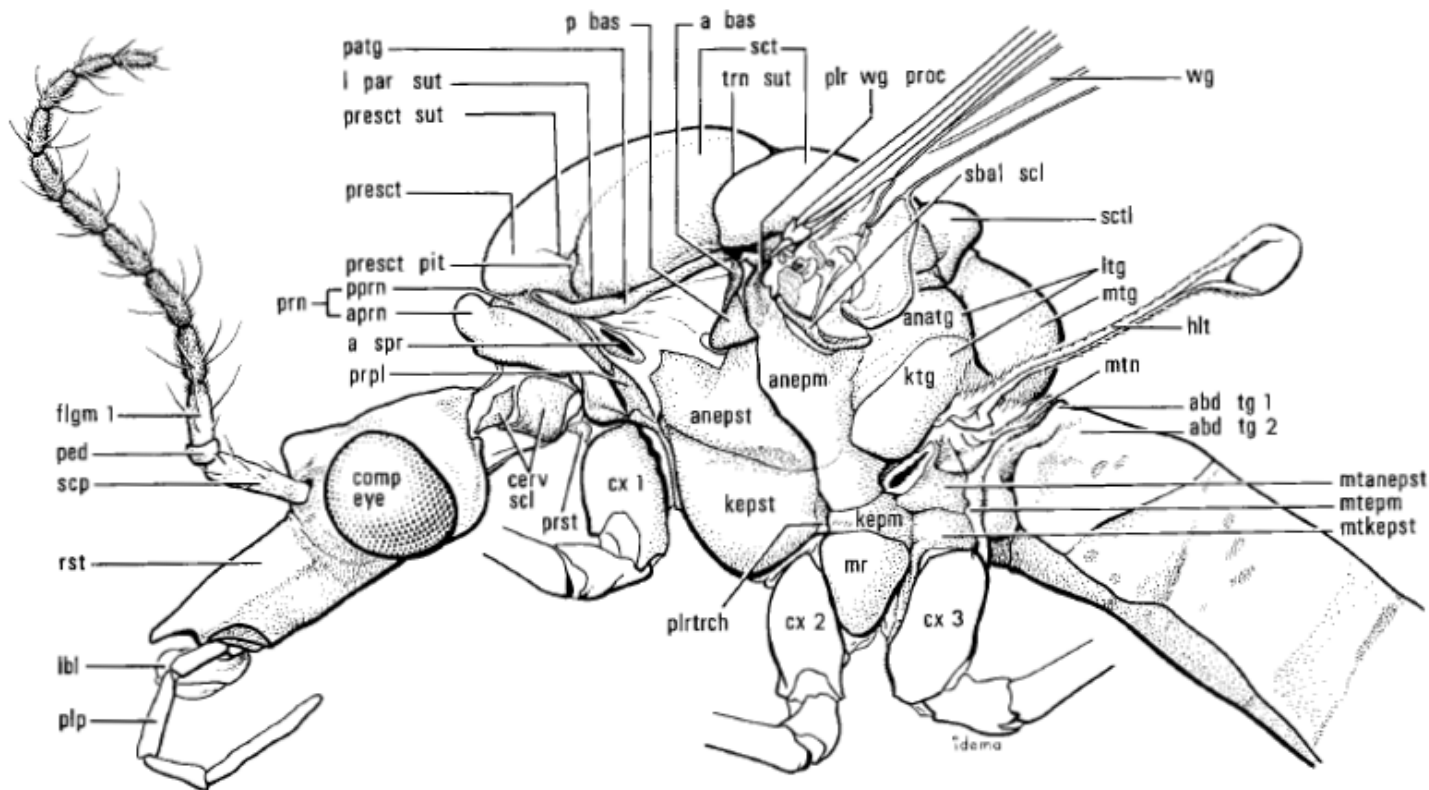


Fig. 2.64. Morphology and terminology of head and thorax of *Tipula trivittata* Say, lateral view.

a bas, anterior basalare
 abd tg, abdominal tergite
 anatg, anatergite
 anepm, anepimeron
 anepst, anepisternum
 aprn, antepnotum
 a spr, anterior spiracle
 cerv scl, cervical sclerite
 comp eye, compound eye
 cx, coxa
 flgm, flagellomere
 hlt, halter
 kepm, Katepimeron
 kepst, Katepisternum
 ktg, kata tergite

lbl, labellum
 l par sut, lateral parapsidal suture
 ltg, laterotergite
 mr, meron
 mtanepst, metanepisternum
 mtepm, metepimeron
 mtg, mediotergite
 mtkepst, metakatepisternum
 mtn, metanotum
 patg, paratergite
 p bas, posterior basalare
 ped, pedicel
 plp, palpus
 pltrch, pleurotrochantin
 plr wg proc, pleural wing process

pprn, postpronotum
 presct, prescutum
 presct pit, prescutal pit
 presct sut, prescutal suture
 prn, pronotum
 prpl, propleuron
 prst, prosternum
 rst, rostrum
 sbal scl, subalar sclerite
 scp, scape
 sct, scutum
 sctl, scutellum
 trn sut, transverse suture
 wg, wing

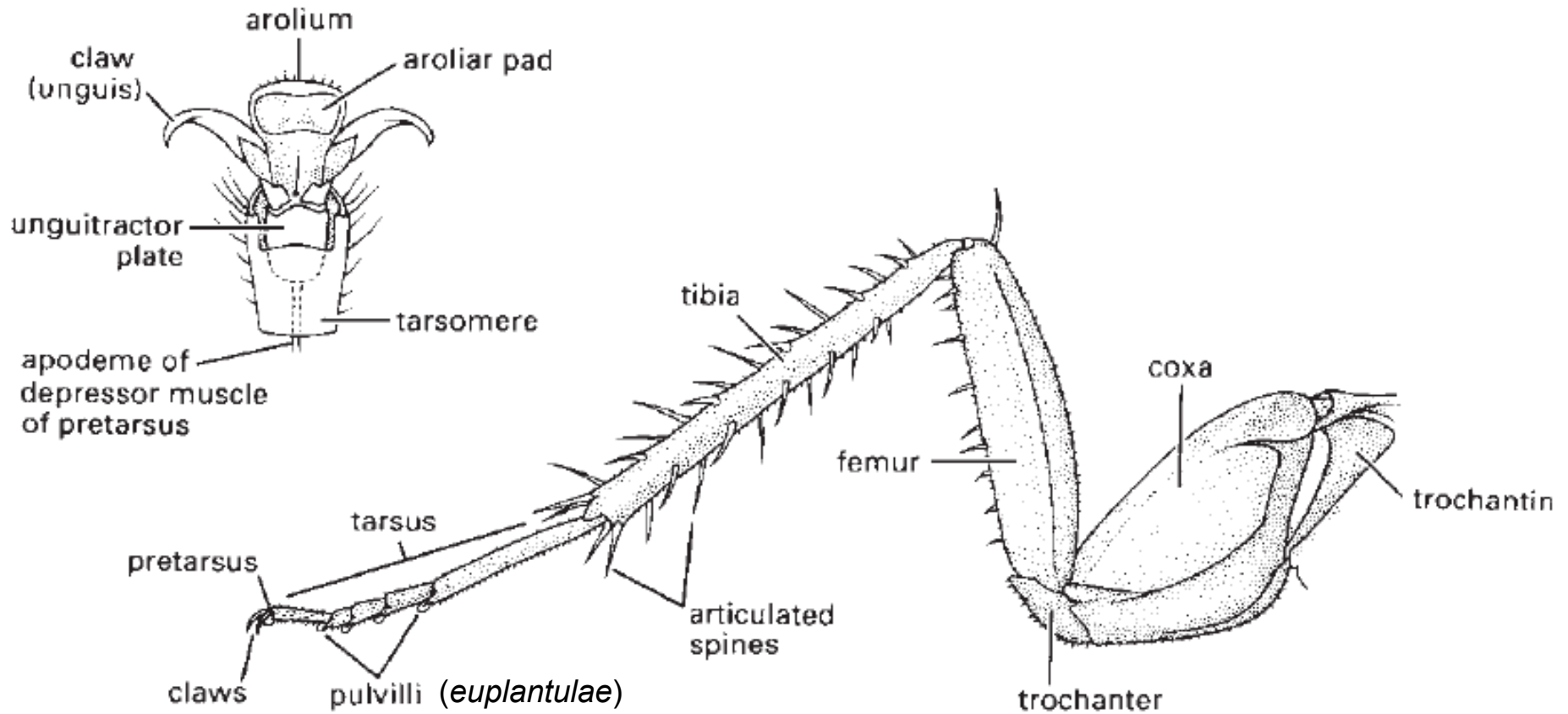
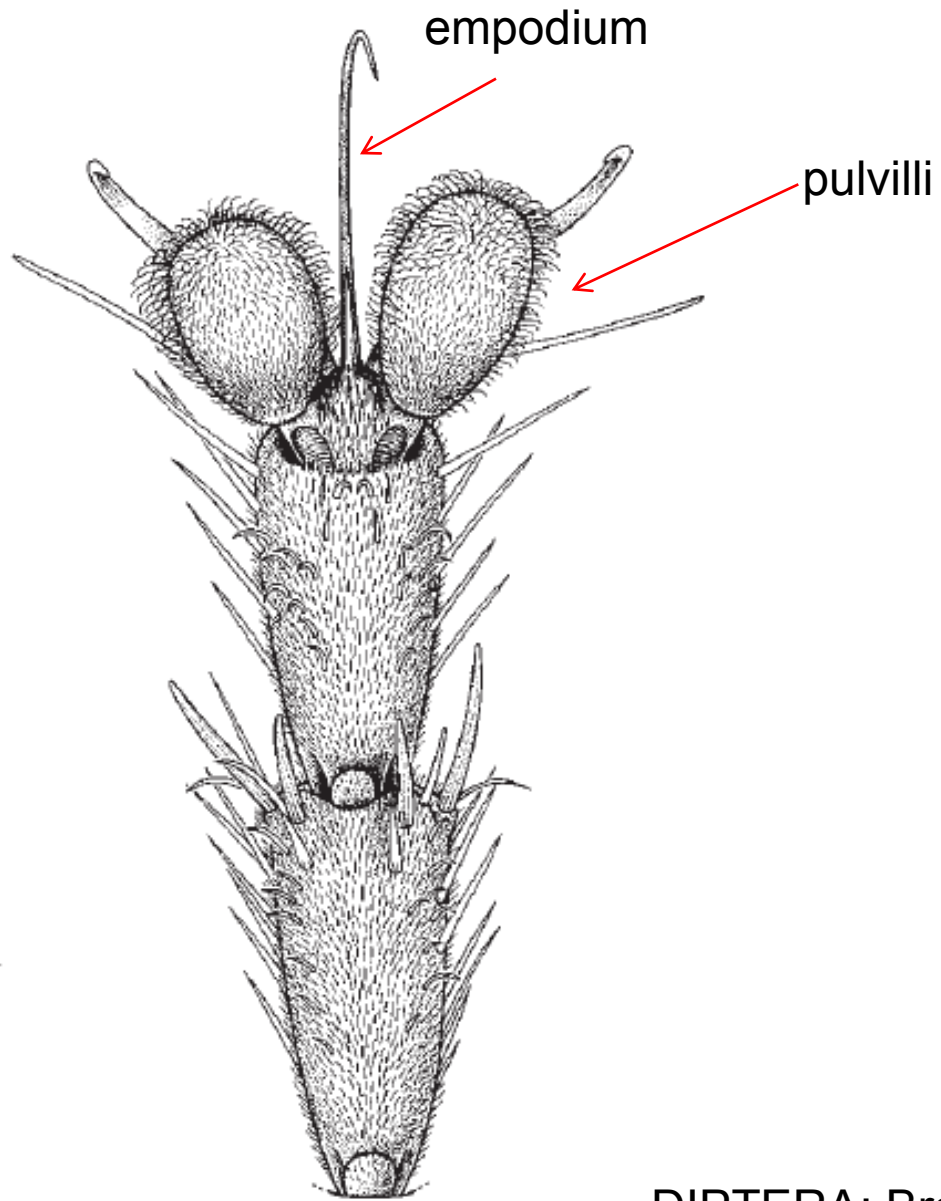
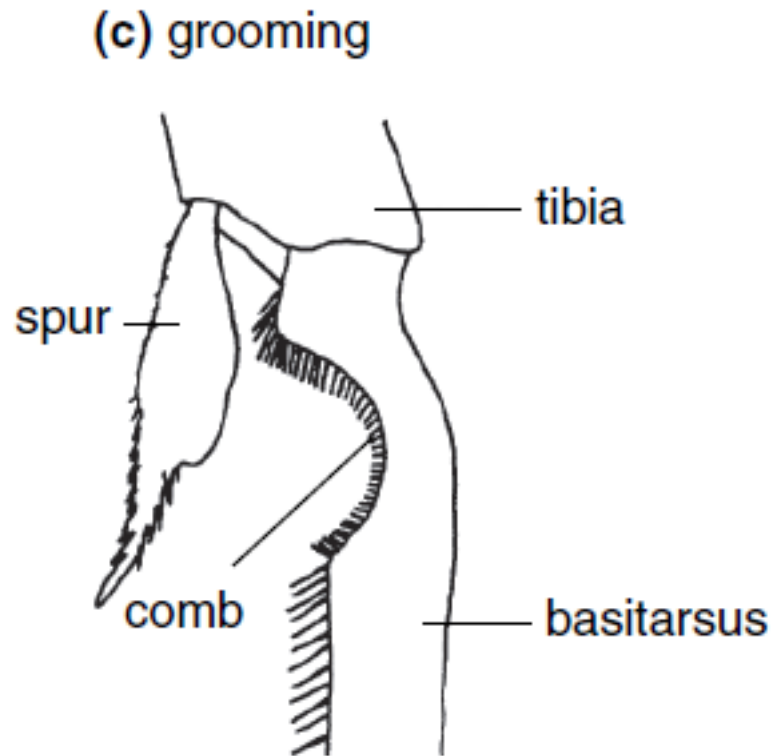


Fig. 2.21 The hind leg of a cockroach, *Periplaneta americana* (Blattodea: Blattidae), with enlargement of ventral surface of pretarsus and last tarsomere. (After Cornwell 1968; enlargement after Snodgrass 1935.)



DIPTERA: Brachycera

Čistící nohy

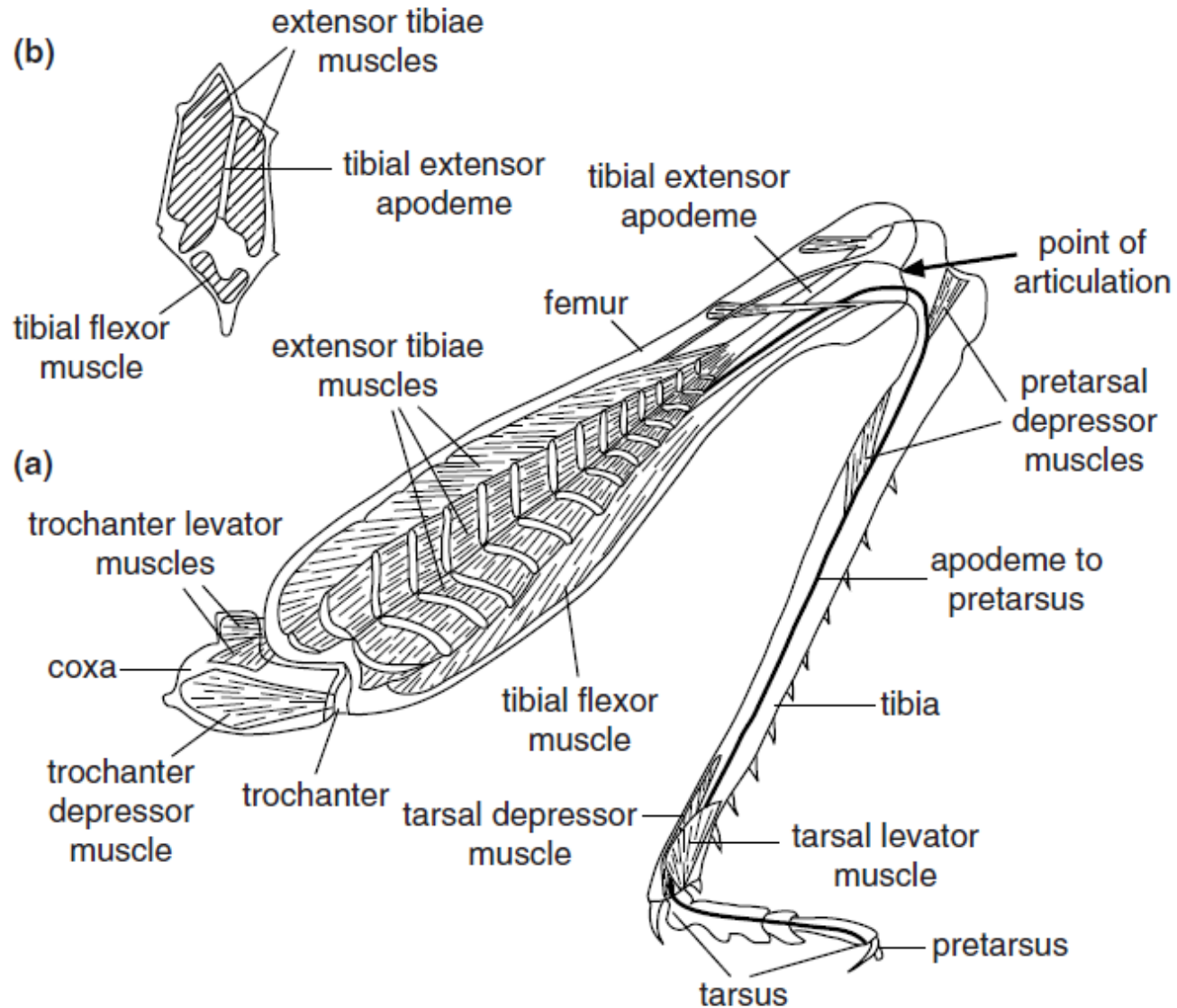


Hymenoptera: Mutilidae

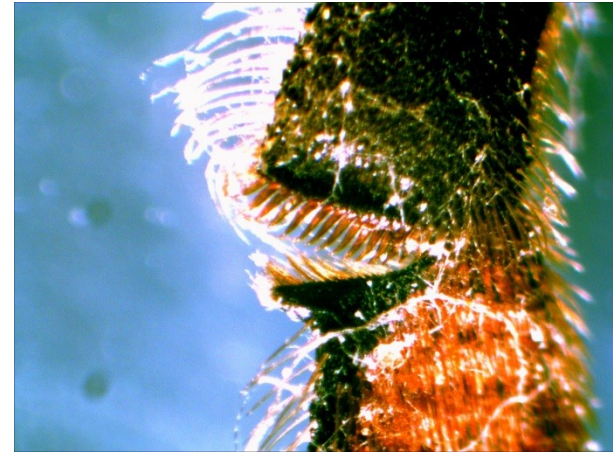
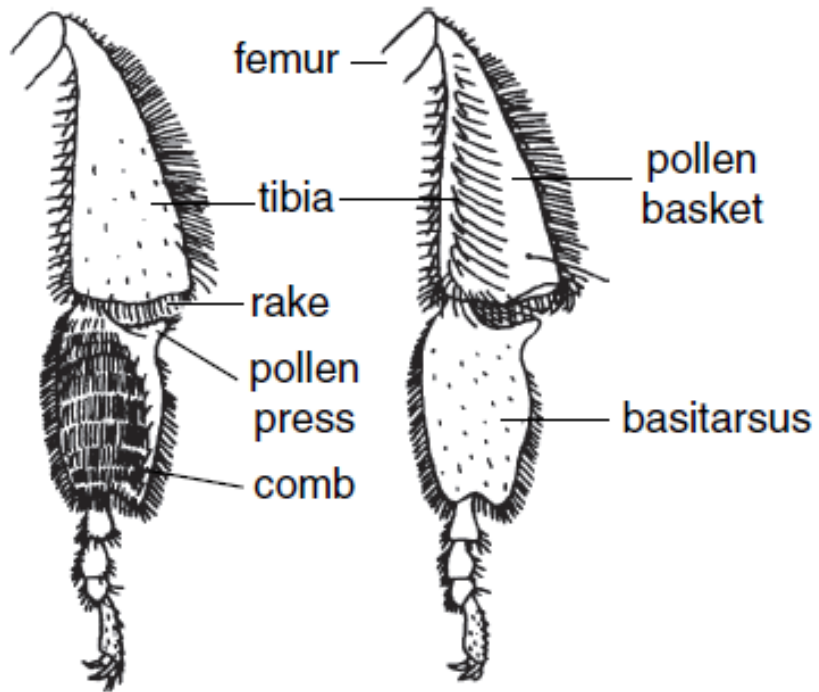


Coleoptera: Carabidae

Skákavé končetiny (saranče)



Sběrací končetiny



Hrabavé končetiny



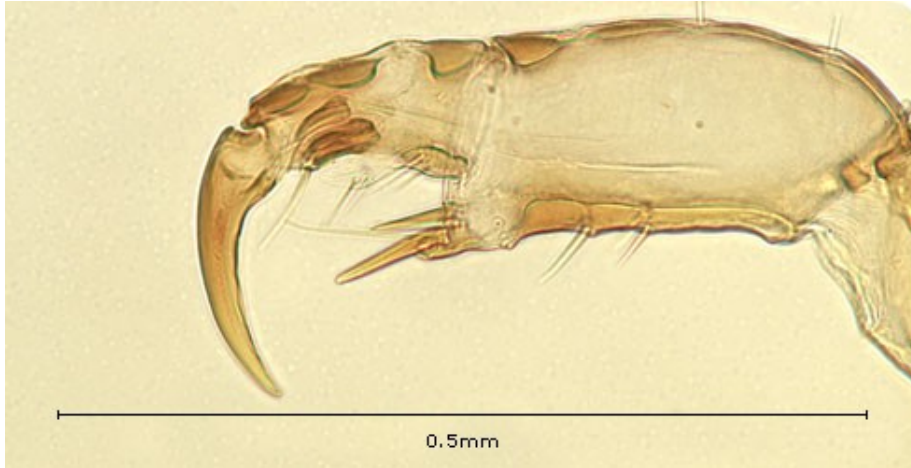
Plovavé končetiny



Loupeživé končetiny



Záchytné končetiny



Snovací končetiny



Snovatky (Embioptera)

