

## **Vzorky na ELFO**

### **HMYZ:**

bourec samice hemolymfa

bourec samec hemolymfa

G. mellonella hemolymfa

včela hemolymfa

### **RYBY:**

lín plasma

kapr plasma

karas plasma

pstruh plasma

parma plasma

ostroretka plasma

plotice plasma

### **PTÁCI:**

zebřička plasma

křepelka plasma

slepice plasma

### **SAVCI:**

myš plasma

pes sérum

lidské sérum

**Rozpis:**

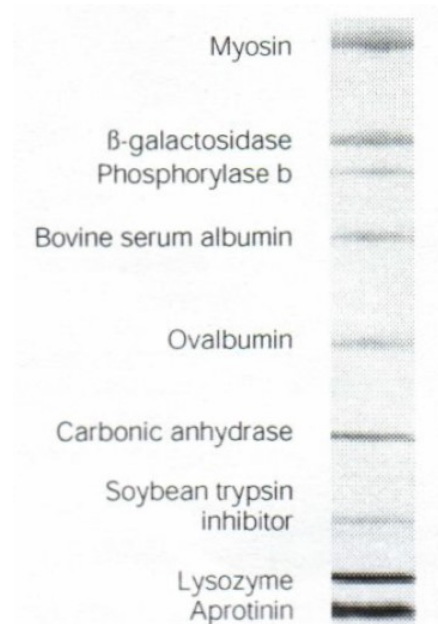
- S - STANDARD = ZEBŘÍČEK  
 - 45024M  
 (LSM) v mg/ml

	1	2	3	4	5	6	7	8	9	10	11	12
N												
A	B.m. ♀	B.m. ♂	LSM 10	LSM 5	LSM 2,5	S	KARAS	MÝŠ	VČELA	G.m.		
R												
B	MÝŠ	PES	ČLOVĚK	SLEPICE	KAPR	VČELA	S	LSM 10	LSM 5	LSM 2,5		
T+K												
C	ZEBŘÍČKA	KŘEPELKA	SLEPICE	ČLOVĚK	LSM 10	LSM 5	LSM 2,5	S	LÍN	G.m.		
VIR												
D	LÍN	KAPR	KARAS	PSTRUH	PLOTICE	OSTRORETKA	CHAMPAÑA PARMA	PES	S	ZEBŘÍČKA		
E												
F												
G												
H												

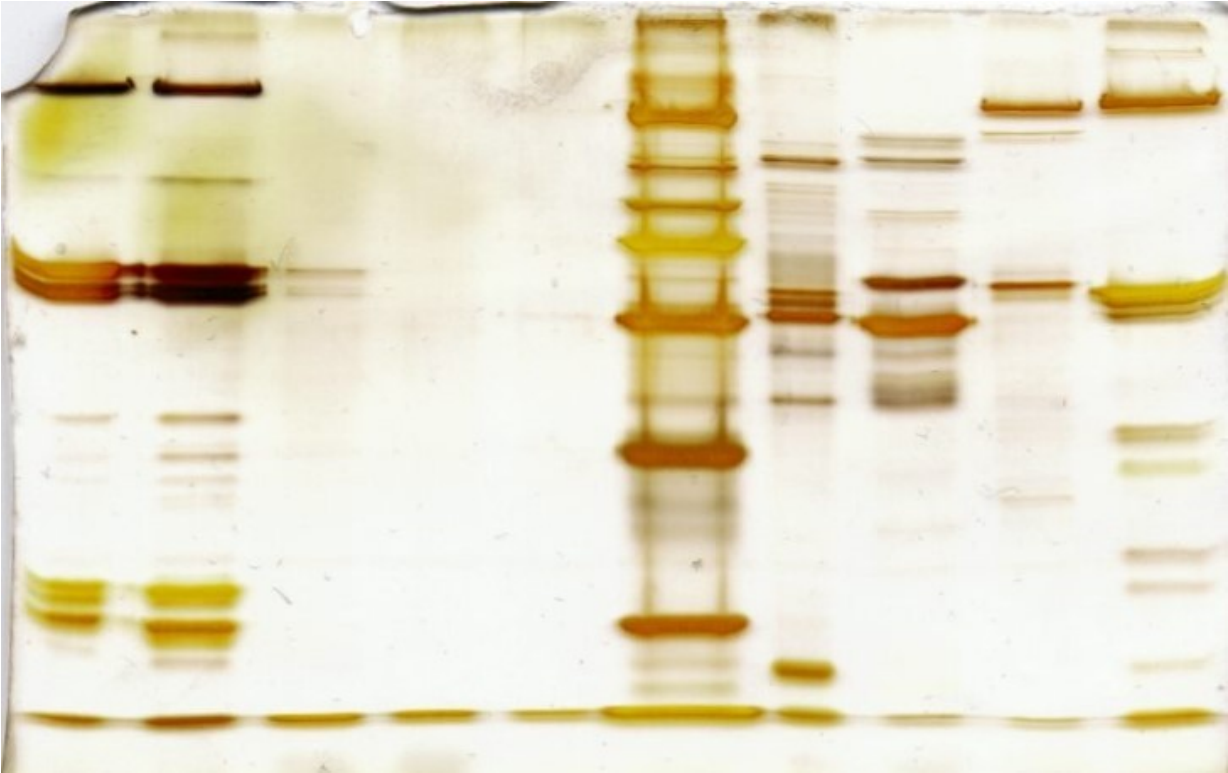
**Standard:**

**Protein Molecular Weights (daltons)**

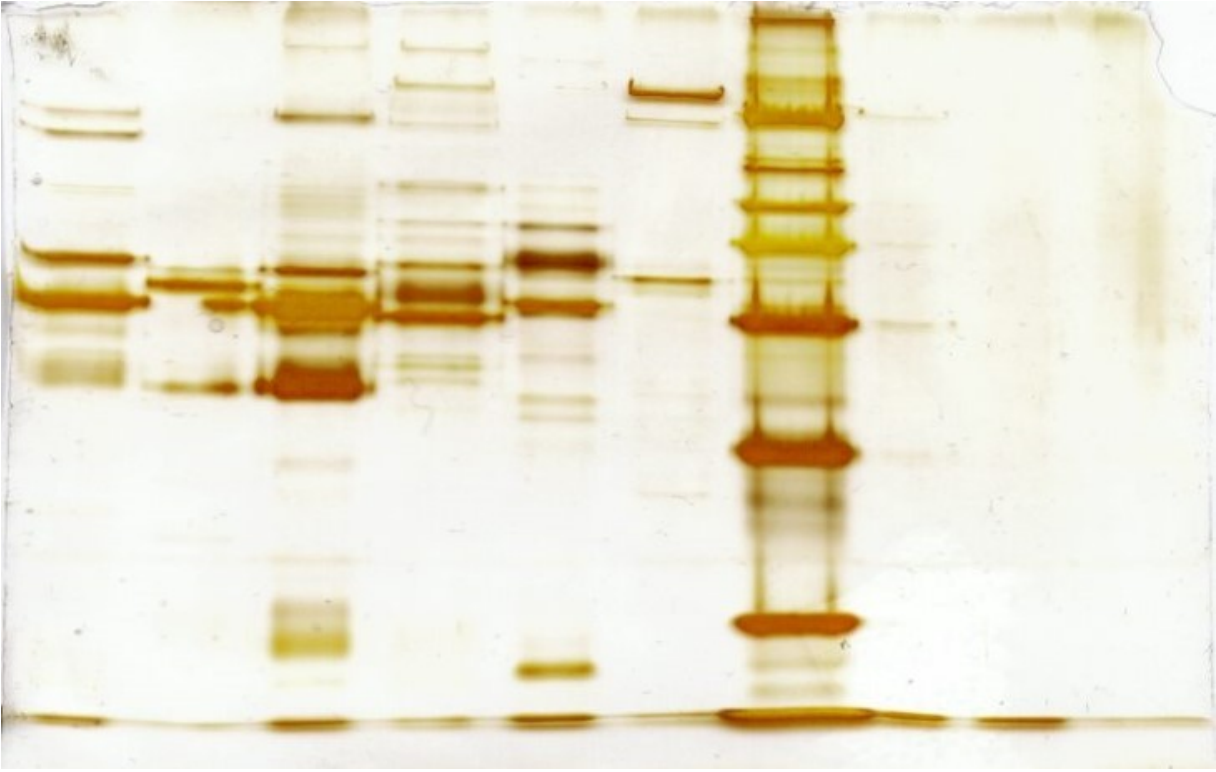
Protein	Molecular Weight	Broad Range	Low Range	High Range
Myosin	200,000	X		X
β-galactosidase	116,250	X		X
Phosphorylase b	97,400	X	X	X
Serum albumin	66,200	X	X	X
Ovalbumin	45,000	X	X	X
Carbonic anhydrase	31,000	X	X	
Trypsin inhibitor	21,500	X	X	
Lysozyme	14,400	X	X	
Aprotinin	6,500	X		



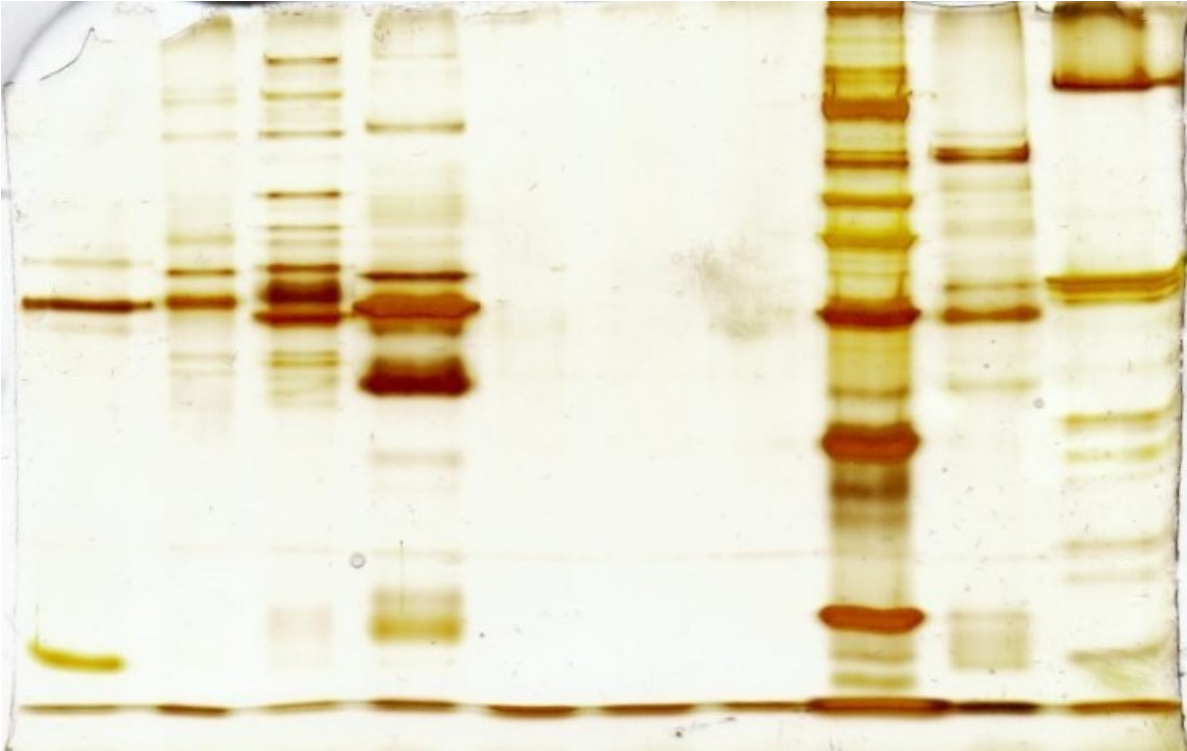
**Gel1:**



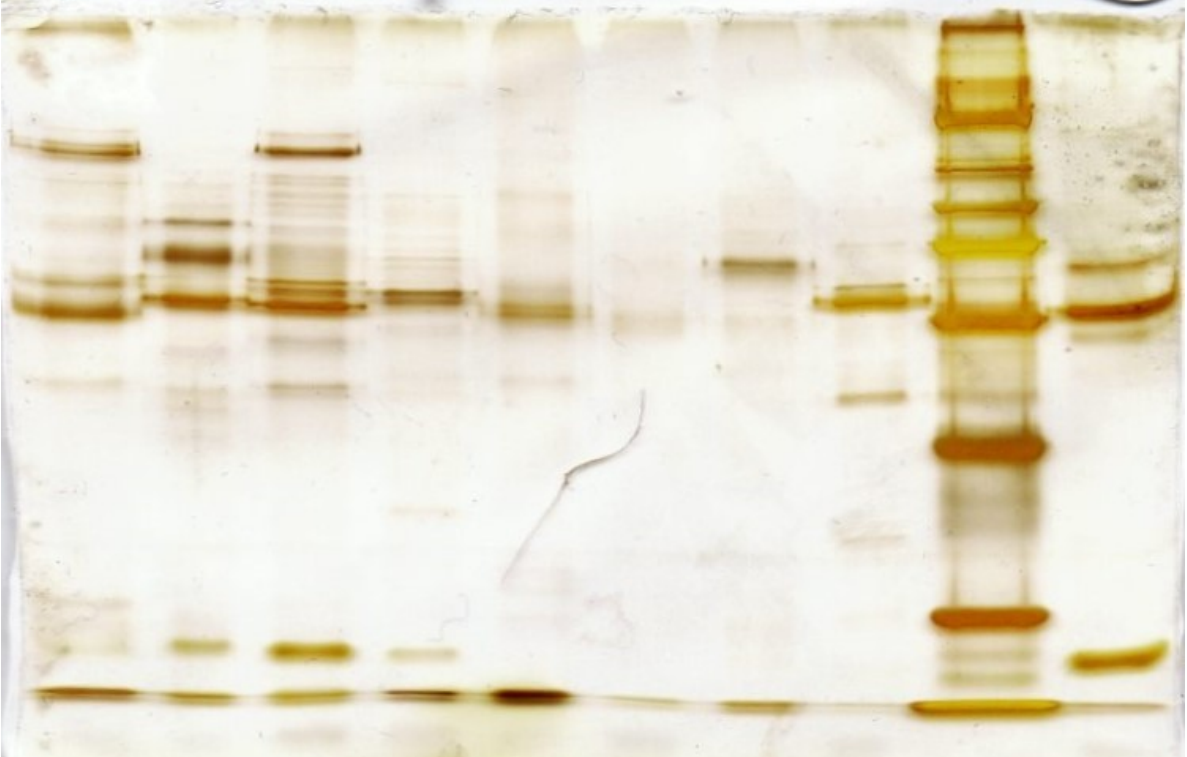
**Gel2:**



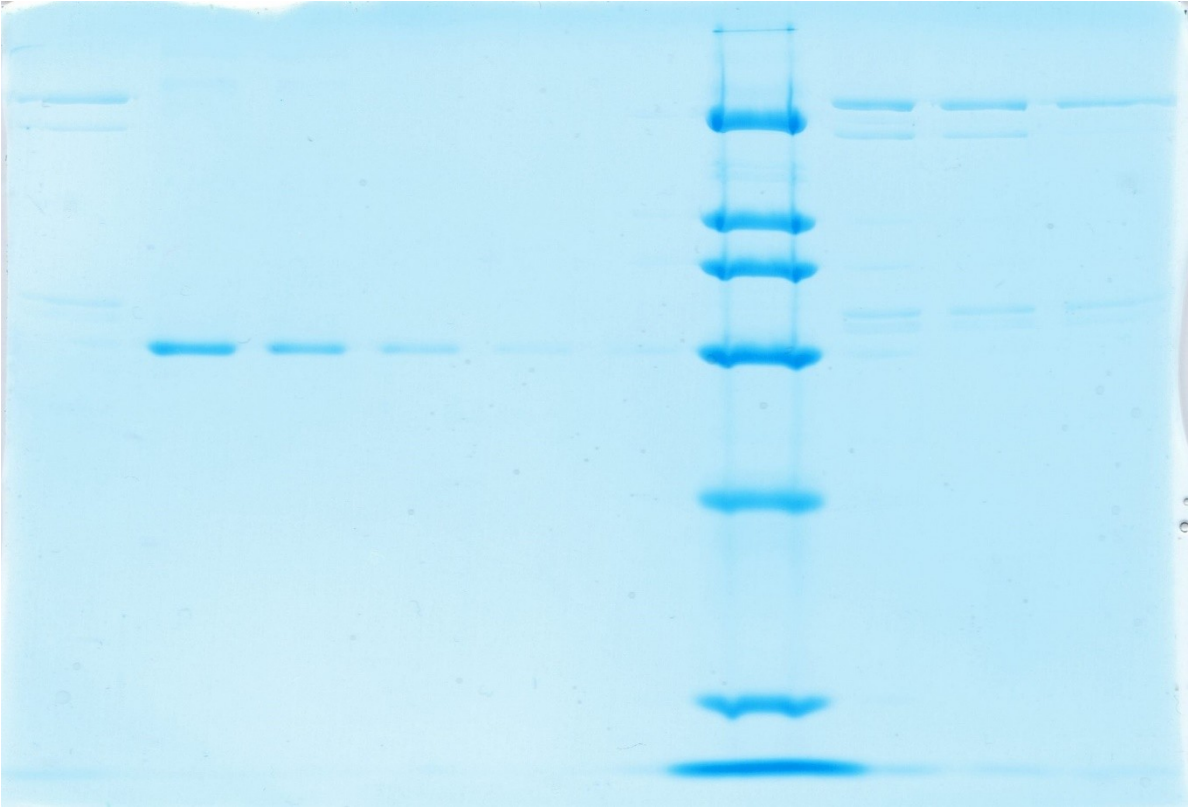
**Gel3:**



**Gel4:**



**Gel coomasie blue:**



**Gel coomasie blue + stříbro:**

