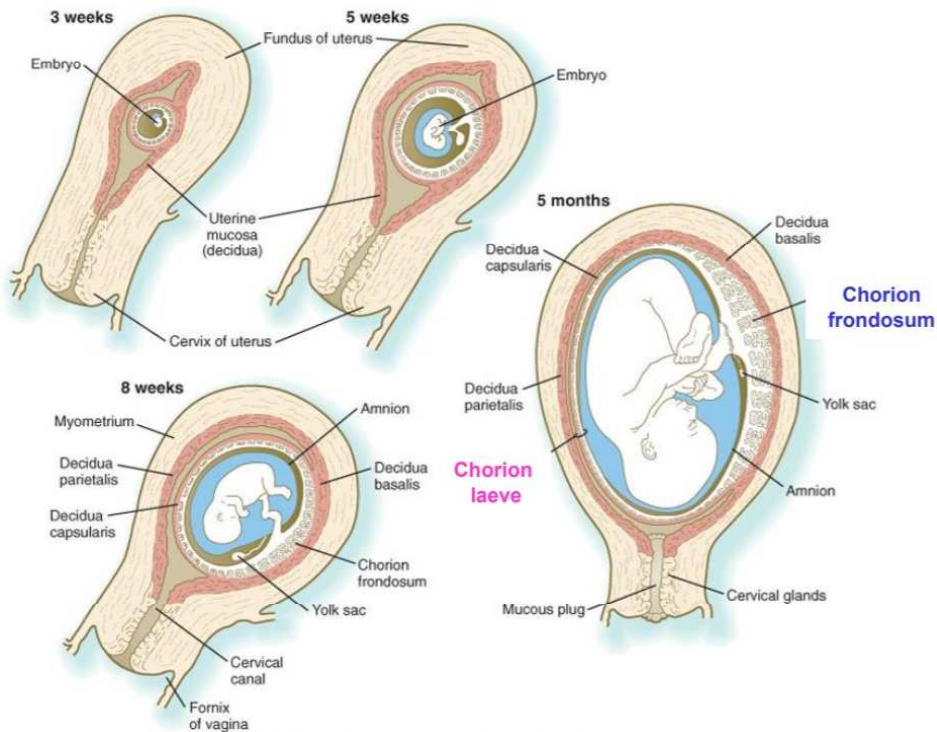


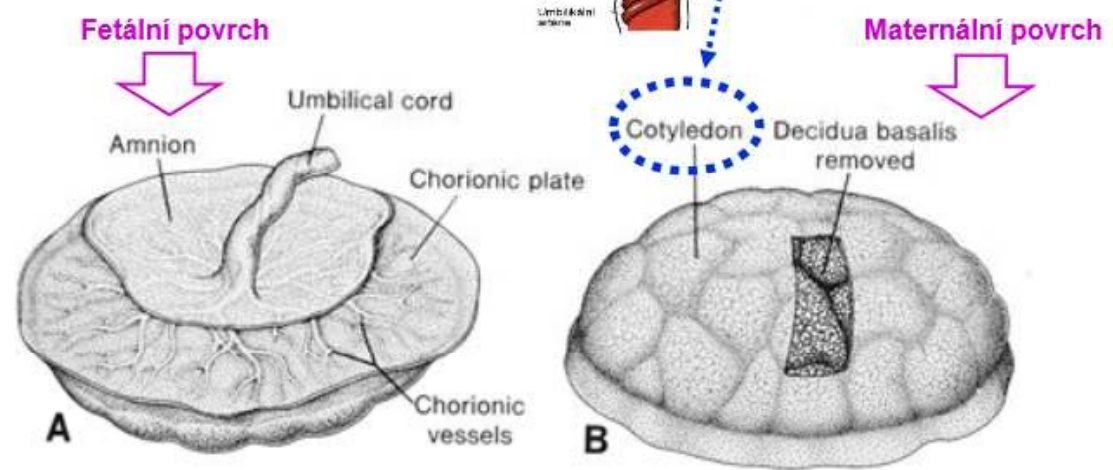
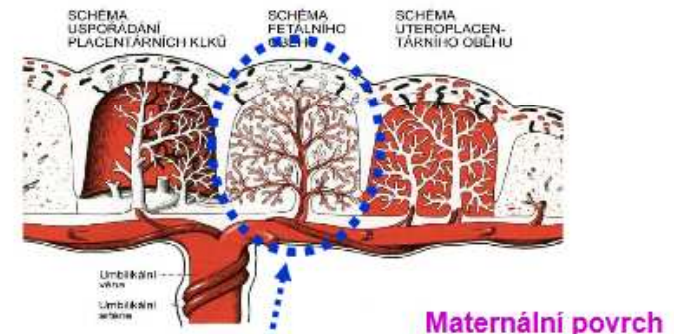
Embryologie II

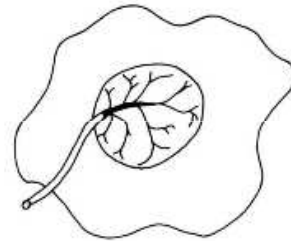
Placenta. Uložení plodu v děloze. Vícečetná těhotenství. Zralost a donošenost.
Hasseho pravidlo.

PLACENTA

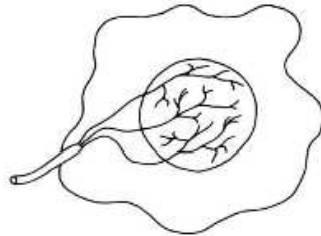


Carlson: Human Embryology and Developmental Biology, 4th Edition. Copyright © 2009 by Mosby, an imprint of Elsevier, Inc. All rights reserved.





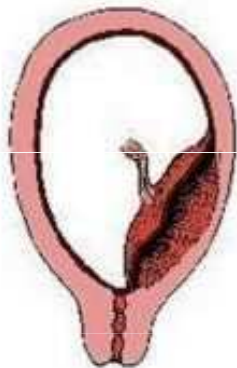
Insertio marginalis



Insertio velamentosa
(placenta velamentosa)



Normal



Accreta

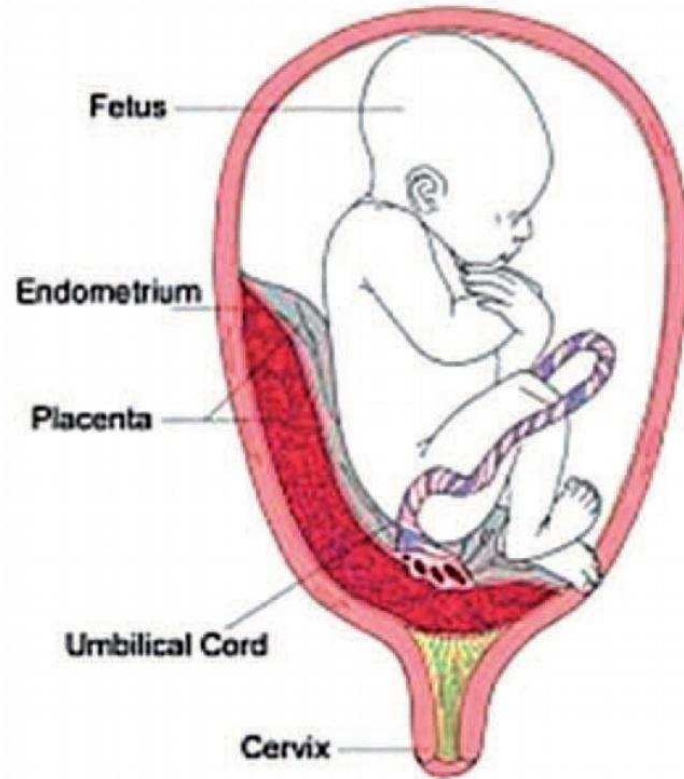


Increta



Percreta

Total Placenta Previa



PUPEČNÍK *(funiculus umbilicalis)*

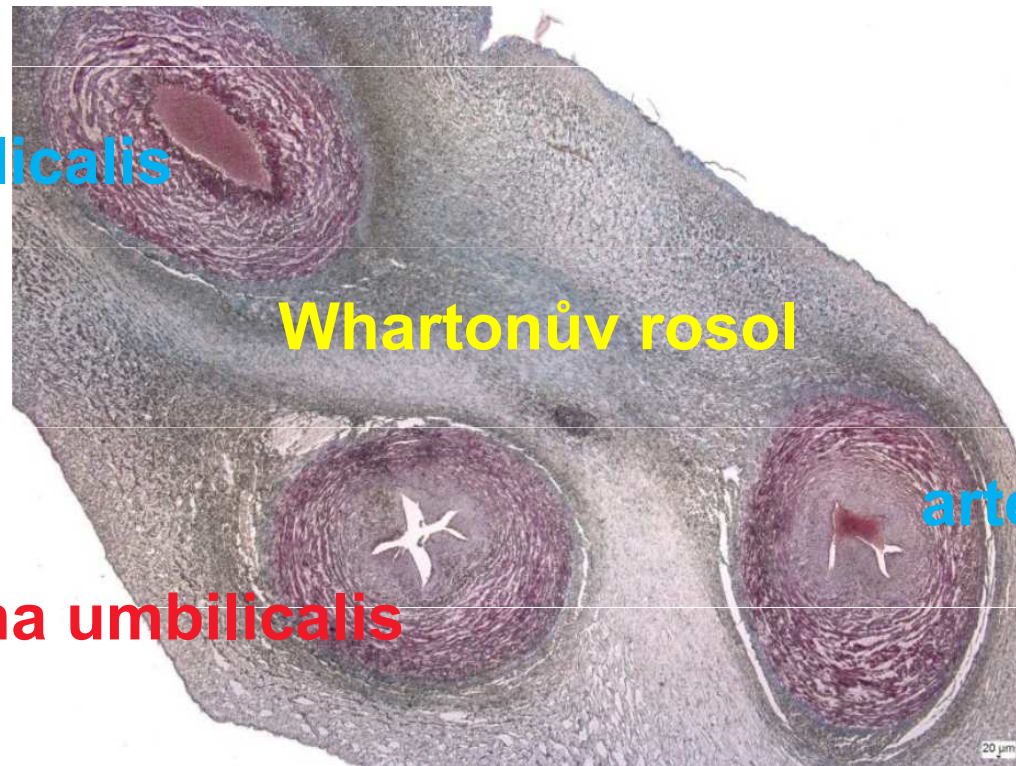


arteria umbilicalis

Whartonův rosol

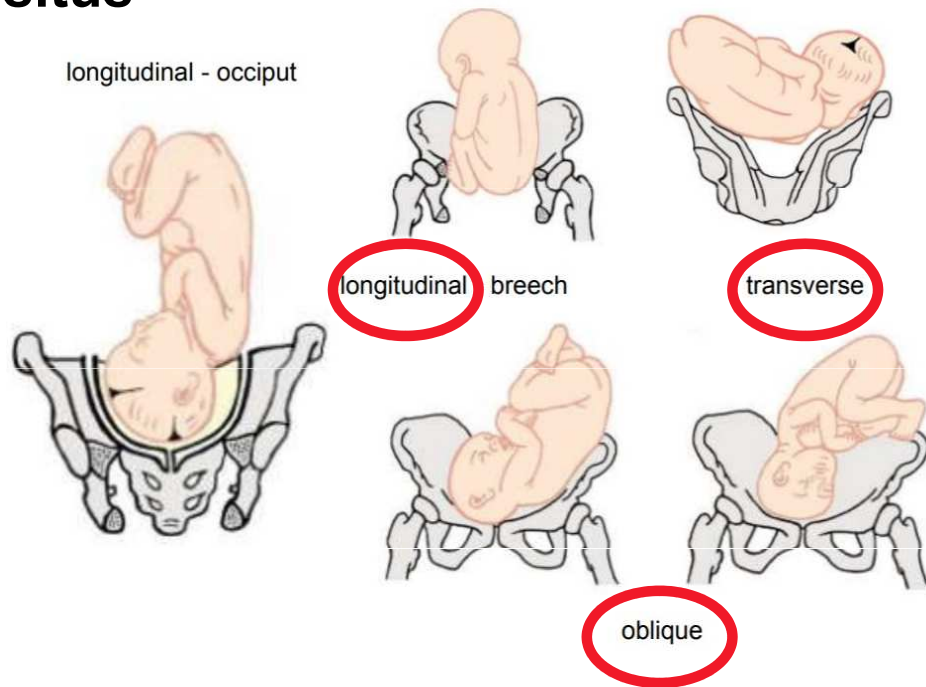
vena umbilicalis

arteria umbilicalis

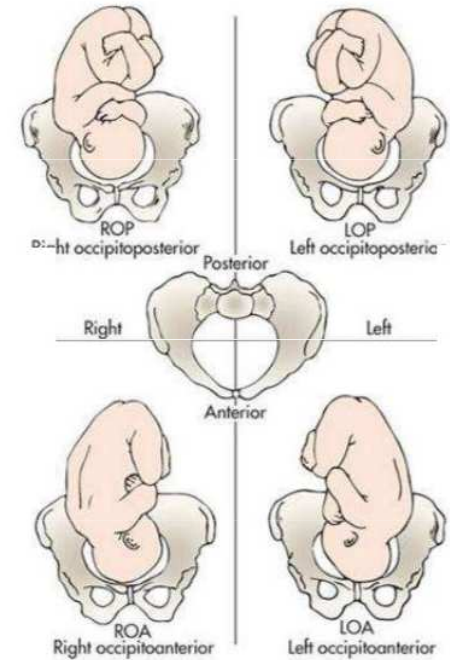


ULOŽENÍ PLODU V DĚLOZE

situs



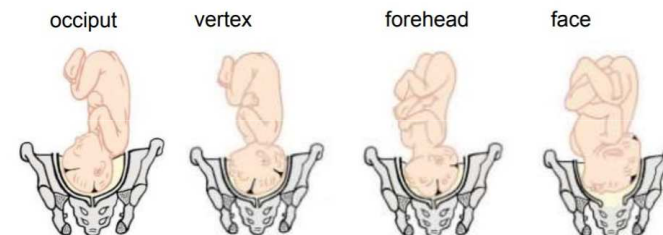
positio



HABITUS



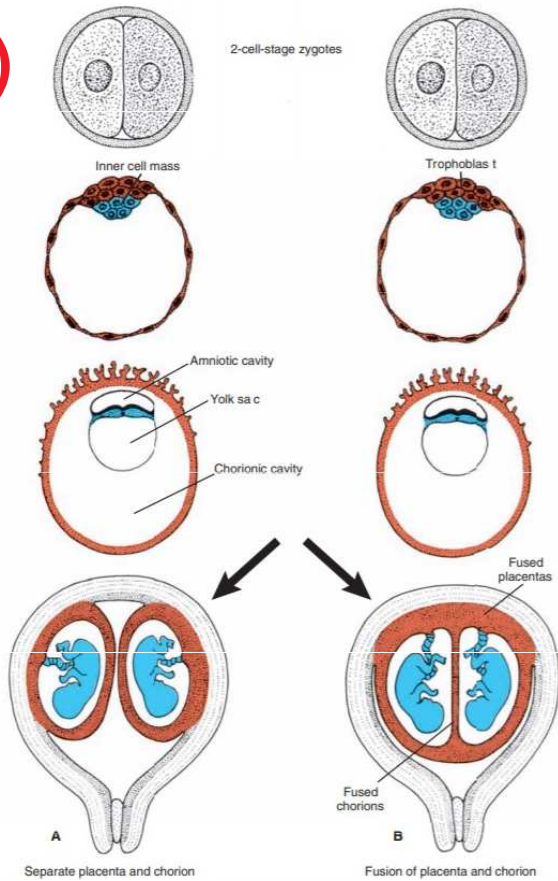
PRESENTATION



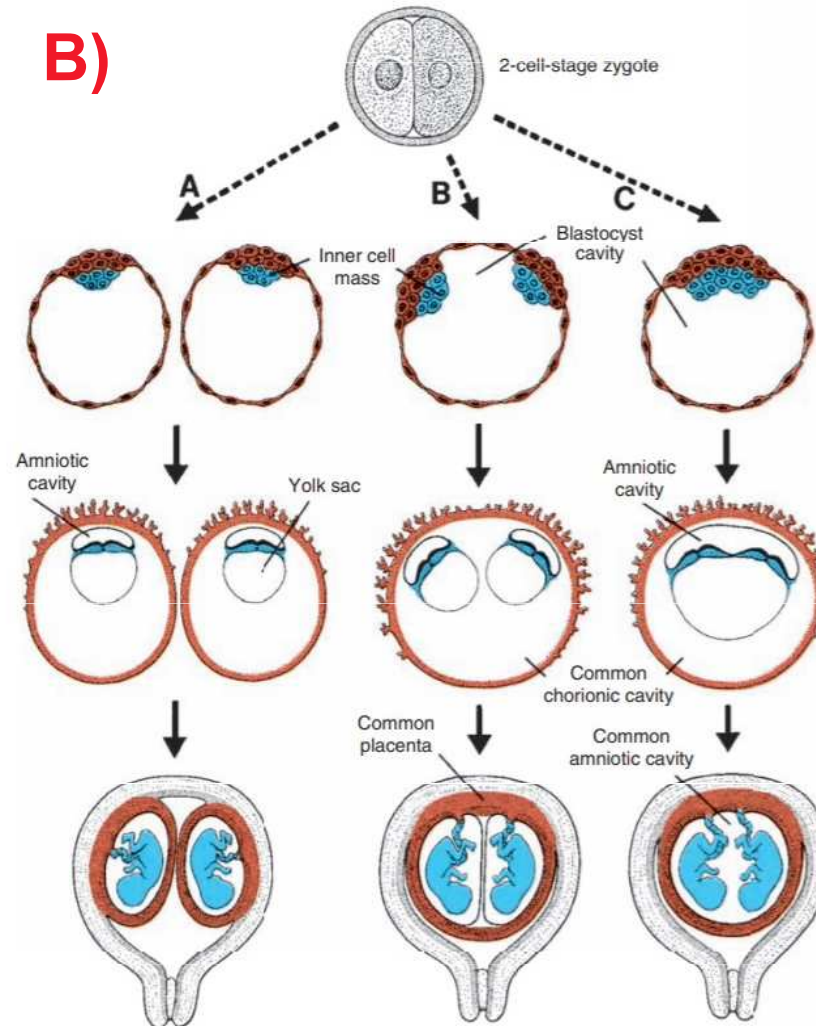
DVOJČATA



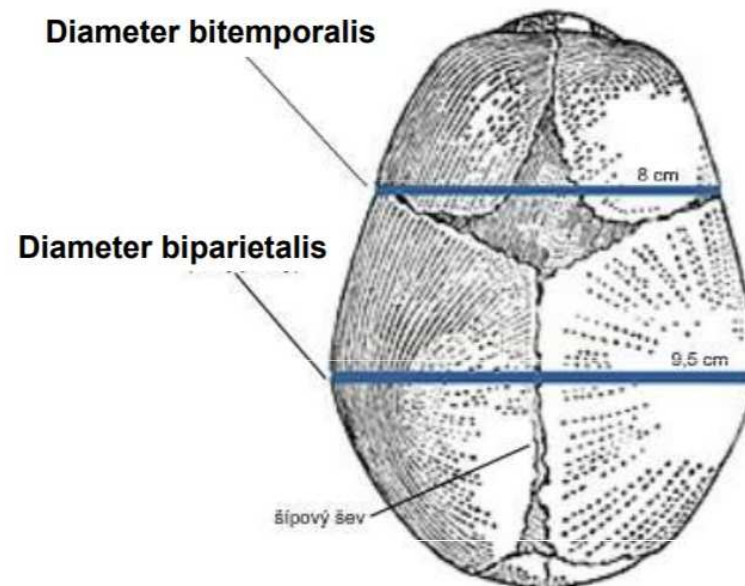
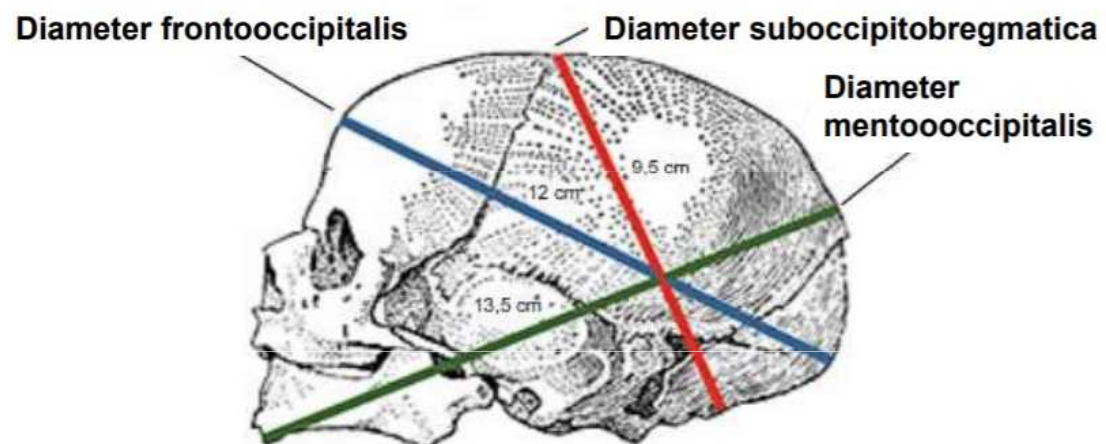
A)



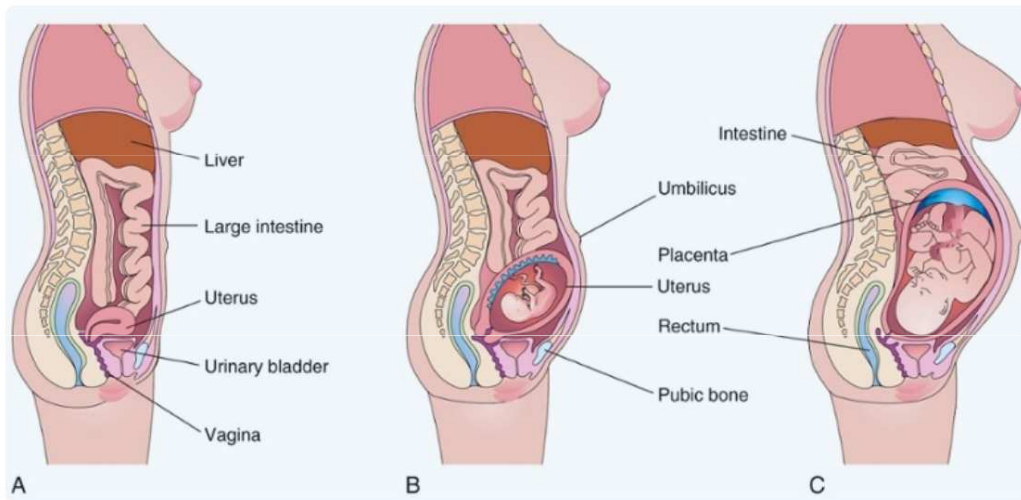
B)



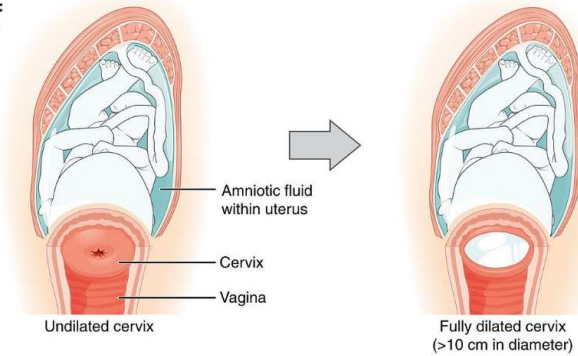
ZRALOST A DONOŠENOST



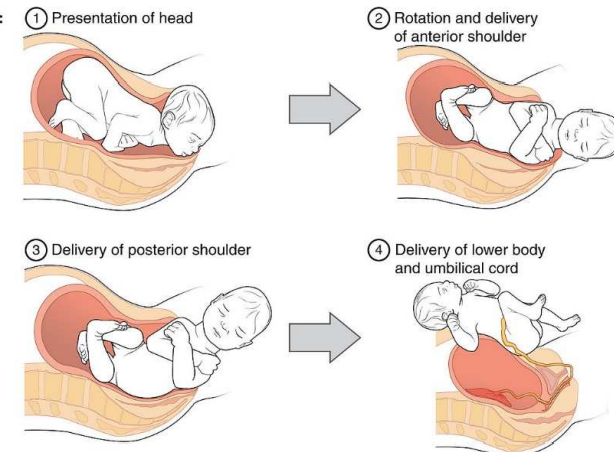
TĚHOTENSTVÍ A POROD



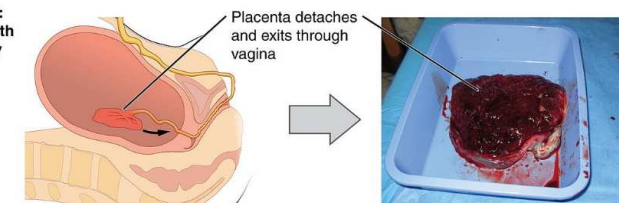
Stage 1:
Dilation



Stage 2:
Birth



Stage 3:
Afterbirth
delivery



HASSEHO PRAVIDLO



„lunární měsíc“ = 28 dní

- určování stáří plodu
- **3.-5.** lunární měsíc = druhá mocnina měsíce → délka v cm
- **6.-10.** lunární měsíc = pětinásobek měsíce → délka v cm

SHRNUTÍ

- Placenta a pupečník – morfologie, funkce, základní abnormality
- Uložení plodu v děloze (*situs, positio, habitus, presentatio*)
- Délka těhotenství, zralost a donošenost plodu, Hasseho pravidlo

Klára Dolinová
Peter Staňo
Yoni Solomonov
&
Petr Vaňhara

2020