

Rozsivky zaživa

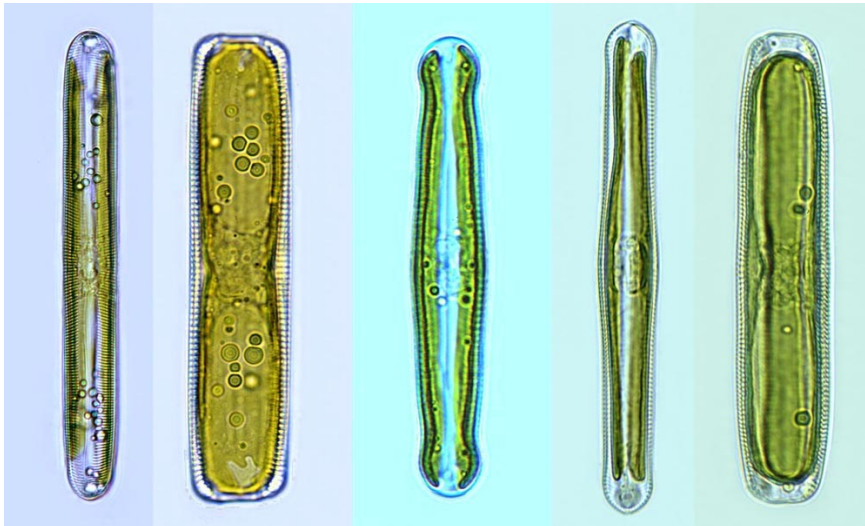
Symetrické rozsivky s raphe na obou valvách

Navicula



Navicula gregaria

Pinnularia



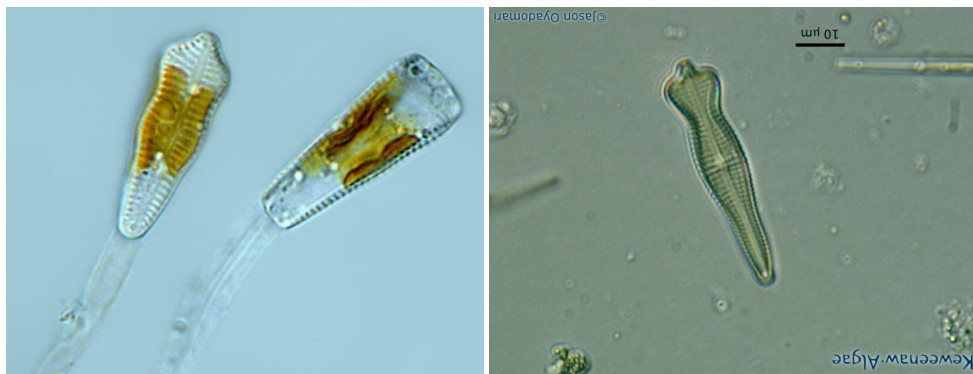
Rozsivky zaživa

Asymetrické rozsivky s raphe na obou valvách

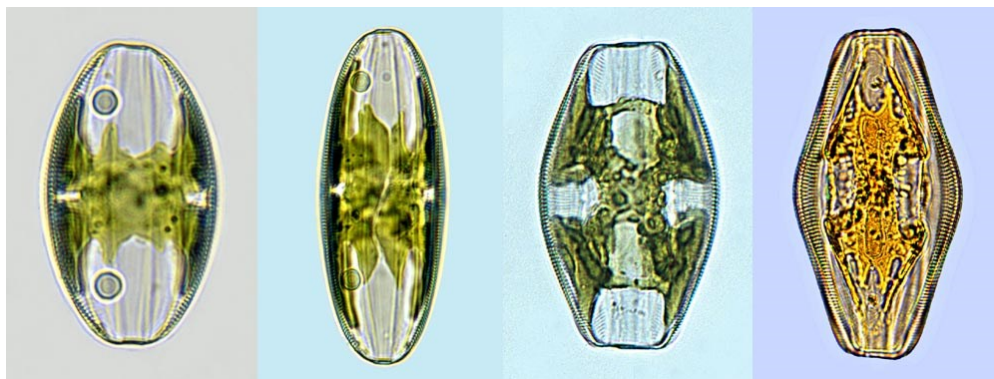
Gyrosigma



Gomphonema



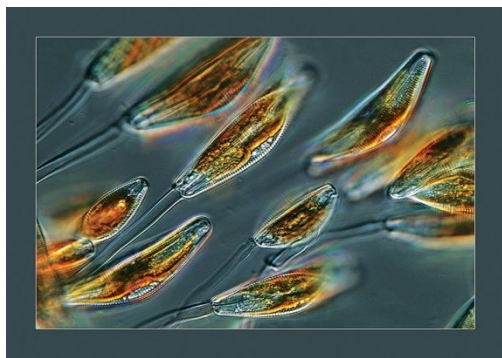
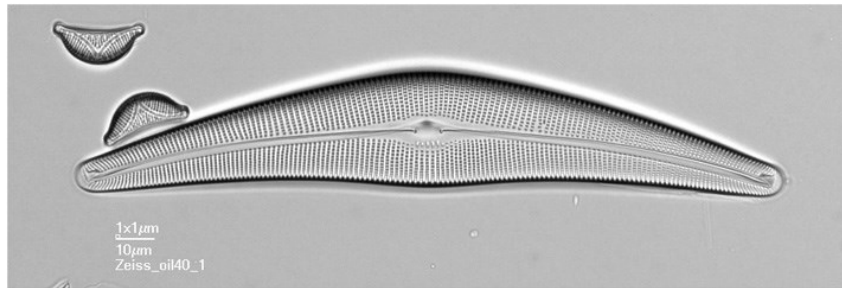
Amphora



Rozsivky zaživa

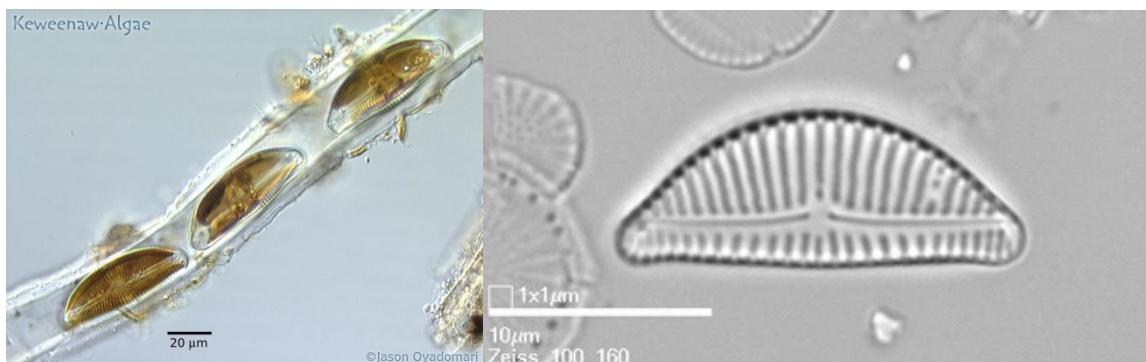


Cymbella



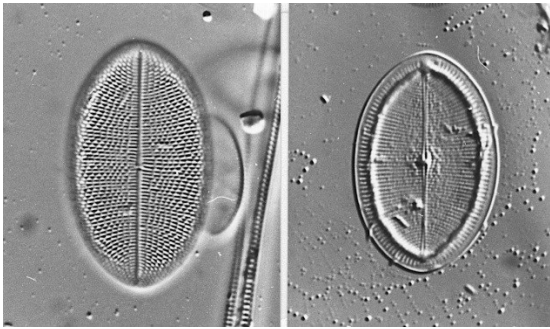
Cymbella- slizové stopky

Encyonema- slizové trubice

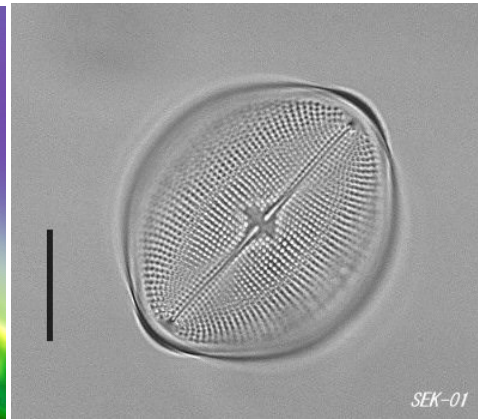
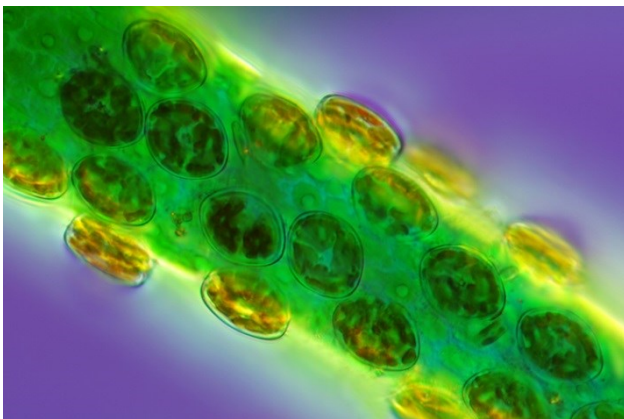


Rozsivky zaživa

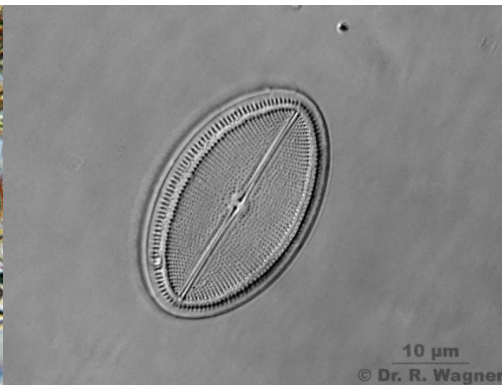
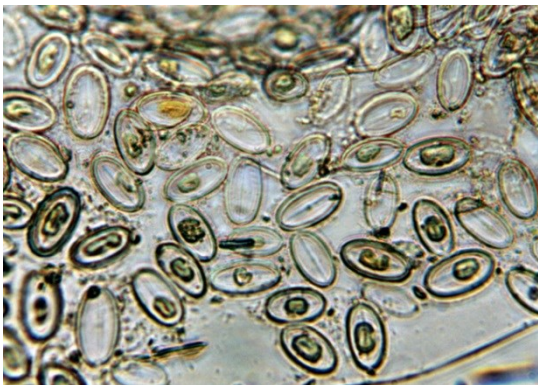
Monoraphidní rozsivky



Cocconeis pediculus



Cocconeis placentula



Achnanthydium minutissimum



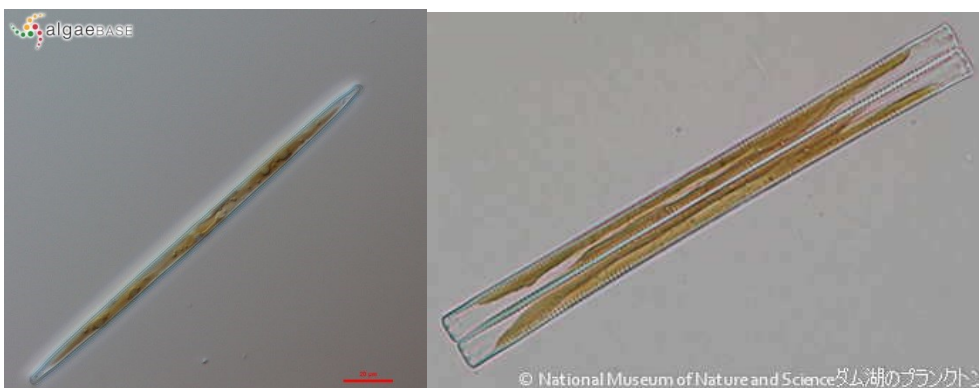
Rozsivky zaživa

Araphidní (rozsivky bez raphe)

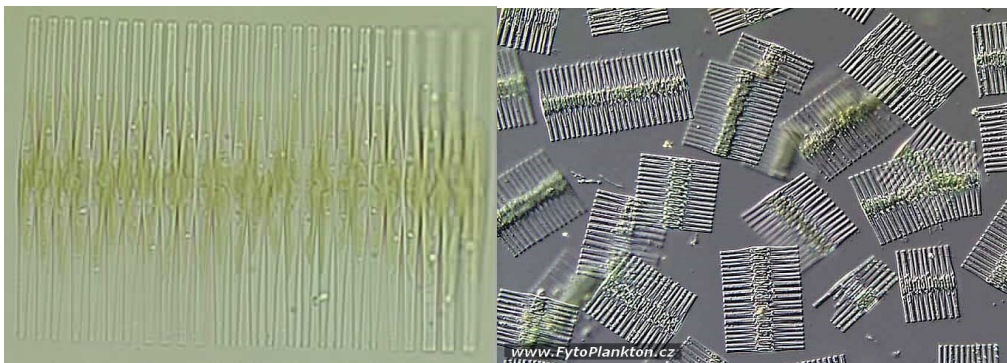
Diatoma



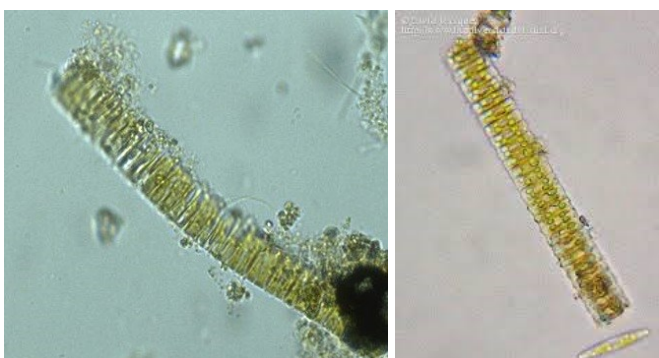
Ulnaria



Fragilaria crotonensis



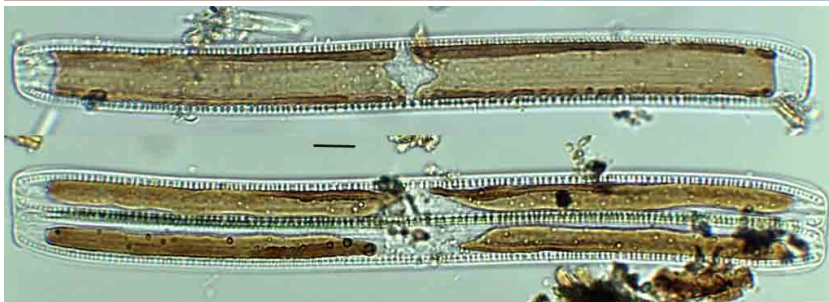
Fragilaria construens



Rozsivky zaživa

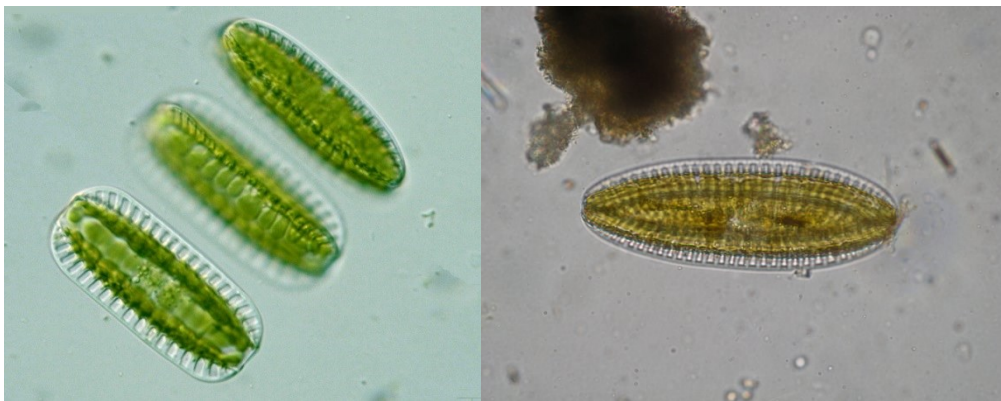
Rozsivky s kanálkovou raphe

Nitzschia



Nitzschia sigmaidea

Surirella



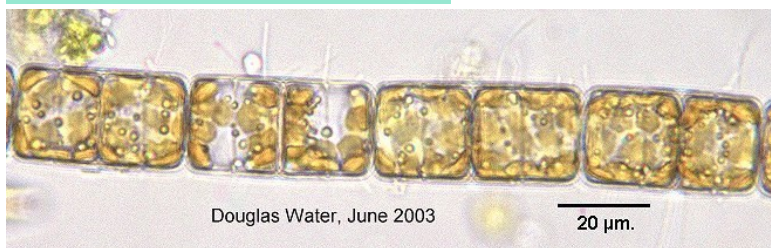
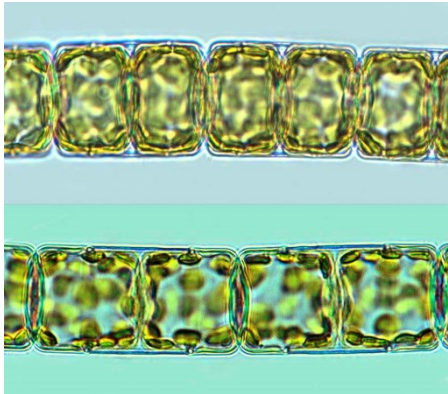
Cymatopleura



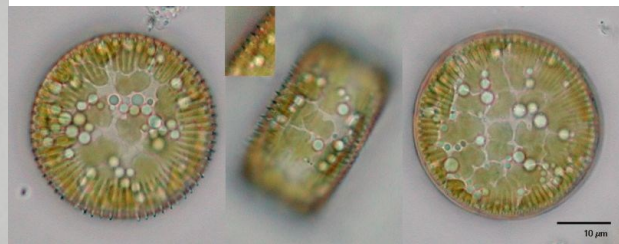
Rozsivky zaživa

Centrické rozsivky

Melosira



Cyclotella



Aulacoseira

