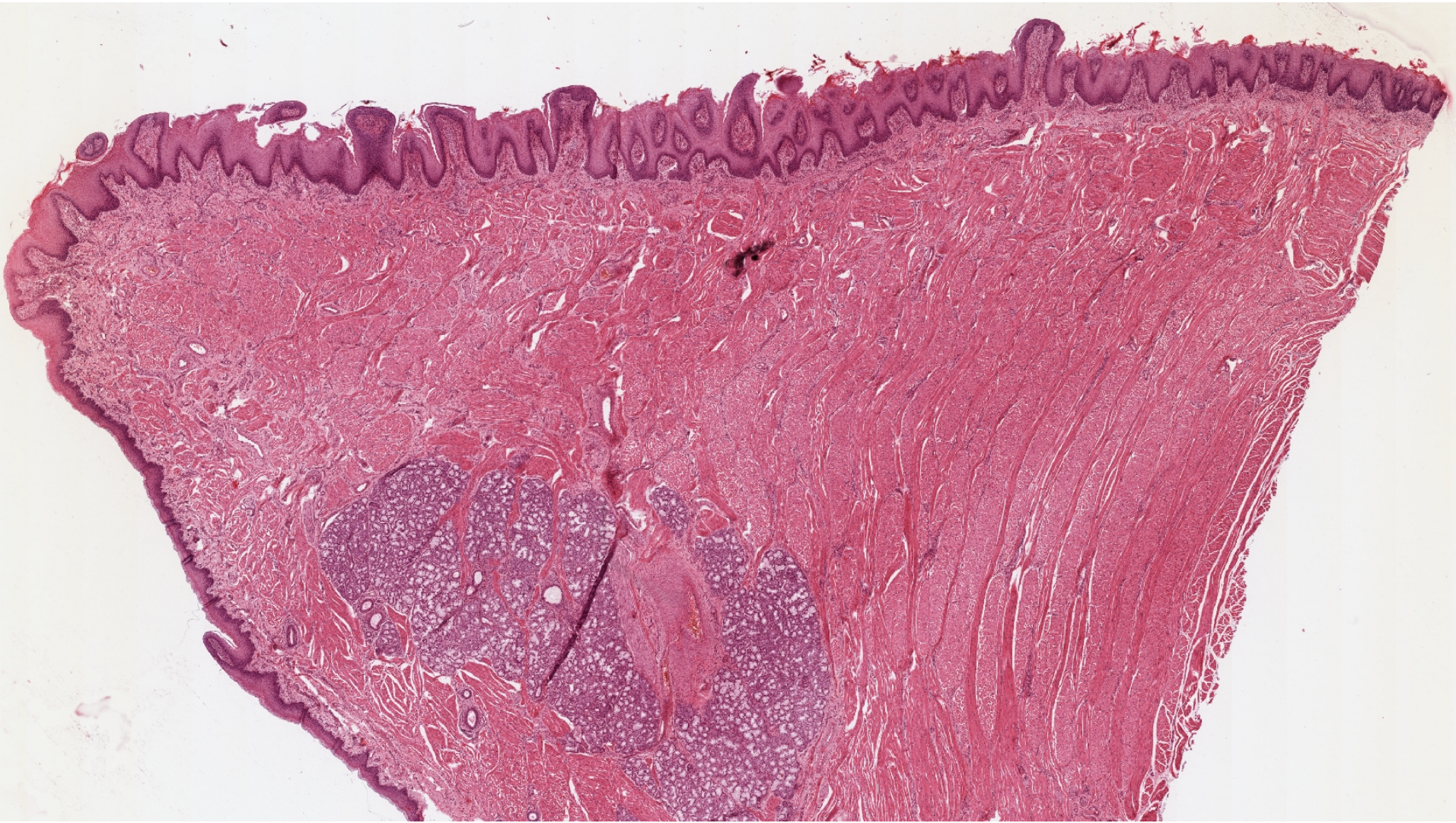




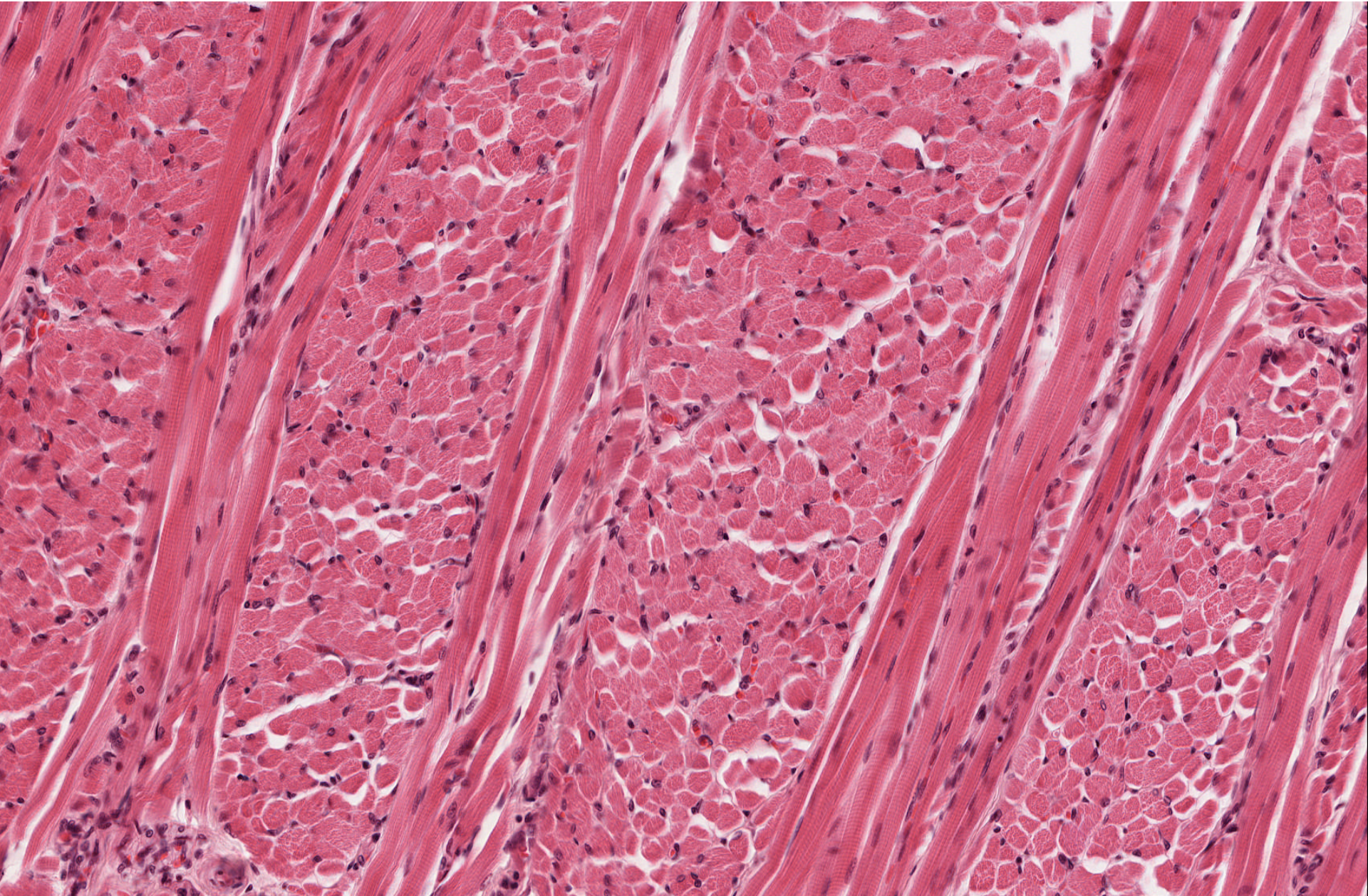
Svalová tkáň

- Kosterní svalovina – rhabdomyocyty
- Hladká svalovina – leiomyocyty
- Srdeční svalovina - kardiomyocyty

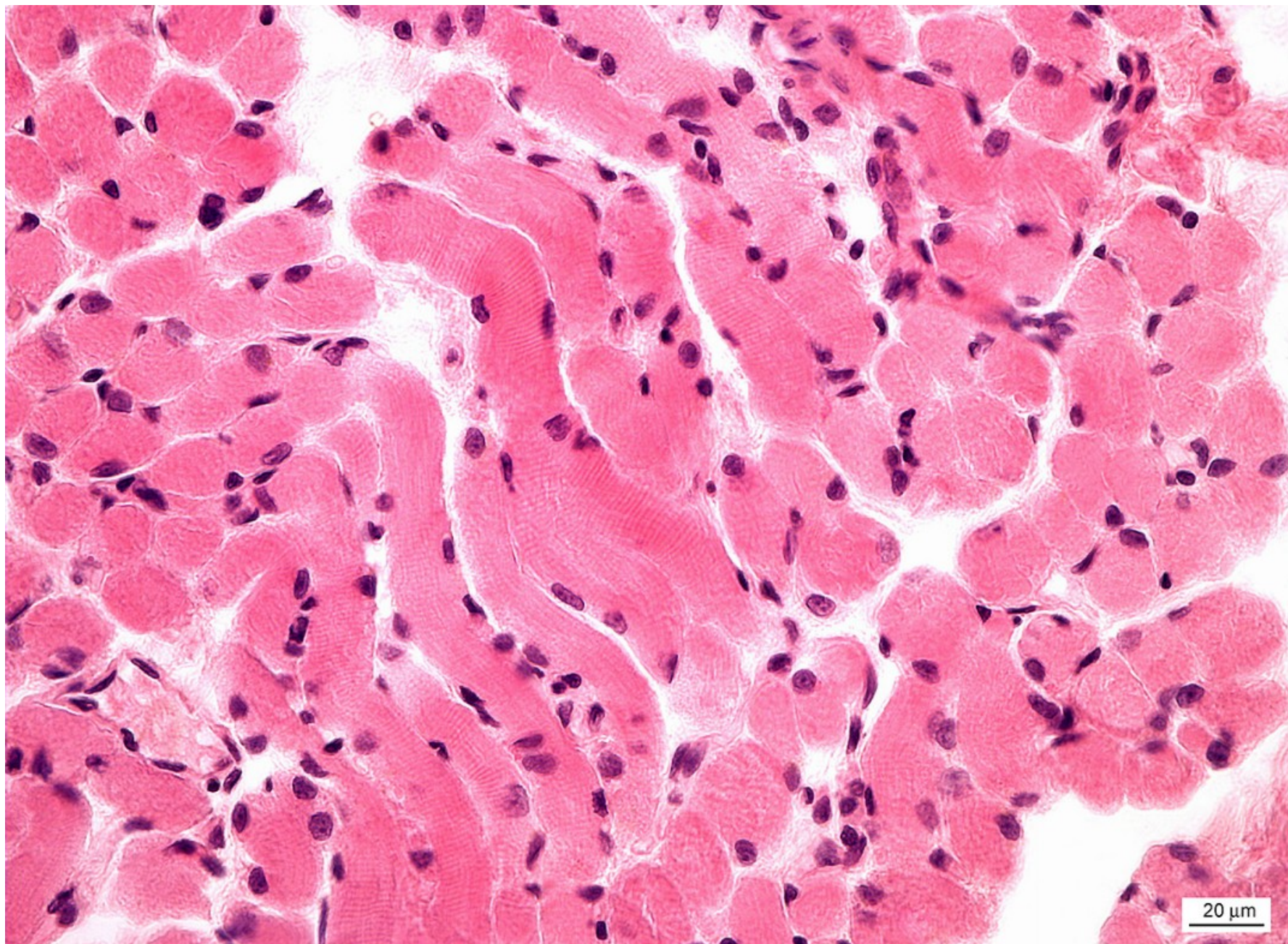
Kosterní svalovina – Apex linguae



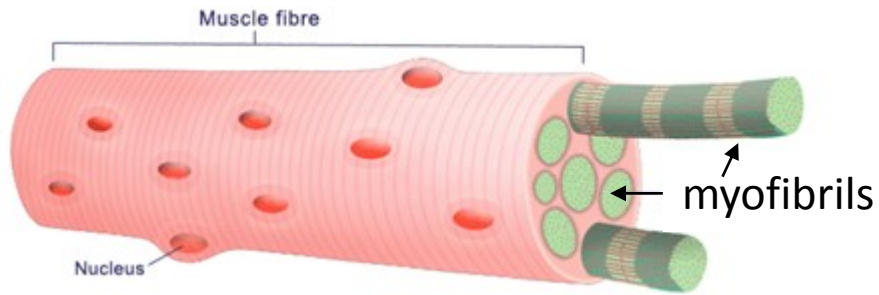
Kosterní svalovina – Apex linguae



Kosterní svalovina (příčně pruhovaná)



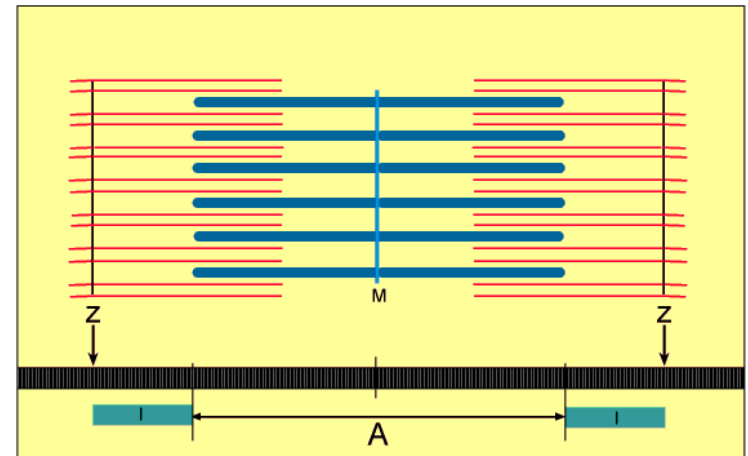
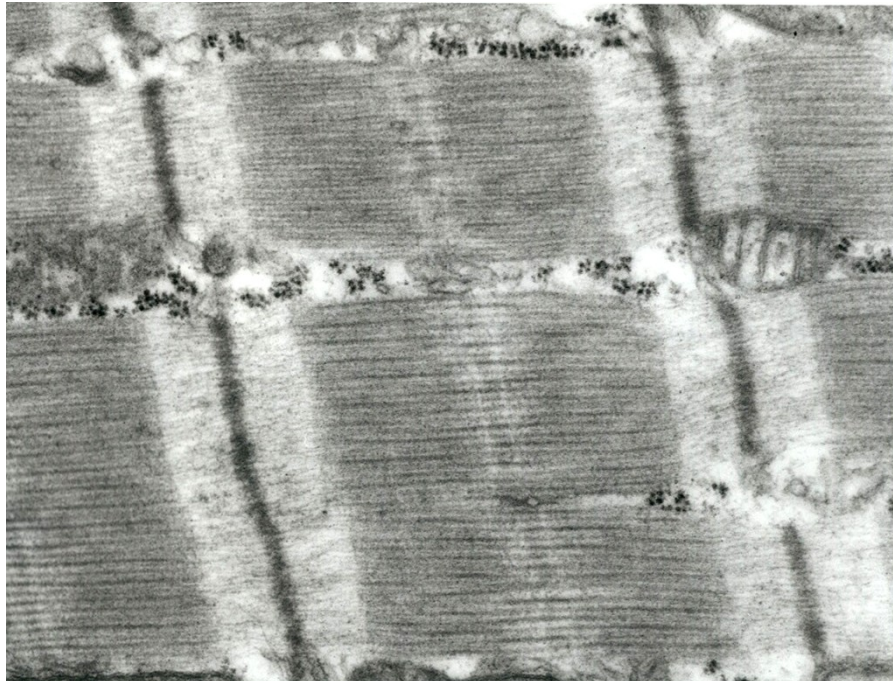
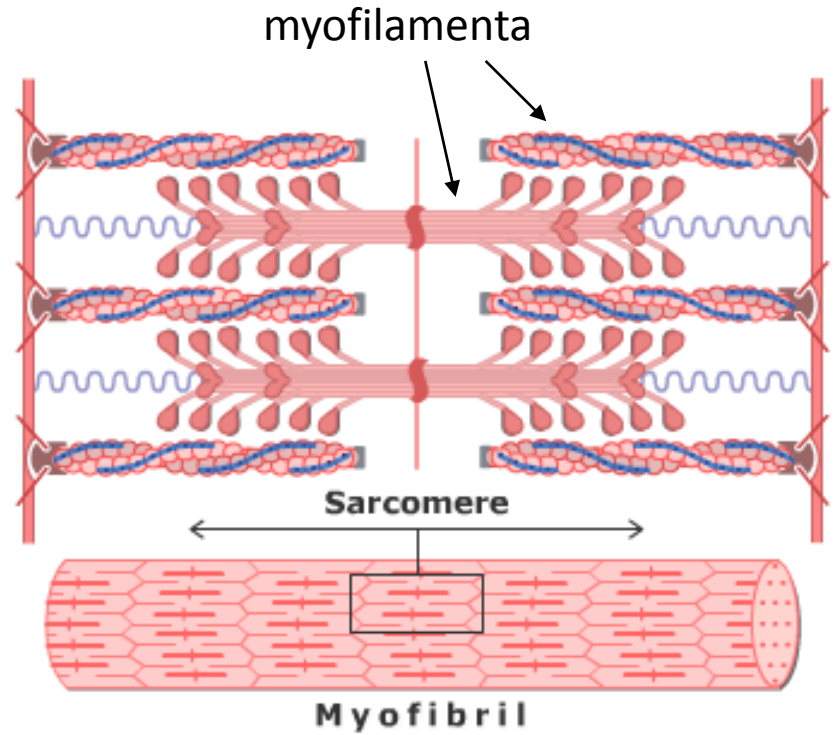
Rhabdomyocyt



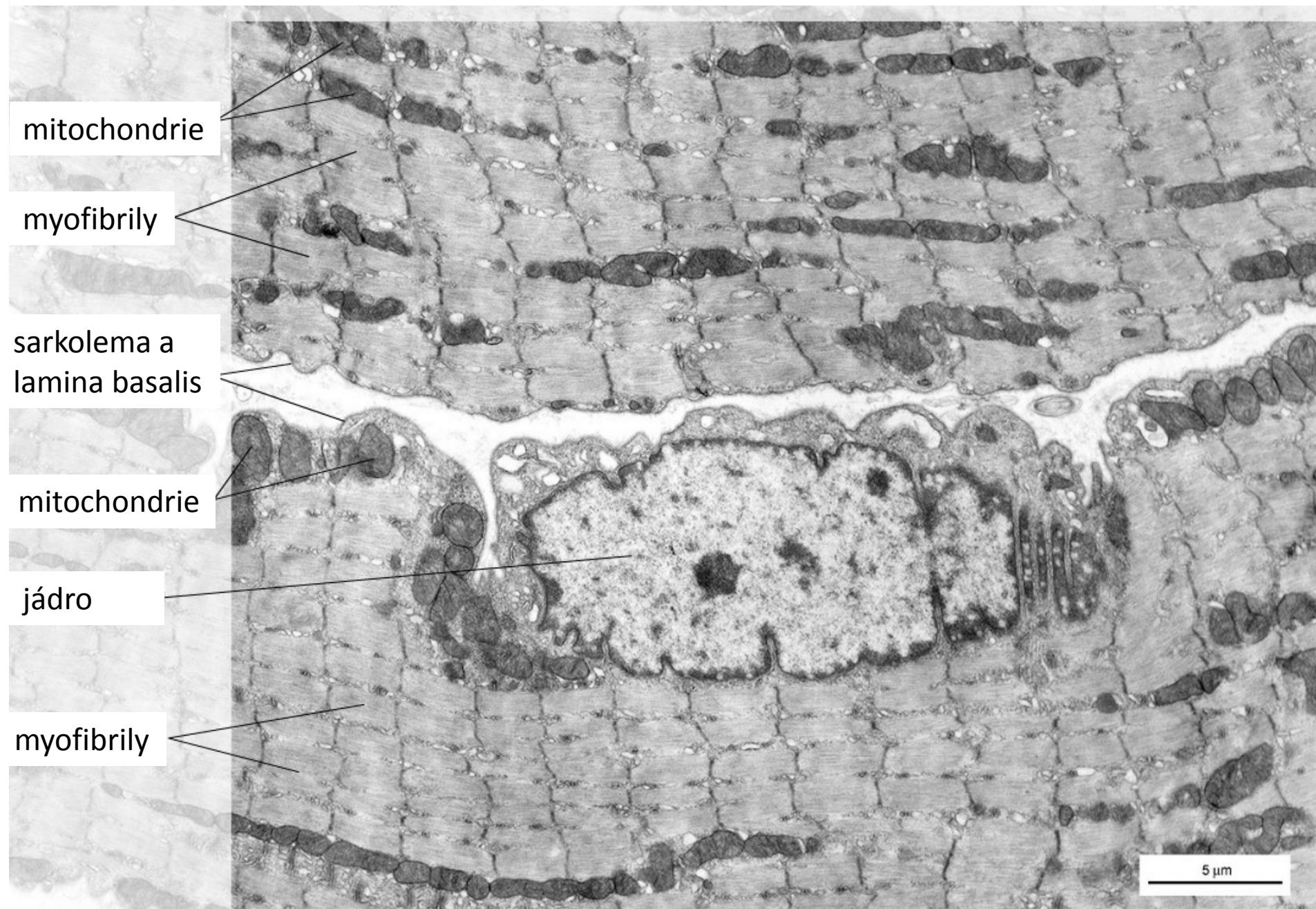
I-proužek
Z

A-proužek
H-M-H

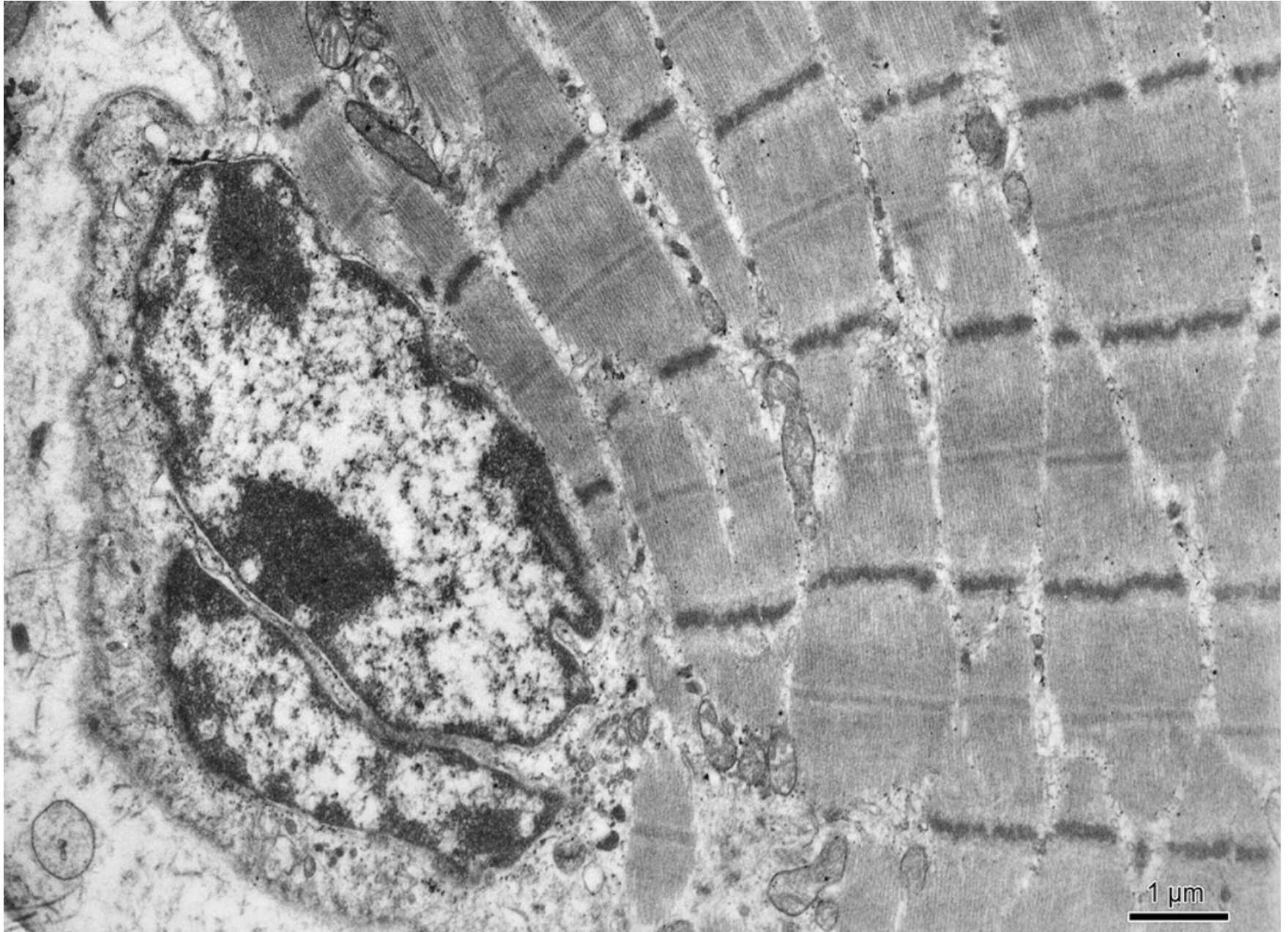
I-proužek
Z



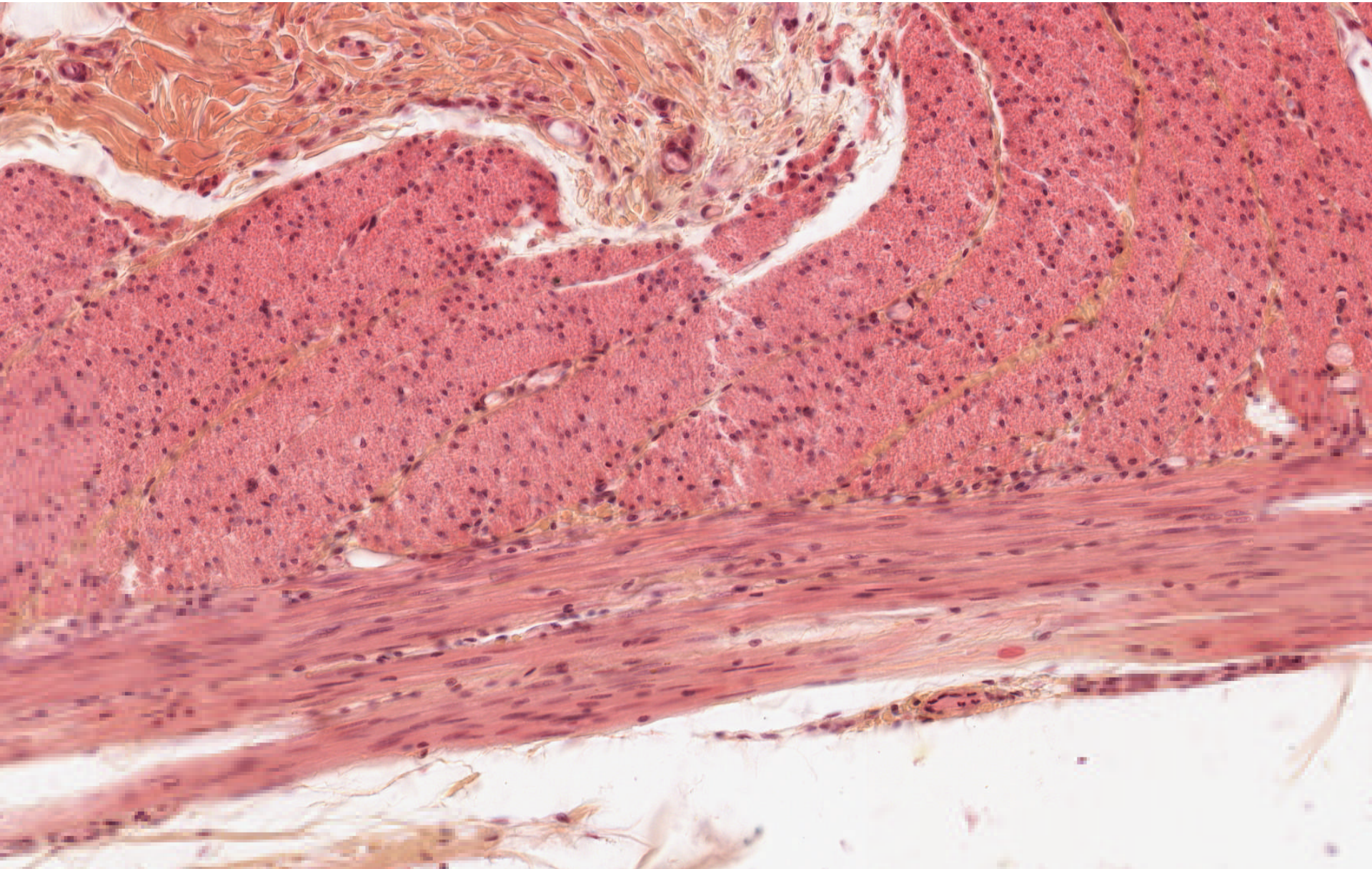
Rhabdomyocyty – okohybné svaly krasy (TEM)



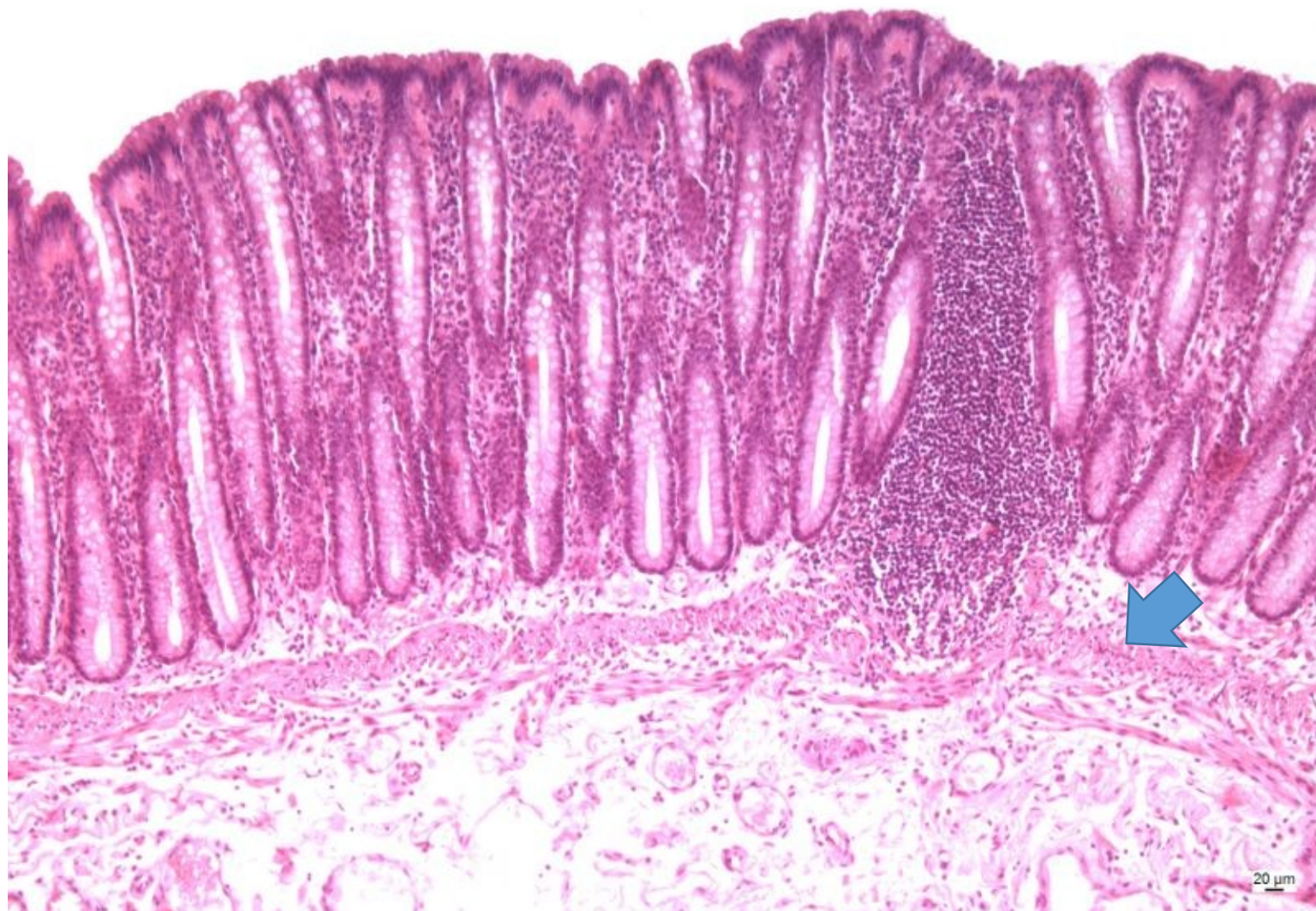
Rhabdomyocyt



Hladká svalovina – Intestinum tenue



Hladká svalovina – Intestinum crassum



Hladká svalovina – Intestinum crassum

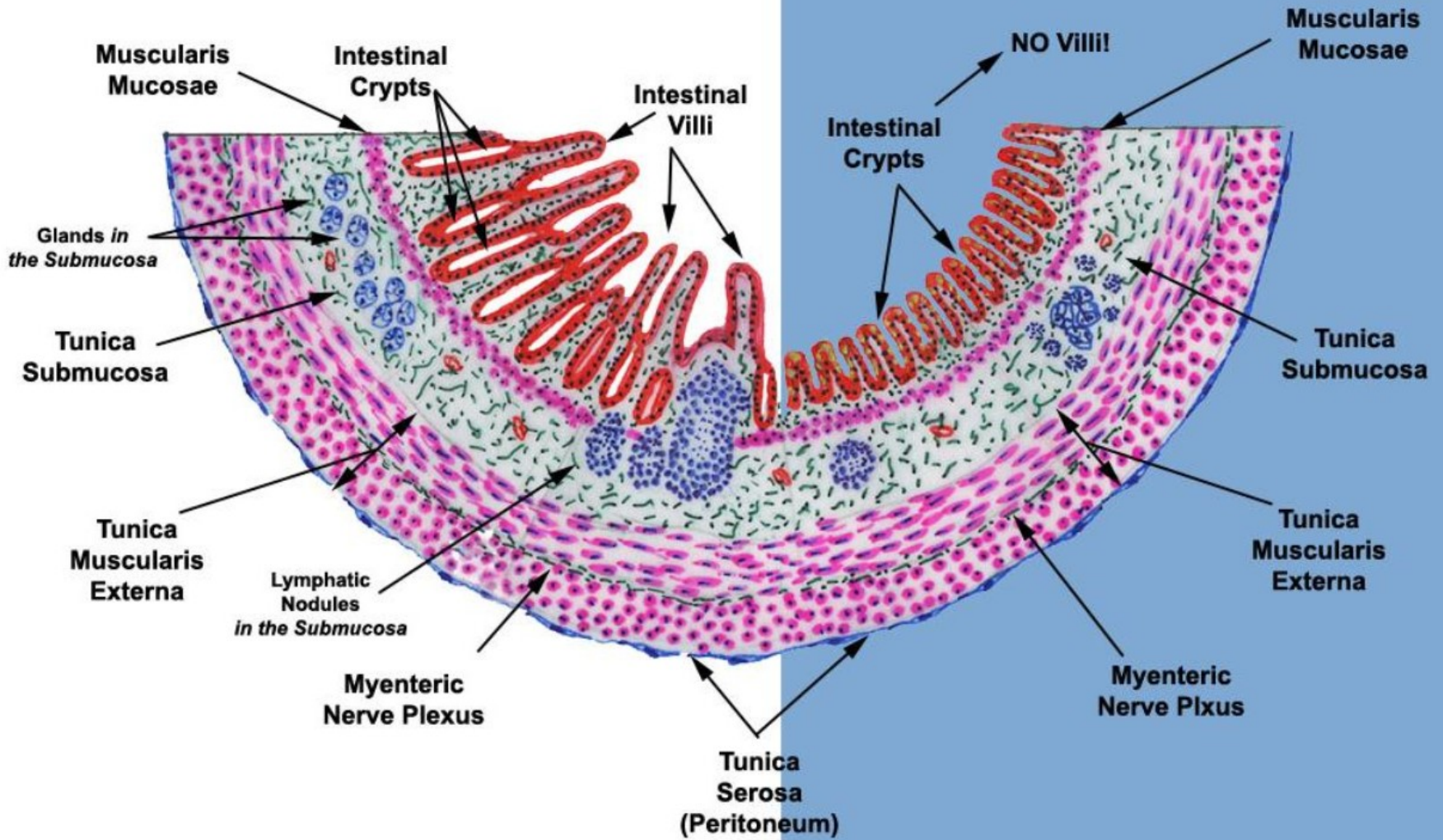


Appendix vermiformis

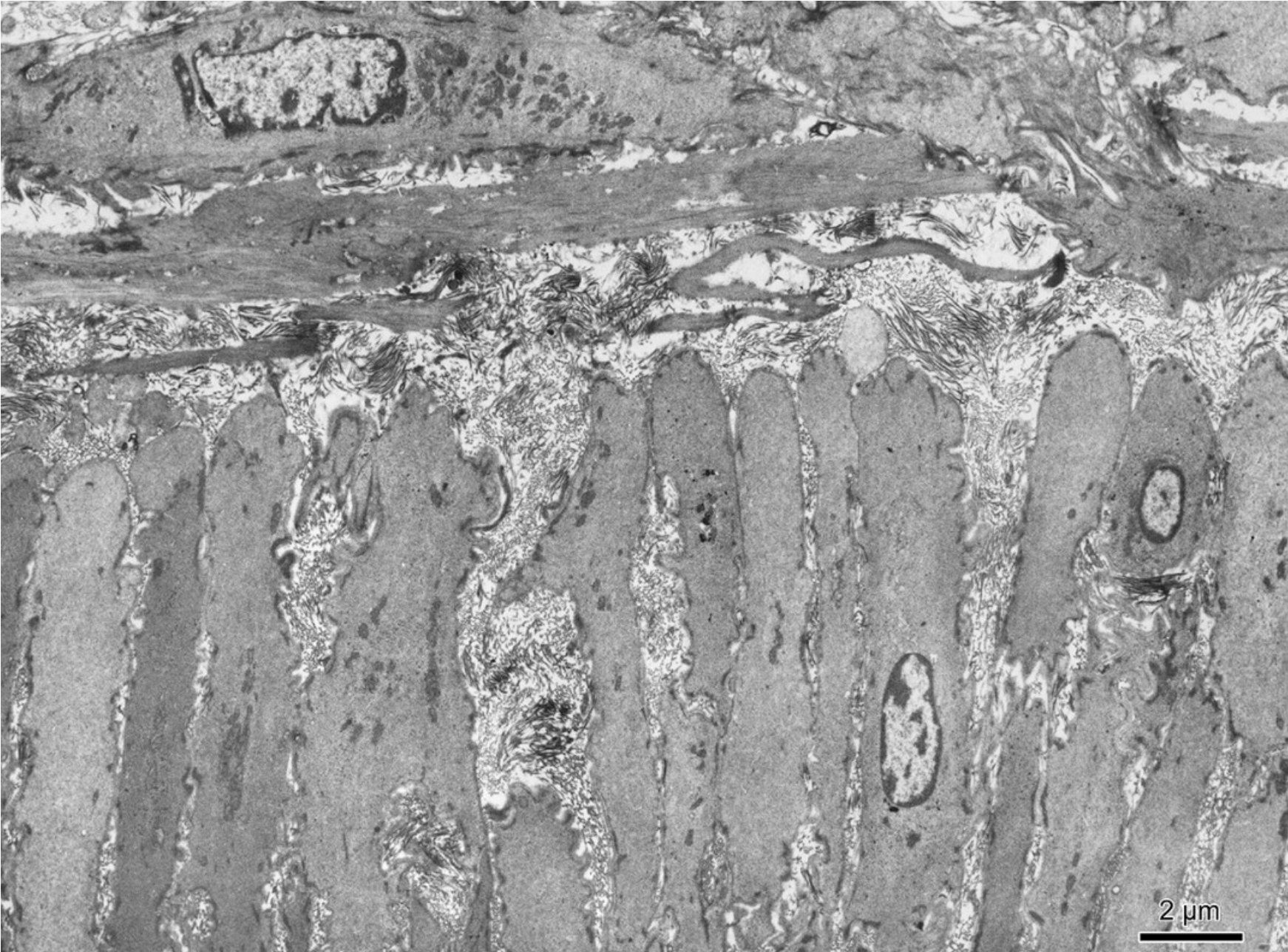


SMALL INTESTINE

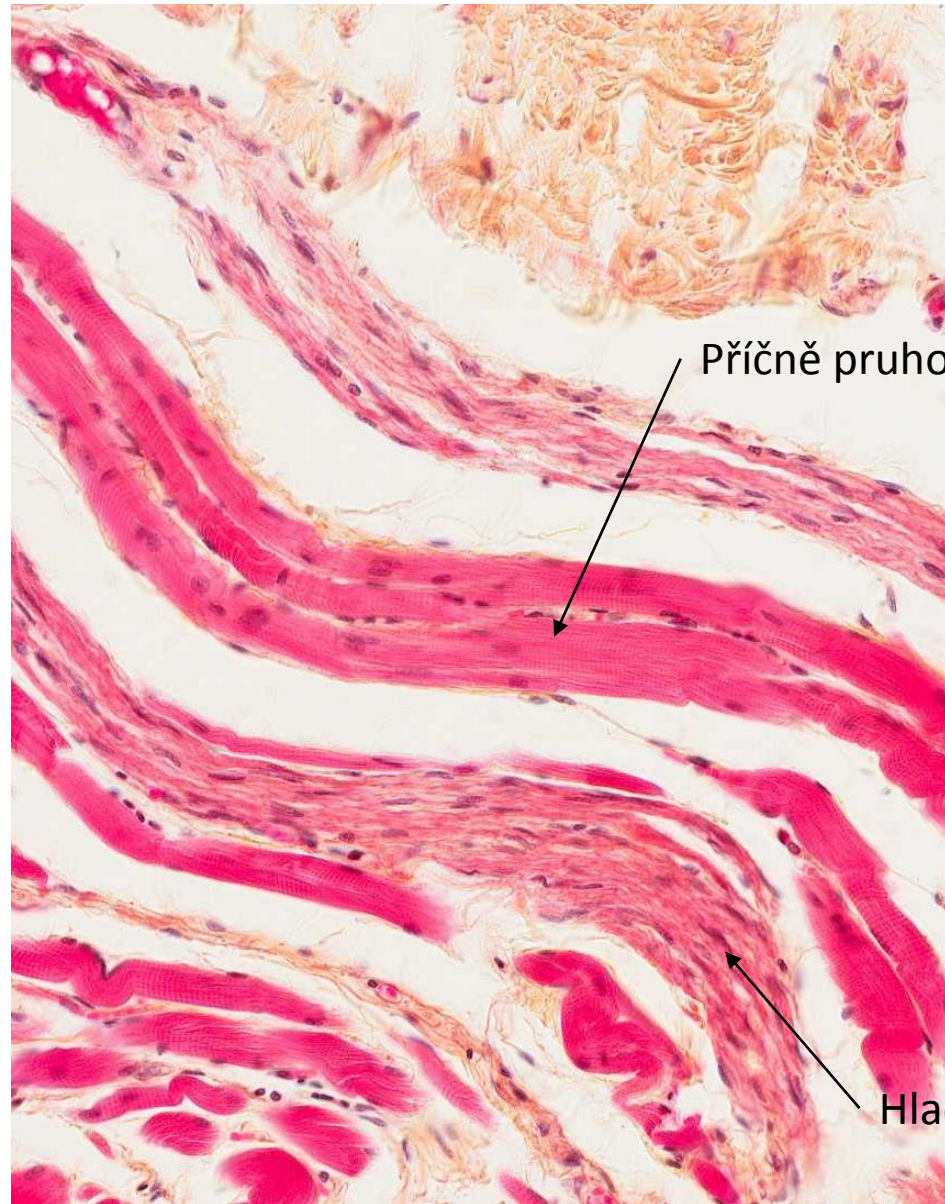
LARGE INTESTINE



Leiomyocyt



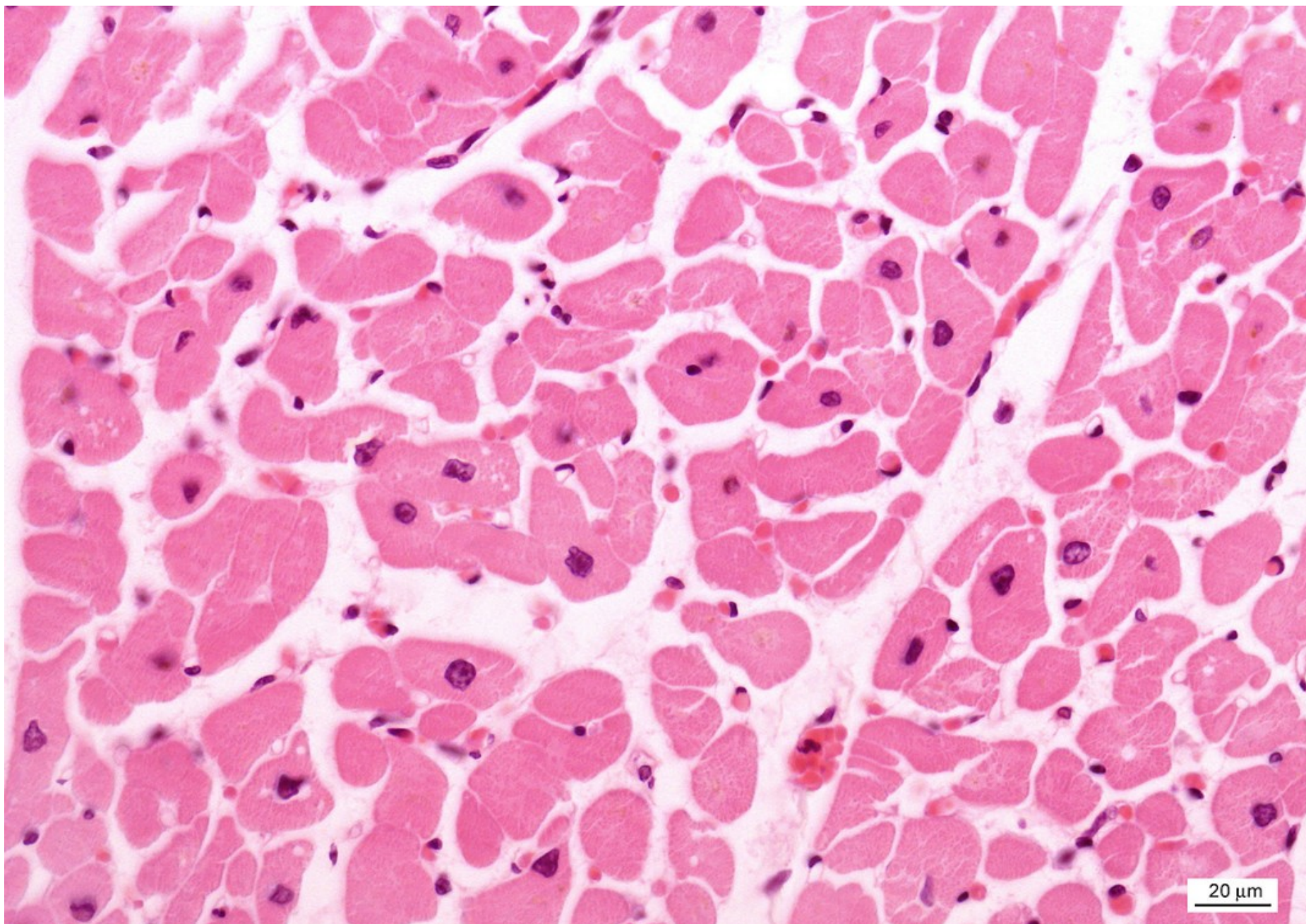
Podélný řez



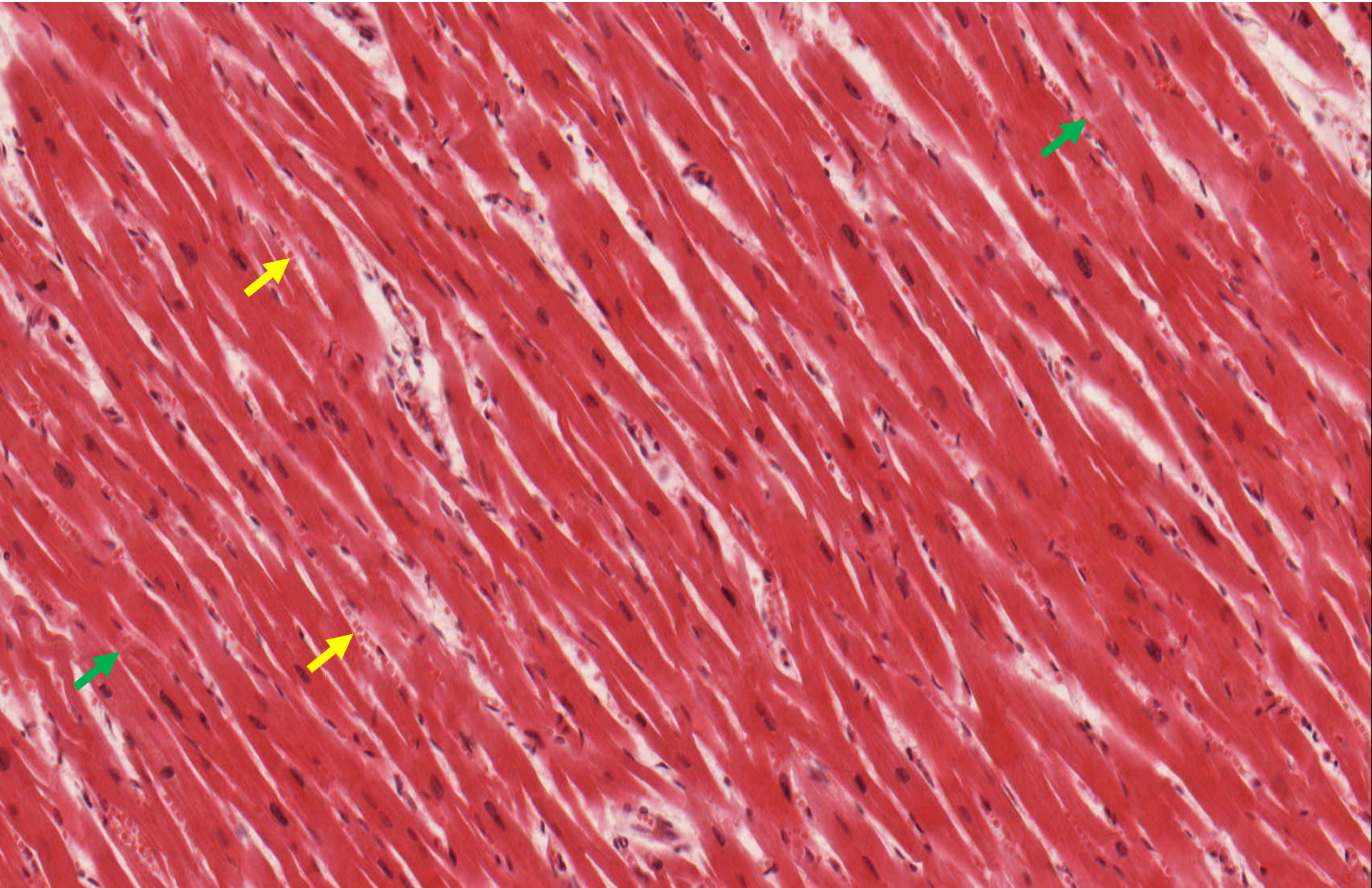
Příčný řez



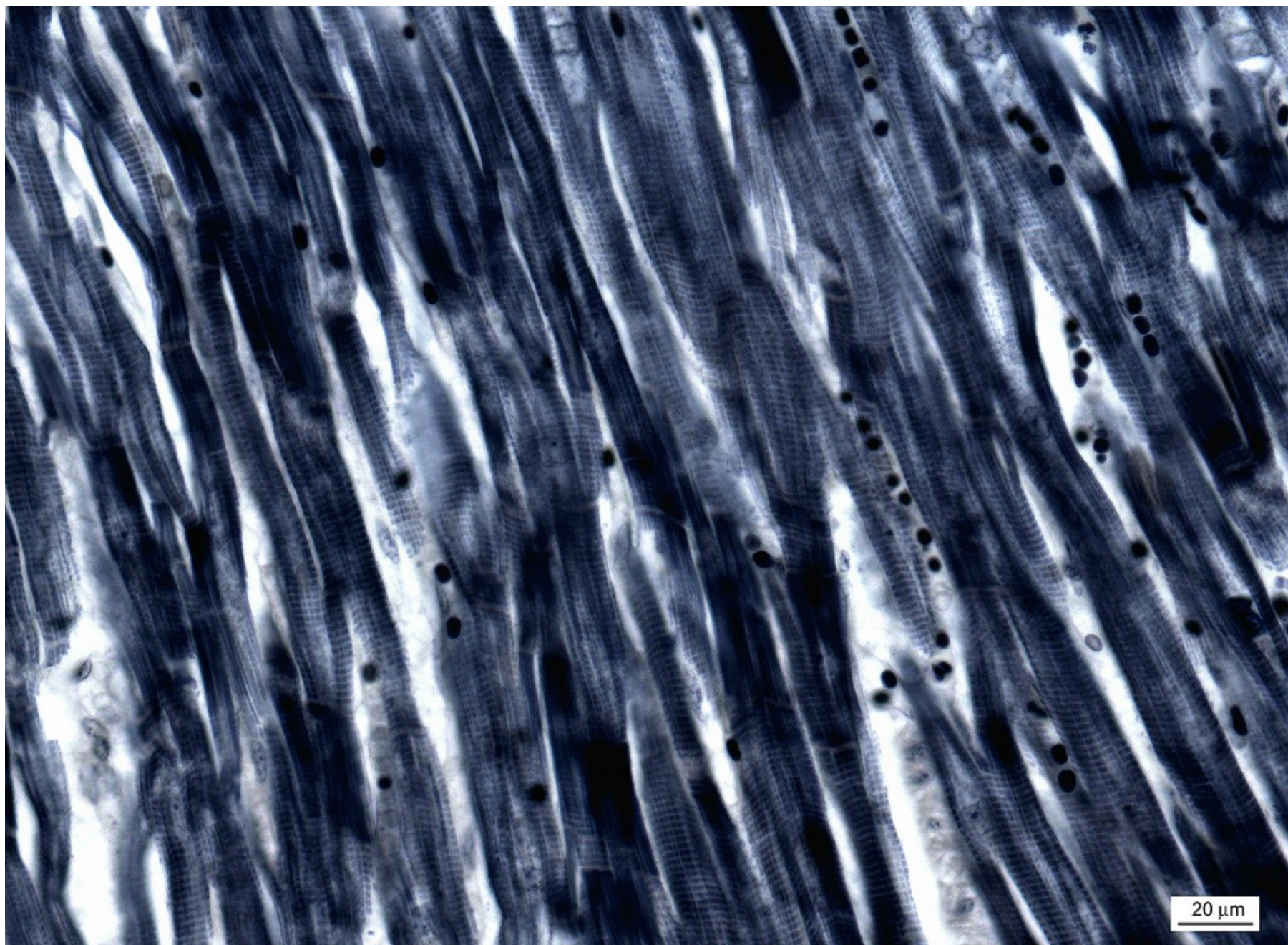
Srdeční svalovina (HE) – příčný řez



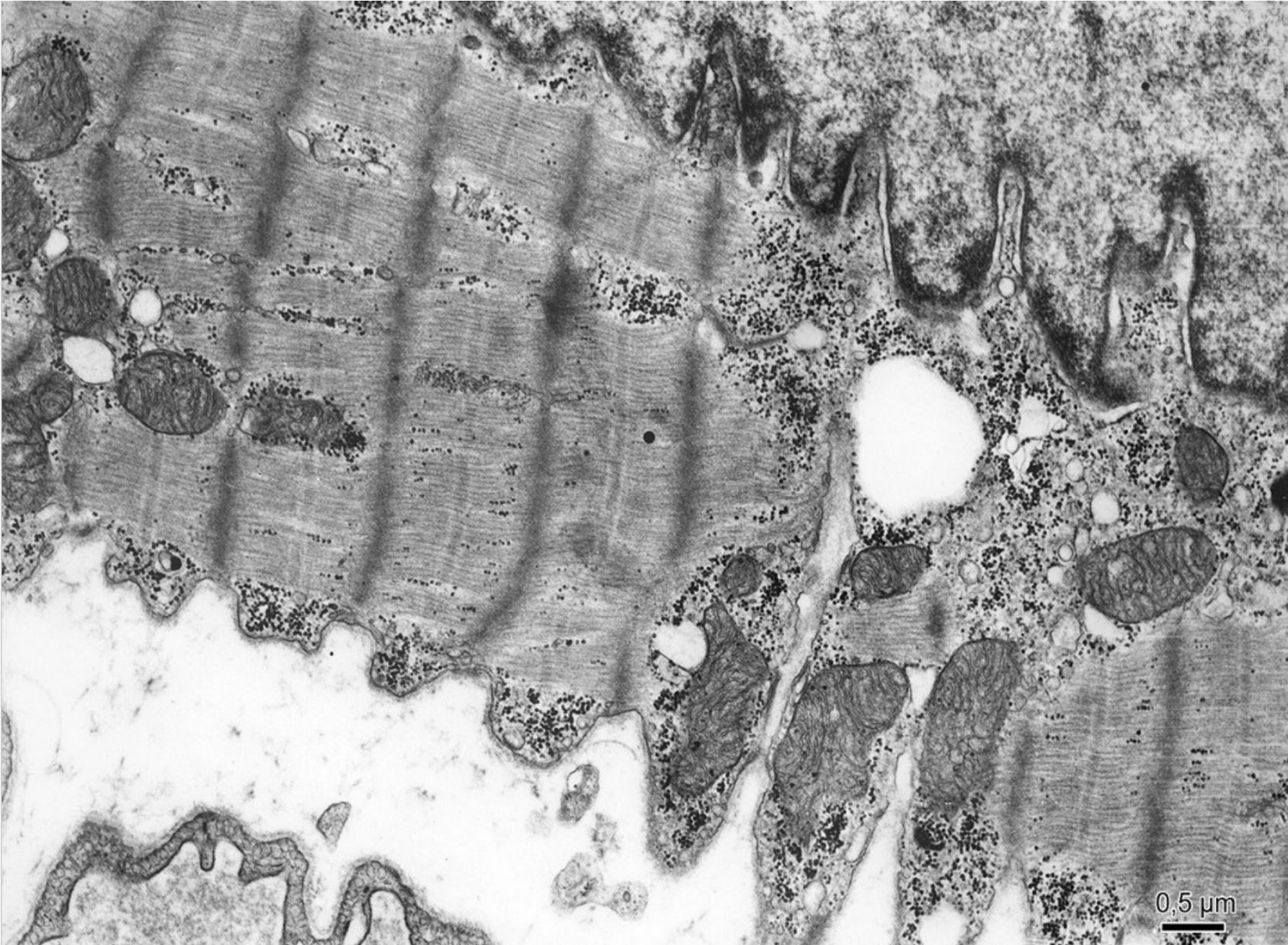
Srdeční svalovina (HE) – podélný řez



Srdeční svalovina (Heidenhein)



Kardiomyocyt



Preparáty: **Svalová tkáň**

Kosterní svalovina (2. Apex linguae)

Hladká svalovina (17. Intestinum crassum)

Srdeční svalovina (64, 65. Myocardium)

Atlas EM:

Rhabdomyocyt (52)

Leiomyocyt (54)

Kardiomyocyt (22, 53)