

GIT, kidney

21.4.2022

Oesophagus, stomach

1. H.S.S. in the slides from 8. a 16. week i.u.d. find oesophagus. How did you distinguish it? What is the second tube beside oesophagus?
2. H.S.S. Compare stomach of 10-weeks-old embryo with the adult one. Describe the differences?
3. T.E.18d, G.G. HH28, M.M. E12: Compare layers of stomach of these slides with the human slides from the question 2, and write down, what is the most similar slide.



Intestine:

4. H.S.S. slides set of small intestine: When the diameter of lumen gets increased so the villi are not filling it completely? When you can find for the first time the layer of smooth muscle cells? In the slide of large intestine from 10th week can you see all the layers? How the lumen differs from the small intestine in 11th week?
5. Danio Rerio 5d: Can you find all the intestinal layers? Describe, what you can see.
6. GG HH10: What layers you can find in the primitive gut?

Liver:

7. H.S.S. set of slides: Find the portal triade and draw it. In what sample you cannot find it?
8. Compare the liver of H.S.S. 6th week iud and M.M. E12 and G.G. HH20. Are they similar? Should they be similar?
9. G.G. HH 20, 24, 26: Describe the morphological features of developing liver.

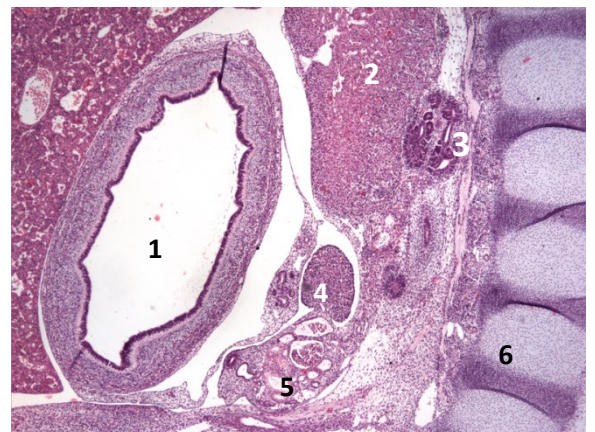
Pancreas:

10. Find the Langerhans islet on slides and count what number of cell are in it.
11. H.S.S. Judge if the slide from the 22nd week of iud is the more similar to younger or older embryo.
12. Compare T.E, 27D and M.M. E14,5D slides with HSS 22nd week and adult tissue and decide what is more similar stage. What is the most important difference between rodent and human morphology of pancreas?

Kidney

13. H.S.S What are the numbered organs? On the slide from the 6th week iud. Find similar set of organs and compare the size of particular organs.

- 1
- 2
- 3
- 4
- 5
- 6



14. G.G. Find kidney at HH 20,24, 26, 28 and try to decide what developmental stage they are. Is there any difference between cranial and caudal part?

15. M.M. What is the developmental stage of kidney of E12.

16. T.E. What is the difference of adult H.S.S. kidney and a T.E. 27d (before the birth)?



Adrenals, urinary tract

17. HSS: Decide, whether the layers of 14th and 16th week of iud are more similar to adult adrenals or the 7th week old embryo.

18. HSS What are the clusters of highly hematoxylin stained cells in the 14th week embryo?

19. T.E. 27D What kind of epithelium we can see in the bladder of this embryo? Compare it with the stomach nearby.

20. What is the difference between ureter and uretra – label the scheme parts.

