

Nádory prostaty

Tomáš Kazda

tomas.kazda@mou.cz

Klinika radiační onkologie
MOÚ

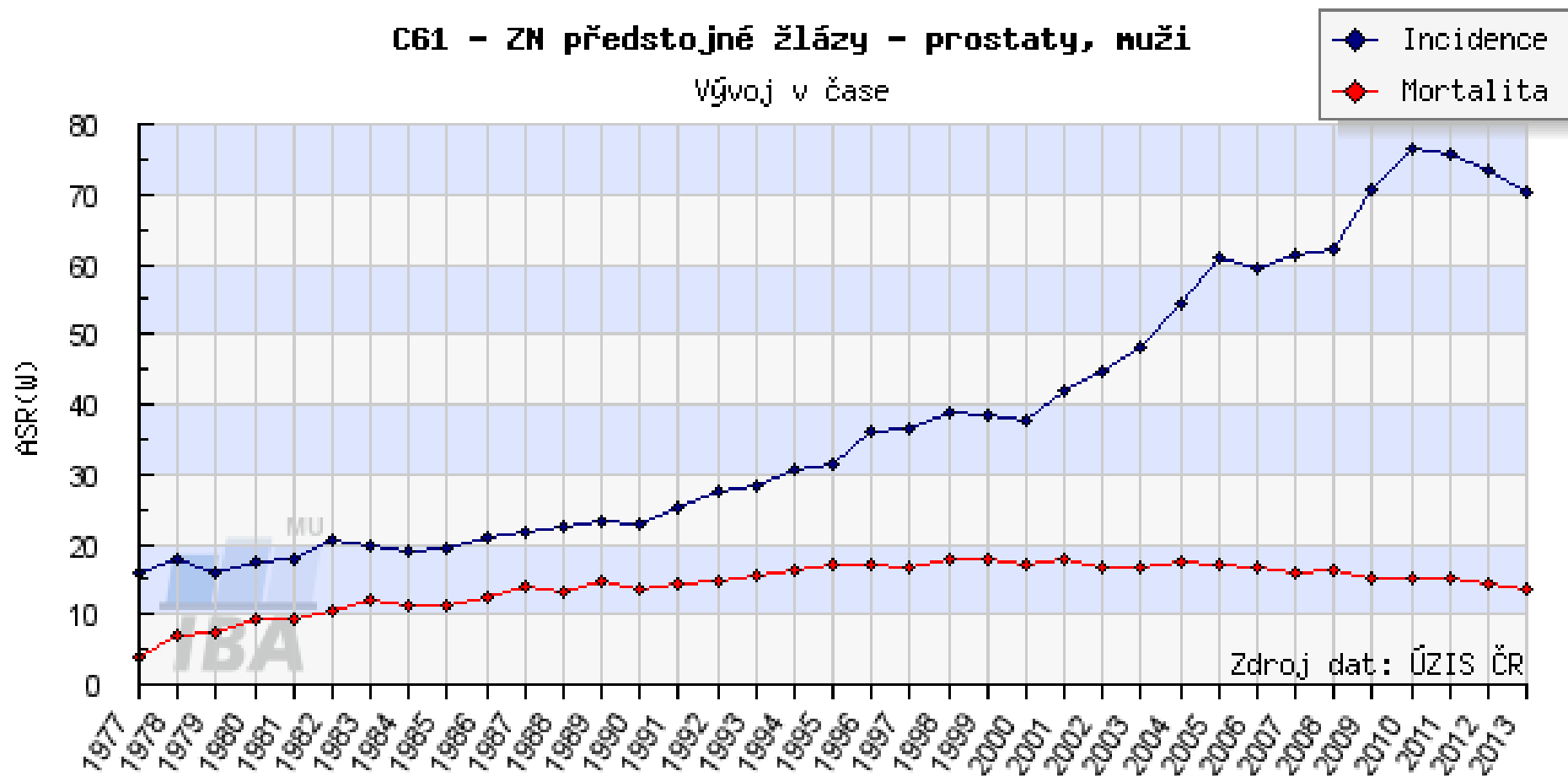
- epidemiologie – jak časté (incidence, prevalence, mortalita)
- etiologie – příčiny vzniku (faktory vnitřní, zevní)
- symptomatologie
- diagnostika
- klasifikace (TNM), histologie
- léčba – kurativní, adjuvantní, paliativní, neoadjuvantní
 - operace, radioterapie, chemoterapie, hormonoterapie, cílená léčba, imunoterapie, podpůrná léčba

Nádory prostaty

- nejčastější nádor 130/100,000, rostoucí incidence (PSA), screening? M 25/100,000
- prostatický specifický antigen – PSA
- nutná bioptická verifikace (TRUS), CT pánve, scintigrafie skeletu
- klasifikace dle rizika rekurence – T staging, PSA, Gleason skóre
- léčba lokalizovaného vs. generalizovaného onemocnění
- radikální prostatektomie vs. kurativní radioterapie – nežádoucí účinky
- watchful waiting, active surveillance
- nádory vysoce hormonálně dependentní – hormonoterapie
- orchiektomie – kastrace, antiandrogeny, LHRH agonisté
- progresse – kastračně rezistentní karcinom prostaty
- MTS – kosti
- nové léky – hormonoterapie nové generace, imunoterapie – vakcíny, alfa zářič Radium

C61 - ZN předstojné žlázy - prostaty, muži

Vývoj v čase



Zdroj dat: ÚZIS ČR

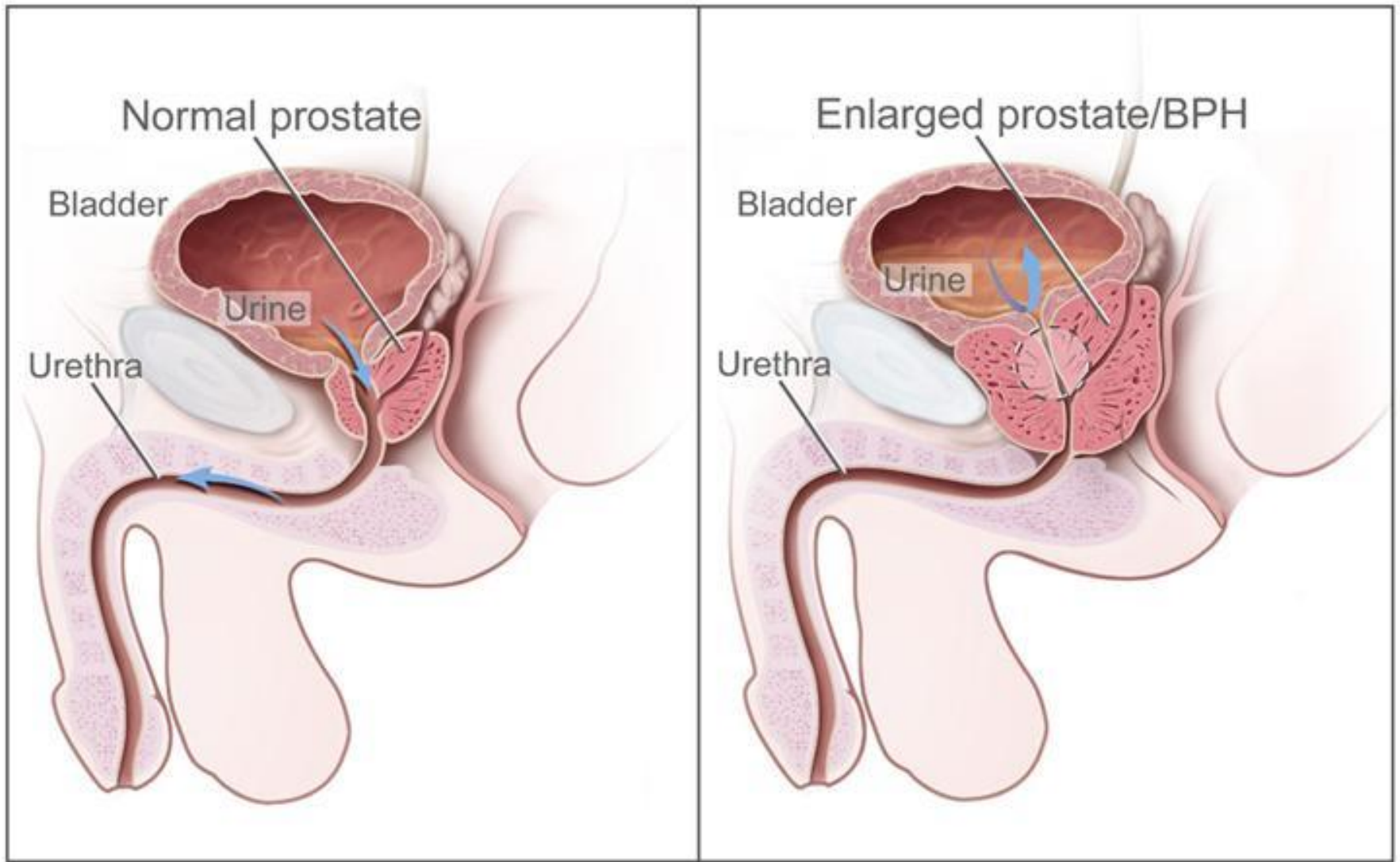
Analyzovaná data: N(inc)=113391, N(mor)=42291

<http://www.sv.od.cz>

Prostate Cancer Screening

Mata-analysis of 6 trials (n = 387,286)

- Odds of diagnosing prostate cancer = increased by 46%
- Odds of being in stage I = increased by 95%
- Impact on prostate cancer mortality = none
- Impact on overall survival = none



PROSTATE PROBLEMS ARE NO...

Frequency

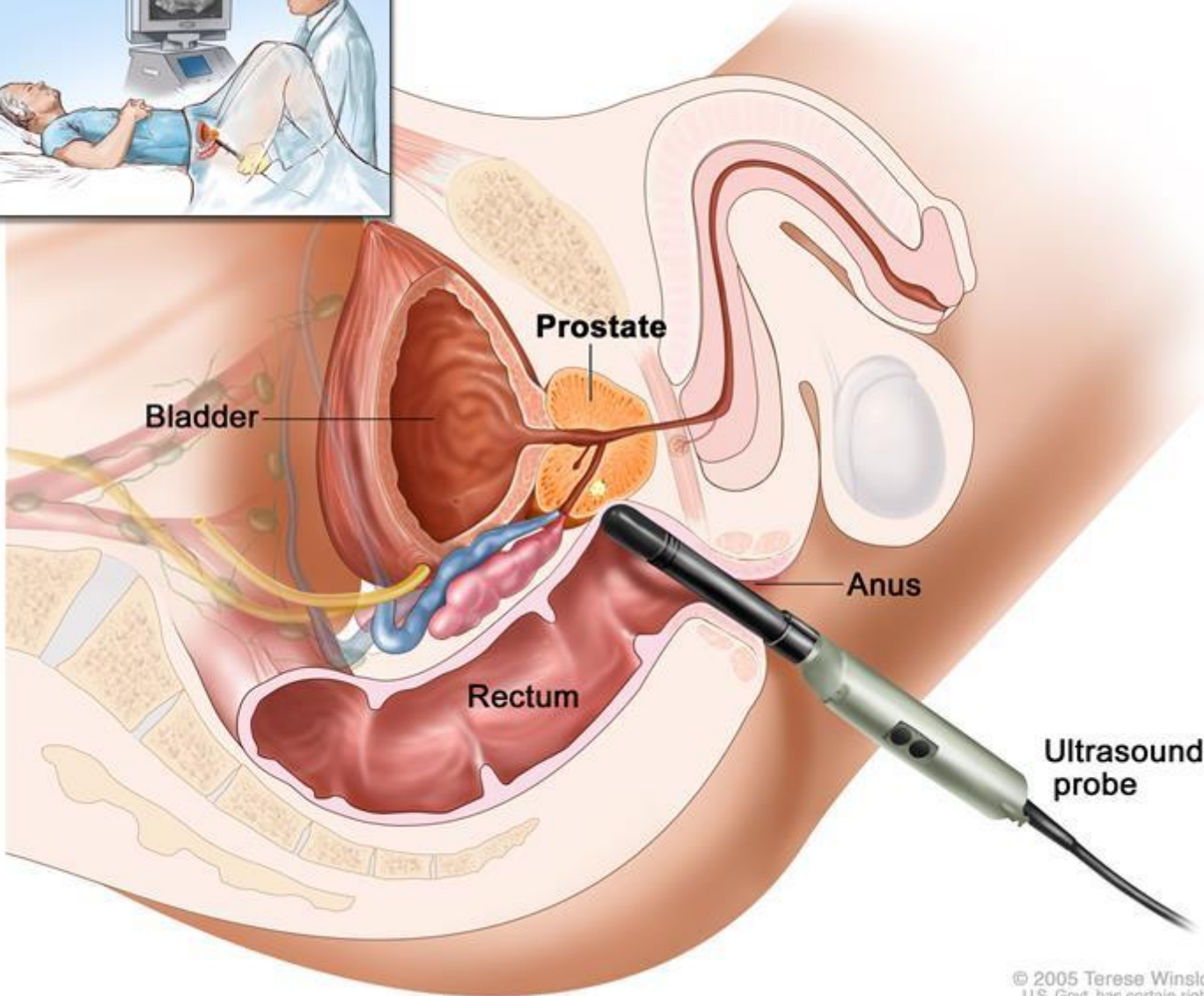
Urgency

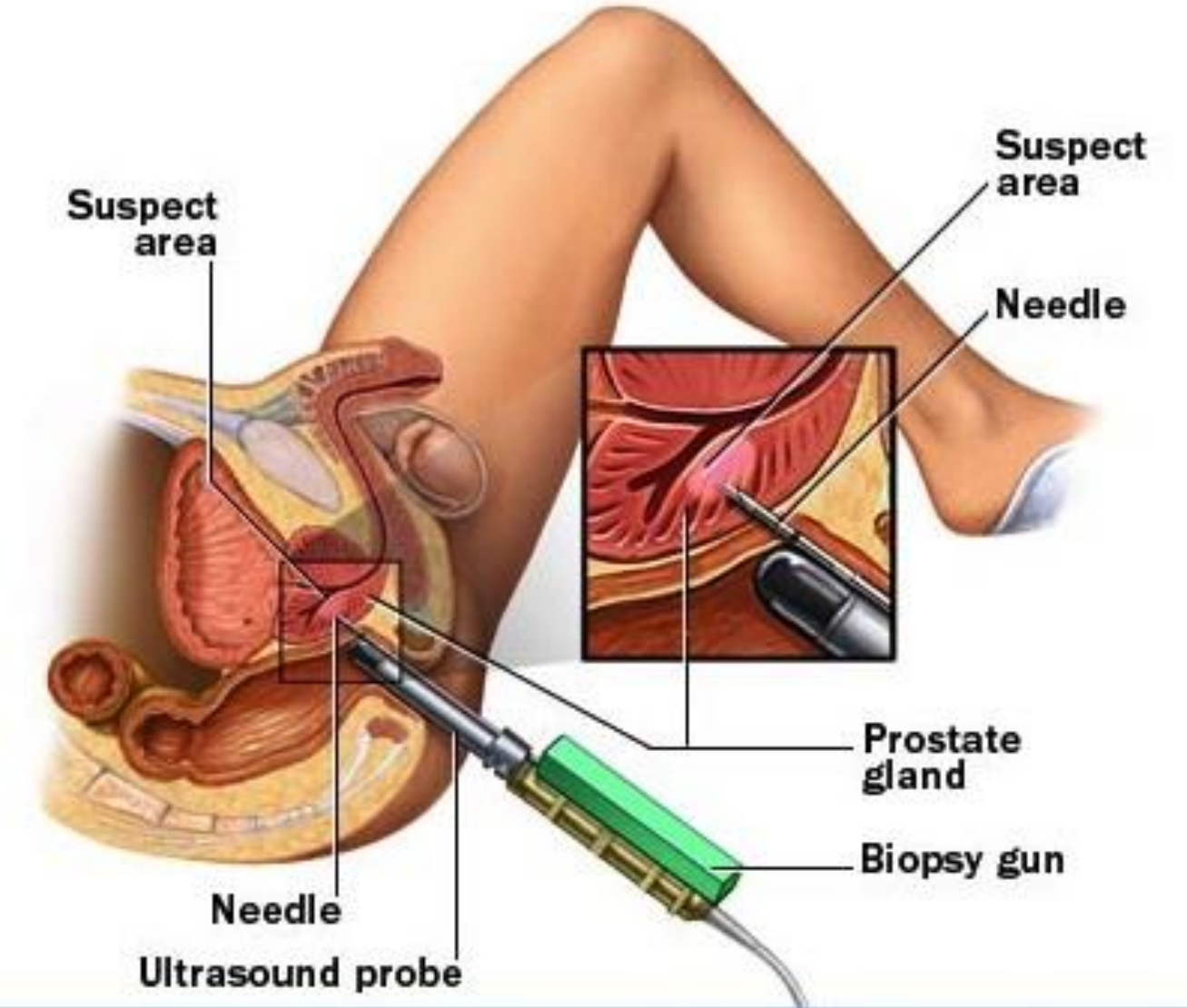
Nocturia

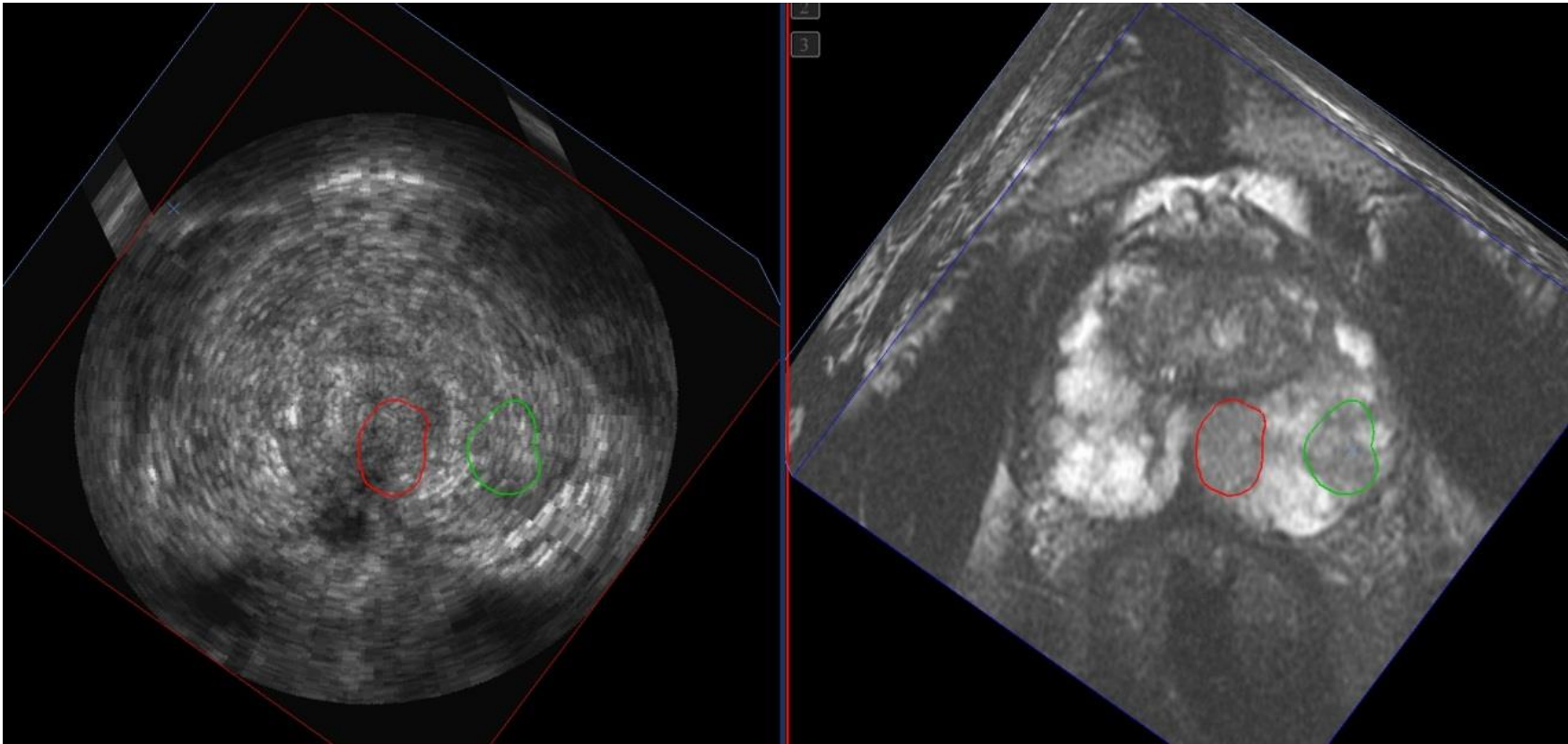
- Hematuria
- ↑ Infections
- ↓ Urinary Stream
- ↑ Residual Urine

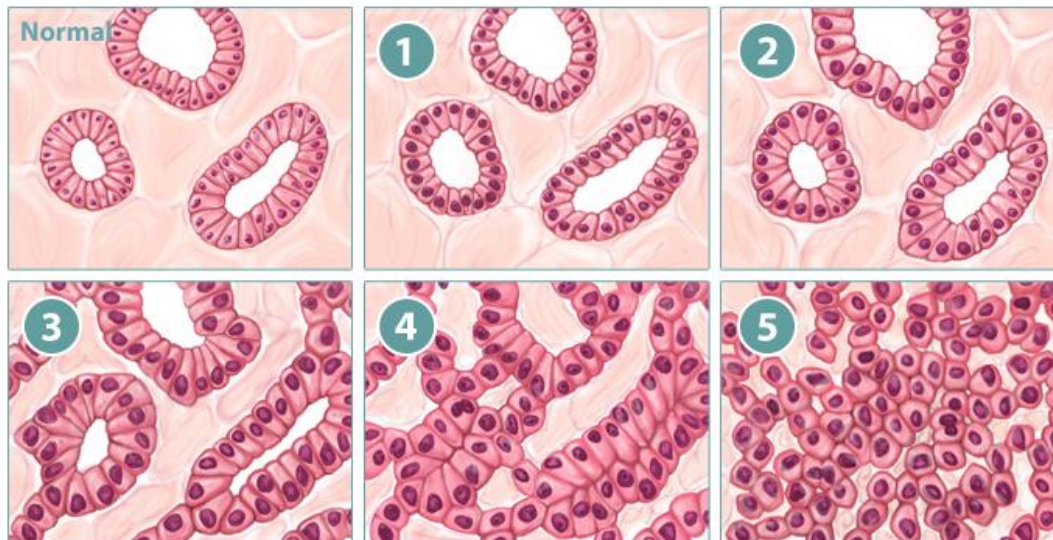
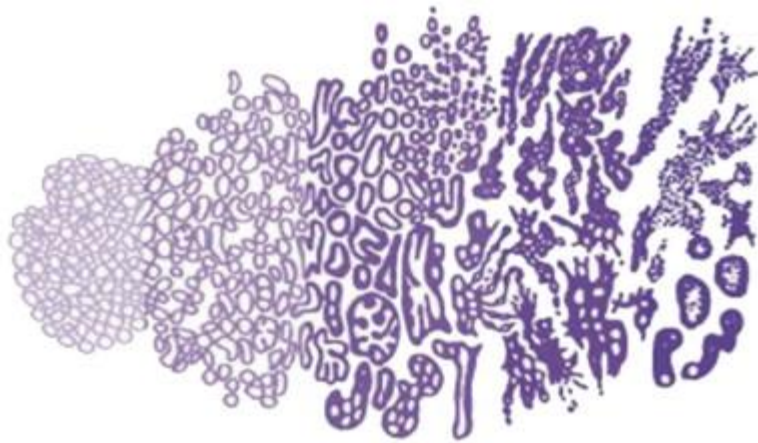


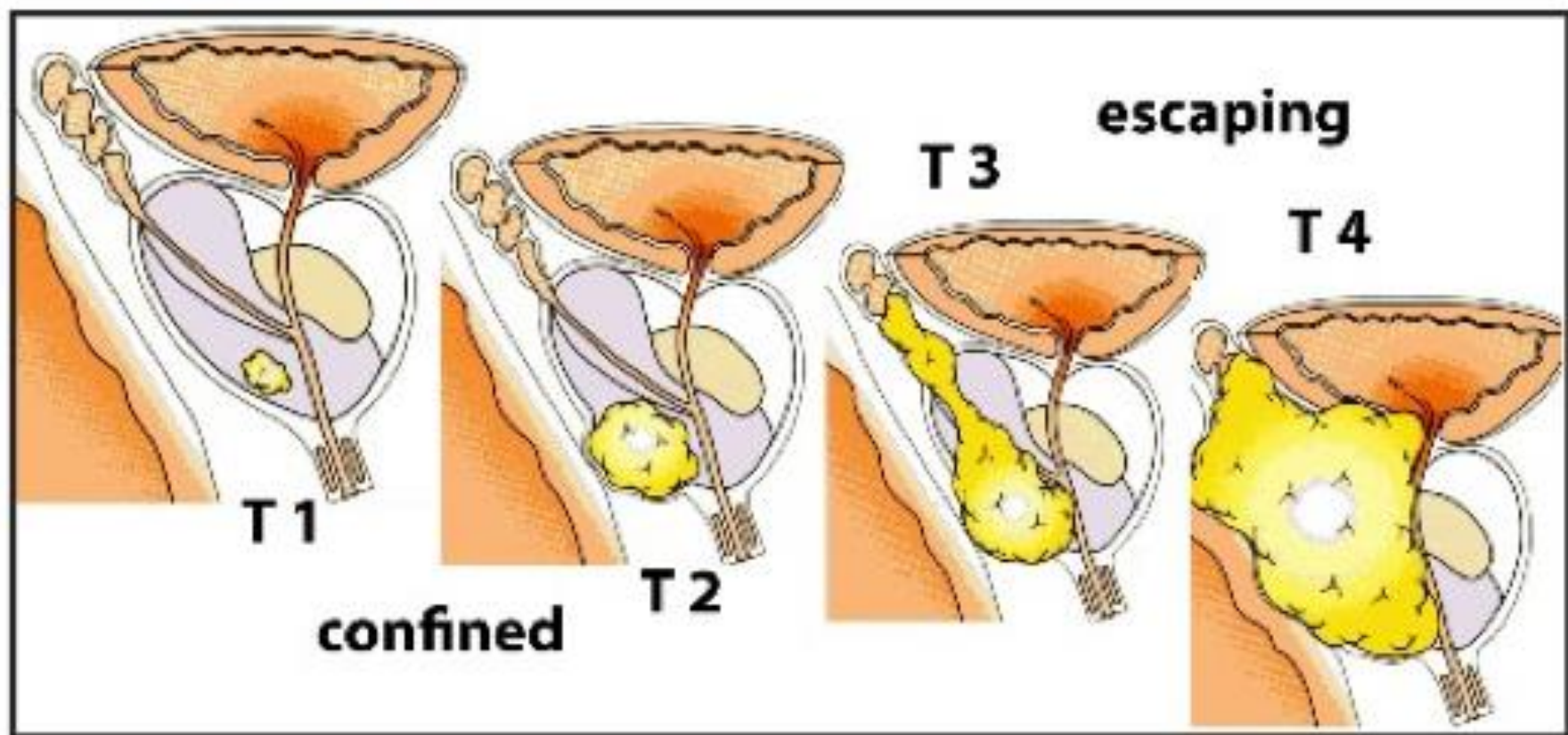
Transrectal Ultrasound









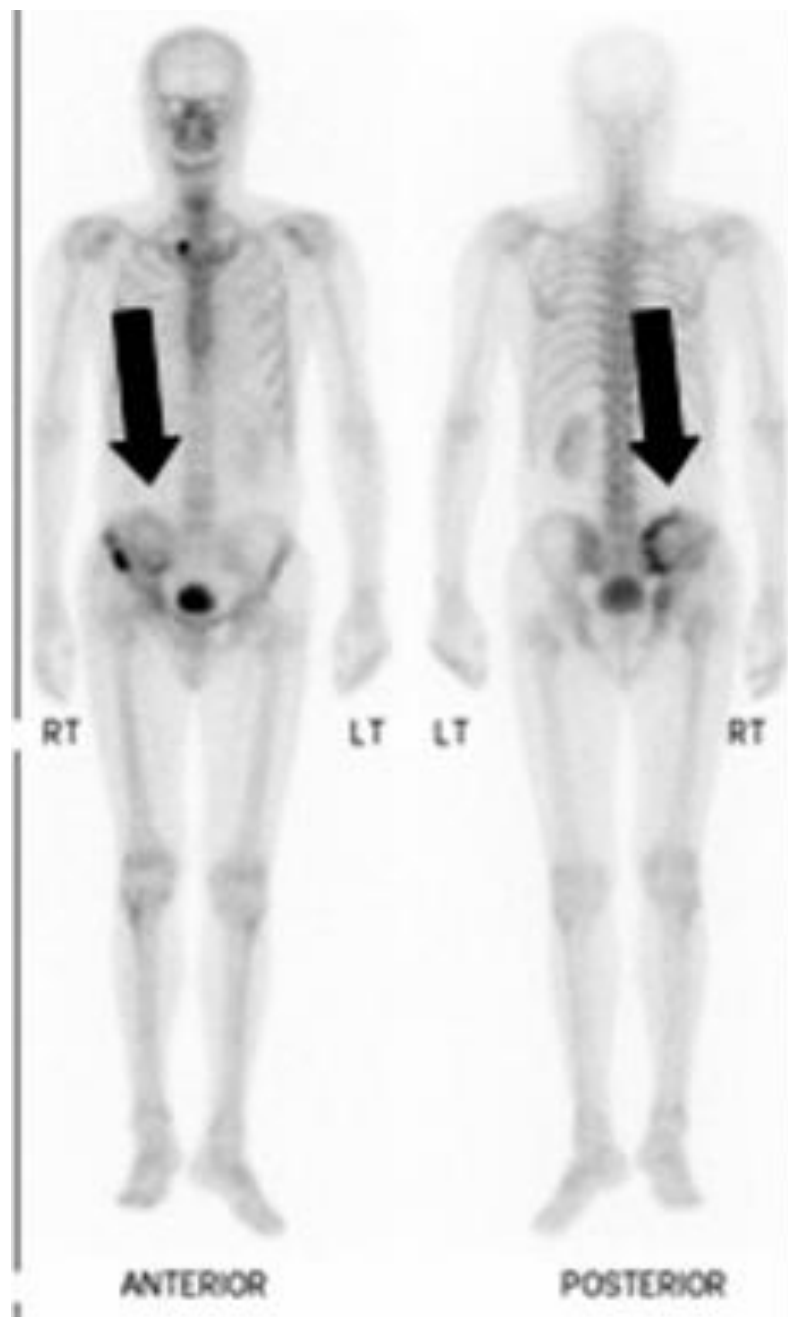


prostate cancer

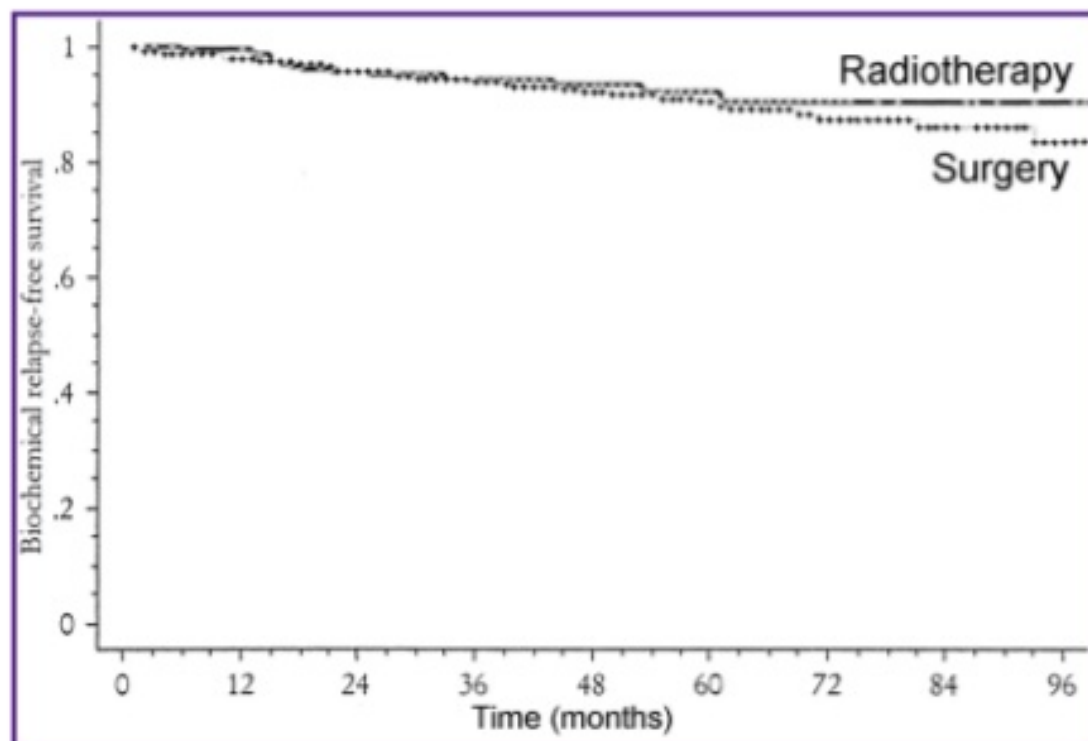
bladder



rectum

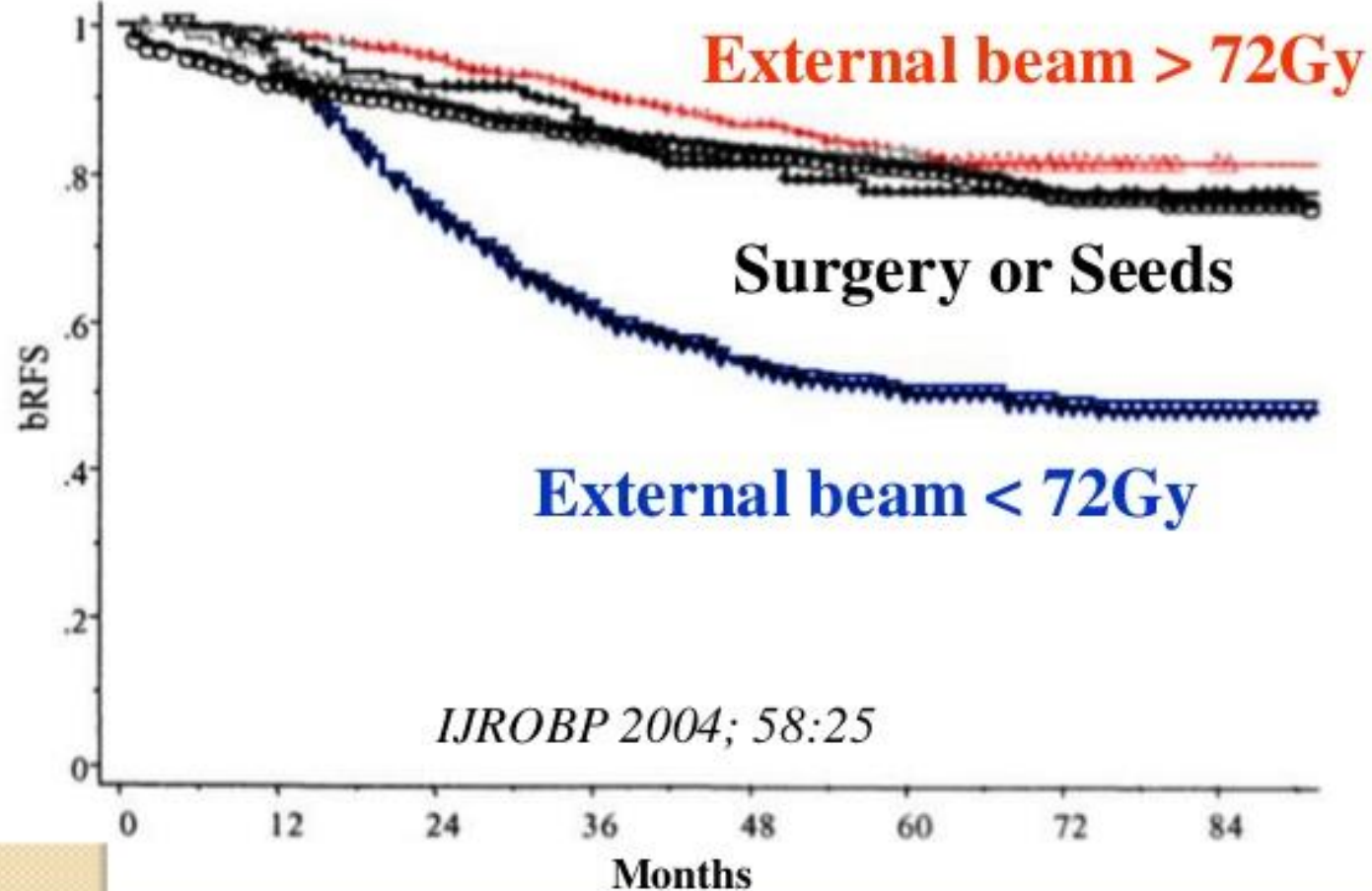


Cure Rates with Radiation versus Surgery for Early Stage Prostate Cancer are the same

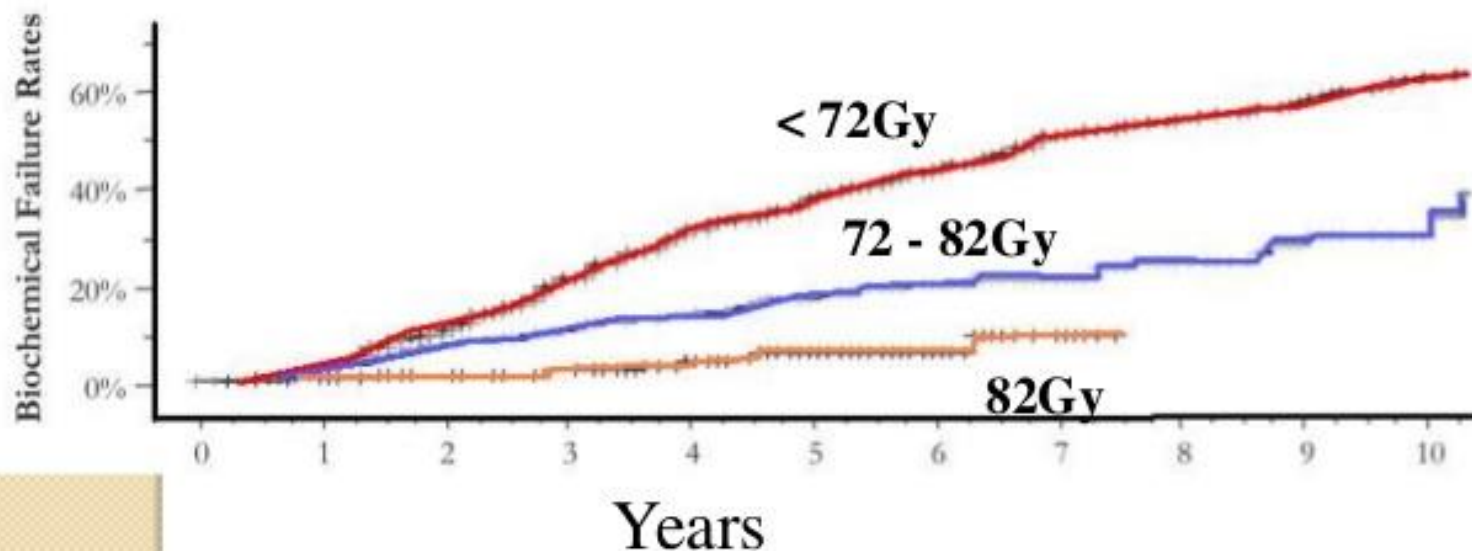


from the Cleveland Clinic.
Kupelian. JCO Aug 15 2002: 3376-3385

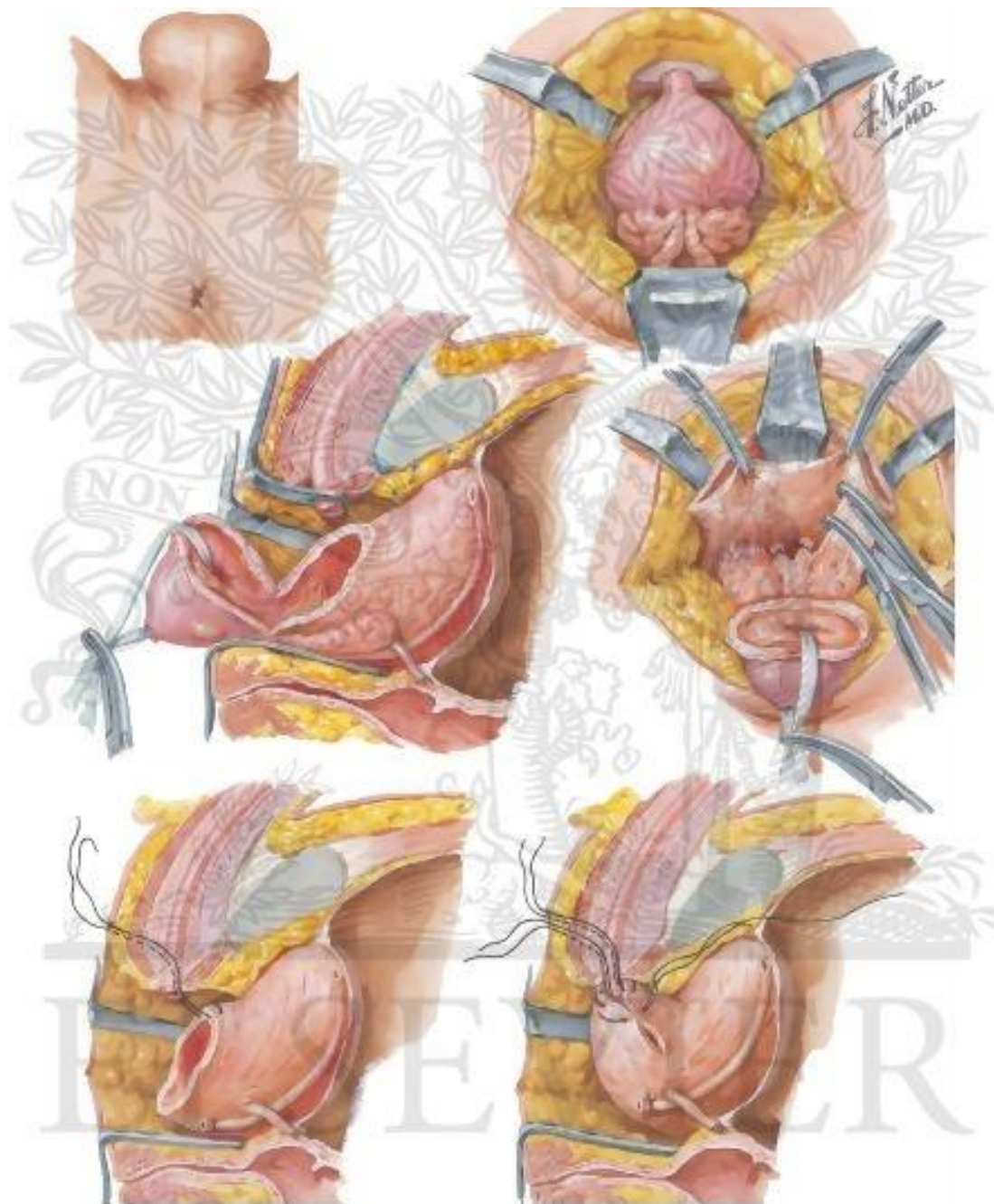
Prostate Cures Rates by Treatment, The Radiation Dose is Critical

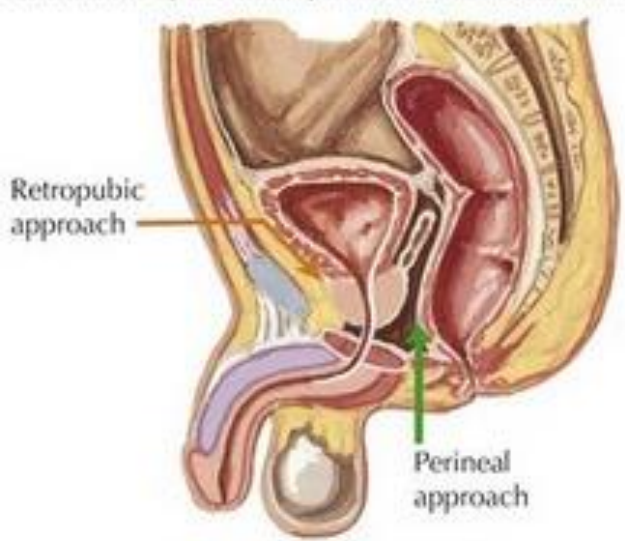


Prostate Cancer Relapse Rate by Radiation Dose



Kupelian. IJROBP 2008:71:16





Either perineal or retropubic approach used to gain access

