

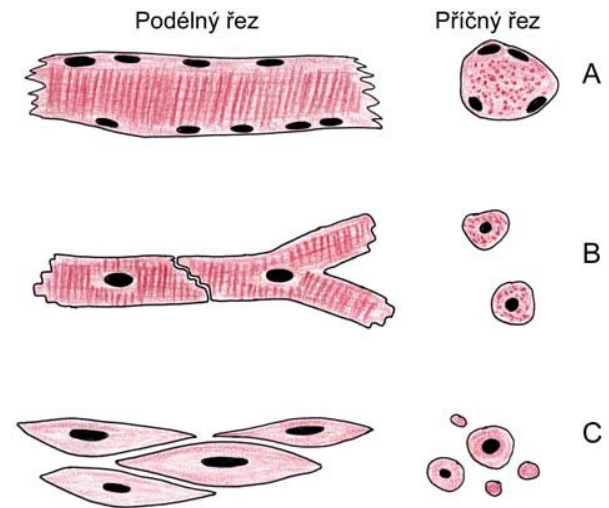
Svalová tkáň

Kosterní svalovina – rhabdomyocyty

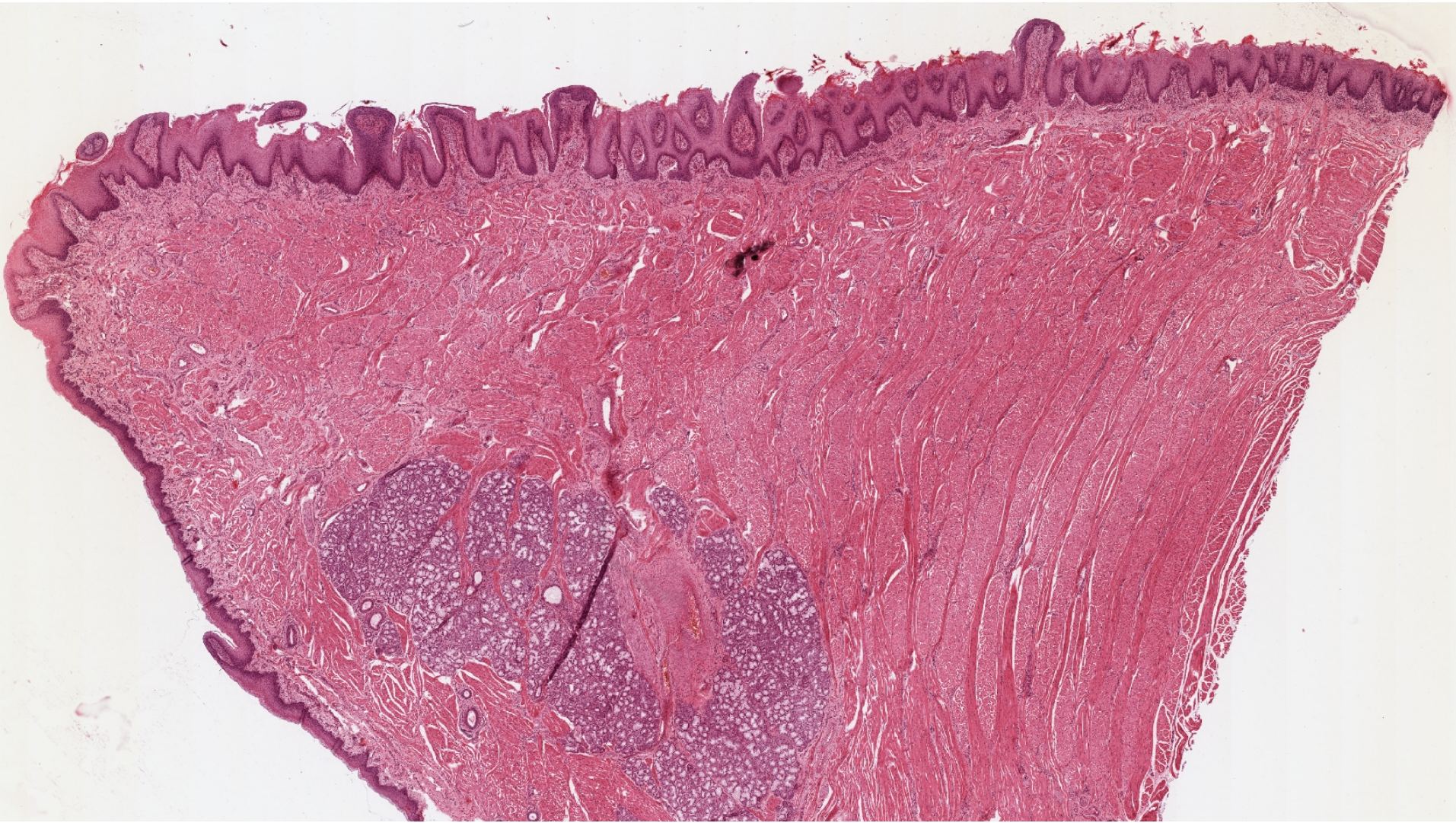
Srdeční svalovina - kardiomyocyty

Hladká svalovina - leiomyocyty

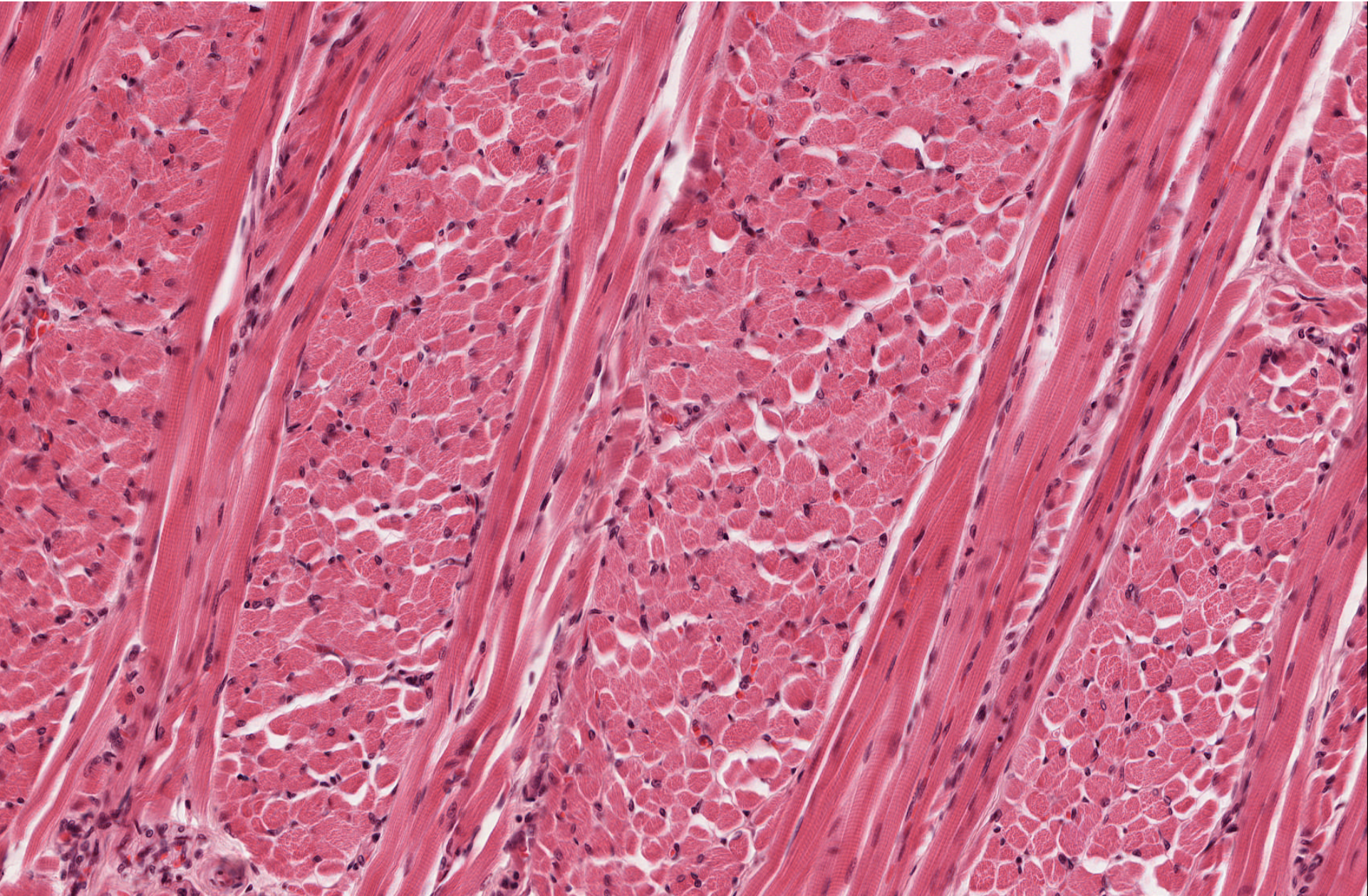
Opakování tkání



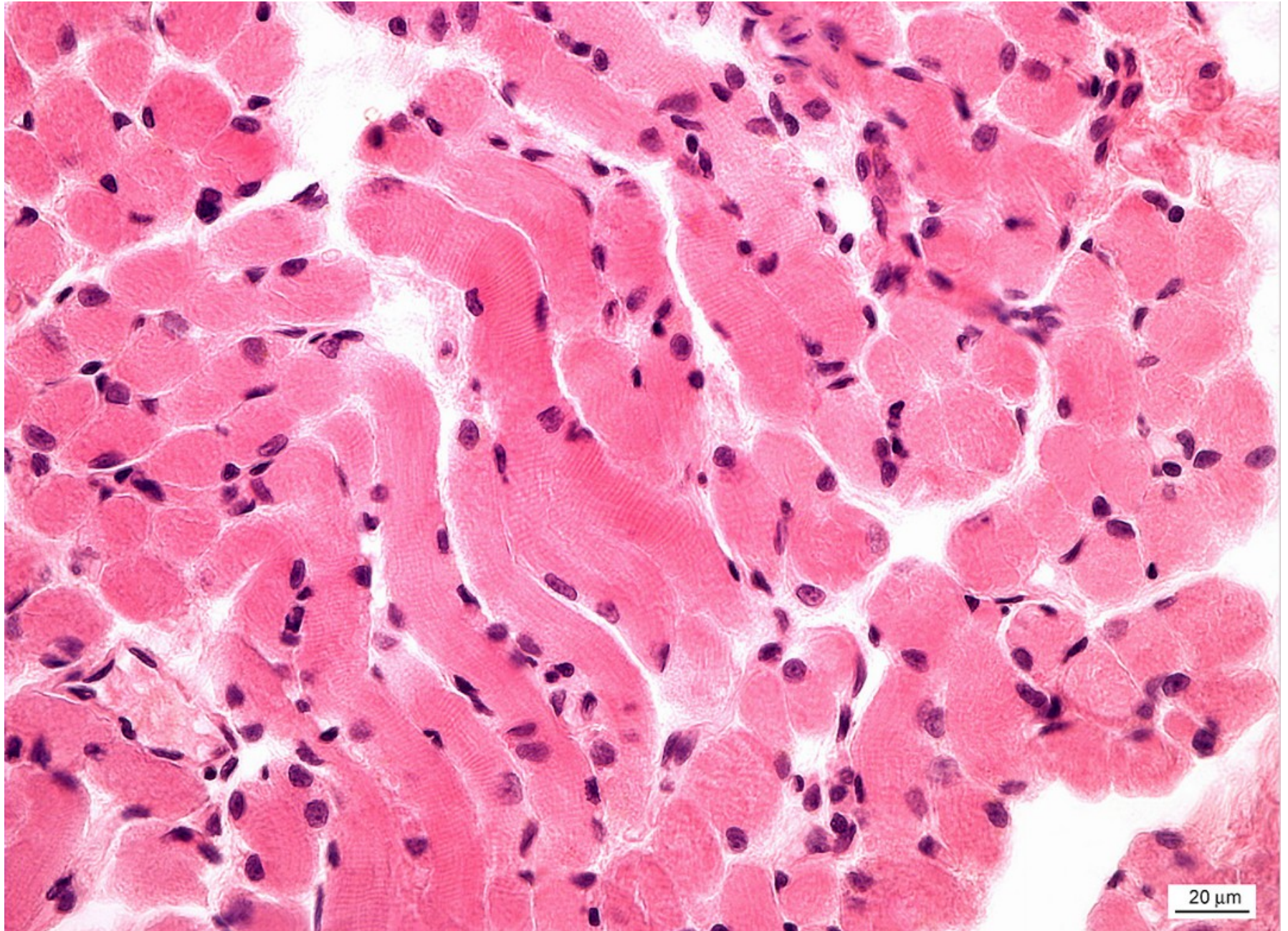
Kosterní svalovina – Apex linguae



Kosterní svalová tkáň – *Apex linguae*



Kosterní svalová tkáň (příčně pruhovaná)



Rhabdomyocyty – okohybný sval potkana (TEM)

kontrahovaný

mitochondrie

myofibrily

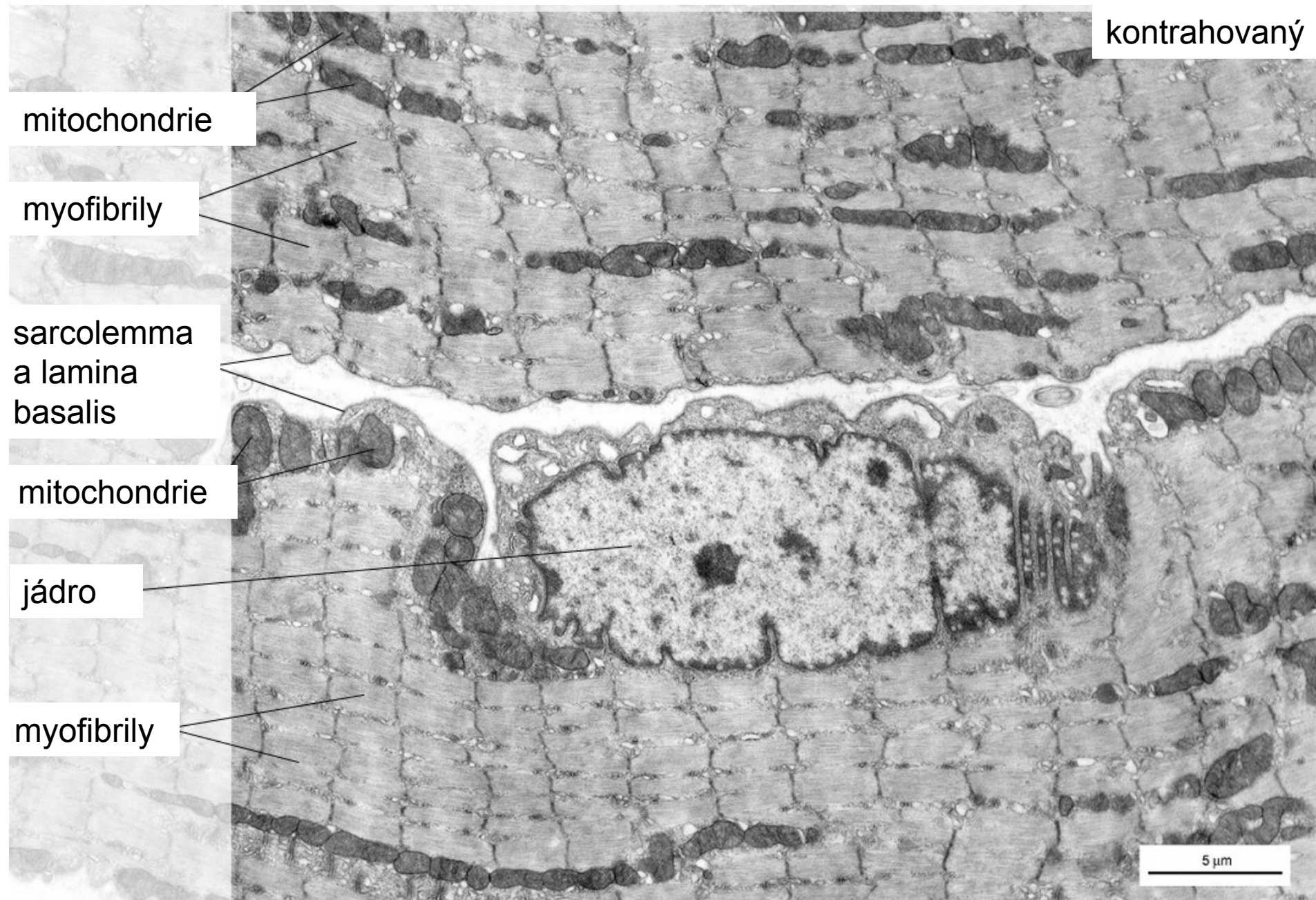
sarcolemma
a lamina
basalis

mitochondrie

jádro

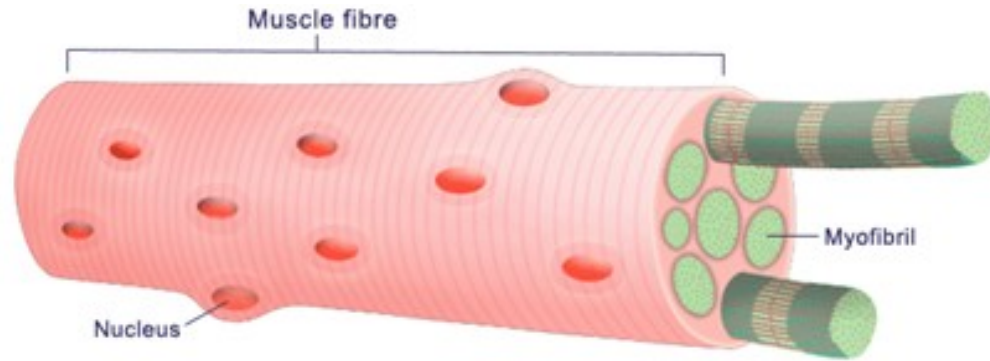
myofibrily

5 μ m

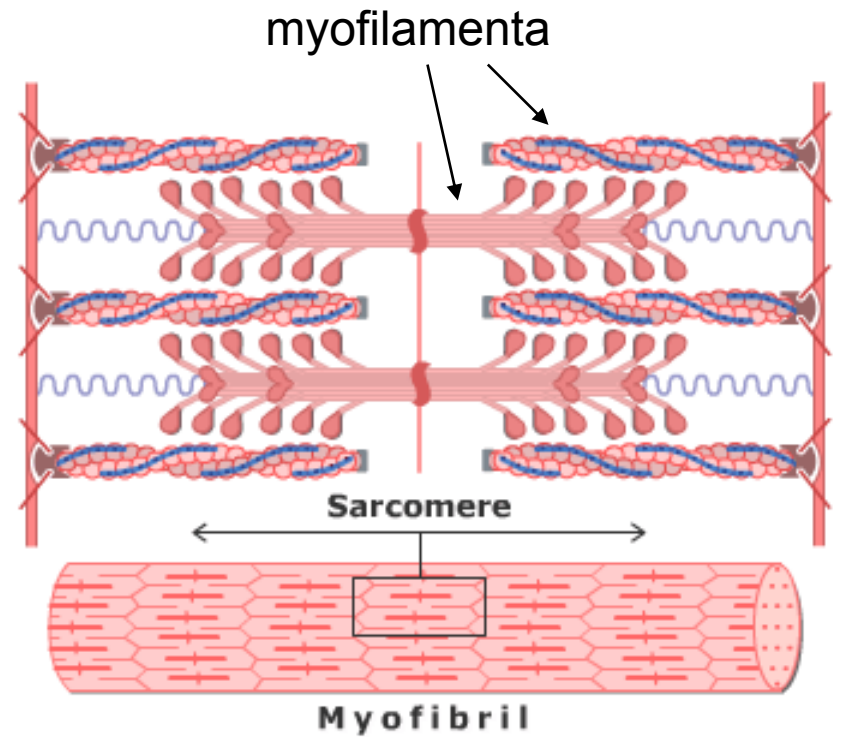
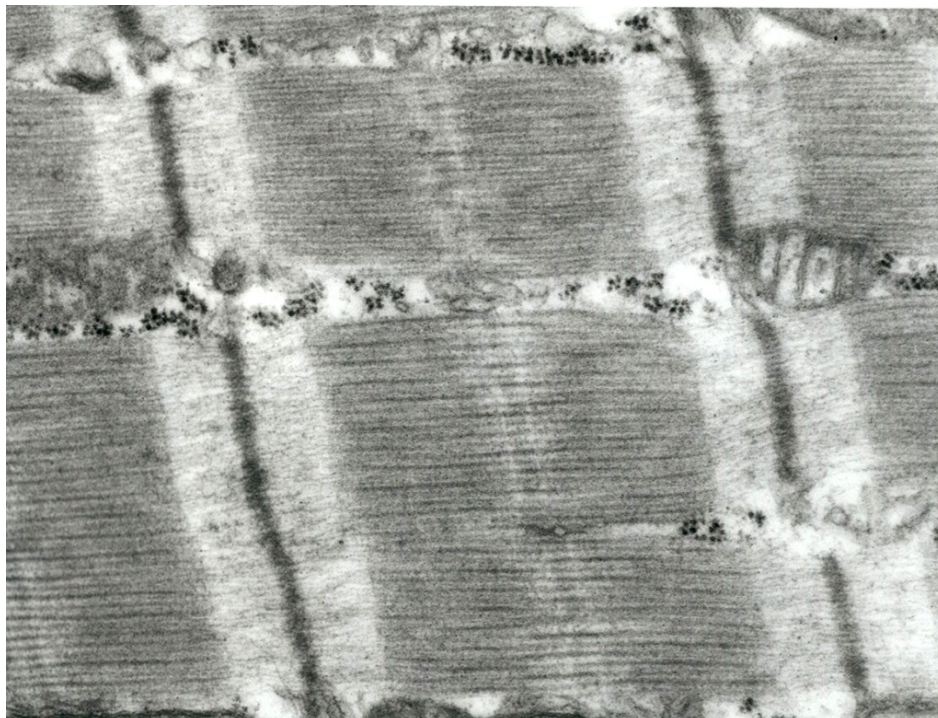


Rhabdomyocyt

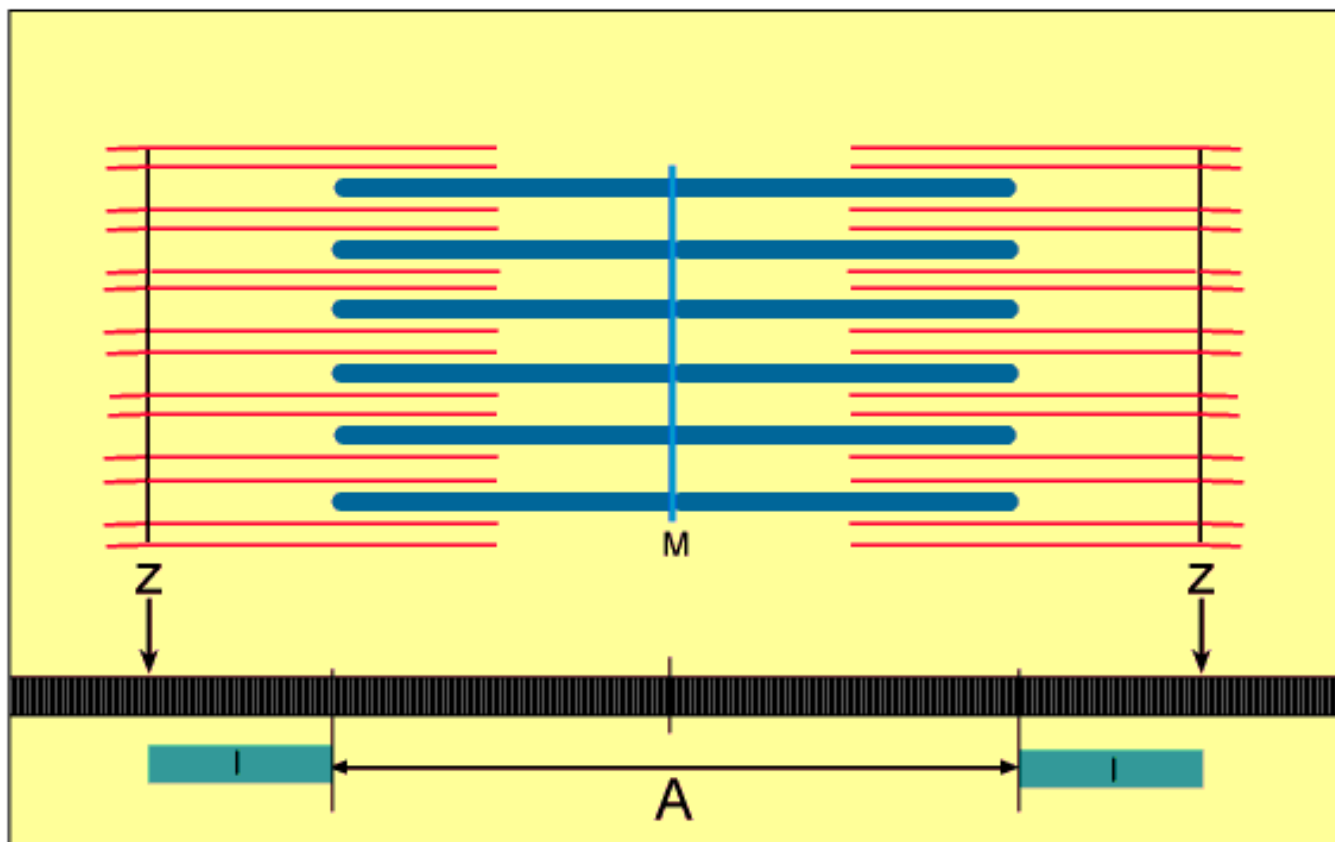
Svalové vlákno
Myofibrila
Myofilamentum



I-proužek A-proužek I-proužek
Z H-M-H Z



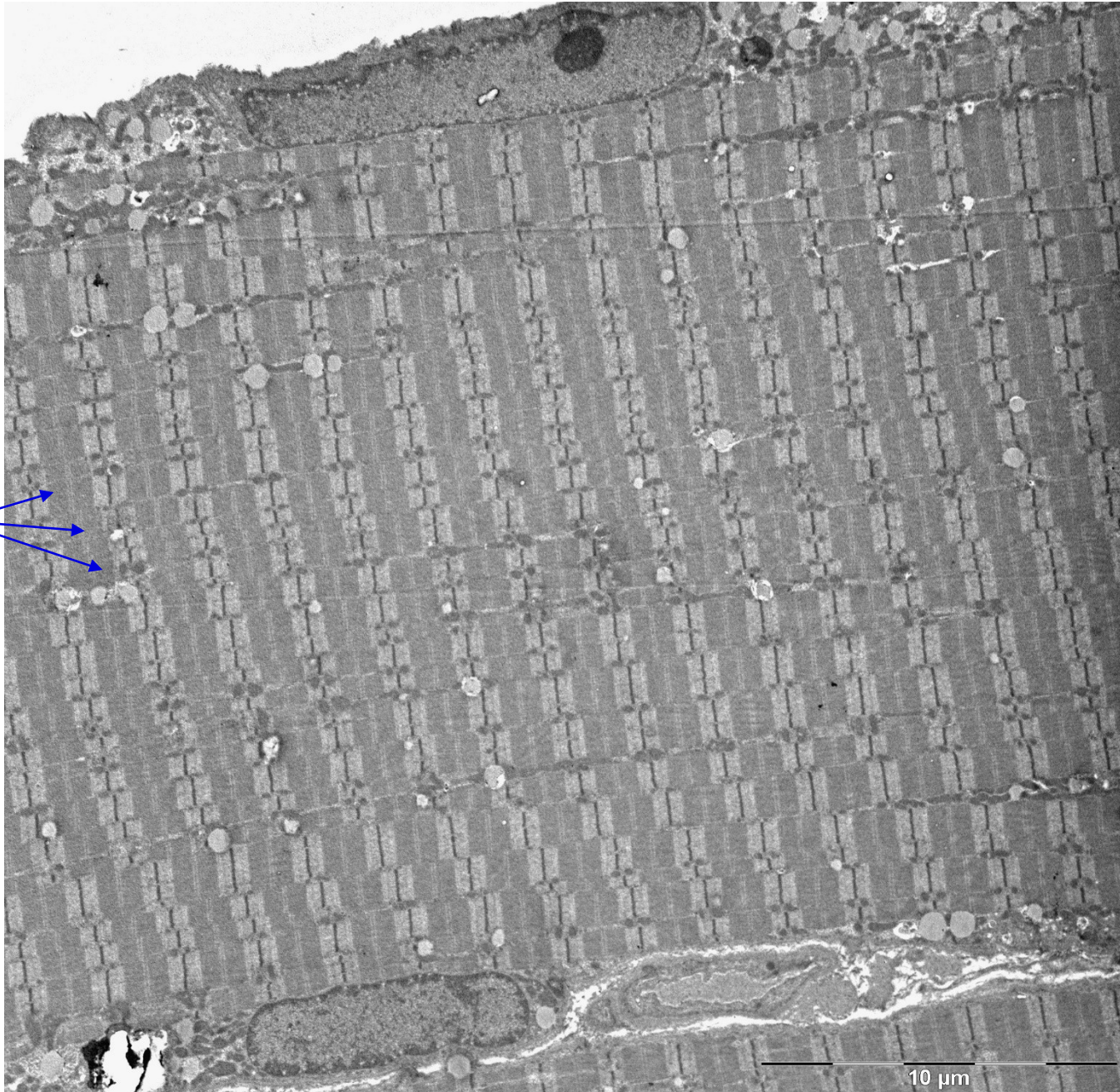
Svalová kontrakce



Rhabdomyocyt – člověk (TEM)

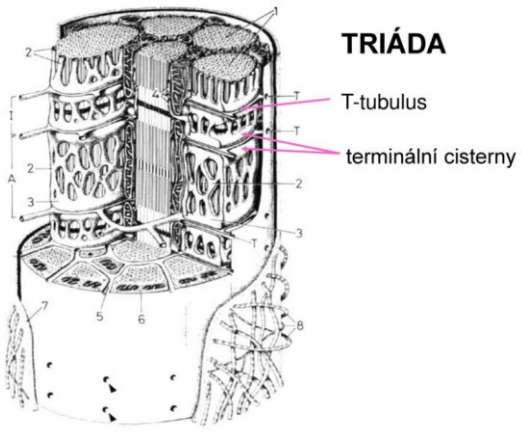
relaxovaný

myofibrily

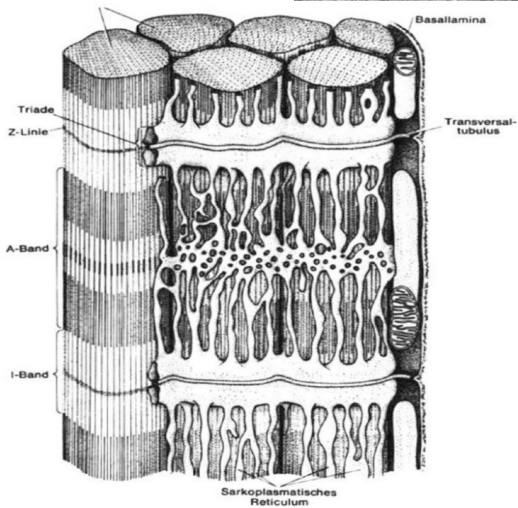


10 μm

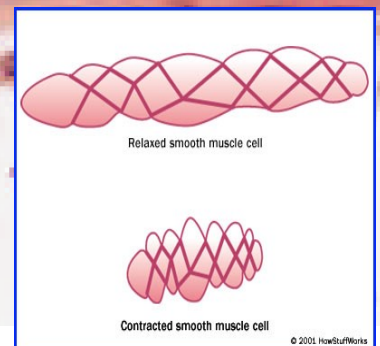
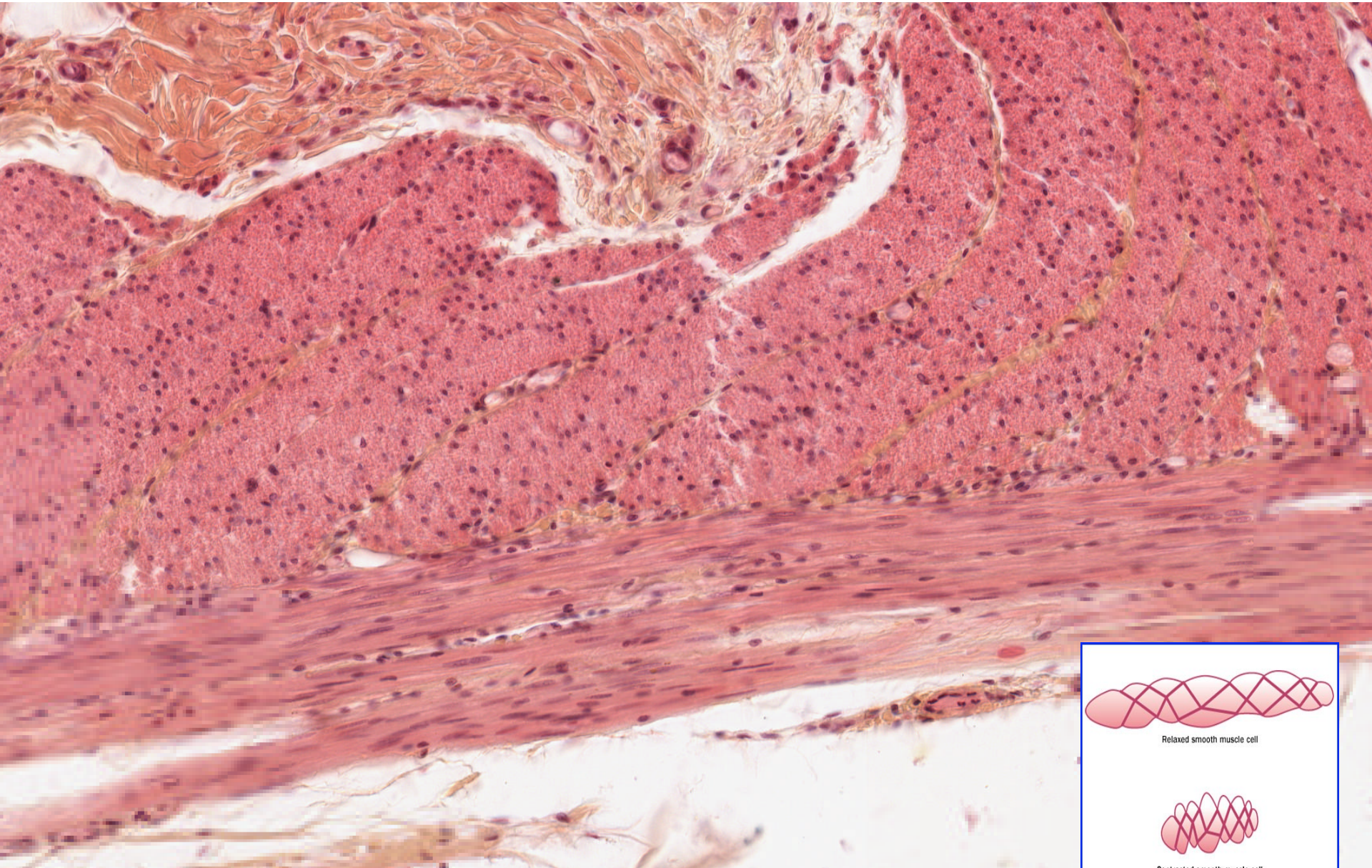
Rhabdomyocyt



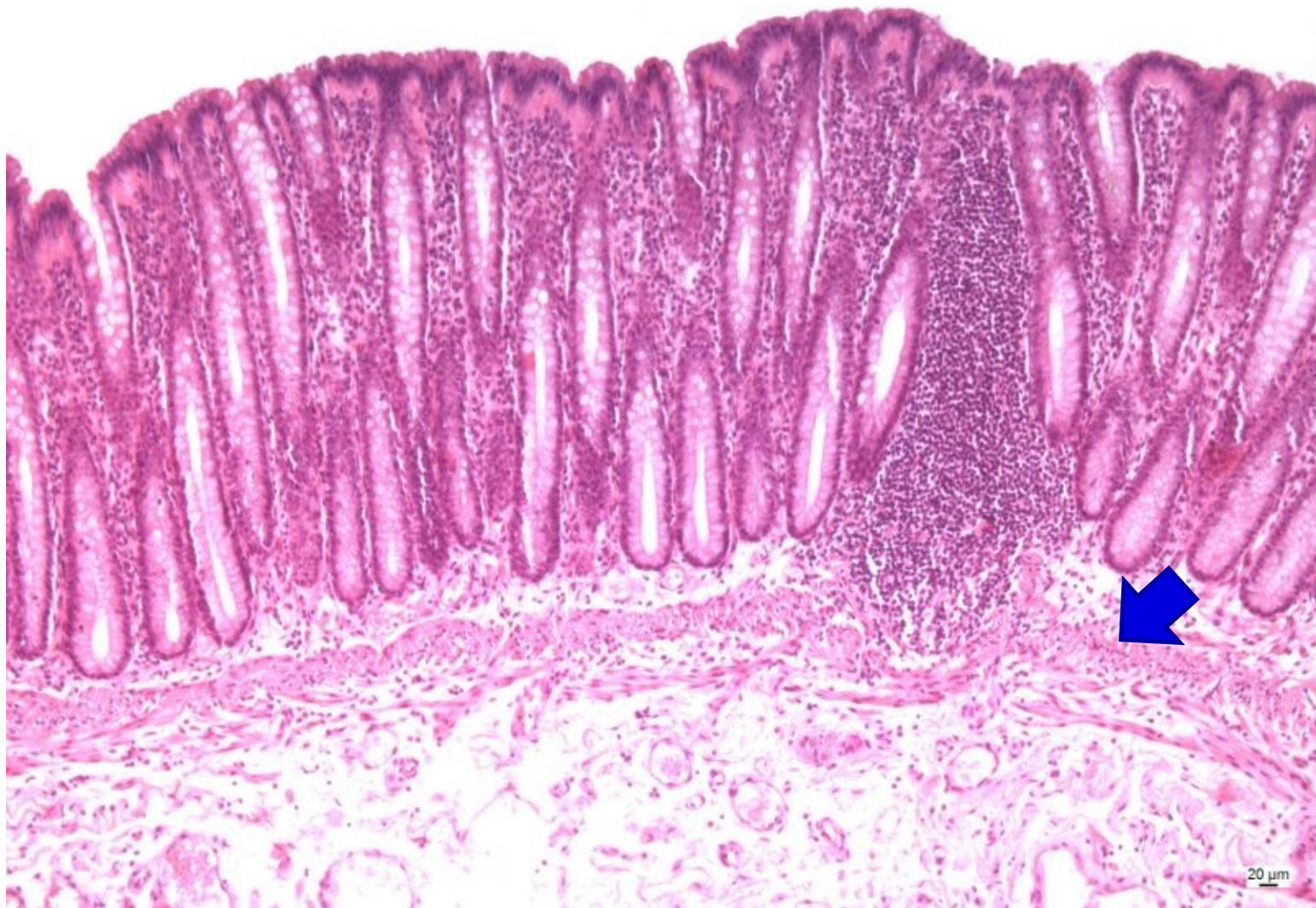
triáda



Hladká svalová tkáň – *Intestinum tenue*



Hladká svalovina – Intestinum crassum

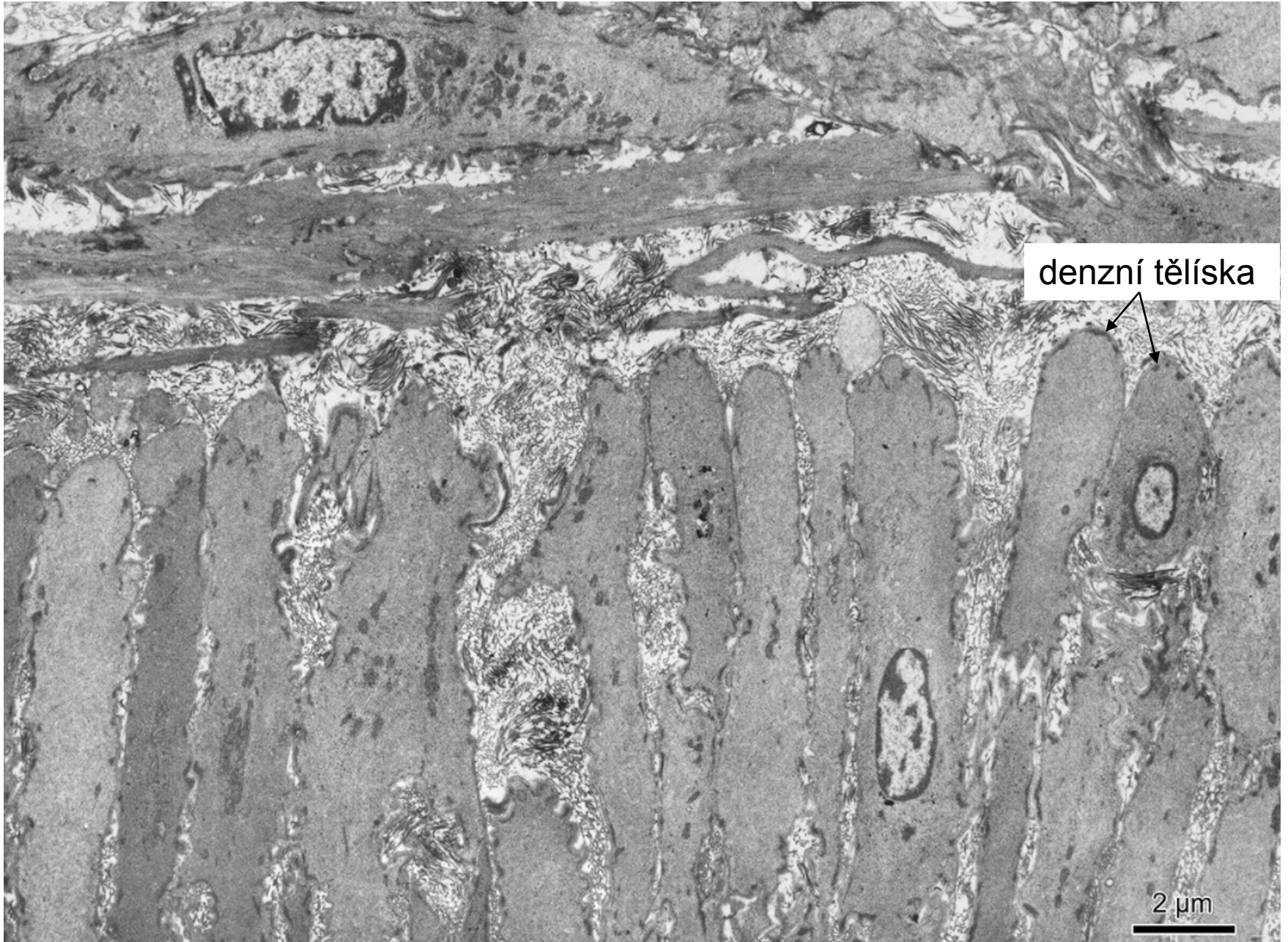


Appendix vermiformis



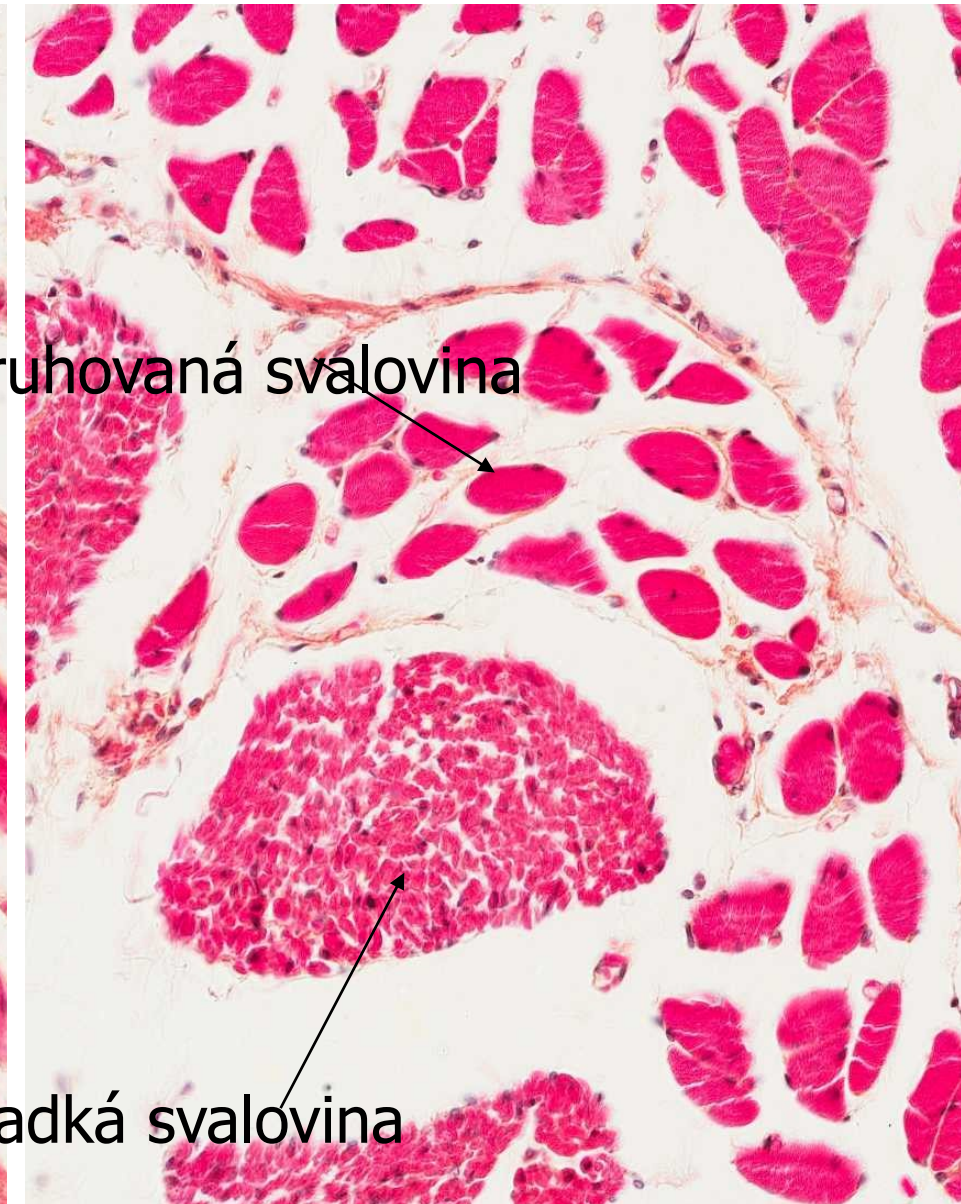
20 μ m

Leiomyocyt



Podélný řez

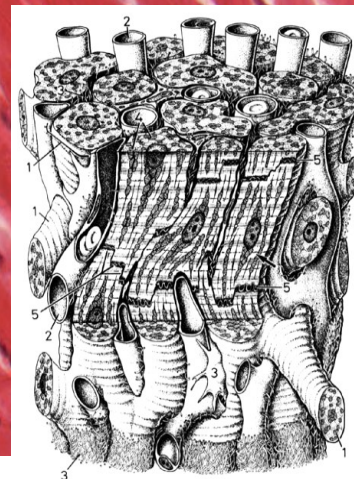
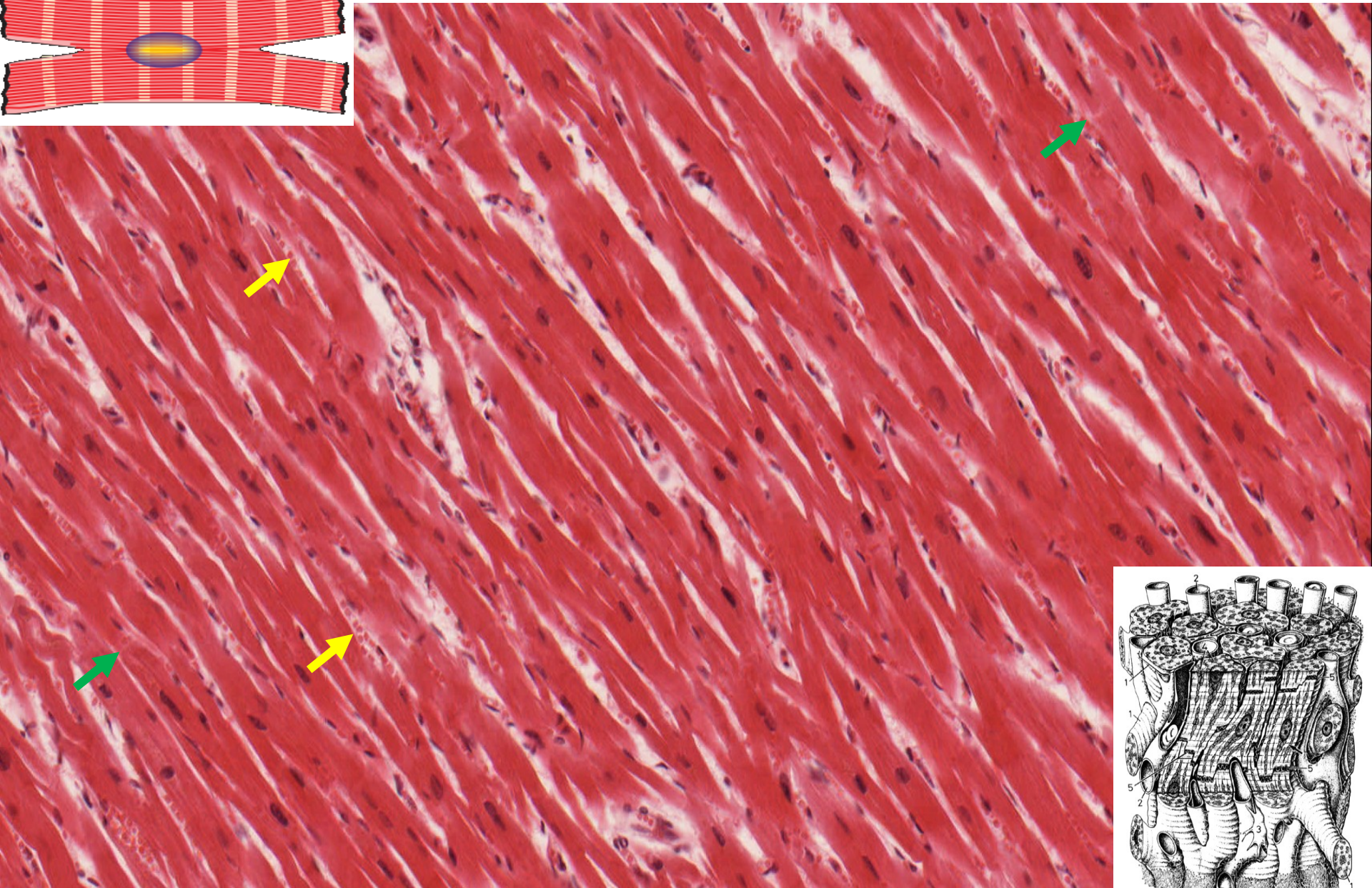
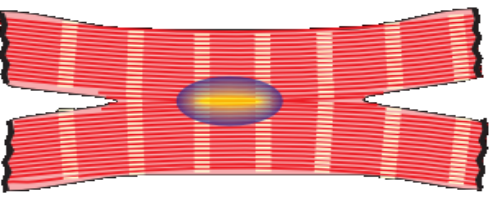
Příčný řez



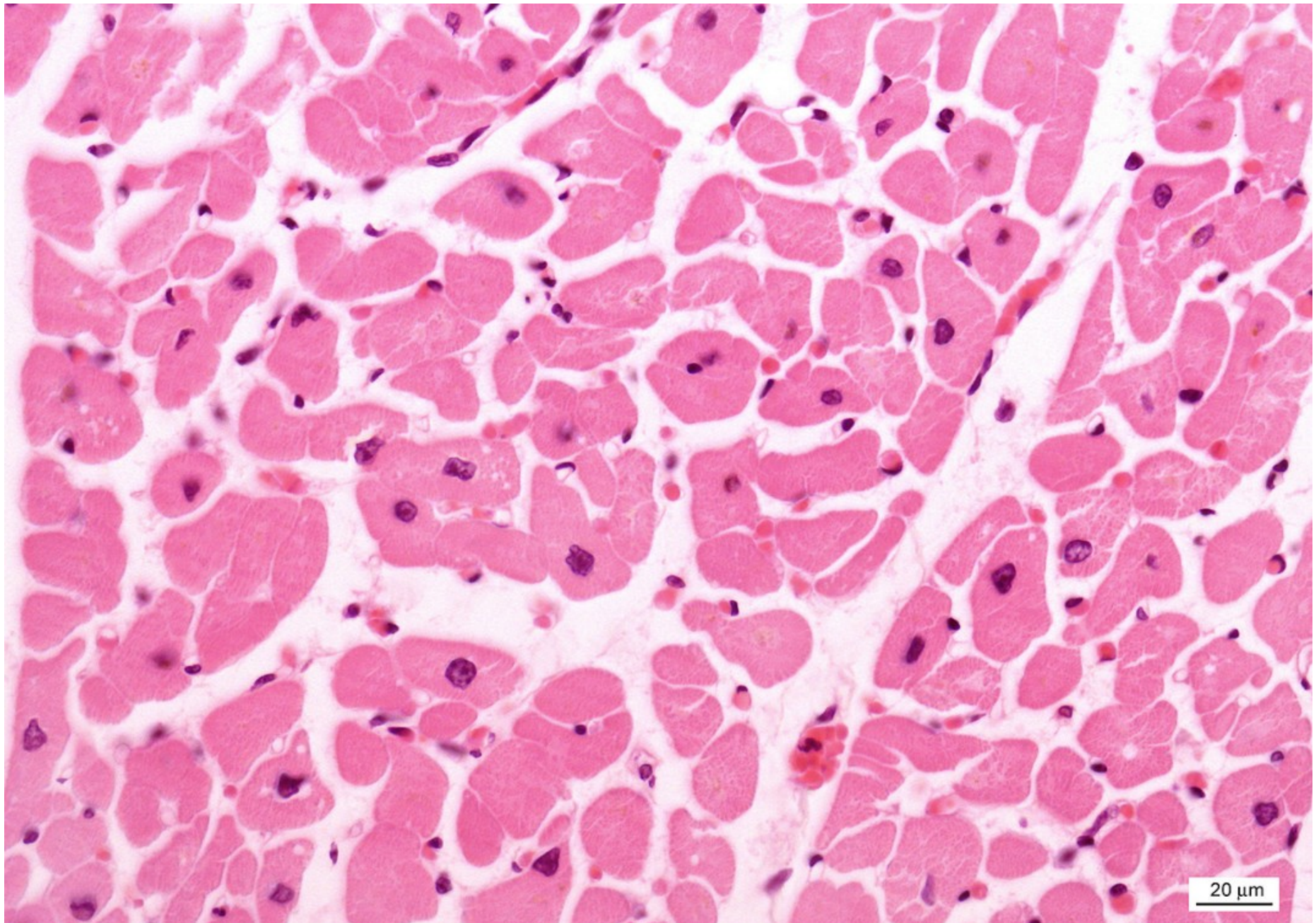
Příčně pruhovaná svalovina

Hladká svalovina

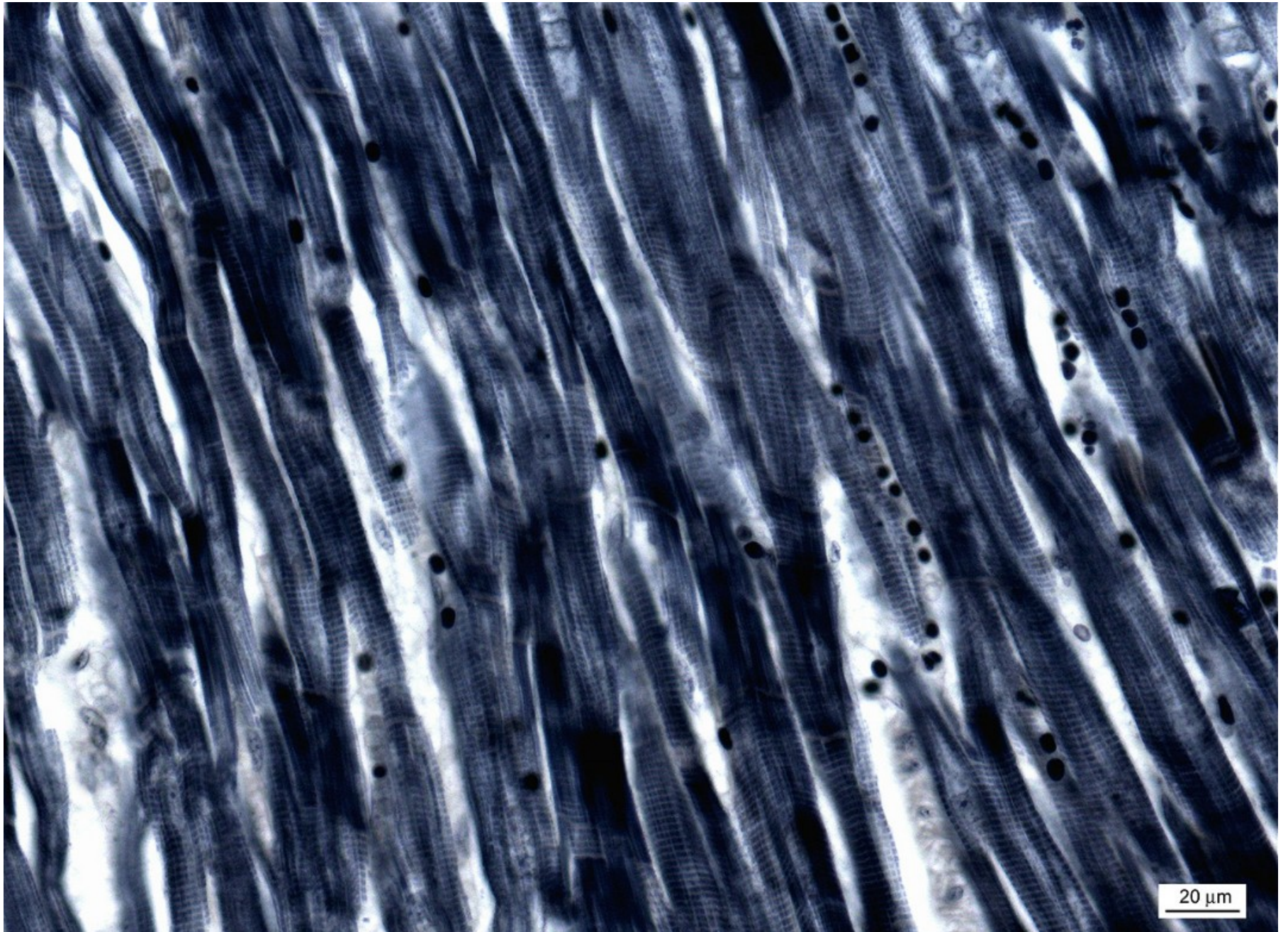
Srdeční svalová tkáň (HE) – podélný řez



Srdeční svalová tkáň (HE) – příčný řez

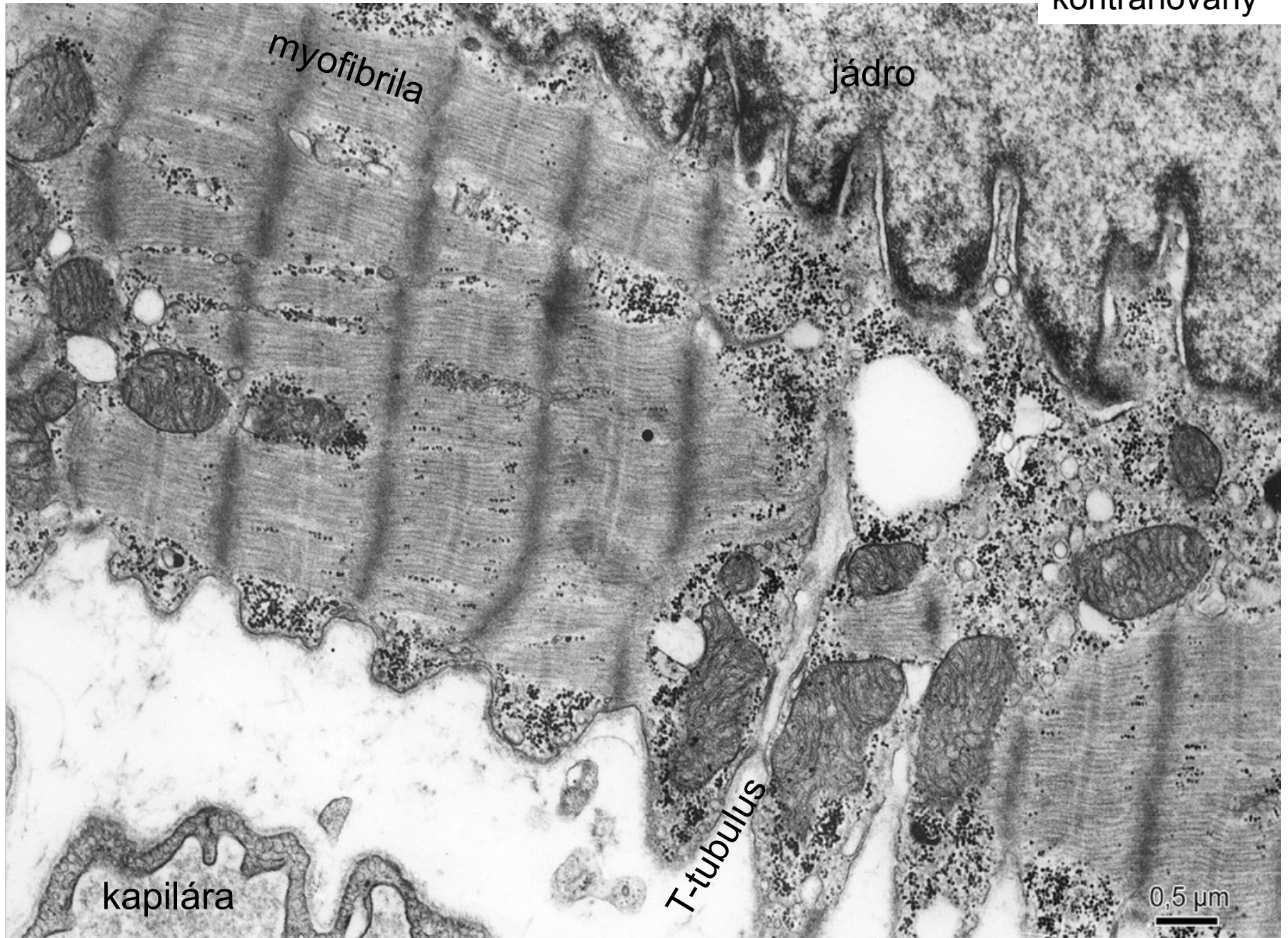


Srdeční svalová tkáň (Heidenhein)

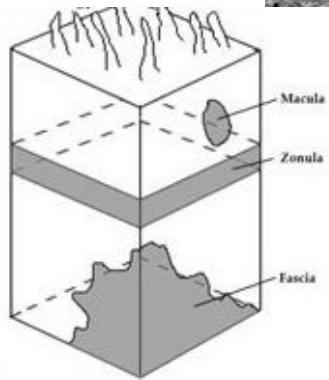
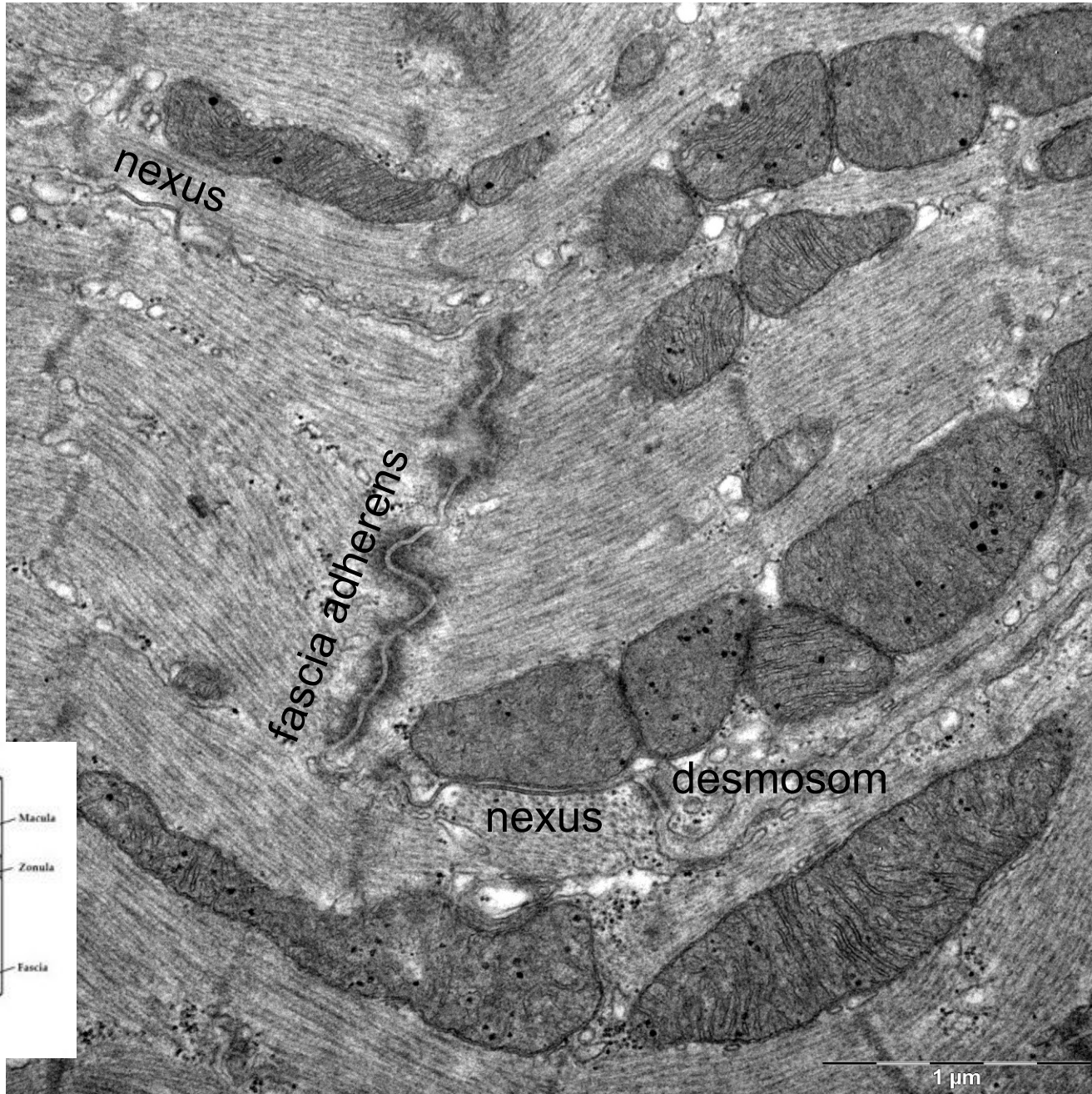


Kardiomyocyt

kontrahovaný



Kardiomyocyt – interkalární disk





Svalová tkáň

Preparáty:

Kosterní svalová tkáň (2. Apex linguae)

Hladká svalová tkáň (16. Intestinum tenue)

Srdeční svalová tkáň (64, 65. Myocardium)

Schéma sarkomery

Atlas EM:

Rhabdomyocyt (42-43)

Leiomyocyt (47)

Kardiomyocyt (44-46)