

GG HH 20

1 mandibulární oblouk

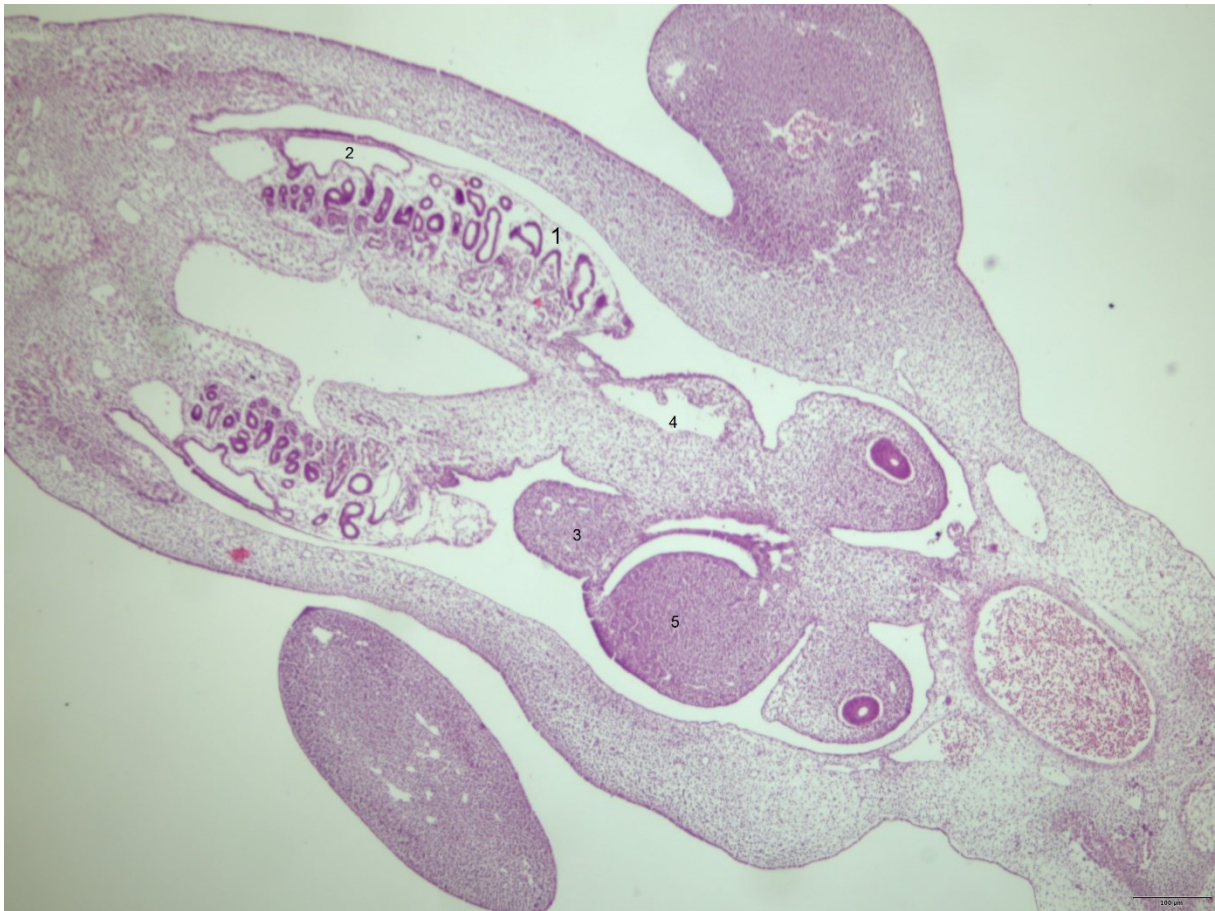
2 srdce (heart)

3 srdce

4 játra (liver)

5 ledviny (kidney)

6 plíce (lung)



GG HH24

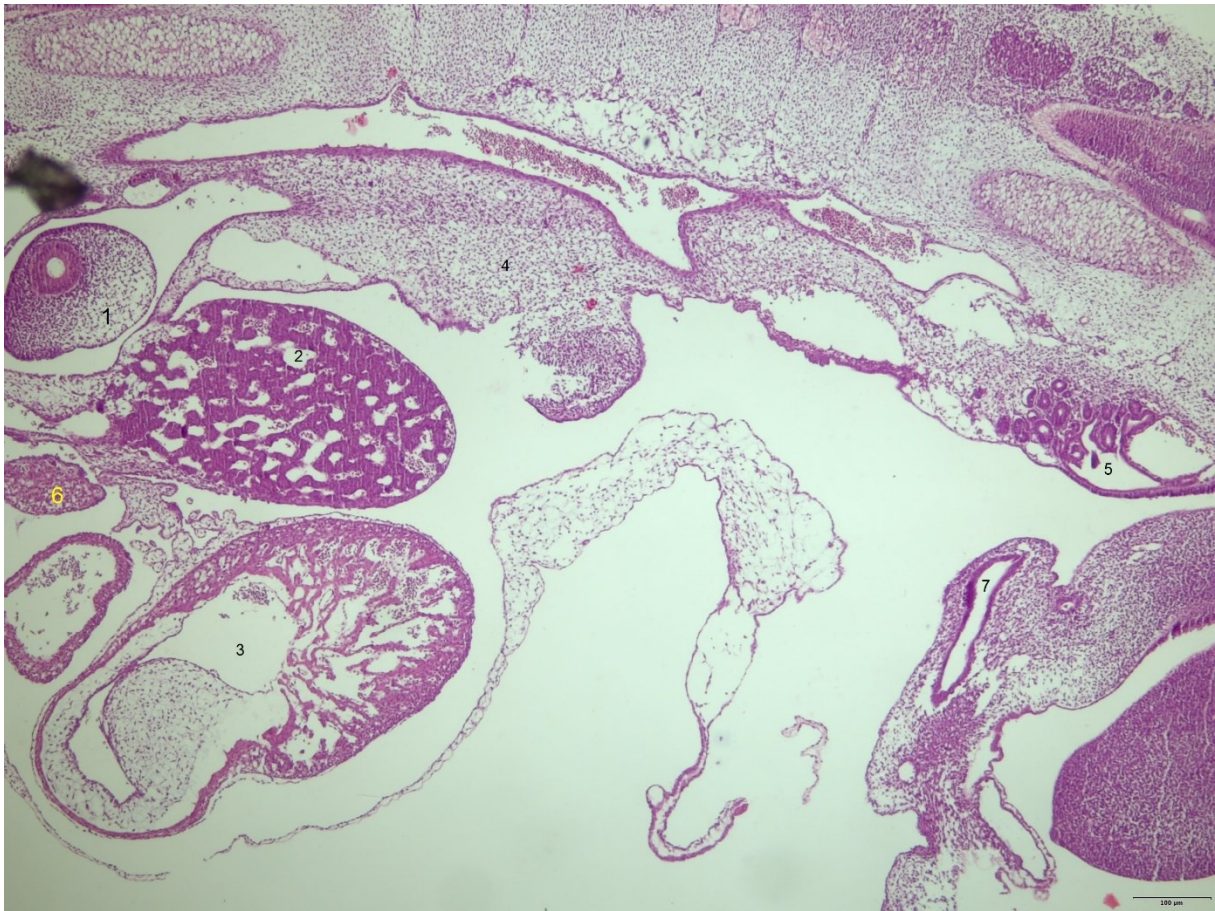
1 ledviny (asi spis mesonephros)

2 céva (artery)

3 játra

4 ceva

5 játra



GG HH26

1 plíce

2 jatra

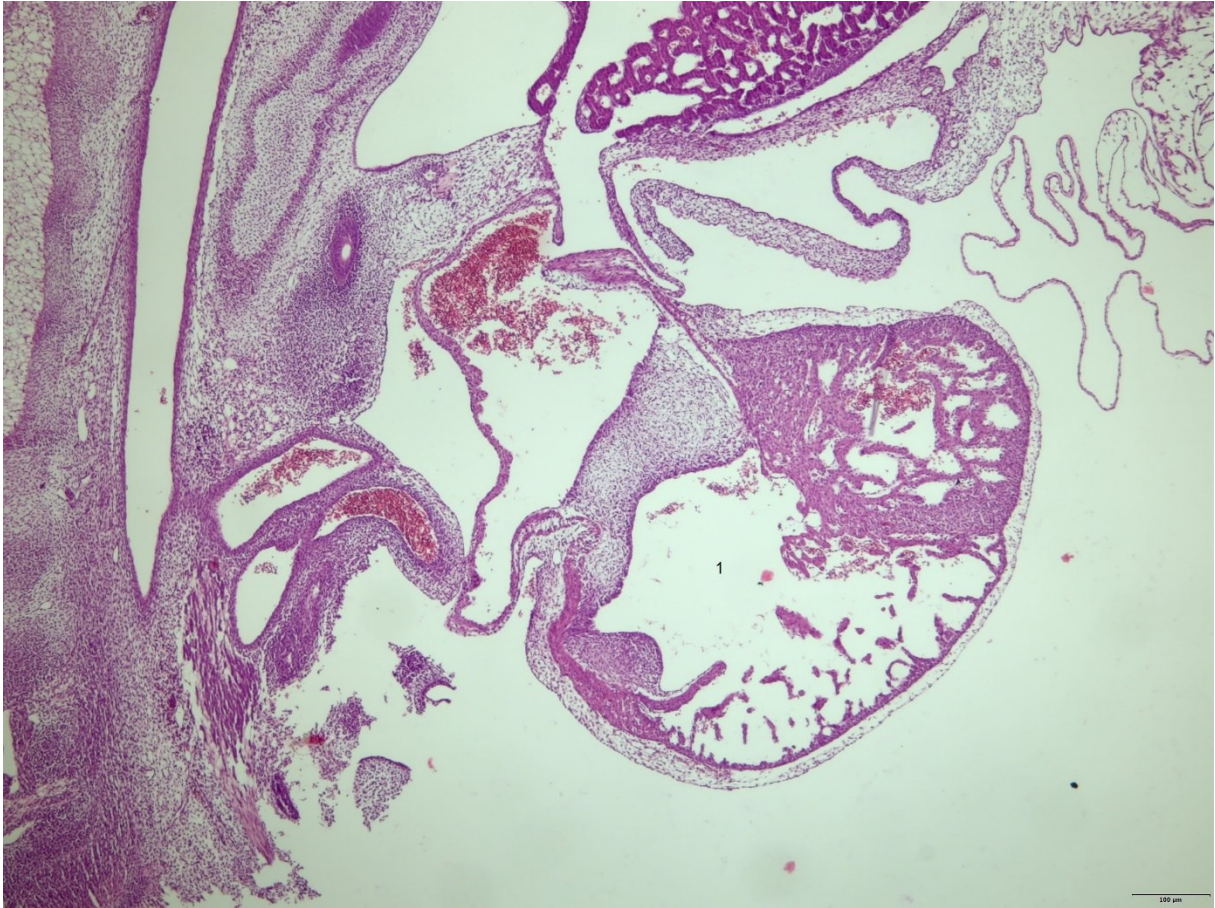
3 srdce

4 jen mesenchym

5 ledviny

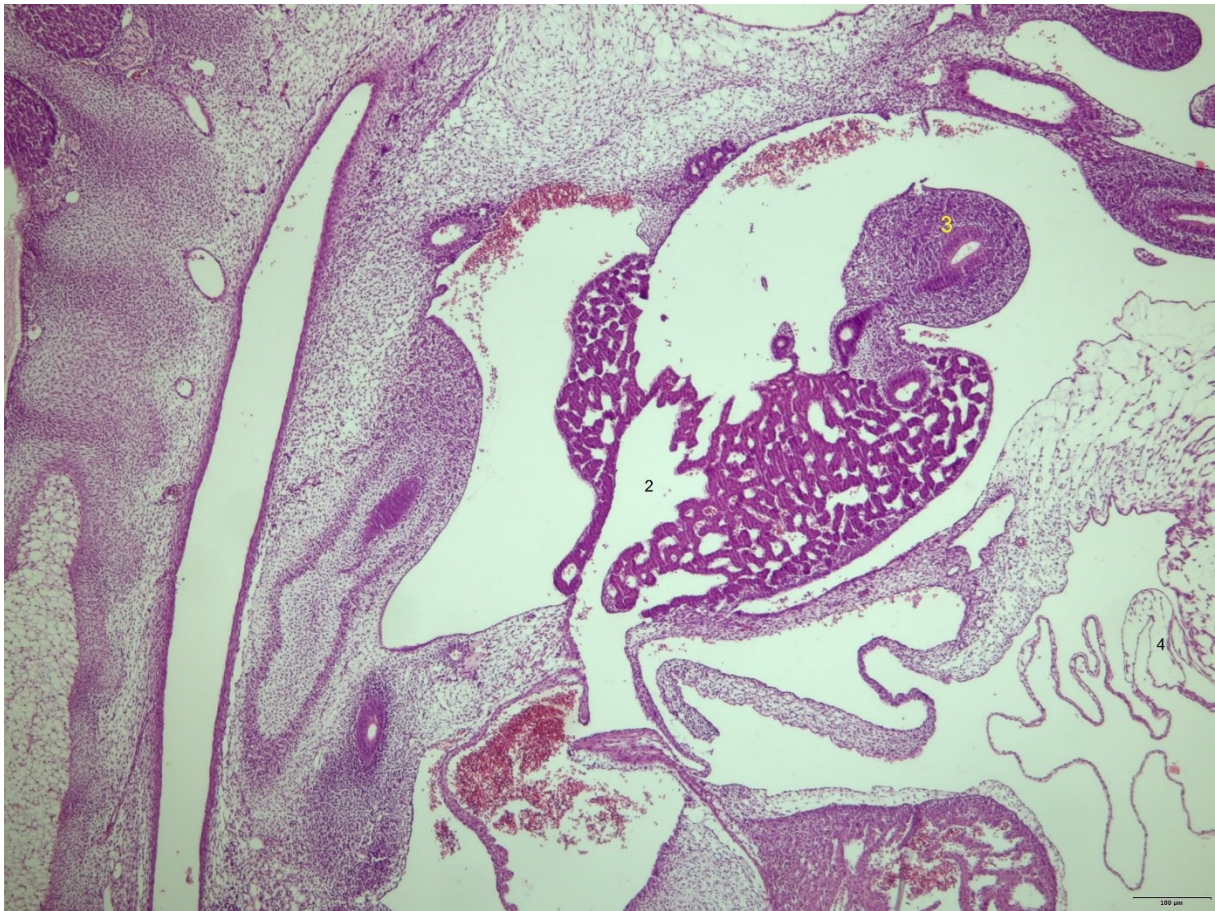
6 thymus nebo stitna zláza

7 asi střevo (intestine)



GG hh28a

1 srđce

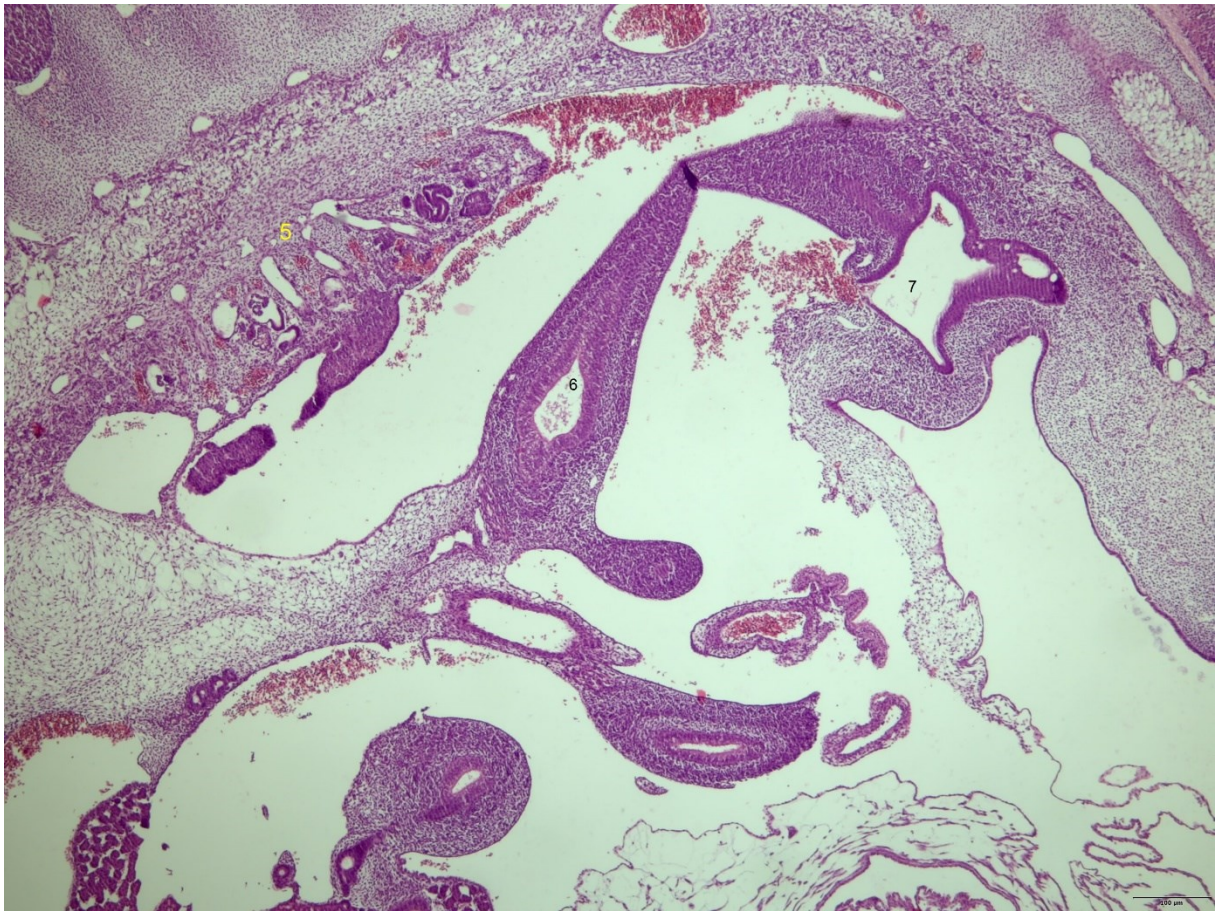


GG hh28b

2 játra

3 střevo

4 asi splanchnopleura

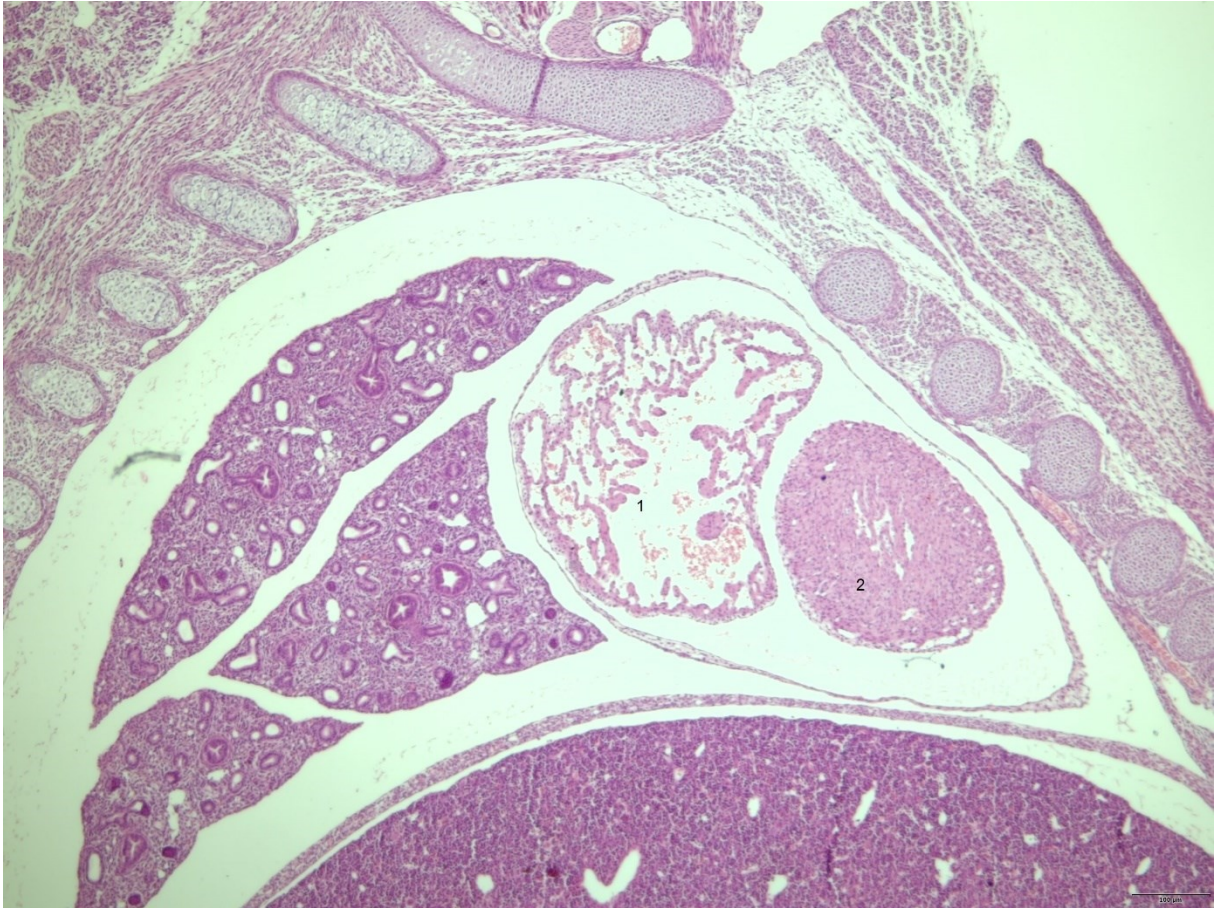


GG HH28c

5 ledviny (asi mesonephros)

6 střevo

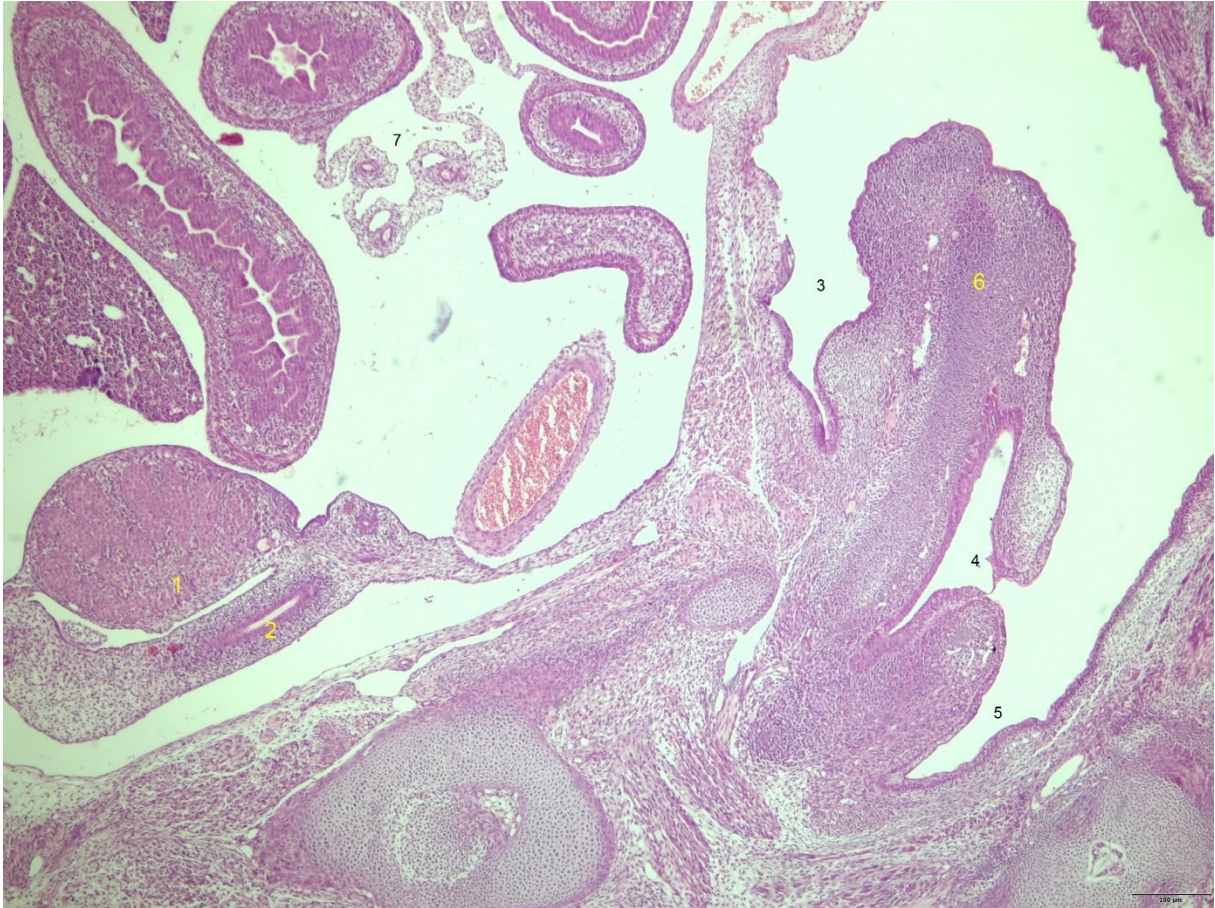
7 kloaka



MM 14,5 d

1 předsin (atrium)

2 komora (ventricle)

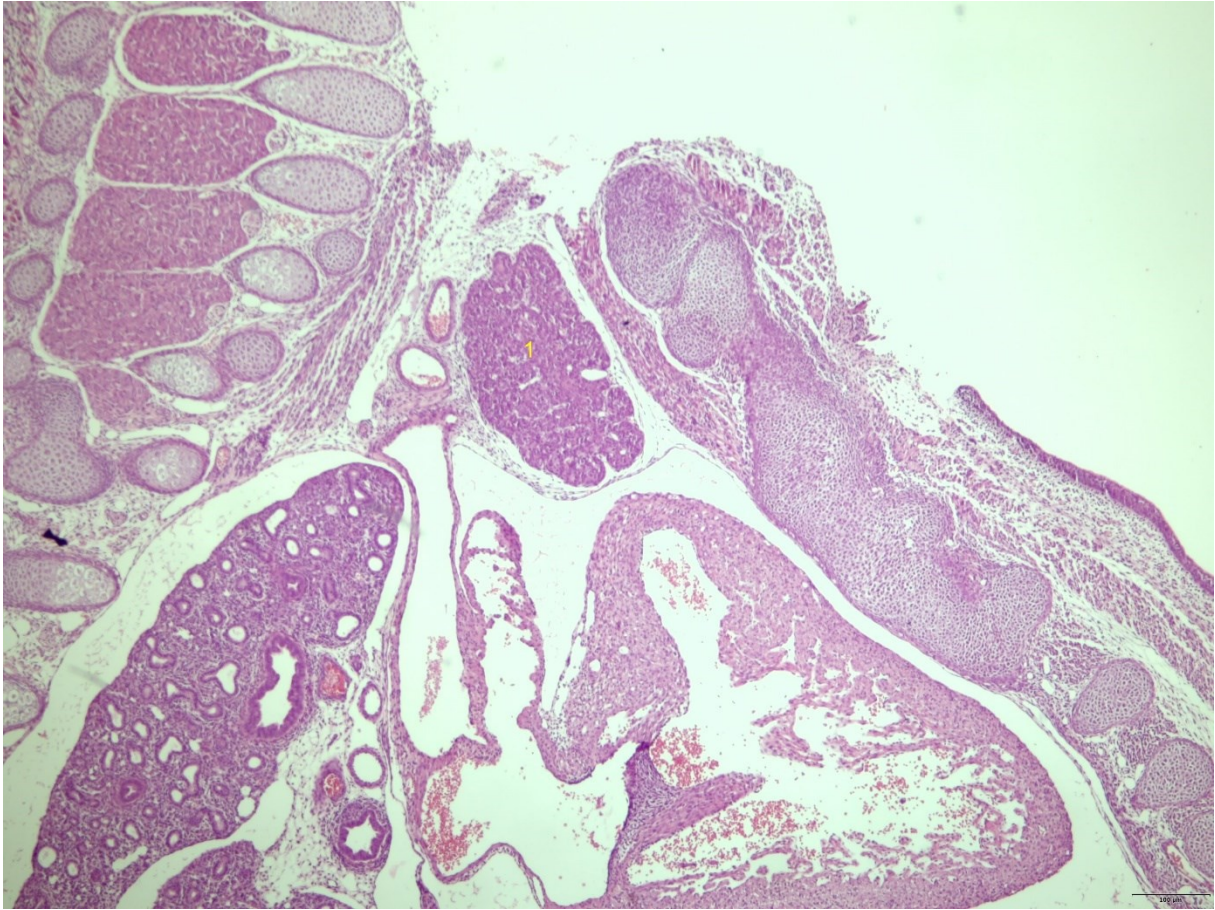


MM 14,5d b

1 testes

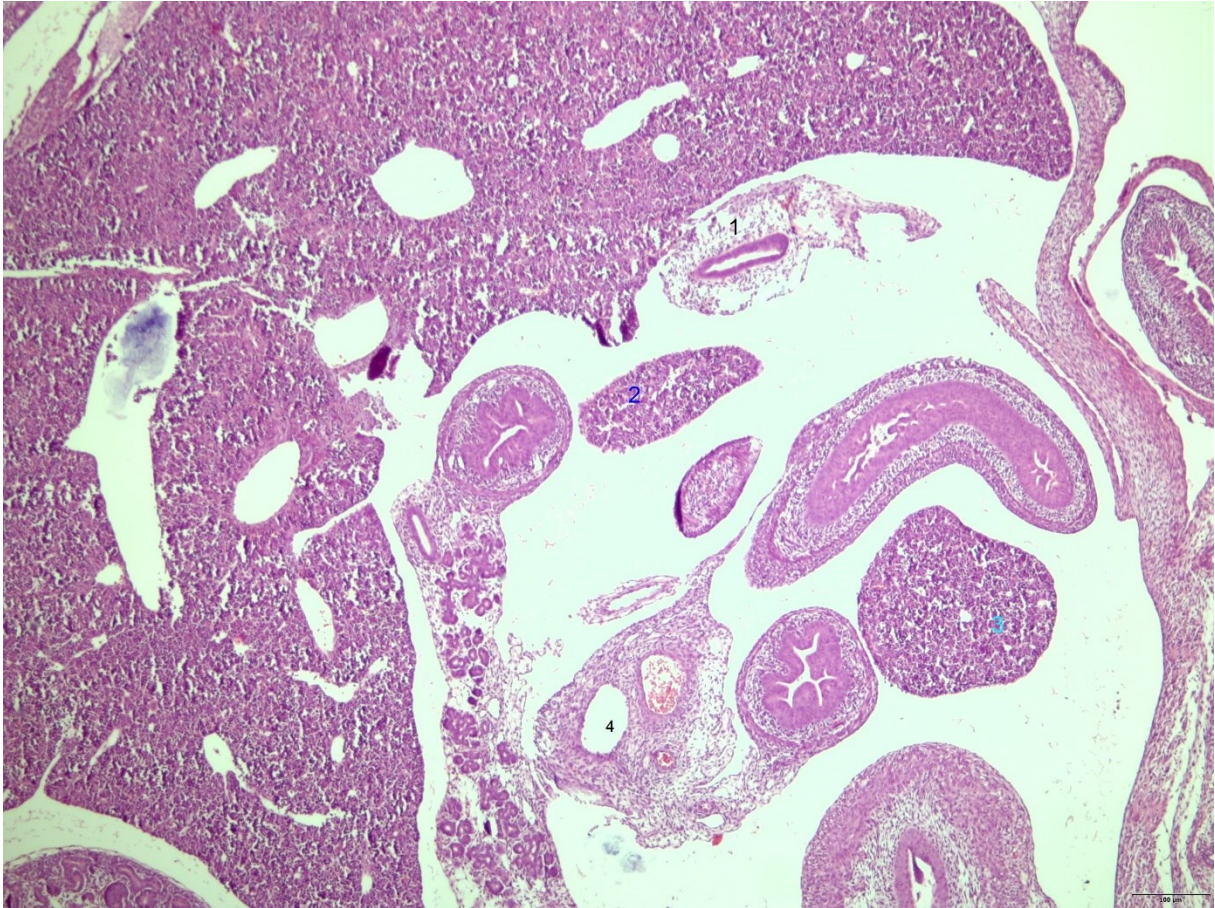
2 pankreas





MM 14,5 2a

1 thymus

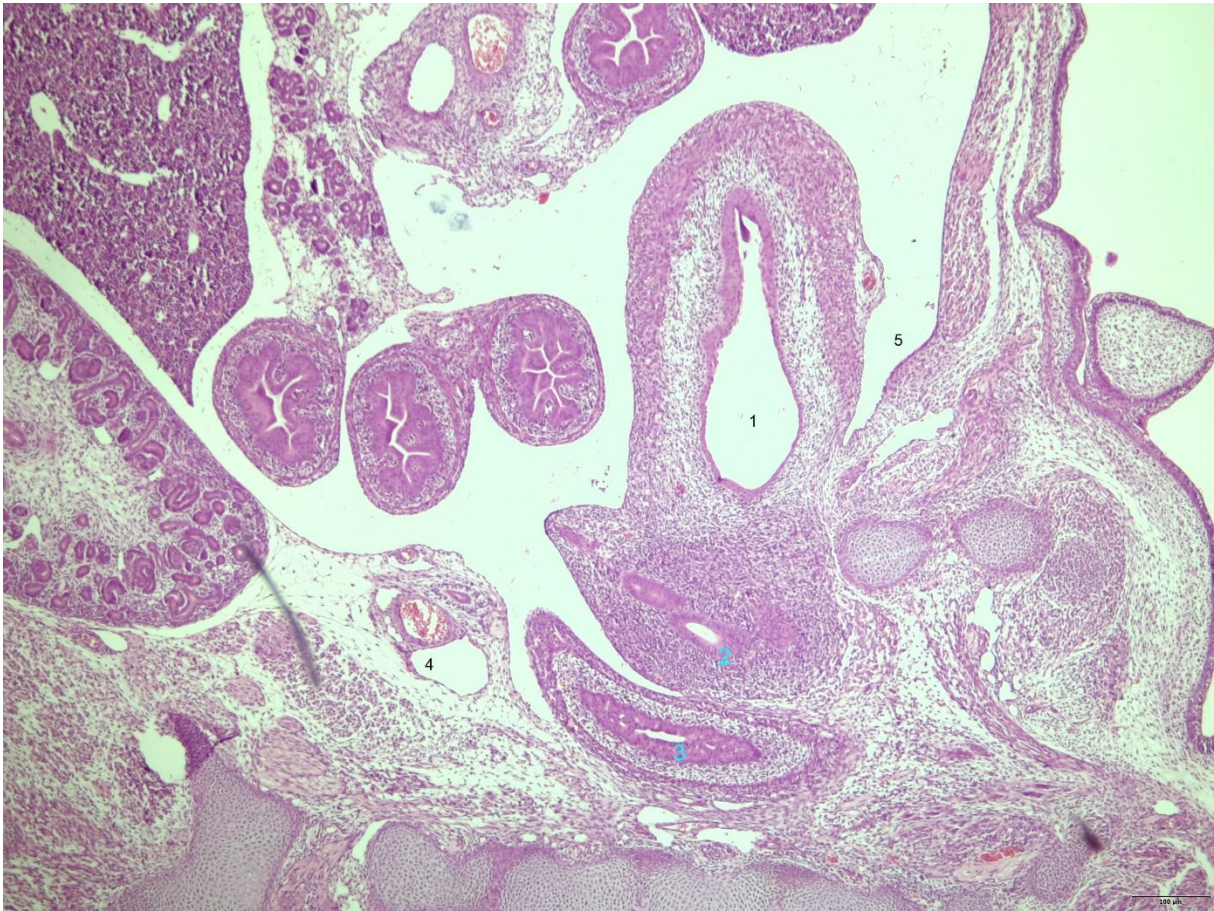


1 mohl by to byt zlučovod nebo nejaky jiný vyvod (some duct)

2 asi jaterní lalok

3 asi jaterní lalok

4 ceva



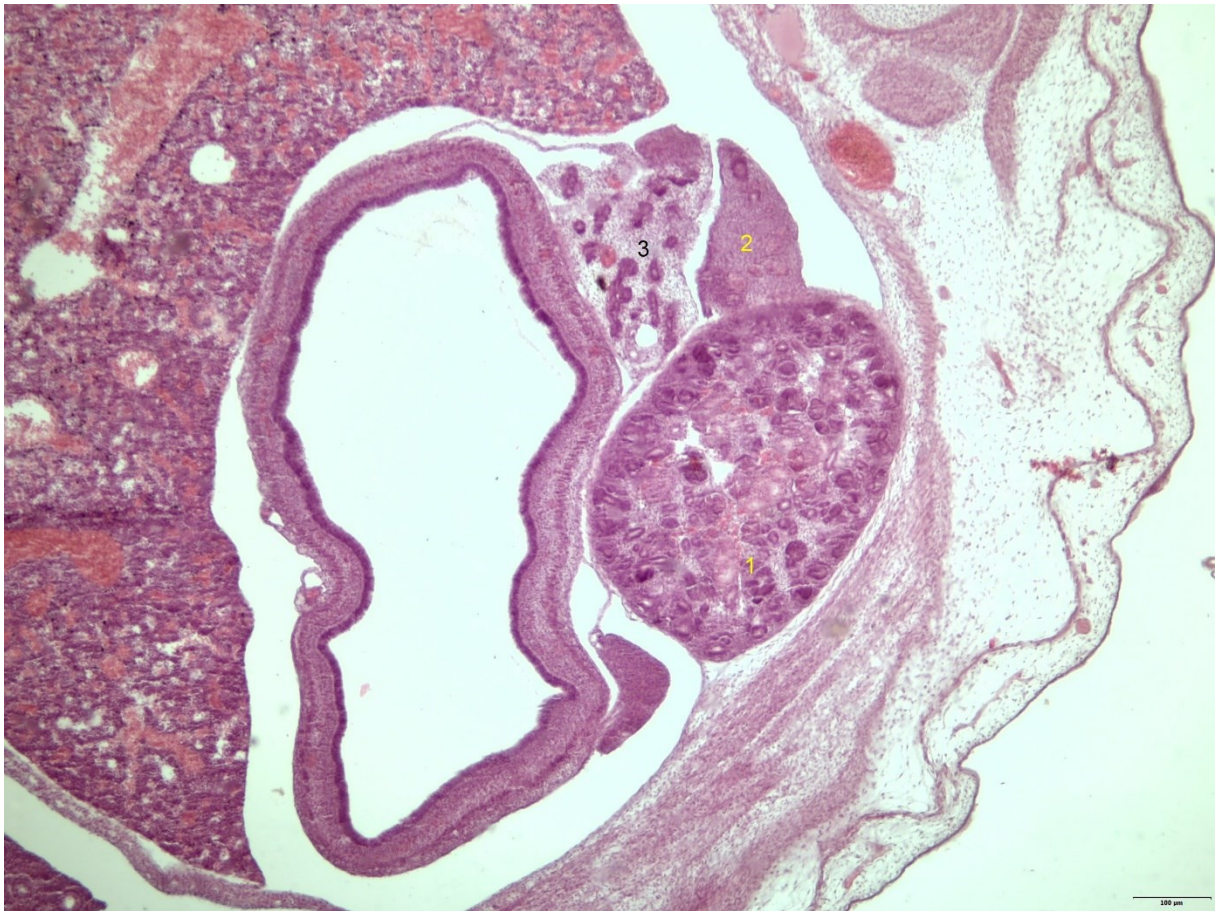
MM 14,5 2c

1 mocovy mechyr (urinal bladder)

2-3 vyvod ledvin a gonád (duct of kidney or gonads)

4 ceva

5 brisni dutiny (cavity)



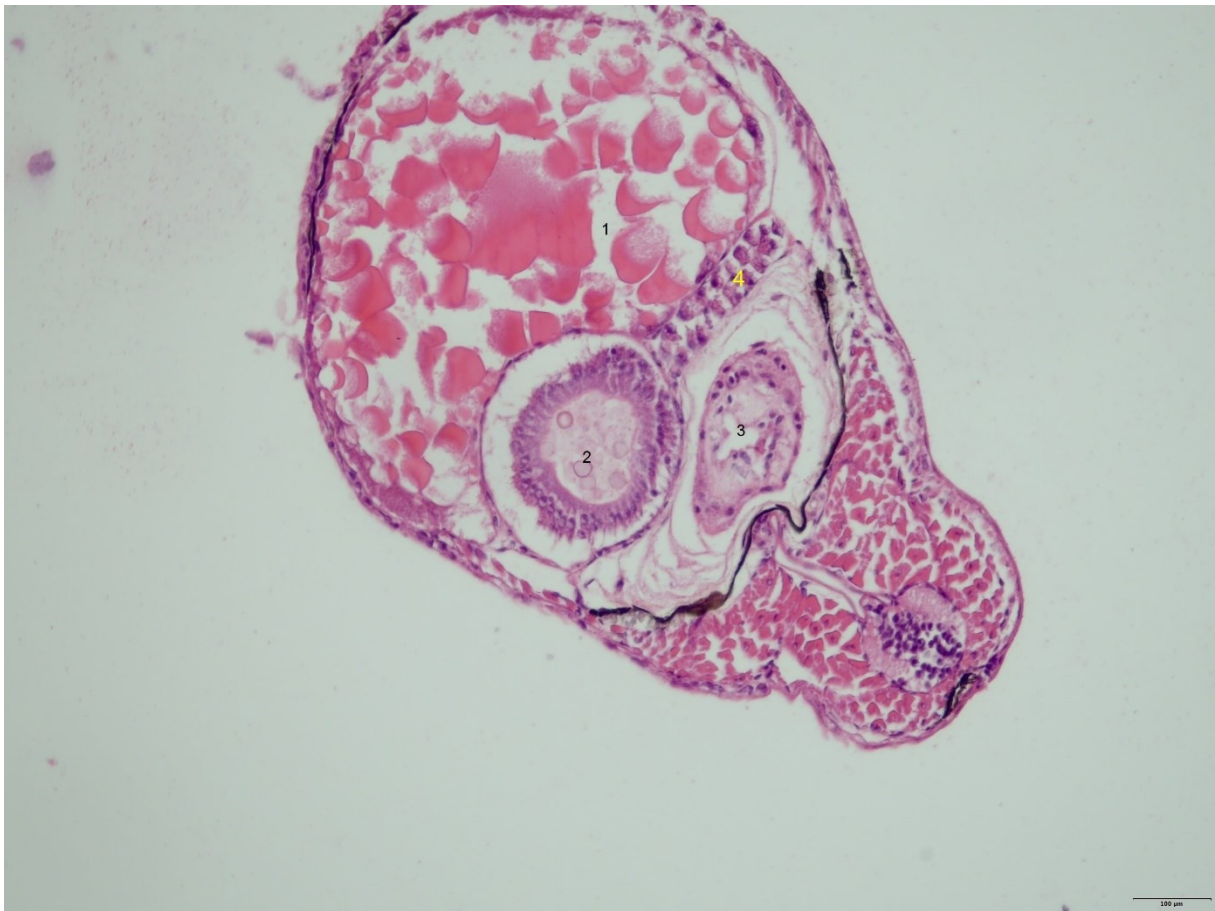
TE 18d

1 metanefros

2 nadledvina adrenal

3 pankreas

u kuřat může být vedle sebe mesonephros a metanephros, fungují v určitých stádiích dohromady a mesonephros je velké



Zebrafish 5d

1 žloutkový vak yolk sack

2 střevo

3 srdce - truncus arteriosus

4 pankreas