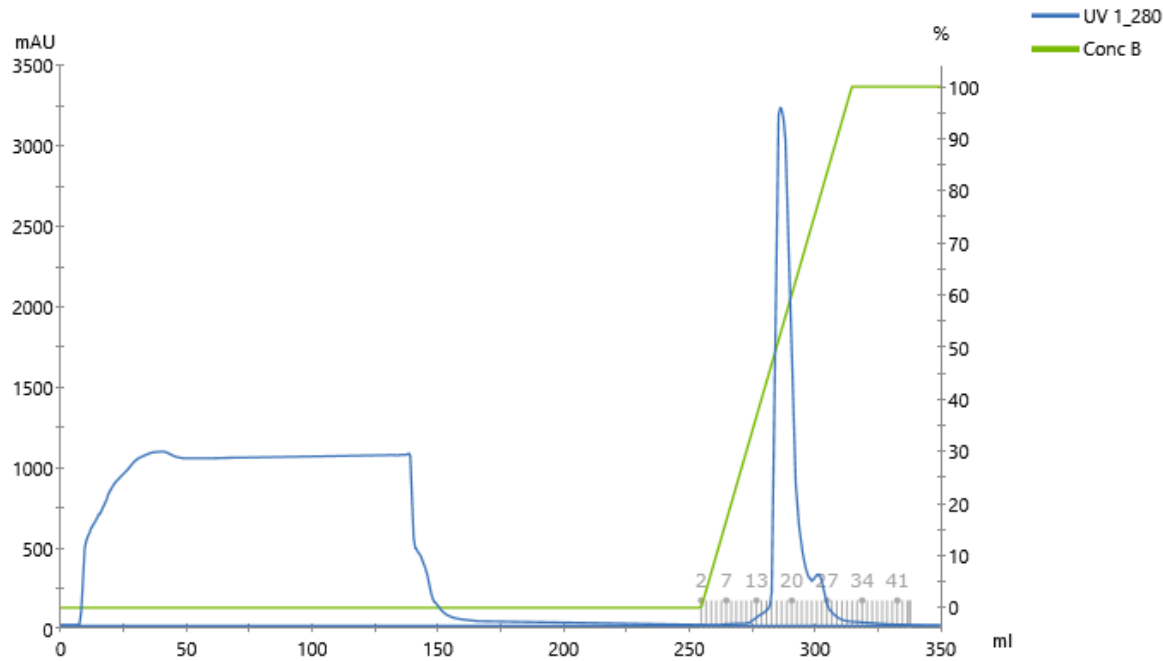
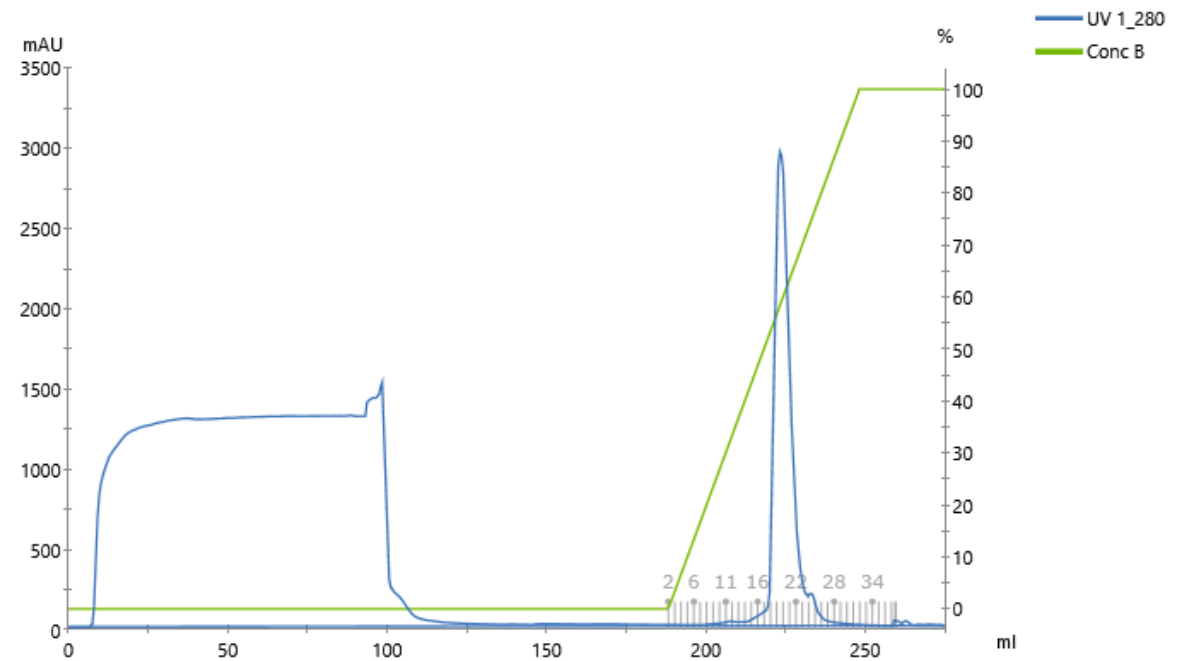


Kryptogein

Skupina A



Skupina B



Doplnit!

Vzorek:

Kolona:

Mobilní fáze A:

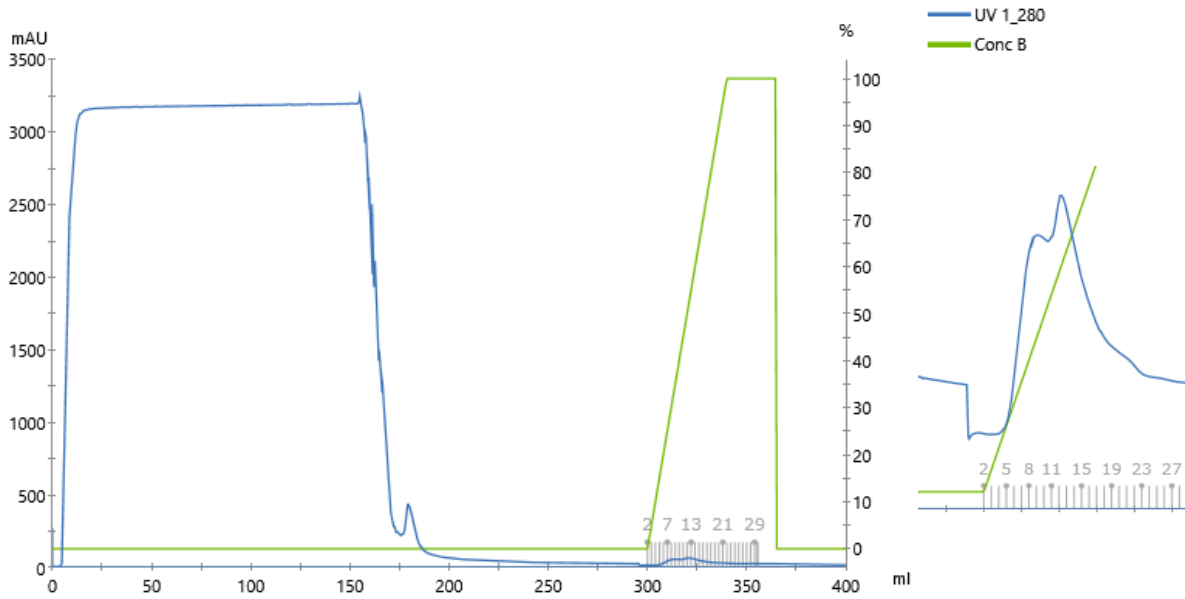
Mobilní fáze B:

Gradient:

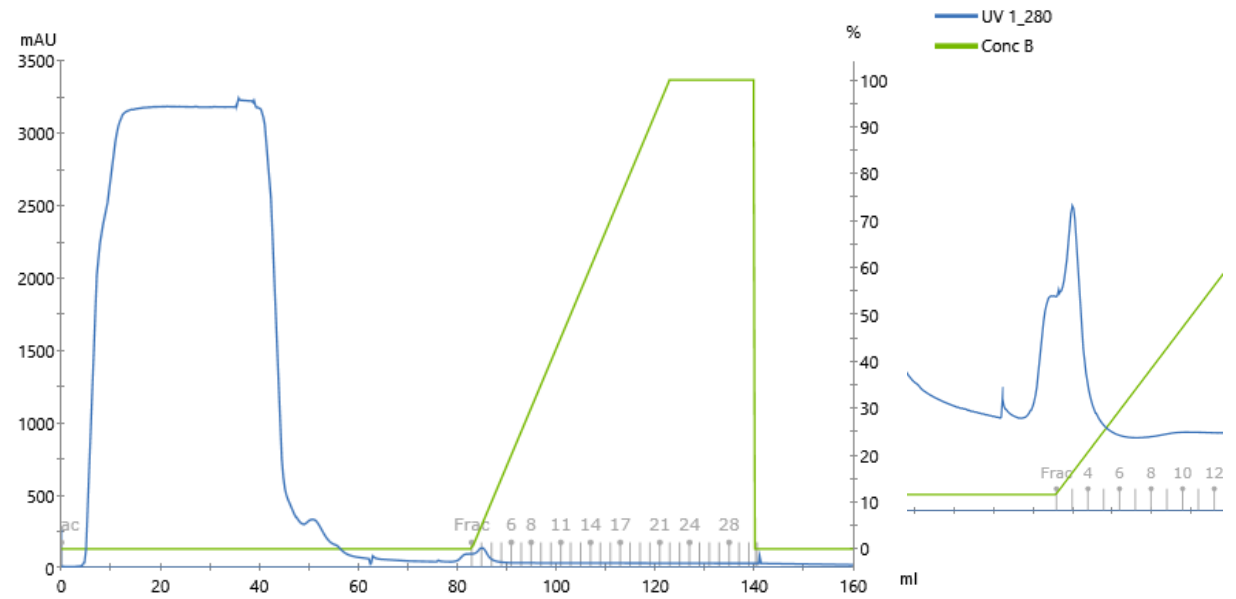
Průtok:

Glukosaoxidas

Skupina A



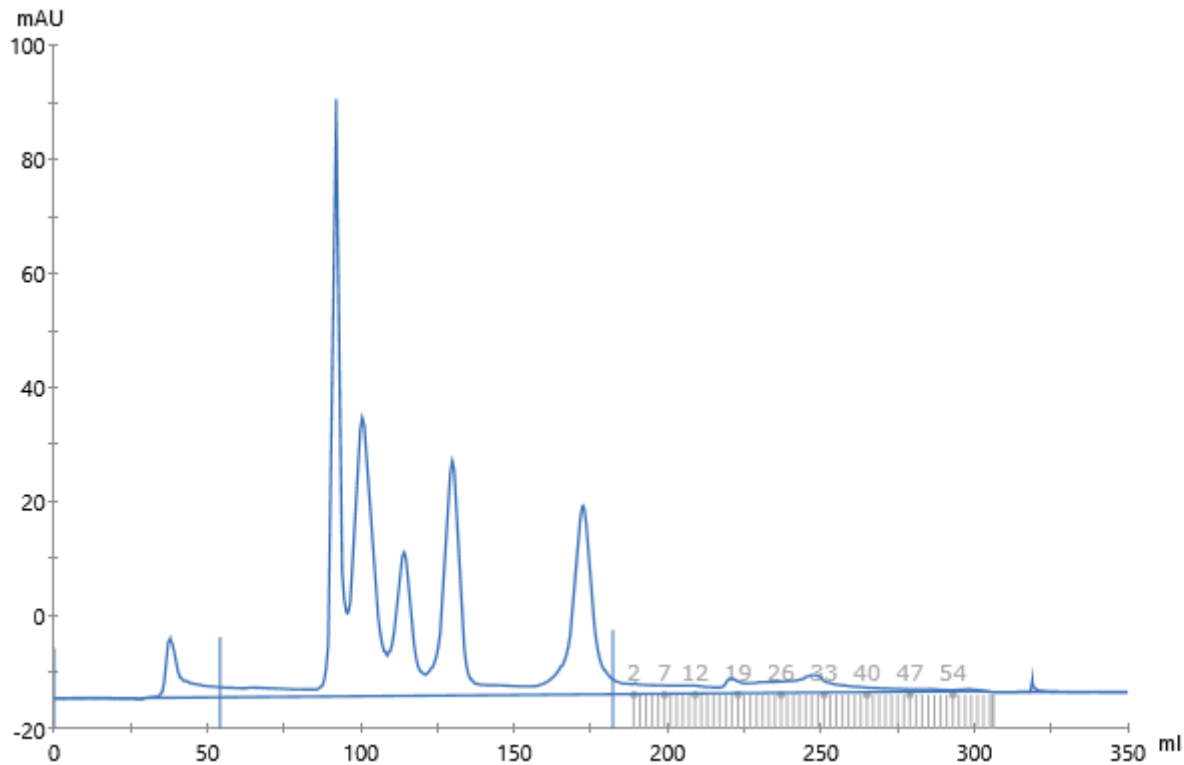
Skupina B



Doplnit!

Vzorek:
Kolona:
Mobilní fáze A:
Mobilní fáze B:
Gradient:
Průtok:

Glukosaoxidas



— UV 1_280

| | | |
|-------------------|-------------------|--------------|
| Blue Dextran 2000 | $V_0 = 37.70$ ml | |
| Thyroglobulin | $V_e = 37.75$ ml | MW = 670 000 |
| Gamma globulin | $V_e = 46.40$ ml | MW = 158 000 |
| Ovalbumin | $V_e = 59.90$ ml | MW = 44 000 |
| Myoglobin | $V_e = 75.65$ ml | MW = 17 000 |
| Vitamin B12 | $V_e = 118.25$ ml | MW = 1 350 |

Doplnit kalibrační křivku pro standardní proteiny!

| | | | |
|--------|------------------|------|----------|
| Peak 1 | $V_e = 38.20$ ml | MW = | Doplnit! |
| Peak 2 | $V_e = 65.47$ ml | MW = | |

Doplnit!

Vzorek:
 Kolona:
 Mobilní fáze A:
 Průtok: