



# GIS4SG

## Co nás čeká v příštích hodinách...

jaro 2023

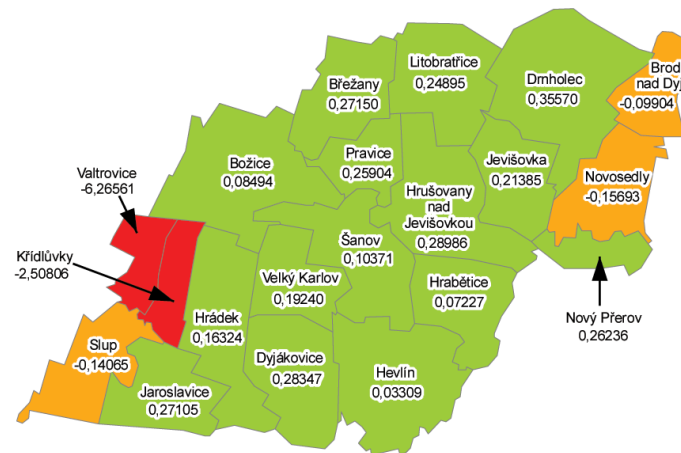
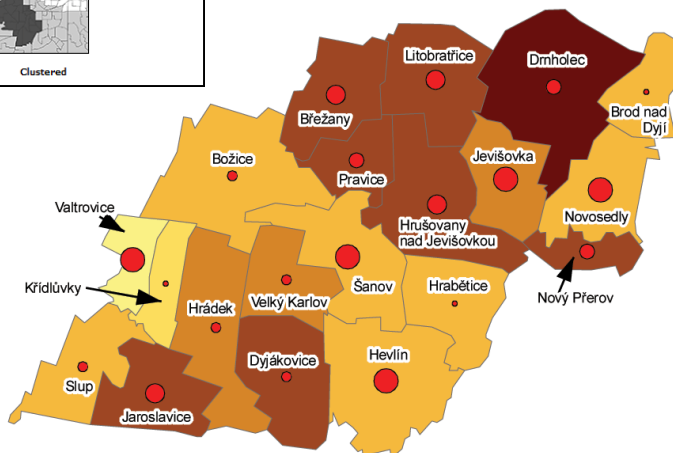
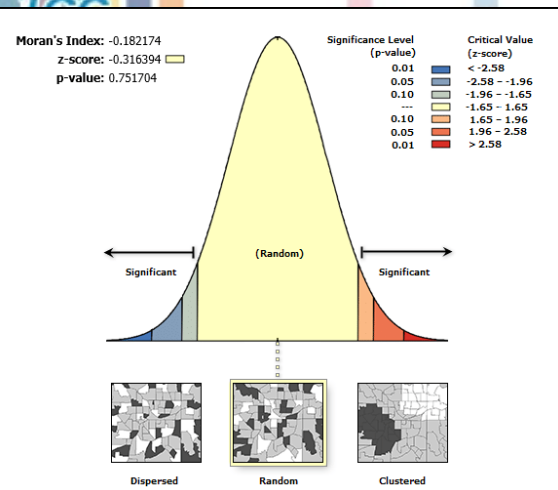
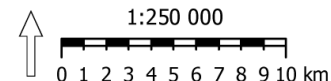
**Lukáš Herman**

[herman.lu@mail.muni.cz](mailto:herman.lu@mail.muni.cz)

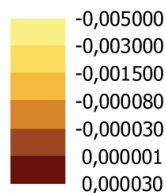
# Kartogramy, klasifikace, normalizace, prostorové autokorelace

## PROSTOROVÁ AUTOKORELACE ZASTOUPENÍ SENIORŮ VE 20 VYBRANÝCH OBCÍCH JIHMORAVSKÉHO KRAJE

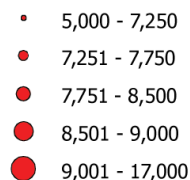
k 31. 12. 2009



### Moranův index

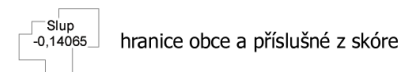
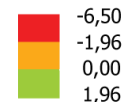


### Poměr obyvatel starších 64 let



### Z skóre

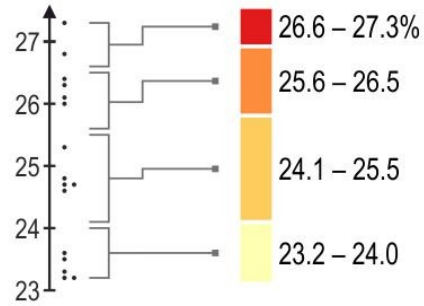
#### Moranův indexu





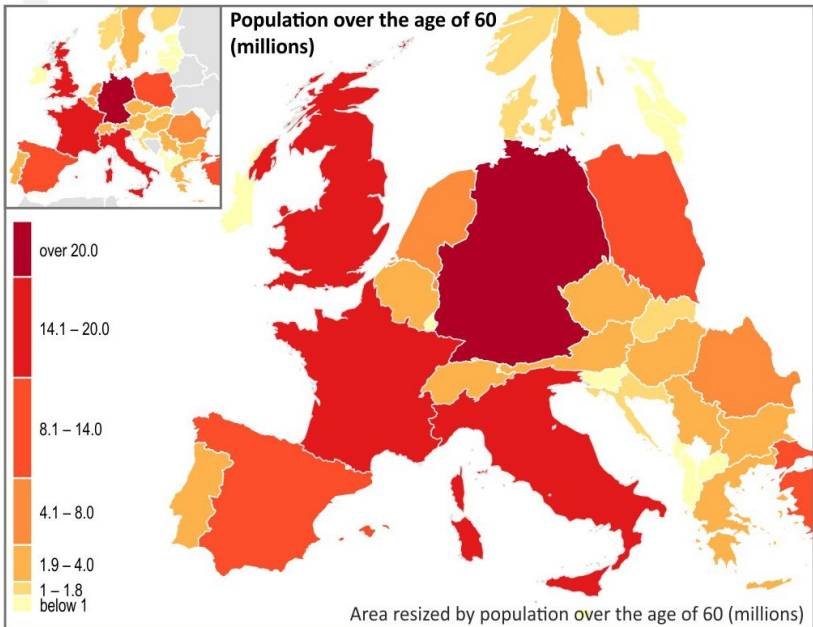
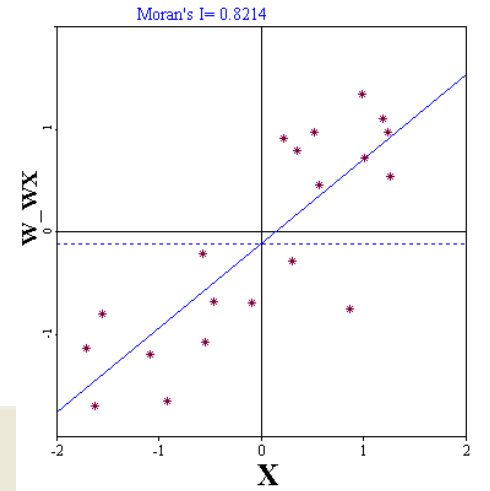
# Kartogramy, klasifikace, normalizace, prostorové autokorelace

base map and data → classification → symbolisation → choropleth map



Share of population over the age of 60

data: Eurostat, © EuroGeographics for the administrative boundaries



Moran's I Index = -0,14  
Z Score = -2,73 standard deviations

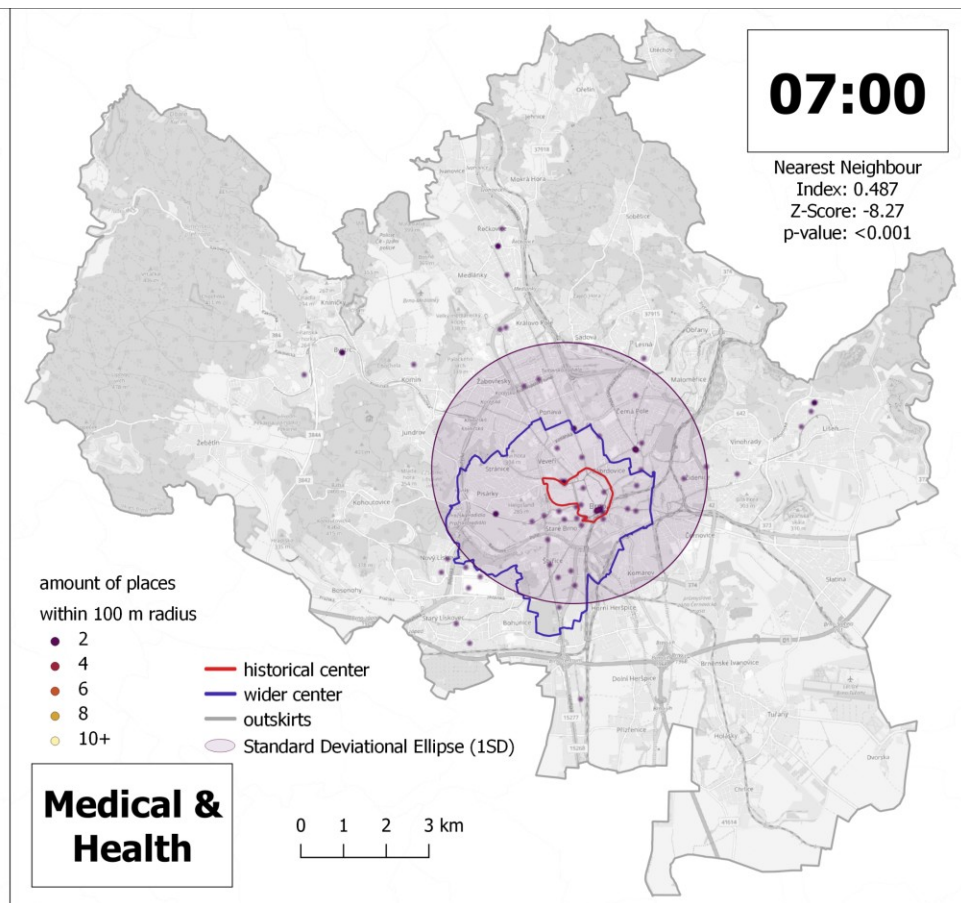
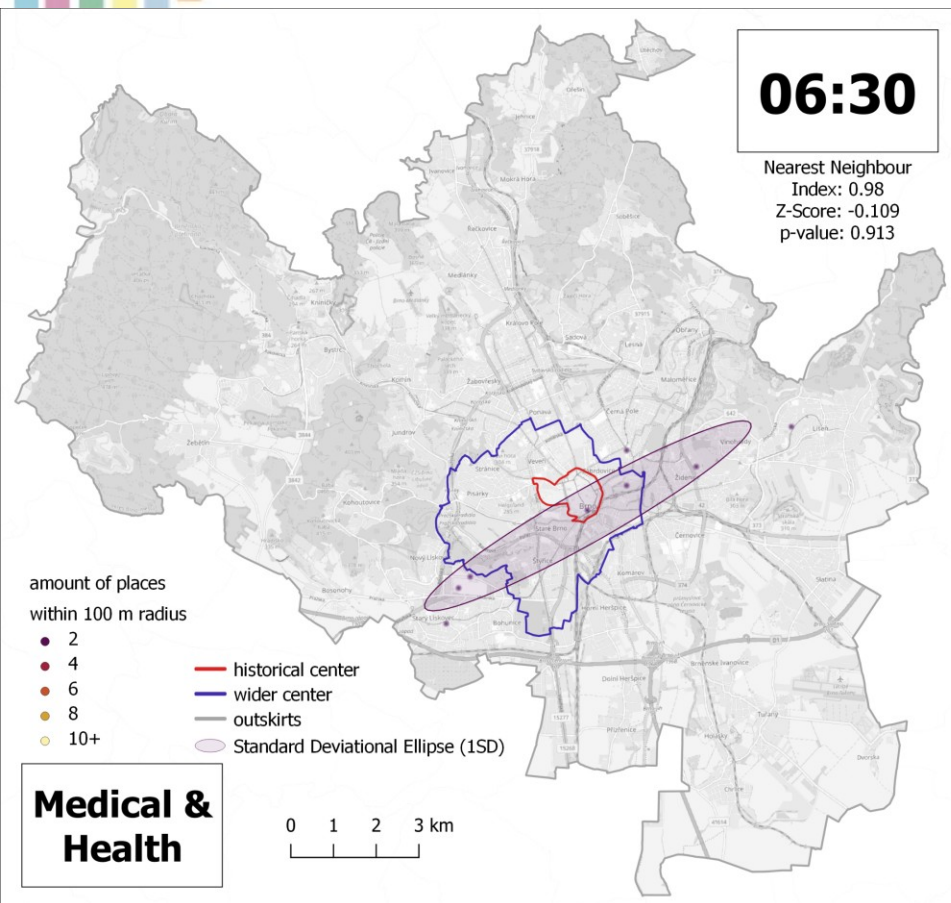
Dispersed Clustered

Significance Level:	0.01	0.05	0.10	RANDOM	0.10	0.05	0.01
Critical Values:	(-2.58)	(-1.96)	(-1.65)		(1.65)	(1.96)	(2.58)

There is less than 1% likelihood that this dispersed pattern could be the result of random chance.



# Statistický popis bodů, Kernel density,

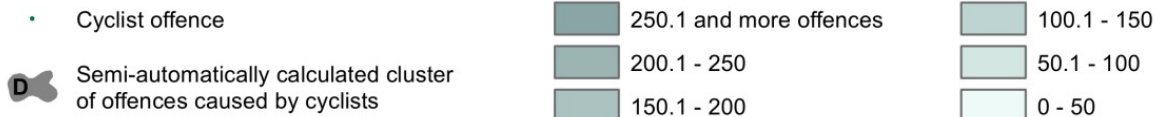




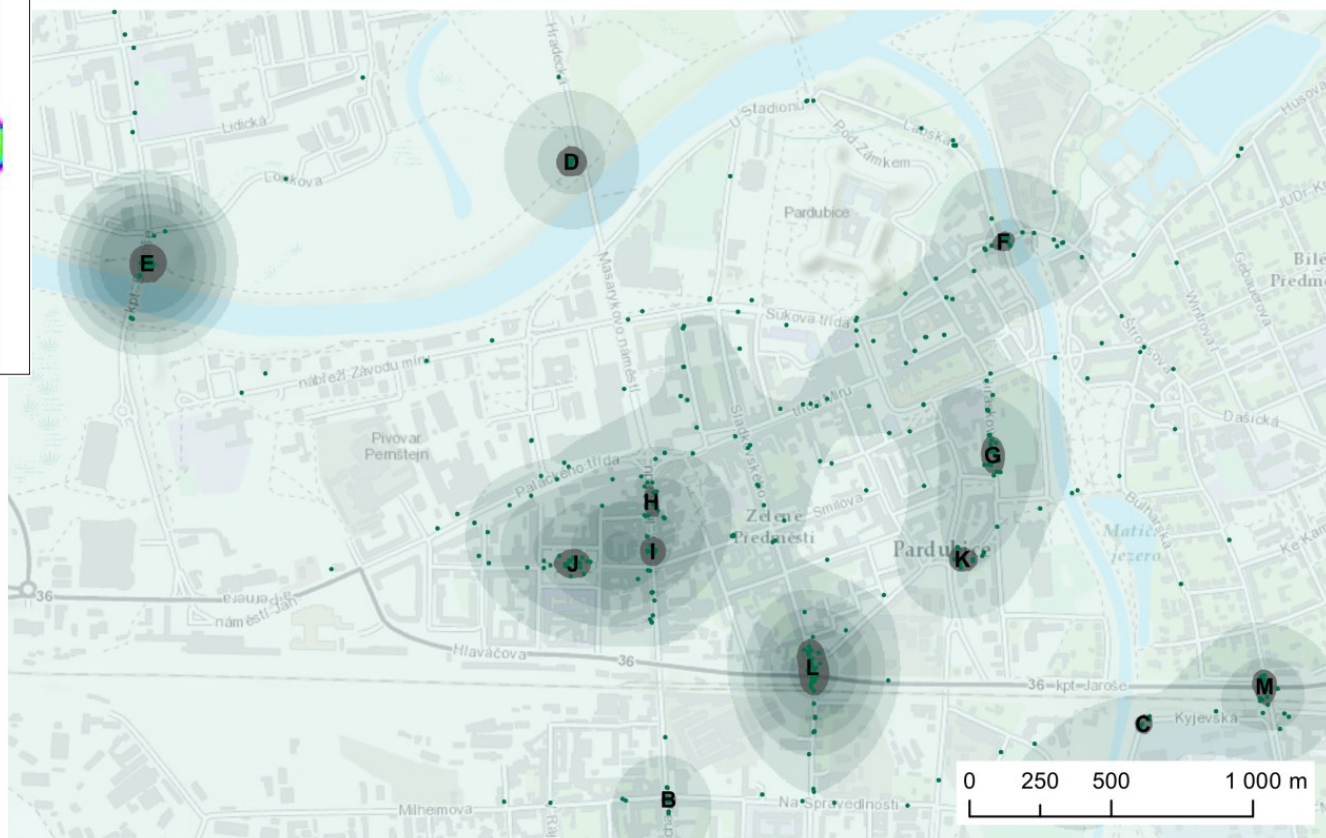
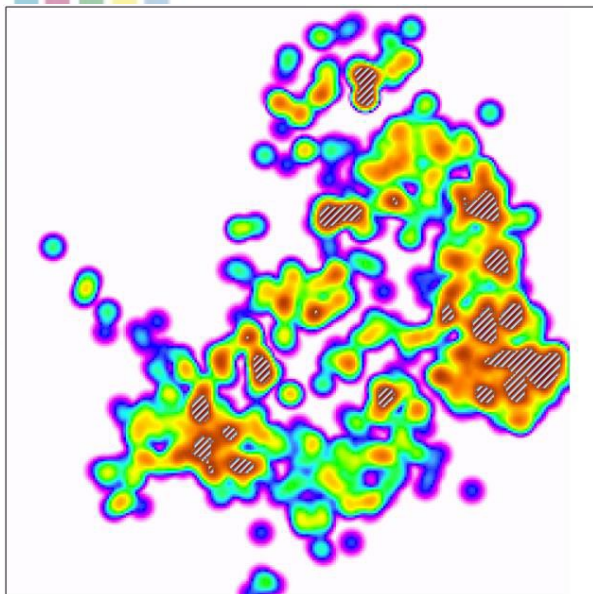
# Statistický popis bodů, Kernel density

## OFFENCES CAUSED BY CYCLISTS IN CITY OF PARDUBICE IN 2014

Number of offences caused by cyclists per square kilometer



source: Municipal police of Pardubice, ESRI Basemap





## Co dále ...

- Data od mobilních operátorů
- Analýzy kriminality
- Zdravotnická – jejich vizualizace a analýzy
- Doprava
  - Stat. hodnocení sítí
- „Složitější“ vizualizace
  - Anamorfóza
  - Flow-maps
  - Space-time-cube