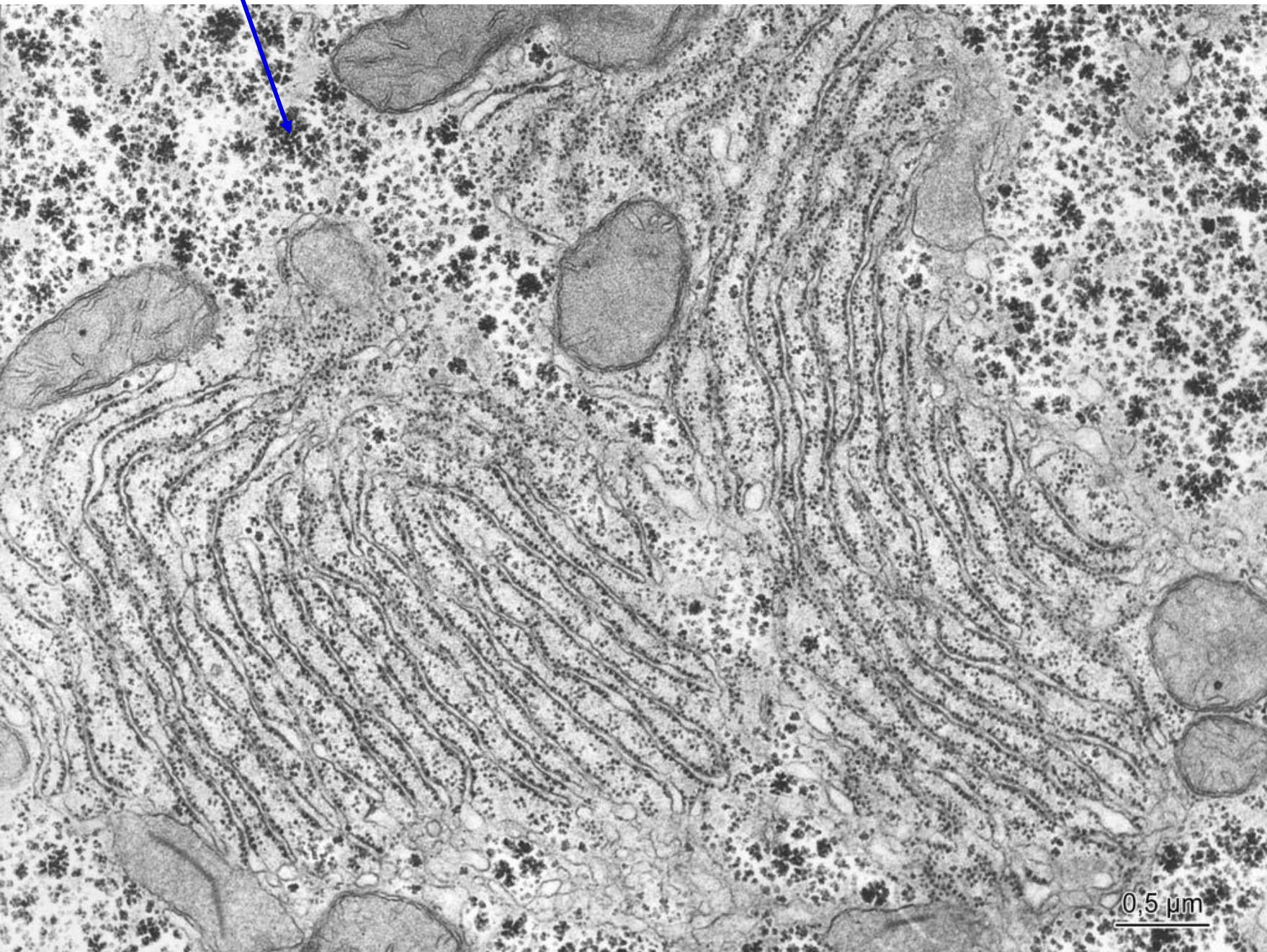


CYTOLOGIE II

Buněčné inkluze. Cytoskelet. Modifikace buněčných povrchů. Mezibuněčné spoje.

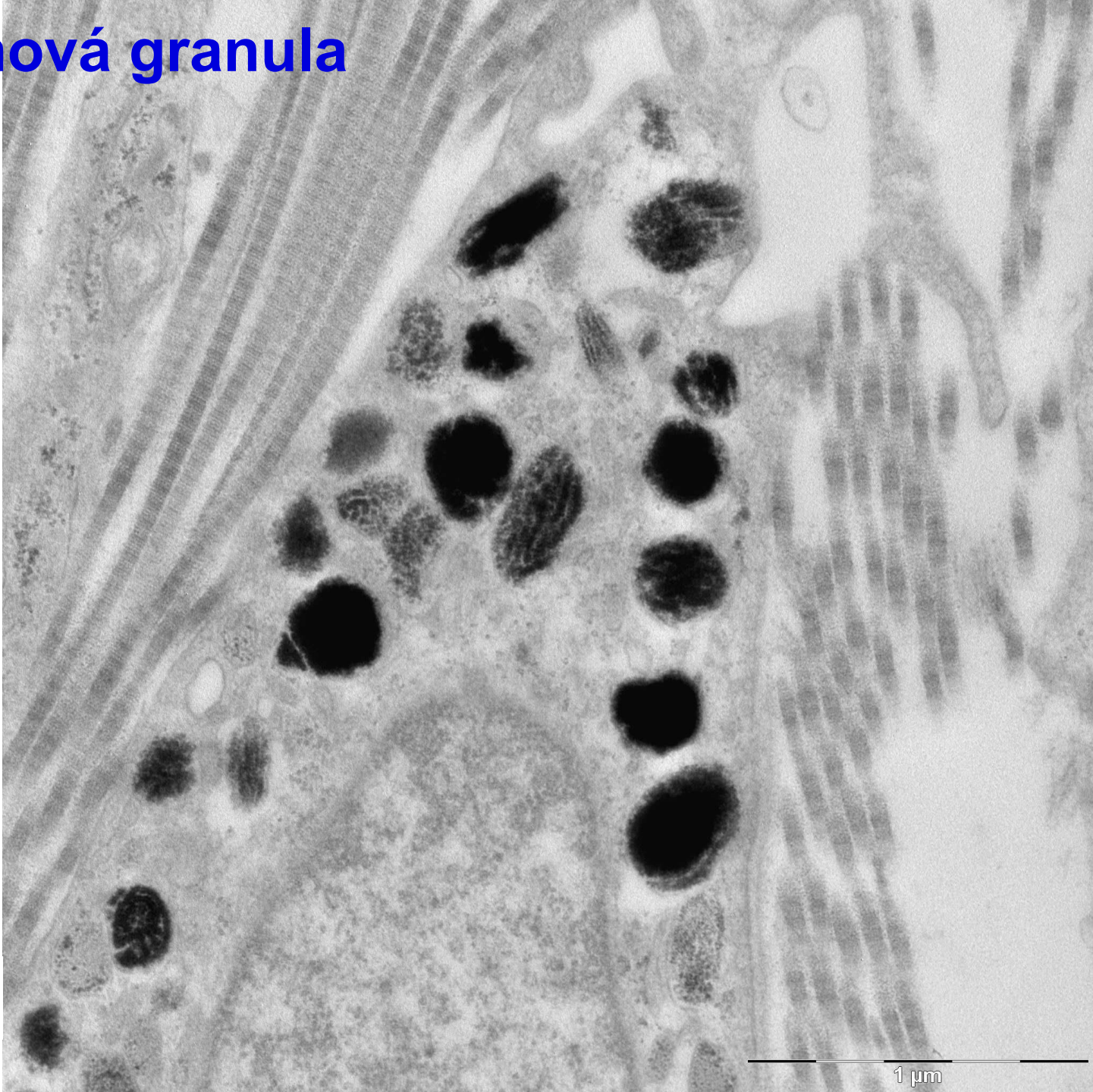
CYTOLOGICKÝ A EMBRYOLOGICKÝ ATLAS

glykogen – α granula



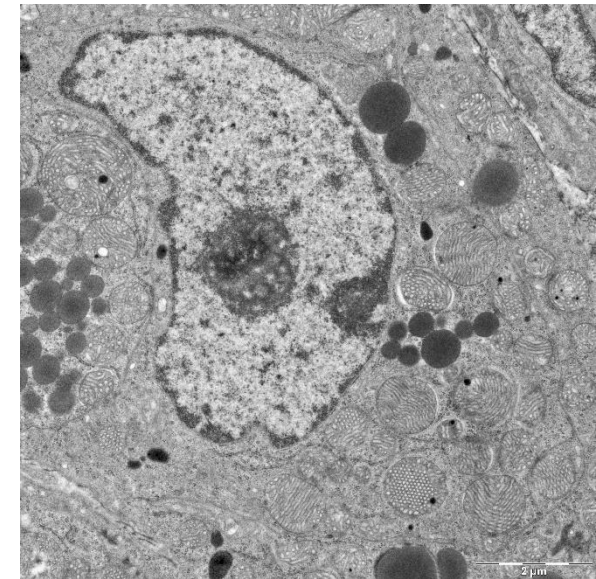
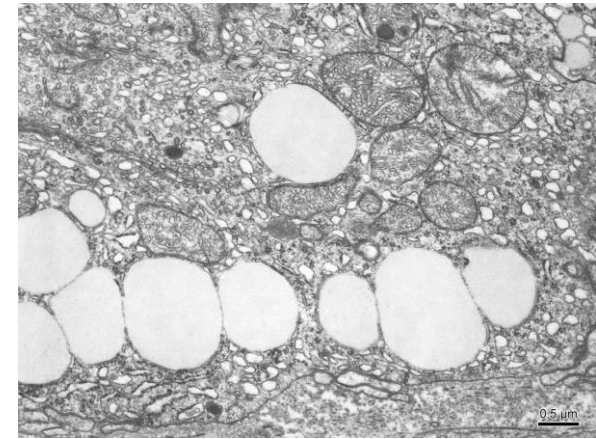
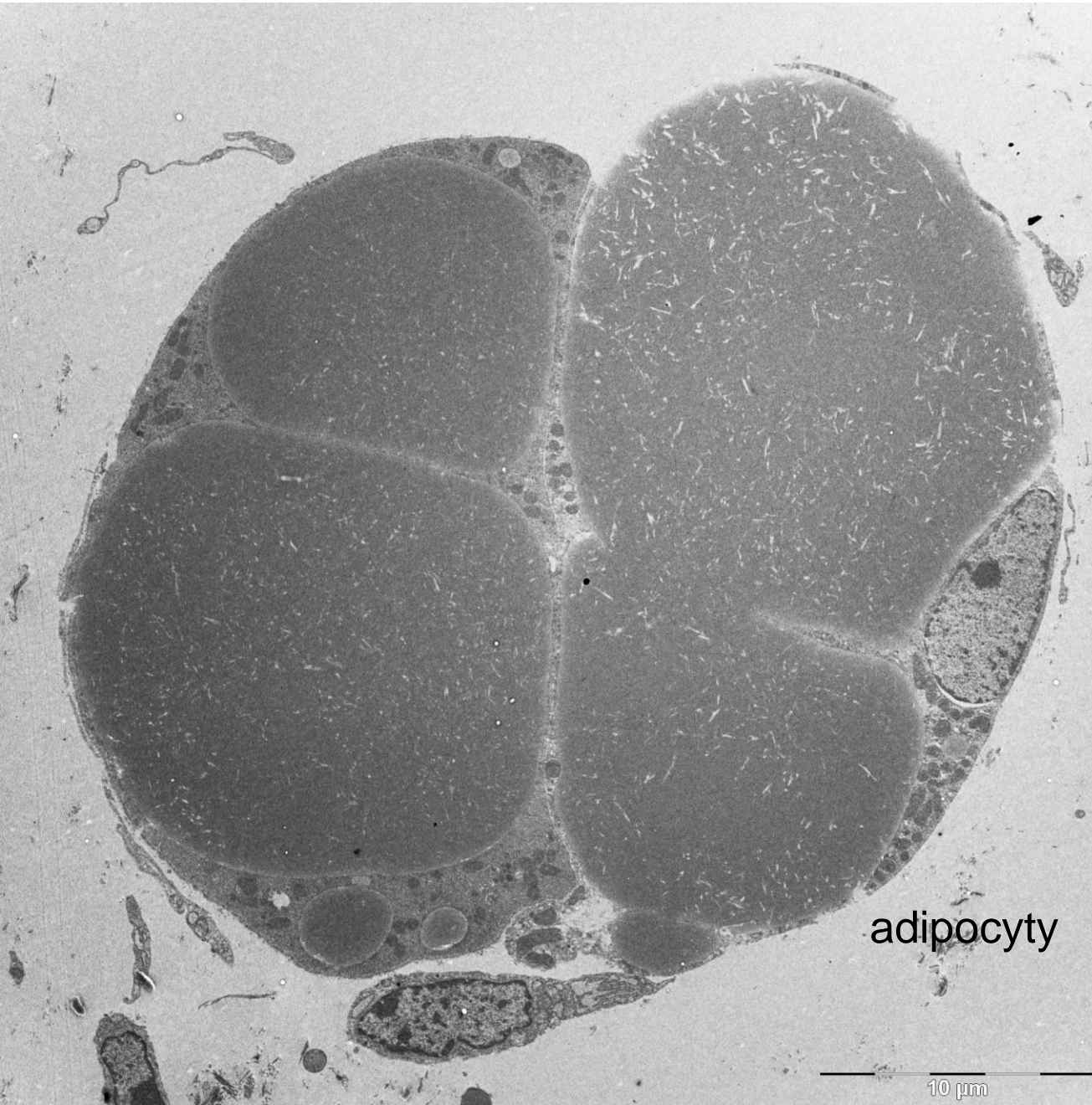
N I
D

melaninová granula

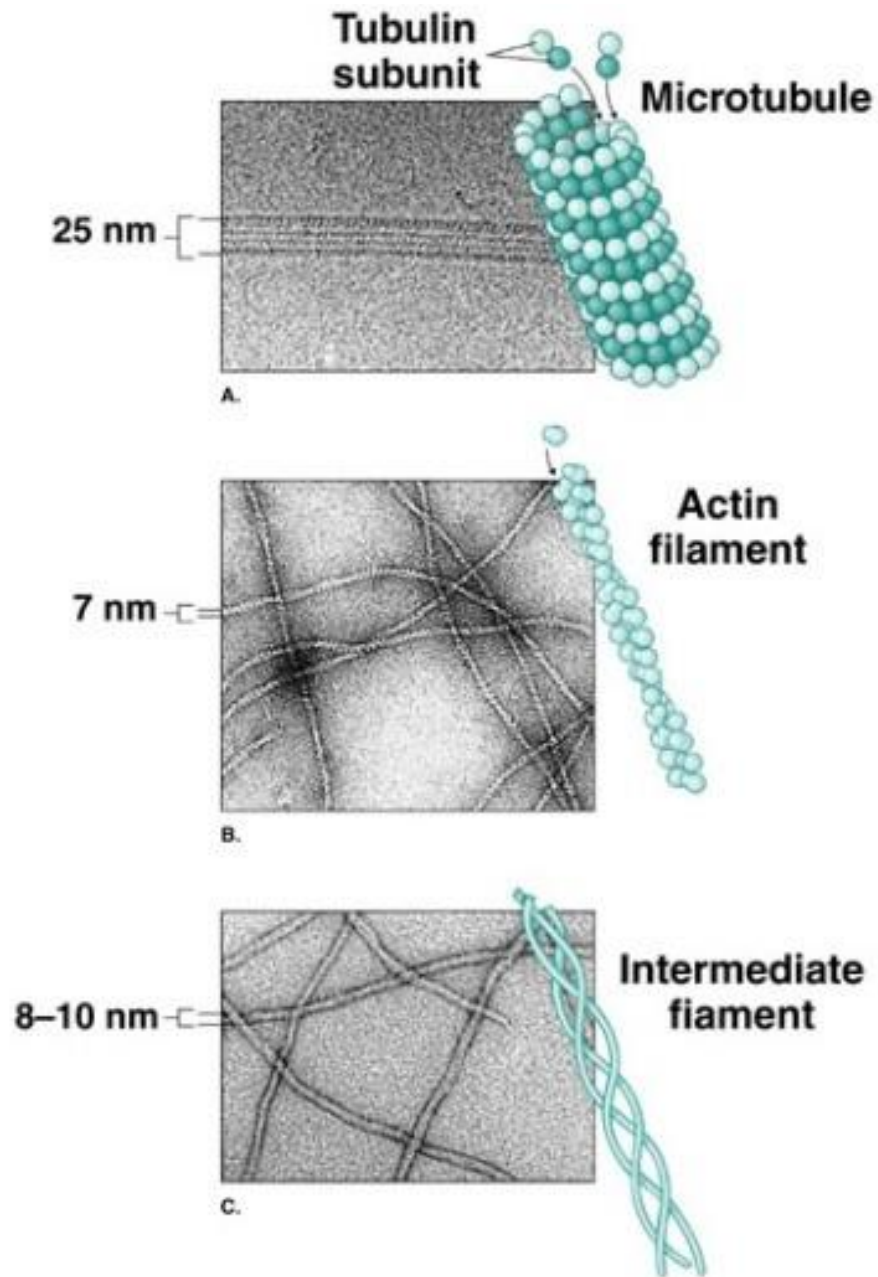


N I
D

lipidové kapky



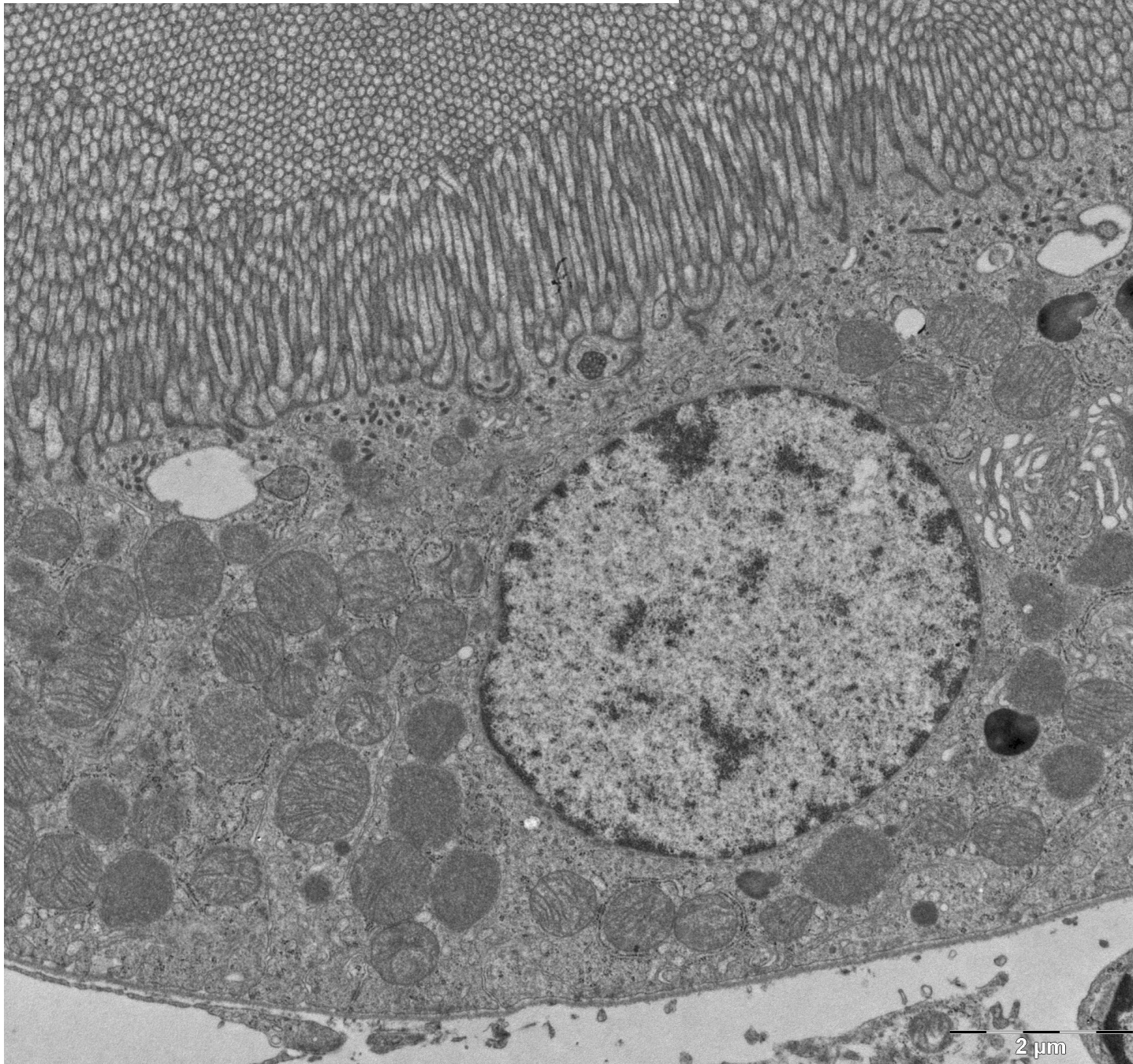
steroidogenní buňky



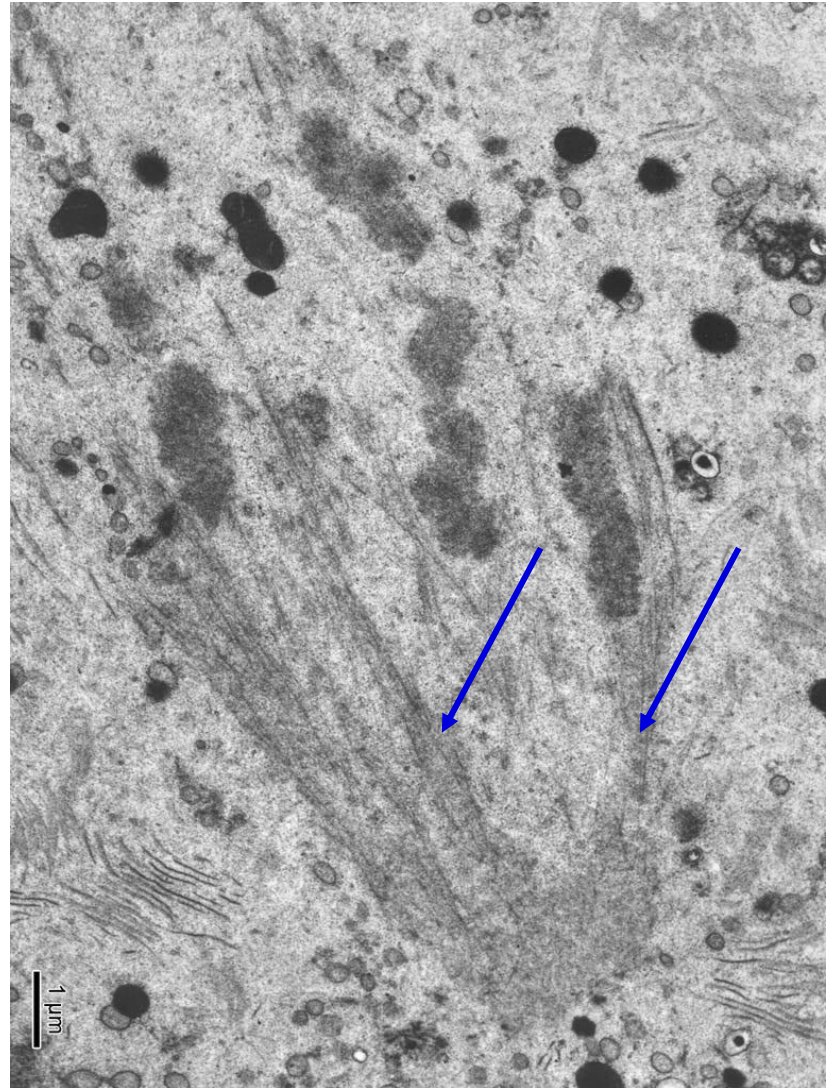
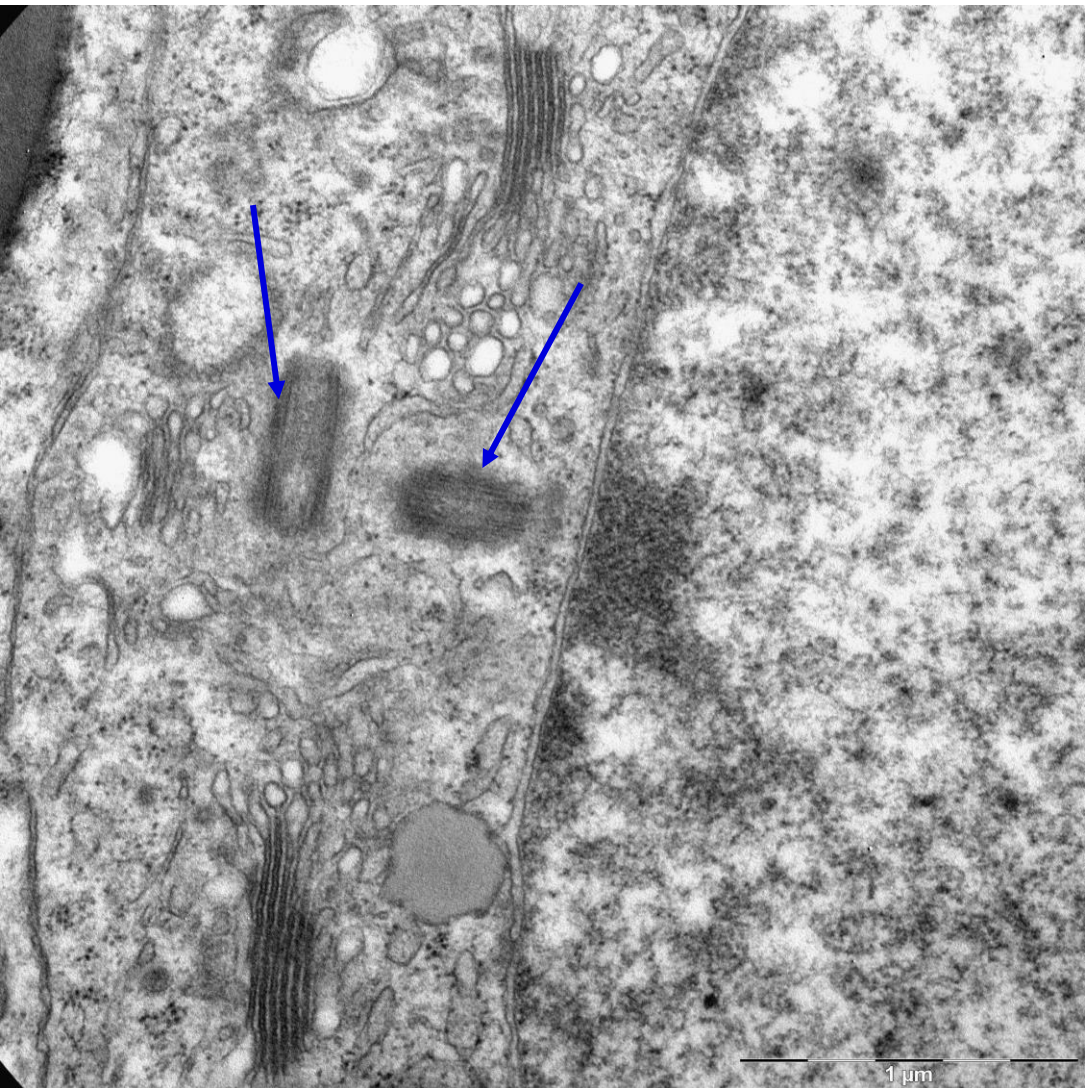
mikroklky – žíhaný lem



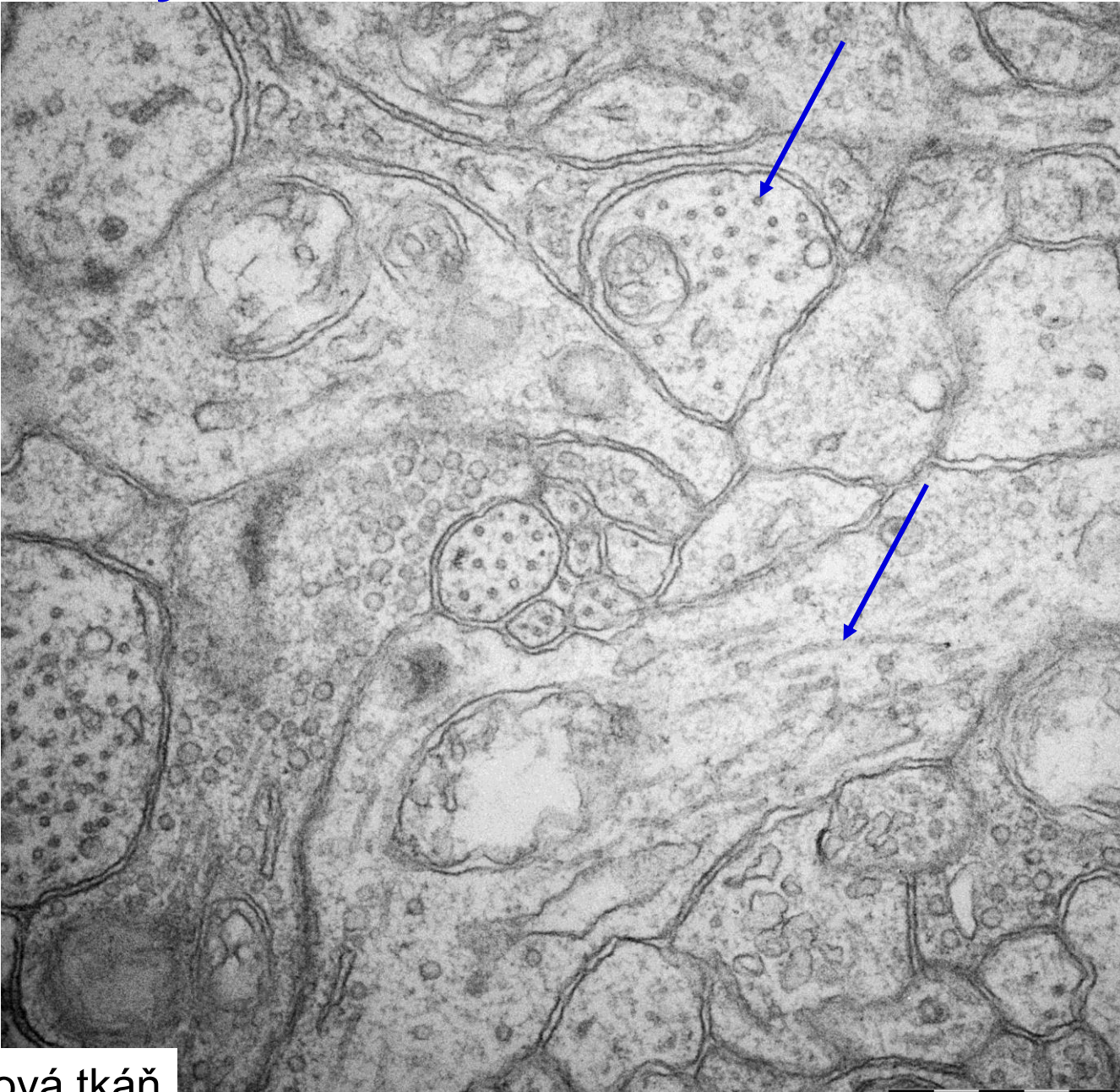
mikroklky – kartáčový lem



mikrotubuly



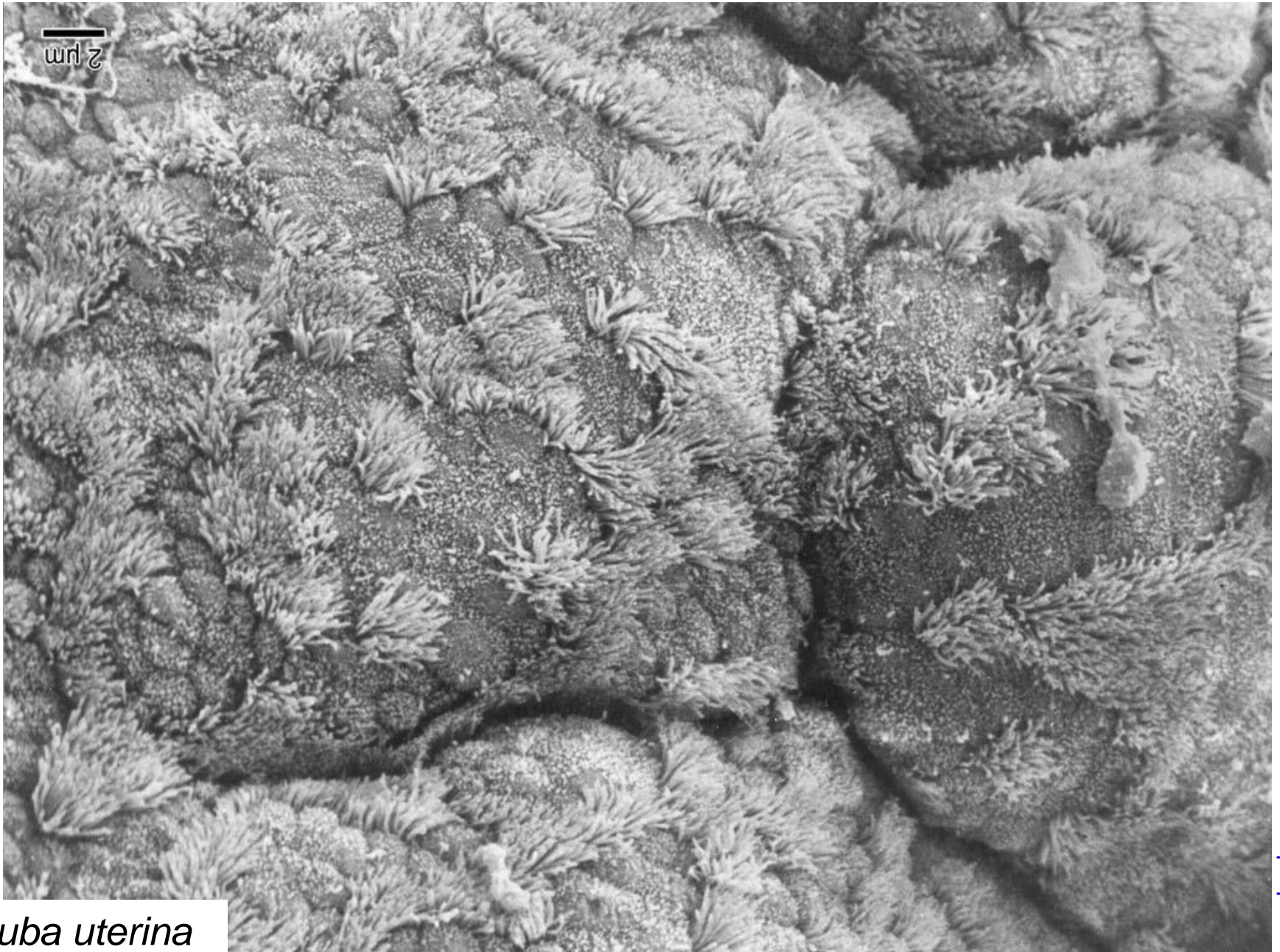
mikrotubuly



nervová tkáň

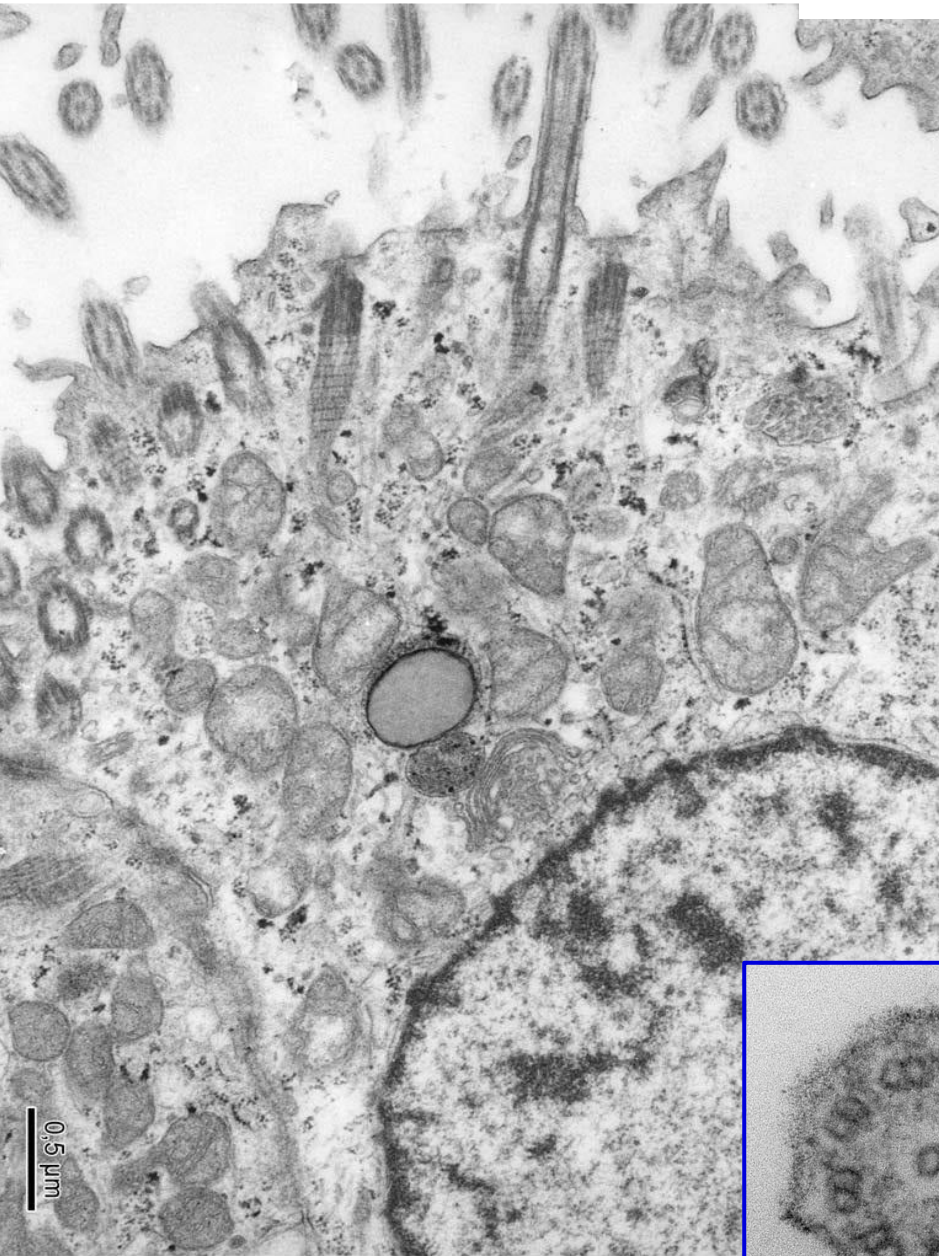
500 nm

mikroklky a řasinky (kinocilie)

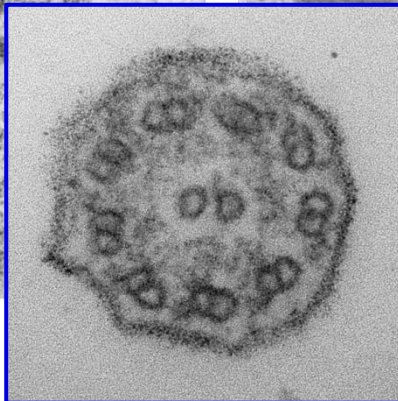


tuba uterina

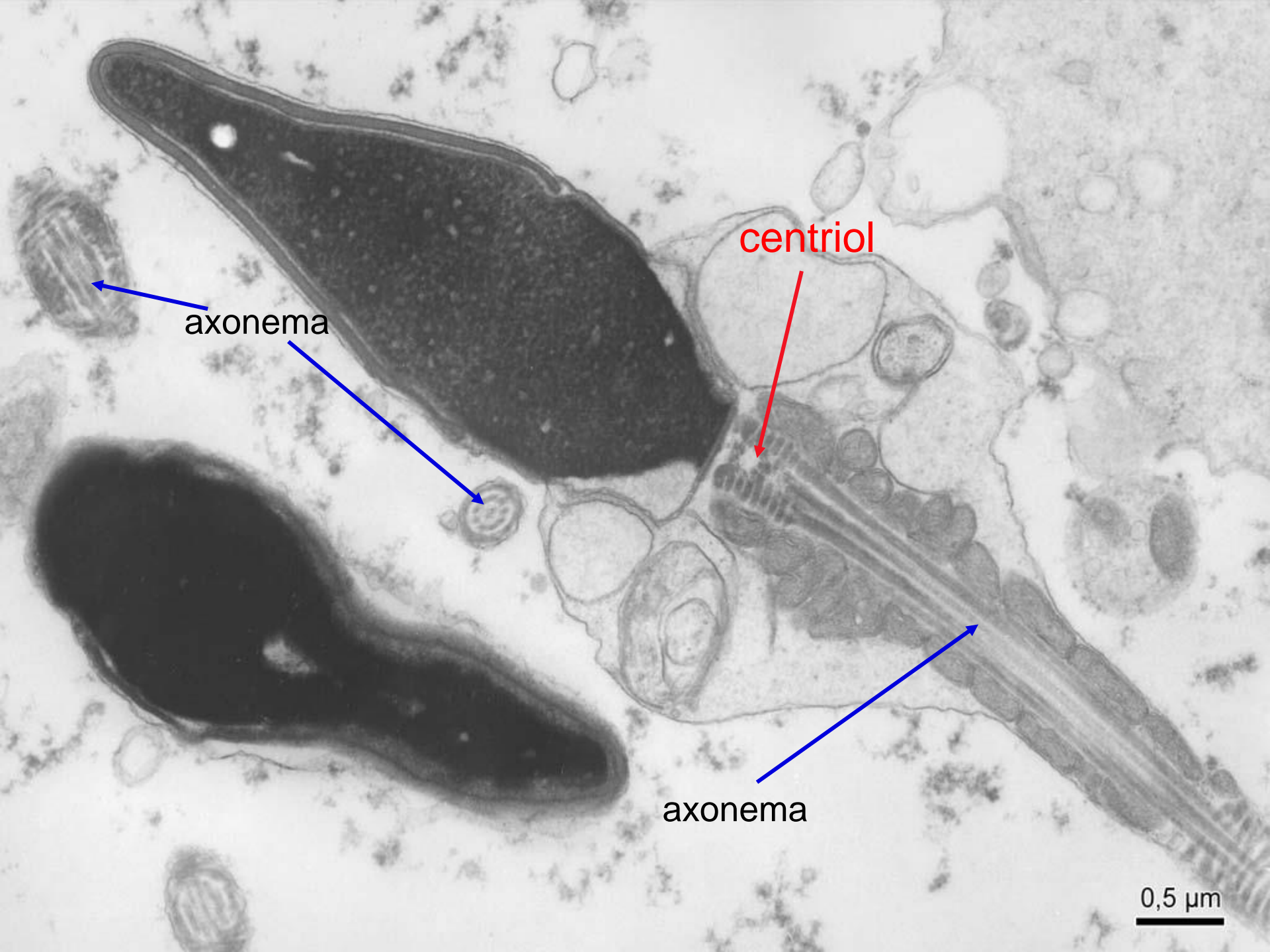
kinocilie



axonema



MED



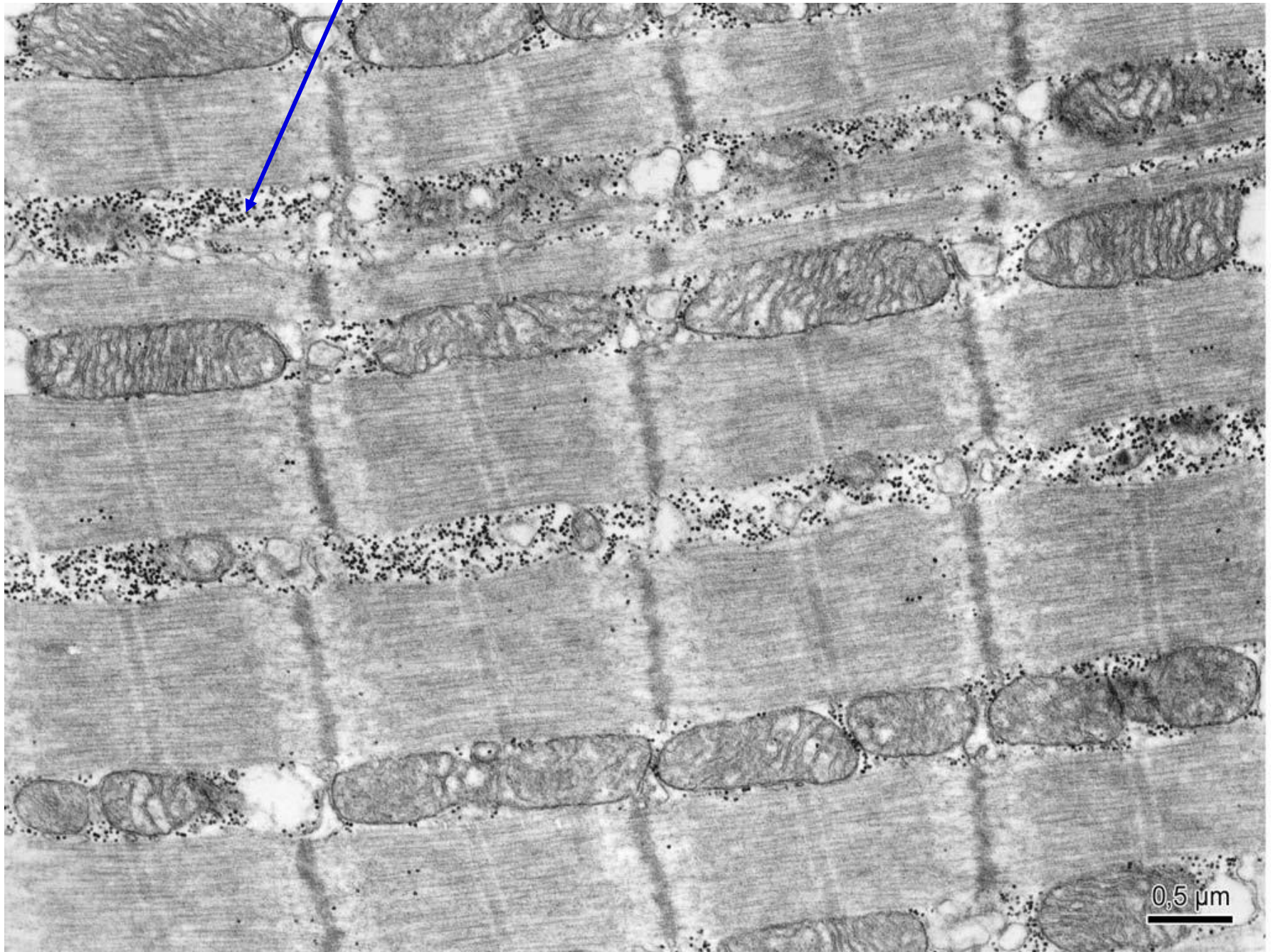
axonema

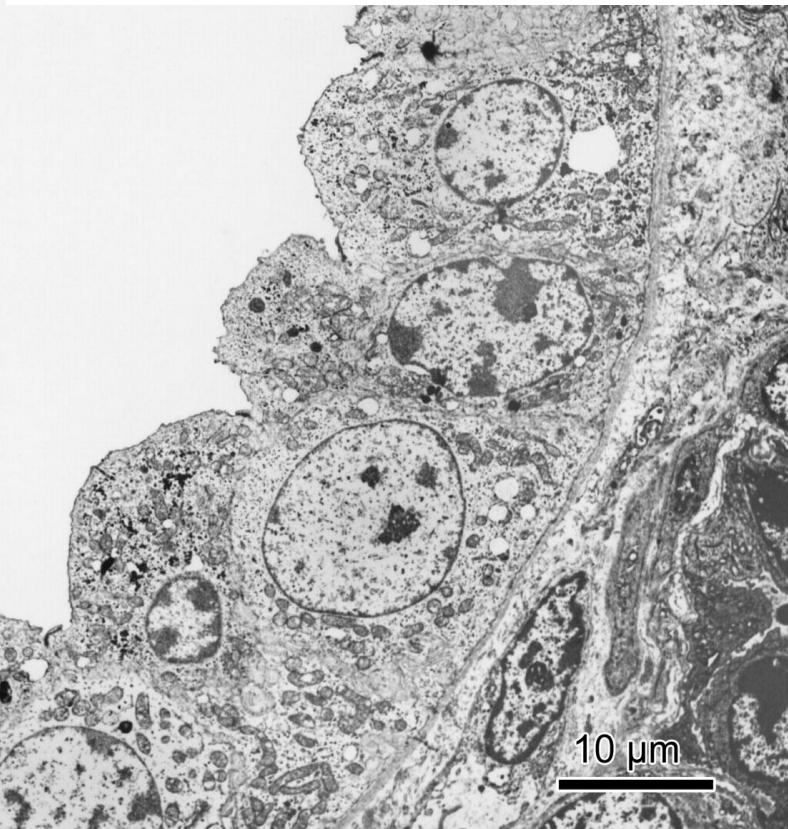
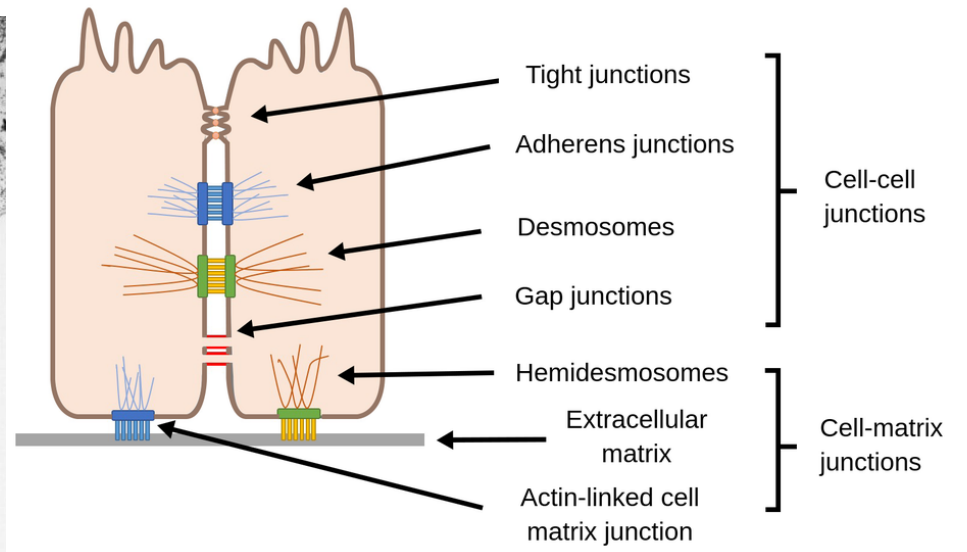
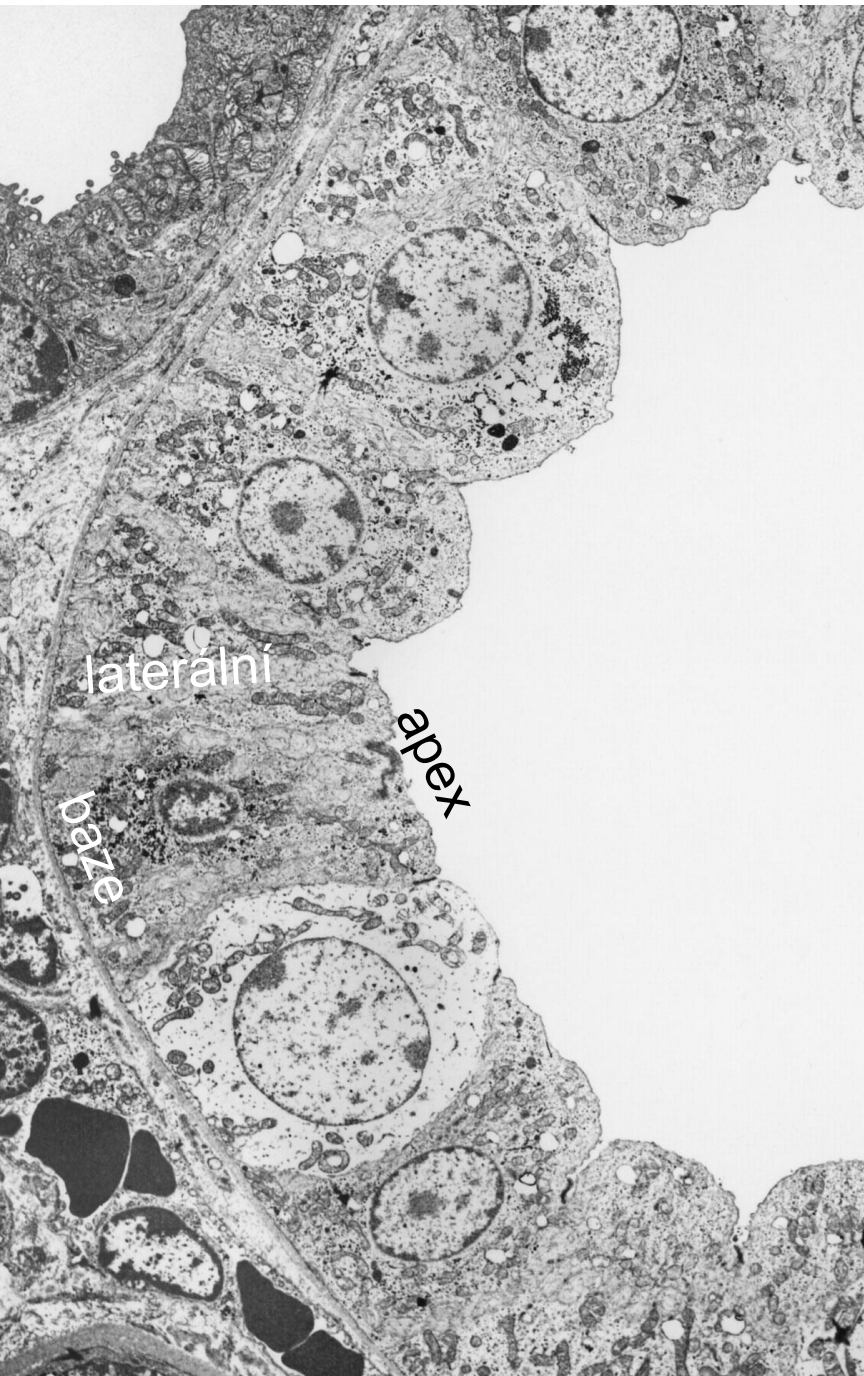
centriol

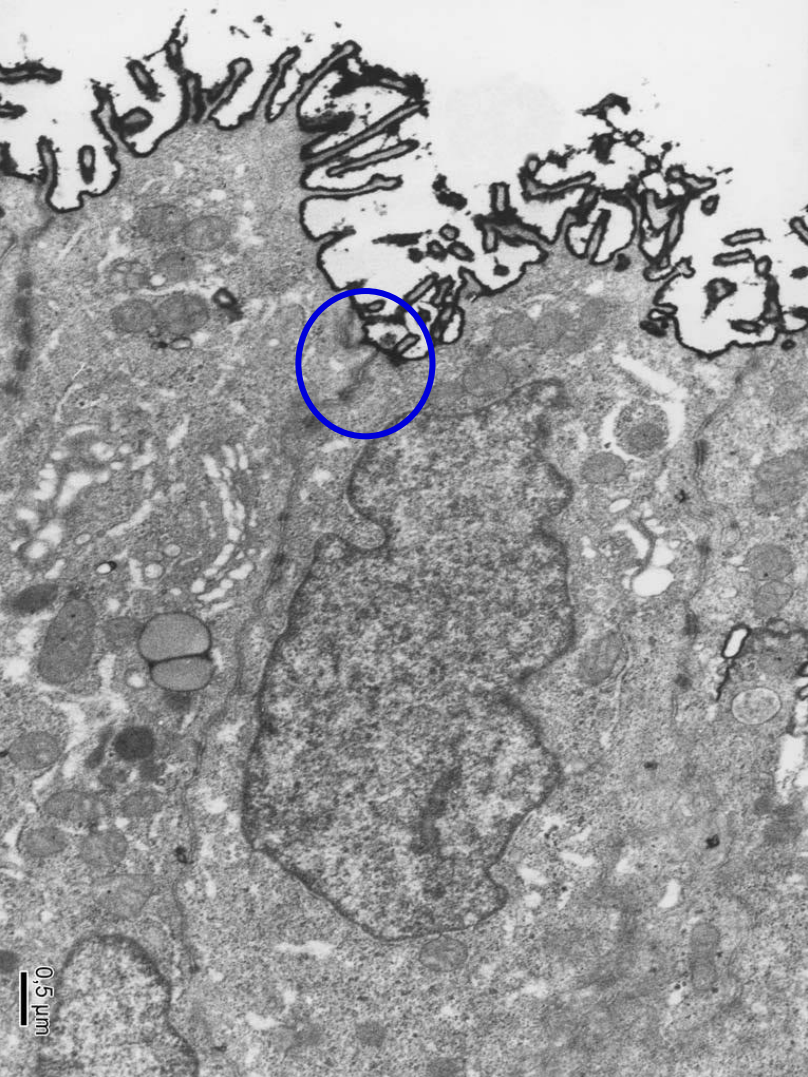
axonema

0,5 μ m

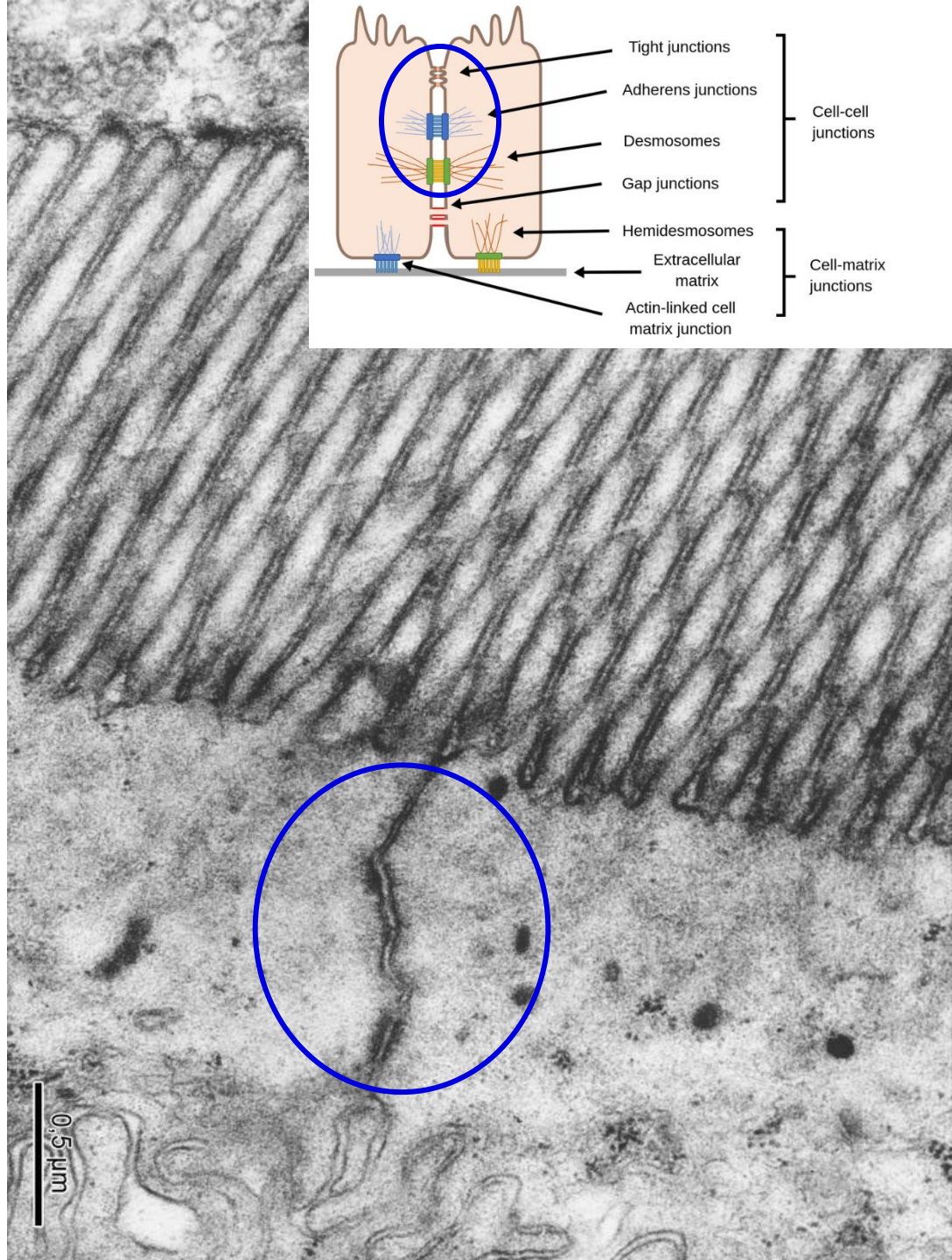
glykogen – β granula, aktinová a myosinová filamenta



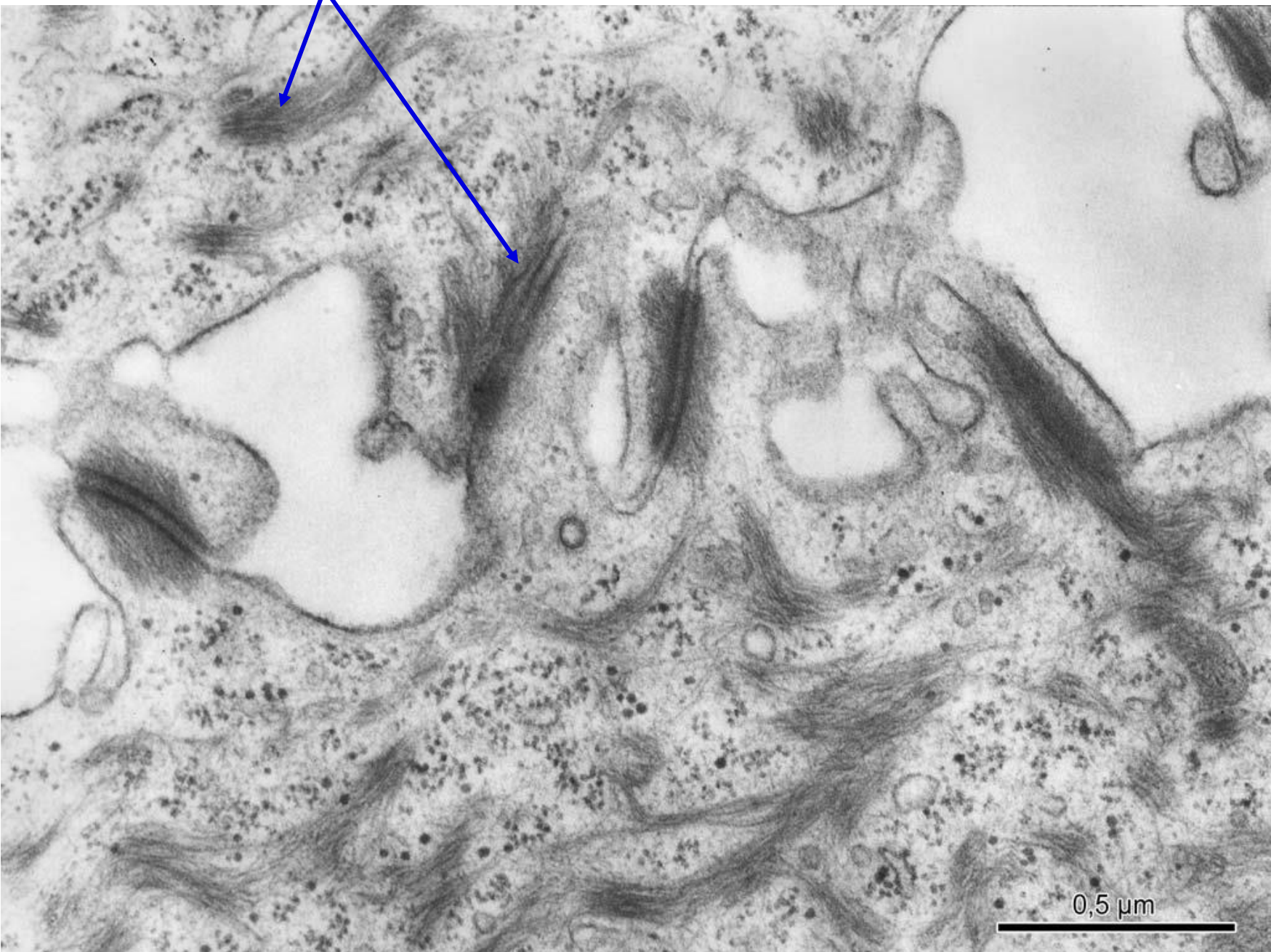




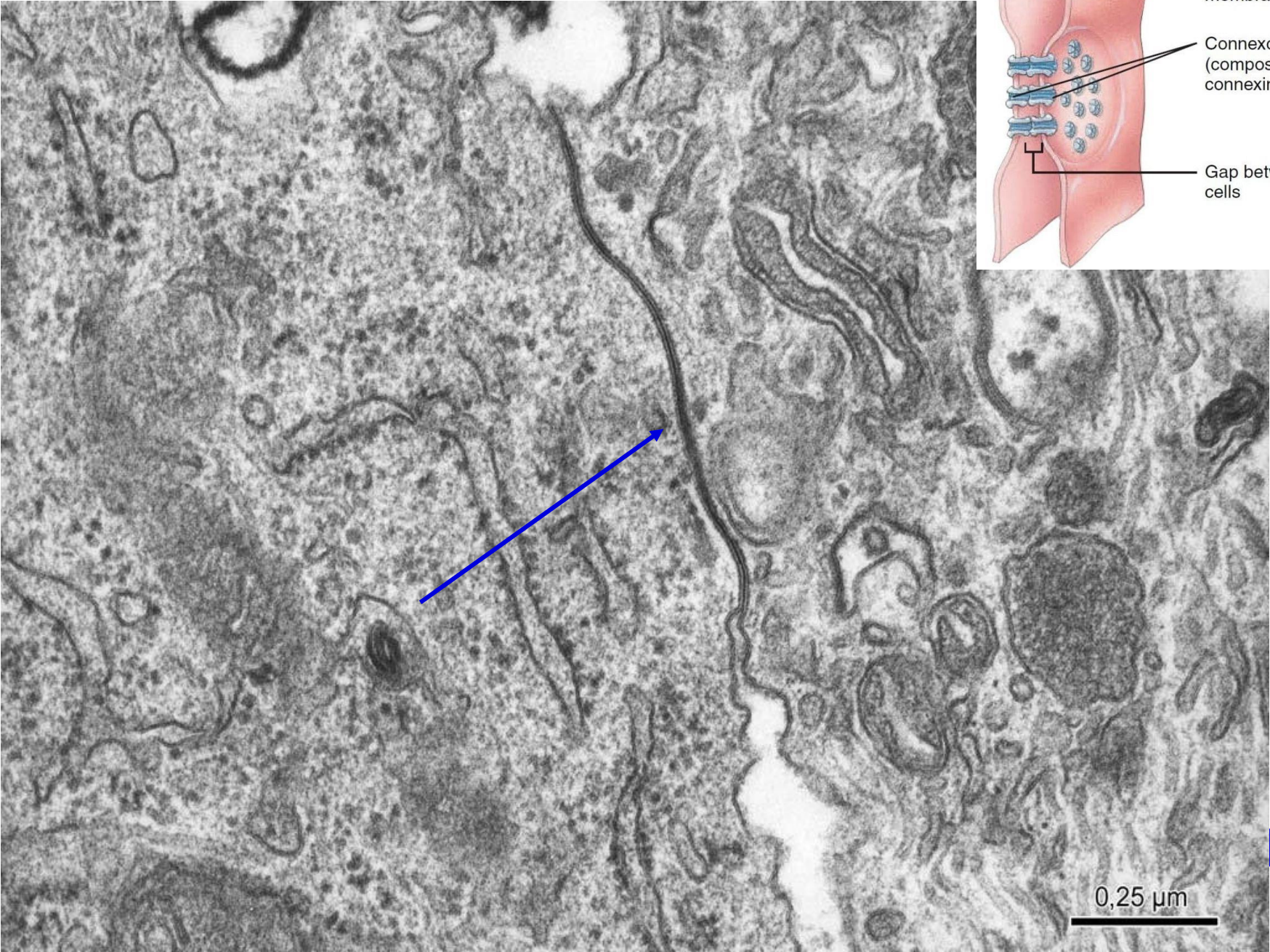
terminální lišta



intermediární filamenta

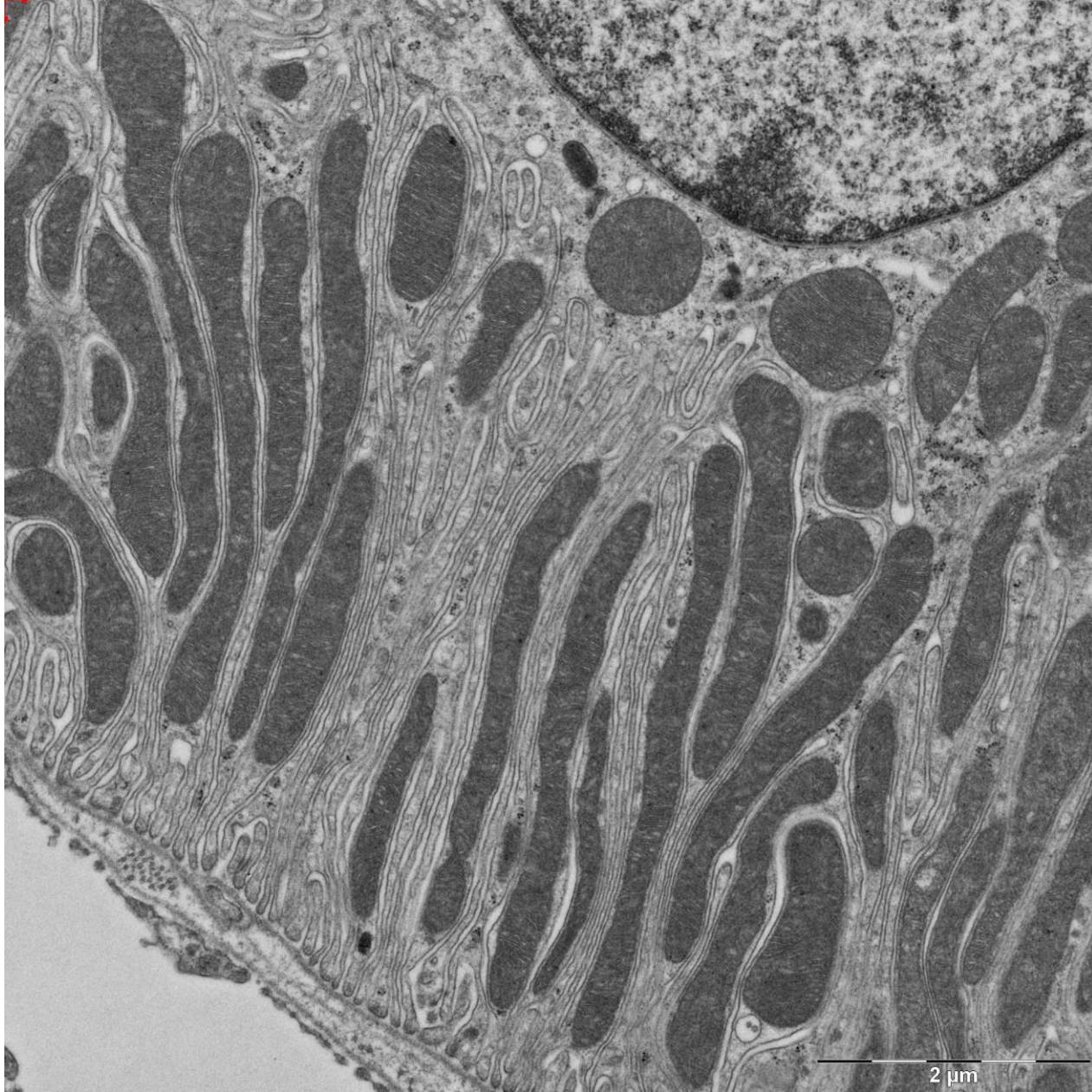


nexus



bazální labyrint

– invaginace membrány + mitochondrie



bazální membrána

- *lamina basalis* – *lamina lucida* + *lamina densa*
- *lamina fibroreticularis*

