

# Afinní Transformace

Dominik Heger

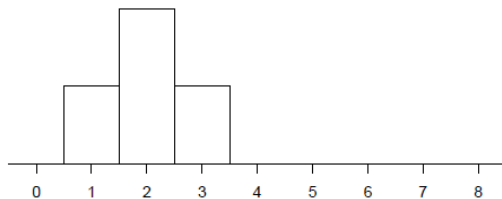
Masaryk University

*hegerd@chemi.muni.cz*

STDT 04 Afinní Transformace

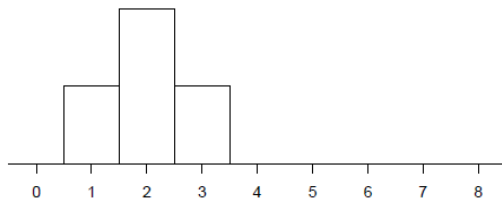
# Transformace - přičítání

original variable

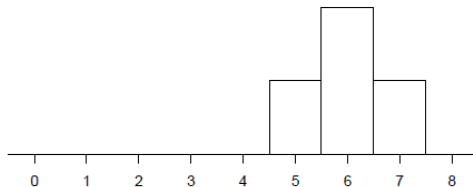


# Transformace - přičítání

original variable

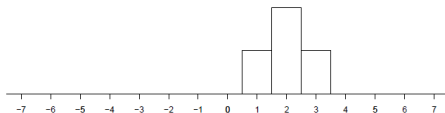


original variable + 4

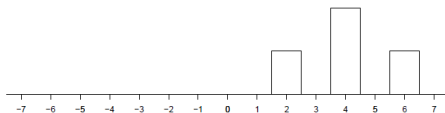


# Transformace - násobení

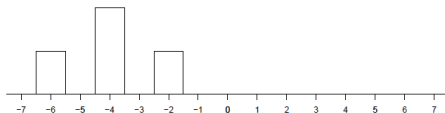
original variable



2 x original variable

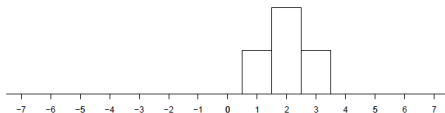


-2 x original variable

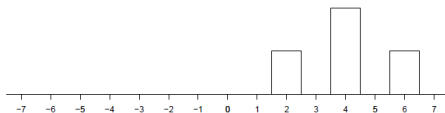


# Transformace - násobení

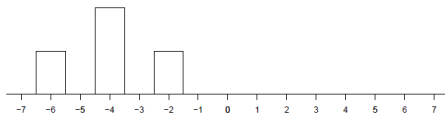
original variable



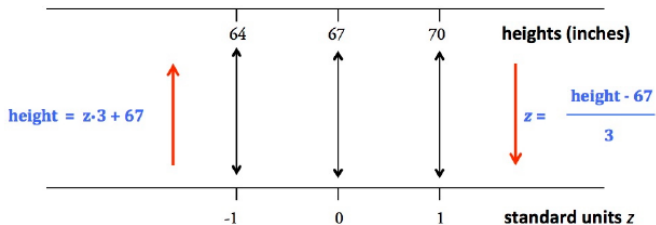
2 x original variable



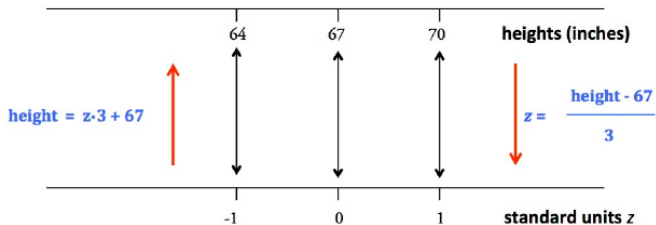
-2 x original variable



# Standardizované skóre - z-skóre



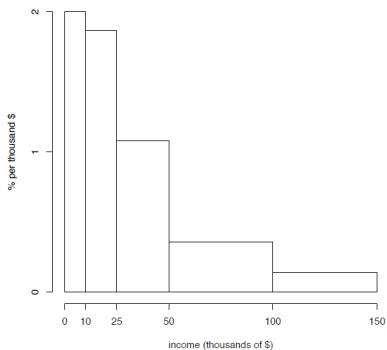
# Standardizované skóre - z-skóre



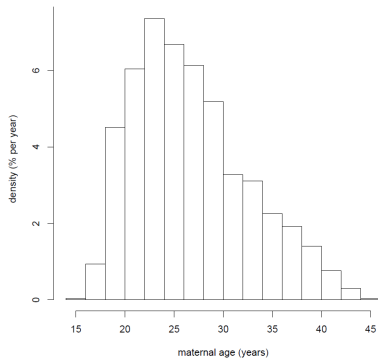
**Standard units measures "how many SDs above average"**



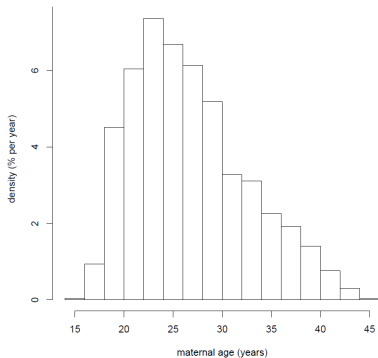
## Annual income of U.S. adults in 2010



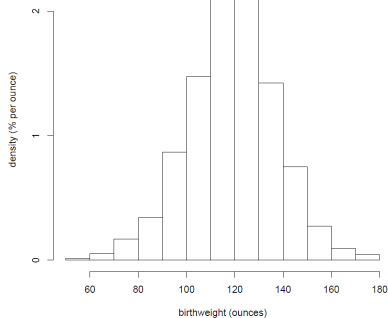
## Věk matek



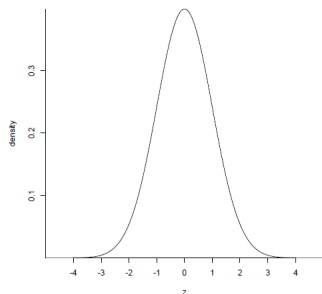
## Věk matek



## Váha novorozeňat



# Standardní normální křivka

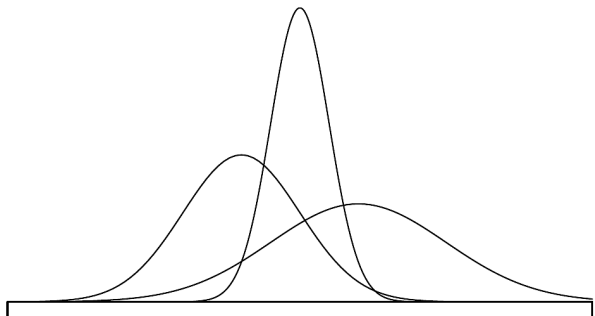


density at  $z$

$$= \frac{1}{\sqrt{2\pi}} e^{-\frac{1}{2}z^2}, \quad -\infty < z < \infty$$

- total area = 1
- balance point:  $z = 0$
- points of inflection:  
 $z = -1, z = 1$

# Normální křivky



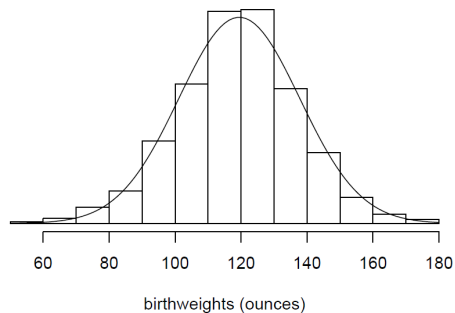
# Vlastnosti normálního rozdělení

**TABLE B.2:** Proportions of the Normal Curve (One-Tailed)

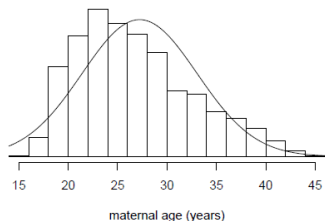
This table gives the proportion of the normal curve in the right-hand tail that lies at or beyond (i.e., is at least as extreme as) a given normal deviate; for example,  $Z = |(X_j - \mu)|/\sigma$  or  $Z = |(\bar{X} - \mu)|/\sigma_{\bar{X}}$ . For example, the proportion of a normal distribution for which  $Z \geq 1.51$  is 0.0655.

Z	0	1	2	3	4	5	6	7	8	9	Z
0.0	0.5000	0.4960	0.4920	0.4880	0.4840	0.4801	0.4761	0.4721	0.4681	0.4641	0.0
0.1	0.4602	0.4562	0.4522	0.4483	0.4443	0.4404	0.4364	0.4325	0.4286	0.4247	0.1
0.2	0.4207	0.4168	0.4129	0.4090	0.4052	0.4013	0.3974	0.3936	0.3897	0.3859	0.2
0.3	0.3821	0.3783	0.3745	0.3707	0.3669	0.3632	0.3594	0.3557	0.3520	0.3483	0.3
0.4	0.3446	0.3409	0.3372	0.3336	0.3300	0.3264	0.3228	0.3192	0.3156	0.3121	0.4
0.5	0.3085	0.3050	0.3015	0.2981	0.2946	0.2912	0.2877	0.2843	0.2810	0.2776	0.5
0.6	0.2743	0.2709	0.2676	0.2643	0.2611	0.2578	0.2546	0.2514	0.2483	0.2451	0.6
0.7	0.2420	0.2389	0.2358	0.2327	0.2297	0.2266	0.2236	0.2207	0.2177	0.2148	0.7
0.8	0.2119	0.2090	0.2061	0.2033	0.2005	0.1977	0.1949	0.1922	0.1894	0.1867	0.8
0.9	0.1841	0.1814	0.1788	0.1762	0.1736	0.1711	0.1685	0.1660	0.1635	0.1611	0.9
1.0	0.1587	0.1562	0.1539	0.1515	0.1492	0.1469	0.1446	0.1423	0.1401	0.1379	1.0
1.1	0.1357	0.1335	0.1314	0.1292	0.1271	0.1251	0.1230	0.1210	0.1190	0.1170	1.1
1.2	0.1151	0.1131	0.1112	0.1093	0.1075	0.1056	0.1038	0.1020	0.1003	0.0985	1.2
1.3	0.0968	0.0951	0.0934	0.0918	0.0901	0.0885	0.0869	0.0853	0.0838	0.0823	1.3
1.4	0.0808	0.0793	0.0778	0.0764	0.0749	0.0735	0.0721	0.0708	0.0694	0.0681	1.4
1.5	0.0668	0.0655	0.0643	0.0630	0.0618	0.0606	0.0594	0.0582	0.0571	0.0559	1.5
1.6	0.0548	0.0537	0.0526	0.0516	0.0505	0.0495	0.0485	0.0475	0.0465	0.0455	1.6
1.7	0.0446	0.0436	0.0427	0.0418	0.0409	0.0401	0.0392	0.0384	0.0375	0.0367	1.7
1.8	0.0359	0.0351	0.0344	0.0336	0.0329	0.0322	0.0314	0.0307	0.0301	0.0294	1.8
1.9	0.0287	0.0281	0.0274	0.0268	0.0262	0.0256	0.0250	0.0244	0.0239	0.0233	1.9
2.0	0.0228	0.0222	0.0217	0.0212	0.0207	0.0202	0.0197	0.0192	0.0188	0.0183	2.0
2.1	0.0179	0.0174	0.0170	0.0166	0.0162	0.0158	0.0154	0.0150	0.0146	0.0143	2.1
2.2	0.0139	0.0136	0.0132	0.0129	0.0125	0.0122	0.0119	0.0116	0.0113	0.0110	2.2
2.3	0.0107	0.0104	0.0102	0.0099	0.0096	0.0094	0.0091	0.0089	0.0087	0.0084	2.3
2.4	0.0082	0.0080	0.0078	0.0075	0.0073	0.0071	0.0069	0.0068	0.0066	0.0064	2.4
2.5	0.0062	0.0060	0.0059	0.0057	0.0055	0.0054	0.0052	0.0051	0.0049	0.0048	2.5
2.6	0.0047	0.0045	0.0044	0.0043	0.0041	0.0040	0.0039	0.0038	0.0037	0.0036	2.6
2.7	0.0035	0.0034	0.0033	0.0032	0.0031	0.0030	0.0029	0.0028	0.0027	0.0026	2.7
2.8	0.0026	0.0025	0.0024	0.0023	0.0023	0.0022	0.0021	0.0021	0.0020	0.0019	2.8
2.9	0.0019	0.0018	0.0018	0.0017	0.0016	0.0016	0.0015	0.0015	0.0014	0.0014	2.9
3.0	0.0013	0.0013	0.0013	0.0012	0.0012	0.0011	0.0011	0.0011	0.0010	0.0010	3.0
3.1	0.0010	0.0009	0.0009	0.0009	0.0008	0.0008	0.0008	0.0007	0.0007	0.0007	3.1
3.2	0.0007	0.0007	0.0006	0.0006	0.0006	0.0006	0.0006	0.0005	0.0005	0.0005	3.2

# Normální rozdělení a histogram



# Né každé rozložení je normální



**Many distributions  
are not normal, not  
even approximately.**

mean 27.23 years

SD 5.82 years



[https://courses.edx.org/courses/BerkeleyX/Stat\\_2.1x/](https://courses.edx.org/courses/BerkeleyX/Stat_2.1x/)  
Jerold Zar: Biostatistical analysis