

# Marchantiophyta, Bryophyta



**Marchantiophyta**

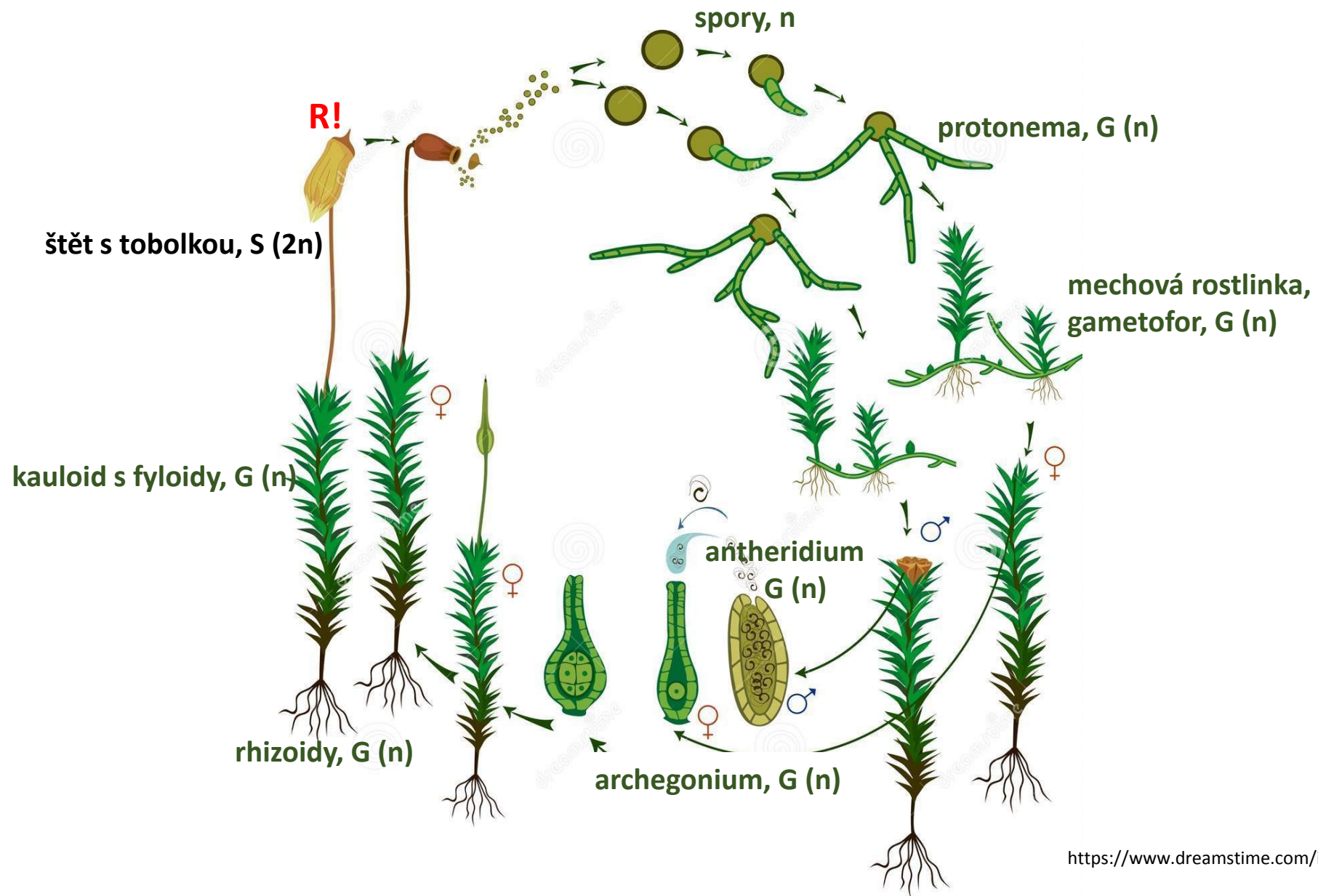


**Bryophyta**

<https://cz.pinterest.com/pin/285978645065584977>

<https://alchetron.com/Polytrichum>

# Mechorosty – metageneze





# Marchantiophyta, Marchantiopsida, *Marchantia polymorpha*



**stélka s  
archegoniofory**



**stélka s  
antheridiofory**

<https://cz.pinterest.com/pin/340514421800127873/>  
[https://commons.wikimedia.org/wiki/File:Marchantia\\_polymorpha\\_HC1.jpg](https://commons.wikimedia.org/wiki/File:Marchantia_polymorpha_HC1.jpg)  
<https://www.alamy.com/liverwort-marchantia-polymorpha-reproduction-organs-germany-north-rhine-westphalia-image281101335.html>

# Marchantiophyta, Marchantiopsida, *Marchantia polymorpha*



stélka s  
archegoniofory



stélka s thalidii



stélka s  
antheridiofory

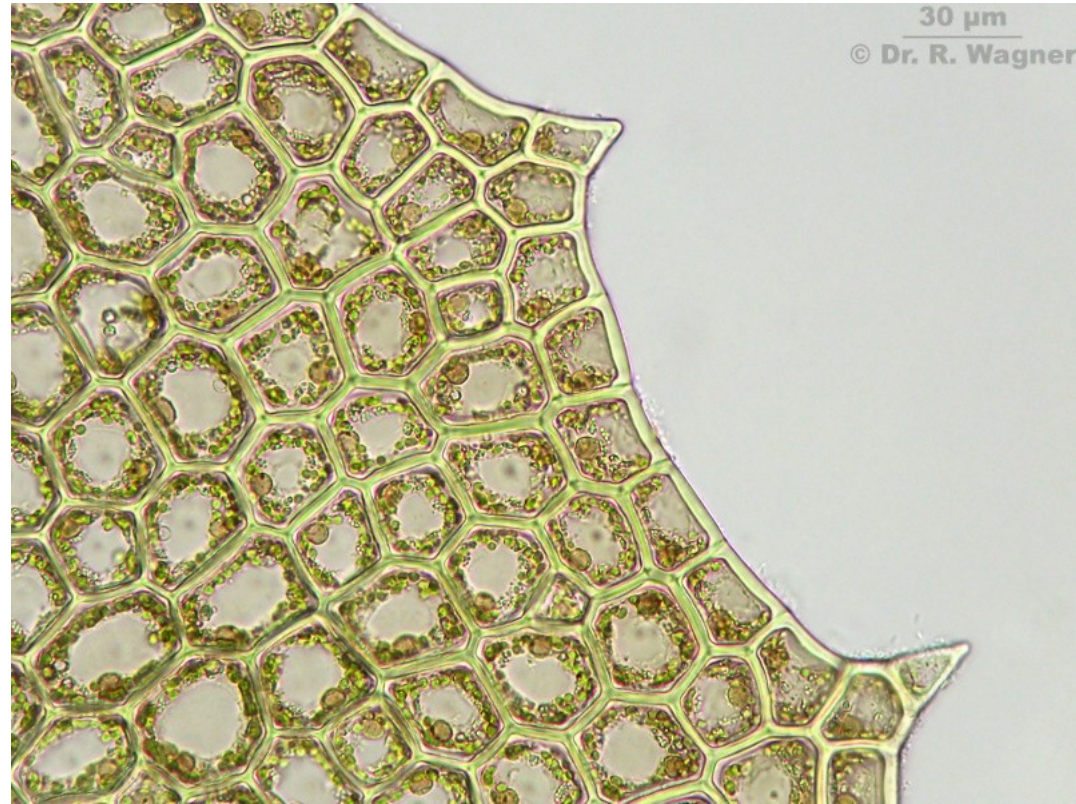


průřez thalidiem

<https://cz.pinterest.com/pin/340514421800127873/>  
[https://commons.wikimedia.org/wiki/File:Marchantia\\_polymorpha\\_HC1.jpg](https://commons.wikimedia.org/wiki/File:Marchantia_polymorpha_HC1.jpg)  
<https://www.alamy.com/liverwort-marchantia-polymorpha-reproduction-organs-germany-north-rhine-westphalia-image281101335.html>



# Marchantiophyta, Jungermaniopsida, *Plagiochilla asplenioides*



*Plagiochilla asplenioides*, fyloid se stejnocennými buňkami

*Plagiochilla asplenioides*, foliózní stélka

[http://www.dr-ralf-wagner.de/Bilder/Plagiochila\\_asplenioides-Zahn.jpg](http://www.dr-ralf-wagner.de/Bilder/Plagiochila_asplenioides-Zahn.jpg)

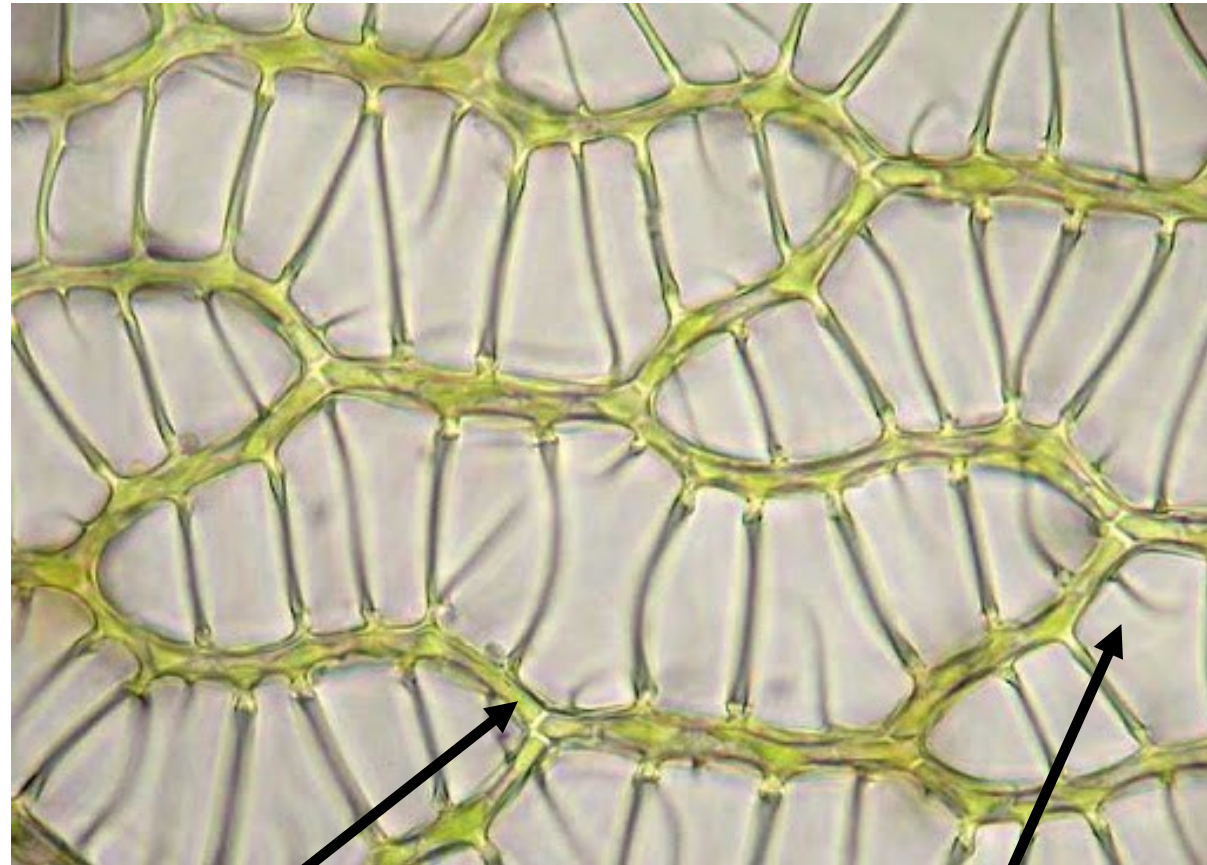
[https://www.bryo.cz/index.php?p=mechorosty\\_foto&site=default&gallery=plagiochila\\_asplenioides&id=4496](https://www.bryo.cz/index.php?p=mechorosty_foto&site=default&gallery=plagiochila_asplenioides&id=4496)



# Bryophyta, Sphagnopsida



***Sphagnum* sp.**



**chlorocyty**

**hyalocyty**

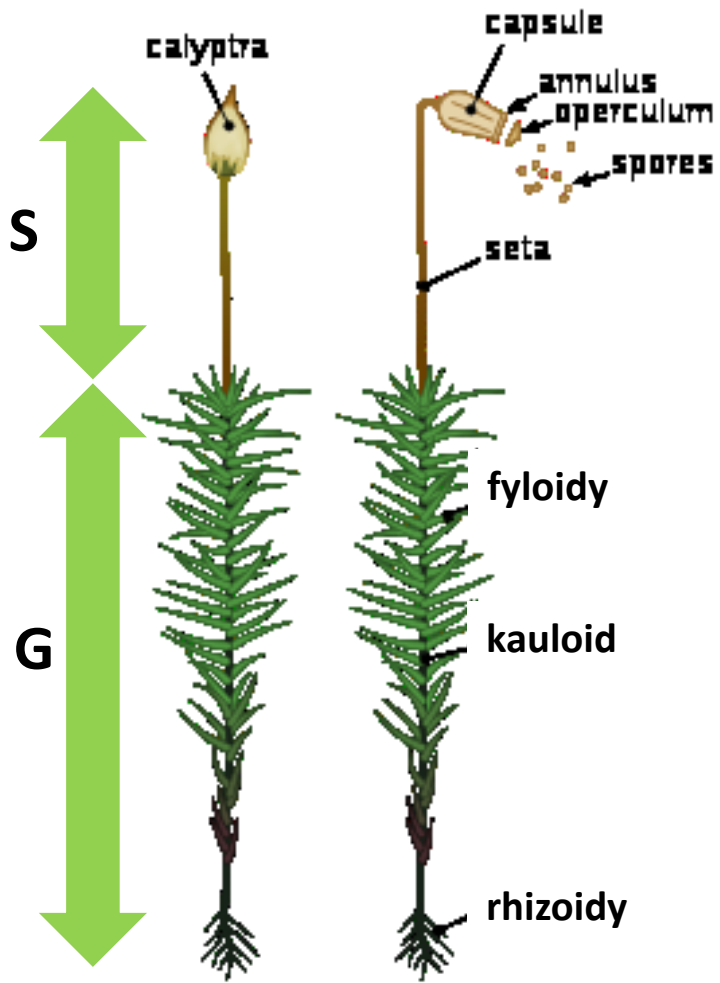
**lístky rašeliníku jsou tvořeny dvěma typy buněk: zelené drobné buňky (chlorocyty) mají asimilační funkci, nezelné velké buňky (hyalocyty) plní funkci cisteren**

<https://peatlands.org/sphagnum-farming-in-guizhou>

<http://www.cpbr.gov.au/bryophyte/photos-captions/sphagnum-cell1-JAC-4320.html>



# Bryophyta, Polytrichopsida

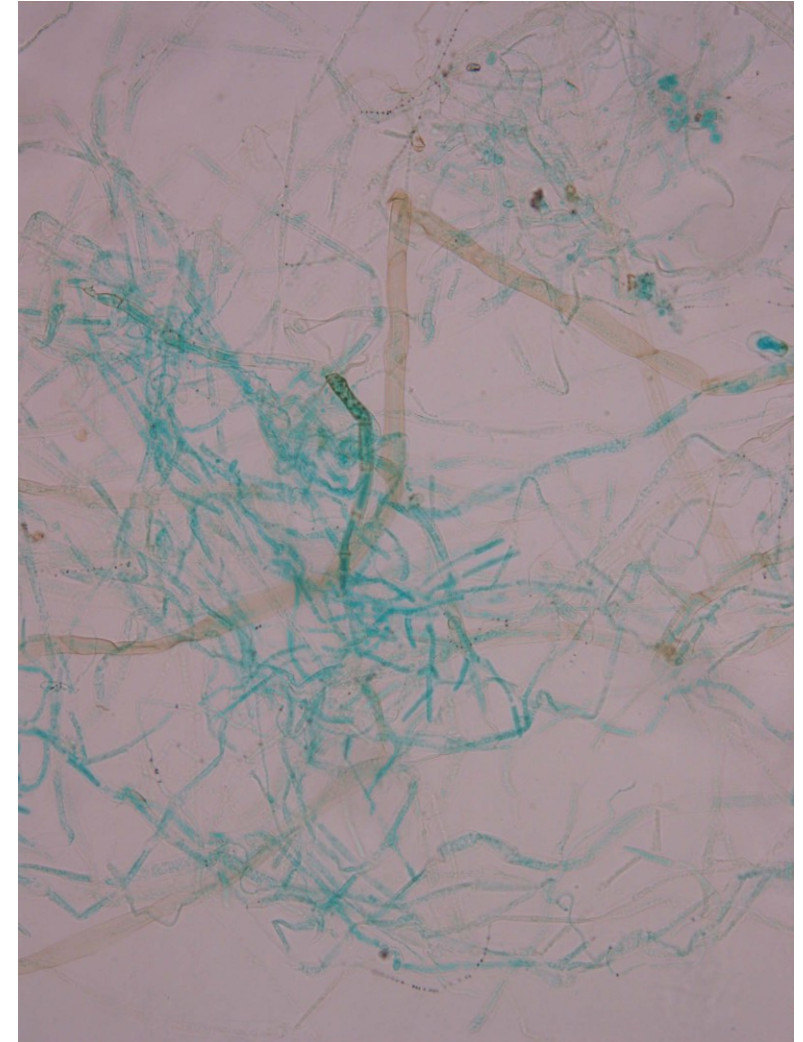


*Polytrichum commune*

<https://en.wikipedia.org/wiki/Polytrichum>



<https://alchetron.com/Polytrichum>



protonema

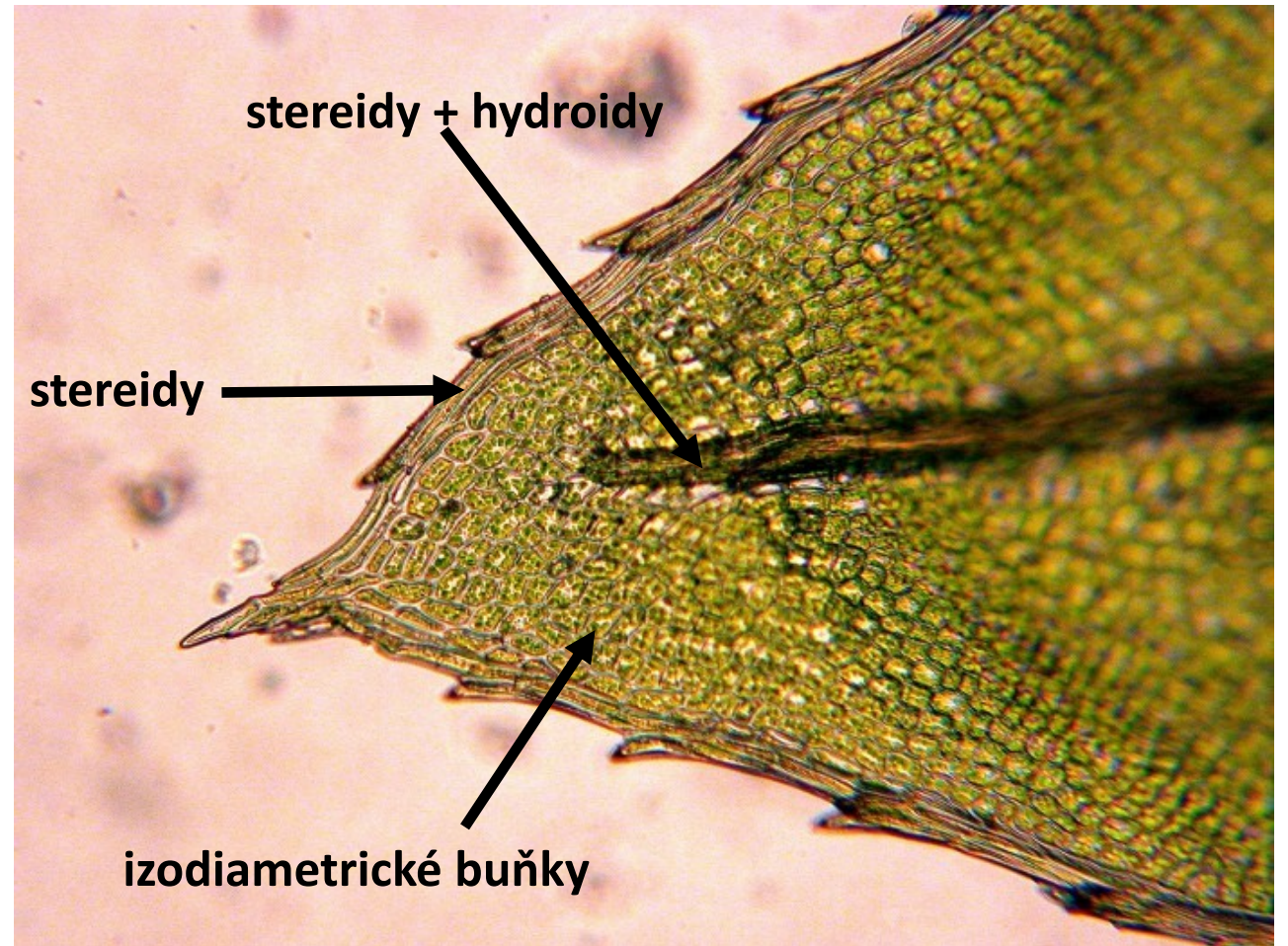


# Bryophyta, Bryopsida

lístek měříku je tvořen diferencovanými buňkami

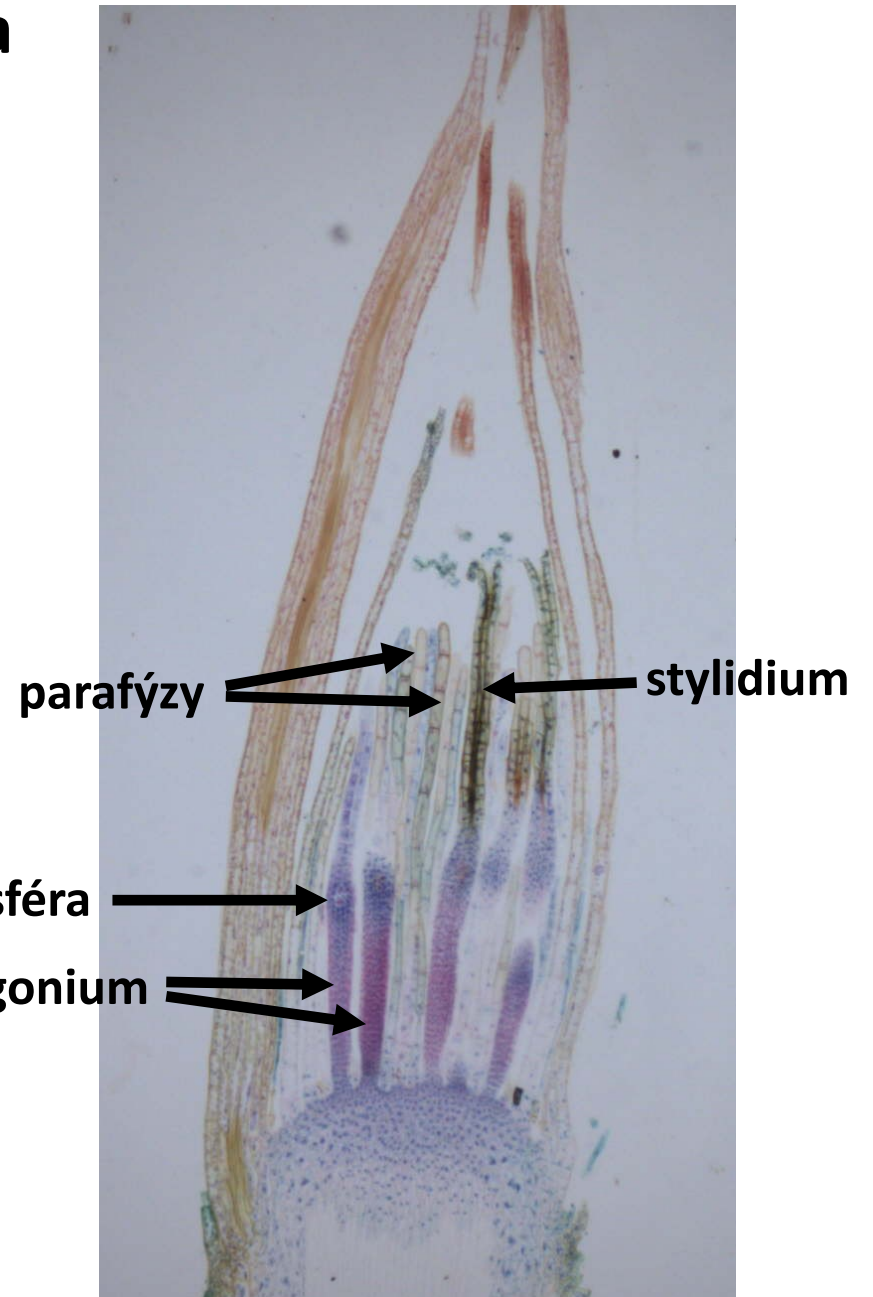
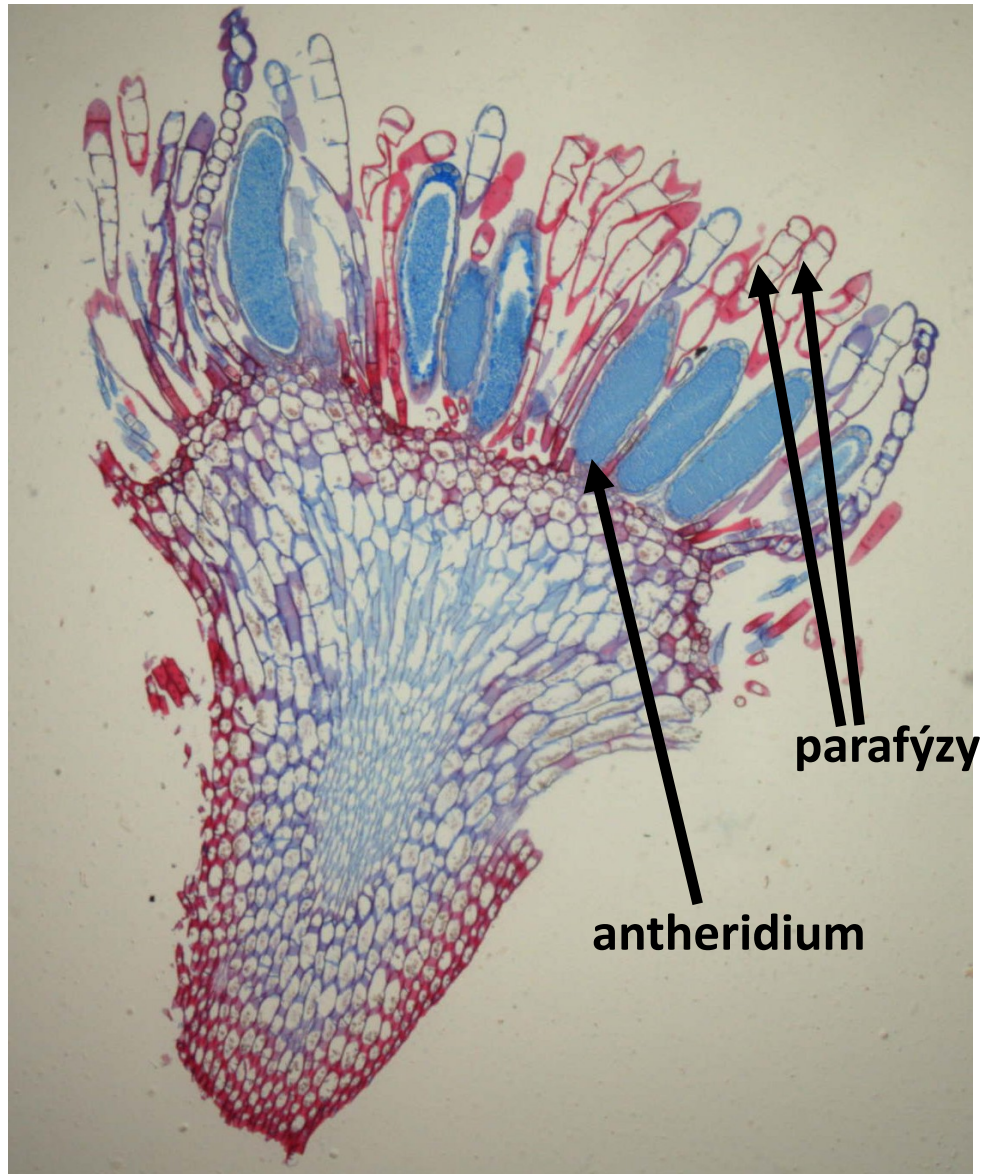


*Plagiomnium undulatum*





# Bryophyta, Bryopsida



*Mnium* sp.