

Vývoj kraniofaciálních struktur

MARCELA BUCHTOVÁ

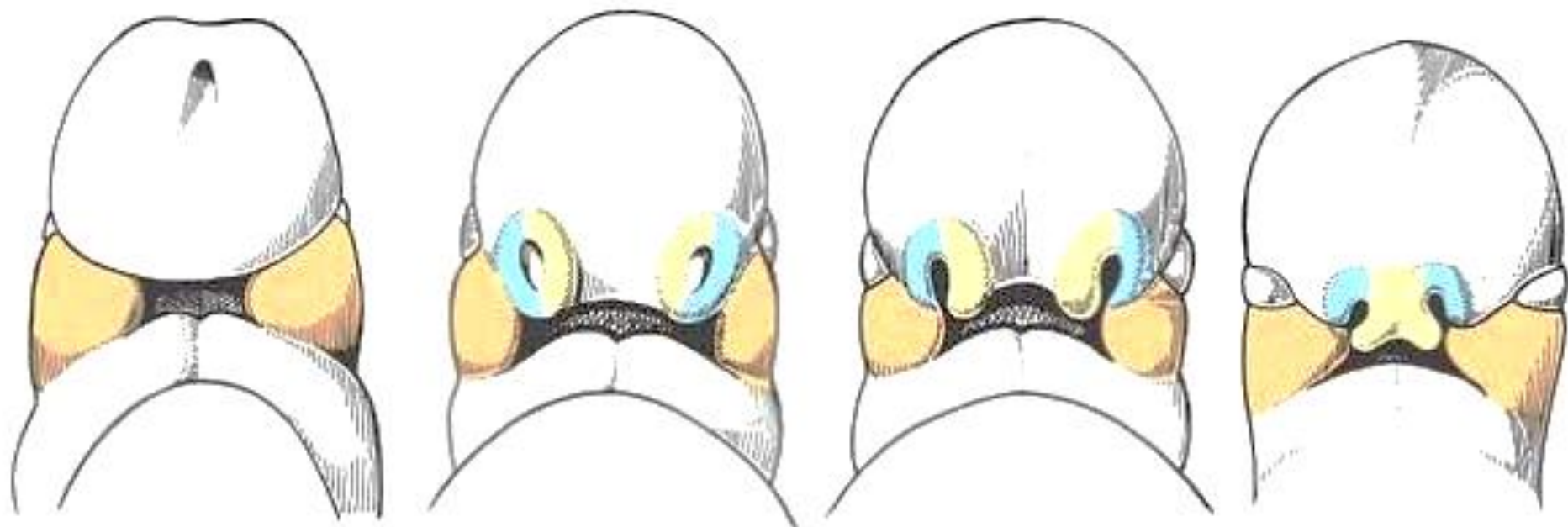


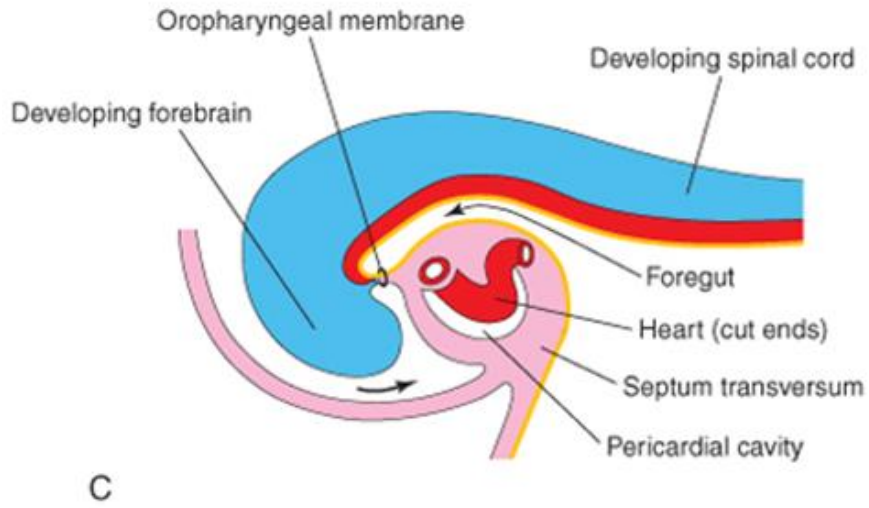
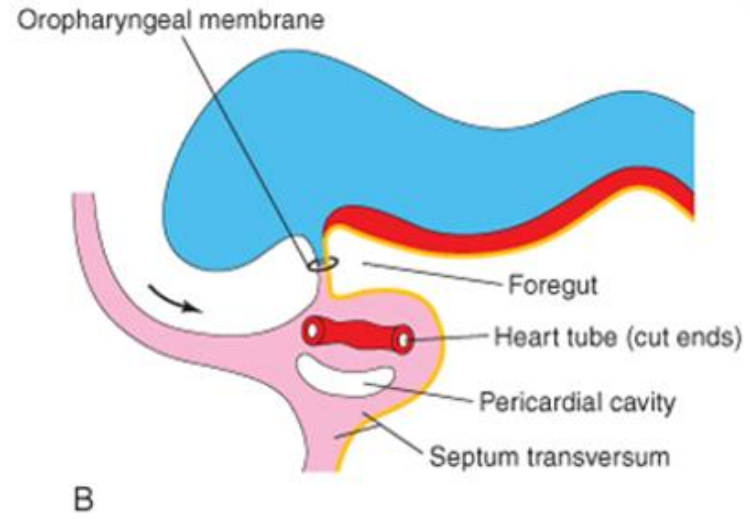
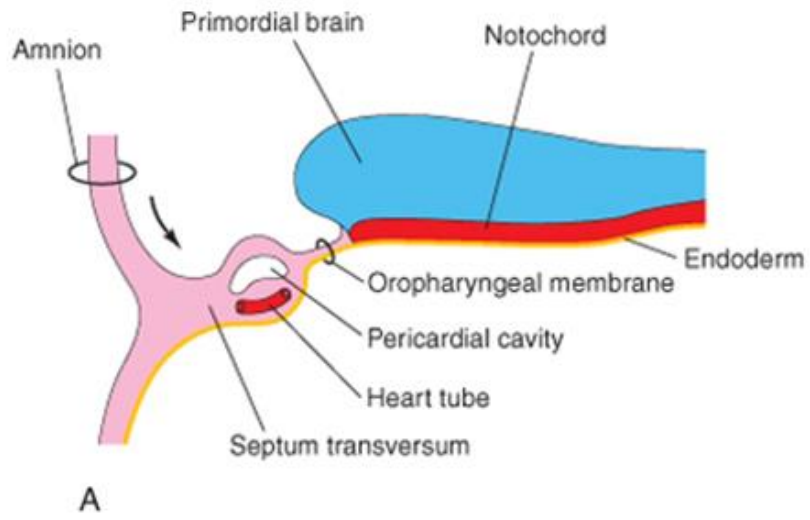
Financováno
Evropskou unií
NextGenerationEU

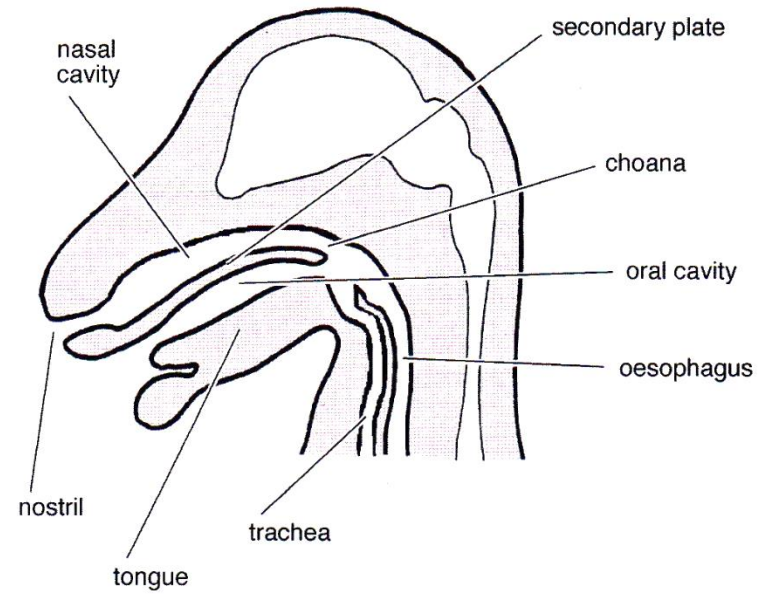
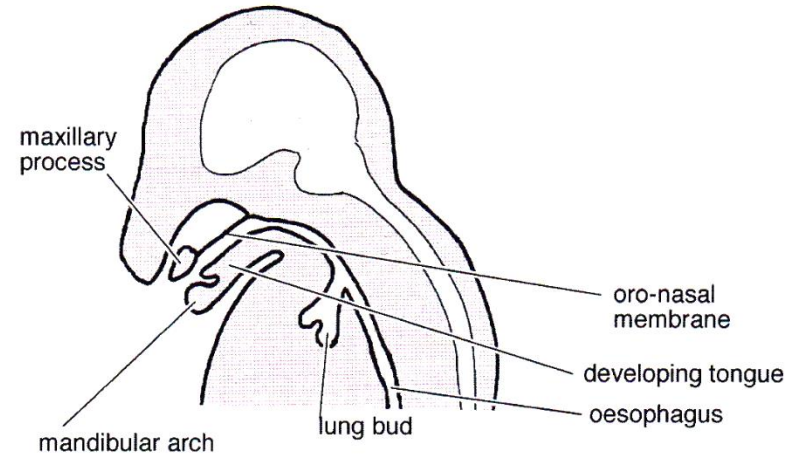
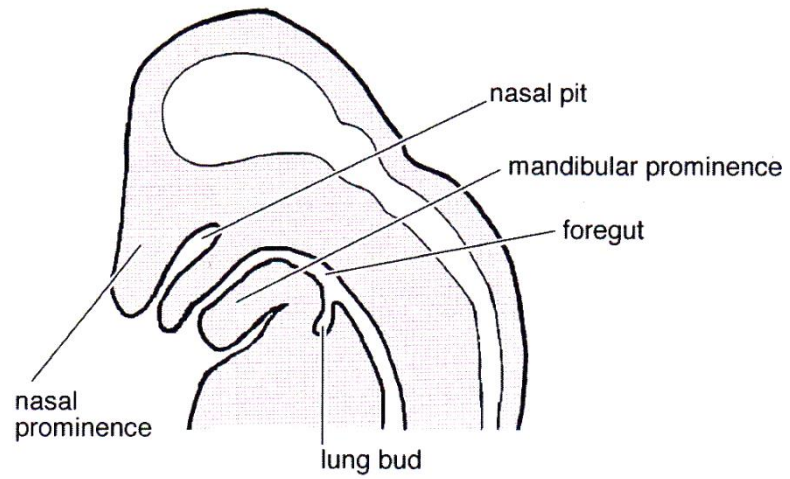
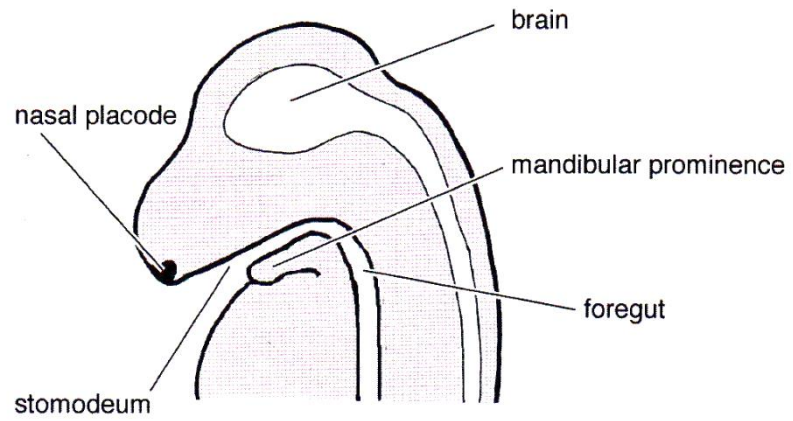


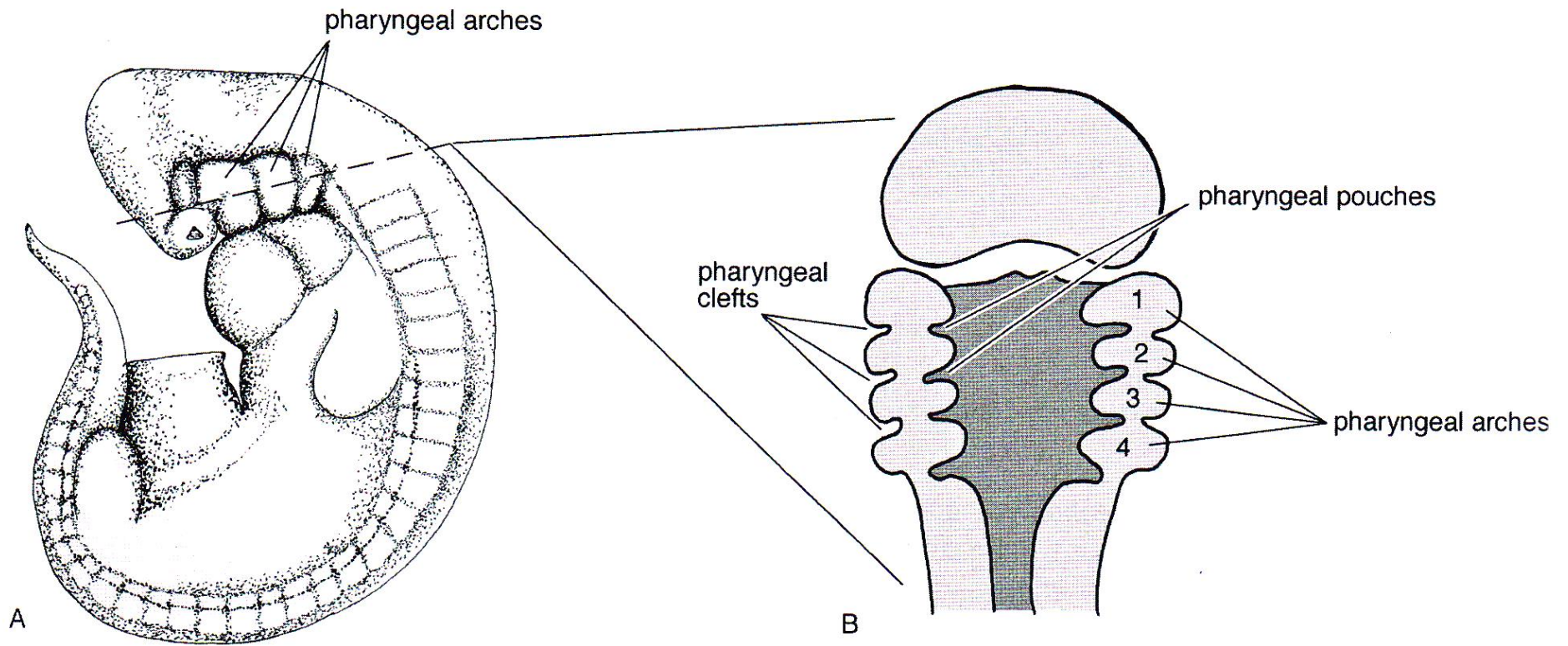
NÁRODNÍ
PLÁN OBNOVY

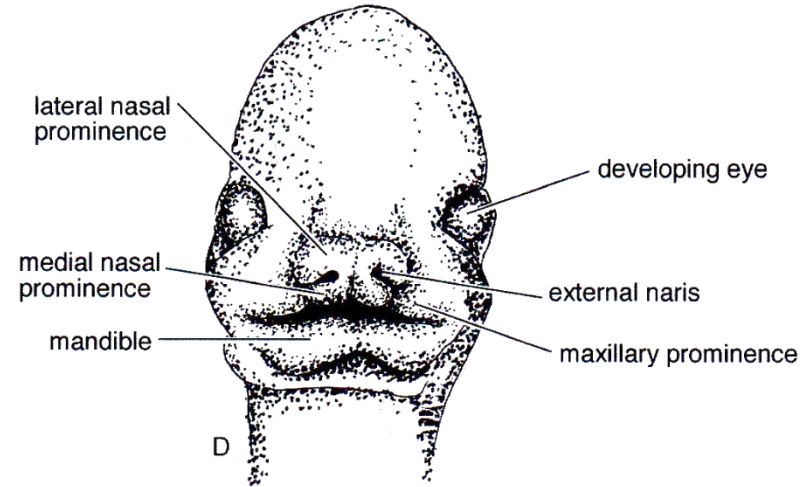
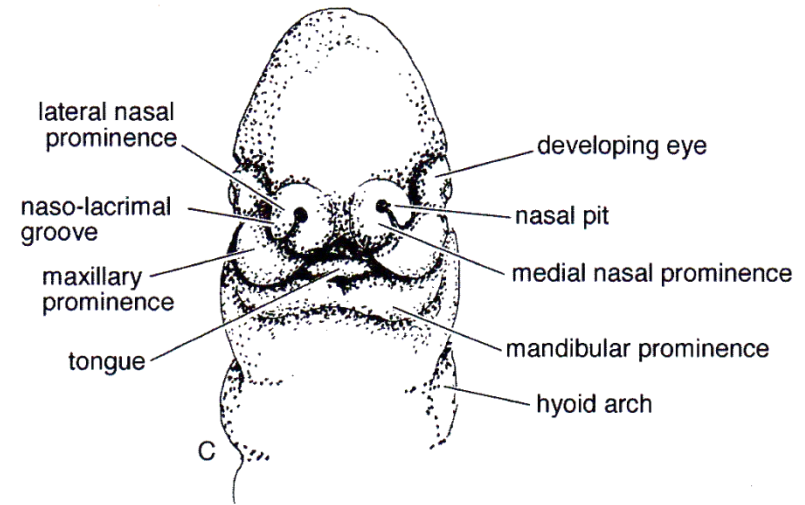
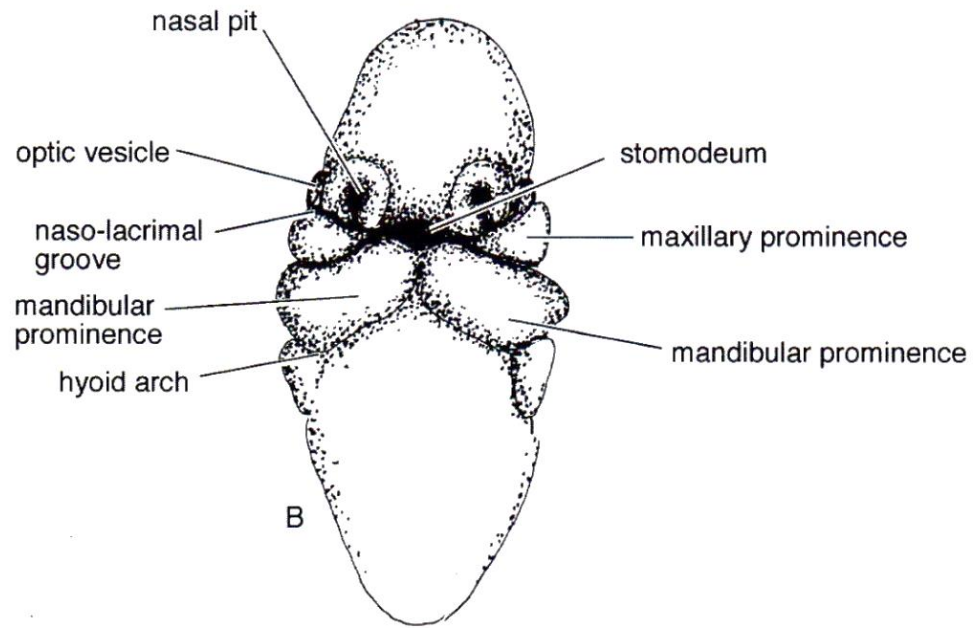
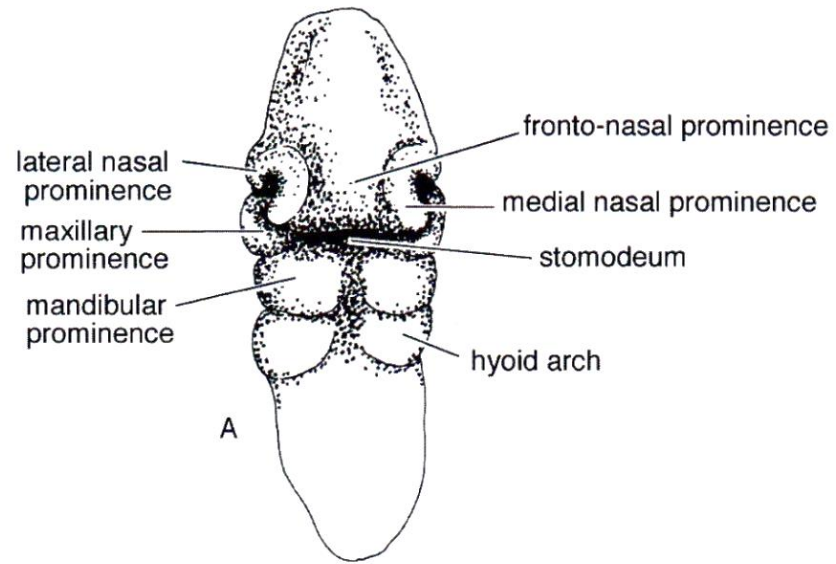
MŠMT
MINISTERSTVO ŠKOLSTVÍ,
MLÁDEŽE A TĚLOVÝCHOVY



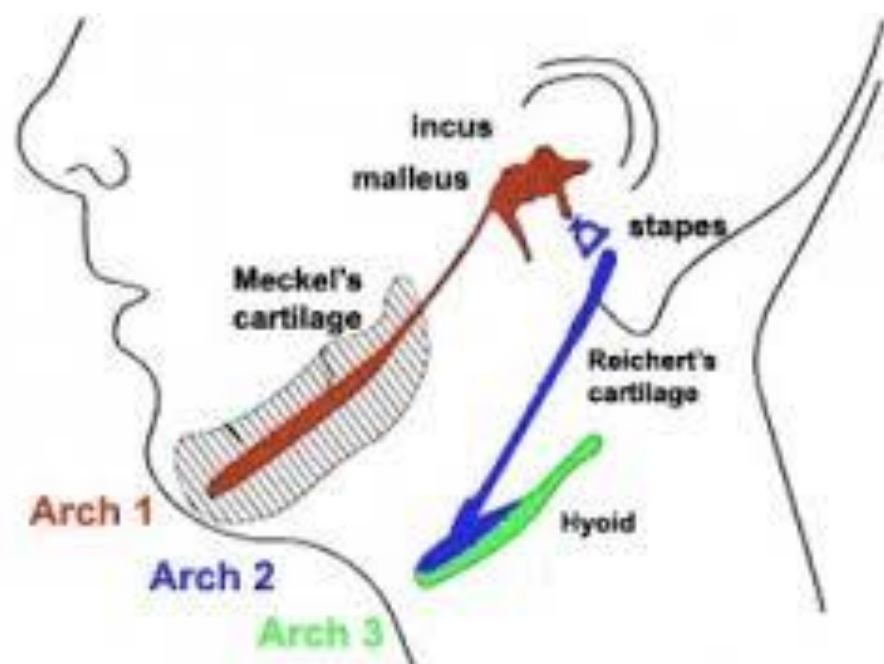




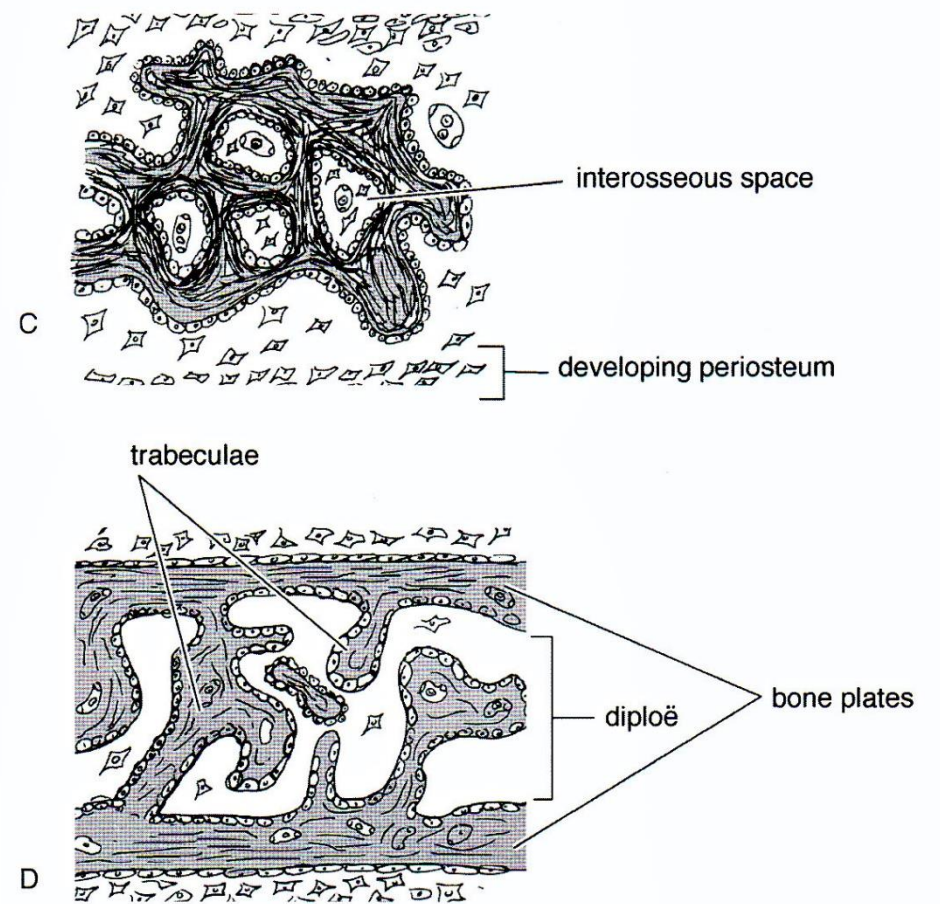
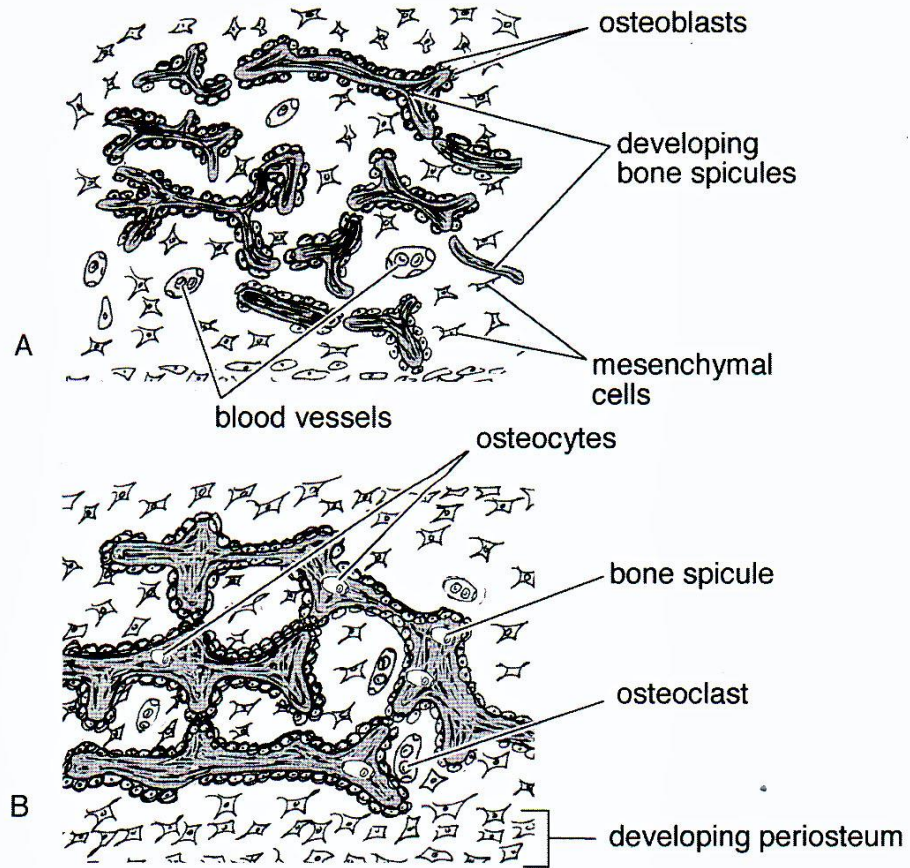


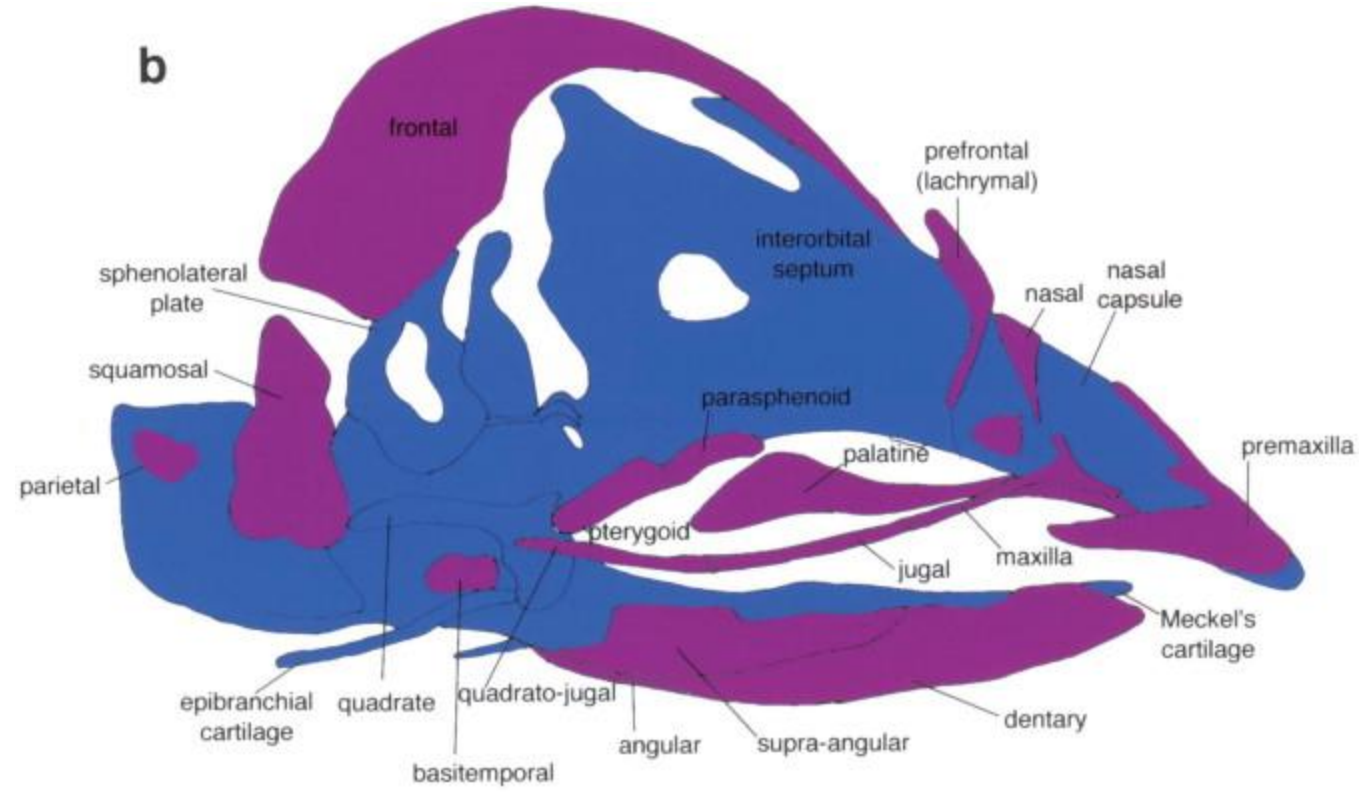


Pharyngeal arch	Arch derivatives					
	Muscles	Bone and cartilage	Other connective tissues	Pouch derivatives	Cleft derivatives	Cranial nerve
First (mandibular)	Muscles of mastication, mylohyoid, rostral belly of digastricus, tensor tympani, tensor veli palatini	Mandible, maxilla, pre-maxilla, zygomatic, auricle of ear, malleus, incus	Ligament of malleus, spheno-mandibular ligament, tympanic membrane (from first pharyngeal membrane)	Auditory tube, guttural pouch	External auditory meatus	Trigeminal (V)
Second (hyoid)	Muscles of facial expression, stapedius, stylohyoid, caudal belly of digastricus	Auricle of ear, stapes, stylohyoid, ceratohyoid, part of basihyoid	Stylohyoid ligament	Palatine tonsils	None	Facial (VII)
Third	Stylopharyngeus	Part of basihyoid bone, thyrohyoid cartilage	None	Parathyroids III, stroma of thymus	None	Glossopharyngeal (IX)
Fourth and sixth	Cricothyroid, levator veli palatini, constrictors of pharynx, intrinsic muscles of larynx	Cricoid, thyroid, arytenoid, corniculate and cuneiform cartilages of larynx.	None	Parathyroids IV, stroma of thymus, ultimobranchial bodies	None	Cranial and recurrent laryngeal branches of vagus (X)

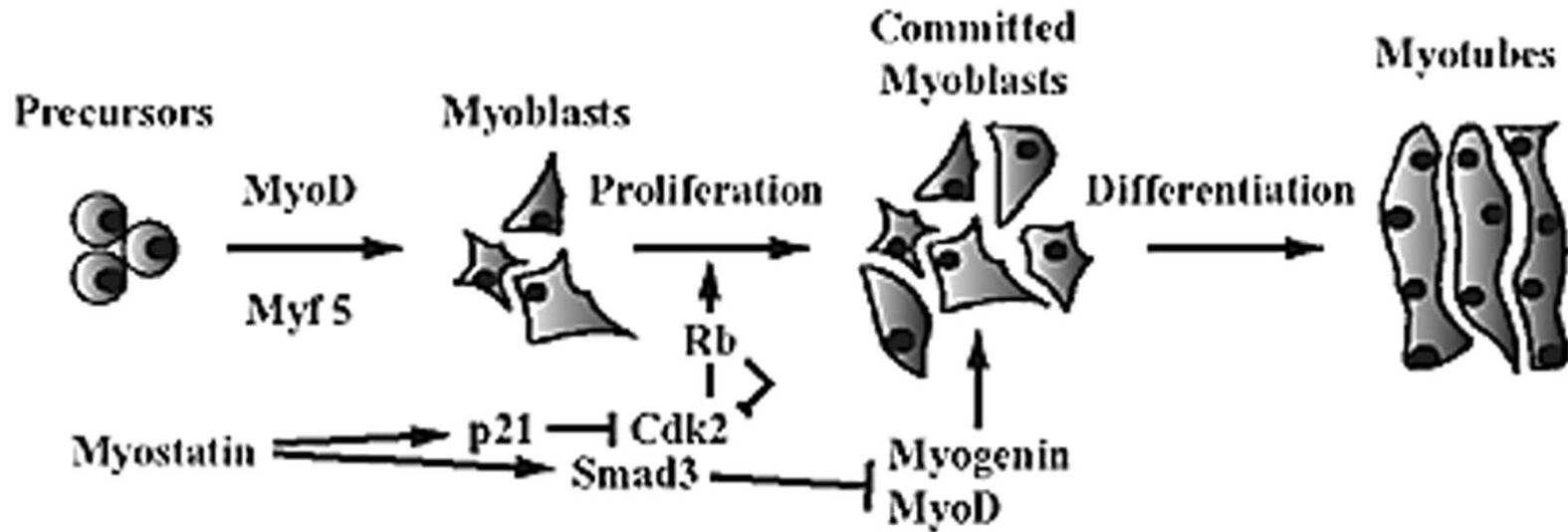


Pharyngeal Arch Structures

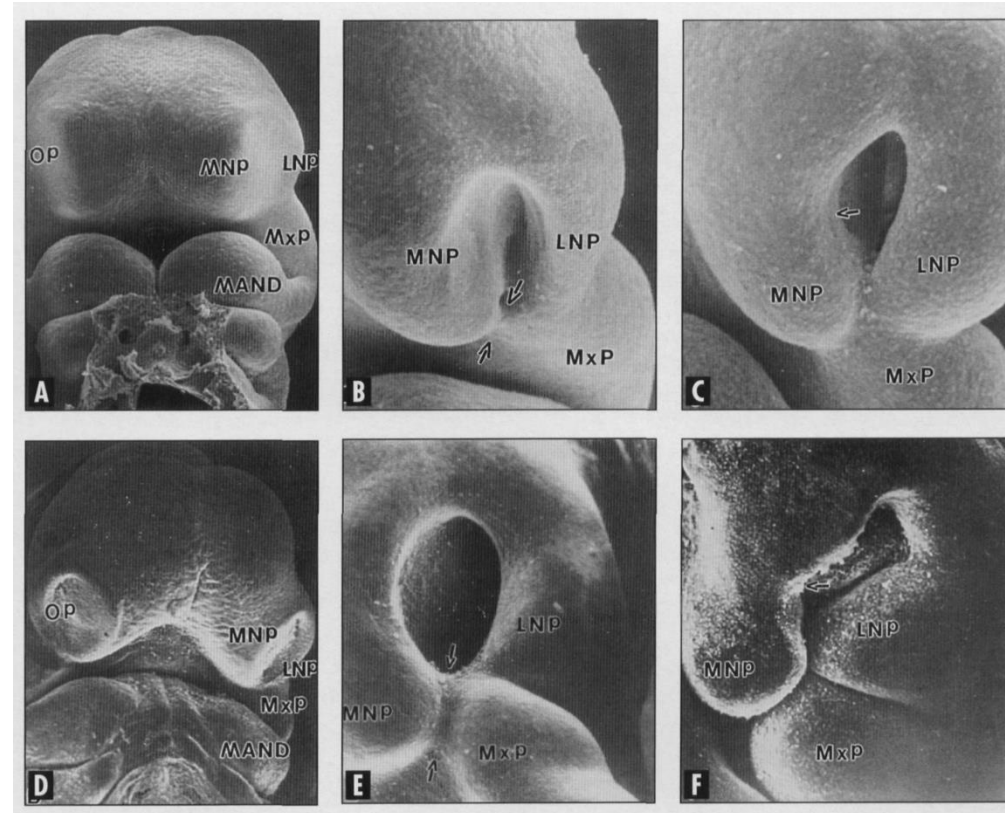




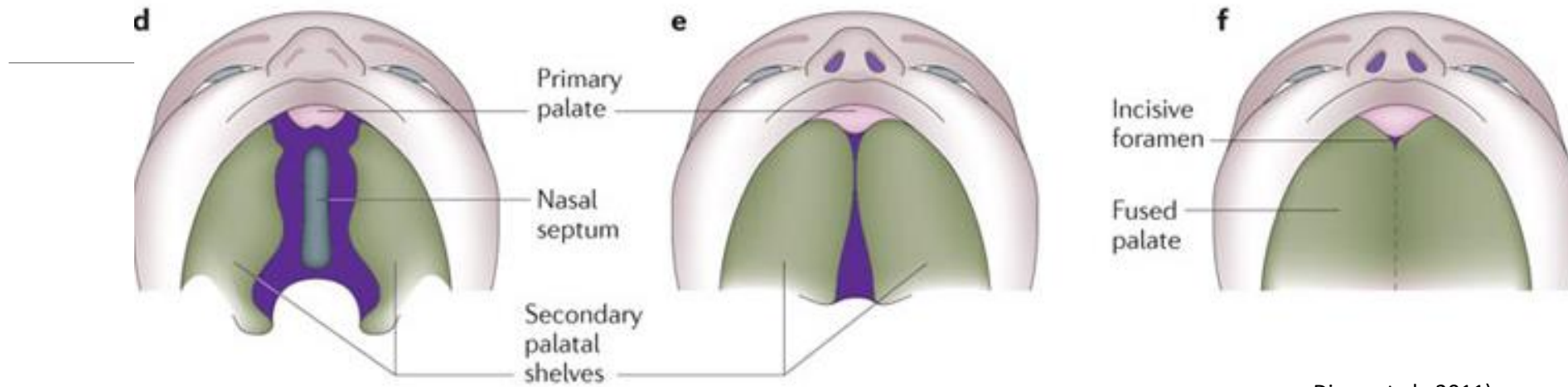
Myogeneze



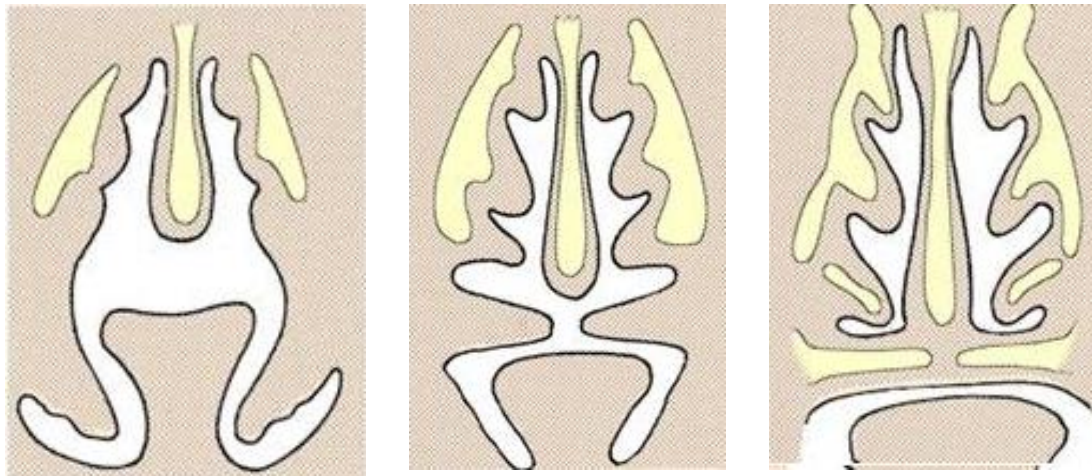
Vývoj horních cest dýchacích



Vývoj horních cest dýchacích



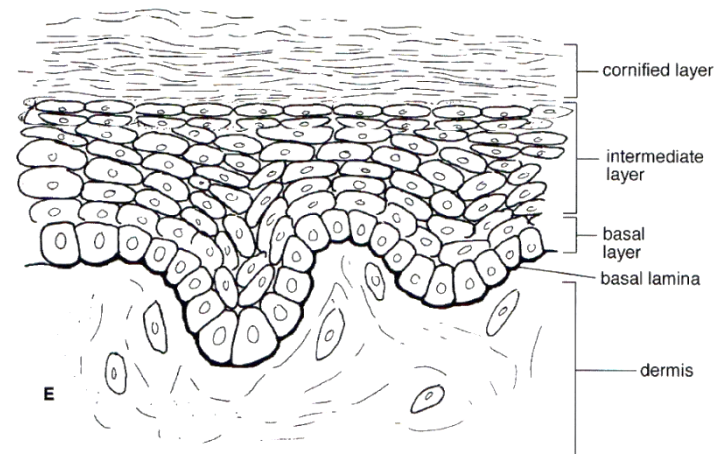
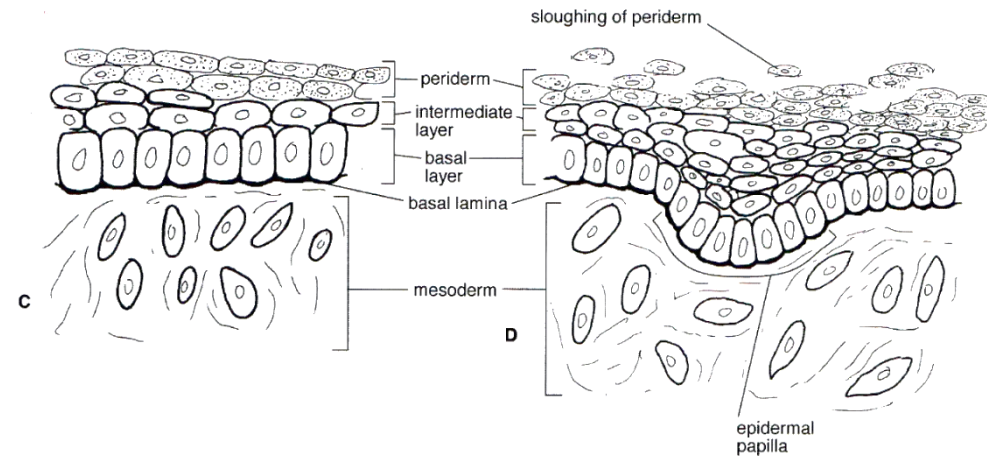
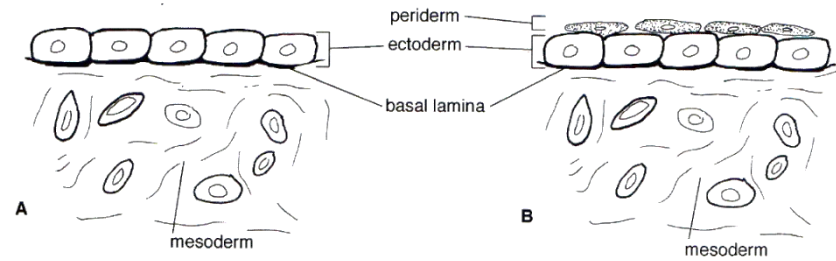
Dixon et al., 2011)

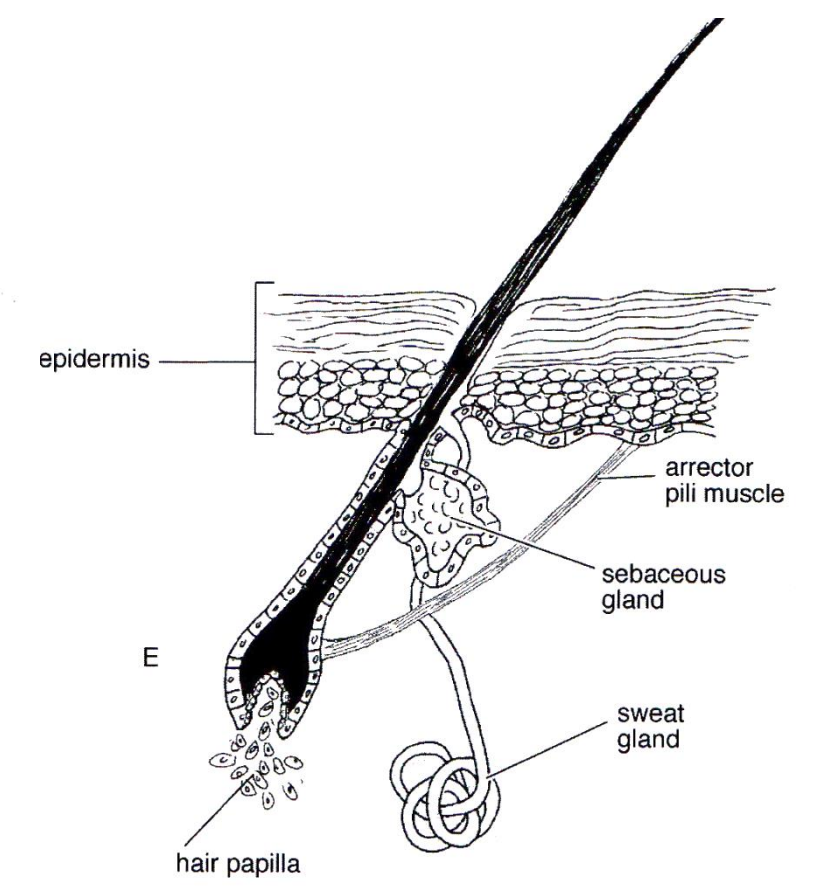
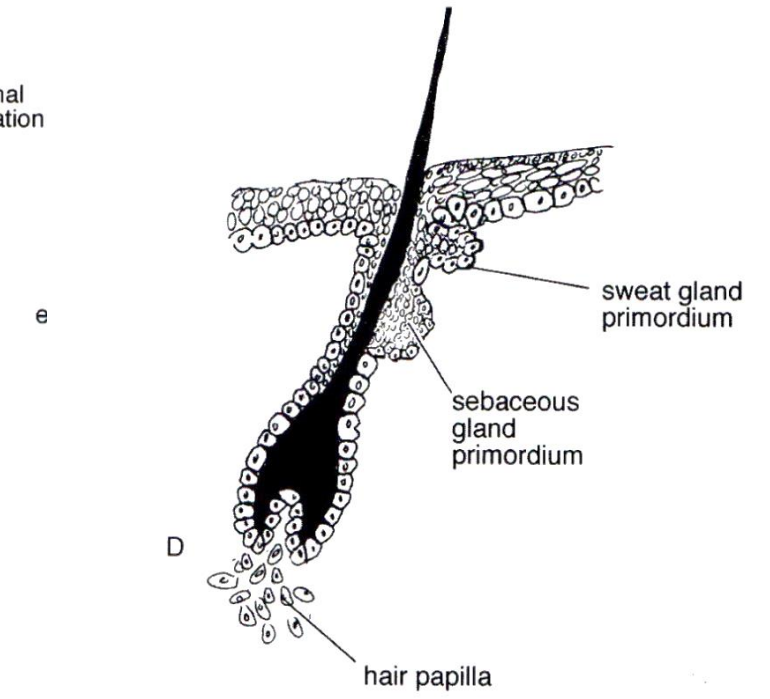
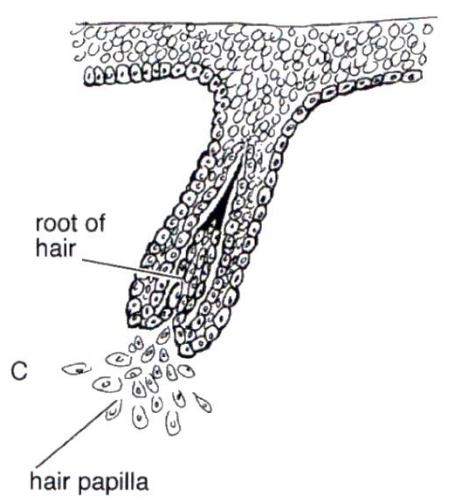
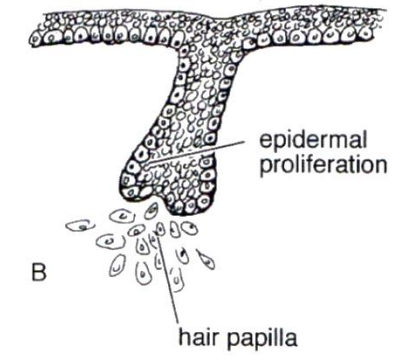
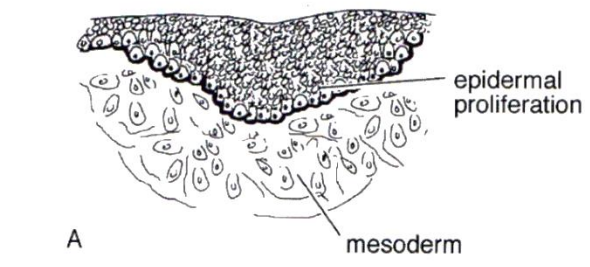


3 části:

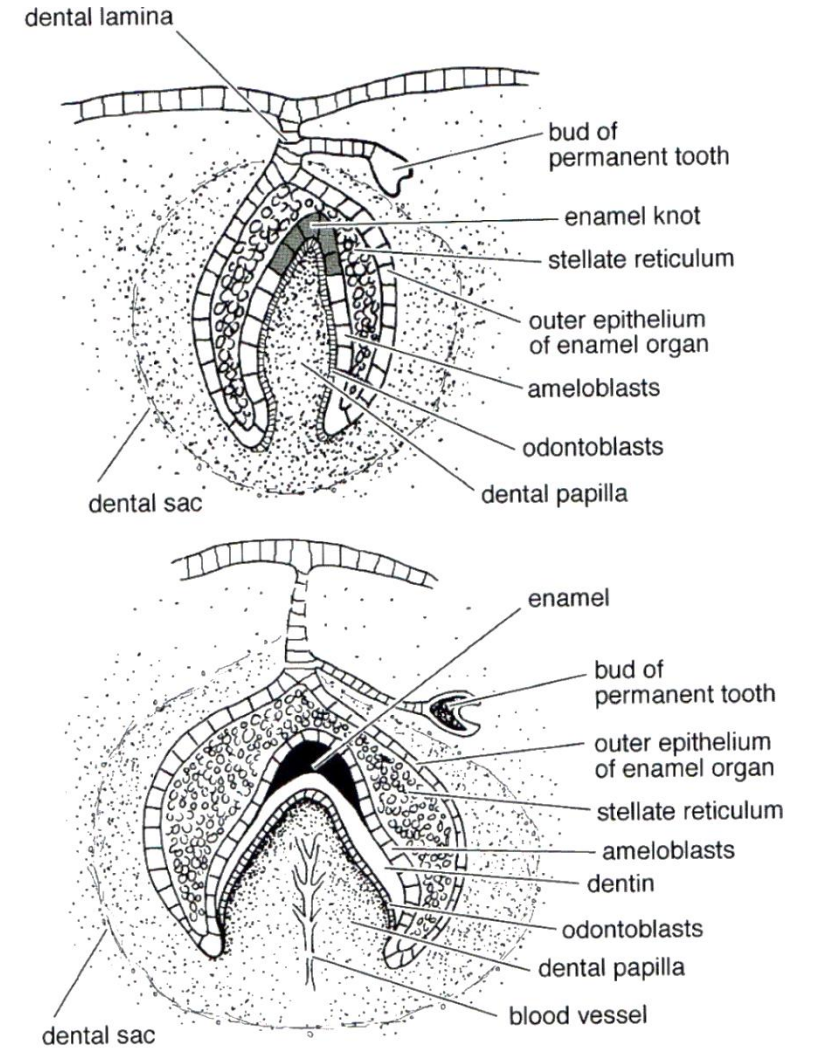
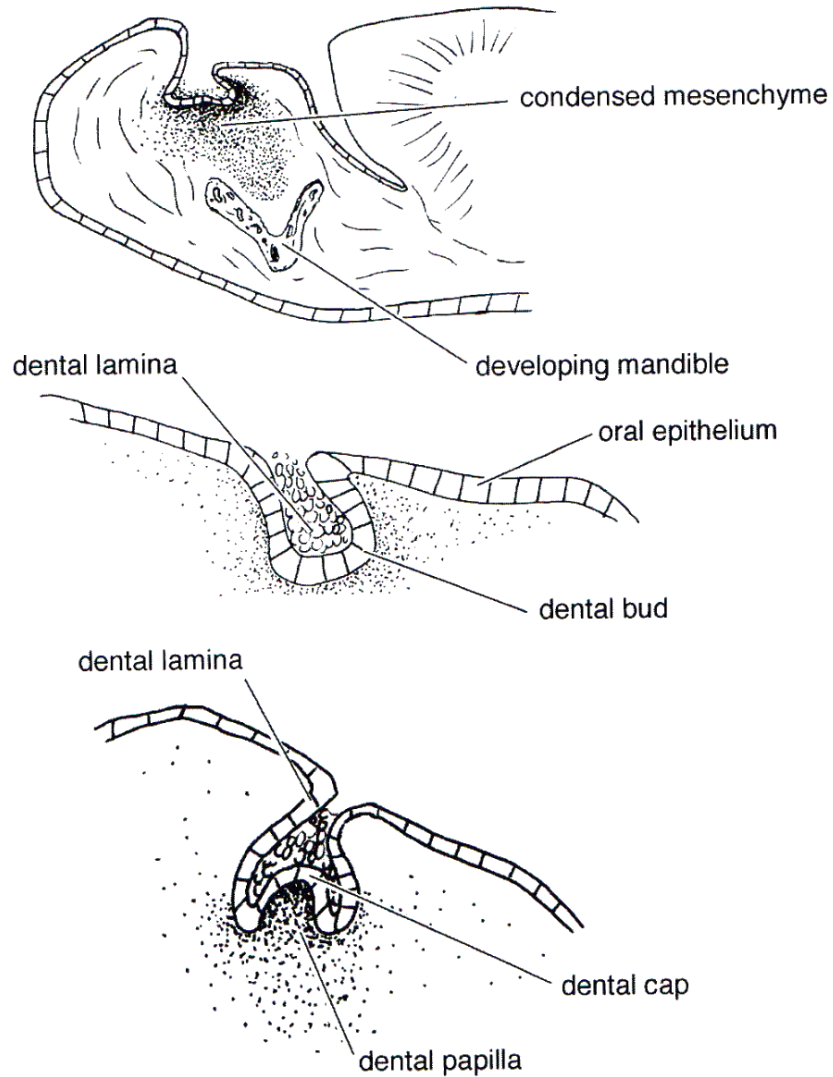
- primární patro
- párové patrové prominence MxP

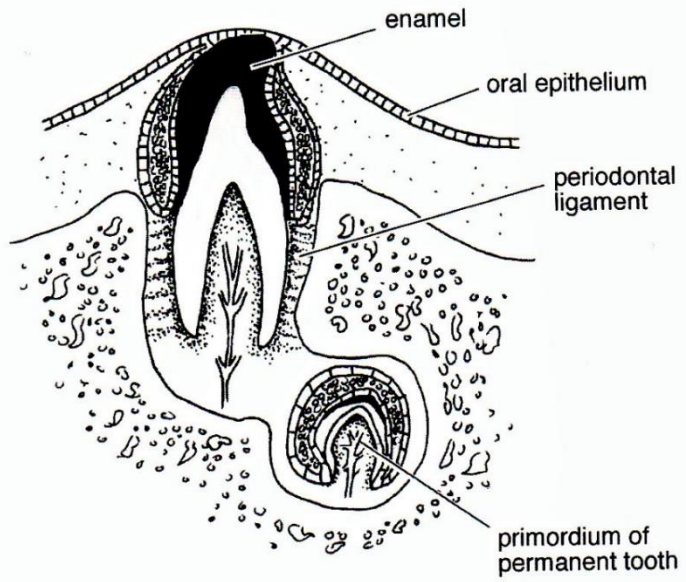
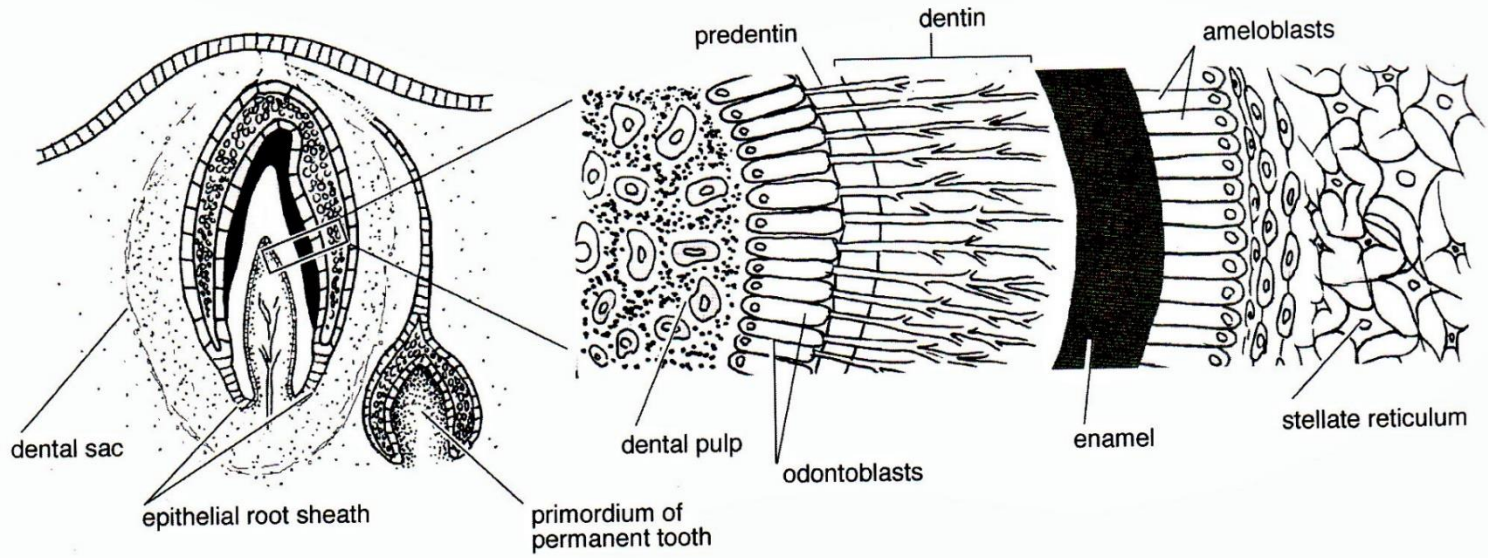
Vývoj kůže

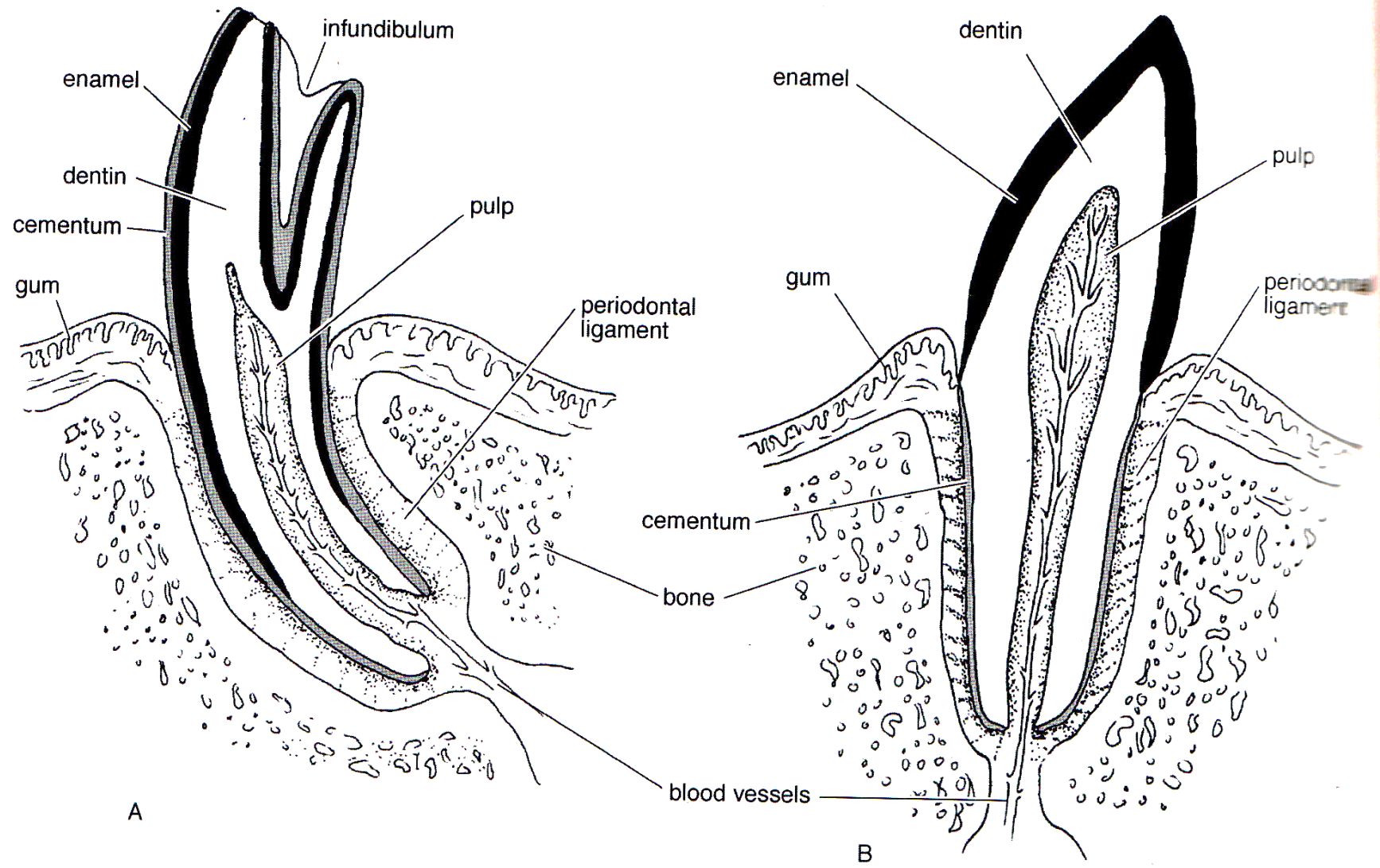




Vývoj zubů



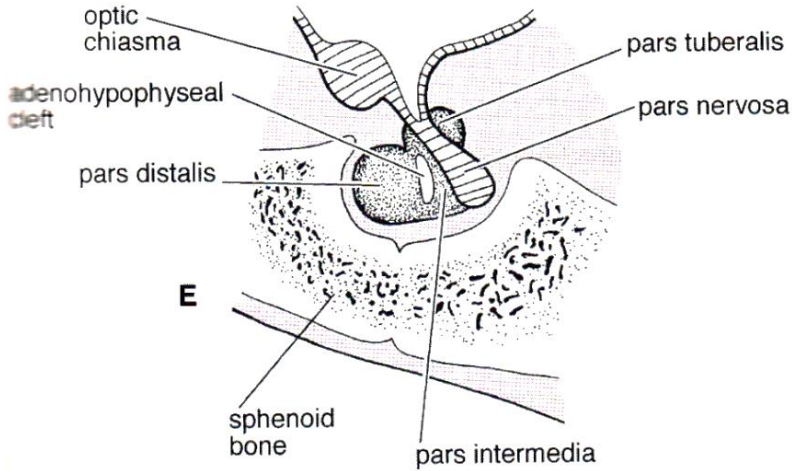
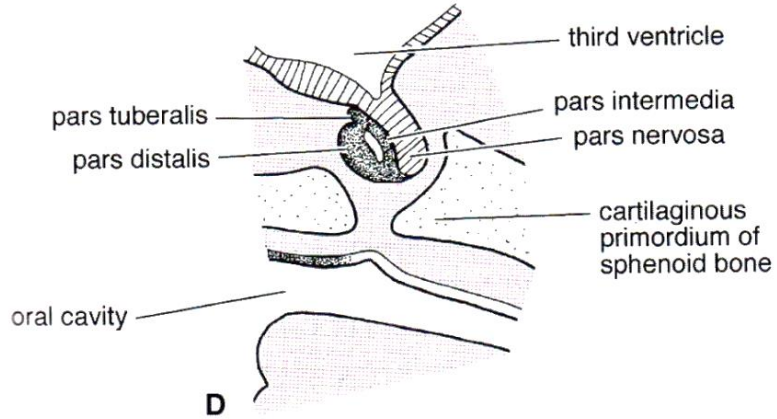
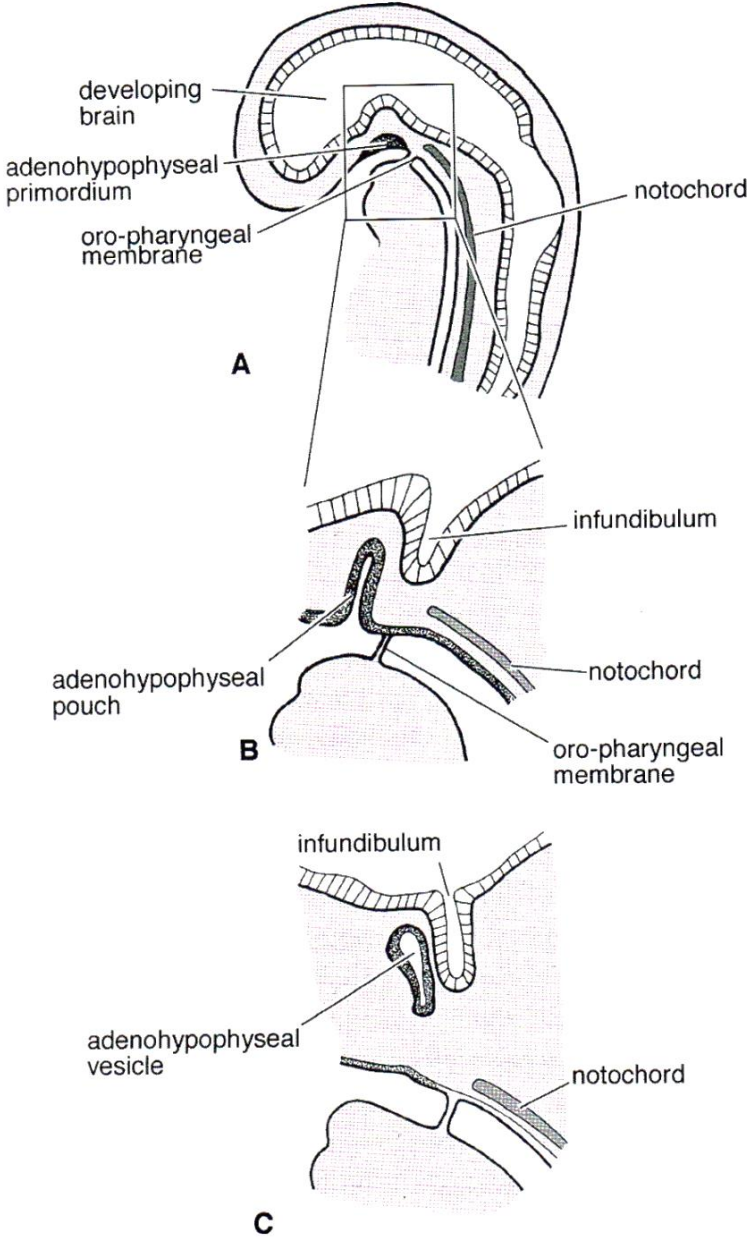




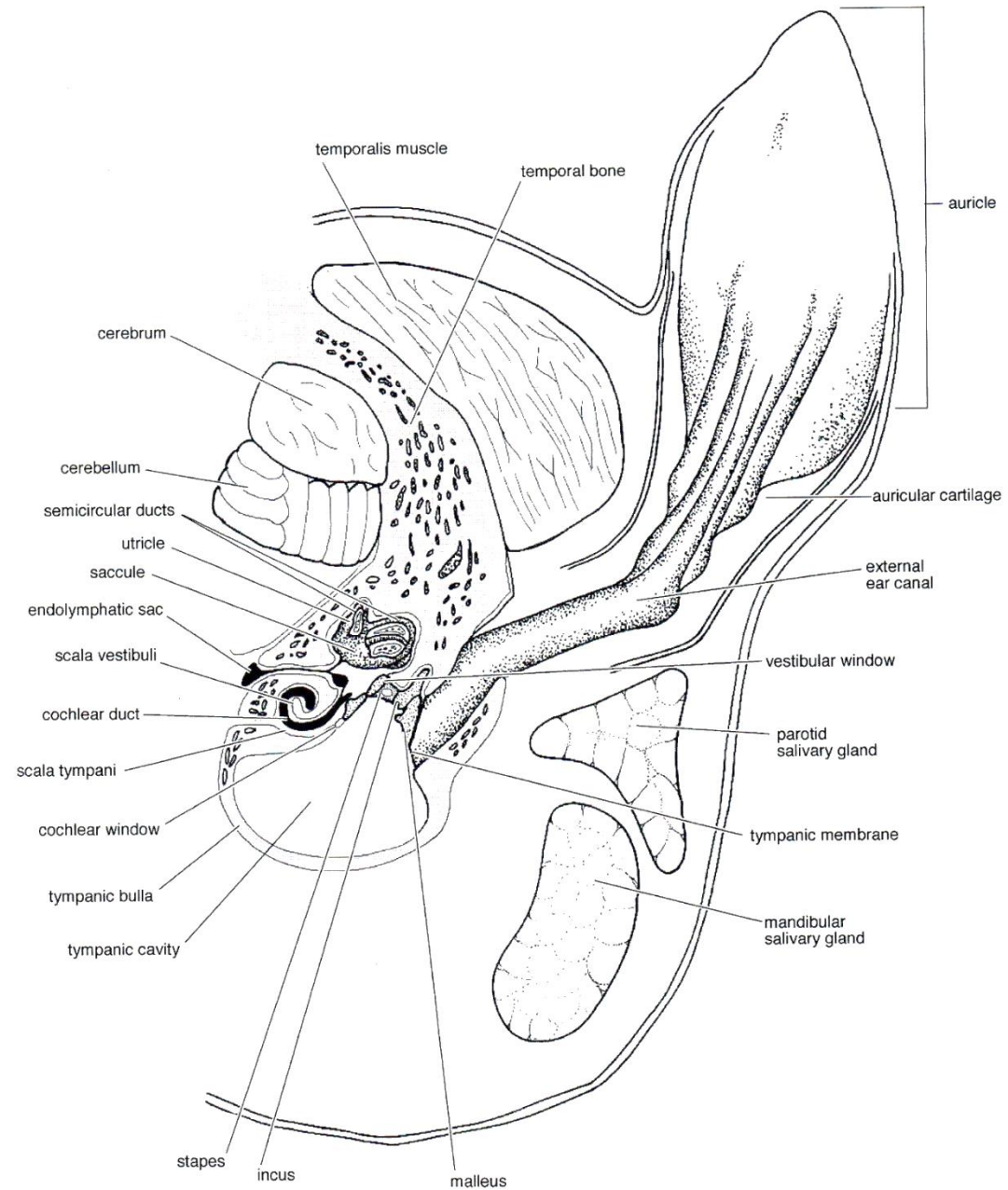
A

B

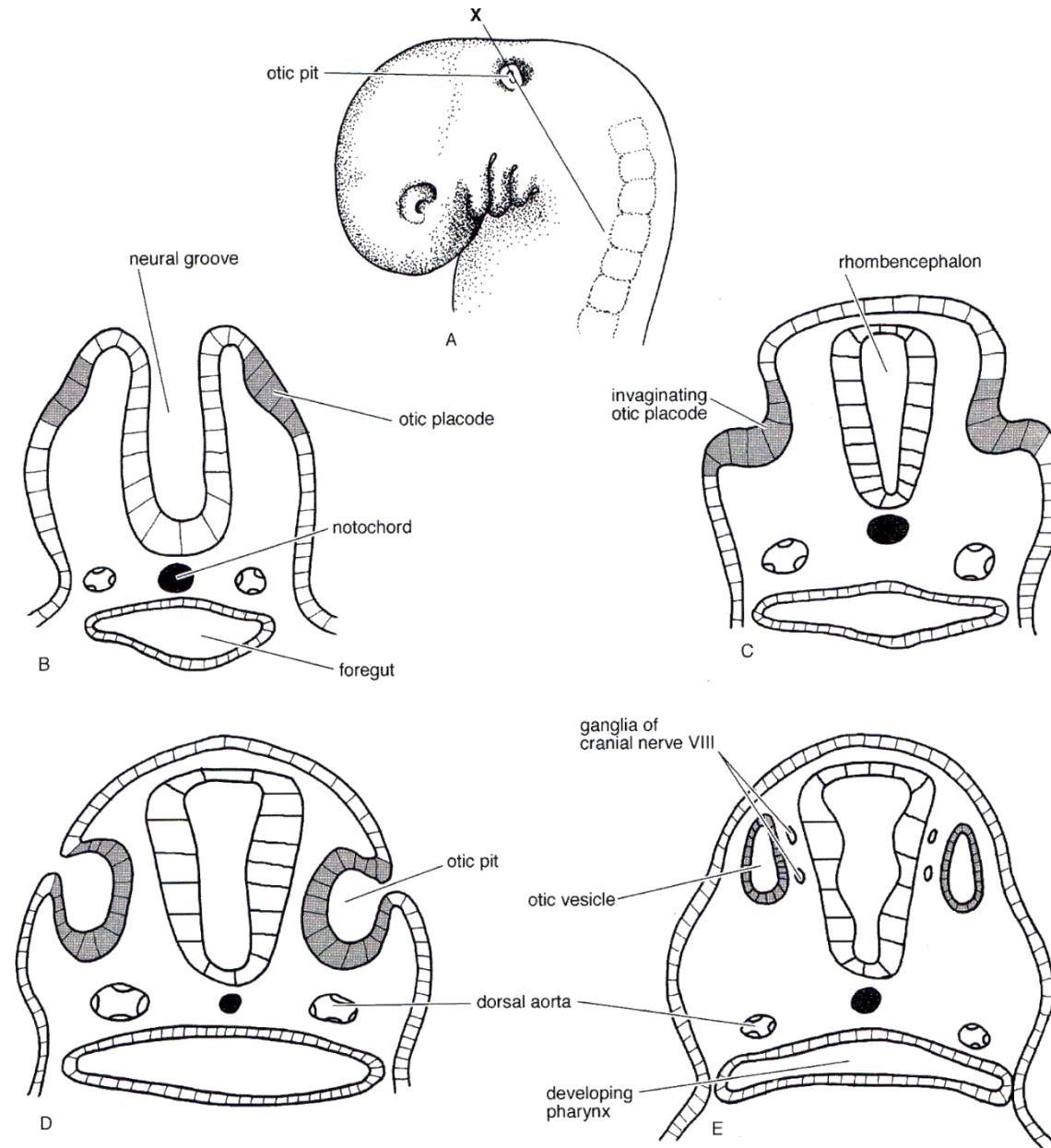
Vývoj hypofýzy



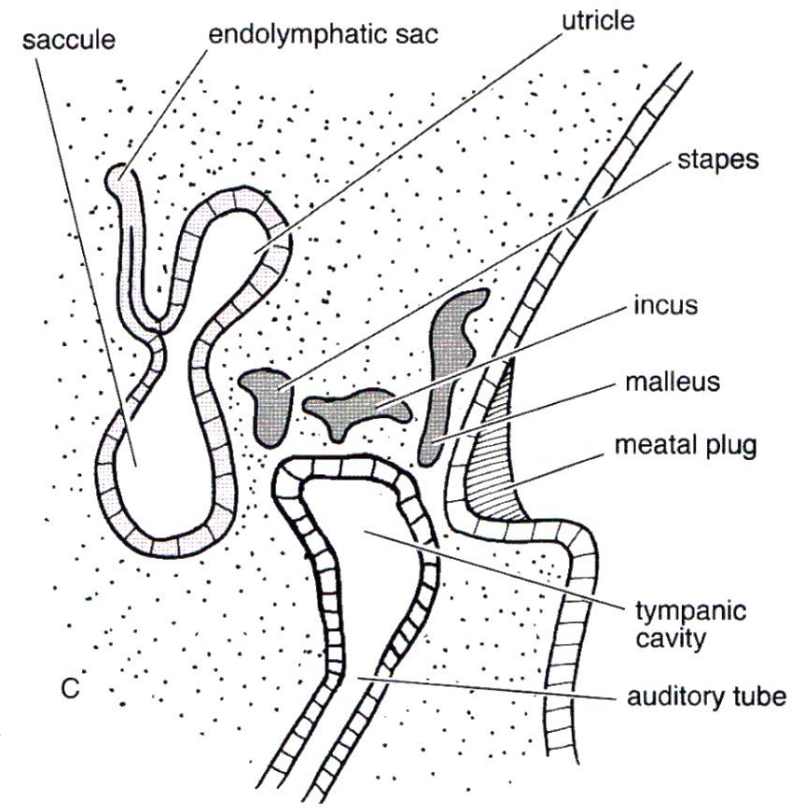
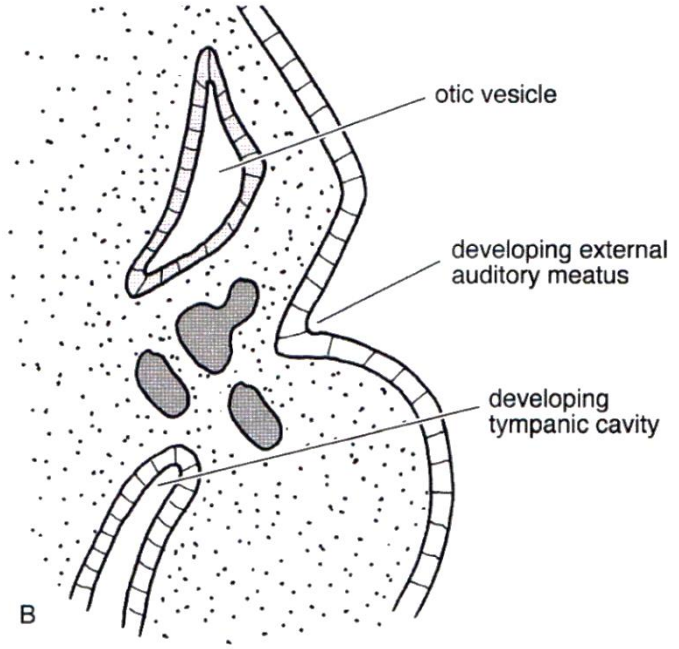
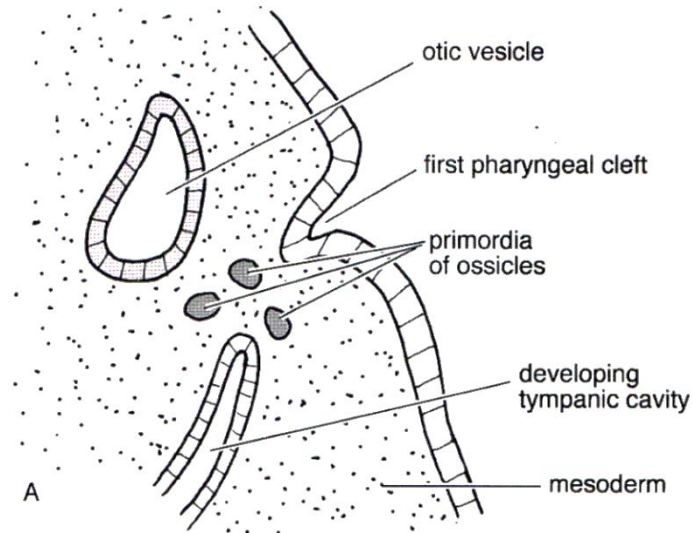
Vývoj ucha



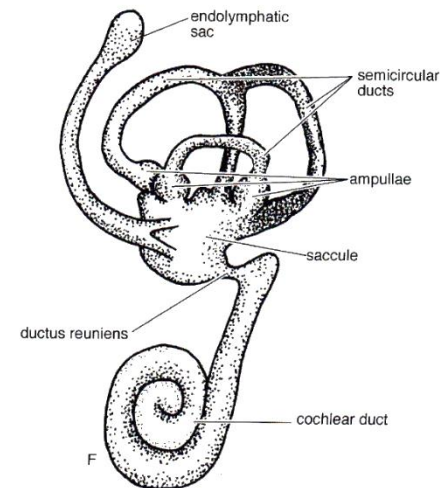
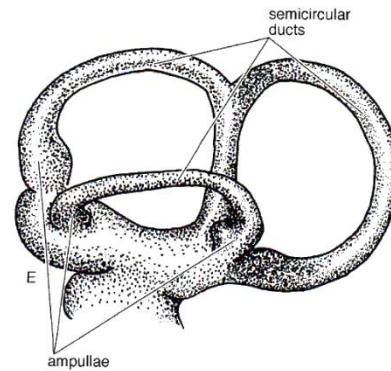
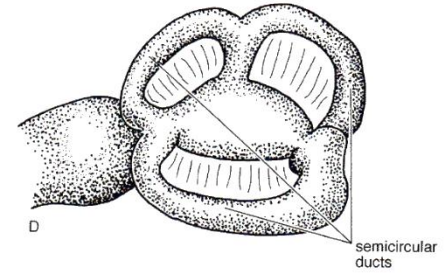
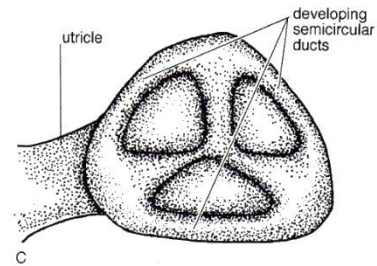
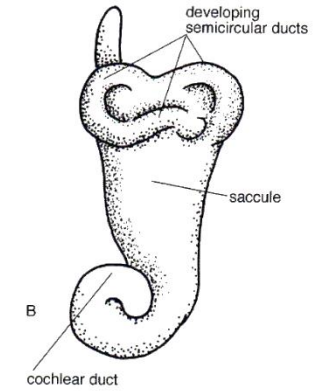
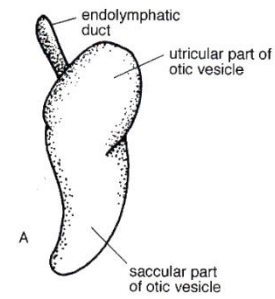
Vývoj ucha



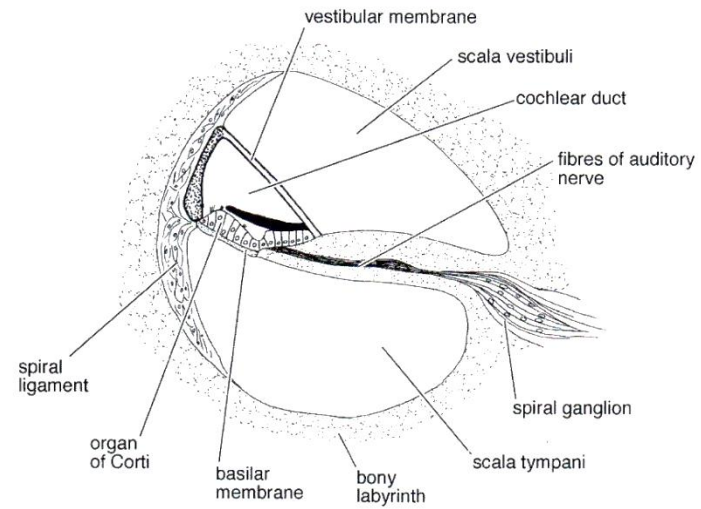
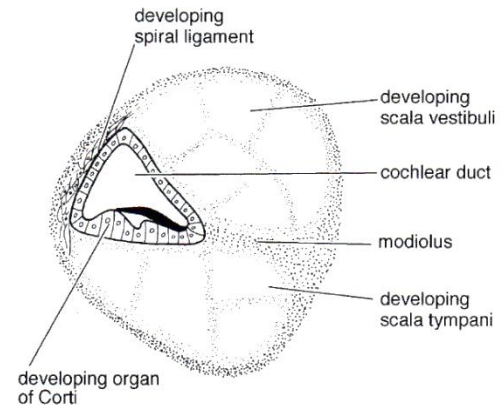
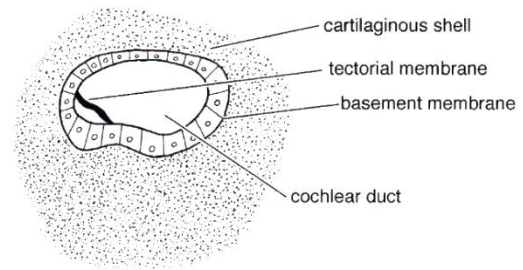
Vývoj ucha



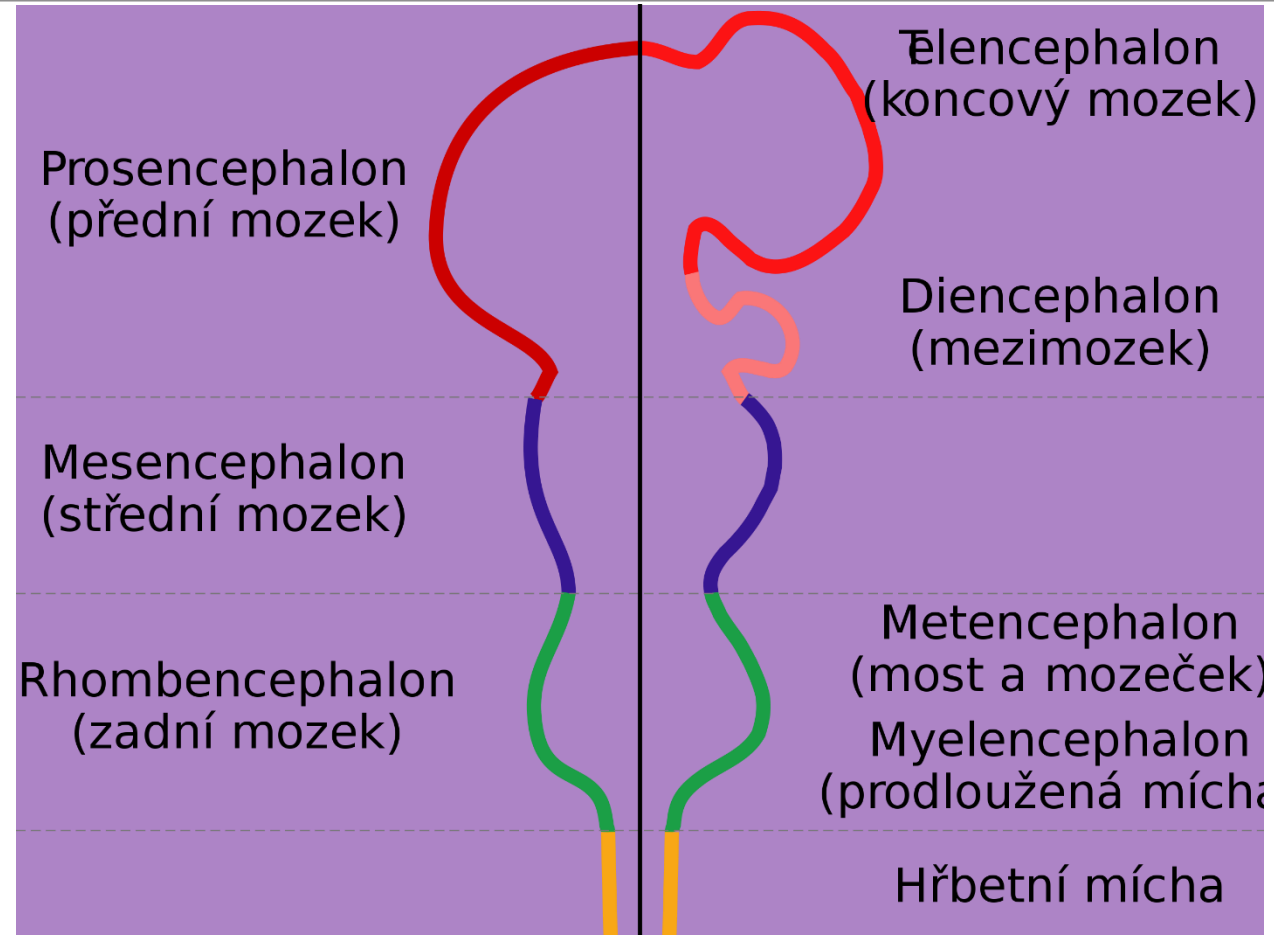
Vývoj ucha



Vývoj ucha

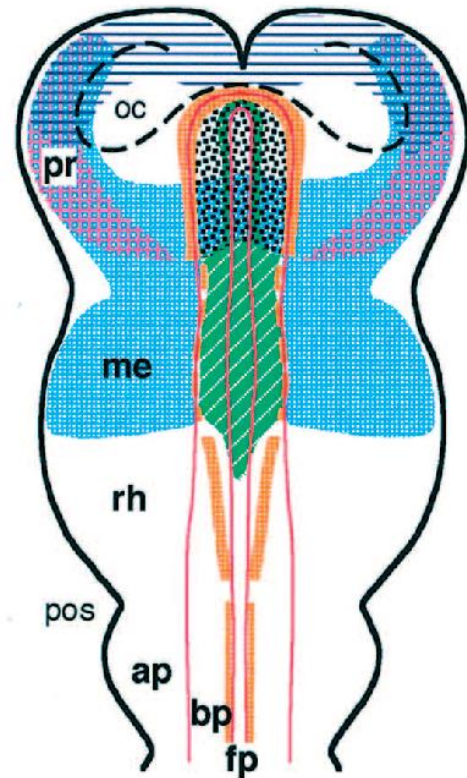


Regionalizace mozku

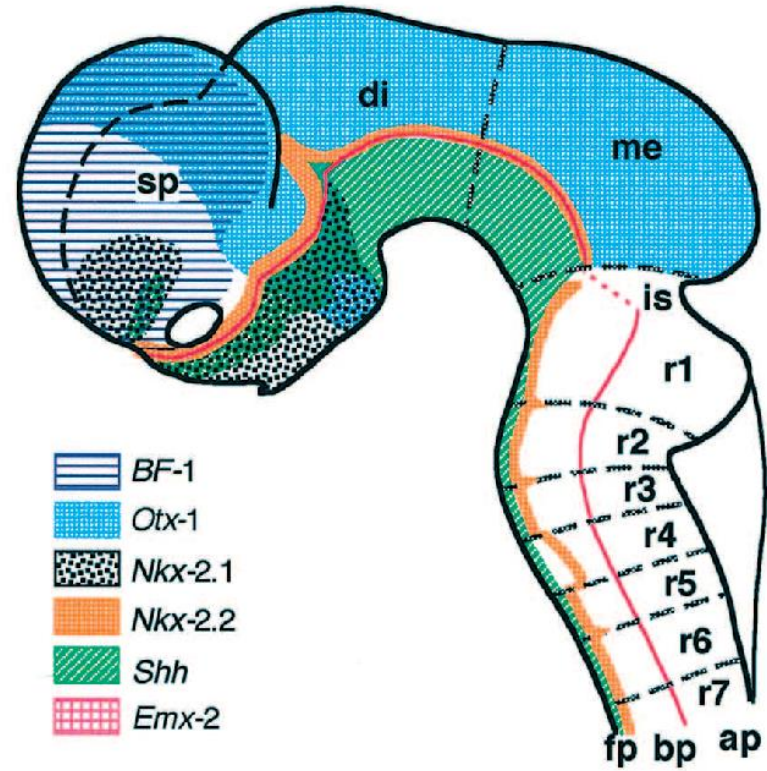


Regionalizace mozku

A Neural plate
(7-8 somites)



B 10.5 dpc brain



Vývoj mozku

