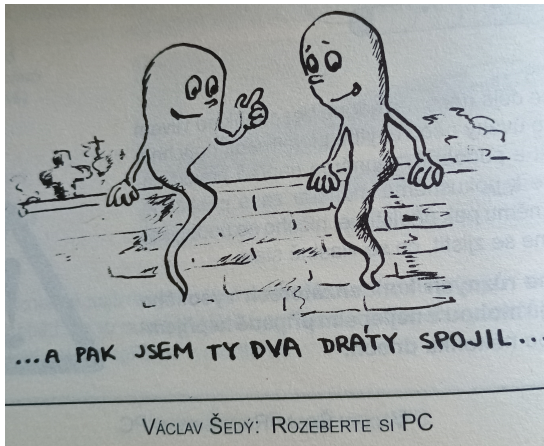


Bezpečnost práce

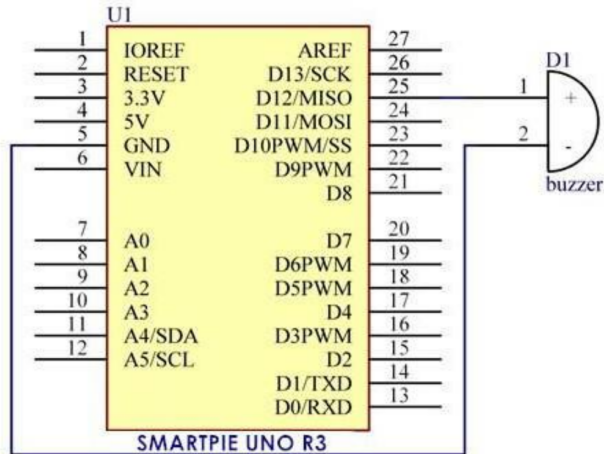
odpojit USB kabel ⇒ zapojit obvod ⇒ zkontrolovat ⇒ připojit USB kabel



Referenční příručka k příkazům

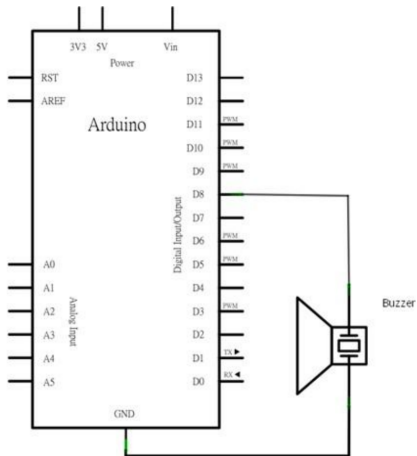
<https://docs.arduino.cc/language-reference/>

Uloha-4-AB



manuál stavebnice KUONGSHUN

Uloha-5-PB



manuál stavebnice KUONGSHUN

Active Buzzer

má oscilátor

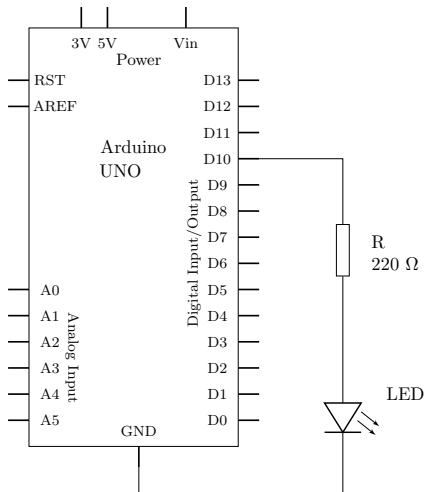
Passive Buzzer

generuje jednotlivé tóny

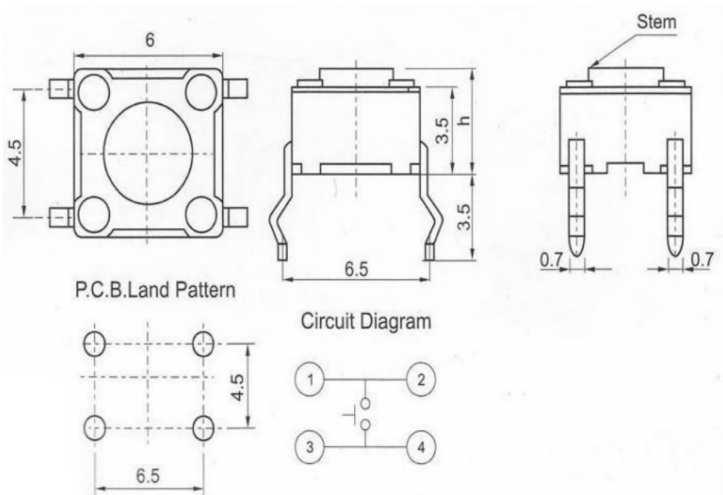
příkaz: `tone(pin, frequency, duration);`

Uloha-6-LED1

změna jasu analogWrite(pin, duty);

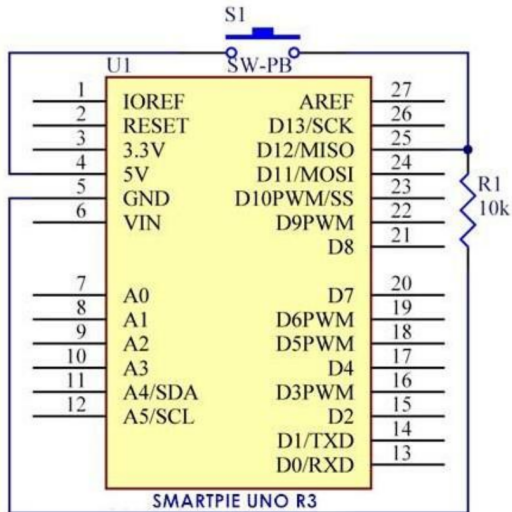


Uloha-7-Button



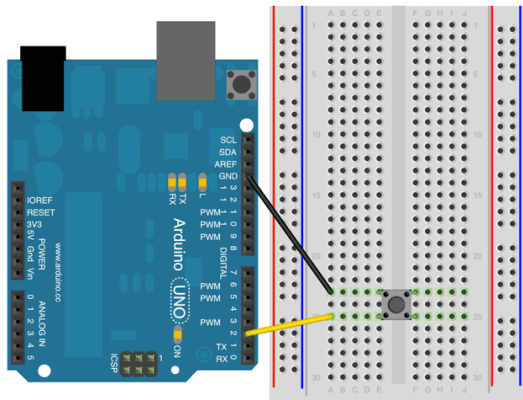
manuál stavebnice KUONGSHUN

Uloha-7-Button



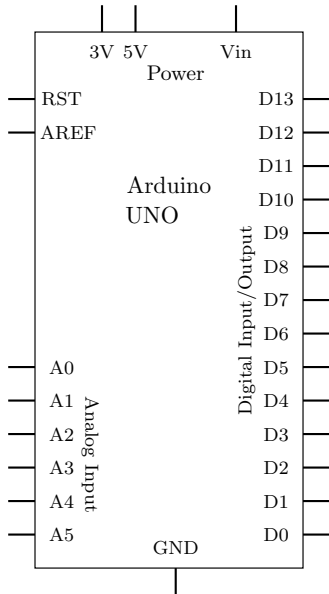
manuál stavebnice KUONGSHUN

Uloha-8-Button1



<https://docs.arduino.cc/tutorials/generic/digital-input-pullup/>

Uloha-9-monitor



Uloha-9-monitor

Nástroje ⇒ Seriový monitor

Serial.print

Serial.println

Uloha-10-relay

S \Rightarrow Pin 2

+ \Rightarrow 5 V

- \Rightarrow GND

Uloha-11-napeti

PE-2016-05 - test AD převodníku Arduina

