

# Bioinformatics

---

Information networks

# Bioinformatics - lectures

- Introduction
- Information networks
- Protein information resources
- Genome information resources
- DNA sequence analysis
- Pairwise sequence alignment
- Multiple sequence alignment
- Secondary database searching
- Analysis packages
- Protein structure modelling

# Information networks

- what is the Internet?
- how do computers find each other?
- FTP and Telnet
- what is the Worl Wide Web?
- HTTP, HTML and URL
- EMBnet, EBI, NCBI
- SRS and ENTREZ

# What is the Internet?

- Global network of computer networks that link government, academic and business institutions.
- communication by **TCP/IP**  
(Transmission Control Protocol/Internet Protocol)
- computers - **nodes**, data - **packets**
- packets may not be transferred directly from one computer to another

# How do computers find each other?

- Each computer is assigned **IP address**

147.251.28.2

machine.site.domain

bilbo.chemi.muni.cz

- **FTP** - File Transfer Protocol
- **Telnet** - remote connection

## Example of Internet domains and subdomains

<i>Country-based domains</i>		<i>Other domains</i>		<i>Subdomains</i>	
Australia	.au	Educational	.edu	Academic	.ac
Denmark	.dk	Commercial	.com	Company	.co
Finland	.fi	Governmental	.gov	Other organisation	.org
France	.fr	Military	.mil	General	.gen
Germany	.de				
Greece	.gr				
Hungary	.hu				
Ireland	.ie				
Israel	.il				
Italy	.it				
Netherlands	.nl				
New Zealand	.nz				
Poland	.pl				
Portugal	.pt				
South Africa	.za				
Spain	.es				
Sweden	.se				
Switzerland	.ch				
United Kingdom	.uk				
USA	.us				

# What is the World Wide Web?

- Developed at CERN - the European Laboratory of Particle Physics.
- The purpose was sharing of information.
- **Hypermedia based information system.**
- The most advanced information system found on the web.
- Very popular - almost synonymous with the Internet.

# Web browsers

- Browser is the **client** communicating with **servers** using standard protocols.
- **Home page** is the first point of contact between browser and the server.

Lynx - academic, VT100 terminal

Mosaic - academic, X-windows

Netscape Navigator - commercial

Internet Explorer - commercial



# HTTP, HTML and URL

- **HTTP** - HyperText Transport Protocol  
documents exploited by browsers are written in hypertext and transferred by HTTP
- **HTML** - HyperText markup Language  
standard language for writing a hypertext
- **URL** - Uniform Resource Locator  
unique address for a document  
example: <http://www.chemi.muni.cz/~jiri>

# EMBnet, EBI, NCBI

- 1988 established the network of European biocomputing and bioinformatics laboratories.
- Eliminates the need for multicopies of biology databases and retrieval software.
- Hinxton Hall = Sanger Centre + MRC Human Genome Mapping Project Resource Centre + European Bioinformatics Institute (**EBI**)
- National Center for Biotechnology Information (**NCBI**)

# SRS, ENTREZ and LinkDB

## SRS - The Sequence Retrieval System

- maintained by **EBI**
- network browser for databases in molecular biology
- allows indexation of flat-file databases
- allows **customised search** of selected databases
- link databanks: sequence, structure, bibliography, etc.

## ENTREZ

- integrates databases of **NCBI**
- less flexible than SRS
- valuable concept of **neighbouring**
- link databanks: DNA and protein sequences, genome data, structural data, PubMed bibliography

# SRS, ENTREZ and LinkDB

## LinkDB

- maintained by **Institute for Chemical Research**, Japan
- network browser for databases in DBGET and KEGG (Kyoto encyclopedia of genes and genomes)
- link databanks: sequence, motifs, structure, amino acid properties, ligands, **metabolic pathways**



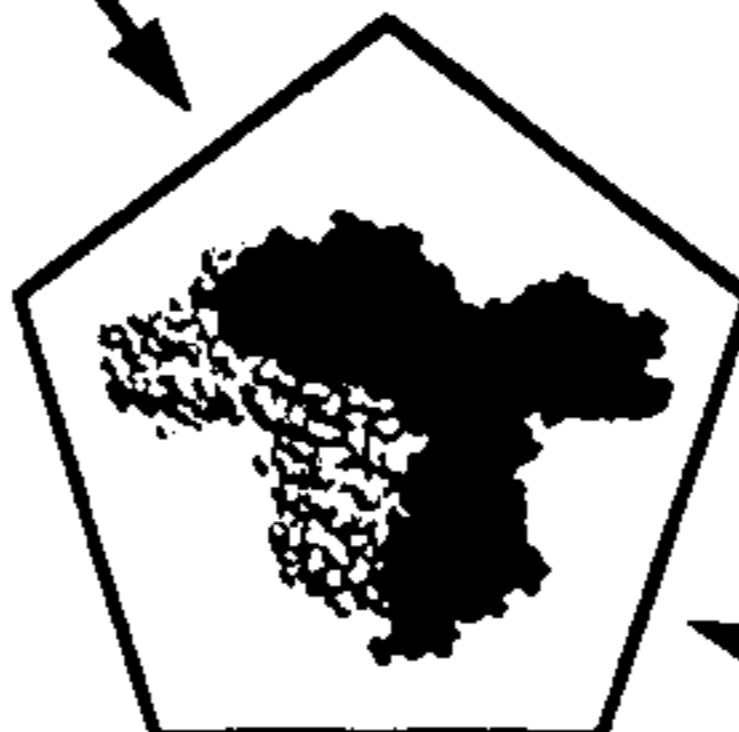
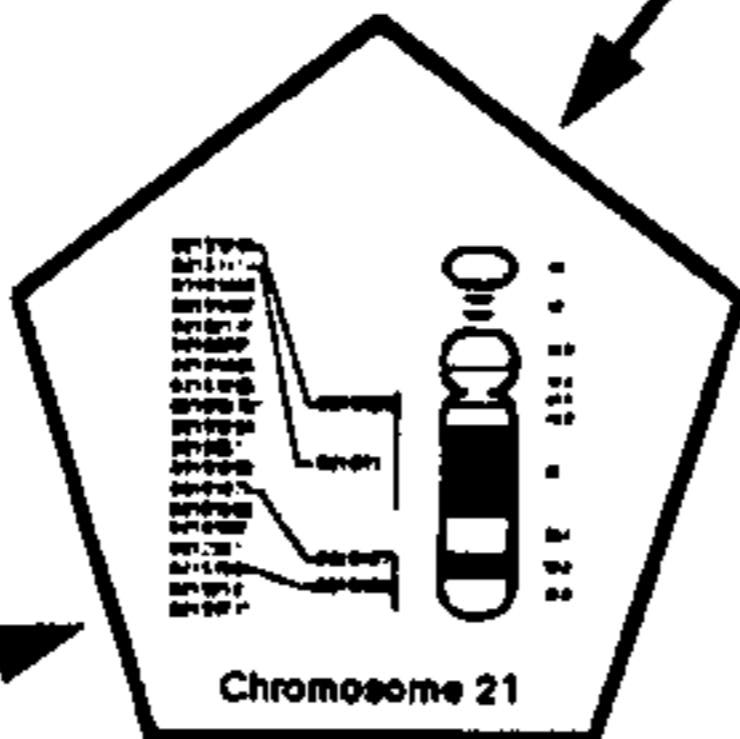
MEDLINE



STGGT  
TCTATTATT  
GGAAGCTAAGGATA  
CGCTGATGTGAGGTGA  
TCGGTTCTATCTGCA  
AGCATGGATATTG  
GCTTATAGGCTA  
CTGATGTGAGG

ILAI  
REGSWQIPC  
RKKGREGDHIVLID  
ILLNNAWASVLPESDS  
SDSGPLIILHEREKR  
ALAMAREENSPNCT  
IKRESAEDSEDI  
KKTDEDDHIVL

Links



Nucleotide Sequences

Protein Sequences

Genomes

Structures



LinkDB

# DBGET Database Links

