

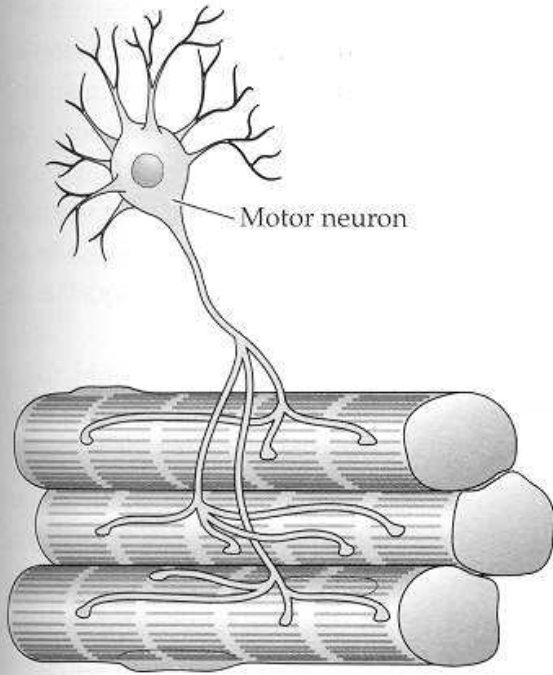
Osové

Disperzní

Trubicovitě

Fibrilární

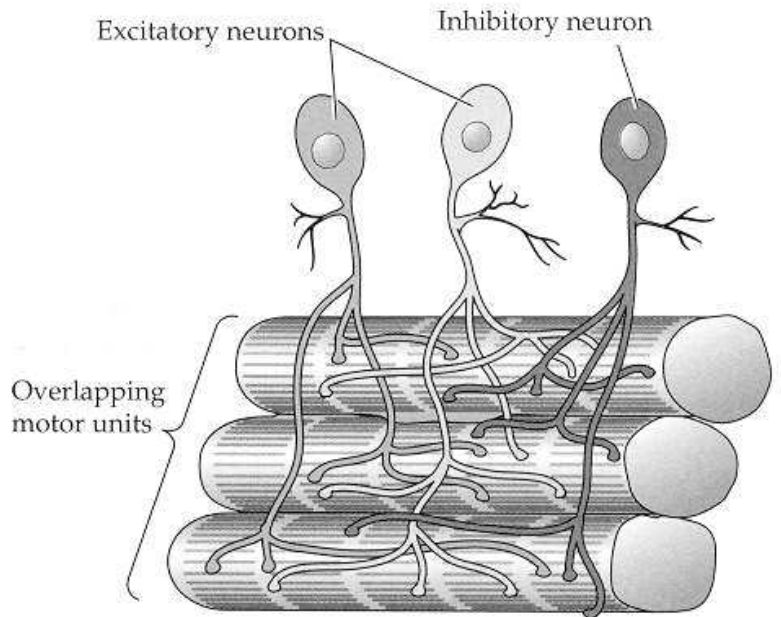
(a) Vertebrate tonic muscle fibers



Motor neuron

Multiterminal innervation

(b) Arthropod muscle fibers

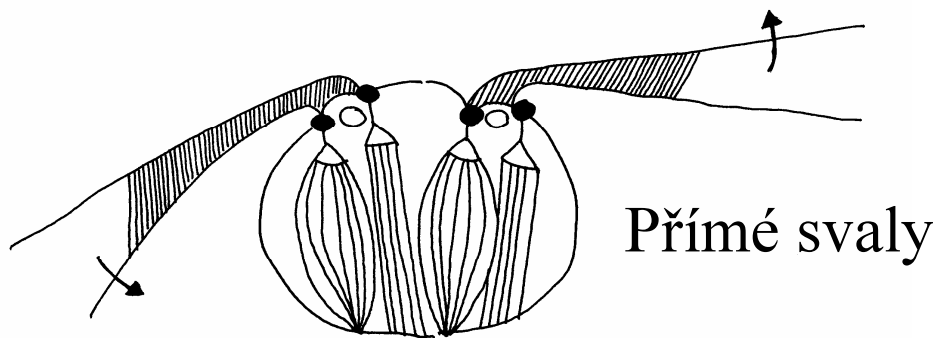


Excitatory neurons

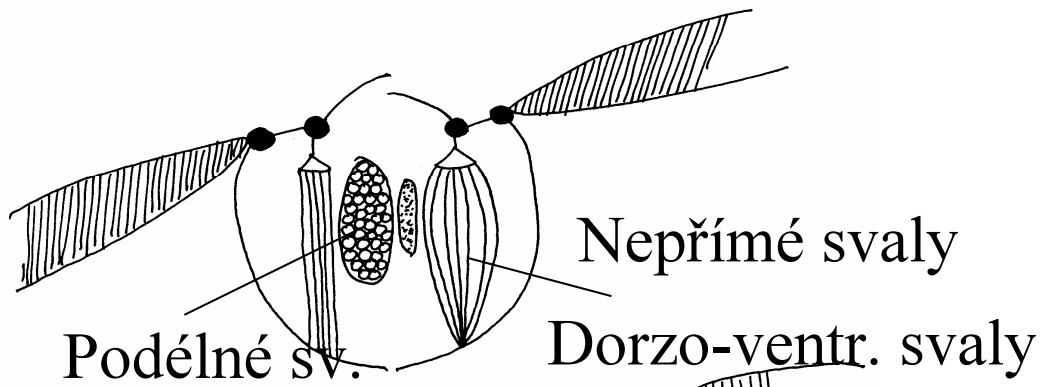
Inhibitory neuron

Overlapping motor units

Polyneuronal, multiterminal innervation



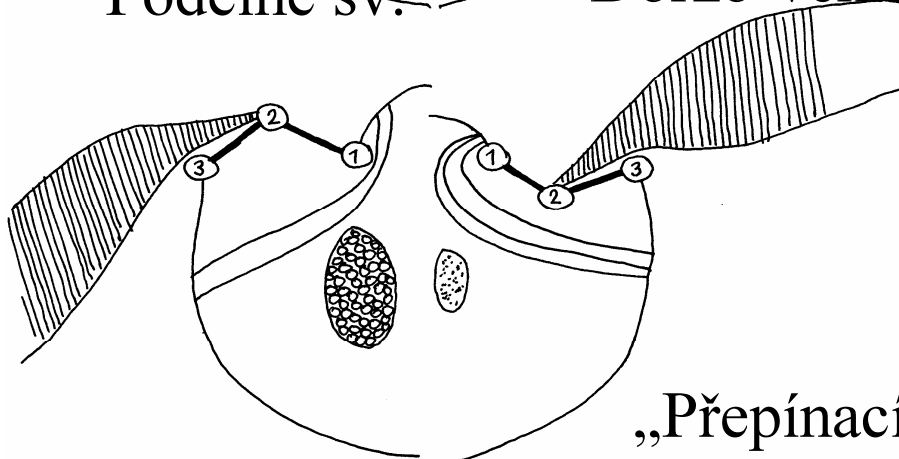
Přímé svaly



Nepřímé svaly

Podélné sv.

Dorzo-ventr. svaly



„Přepínací“ mechanismus