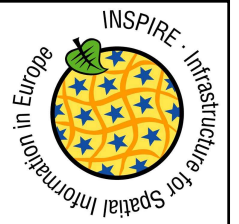




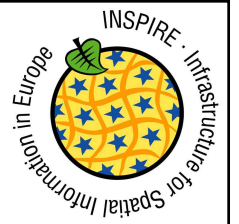
# INSPIRE vision



1. Data should be collected once and maintained at the level where this can be done most effectively
2. it should be possible to combine seamlessly spatial information from different sources across Europe and share it between many users and application
3. it should be possible for information collected at one level to be shared between all the different levels, detailed for detailed investigations, general for strategic purposes
4. geographic information needed for good governance at all levels should be abundant under conditions that do not refrain its extensive use
5. it should be easy to discover which geographic information is available, fits the needs for a particular use and under which conditions it can be acquired and used
6. geographic data should become easy to understand and interpret because it is properly documented and can be visualised within the appropriate context selected in a user-friendly way



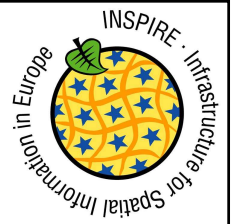
# Examples of Problems



- Lack of use of standards
  - incompatible information
  - incompatible information systems
  - fragmentation of information
  - overlap
- Lack of co-ordination
  - across borders
  - between levels of government that are the main data providers
- Lack of data
- Data policy restrictions
  - pricing, copyright, access rights, licensing policy

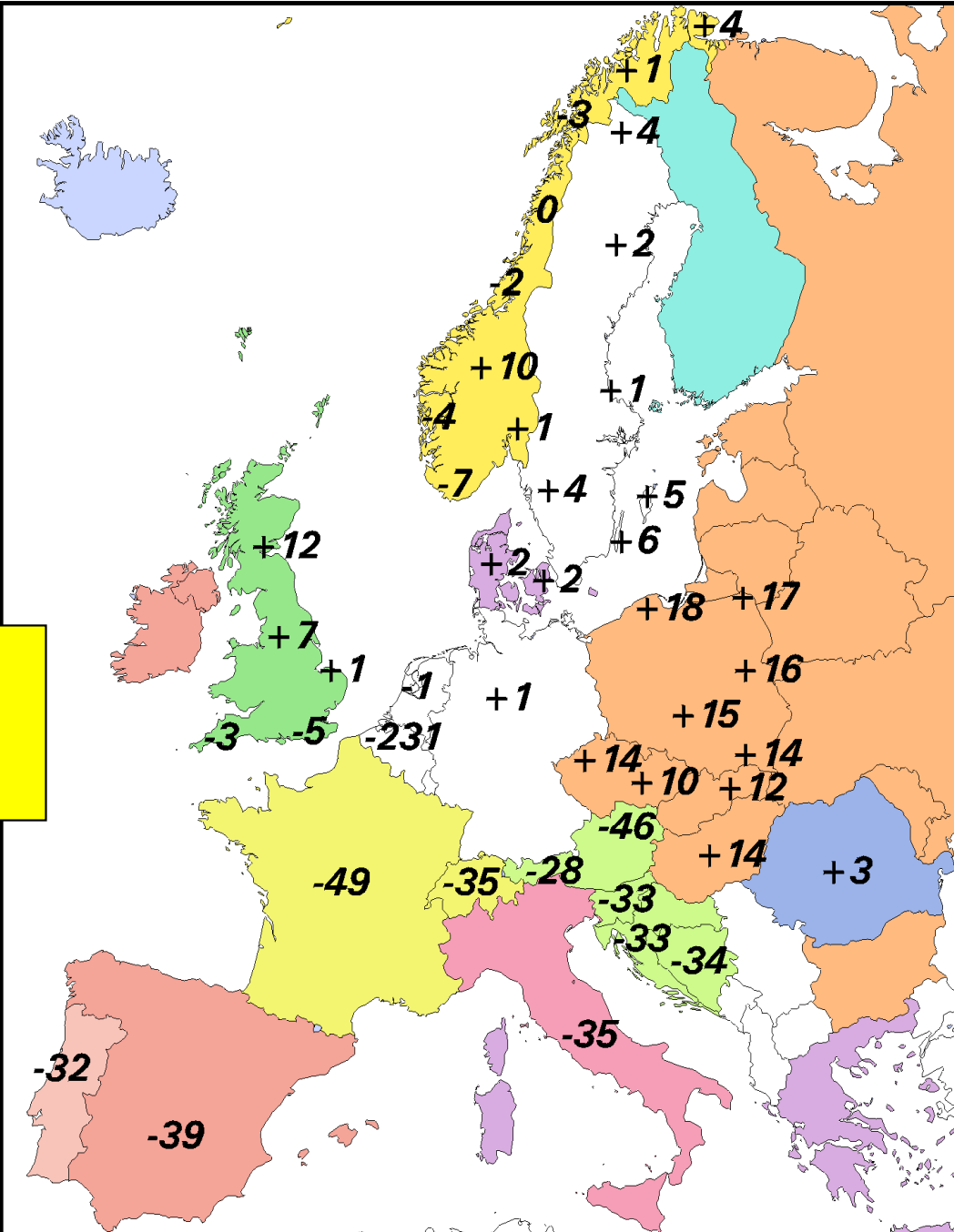


# Differences in national heights



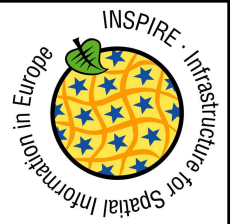
GI standardisation:  
Need of a European  
Vertical Reference  
System

Differences between UELN  
heights and national heights in  
Europe (in cm)





# Need for action: INSPIRE



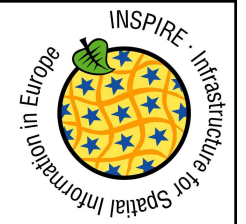
- Required by 6EAP
  - earth monitoring, policy evaluation, indicators, Aarhus
- Geographic information is increasing used to support environmental policy (knowledge-based approach)
  - urban waste water, nitrates, thematic strategies, air quality monitoring, noise, ...
- Explicitly required by WFD
  - Provide river basin characterisation in GIS format

**Without a co-ordinated framework:  
problems will persist !**

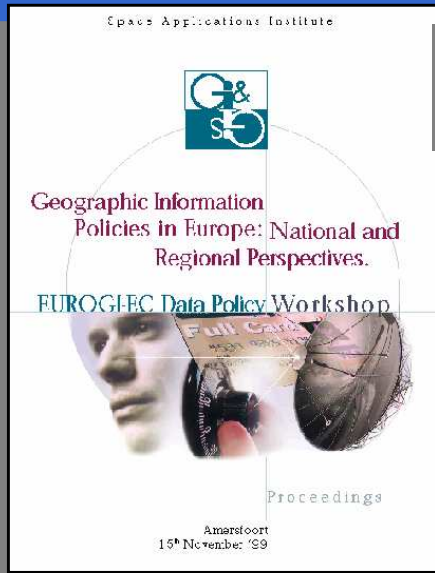




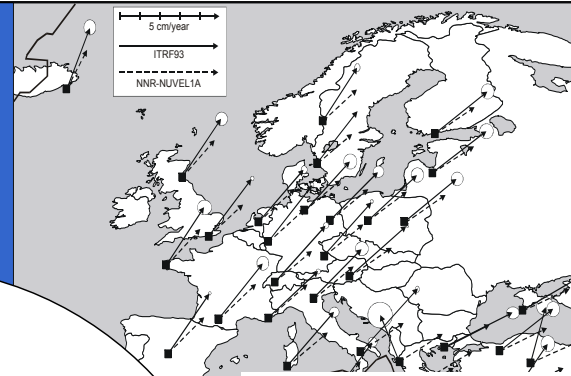
# Infrastructure for Spatial Information in Europe



**Different Policies and standards**



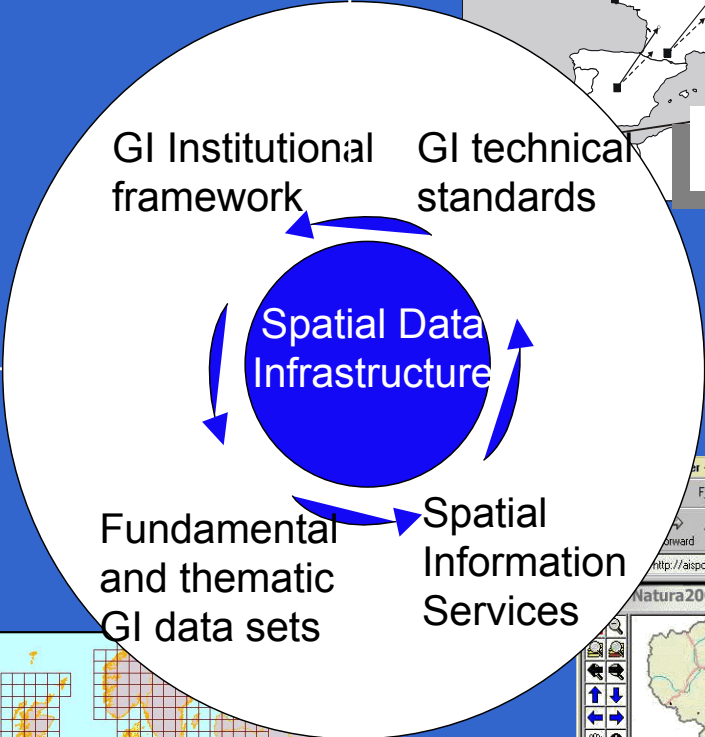
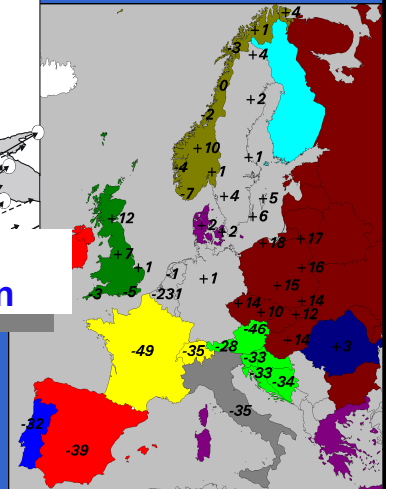
**Technical Support to GI policy development**



**Europe is moving 3cm/ year**

**Standards implementation**

**Different sea level in Europe**

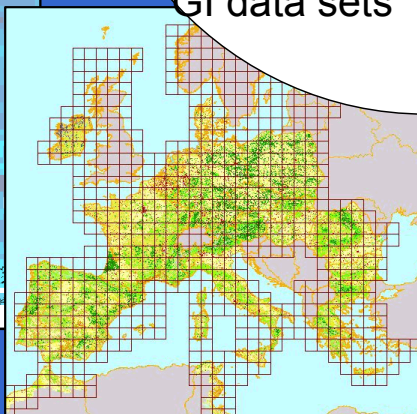
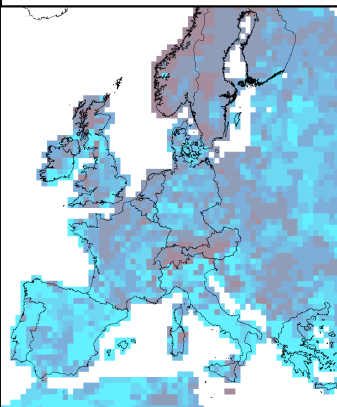


**Technical Support To data set creation**

**Meteo data**

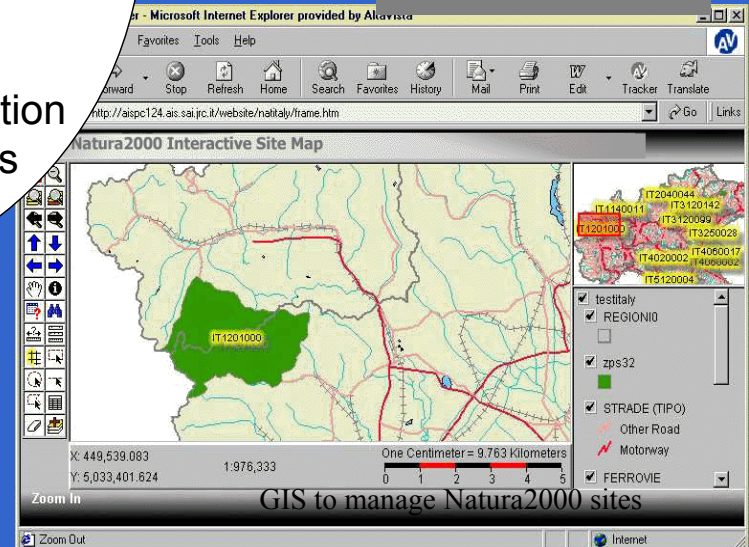


**Catchments**



**Land Cover**

**GIS for Natura 2000**

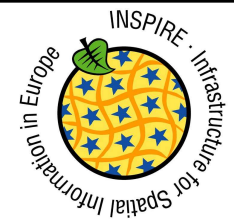


**Needs to create european spatial data sets**

**eEurope : eGovernment on line**



# The INSPIRE driving forces



DG ENV



eurostat

European Environment Agency



Institute for  
Environment and  
Sustainability

**COGI**



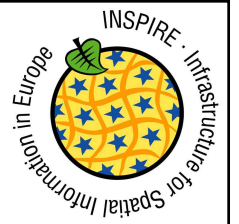
**Main Commission DG's**  
(AGRI, TREN, REGIO,  
FISH, INFISO, ...)

## INSPIRE Expert Group

Member States Environmental and geographic information ministries, Accession countries, Regions, EFTA Countries, Umbrella organisations, ETC/TE, ESPON, UNEP



# INSPIRE objectives



**Make relevant, harmonised spatial data available for Community Environmental Policy (formulation, implementation, monitoring and evaluation) and for the citizen ...**

**... through the establishment of integrated spatial information services, based upon a distributed network of databases, linked by common standards and protocols to ensure compatibility.**



**COGI**  
Chair: ESTAT

**INSPIRE Expert Group**  
Chair : DG ENV & ESTAT

**Thematic Components**

**Phase 1:  
Environmental Sector**

**Technical Co-ordination & Secretariat**  
JRC Ispra - Institute for Environment and Sustainability

.....  
urban  
biodiversity noise  
soils forest  
seveso water  
**Environmental components**

**Common Reference Data & Metadata**  
Chair : ESTAT

**Architecture & Standards**  
Chair : JRC Ispra

**Legal Aspects & Data Policy**  
Chair : UK

**Funding & Implementation structures**  
Chair : SE

**Impact Analysis**  
Chair : NL

**Inter-sectoral co-ordination**  
Chair: ESTAT

**Environmental thematic co-ordination**  
Chair: EEA

**Agricultural thematic co-ordination**  
Chair:

**Transport thematic co-ordination**  
Chair:

**Other thematic co-ordination**  
Chair:

**Agricultural components**

**Transport components**

**Other components**

**Horizontal Components**

**INSPIRE**

**Phase 2: other sectors**



# INSPIRE Expert Group



- 2nd Meeting Vienna 2001-12-17
  - Action plan agreed
  - Composition of Working groups decided

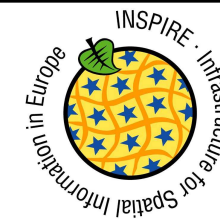


**10 Experts mobilised today!**





# INSPIRE timeline

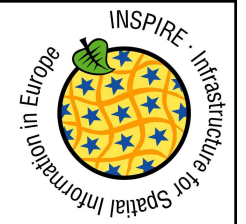


April 2002	Orientation papers by Working groups
June 2002	Position papers by Working groups and user requirements
September 2002	Draft INSPIRE Framework Legislation
December 2002	Proposal for INSPIRE Framework Legislation adopted by Commission
2003	Preparation of daughters
2004	INSPIRE Framework Legislation adopted





# INSPIRE: Example of result



**Layers**

- LIFE Nature Projects
- Countryside Stewardship Schemes 1996
- Special Protection Areas
- Structural Funds Objective 1 & 2
- Commune Boundaries
- CORINE Land Cover

**GIS for Natura2000 - Site Browser**

**Fish** | **Amphibians/Reptiles** | **Invertebrates** | **Plants**

**General** | **Habitat** | **Birds** | **Mammals**

**Site Code:** UK9006111

**Site Name:** Humber Flats, Marshes and Coast (Phase 1)

**Site Quality Characteristics:** ARTICLE 4.1 QUALIFICATION (79/409/EEC)  During the breeding season the area regularly supports:    *Sterna*

**Site Vulnerability:** This site is dependant upon the maintenance of coastal processes. Key issues include the effects of coastal squeeze and sediment

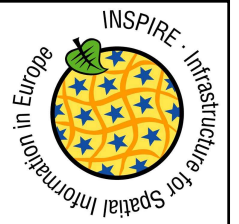
**Map Labels:** Brighton Meadows, LIFE99NAT/UK/6086, Humber Flats, Marshes and Coast (Phase 1)

- Natura2000 sites
- Natura2000 db species, habitats
- LIFE Nature project locations
- Areas eligible for Structural Funds (Ob. I,II)
- CORINE Land Cover
- Administrative Regions
- Agri-environment schemes





# <http://europa.eu.int/comm/environment/geo/index.htm>



Geographic information in support of Environmental Policy - Microsoft Internet Explorer

File Edit View Favorites Tools Help


**IMPORTANT LEGAL NOTICE** - The information on this site is subject to a [disclaimer](#) and a [copyright notice](#).

Europa en

The European Commission

Environment

## Geographic information in support of Environmental Policy



© ESA All rights reserved.

The [Sixth Environmental Action programme](#) identifies better information as one of the keys to improve Environmental policy in the next decade. Geographic information plays a special role here, because of its potential to present information in a lively and understandable way to citizens and stakeholders. The Commission is currently preparing two new initiatives to stimulate the availability of environmental information: **INSPIRE** (INfrastructure for SPatial InfoRmation in Europe) and GMES (Global Monitoring for Environment and Security). Implementation of these initiatives will represent an important support to some of the key approaches advocated in the sixth Environmental Action Programme:

- Ensure the implementation of existing environmental legislation;
- Integrate environmental concerns into all relevant policy areas;
- Ensure better and more accessible information on the environment for citizens;
- Develop a more environmentally conscious attitude towards land use.

Both initiatives are broader than environment only, but for both, support to environmental policy is one of the key objectives.

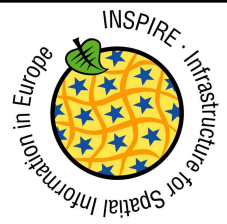
[INSPIRE](#)

The INSPIRE initiative concerns the preparation of Community legislation that aims at making available relevant, harmonised and quality geographic information





<http://www.ec-gis.org/inspire/>



INSPIRE: The INfrastructure for SPatial InfoRmation in Europe - Microsoft Internet Explorer

File Edit View Favorites Tools Help

Back Forward Stop Home Search Favorites Print Copy Paste

Address <http://www.ec-gis.org/inspire/> Go Links >>

- HOME
- WHAT'S NEW
- WHY INSPIRE?
- INSPIRE ORGANISATION
- ACTION PLAN
  
- DIARY
- DOCUMENT ARCHIVE
- CONTACTS
- SDI INITIATIVES
- USEFUL LINKS
- [@Contact Webmaster](#)

# INSPIRE: INfrastructure for SPatial InfoRmation in Europe

*The INfrastructure for SPatial InfoRmation in Europe initiative (INSPIRE) aims at making available relevant, harmonised and quality geographic information for the purpose of formulation, implementation, monitoring and evaluation of Community policy-making.*

Done

Internet