

**Sustainability, development
and security in landscape field
practice**

Alois Hynek₁

Masaryk University in Brno, the Czechlands

Nikola Hynek,

*The University of Plymouth, School of Politics,
Sociology and Law, United Kingdom*











Uherčice

Starovice

HUSTOPEČE

Popice

Strachotín

420

Sakvice

Dolní Věstonice

Horní Věstonice

vod. nádrž Nové Mlýny III.

vod. nádrž Nové Mlýny II.

420

Děvičky

Děvín

Pouzdřany

Pouzdřanský rybník

Svatá

Sázava

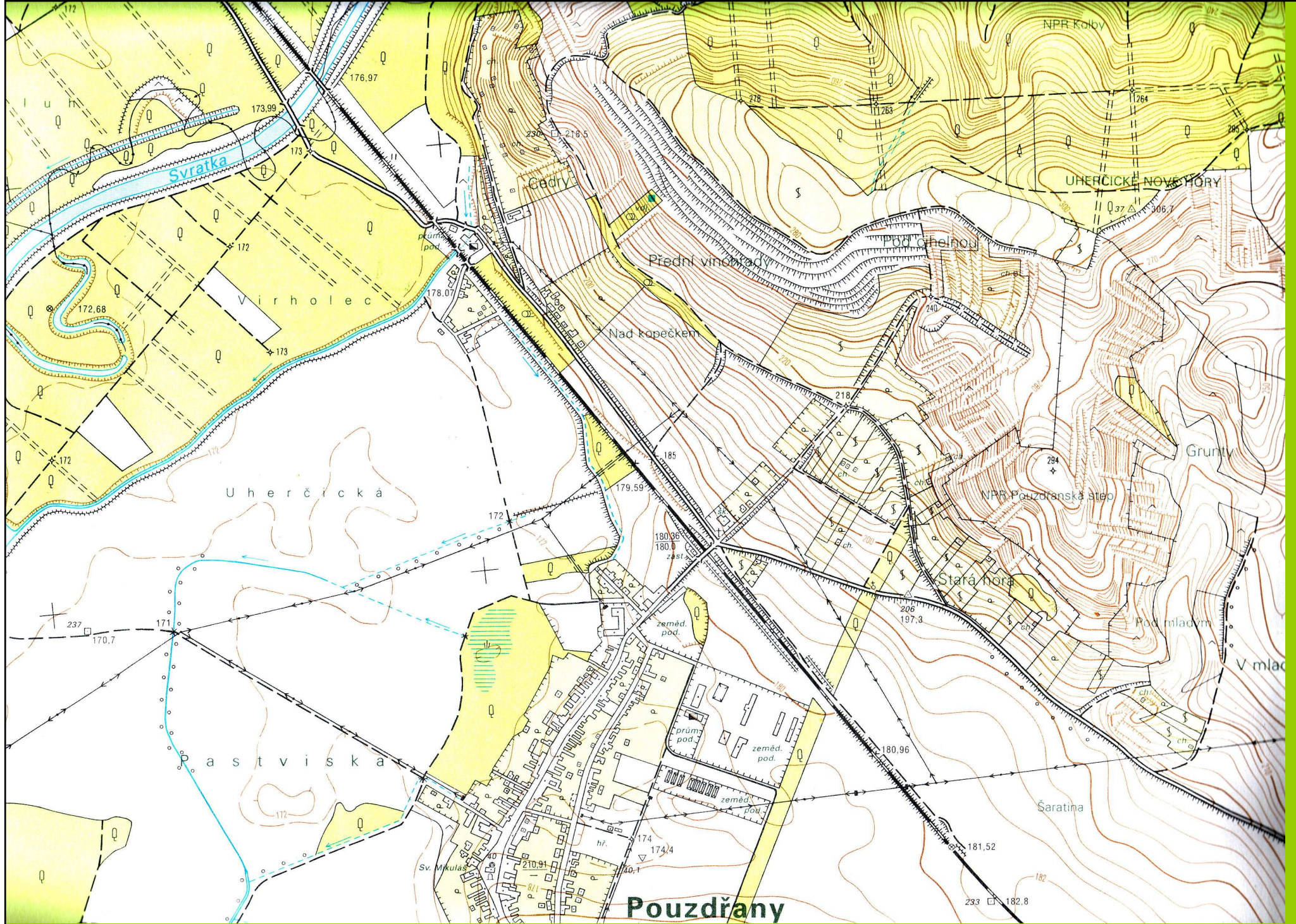
Popický potok

Zaječ

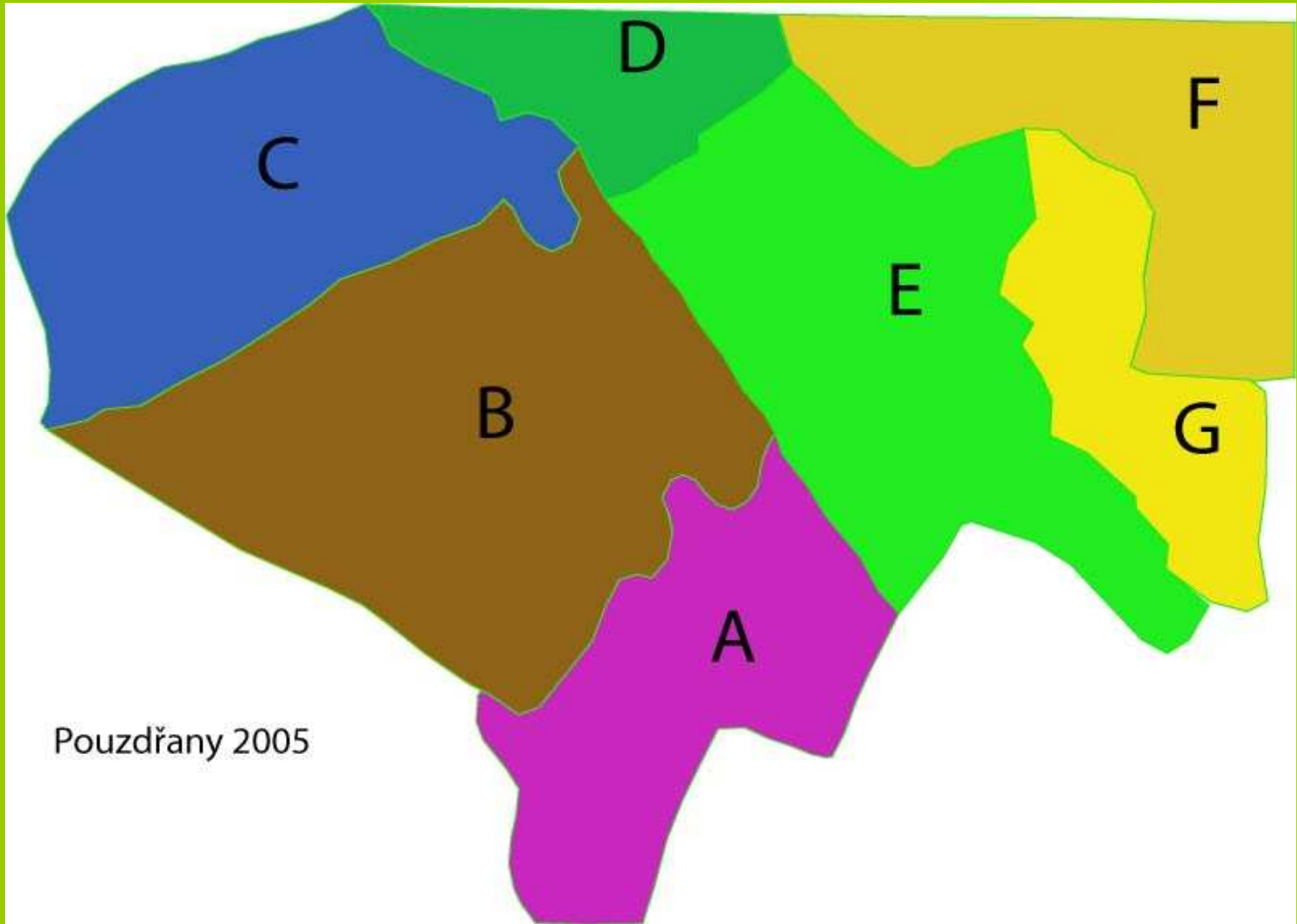
añ

niava

Černánský potok







1. Representation of landscape reality in:

- ✓ **maps, information systems, symbols, icons, visions, metaphors, mass media,**
- ✓ **art - prose and poetry, painting, music...**
- ✓ **land cover, land use at thematic map – spatial pattern of landscape**
- ✓ **information sources, geographical data – official, non-official, imaginative,**
- ✓ **computer cartography, GIS**

understanding and explaining the landscape



Pausram. (Transvaal) 3/8 1910

Nachdruck verboten.



2. Landscape immediate reality in the fieldwork

- ✓ authentic landscape/environmental perception**
- ✓ survey, field observing, key points description, landscape transects**
- ✓ talking to people, participating, ethnographies**
- ✓ landscape policy - planning, strategies, programmes, projects**
- ✓ practicing landscape studies - urban, suburban, subrural, rural issues**



3. Landscape spatial pattern/spatiality

- ✓ physical components sandwich (abiotic, biotized, biotic,)**
- ✓ physical/cultural palimpsest (anthropogenic)**
- ✓ recent human/nature interactions - physical components as resources**
- ✓ processes shaping the landscape, the role of technologies**



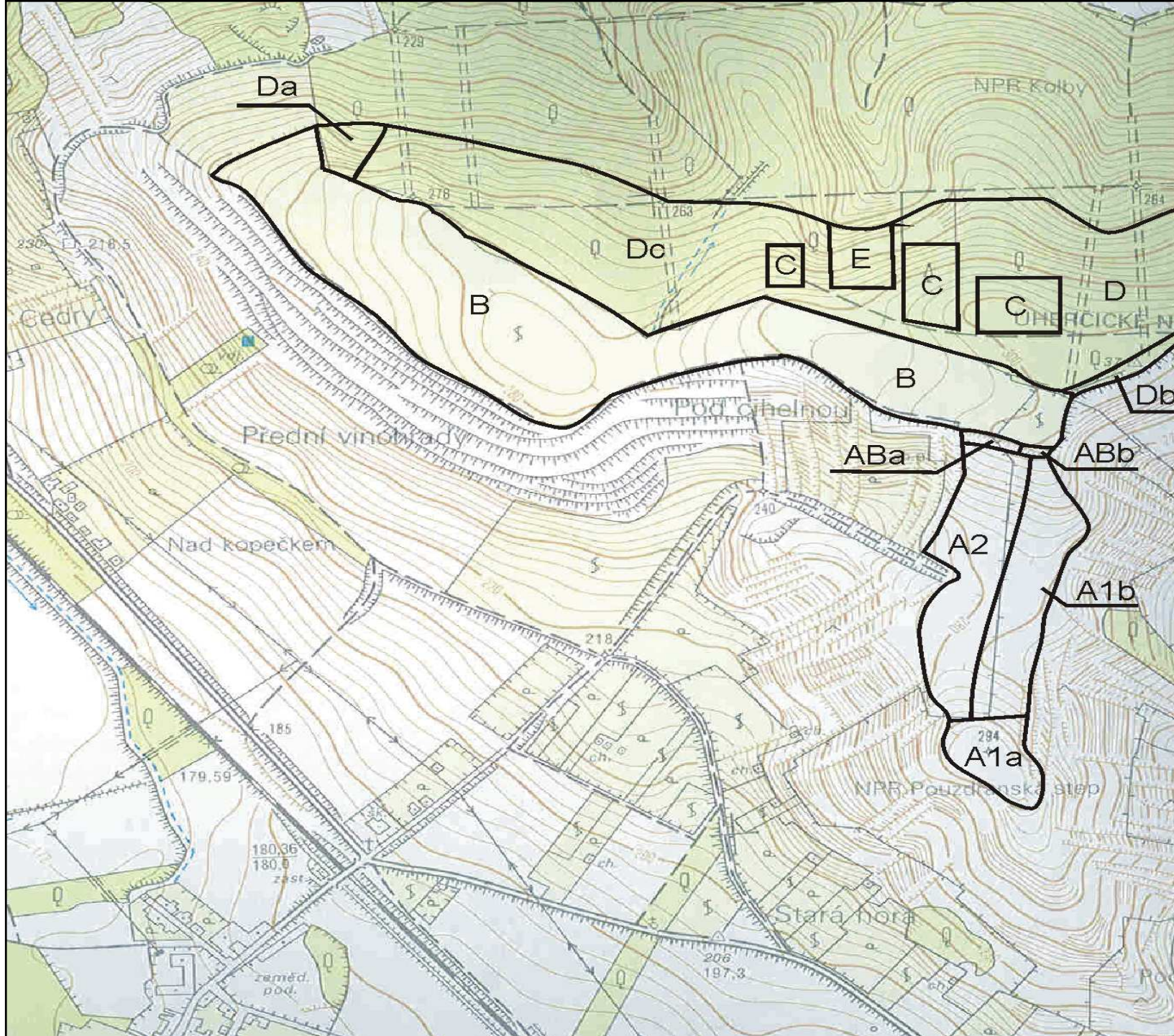
4. Land cover, land use

- ✓ functional spatial segments and their owners and users**
- ✓ applied technologies and human activities in agriculture, manufacture, engineering, transportation, services, housing, recreation, water management, waste management**
- ✓ energy production, transmission and consumption**
- ✓ incorporation into economic and social systems – human resources**



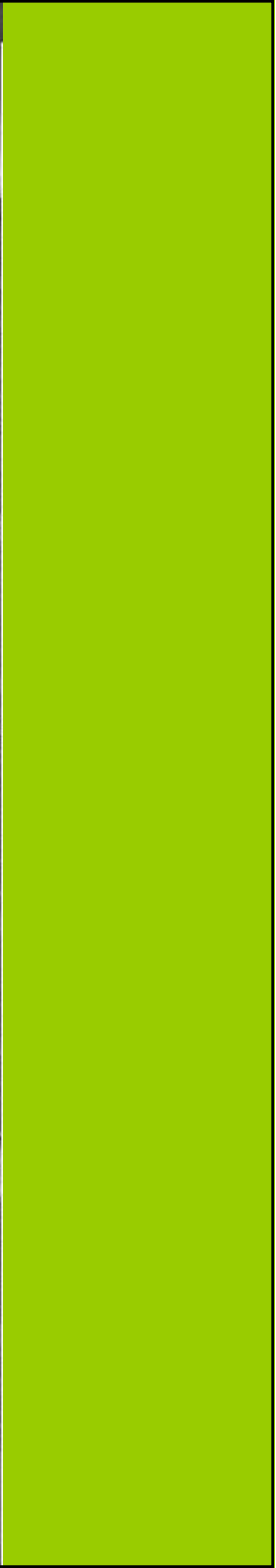
5. Landscape ecosystems

- ✓ **eluvial, transeluvial, transaccumulative, transaquatic, aquatic**
- ✓ **cultural ecosystems pattern, natural/technological systems, infrastructure**
- ✓ **physical structure – matter/energy vertical and horizontal flows**
- ✓ **human activities changing physical landscape to cultural, landscape heritage**
- ✓ **vulnerability and resilience, diversity and biodiversity**



6. Natural capital of landscape ecosystems

- ✓ goods and services in the frame of production-distribution-exchange-consumption**
- ✓ owners and users: assets, stock, yield, income**
- ✓ labour and finance - inside/outside flows**
- ✓ social reproduction**



7.Landscape as a part of human environment

- ✓ perception and imagination, mental maps**
- ✓ pollution, waste production and management**
- ✓ natural disasters/hazards, risks and security**
- ✓ environmental management and infrastructure**
- ✓ protected areas**



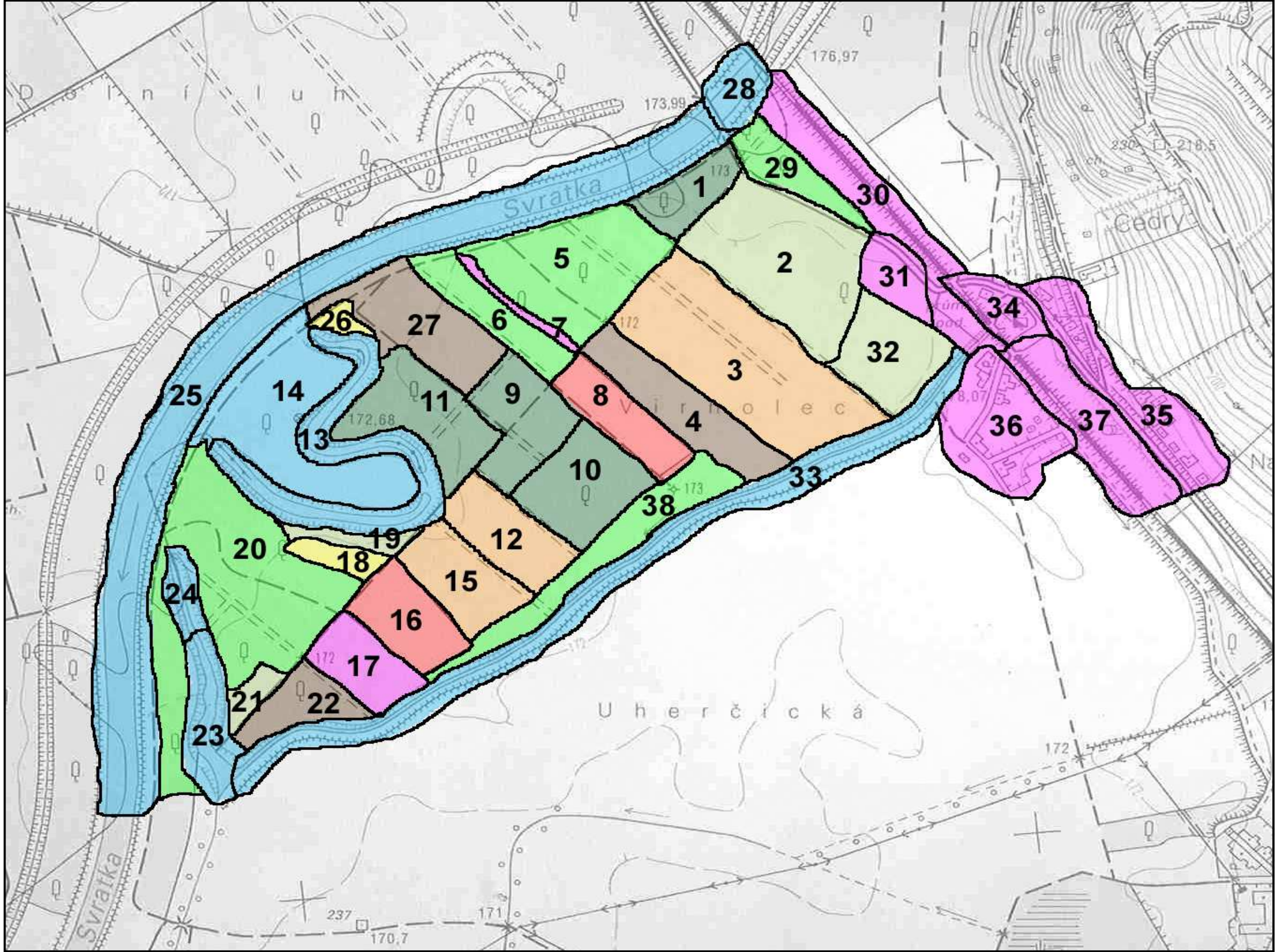
8. Detailed physical components and processes analysis

- ✓ landforms as products and factors on rocks, regolith and slope sediments, anthropogenic landforms**
- ✓ topoclimate - aspect, local circulation**
- ✓ hydricity (hydrocycle)**
- ✓ soil cover structure**
- ✓ vegetation cover – potential/reconstructed and actual phyto(bio)cenoses**











9.Social construction of landscape

- ✓ material and cultural approaches**
- ✓ physical/human resources**
- ✓ analysis and interpretation**
- ✓ evaluation and design**
- ✓ plans, strategies, programmes, projects**
- ✓ social framings**







10.Landscape sustainability- soft, or hard?

- ✓ **symbiosis/conflicts of nature and technology**
- ✓ **ecological/environmental infrastructure, land use regimes**
- ✓ **land use temporal changes, revitalization vs. deterioration**
- ✓ **local/regional/landscape interface**
- ✓ **development – pros and cons**
- ✓ **processes and responses caused by (non)usage**
- ✓ **landscape as a part of production, reproduction and consumption**
- ✓ **proposals of landscape modifications towards sustainability**





TV SERVIS
OPRÁVY A PRŮBEH
TELEVIZNÍ
RÁDIO VÍDEO ANTÉNY
SATELITNÍ TEL. 11 234



