

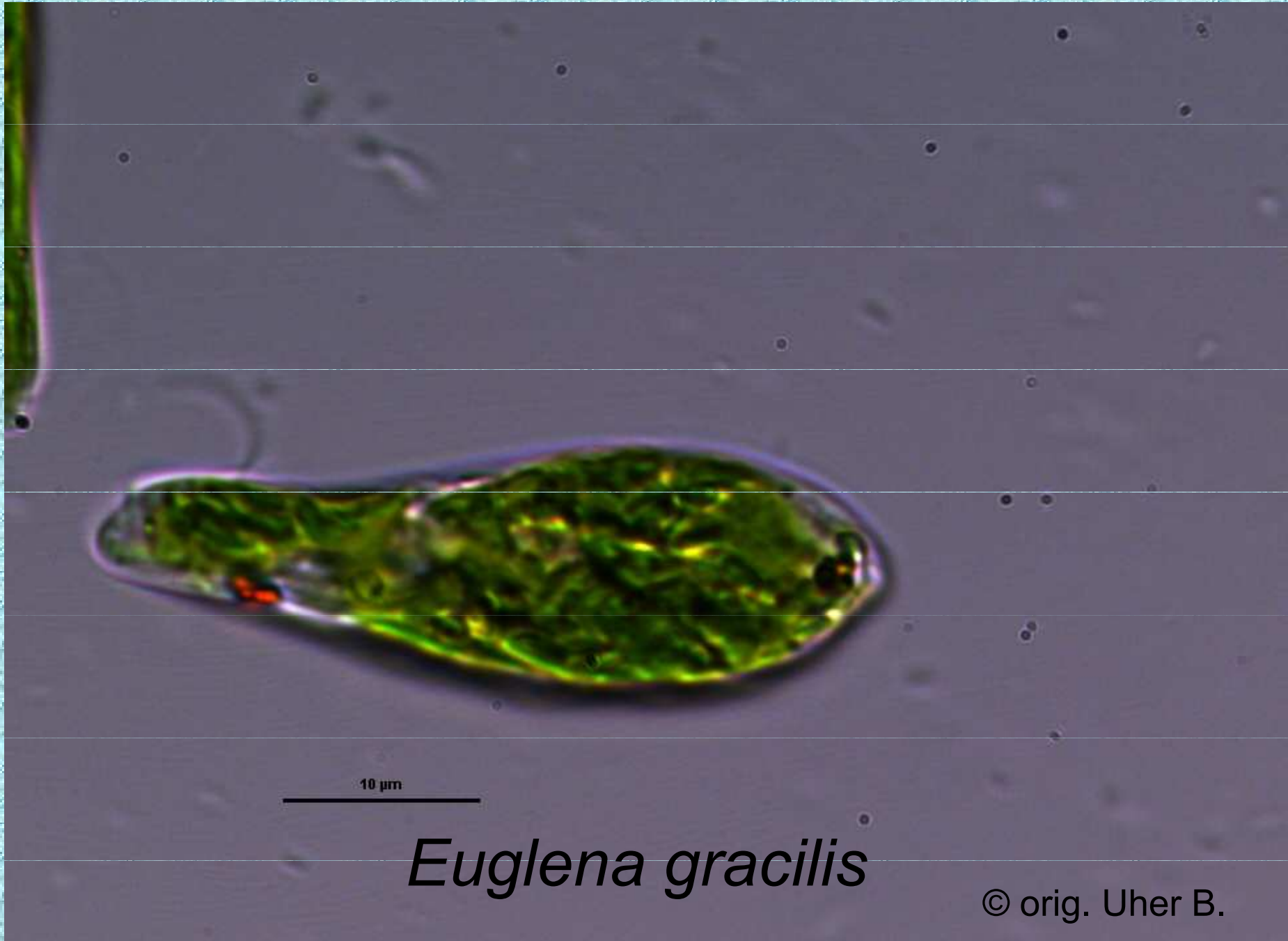
CVIČENÍ 02

PROTOZOA -

Euglenophyta, Dinophyta

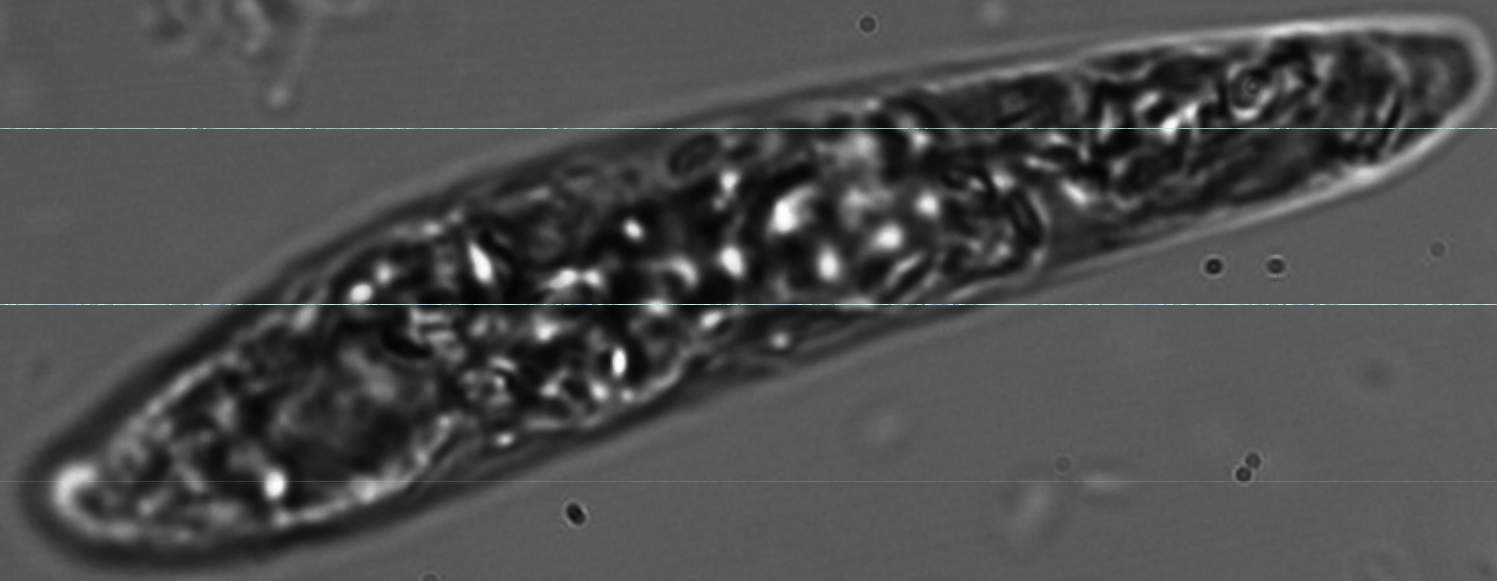
CHROMISTA - Cryptophyta

Odd.: Euglenophyta Třída: Euglenophyceae Řád: Euglenales



Euglena gracilis

© orig. Uher B.

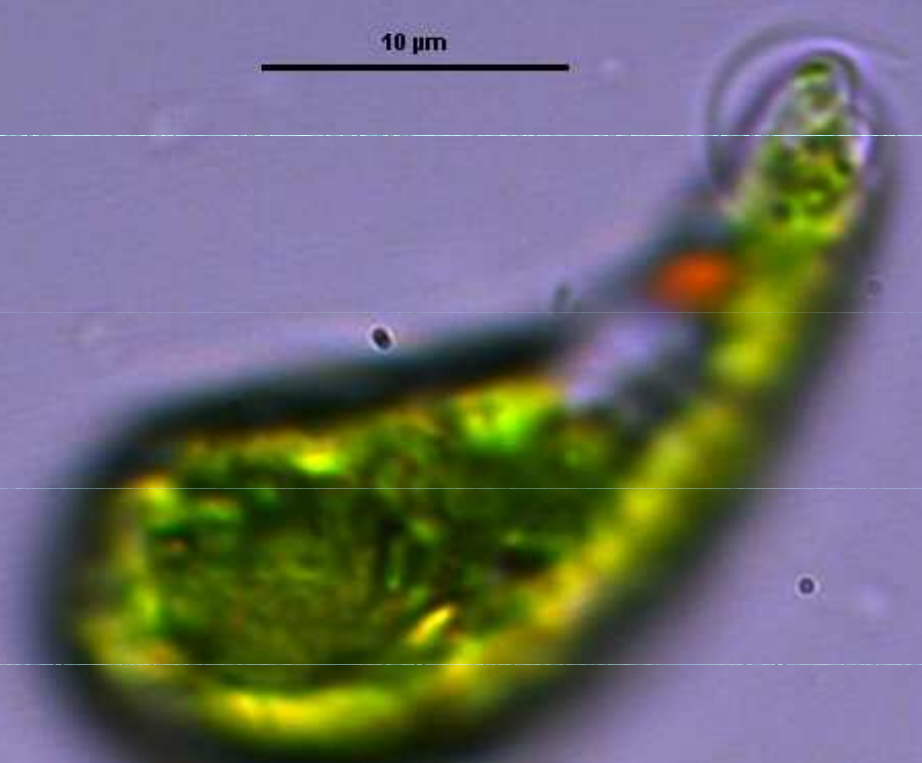


Euglena gracilis

© orig. Uher B.

Euglena gracilis

10 μm



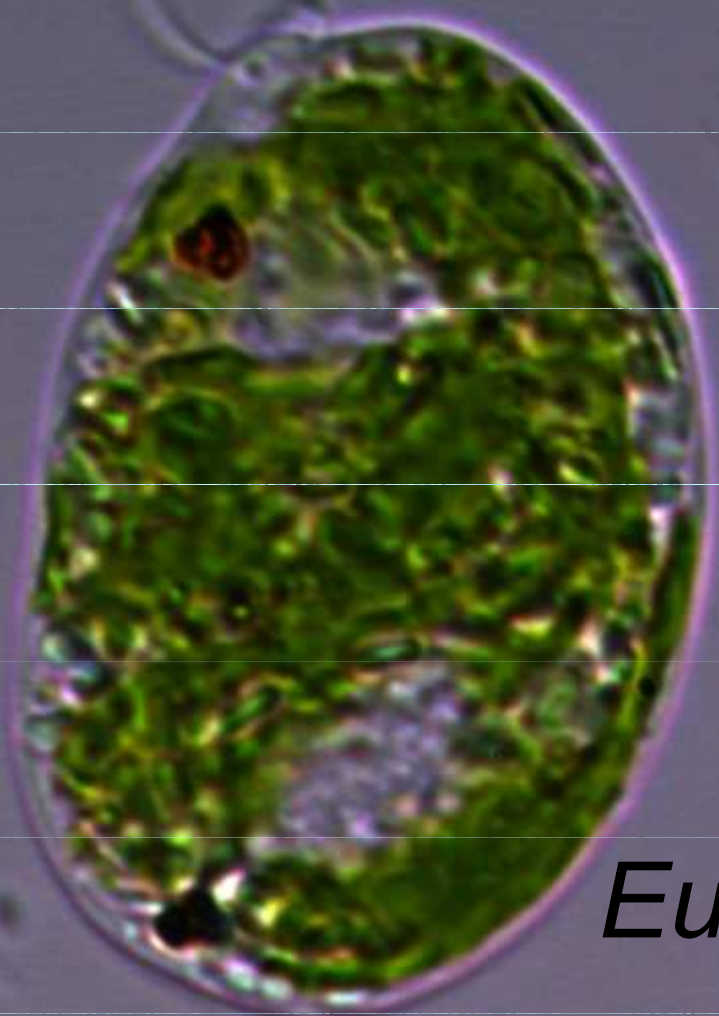
© orig. Uher B.

A light micrograph of a single Euglena gracilis cell. The cell is elongated and spindle-shaped, with a prominent, rounded, green chloroplast filling most of its interior. A thin, clear layer, the pellicle, is visible around the cell. At the anterior end, a small, dark, pointed structure, the flagellum, is visible. A horizontal scale bar is located to the left of the cell, with the text "10 μm" above it. The background is a uniform, light gray color.

10 μm

Euglena gracilis

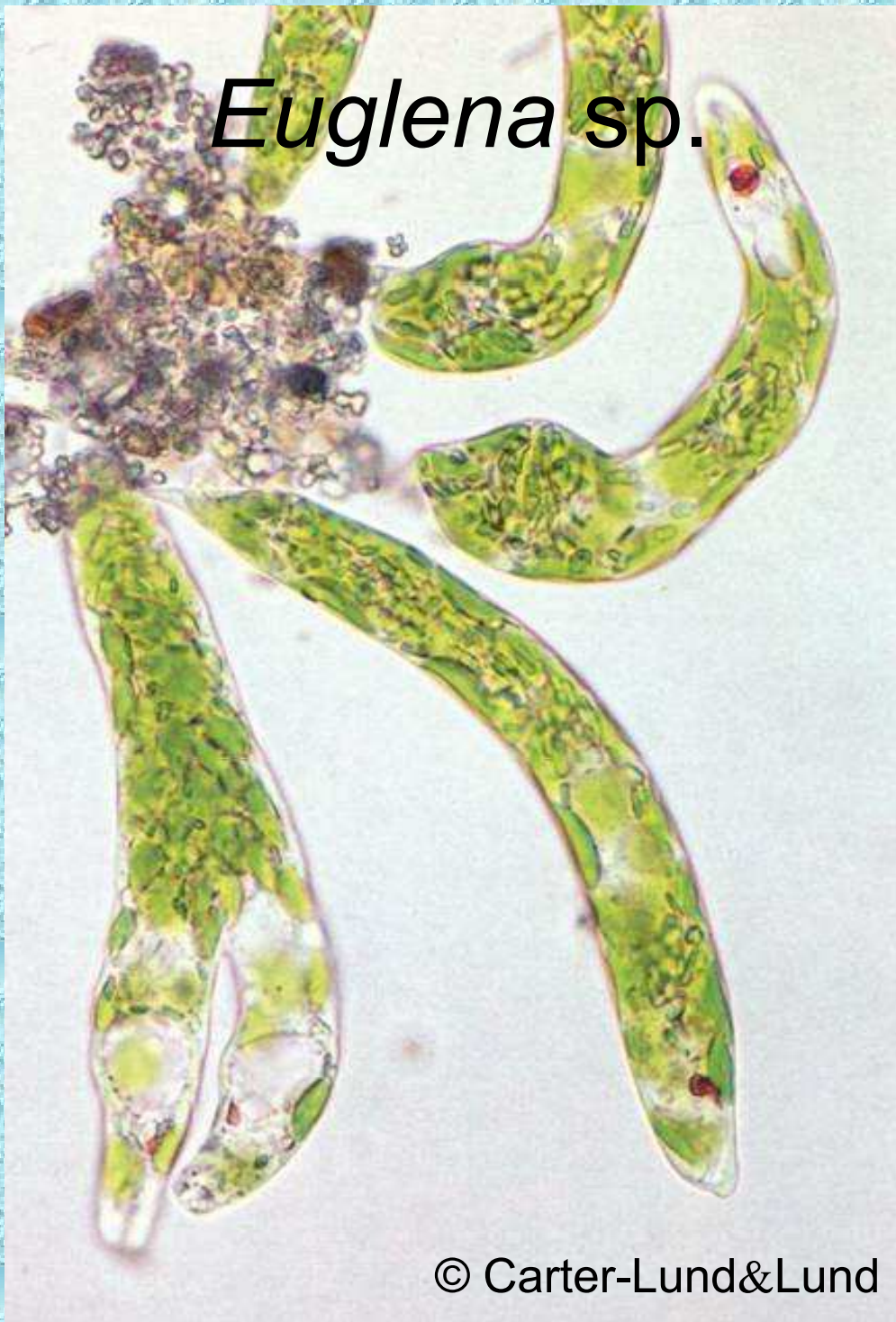
© orig. Uher B.



Euglena gracilis

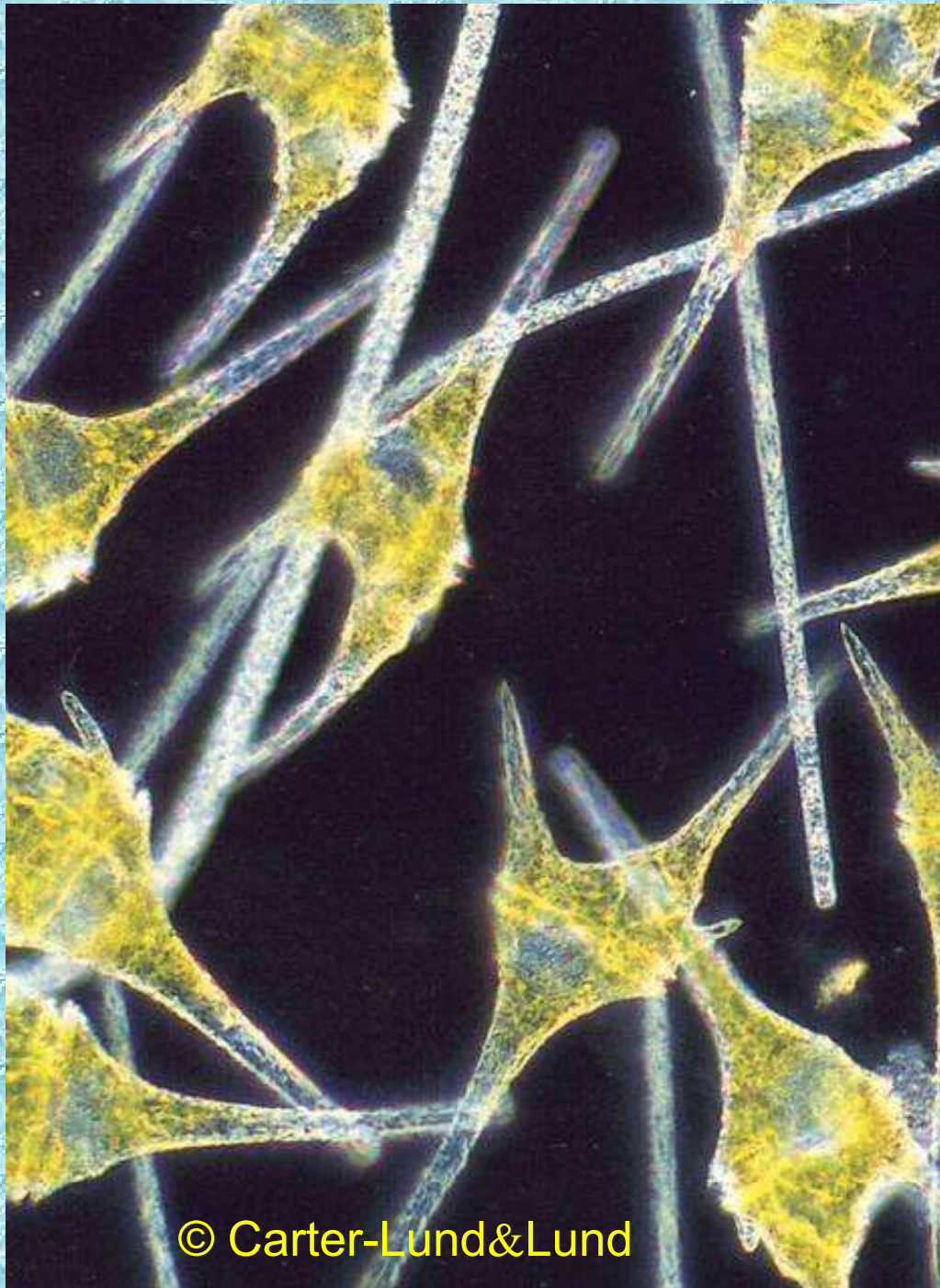
© orig. Uher B.

Euglena sp.



© Carter-Lund&Lund

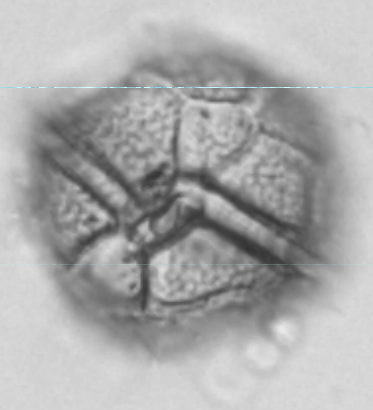
Odd.: Dinophyta Třída: Dinophyceae Řád: Peridinales



Ceratium sp.

© Carter-Lund&Lund

Odd.: Dinophyta Třída: Dinophyceae Řád: Peridinales



Peridinium sp.

Odd.: Cryptophyta Třída: Cryptophyceae Řád: Cryptomonadales

Cryptomonas sp.



© Carter-Lund&Lund