

Cvičení č. 1:

Preparáty pozorovány na mikroskopech Olympus

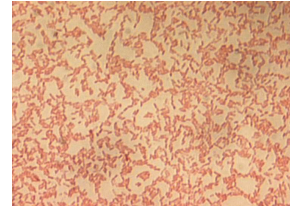
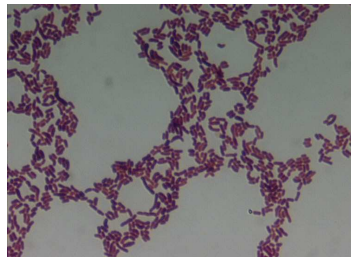
- zvětšení 1000x (100x objektivové + 10x okulárové)

Snímky pořízeny software analýzy obrazu LUCIA G/GF

Makroskopické snímky pořízeny RGB kamerou HITACHI, Nikon Coolpix 4500

1. BF - JASNÉ POLE

GRAMOVO BARVENÍ



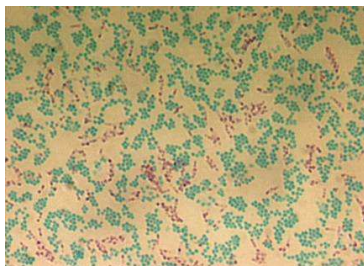
Bacillus thuringiensis

Arthrobacter crystallopoietes CCM 2386

Serratia marcescens CCM 303

Ziehl-Nielsonovo barvení

buňky modrozelené a růžové barvy



Mycobacterium phlei CCM 5639 a *Micrococcus luteus* CCM 169

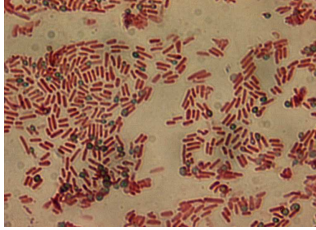
pouzdra barvena kongočervení



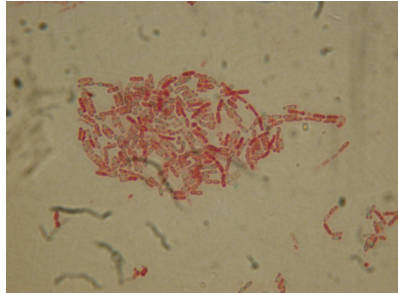
Azotobacter vinelandii CCM 289

Nativní preparát

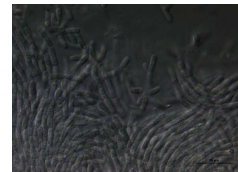
malachitovou zelení, zvětšení 100x



Bacillus sphaericus CCM 1615
Bacillus mycoides CCM 145

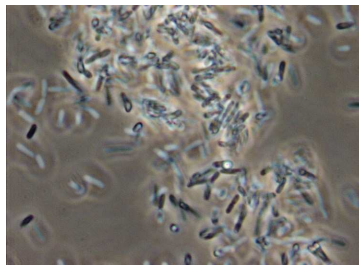


2. NOMARSKÉHO DIFERENCIÁLNÍ INTERFERENČNÍ KONTRAST



Sporosarcina ureae CCM 860
Bacillus megaterium CCM 2007
BACILLUS THURINGIENSIS
Bacillus cereus CCM 2010

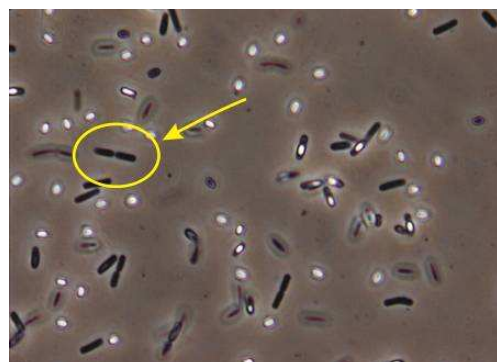
3. FÁZOVÝ KONTRAST

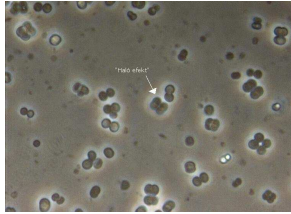


Bacillus cereus CCM 2010
Bacillus sphaericus CCM 1615



Bacillus megaterium CCM 2007
Bacillus subtilis CCM 2216

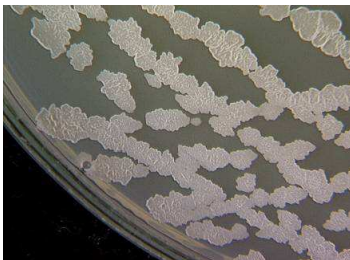




Sporosarcina ureae CCM 860

4. MAKROFOTOGRAFIE

Makroskopické snímání kolonií



Bacillus subtilis CCM 2216

Serratia marcescens

Streptomyces griseus

Acetobacter sp.



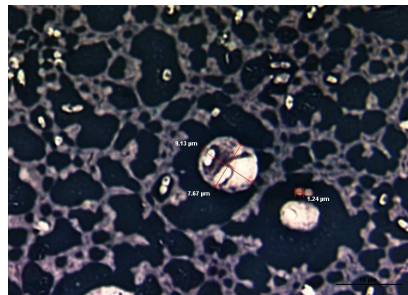
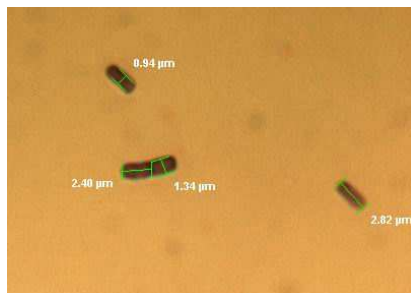
Sporosarcina ureae CCM 860

Nocardia carnea CCM 2756

5. ANALÝZA OBRAZU - LUCIA G/GF

- měření velikostí buněk

- vkládání měřítka



Bacillus cereus CCM 2010

Azotobacter vinelandii CCM 289

