

snímek 1

Molekulární fyziologie

snímek 2

Srážení krve

snímek 3

Srážení krve

- Homeostaza – malá poranění krevní destičky
- Krevní sraženina – velká poranění systém krevní srážlivosti

snímek 4

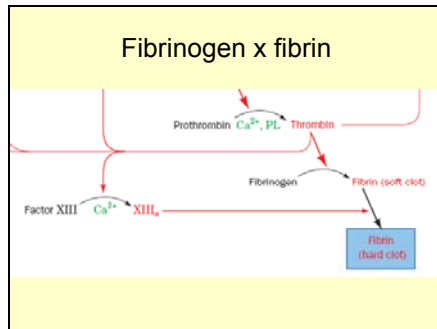
Systém krevní srážlivosti

Factor Number	Common Name	Molecular Mass (kD)
I	Fibrinogen	340
II	Prothrombin	66
III	Tissue factor or thromboplastin	30
IV	Ca ²⁺	
V*	Proaccelerin	249
VII	Proconvertin	46
VIII	Antihemophilic factor	265
IX	Christmas factor	47
X	Stuart factor	50
XI	Plasma thromboplastin antecedent (PTA)	136
XII	Hageman factor	67
XIII	Fibrin-stabilizing factor (FSF)	301
	Prekallikrein	69
	High molecular weight kininogen (HMK)	70

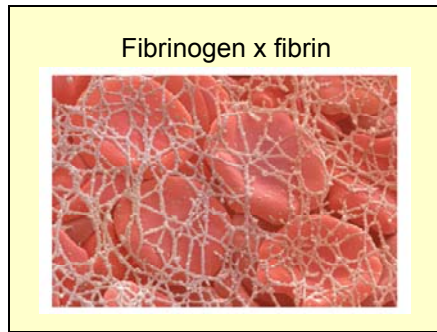
snímek 5



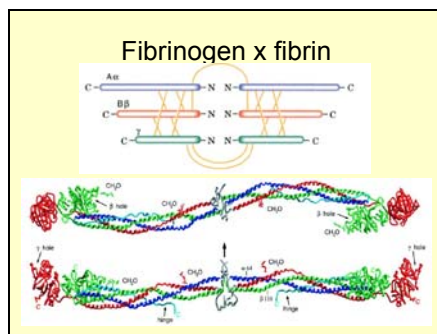
snímek 6



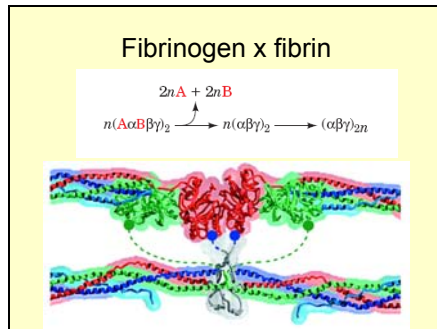
snímek 7



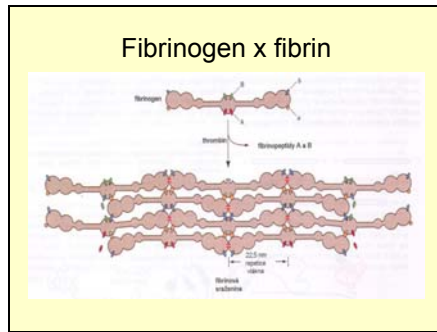
snímek 8



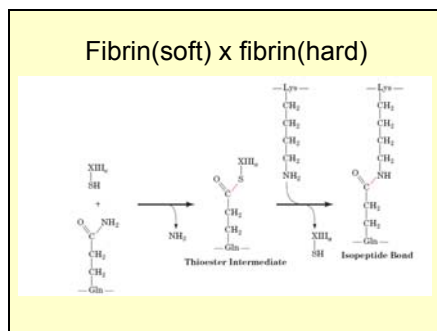
snímek 9



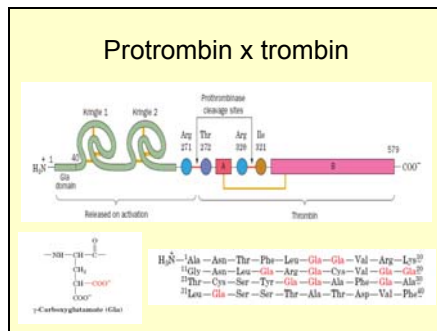
snímek 10



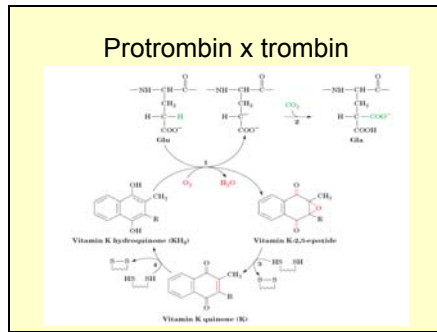
snímek 11



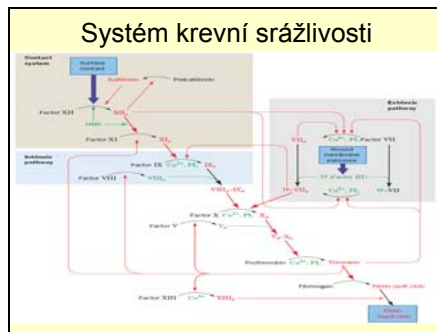
snímek 12



snímek 13



snímek 14



snímek 15

Svalová práce

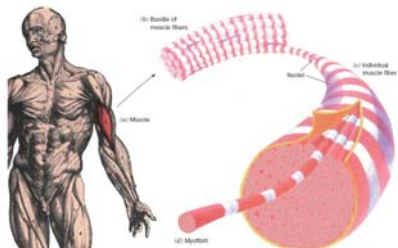
snímek 16

Svalová práce

- Příčně pruhované kosterní svalstvo
- Hladké srdeční svalstvo

snímek 17

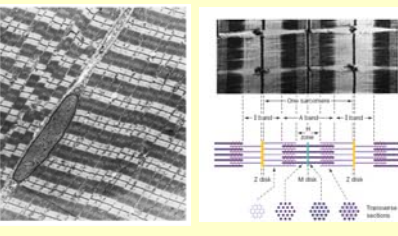
Příčně pruhovaný sval



The diagram illustrates the structure of a skeletal muscle. On the left, a human torso shows the location of the muscle. On the right, a detailed view shows a bundle of muscle fibers (myofibrils) within a muscle fiber, with labels for the sarcolemma, nucleus, and myofibril.

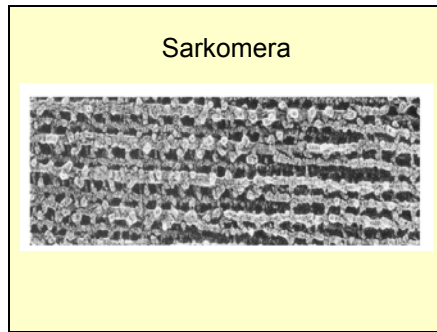
snímek 18

Sarkomera

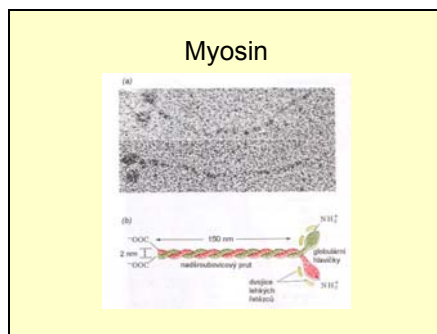


The image shows a microscopic view of a sarcomere on the left and a schematic diagram on the right. The diagram labels the Z-discs, actin filaments, myosin filaments, and the thick and thin filaments. It also indicates the length of the sarcomere as 2.0 μm.

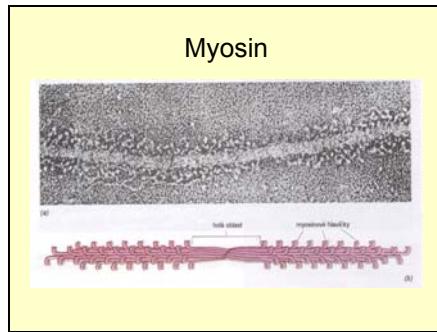
snímek 19



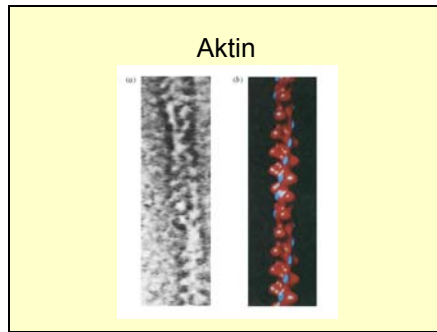
snímek 20



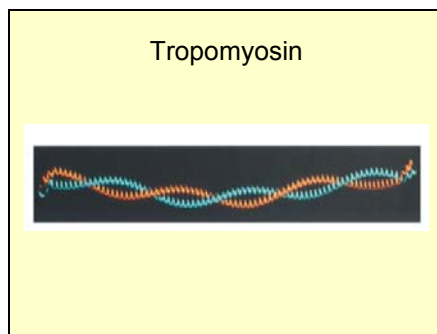
snímek 21



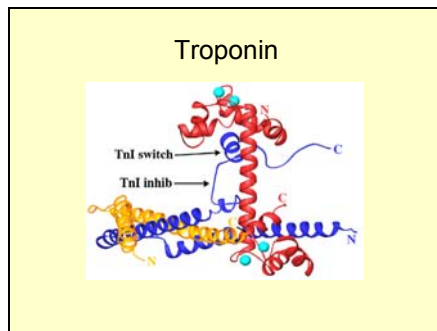
snímek 22



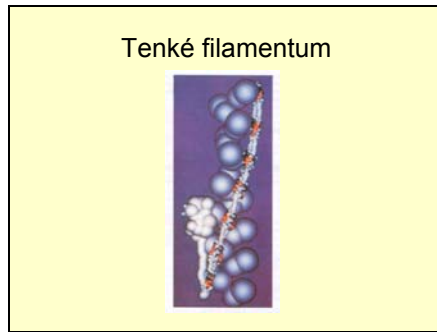
snímek 23



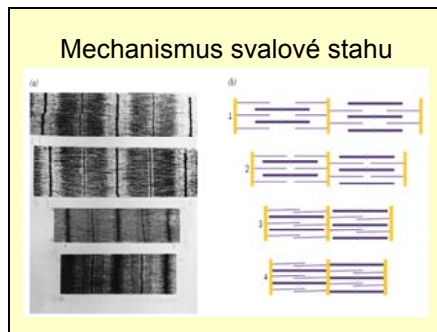
snímek 24



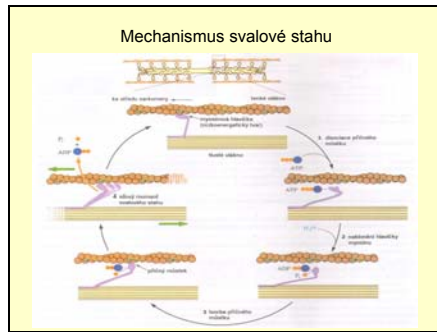
snímek 25



snímek 26



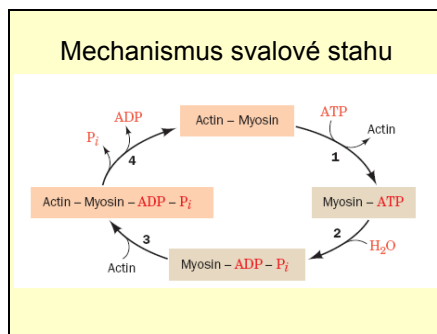
snímek 27



snímek 28



snímek 29



snímek 30

