

CVIČENÍ 02

PROTOZOA -

Euglenophyta, Dinophyta

CHROMISTA - Cryptophyta

Odd.: Euglenophyta Třída: Euglenophyceae Řád: Euglenales



Euglena gracilis

© orig. Uher B.

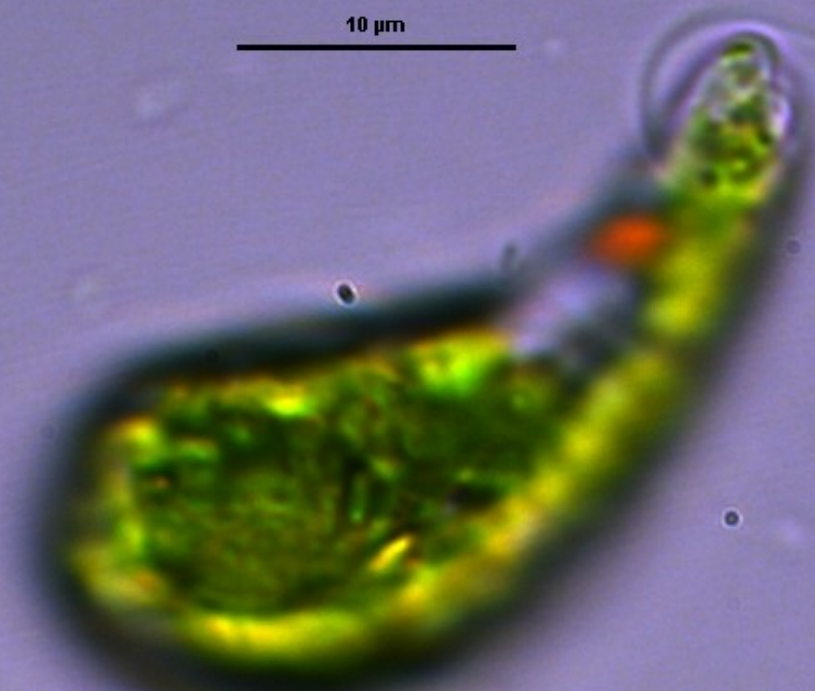


Euglena gracilis

© orig. Uher B.

Euglena gracilis

10 μm



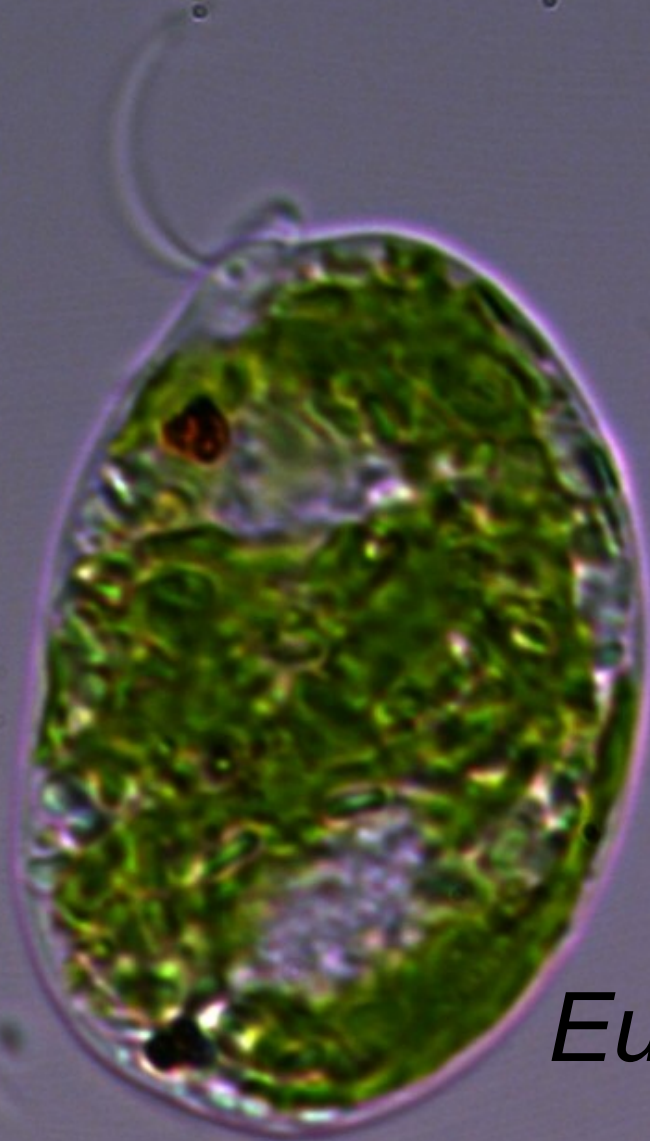
© orig. Uher B.

A light micrograph of a single Euglena gracilis cell. The cell is elongated and spindle-shaped, with a prominent, rounded, green chloroplast filling most of its interior. The chloroplast has a distinct internal structure, likely paramylon granules. The cell is surrounded by a thin, clear layer, possibly the pellicle. The background is a uniform, light gray color. A scale bar is located in the lower-left quadrant of the image, consisting of a horizontal line with the text "10 μm" above it. The text "Euglena gracilis" is written in a large, black, serif font at the bottom center. In the bottom right corner, there is a copyright notice: "© orig. Uher B.".

10 μm

Euglena gracilis

© orig. Uher B.



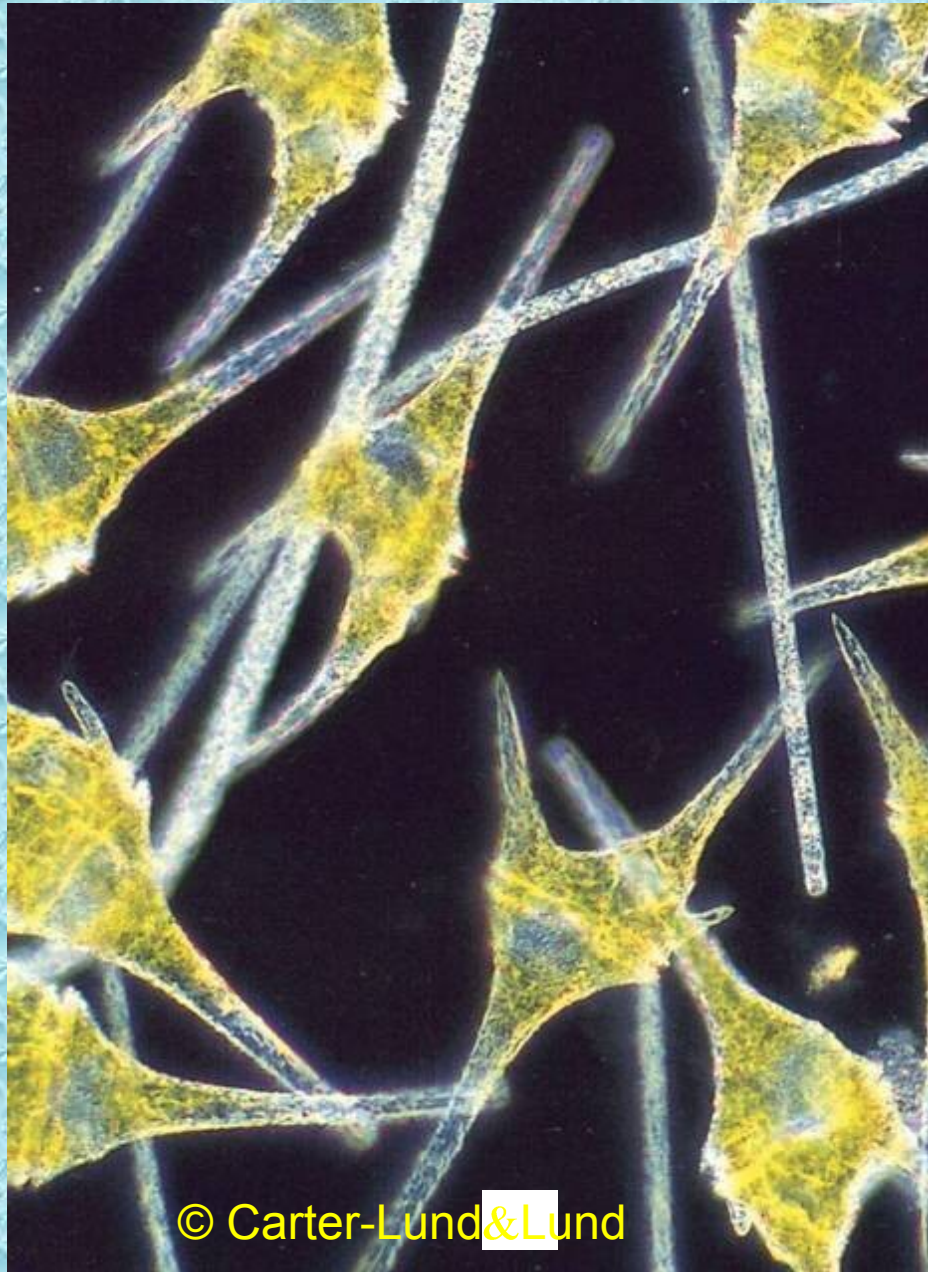
Euglena gracilis

Euglena sp.



© Carter-Lund&Lund

Odd.: Dinophyta Třída: Dinophyceae Řád: Peridinales



Ceratium sp.

© Carter-Lund & Lund

Odd.: Dinophyta Třída: Dinophyceae Řád: Peridinales



Peridinium sp.

Odd.: Cryptophyta Třída: Cryptophyceae Řád: Cryptomonadales

Cryptomonas sp.



© Carter-Lund&Lund