

model Cze-EMSC

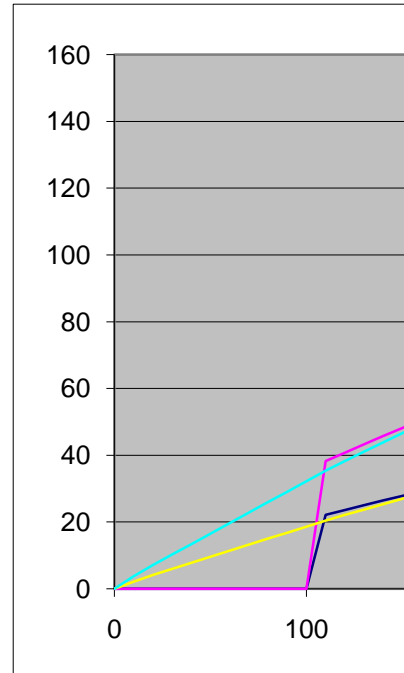
thickness	vp	vs	i-krit.P	i-krit.S	x-p	x-s	N3 sin-p
2.00	4.70	2.72					0.671429
13.00	5.50	3.18	58.70955	58.79797	3.290658	3.302129	0.785714
19.00	6.20	3.58	62.51067	62.65642	24.98412	25.14011	0.885714
500.00	7.00	4.05	62.33955	62.12266	36.25044	35.9191	

D	Pn	Sn	Pg	Sg	P1	P2	P3	S1	
0				0.00	0.00	0.00	1000	1000	0.00
10				2.13	3.68	2.13	2.260204	1000	3.68
20				4.08	7.05	4.26	4.078386	1000	7.35
30				5.90	10.20	6.38	5.896568	1000	11.03
40				7.71	13.34	8.51	7.71475	1000	14.71
50				9.53	16.49	10.64	9.532932	1000	18.38
60				11.35	19.63	12.77	11.35111	12.4145	22.06
70				13.17	22.77	14.89	13.1693	14.0274	25.74
80				14.99	25.92	17.02	14.98748	15.6403	29.41
90				16.81	29.06	19.15	16.80566	17.25321	33.09
100				18.62	32.21	21.28	18.62384	18.86611	36.76
110	22.11451	38.27635		20.44	35.35	23.40	20.44202	20.47901	40.44
120	23.54308	40.74549		22.09	38.23	25.53	22.2602	22.09192	44.12
130	24.97165	43.21462		23.70	41.02	27.66	24.07839	23.70482	47.79
140	26.40022	45.68376		25.32	43.82	29.79	25.89657	25.31772	51.47
150	27.8288	48.15289		26.93	46.61	31.91	27.71475	26.93063	55.15
160	29.25737	50.62203		28.54	49.40	34.04	29.53293	28.54353	58.82
170	30.68594	53.09116		30.16	52.20	36.17	31.35111	30.15643	62.50
180	32.11451	55.5603		31.77	54.99	38.30	33.1693	31.76934	66.18
190	33.54308	58.02944		33.38	57.78	40.43	34.98748	33.38224	69.85
200	34.97165	60.49857		35.00	60.58	42.55	36.80566	34.99514	73.53
210	36.40022	62.96771		36.61	63.37	44.68	38.62384	36.60805	77.21
220	37.8288	65.43684		38.22	66.16	46.81	40.44202	38.22095	80.88
230	39.25737	67.90598		39.83	68.96	48.94	42.2602	39.83385	84.56
240	40.68594	70.37511		41.45	71.75	51.06	44.07839	41.44675	88.24
250	42.11451	72.84425		43.06	74.54	53.19	45.89657	43.05966	91.91
260	43.54308	75.31339		44.67	77.34	55.32	47.71475	44.67256	95.59
270	44.97165	77.78252		46.29	80.13	57.45	49.53293	46.28546	99.26
280	46.40022	80.25166		47.90	82.92	59.57	51.35111	47.89837	102.94
290	47.8288	82.72079		49.51	85.72	61.70	53.1693	49.51127	106.62
300	49.25737	85.18993		51.12	88.51	63.83	54.98748	51.12417	110.29
310	50.68594	87.65907		52.74	91.30	65.96	56.80566	52.73708	113.97
320	52.11451	90.1282		54.35	94.10	68.09	58.62384	54.34998	117.65
330	53.54308	92.59734		55.96	96.89	70.21	60.44202	55.96288	121.32
340	54.97165	95.06647		57.58	99.68	72.34	62.2602	57.57579	125.00
350	56.40022	97.53561		59.19	102.48	74.47	64.07839	59.18869	128.68
360	57.8288	100.0047		60.80	105.27	76.60	65.89657	60.80159	132.35
370	59.25737	102.4739		62.41	108.06	78.72	67.71475	62.4145	136.03
380	60.68594	104.943		64.03	110.86	80.85	69.53293	64.0274	139.71
390	62.11451	107.4122		65.64	113.65	82.98	71.35111	65.6403	143.38
400	63.54308	109.8813		67.25	116.44	85.11	73.1693	67.25321	147.06
410	64.97165	112.3504		68.87	119.24	87.23	74.98748	68.86611	150.74
420	66.40022	114.8196		70.48	122.03	89.36	76.80566	70.47901	154.41
430	67.8288	117.2887		72.09	124.82	91.49	78.62384	72.09192	158.09
440	69.25737	119.7578		73.70	127.62	93.62	80.44202	73.70482	161.76
450	70.68594	122.227		75.32	130.41	95.74	82.2602	75.31772	165.44
460	72.11451	124.6961		76.93	133.20	97.87	84.07839	76.93063	169.12

470	73.54308	127.1652	78.54	136.00	100.00	85.89657	78.54353	172.79
480	74.97165	129.6344	80.16	138.79	102.13	87.71475	80.15643	176.47
490	76.40022	132.1035	81.77	141.58	104.26	89.53293	81.76934	180.15
500	77.8288	134.5726	83.38	144.38	106.38	91.35111	83.38224	183.82

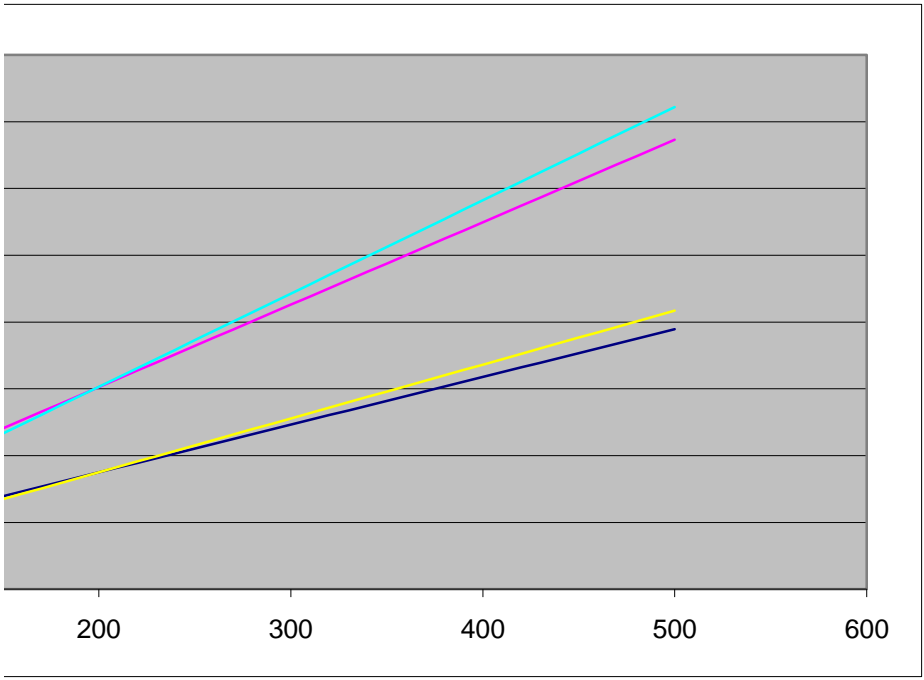
			N3				N2		
p	x-p	d-p	sin-s	s	x-s	d-s	sin-p	p	
42.17742	1.812053	2.698803	0.67160494	42.19106	1.81292	2.699385	0.758065	49.29387	
51.78679	16.51222	21.01555	0.78518519	51.73781	16.48321	20.99276	0.887097	62.51067	
62.33955	36.25044	40.92792	0.88395062	62.12266	35.9191	40.63473			
	54.57472	64.64227			54.21523	64.32688			

S2	S3	GG	Pn-Sg	Pg-Sg
1000	1000		0	0.00
3.906503	1000	12.39049		1.55
7.051157	1000	23.78217		2.97
10.19581	1000	34.39395		4.30
13.34047	1000	45.00572		5.63
16.48512	1000	55.6175		6.95
19.62977	21.47142	66.22928		8.28
22.77443	24.26472	76.84106		9.61
25.91908	27.05801	87.45284		10.93
29.06374	29.85131	98.06461		12.26
32.20839	32.6446	108.6764		13.58
35.35304	35.4379	119.2882	13.24	14.91
38.4977	38.2312	129.1142	14.69	16.14
41.64235	41.02449	138.5574	16.05	17.32
44.78701	43.81779	148.0005	17.42	18.50
47.93166	46.61108	157.4437	18.78	19.68
51.07631	49.40438	166.8868	20.15	20.86
54.22097	52.19768	176.33	21.51	22.04
57.36562	54.99097	185.7731	22.88	23.22
60.51028	57.78427	195.2162	24.24	24.40
63.65493	60.57756	204.6594	25.61	25.58
66.79958	63.37086	214.1025	26.97	26.76
69.94424	66.16416	223.5457	28.34	27.94
73.08889	68.95745	232.9888	29.70	29.12
76.23355	71.75075	242.432	31.06	30.30
79.3782	74.54405	251.8751	32.43	31.48
82.52286	77.33734	261.3182	33.79	32.66
85.66751	80.13064	270.7614	35.16	33.85
88.81216	82.92393	280.2045	36.52	35.03
91.95682	85.71723	289.6477	37.89	36.21
95.10147	88.51053	299.0908	39.25	37.39
98.24613	91.30382	308.534	40.62	38.57
101.3908	94.09712	317.9771	41.98	39.75
104.5354	96.89041	327.4202	43.35	40.93
107.6801	99.68371	336.8634	44.71	42.11
110.8247	102.477	346.3065	46.08	43.29
113.9694	105.2703	355.7497	47.44	44.47
117.1141	108.0636	365.1928	48.81	45.65
120.2587	110.8569	374.636	50.17	46.83
123.4034	113.6502	384.0791	51.54	48.01
126.548	116.4435	393.5222	52.90	49.19
129.6927	119.2368	402.9654	54.27	50.37
132.8373	122.0301	412.4085	55.63	51.55
135.982	124.8234	421.8517	56.99	52.73
139.1266	127.6167	431.2948	58.36	53.91
142.2713	130.41	440.738	59.72	55.09
145.4159	133.2033	450.1811	61.09	56.27



148.5606	135.9966	459.6242	62.45	57.45
151.7052	138.7899	469.0674	63.82	58.63
154.8499	141.5832	478.5105	65.18	59.81
157.9946	144.3764	487.9537	66.55	60.99

x-p	d-p	sin-s	s	x-s	d-s
2.324711	3.06664	0.759777	49.4445	2.337111	3.076051
24.98412	28.16392	0.888268	62.65642	25.14011	28.30239



model							
mocnost	P	S	i-p	i-s	x-p	x-s	
	30	5.50	3.18	51.78679	51.73781	38.10512	38.03817
	500	7	4.05				

hloubka 0

D	Pg	Pn	Sg	Sn	GG	Pn-Sg	Pg-Sg
	0	0		0		0	0
10	1.818182		3.144654		10.61178		1.326472
20	3.636364		6.289308		21.22356		2.652945
30	5.454545		9.433962		31.83533		3.979417
40	7.272727		12.57862		42.44711		5.305889
50	9.090909		15.72327		53.05889		6.632361
60	10.90909		18.86792		63.67067		7.958834
70	12.72727		22.01258		74.28245		9.285306
80	14.54545	18.17682	25.15723	31.43726	84.89423	6.98	10.61178
90	16.36364	19.60539	28.30189	33.90639	95.506	8.70	11.93825
100	18.18182	21.03396	31.44654	36.37553	106.1178	10.41	13.26472
110		22.46254	34.59119	38.84466	116.7296	12.13	14.59119
120	21.81818	23.89111	37.73585	41.3138	127.3413	13.84	15.91767
130	23.63636	25.31968	40.8805	43.78294	137.9531	15.56	17.24414
140	25.45455	26.74825	44.02516	46.25207	148.5649	17.28	18.57061
150	27.27273	28.17682	47.16981	48.72121	159.1767	18.99	19.89708
160	29.09091	29.60539	50.31447	51.19034	169.7885	20.71	21.22356
170	30.90909	31.03396	53.45912	53.65948	180.4002	22.43	22.55003
180	32.72727	32.46254	56.60377	56.12861	191.012	24.14	23.8765
190	34.54545	33.89111	59.74843	58.59775	201.6238	25.86	25.20297
200	36.36364	35.31968	62.89308	61.06689	212.2356	27.57	26.52945
210	38.18182	36.74825	66.03774	63.53602	222.8473	29.29	27.85592
220		40	69.18239	66.00516	233.4591	31.01	29.18239
230	41.81818	39.60539	72.32704	68.47429	244.0709	32.72	30.50886
240	43.63636	41.03396	75.4717	70.94343	254.6827	34.44	31.83533
250	45.45455	42.46254	78.61635	73.41257	265.2945	36.15	33.16181
260	47.27273	43.89111	81.76101	75.8817	275.9062	37.87	34.48828
270	49.09091	45.31968	84.90566	78.35084	286.518	39.59	35.81475
280	50.90909	46.74825	88.05031	80.81997	297.1298	41.30	37.14122
290	52.72727	48.17682	91.19497	83.28911	307.7416	43.02	38.4677
300	54.54545	49.60539	94.33962	85.75824	318.3533	44.73	39.79417
310	56.36364	51.03396	97.48428	88.22738	328.9651	46.45	41.12064
320	58.18182	52.46254	100.6289	90.69652	339.5769	48.17	42.44711
330		60	103.7736	93.16565	350.1887	49.88	43.77358
340	61.81818	55.31968	106.9182	95.63479	360.8005	51.60	45.10006
350	63.63636	56.74825	110.0629	98.10392	371.4122	53.31	46.42653
360	65.45455	58.17682	113.2075	100.5731	382.024	55.03	47.753
370	67.27273	59.60539	116.3522	103.0422	392.6358	56.75	49.07947
380	69.09091	61.03396	119.4969	105.5113	403.2476	58.46	50.40595
390	70.90909	62.46254	122.6415	107.9805	413.8593	60.18	51.73242
400	72.72727	63.89111	125.7862	110.4496	424.4711	61.90	53.05889
410	74.54545	65.31968	128.9308	112.9187	435.0829	63.61	54.38536
420	76.36364	66.74825	132.0755	115.3879	445.6947	65.33	55.71184
430	78.18182	68.17682	135.2201	117.857	456.3065	67.04	57.03831
440		80	138.3648	120.3261	466.9182	68.76	58.36478
450	81.81818	71.03396	141.5094	122.7953	477.53	70.48	59.69125
460	83.63636	72.46254	144.6541	125.2644	488.1418	72.19	61.01772
470	85.45455	73.89111	147.7987	127.7336	498.7536	73.91	62.3442

480	87.27273	75.31968	150.9434	130.2027	509.3654	75.62	63.67067
490	89.09091	76.74825	154.0881	132.6718	519.9771	77.34	64.99714
500	90.90909	78.17682	157.2327	135.141	530.5889	79.06	66.32361

