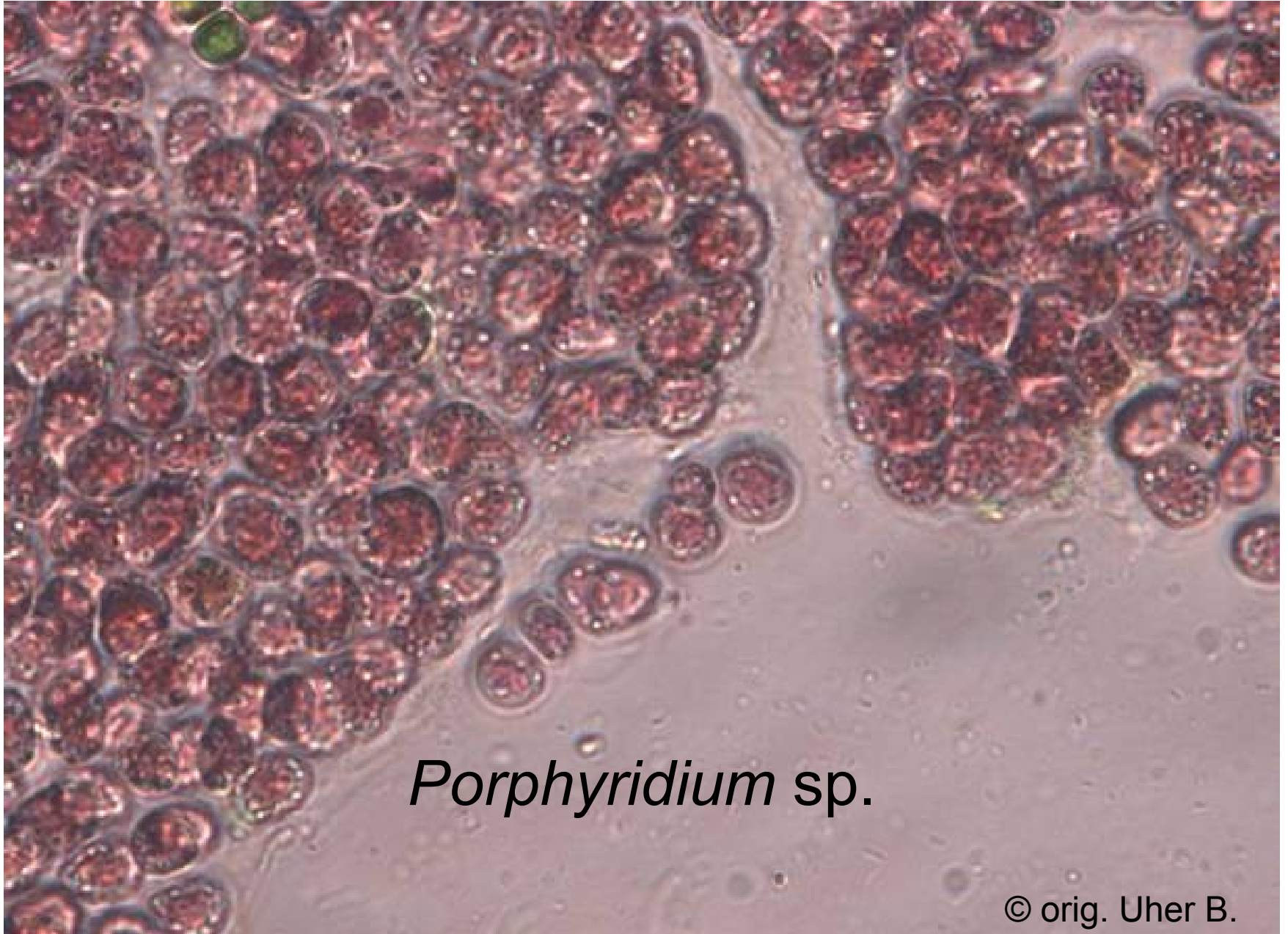


Odd.: Rhodophyta Třída: Bangiophyceae Řád: Bangiales



*Porphyridium* sp.

A microscopic image showing numerous cells of Porphyridium sp. The cells are oval-shaped with a distinct, dark, multi-layered outer wall. The interior of each cell is filled with a dense, reddish-brown granular material, likely representing the photosynthetic apparatus or storage products. The cells are arranged in a somewhat irregular, overlapping pattern. The background is a light, yellowish-tan color.

*Porphyridium* sp.