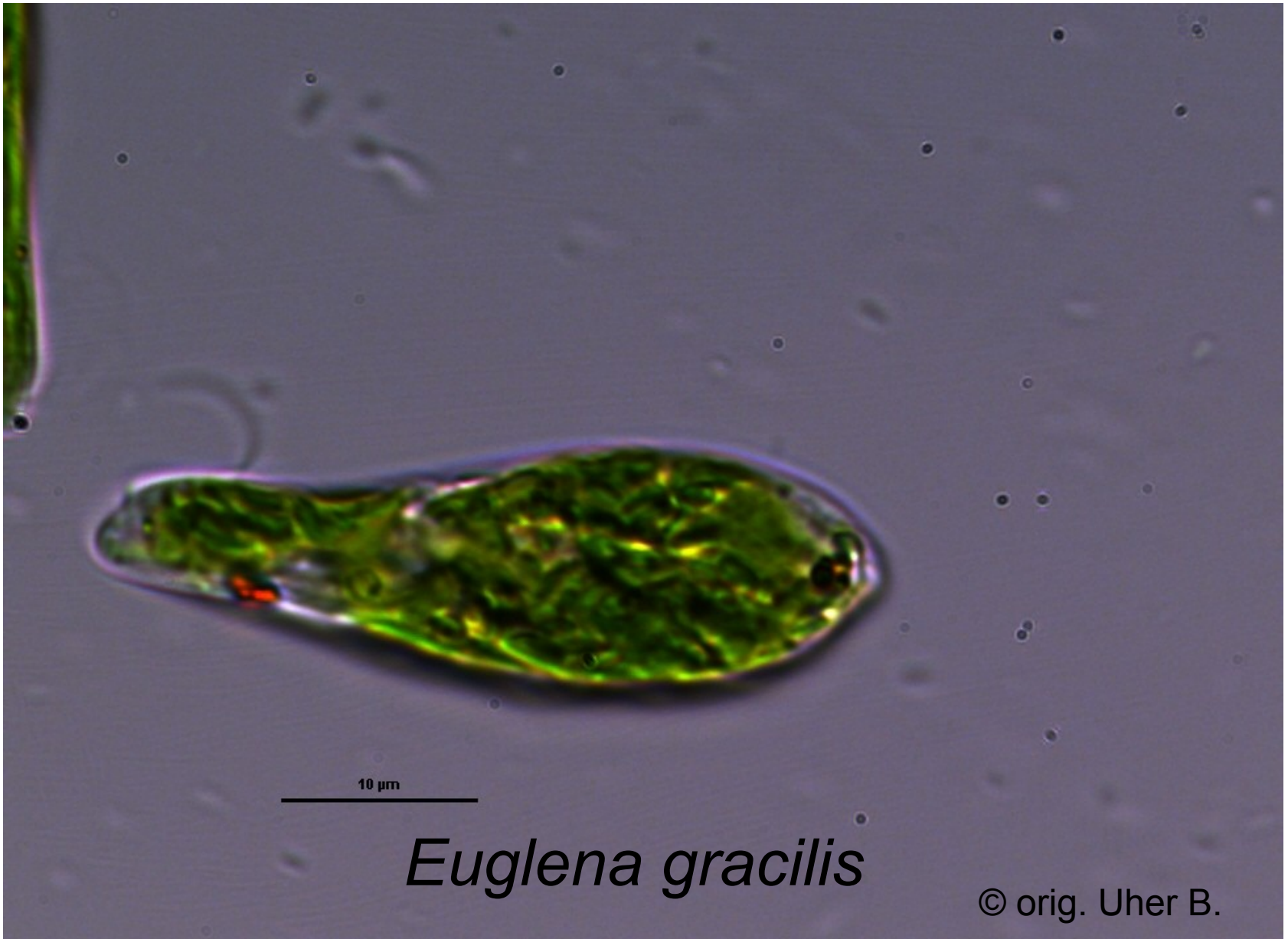
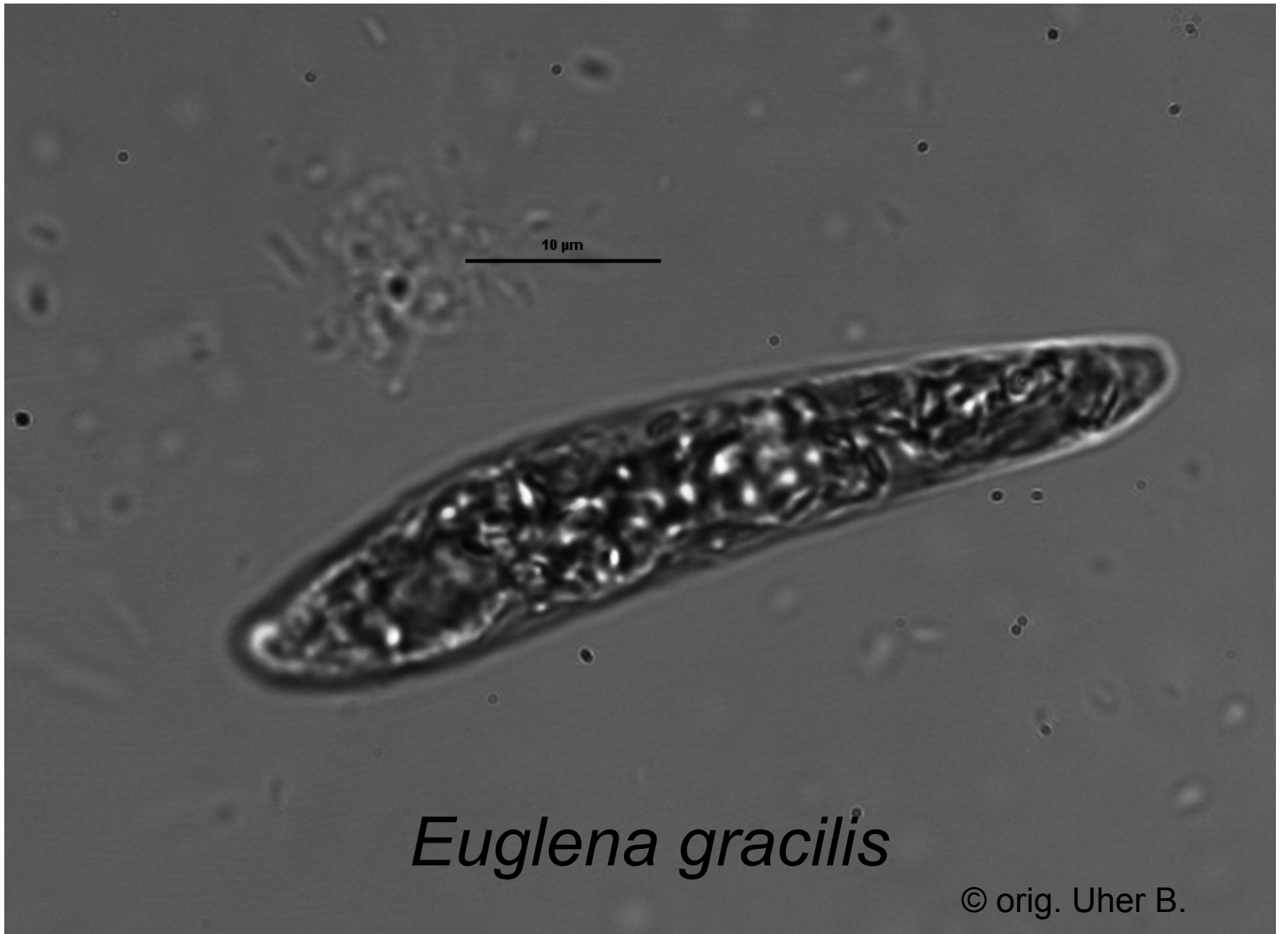


Odd.: Euglenophyta Třída: Euglenophyceae Řád: Euglenales





Euglena gracilis

© orig. Uher B.

Euglena gracilis

10 μm



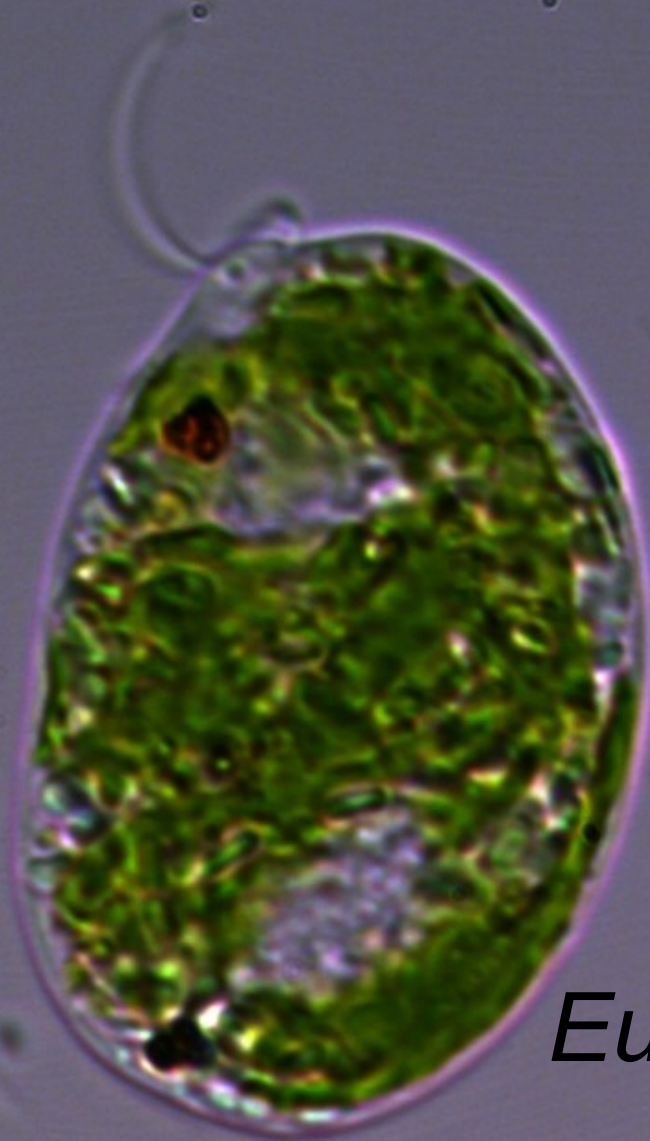
© orig. Uher B.

A light micrograph of a single Euglena gracilis cell. The cell is elongated and spindle-shaped, with a prominent, rounded anterior end and a narrower posterior end. It is filled with a dense, green, granular substance, likely chloroplasts. A thin, clear layer, the pellicle, is visible around the cell. A horizontal scale bar is located to the left of the cell, with the text "10 μm" above it. The background is a uniform, light gray color with some faint, out-of-focus particles.

10 μm

Euglena gracilis

© orig. Uher B.



Euglena gracilis

Euglena sp.



© Carter-Lund&Lund