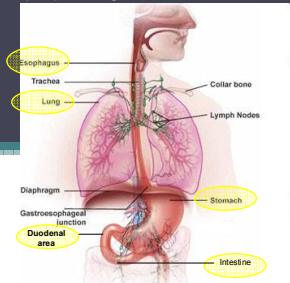


Gastrointestinální trakt a jeho deriváty

podpořeno grantem FRVŠ 524/2011

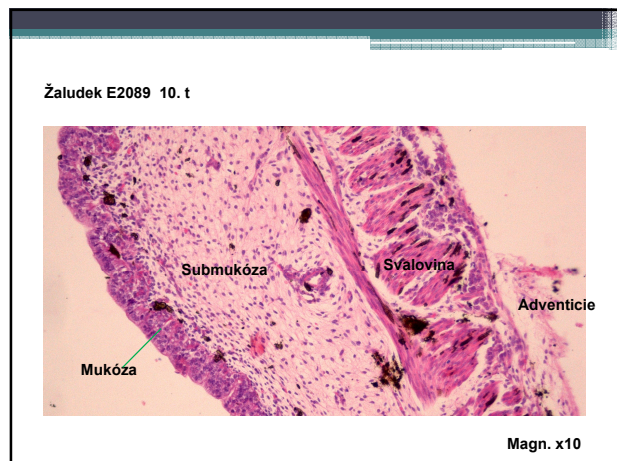
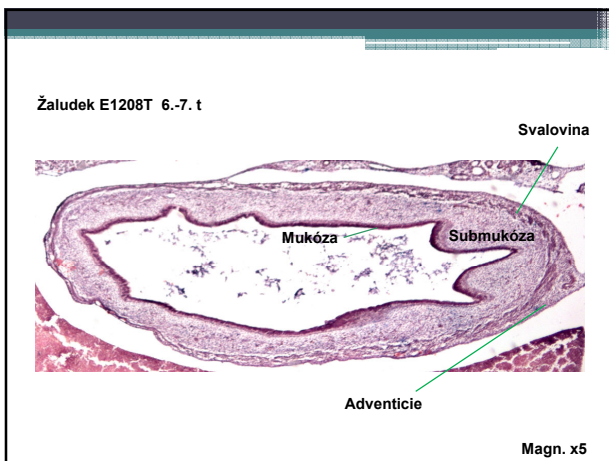
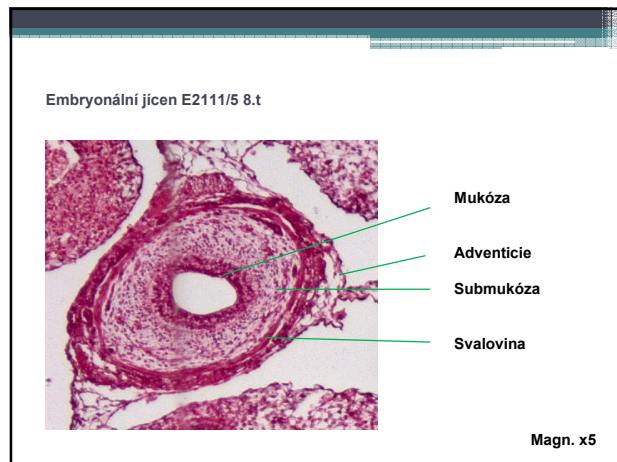
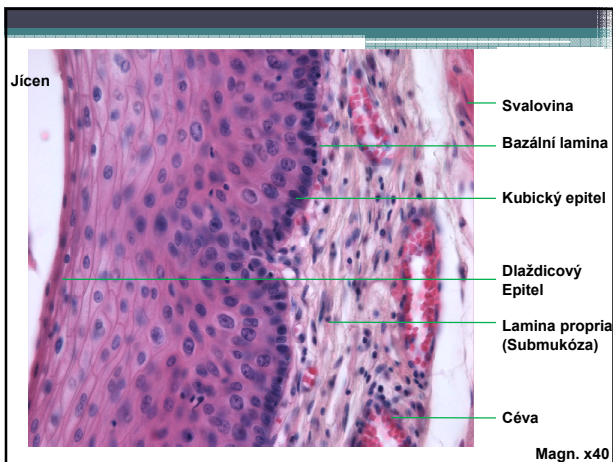


Přehled mikroskopických preparátů

<http://ecologyhealthcenter.net/node/16>

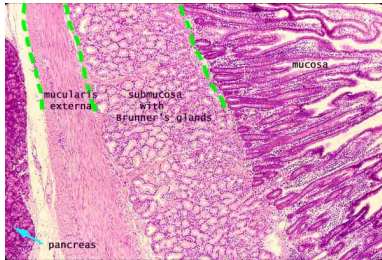
Použitá histologická barvení

- **Hematoxylin** (jádra) – **eosin** (cytoplazma)
- **PAS** (periodic acid Schiff) – **kyselé polysacharidy** (mucus)
- Alcian Blue – **neutrální polysacharidy**
- Azan – **kolagen, mucus; krvinky, cytoplazma**
- Trichrom goldner – **jádro, cytoplazma, ERY, svalovina, kolagen**
- Gomori – **retikulární vazivo**



Duodenum – Brunnerovy žlázy

Submukozální žlázy v duodenu nad hepatopankreatickým vyústěním
Sekrece mucinózního produktu obsahujícího bikarbonát

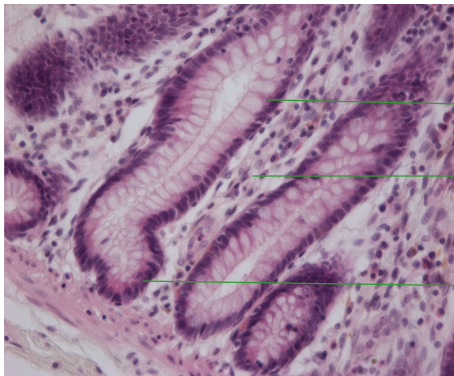


<http://www.siamed.edu/~dking2/erg/GI118b.htm>

Jejunum



L. krypty

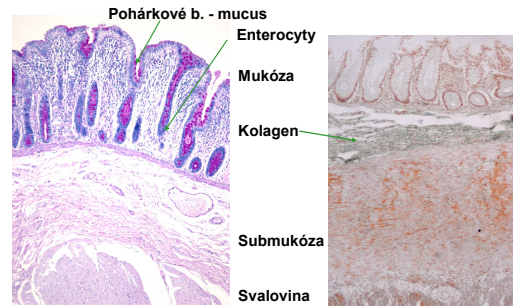


Magn. x40

Tlusté střevo

PAS + alcian blue

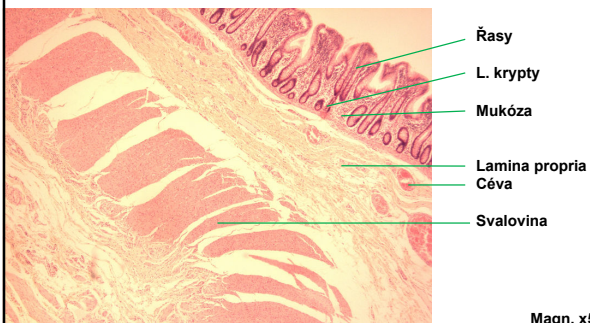
Trichrom Goldner



Magn. x10

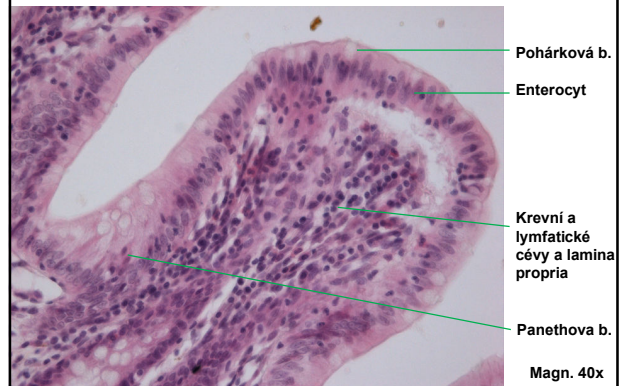
Magn. x5

Tlusté střevo



Magn. x5

Tlusté střevo



Magn. 40x

