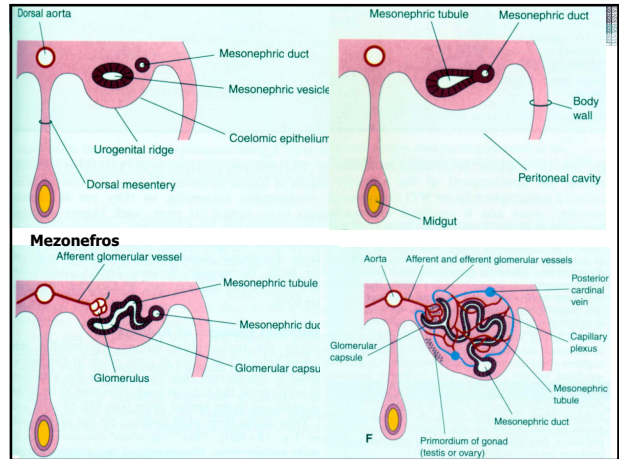
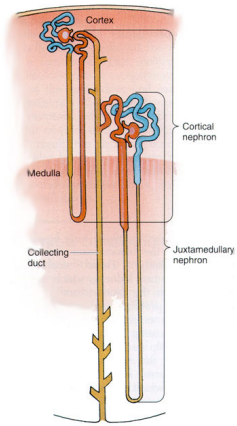


# Ledviny

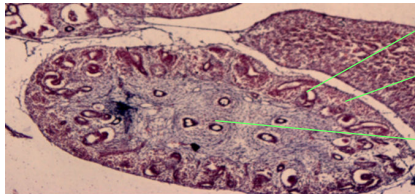
NEFRON – funkční jednotka

**Kůra - renální tělísko** (glomerulus + Bowmanův váček)  
 - proximální tubulus (zpětné vstřebávání)  
 - distální tubulus

**Dřeň - Henleova klíčka**  
 - sběrací kanálek



Metanefros E 1208T 7. t.

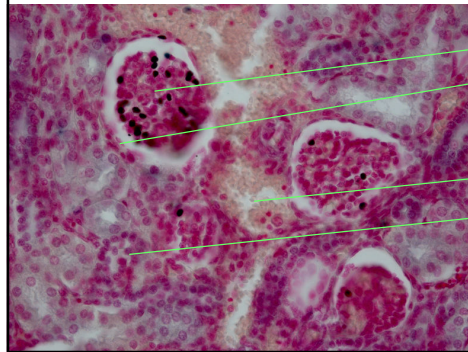


Neokortex s glomeruly  
 Metanefrogenní blastém  
 dřeň s kanálky

Magn. x10

Embryo metanefros kortex 21. t.

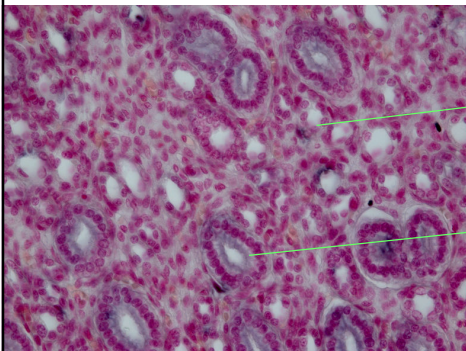
BCL-XL (antiapoptotický protein)



Glomerulus  
 Bowmanův váček  
 Céva  
 Proximální a distální tubuly

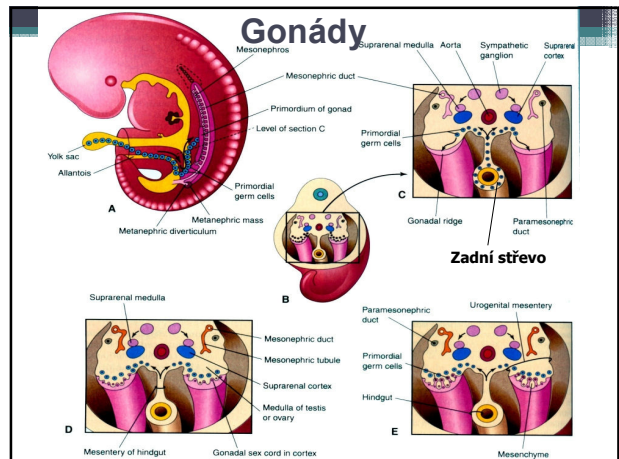
Magn. x40

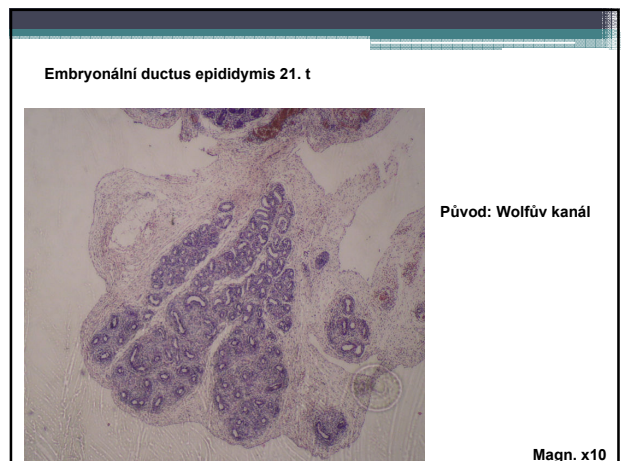
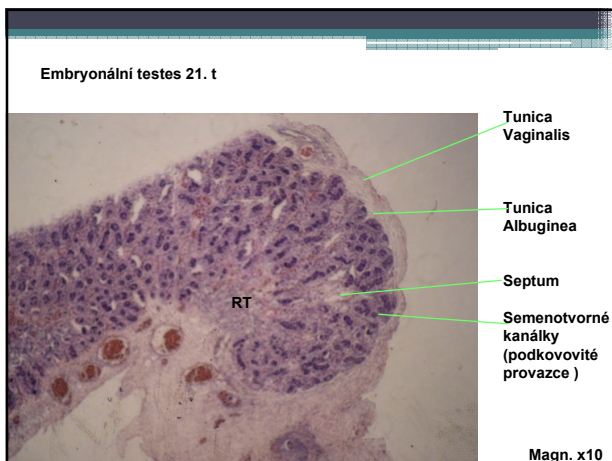
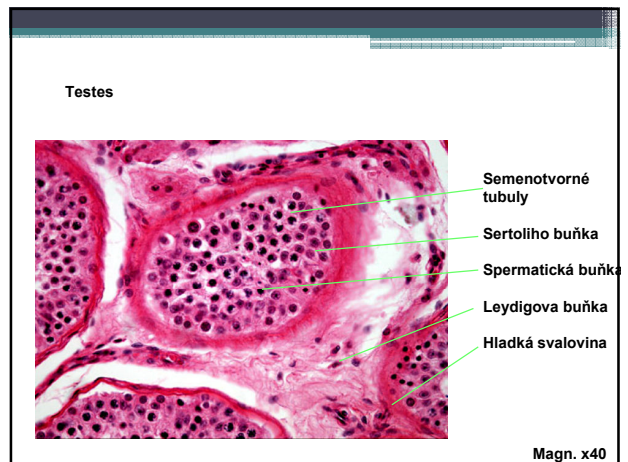
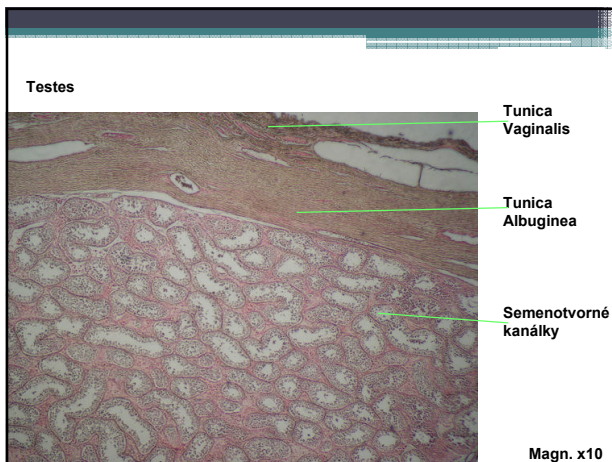
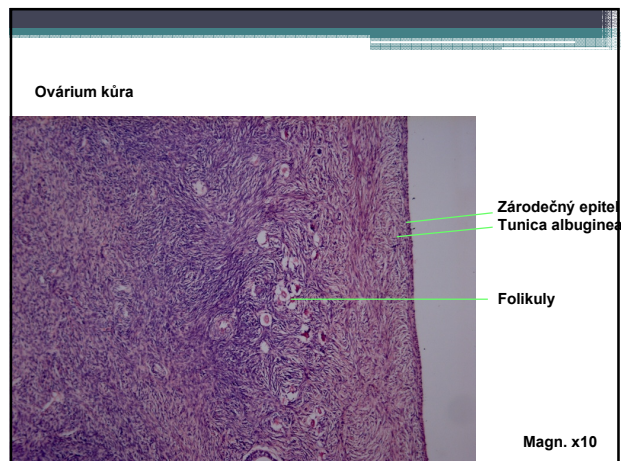
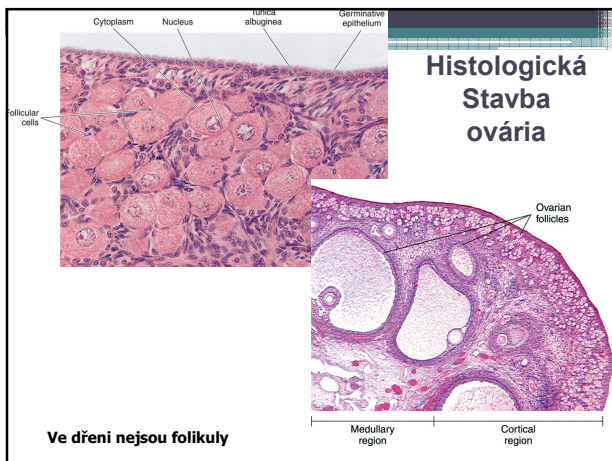
Embryo metanefros dřeň 21. t. BCL-XL – antiapoptotický protein



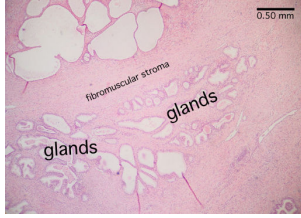
Henleovy klíčky (nižší buňky)  
 Sběrací kanálek (vyšší buňky)

Magn. x40

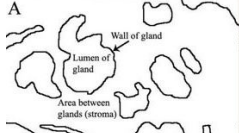
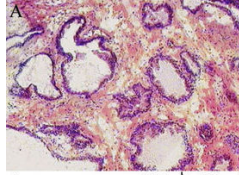




## Prostata



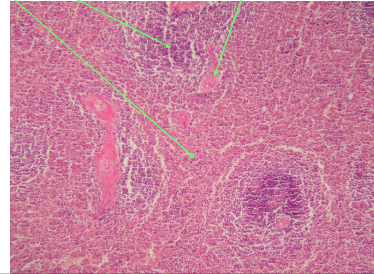
Magn. x 10



[http://histology-world.com/photoalbum/displayimage.php?album=43&pid=3067#top\\_display\\_media](http://histology-world.com/photoalbum/displayimage.php?album=43&pid=3067#top_display_media)

## Slezina

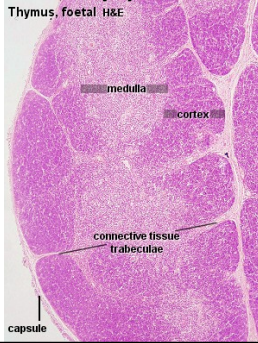
- Bílá pulpa - uzlíky lymfatické tkáně - Malpighiho tělíska, lymfocyty
- Červená pulpa - vazivo vyplněné krevními cévami.



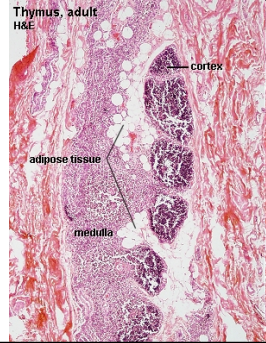
Magn. x 5

## Thymus

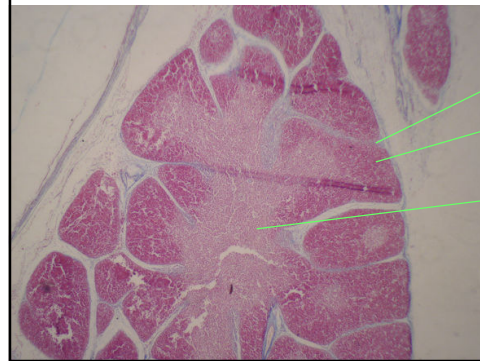
Vývoj



Involve



## Embryonální thymus 17.t



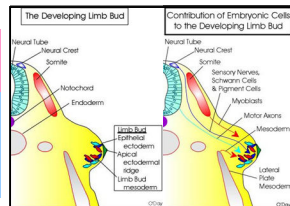
Magn. x 10

## Končetiny

- Osifikace
- Kosterní svalovina
- Integument

• Původ:

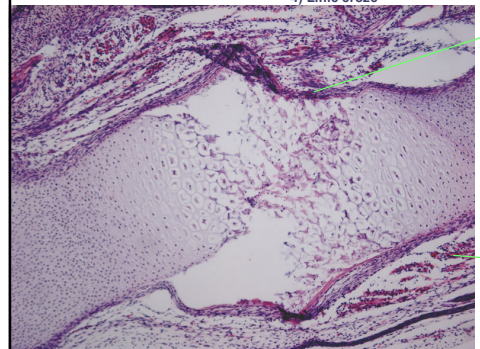
- Mezoderm boční ploténky
- Myotom – svalovina
- Dermatome – dermis
- Neurální trubice - motorické nervy
- Neurální lišta – senzorycké neurony
- Ektoderm – epidermis



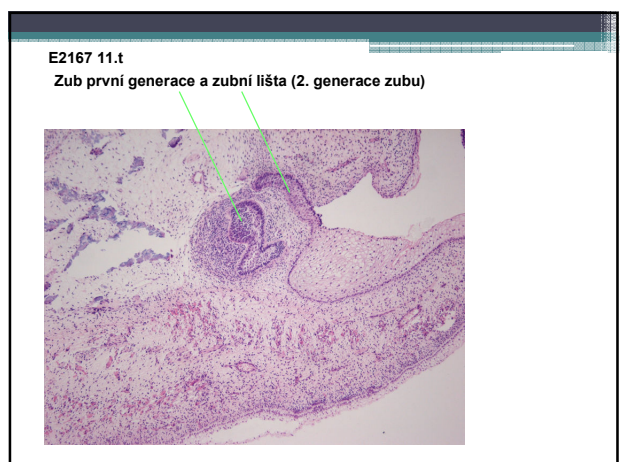
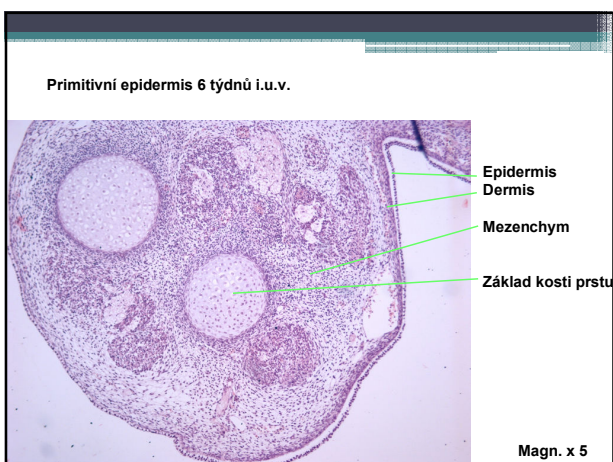
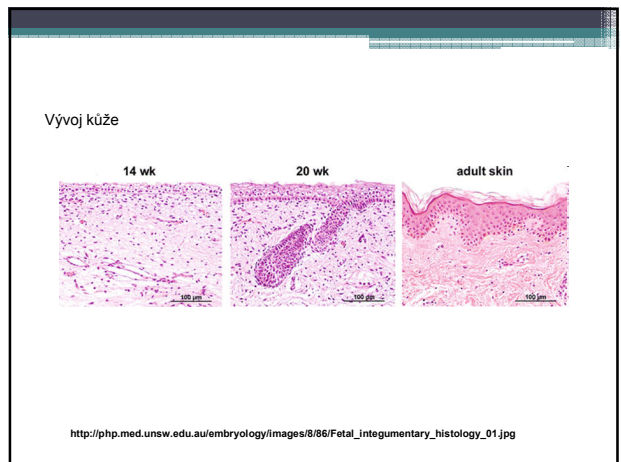
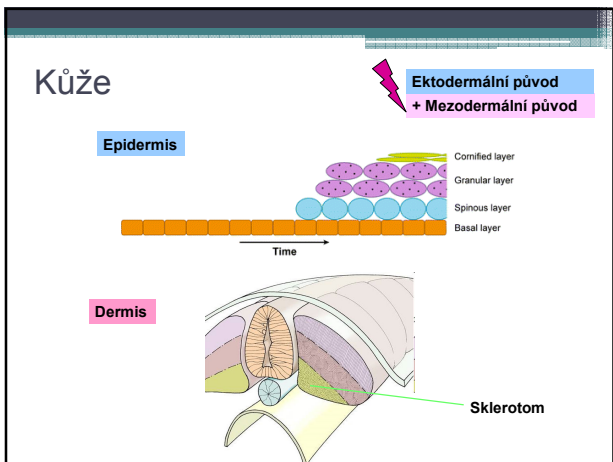
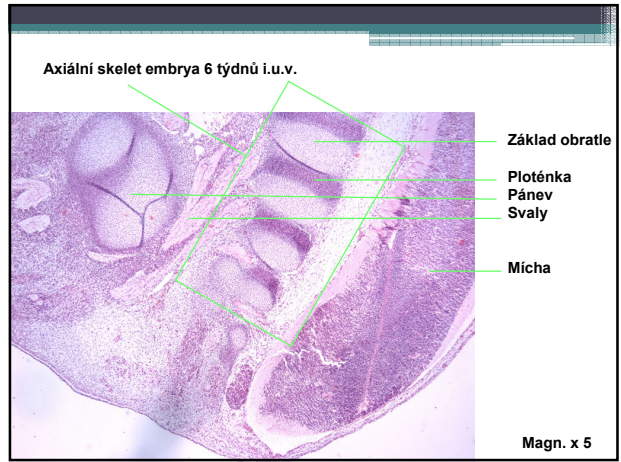
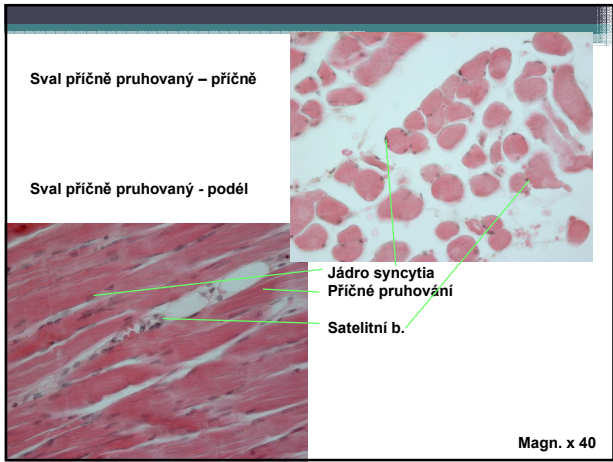
## Embryonální chrupavka 11. t

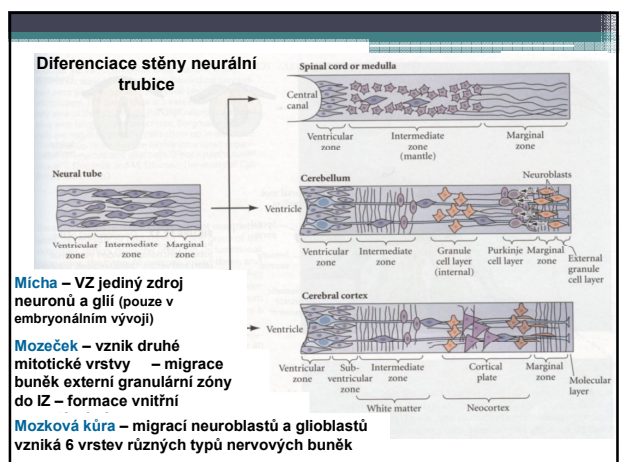
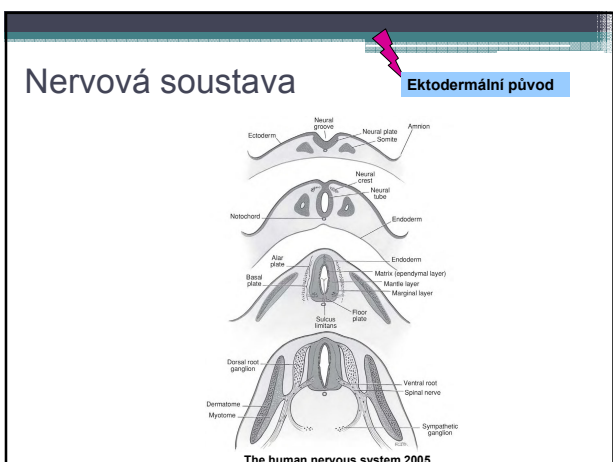
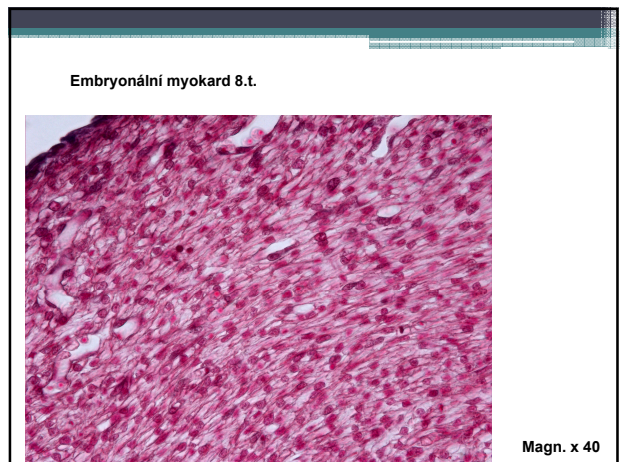
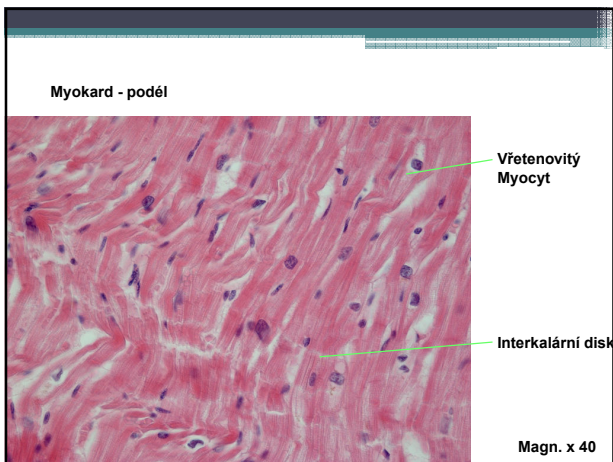
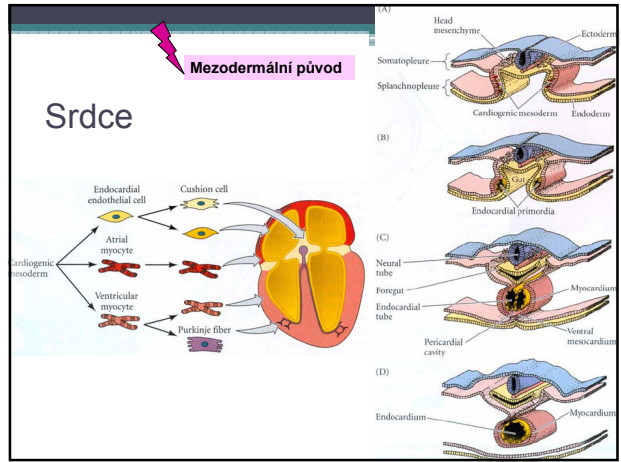
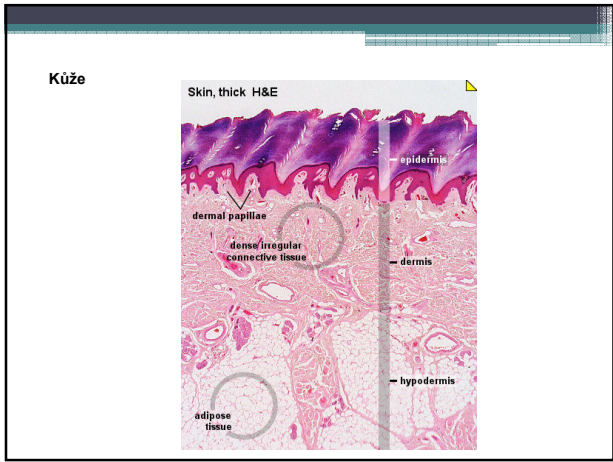
Umísti:

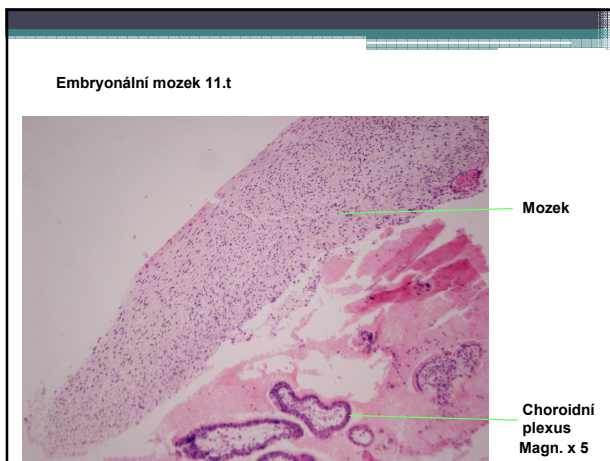
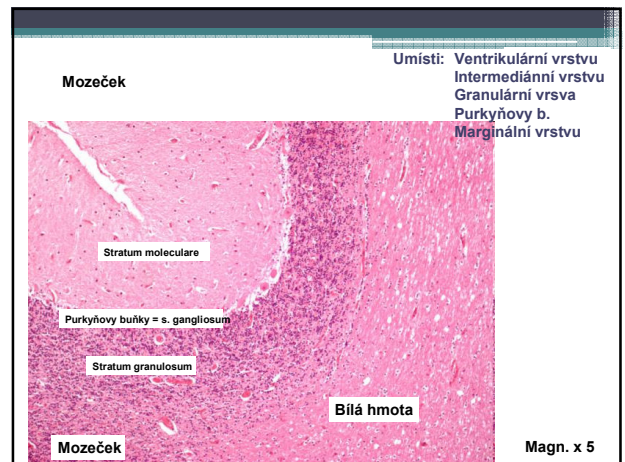
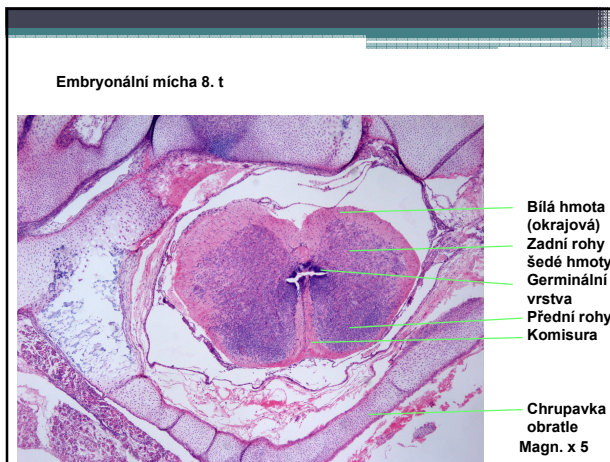
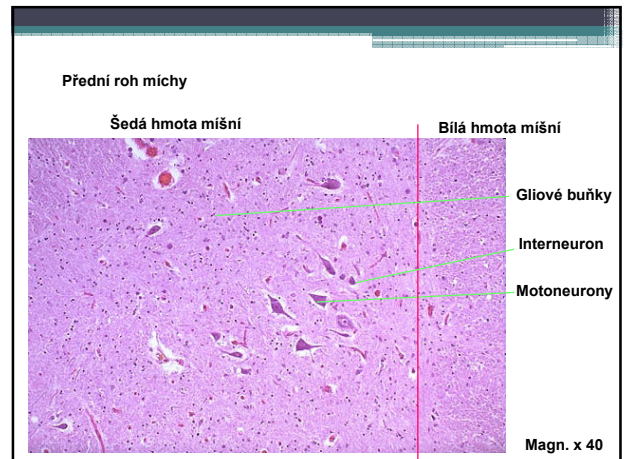
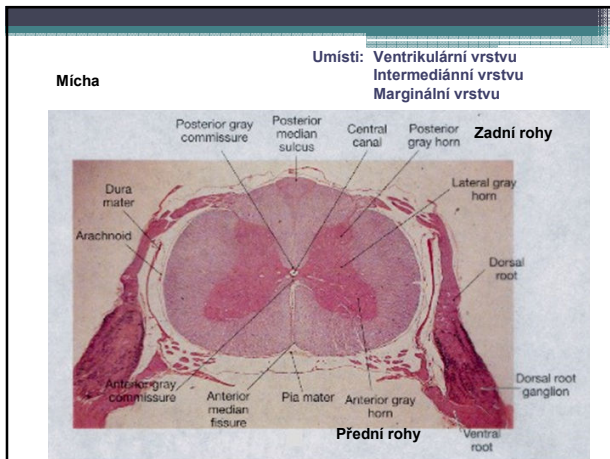
- 1) Zónu rostoucí chrupavky
- 2) Zónu hypertrofické chrupavky
- 3) Zónu kalcifikované chrupavky
- 4) Linie eroze



Magn. x 10







- Seznam preparátů**
- Ledvina - embryo 7. t P,D  
- větší embryo 21. t P,D
  - Gonády - dospělec testes P, ovárium P  
- embryo 21.t testes P
  - Slezina - dospělec P
  - Thymus - embryo 17. t P,D
  - Končetina - embryo 11.t D (zóny chrupavky)  
- dospělec - kosterní svalovina D, kost D
  - Axiální skelet - embryo 6. t P
  - Integument - embryo 7. t D  
- dospělec D
  - Srdce - embryo 11. t D,  
- dospělec D
  - Nervová s. - mícha embryo P  
- mícha dospělec (Bodián) P (vrstvy)  
- mozeček dospělec P (vrstvy)