

# Genome-wide insertional mutagenesis in human cells by the *Drosophila* mobile element *Minos*

Apostolos G. Klinakis<sup>1,2</sup>, Laskaro Zagoraiou<sup>1,3</sup>, Demetrios K. Vassilatis<sup>3</sup> and Charalambos Savakis<sup>1,3,+</sup>

<sup>1</sup>Institute of Molecular Biology and Biotechnology, Foundation for Research and Technology, Hellas, Heraklion 71110, <sup>2</sup>Department of Biology, University of Crete, Heraklion and <sup>3</sup>Medical School, University of Crete, Heraklion, Crete, Greece

Received June 27, 2000; revised September 11, 2000; accepted September 12, 2000

The development of efficient non-viral methodologies for genome-wide insertional mutagenesis and gene tagging in mammalian cells is highly desirable for functional genomic analysis. Here we describe transposon mediated mutagenesis (TRAMM), using naked DNA vectors based on the *Drosophila hydei* transposable element *Minos*. By simple transfections of plasmid *Minos* vectors in HeLa cells, we have achieved high frequency generation of cell lines, each containing one or more stable chromosomal integrations. The *Minos*-derived vectors insert in different locations in the mammalian genome. Genome-wide mutagenesis in HeLa cells was demonstrated by using a *Minos* transposon containing a *lacZ-neo* gene-trap fusion to generate a HeLa cell library of at least 10<sup>5</sup> transposon insertions in active genes. Multiple gene traps for six out of 12 active genes were detected in this library. Possible applications of *Minos*-based TRAMM in functional genomics are discussed.

## INTRODUCTION

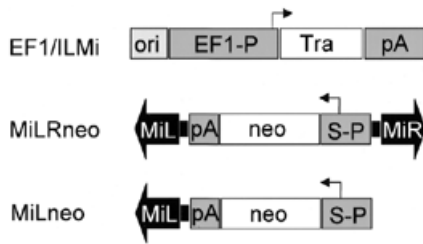
The complete sequence of the human genome is expected to be available soon and a versatile method for large scale insertional mutagenesis will be a *sine qua non* for its functional analysis. Insertional mutagenesis and gene trapping with plasmid or retroviral vectors has been successfully applied in mammalian cultured cells (Gossler *et al.*, 1989; Friedrich and Soriano, 1991; Wurst *et al.*, 1995; Hicks *et al.*, 1997; Bonaldo *et al.*, 1998; Whitney *et al.*, 1998; Zambrowicz *et al.*, 1998; Wiles *et al.*, 2000). The efficiency of plasmid vectors is limited by low insertion rates, while retroviral vectors are relatively difficult to manipulate. Transposable elements present an attractive alternative. Transposable elements have been used previously as vectors for gene and enhancer trapping in various complex

organisms, but not in mammals (Bier *et al.*, 1989; Bellen *et al.*, 1989; Wilson *et al.*, 1989; Parinov and Sundaresan, 2000; Wallbot, 2000). Most elements are mobilized through a cut-and-paste process catalysed by an element-encoded transposase that excises the element from its original plasmid or chromosomal site and re-integrates it elsewhere in the genome. *Minos* (Franz and Savakis, 1991) belongs to the *Tc1/mariner* superfamily of transposable elements (Franz *et al.*, 1994), members of which are active in a wide range of species from protozoa to mammals (Gueiros-Filho and Beverley, 1997; Ivics *et al.*, 1997; Schouten *et al.*, 1998; Luo *et al.*, 1998; Zhang *et al.*, 1998; Yant *et al.*, 2000). Transposition of *Minos* in cultured cells or embryos of several insect species suggests that this element may serve as a universal gene transfer and mutagenesis vector in insects (Loukeris *et al.*, 1995a,b; Catteruccia *et al.*, 2000a,b; Klinakis *et al.*, 2000; Shimizu *et al.*, 2000). Here we show that *Minos* is functional in human HeLa cells and that *Minos*-based vectors can be used for genome-wide mutagenesis and functional genomic analysis. We propose that *Minos*-based TRAMM (transposon mediated mutagenesis) may be a powerful tool for functional analysis of the human genome.

## RESULTS AND DISCUSSION

To test for transposase-catalysed chromosomal integration of *Minos* in human cells, two circular *Minos*-based plasmids were co-transfected into HeLa cells: a helper plasmid (pEF1/ILMi) carrying the *Minos* transposase gene driven by the human EF1 $\alpha$  (elongation factor 1 $\alpha$ ) promoter, and a donor plasmid (pMiLRneo) bearing a neomycin resistance gene driven by the SV40 promoter and flanked by *Minos* inverted repeats (Figure 1). Approximately 4% of the cells from each co-transfection,

\*Corresponding author. Tel: +30 81 391114; Fax: +30 81 391950; E-mail: savakis@imbb.forth.gr



**Fig. 1.** Minos-derived vectors. Minos inverted terminal repeats are shown as block arrows. Arrowheads indicate the direction of transcription of the transposase (Tra) and neo genes. pA is polyadenylation signal; ori and S-P are the SV40 origin of replication and promoter, respectively.

corresponding to  $10^5$  clones, were stably transformed to G418 resistance. A reduction ranging between 9- and 50-fold was observed in the absence of helper plasmid or in transfections with helper and pMiLneo, a ‘wings clipped’ donor lacking one of the two inverted repeats (Table I). These differences were reproducible and independent of transfection efficiencies, as indicated by transient expression of a co-transfected CMV/GFP construct.

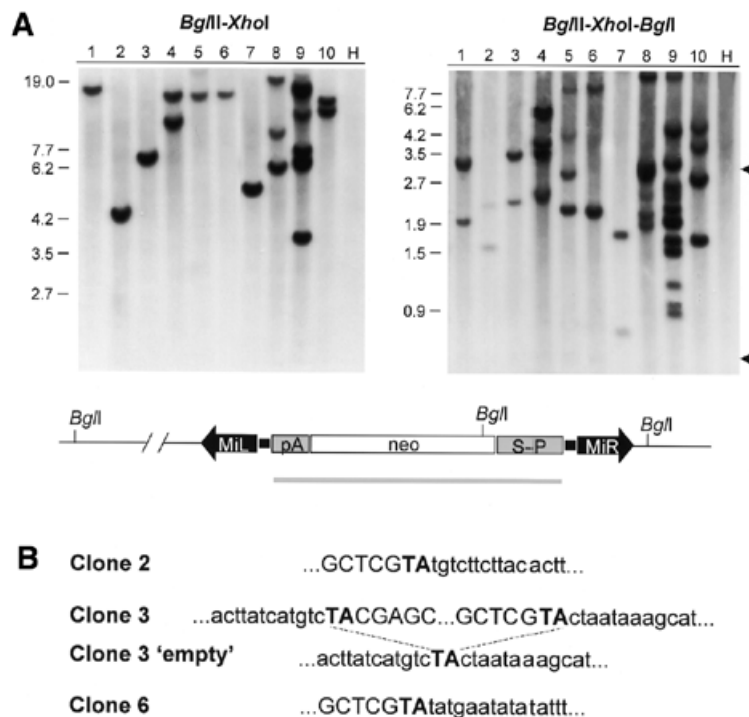
**Table I.** G418-resistant HeLa colonies generated after transfection with *Minos* plasmids.

Plasmids used in transfection	Experiment 1	Experiment 2
pMiLRneo + EF1	3350	6240
pMiLRneo + EF1/ILMi	32 600	102 960
pMiLneo + EF1/ILMi	3400	2040

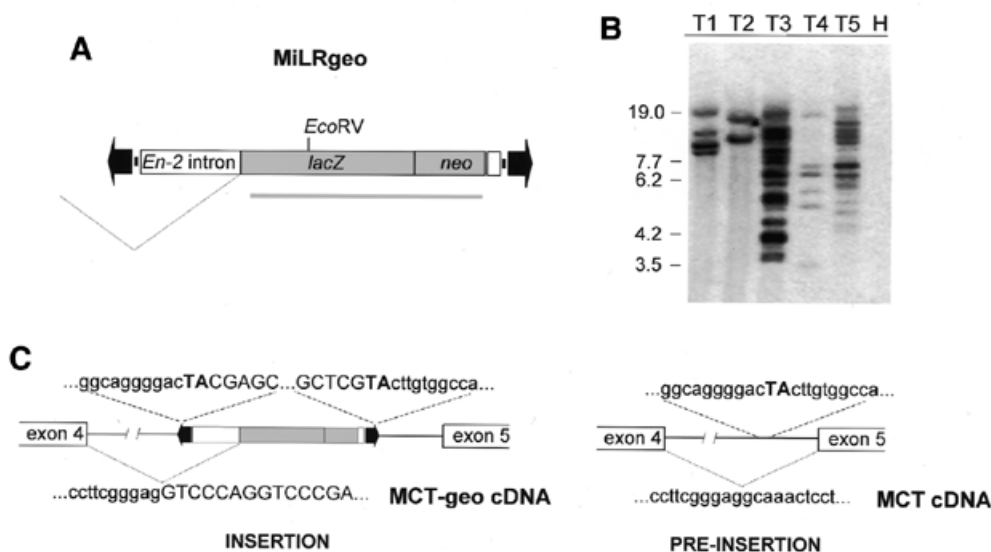
Numbers are averages of two duplicate transfections.

Genomic analysis of randomly selected clones derived from pMiLRneo and pEF1/ILMi co-transfection, indicated that single copies of the transposon had integrated at different genomic positions (Figure 2A). Restriction analysis failed to detect diagnostic fragments derived from integration of the entire donor plasmid (Figure 2A, triple digest). Absence of plasmid vector sequences was confirmed by re-probing the blots with an appropriate probe (data not shown). Analysis of 30 clones showed between one and seven insertions per clone, with a mean of 2.1.

As with all *Tc1/mariner* elements, *Minos* insertions invariably disrupt a TA dinucleotide, which is duplicated upon insertion (Loukeris *et al.*, 1995a). We determined the DNA sequences



**Fig. 2.** MiLRneo insertions in individual HeLa clones. (A) Southern blot analysis of individual colonies. Genomic DNA (10  $\mu$ g) was digested with the enzymes indicated before electrophoresis. The probe used is indicated by a grey bar. Arrowheads indicate the expected positions of diagnostic fragments derived from plasmid vector sequences. Lane H is from non-transfected cells. (B) Sequences flanking MiLRneo insertions. Transposon sequences and the target TA dinucleotide are in upper case.



**Fig. 3.** MiLRgeo gene-trap insertions. (A) The gene-trap construct MiLRgeo. The probe used for Southern blotting is indicated by a grey bar. (B) Southern blot analysis of individual HeLa lines stably transfected with MiLRgeo. Ten micrograms of DNA were digested with EcoRV. Lane H is from non-transfected cells. (C) Fusion cDNA and flanking intron sequences of a gene-trap insertion from clone T4. Transposon sequences and the target TA dinucleotide are in upper case.

flanking the MiLRneo transposon of three different clones bearing single insertions. All insertions had occurred at a TA dinucleotide and the flanking sequences were different from the original *Minos* flanks. In clone 3, the pre-insertion site was cloned and sequenced; the TA duplication was the only alteration introduced (Figure 2B).

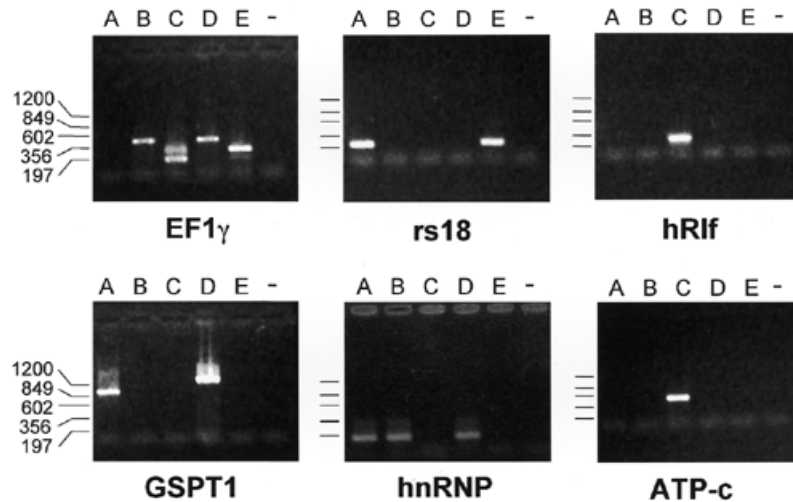
The observed high integration frequencies suggested that genome-wide gene trapping is possible. A *Minos*-based gene-trap construct (pMiLRgeo) was used, utilizing the first splice acceptor and part of exon 2 of the mouse *Engrailed-2* gene fused in-frame to an AUG-less *lacZ*-*neo* fusion (*geo*, Figure 3A). Upon insertion of *geo* vectors into introns of active genes in the appropriate orientation, in-frame splicing of the *geo* fusion to the upstream exon confers resistance to G418 and occasionally gives detectable galactosidase activity. Co-transfection of HeLa cells with pMiLRgeo plus pEF1/ILMi resulted in 10- to 100-fold lower frequency of G418-resistant clones compared with pMiLRneo. Transposase-induced insertions were 10-fold more frequent than in the absence of transposase. Southern blot analysis of five randomly chosen clones indicates that insertions occurred in different genomic positions, varying in number from 1 to 10 per clone (Figure 3B). From 16 individual G418-resistant clones, eight were positive for  $\beta$ -galactosidase activity (data not shown). As in all random mutagenesis schemes, occurrence of multiple hits can complicate downstream analysis. This problem is of lesser concern in gene trap experiments, since gene traps are identified at the level of cDNA rather than at the genomic level.

A fusion transcript from clone T4 was recovered by 5' RACE and the sequence of the splice junction was determined. Integration had occurred into the fourth intron of the monocarboxylate transporter 3 (MCT3) gene. Analysis of the insertion sequence showed that the transposon had inserted at a TA ~1.7 kb

upstream from exon 5, generating the characteristic target TA duplication (Figure 3C).

The restriction patterns shown in Figures 2 and 3 were unchanged after >50 passages, indicating that *Minos* insertions in HeLa cells are stable (data not shown).

Using standard protocols, transfection of  $10^6$  cells can yield  $\sim 4 \times 10^4$  clones carrying *Minos* insertions. Since the average number of insertions per clone is  $\sim 2$  (Figure 2A), this corresponds to a total number of  $8 \times 10^4$  individual insertions per  $10^6$  transfected cells. Therefore, a library containing  $3 \times 10^6$  insertions can be generated from  $4 \times 10^7$  cells. Such a library should contain, on average, one insertion per kb. To further challenge *Minos* as a tool for genome-wide gene trapping,  $4 \times 10^7$  HeLa cells distributed in twenty 100 mm tissue culture dishes were co-transfected with gene trap vector pMiLRgeo and helper pEF1/ILMi. G418 selection yielded  $\sim 10^5$  G418-resistant colonies. Given that only a fraction of genes should be active in HeLa cells, *Minos* insertions should have occurred in the majority of active genes. To test this, five sets of four plates each were pooled to create sub-libraries of  $\sim 2 \times 10^4$  clones each. Poly(A)<sup>+</sup> RNA was isolated from each pool, and was used to detect gene-trap fusions of 12 genes whose intron-exon structure is known, and which have been reported or are expected to be active in HeLa cells (Ryo *et al*, 1998; see legend to Figure 4). Fusion RT-PCR products were detectable for six of these genes without the need to optimize PCR conditions or use alternate primers. Four of the genes were hit in more than one pool and two were hit in more than one intron (Figure 4 and Table II). It is notable that only two of the nine exon traps detected were in-frame. This suggests that the remaining fusions represent 'by-standers', i.e. that the respective cells may carry at least one other gene trap that confers G418 resistance. Considering the limitations of RT-PCR, that HeLa cells are largely polyploid, and taking into



**Fig. 4.** Trapping of six genes in HeLa cells with MiLRgeo. Each panel shows agarose gel electrophoresis separated, ethidium bromide stained RT-PCR products that were recovered from five independent pools (A–E) of G418-resistant clones. The control lane corresponds to a reaction without template. The panels correspond to genes (accession numbers in brackets): elongation factor 1 $\gamma$  (EF1 $\gamma$ ) (Z11531); ribosomal protein 18 (rs18) (X69150); DNA replication licensing factor homolog (hRlf) (D39073); G<sub>1</sub> to S phase transition protein 1 homolog (GSPT1) (X17644); heterogeneous nuclear ribonucleoprotein A2/B1 (hnRNP) (D28877); ATP synthase c-subunit (ATP-c) (X69908). Genes that were not detected are: thymidine kinase (M15205), ATP synthase  $\gamma$ -subunit (D16561), F-actin capping protein (U03271), a putative protein kinase C inhibitor (U51004), hypoxanthine phosphoribosyltransferase 1 (NM\_000194) and cytochrome c core I protein (L16842).

**Table II.** Sequences of gene-trap chimeric cDNAs.

Gene	Exon trapped	No. of hits	Approx. intron size (kb)	Sequence <sup>a</sup>
EF1 $\gamma$	4	1	3.4	...gct gac atc aca gtt gtc tgc acc ctg ttg tgg ctc tat aag cag GT CCC AGG...
EF1 $\gamma$	5	2	0.4	...tc ttg ggg gaa gtg aaa ctg tgt gag aag atg gcc cag ttt gat gGT CCC AGG...
EF1 $\gamma$	6	2	5.7	...gct gag ccc aag gcc aag gac ccc ttc gct cac ctg ccc aag ag GT CCC AGG...
rs18	1	2	3.0	...att gat ggg cgg cgg aaa ata gcc ttt gcc atc act gcc att aag GT CCC AGG...
hRlf	9	1	2.3	...gcc cgc tgc agt gtt ttg gca gct gcc aac cct gtc tac ggc agg GT CCC AGG...
GSPT1	9	1	5.4	...gga tct att tgt aaa ggc cag cag ctt gtg atg atg cca aac aag GT CCC AGG...
GSPT1	13	1	2.5	...tt aaa gac ttc cct cag atg ggt cgt ttc acc tta aga gatgag gGT CCC AGG...
hnRNP	1	3	2.7	...ga aat cgg gct gaa gcg act gag tcc gcg atg gag GT CCC AGG...
ATP-c	4	1	3.7	...tgg gat tgg aac tgt gtt tgg gag cct cat cat tgg tta tgc cag GT CCC AGG...

<sup>a</sup>Trapped exon sequences are in lower case; the first eight *En-2* exon 2 bases are in upper case. Codons are separated by spaces.

account that our sample (12 genes) is rather small, our experiments indicate that at least 50% of the genes that are active in HeLa cells have been tagged. Further experiments are required to determine whether the element inserts preferentially into transcriptionally active regions of the genome.

We show for the first time that a transposable element can potentially tag all genes of the human genome. Furthermore, we demonstrate that *Minos*-based TRAMM can be used for high efficiency gene trapping in a human cell line. Biological phenomena such as differentiation, response to external stimuli, and disease, frequently involve alterations of transcriptional

levels of specific genes. This work opens the way to use *Minos*-based TRAMM for efficient genome-wide functional identification of transcriptionally modulated genes in cell lines. *Minos*-based TRAMM could also be useful for high-throughput screening of ES cells for potential knockouts.

## METHODS

**Plasmids.** Helper plasmid pEF1/ILMi was constructed by inserting the spliced transposase coding region (Klinakis *et al.*, 2000) into the *Clal*–*XbaI* sites of plasmid pEF-BOS (Goldman *et al.*, 1996). Donor plasmid pMiLRneo was constructed by

A.G. Klinakis et al.

replacing the tetracycline resistance gene in pMiLRtetR (Klinakis et al., 2000) by a SV40-neo cassette (pRcCMV, Invitrogen). ‘Wings-clipped’ pMiLneo is pMiLRneo lacking a SacII–SacI fragment containing the *Minos* right-hand inverted repeat. The gene-trap plasmid vector pMiLRgeo was constructed by replacing the SV40-neo cassette from pMiLRneo with an EcoRI–HindIII *geo* cassette from plasmid pGT1.8geo (Skarnes et al., 1995).

**Cell culture and transfection.** HeLa cells were cultured in Dulbecco’s Modified Eagle’s Medium (DMEM) supplemented with 10% fetal calf serum and 50 µg/ml gentamycin at 37°C, 5% CO<sub>2</sub>. Exponentially growing HeLa cells (6 × 10<sup>5</sup>) were transfected in 3 ml DMEM with 8 µg pMiLRneo or pMiLneo and 2 µg pEF-BOS or pEF1/ILMi, using calcium phosphate precipitation. One microgram of plasmid pQBI25 (Quantum) containing a *GFP* gene under the control of the cytomegalovirus promoter was included in all mixes for reference. Two days post-transfection, the cells were transferred to medium containing 600 µg/ml G418 (Gibco).

**Amplification and cloning of the insertion sites.** Genomic DNA from three clones with single insertions was digested with EcoRV and probed with a *neo* probe. The gel regions containing the *Minos* flanks were cut out and DNA was isolated and digested with either *Sau3A*I or *Alu*I. The *Sau3A*I fragments were ligated to vectorettes (Vectorette II kit, Genosys) and PCR was performed with vectorette-specific primers and the *Minos* primers: IMio1 (5′-AAGAGAATAAAATTCTCTTTGAGACG-3′) for the first PCR and IMio2 (5′-GATAATATAGTGTGTTAAACATTGCGC-3′) for the ‘nested’ PCR. The *Alu*I fragments were circularized after dilution and inverse PCR was performed with *Minos* primers, IMio1 and IMii1 (5′-CAAAAATATGAGTAATTTATCAAACGG-3′), followed by a second round of ‘nested’ PCR with primers IMio2 and IMii2 (5′-GCTTAAGAGATAAGAAAAAAGTGACC-3′). At least one flank of each insertion was recovered. The ‘right-hand’ flank from one of the clones (clone 3) was recovered by screening a human genomic library with the left flank as probe and using the sequence adjacent to the known flank for primer design. The pre-insertion site sequence of clone 3 was recovered from non-transfected HeLa DNA by PCR.

**Amplification and cloning of fusion cDNAs.** A modification of the 5′ RACE protocol (cRACE) was used to identify fusion cDNAs (Maruyama et al., 1995). Total RNA was reverse transcribed with AMV reverse transcriptase (Gibco) using the *geo* specific primer ZRT (5′-GACCGTAATGGGATAGGTTAC-3′). The *geo* specific primers used for inverse PCR were: ZF1 (5′-CAGTTGCGCAGCCTGAATGGG-3′) and ZR1 (5′-CTTCGCTATTACGCCAGCTGG-3′) for the first PCR; and ZF2 (5′-GCTGGCTGGAGTGCGATC-TTC-3′) and ZR2 (5′-CAGGGTTTTCCAGTCACGAC-3′) for the ‘nested’ PCR. The right-hand flank of the insertion was isolated by PCR using *Minos* primer IMio1 and MCT3 exon 5 primer GGCTTCTCCTAATGCAG. The left flank and the pre-insertion site in the MCT3 intron were recovered as described above for the MiLRneo insertion.

**Identification of trapped genes by RT–PCR.** Reverse transcription was performed with the Superscript II system (Gibco) using 0.5 µg poly(A)<sup>+</sup> RNA from each pool as template and primer ZR1. Gene-trap insertions were identified using nested PCR with two *geo*-specific primers (ZR2 for the first and TGCTCTGTCAGGTACCTGTTGG for the second PCR) and two gene-specific

primers (sequences of gene-specific primers available upon request). Amplification products were analysed by agarose gel electrophoresis. Individual bands were eluted from the gel and cloned in a TA vector (Promega T-easy).

## ACKNOWLEDGEMENTS

We thank G. Vrentzos for technical help and S. Oehler for critically reading the manuscript. This work was supported by a grant from the European Union to C.S. (BIO4-CT98-0203) and a Career Development Award grant from the Greek Secretariat for Research and Technology to D.K.V.

## REFERENCES

- Bellen, H.J., O’Kane, C.J., Wilson, C., Grossniklaus, U., Pearson, R.K. and Gehring, W.J. (1989) *P*-element-mediated enhancer detection: a versatile method to study development in *Drosophila*. *Genes Dev.*, **3**, 1288–1300.
- Bier, E. et al. (1989) Searching for pattern and mutation in the *Drosophila* genome with a *P-lacZ* vector. *Genes Dev.*, **3**, 1273–1287.
- Bonaldo, P., Chowdhury, K., Stoykova, A., Torres, M. and Gruss, P. (1998) Efficient gene trap screening for novel developmental genes using IRES β *geo* vector and *in vitro* preselection. *Exp. Cell Res.*, **244**, 125–136.
- Catteruccia, F., Nolan, T., Blass, C., Muller, H.M., Crisanti, A., Kafatos, F.C. and Loukeris, T.G. (2000a) Toward *Anopheles* transformation: *Minos* element activity in anopheline cells and embryos. *Proc. Natl Acad. Sci. USA*, **97**, 2157–2162.
- Catteruccia, F., Nolan, T., Loukeris, T.G., Blass, Savakis, C., Kafatos, F.C. and Crisanti, A. (2000b) Stable germline transformation of the malaria mosquito *Anopheles stephensi*. *Nature*, **405**, 959–962
- Franz, G. and Savakis, C. (1991) *Minos*, a new transposable element from *Drosophila hydei*, is a member of the *Tc1*-like family of transposons. *Nucleic Acids Res.*, **19**, 6646.
- Franz, G., Loukeris, T.G., Dialektaki, G., Thompson, C.R. and Savakis, C. (1994) Mobile *Minos* elements from *Drosophila hydei* encode a two-exon transposase with similarity to the paired DNA-binding domain. *Proc. Natl Acad. Sci. USA*, **91**, 4746–4750.
- Friedrich, G. and Soriano, P. (1991) Promoter traps in embryonic stem cells: a genetic screen to identify and mutate developmental genes in mice. *Genes Dev.*, **5**, 1513–1523.
- Goldman, L.A., Cutrone, E.C., Kottenko, S.V., Krause, C.D. and Langer, J.A. (1996) Modifications of vectors pEF-BOS, pcDNA1 and pcDNA3 result in improved convenience and expression. *Biotechniques*, **21**, 1013–1015.
- Gossler, A., Joyner, A.L., Rossant, J. and Skarnes, W.C. (1989) Mouse embryonic stem cells and reporter constructs to detect developmentally regulated genes. *Science*, **244**, 463–465.
- Gueiros-Filho, F.J. and Beverley, S.M. (1997) Trans-kingdom transposition of the *Drosophila* element *mariner* within the protozoan *Leishmania*. *Science*, **276**, 1716–1719.
- Hicks, G.G., Shi, E.G., Li, X.M., Li, C.H., Pawlak, M. and Ruley, H.E. (1997) Functional genomics in mice by tagged sequence mutagenesis. *Nature Genet.*, **16**, 338–244.
- Ivics, Z., Hackett, P.B., Plasterk, R.H. and Izsvak, Z. (1997) Molecular reconstruction of *Sleeping Beauty*, a *Tc1*-like transposon from fish, and its transposition in human cells. *Cell*, **91**, 501–510.
- Klinakis, A.G., Loukeris, T.G., Pavlopoulos, A. and Savakis, C. (2000) Mobility assays confirm the broad host range activity of the *Minos* transposable element and validate new transformation tools. *Insect Mol. Biol.*, **9**, 269–275.
- Loukeris, T.G., Arca, B., Livadaras, I., Dialektaki, G. and Savakis, C. (1995a) Introduction of the transposable element *Minos* into the germ line of *Drosophila melanogaster*. *Proc. Natl Acad. Sci. USA*, **92**, 9485–9489.
- Loukeris, T.G., Livadaras, I., Arca, B., Zabalou, S. and Savakis, C. (1995b) Gene transfer into the medfly, *Ceratitis capitata*, with a *Drosophila hydei* transposable element. *Science*, **270**, 2002–2005.

- Luo, G., Ivics, Z., Izsvak, Z. and Bradley, A. (1998) Chromosomal transposition of a *Tc1/mariner*-like element in mouse embryonic stem cells. *Proc. Natl Acad. Sci. USA*, **95**, 10769–10773.
- Maruyama, I.N., Rakow, T.L. and Maruyama, H.I. (1995) cRACE: a simple method for identification of the 5' end of mRNAs. *Nucleic Acids Res.*, **23**, 3796–3797.
- Parinov, S and Sundaresan, V. (2000) Functional genomics in *arabidopsis*: large-scale insertional mutagenesis complements the genome sequencing project. *Curr. Opin. Biotechnol.*, **11**, 157–161.
- Ryo, A., Kondoh, N., Wakatsuki, T., Hada, A., Yamamoto, N. and Yamamoto, M. (1998) A method for analysing the qualitative and quantitative aspects of gene expression: a transcriptional profile revealed for HeLa cells. *Nucleic Acids Res.*, **26**, 2586–2592.
- Schouten, G.J., van Luenen, H.G., Verra, N.C., Valerio, D. and Plasterk, R.H. (1998) Transposon *Tc1* of the nematode *Caenorhabditis elegans* jumps in human cells. *Nucleic Acids Res.*, **26**, 3013–3017.
- Shimizu, K., Kamba, M., Sonobe, H., Kanda, T., Klinakis, A.G., Savakis, C. and Tamura, T. (2000) Extrachromosomal transposition of the transposable element *Mimos* occurs in embryos of the silkworm *Bombyx mori*. *Insect Mol. Biol.*, **9**, 277–281.
- Skarnes, W.C., Moss, J.E., Hurlley, S.M. and Beddington, R.S. (1995) Capturing genes encoding membrane and secreted proteins important for mouse development. *Proc. Natl Acad. Sci. USA*, **92**, 6592–6596.
- Walbot, V. (2000) Saturation mutagenesis using maize transposons. *Curr. Opin. Plant Biol.*, **3**, 103–107.
- Whitney, M., Rockenstein, E., Cantin, G., Knapp, T., Zlokarnik, G., Sanders, P., Durick, K., Craig, F.F. and Negulescu, P.A. (1998) A genome-wide functional assay of signal transduction in living mammalian cells. *Nature Biotechnol.*, **16**, 1329–1333.
- Wiles, M.V. *et al.* (2000) Establishment of a gene-trap sequence tag library to generate mutant mice from embryonic stem cells. *Nature Genet.*, **24**, 13–14.
- Wilson, C., Pearson, R.K., Bellen, H.J., O'Kane, C.J., Grossniklaus, U. and Gehring, W.J. (1989) *P*-element-mediated enhancer detection: an efficient method for isolating and characterizing developmentally regulated genes in *Drosophila*. *Genes Dev.*, **3**, 1301–1313.
- Wurst, W. *et al.* (1995) A large-scale gene-trap screen for insertional mutations in developmentally regulated genes in mice. *Genetics*, **139**, 889–899.
- Yant, S.R., Meuse, L., Chiu, W., Ivics, Z., Izsvak, Z. and Kay, M.A. (2000) Somatic integration and long-term transgene expression in normal and haemophilic mice using a DNA transposon system. *Nature Genet.*, **25**, 35–41.
- Zambrowicz, B.P., Friedrich, G.A., Buxton, E.C., Lilleberg, S.L., Person, C., and Sands, A.T. (1998) Disruption and sequence identification of 2000 genes in mouse embryonic stem cells. *Nature*, **392**, 608–611.
- Zhang, L., Sankar, U., Lampe, D.J., Robertson, H.M., and Graham, F.L. (1998) The Himar1 mariner transposase cloned in a recombinant adenovirus vector is functional in mammalian cells. *Nucleic Acids Res.*, **26**, 3687–93.

DOI: 10.1093/embo-reports/kvd089