

The Middle Ages in pollen-analytical research on the territory of the Czech Republic

Vlasta Jankovská
**Institute of Botany, Academy of Sciences of the Czech
Republic**
Lidická 25/27, 602 00 BRNO, Czech Republic
vlasta.jankovska@ibot.cas.cz

**This research was supported by the grant 206/09/1564 of the Grant
Agency of the Czech Republic and research plan AV0Z 60050516.**

This lecture presents an orientation survey of mostly own results of pollen analyses of samples of medieval ages from archaeological situations in the Czech Republic. The aim of several-years cooperation with archaeologists was to find out whether and in what extent the results of pollen analyses are able to specify more exactly the outcomes of archaeological research.

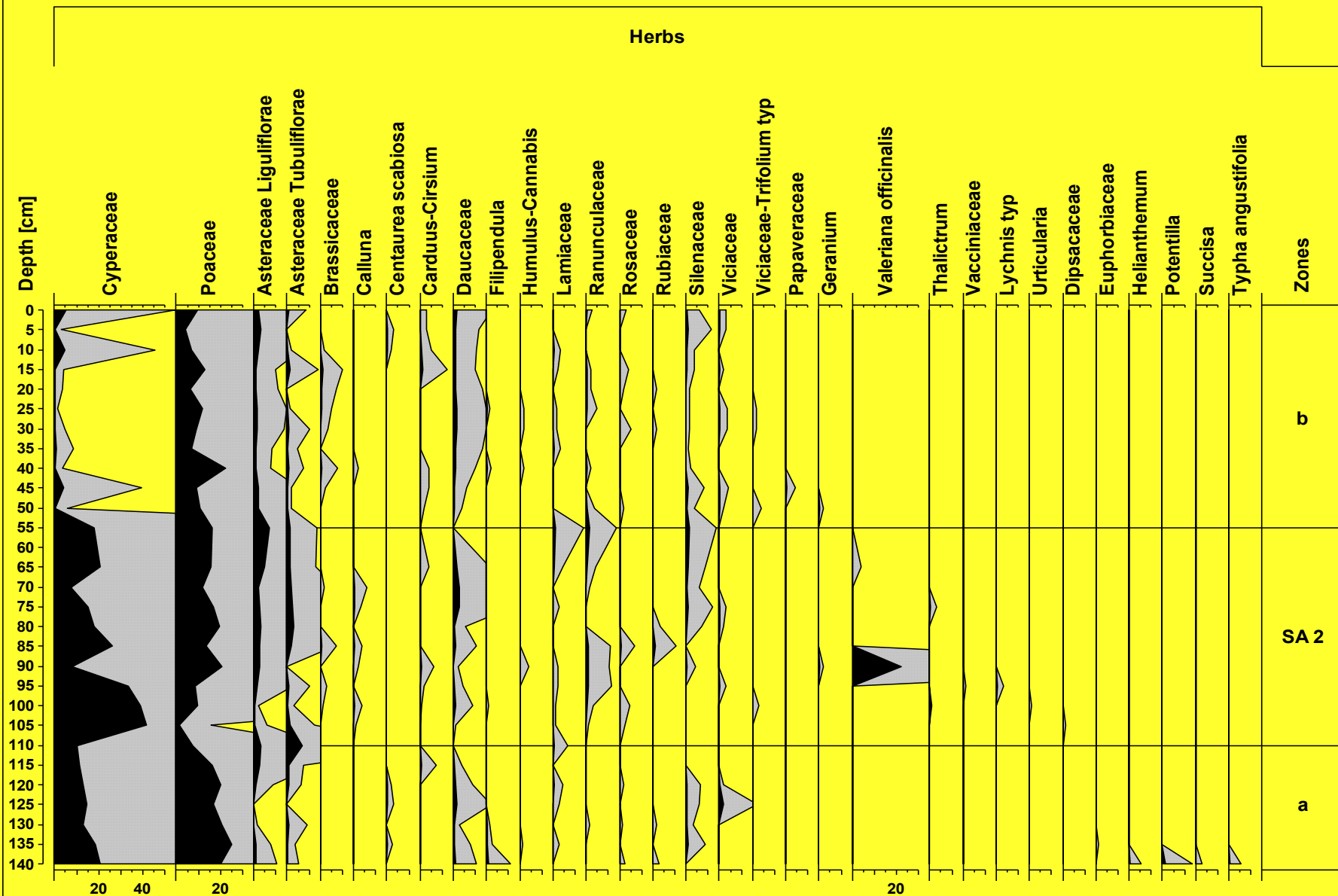
Pollen-analytical research in the Czech Republic, which is made specific for archaeologists, have not a longer tradition. On the contrary the intensive cooperation of specialists in macroremains-analyses with archaeologists enjoys a longer tradition (dr. E. Opravil, dr.V.Čulíková, ing.E.Hajnalová et others).

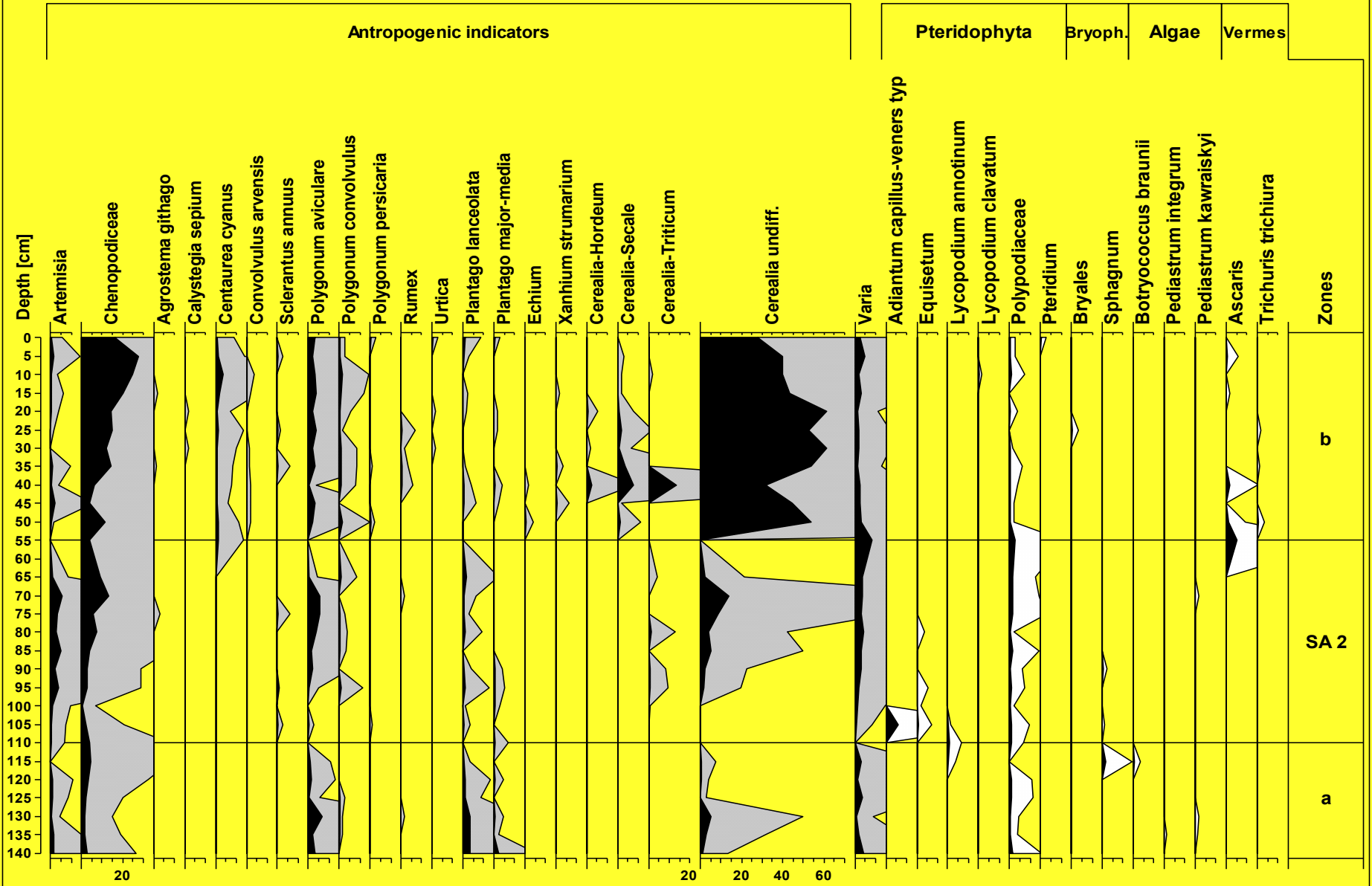
This map shows survey of localities with my own pollen-analytical research (exception Pohansko). Only some results were publicated – sorry!



As an example of pollen-analytical research, the pollen diagram from the town Most (NW part of the Czech Republic – Bohemia) is presented. The medieval town Most was destroyed by mining of brown coal.

Alluvial deposits of the small river Bílina from the centre of „old“ town Most provided pollen-analytical information about the environment of this town in Early and High Middle Ages.



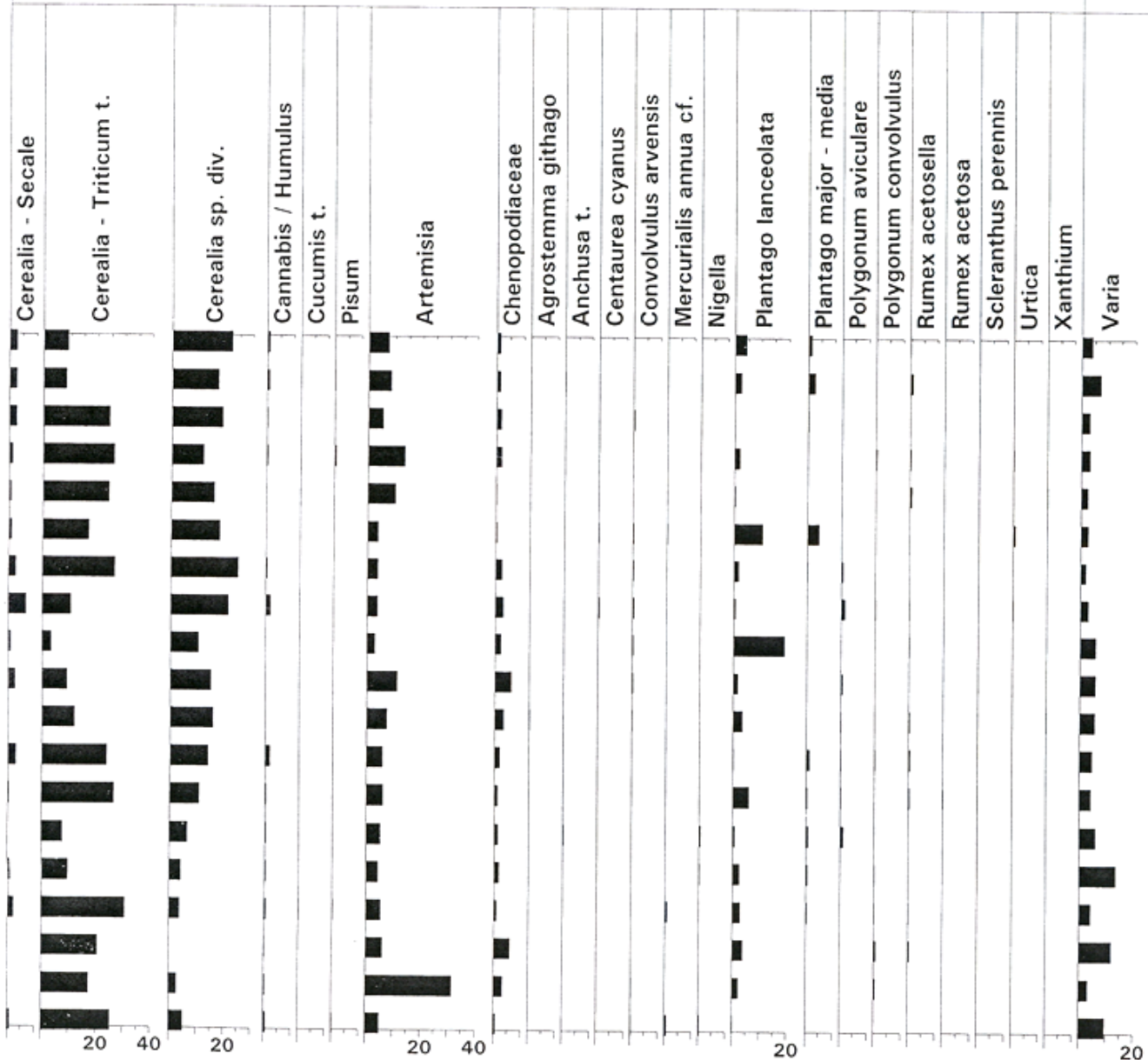


As an example of pollen-analytical research from the Early Middle Ages (8-9.century) serves pollen diagram from Prague, locality Mostecká cesta. It is localized on the left bank of Vltava river, not far from Prague Castle. All samples were taken on this locality, but in different places (not continuous profile).

HERBS

Oleaceae	
Papaveraceae	
Ranunculaceae	
Rosaceae	
Scrophulariaceae	
Silenaceae	
Viciaceae	
Aconitum t.	
Adonis annua t.	
Alchemilla	
Allium t.	
Bellis t.	
Calluna	
Campanula	
Centaurea jacea t.	
Centaurea scabiosa	
Centaureium	
Cerastium t.	
Cirsium t.	
Daucus t.	
Delphinium t.	
Euphrasia t.	
Euphorbia	
Filipendula	
Galium t.	
Helianthemum	
Hypericum	
Chamaenerion	
Chelidonium	
Impatiens noli-tangere	
Lathyrus t.	
Lythrum salicaria	
Melampyrum	
Mentha t.	
Peucedanum t.	
Pimpinella t.	
Pleurospermum austriacum	
Potentilla t.	
Pulmonaria t.	
Ranunculus t.	
Rumex	
Sanguisorba officinalis	
Scabiosa	
Silene t.	
Succisa t.	
Symphytum officinale	
Thalictrum	
Trifolium t.	
Trifolium pratense t.	
Vaccinium t.	
Valeriana	
Veronica	
Vicia t.	

Anthropogenic Indicators



Pterid. Bryop. Vermes

AP + NAP = 100%

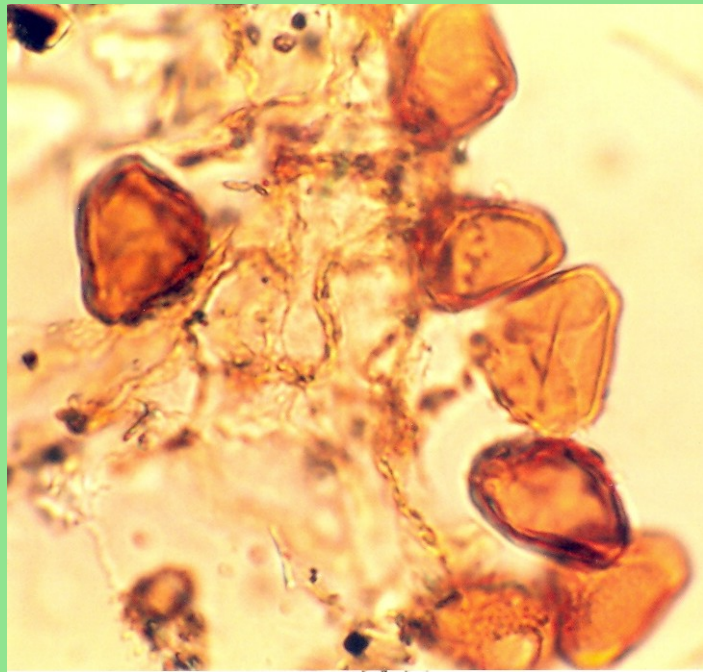
Equisetum	587
Lycopodium clavatum	557
Polypodiaceae	349
Anthoceros laevis	425
Sphagnum	392
Ascaris	756
Taenia cf.	310
Trichuris trichiura	340
Thecaphora (FUNGI)	345
Arcella (RHIZOPODA)	339
	442
	413
	490
	384
	423
	598
	324
	500
	551

Prague – Náměstí republiky: List of found pollen grains, spores and NPP taxons (mainly High and Late Middle Ages)

PRAGUE - NÁMĚSTÍ REPUBLIKY - Square (List of found taxons)			
Taxyony	Taxyony	Taxyony	Taxyony
<u>AP</u>	<u>NAP</u>	Cerealia-Secale	Hypericum
Alnus glutinosa t.	Aconitum t.	Cerealia-Triticum t.	Chenopodiaceae
Abies	Adonis aestivalis t.	Centaurea sp.	Iris t.
Betula alba t.	Agrostemma githago	Centaurea cyanus	Knautia
Carpinus	Ajuga t.	Centaurea jacea t.	Lathyrus t.
Corylus	Alchemilla	Centaurea scabiosa	Lamiaceae
Fagus	Allium t.	Cirsium t.	Lilium
Hedera	Anchusa t.	Consolida / Nigella	Liliaceae
Juglans	Anetum graveolens t.	Convolvulus arvensis	Lotus t.
Juniperus	Anemone t.	Cuscuta	Lysimachia t.
Ligustrum t.	Arctium t.	Cyperaceae	Lythrum salicaria
Lonicera	Artemisia	Daucaceae	Lychnis t.
Myrtus t.	Asteraceae Liguliflorae	Daucus t.	Mentha t.
Picea	Asteraceae Tubuliflorae	Echium	Melampyrum
Pinus sylvestris t.	Bellis t.	Eranthis t.	Mercurialis annua
Pinus cembra t.	Boraginaceae	Erica t.	Papaver t.
Prunus t.	Borago officinalis	Ericaceae	Pastinaca t.
Ribes rubrum	Brassicaceae	Euphorbia	Phlomis t.
Rosa t.	Brassicaceae-Cardamine	Euphrasia / Rhinanthus	Pimpinella anisum
Salix	Butomus t.	Fagopyrum	Pimpinella major t.
Sambucus nigra	Calluna	Filipendula	Pisum
Tilia cordata	Calendula	Galium t.	Plantago lanceolata
Tilia platyphylla	Caltha t.	Gentiana t.	Plantago major-media
Ulmus	Calystegia	Helianthemum	Polemonium
Quercus	Campanula t.	Heleborus viridis t.	Polygonum aviculare
Vitis	Cerealia sp. div.	Humulus / Cannabis	Polygonum convolvulus

PRAGUE - NÁMĚSTÍ REPUBLIKY - Square (List of found taxons)

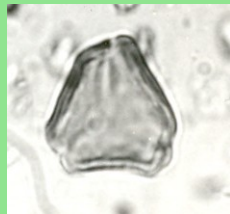
Taxony	Taxony	Taxony
Polygonum persicaria t.	Stachys t.	Anthoceros punctatus
Poaceae	Symphytum t.	Hepaticae sp.div.
Potentilla t.	Succisa	
Pulsatilla t.	Xanthium cf. strumarium	<u>ALGAE</u>
Ranunculaceae	Teucrium t.	Botryococcus sp.
Ranunculus t.	Thalictrum	Botryococcus neglectus
Ranunculus arvensis t.	Trifolium pratense t.	Botryococcus neglectus x pila t.
Rosaceae	Trifolium t.	Pediastrum boryanum var. boryanum
Rubiaceae	Urtica	Pediastrum boryanum var. cornutum
Rumex sp.	Vaccinium t.	
Rumex acetosella t.	Valerianella dentata t.	<u>VERMES</u>
Rumex acetosa t.	Vicia t.	Ascaris
Rumex aquatilis t.	Viciaceae	Enterobius
Sanguisorba minor	Varia	Vermes sp.
Sanguisorba officinalis		Trichuris
Scabiosa	<u>PTERIDOPHYTA</u>	
Sagina t.	Polypodiaceae	<u>FUNGI</u>
Scleranthus annuus	Pteridium	Fungi sp.
Scrophulariaceae	Lycopodium annotium t.	Gelasinospora
Silenaceae	Lycopodium clavatum	Thecaphora
Silene t.	Equisetum	
Solanum nigrum		<u>RHIZOPODA</u>
Solanum cf. tuberosum	<u>BRYOPHYTA</u>	Arcella
Solanum t.	Sphagnum	
Sparganium - Typha angustifolia	Anthoceros laevis	



Myrtus type, Praha, Karlovo náměstí



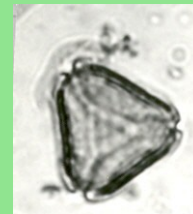
Nymburk



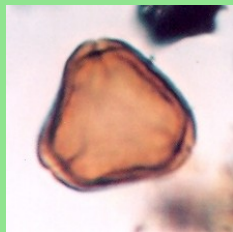
Praha, Václavské náměstí



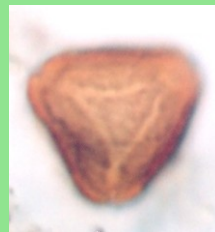
Myrtus type



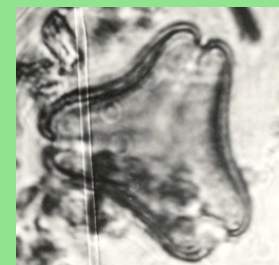
Prachatice



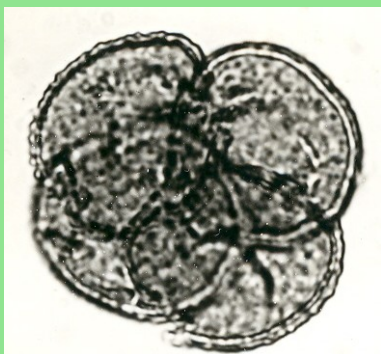
Myrtus type Opava, Drůbeží trh



Vitis, Praha
Náměstí Republiky



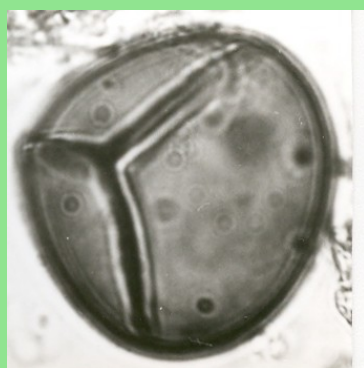
Loranthus
Prachatice



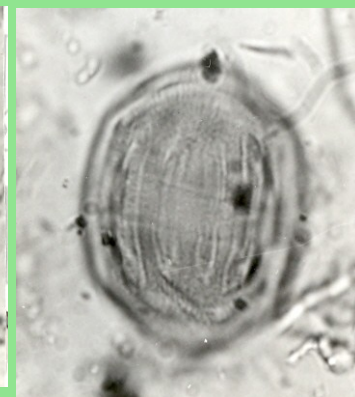
Calluna, Praha



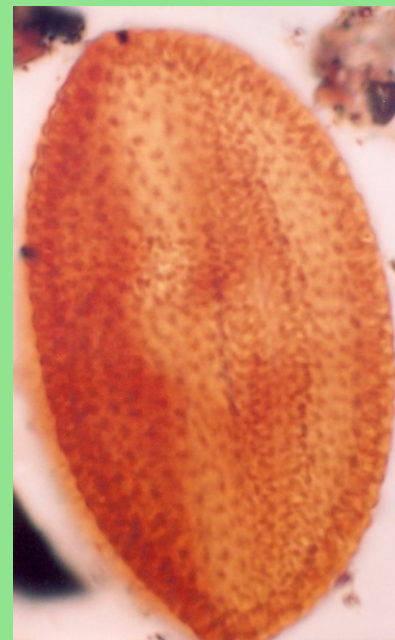
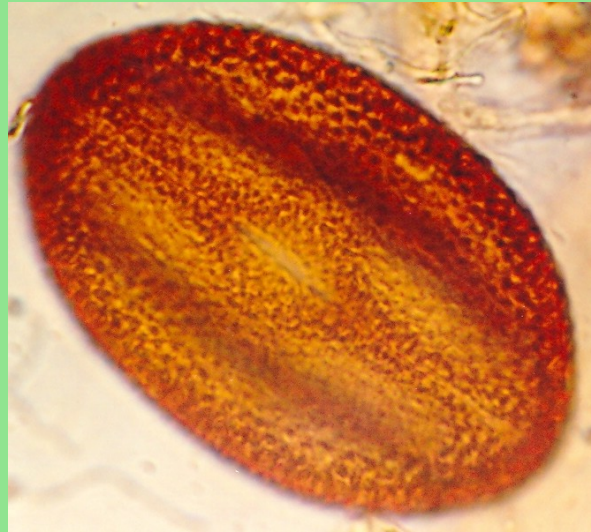
Adiantum type, Most



Borago officinalis, Praha, Václavské náměstí



Fagopyrum cf. esculentum

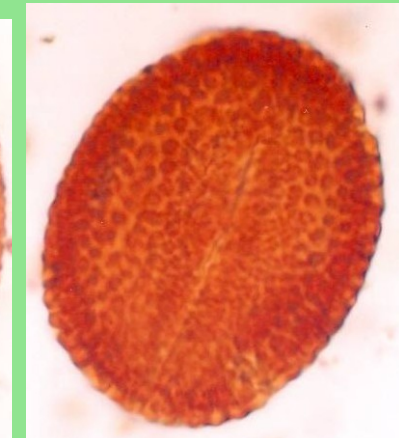
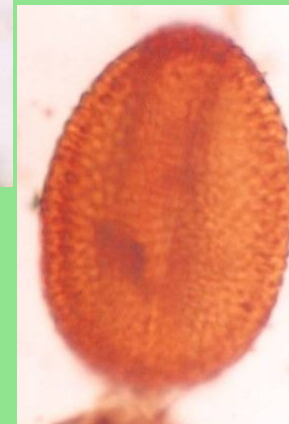


Praha, Karlovo náměstí

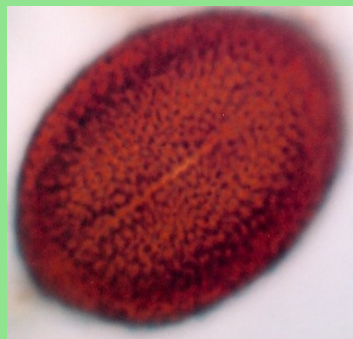
Praha, Náměstí Republiky



Opava, Drúbeží trh

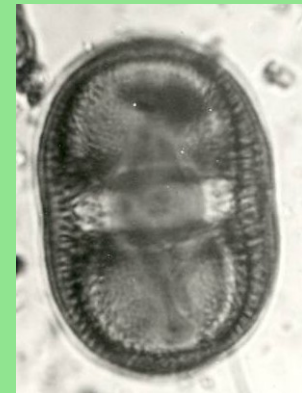


Praha, Náměstí Republiky



Chotěbuz

Centaurea cyanus

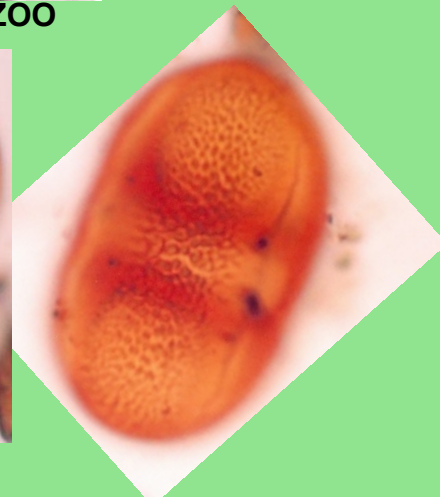
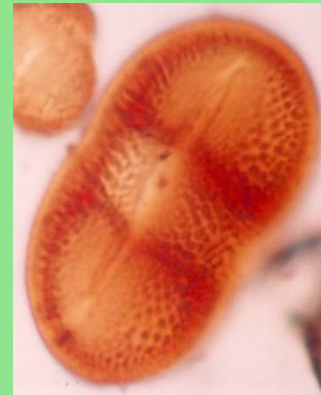


Praha, Václavské náměstí

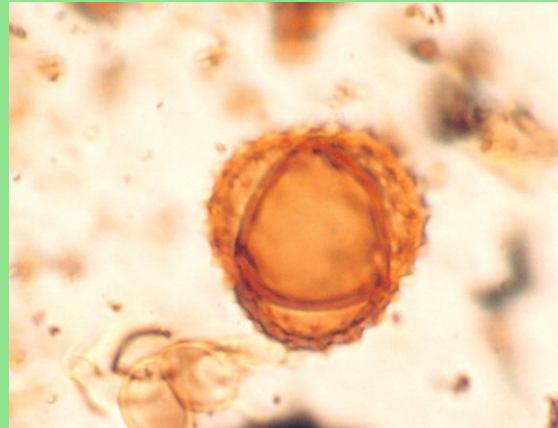


Praha, Náměstí Republiky

Centaurea cyanus and ZOO

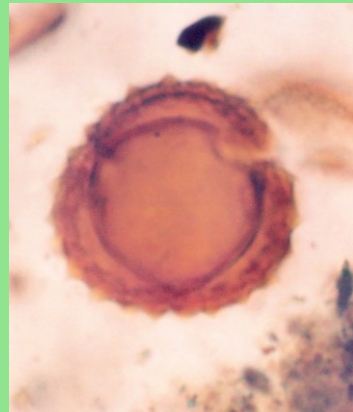


Praha, Náměstí Republiky



Ambrosia cf. *artemisifolia*

Krkonoše, CZ (long distance transport 2007)

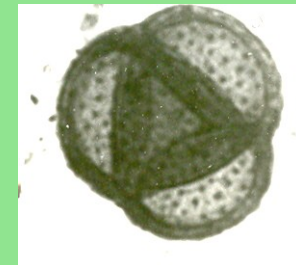


Ambrosia cf. *artemisifolia*

Vysoké Tatry, SK

(long distance transport 2007)

Chotěbuz, 60 cm

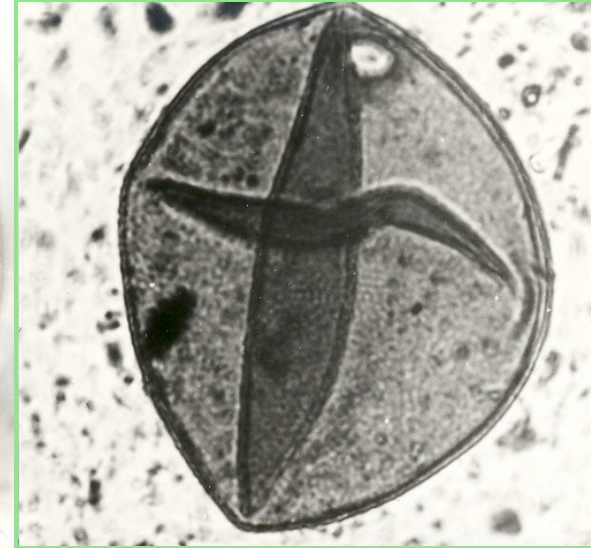


Xanthium cf. *strumarium*, Most

Cultivated plants



Secale, Praha



Triticum type, Most

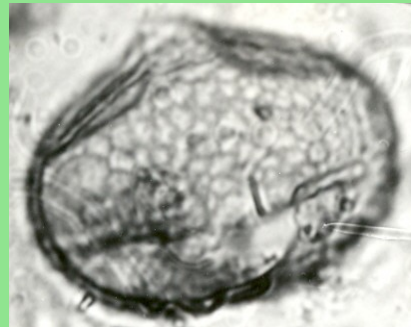


Vicia cf. *sativa*, Praha, Náměstí republiky

cf. *Pisum*, Praha, Náměstí republiky



Vicia cf. *sativa*, Prachatice



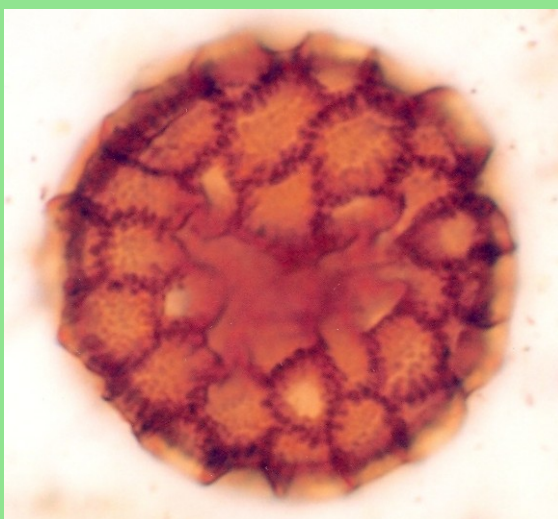
cf. *Pisum*, Prachatice



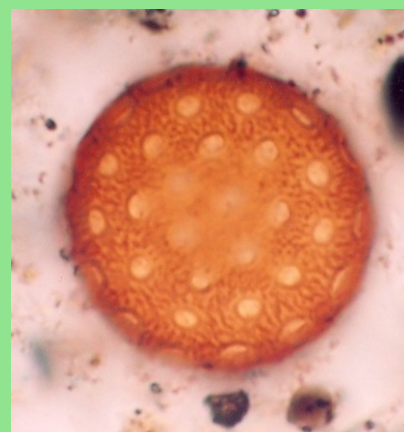
Fagopyrum, Chotěbuz, P 10



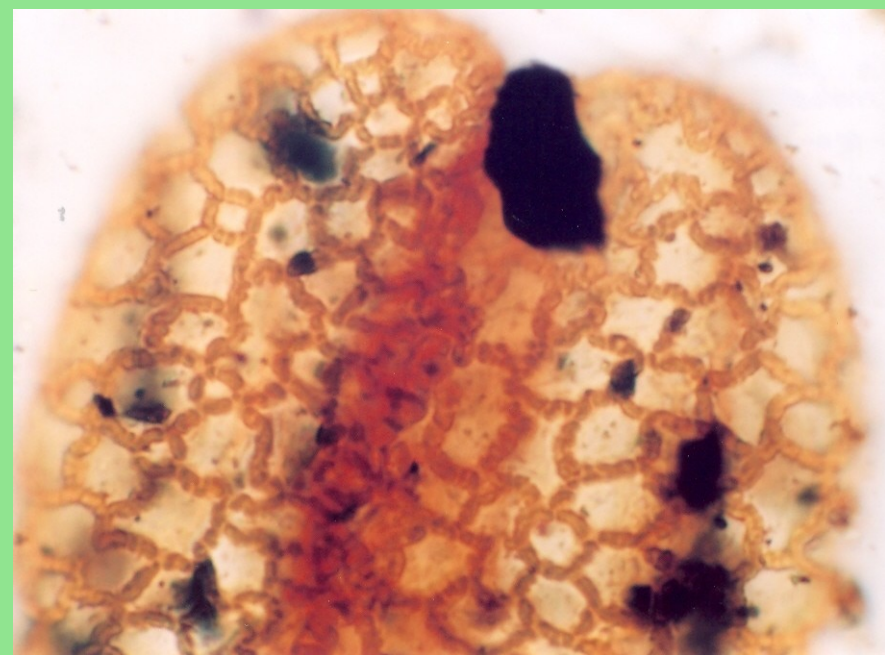
Triticum type, Chotěbuz, 60 cm



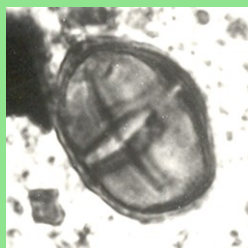
Polygonum persicaria type
Chotěbuz, 60 cm



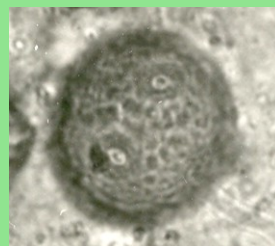
Chenopodiaceae,
Praha, Náměstí Republiky



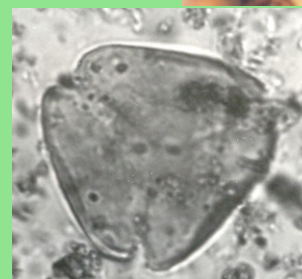
Lilium type, Praha, Náměstí Republiky



Polygonum convolvulus,
Most



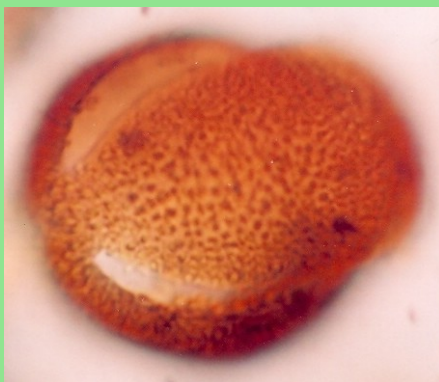
Plantago lanceolata,
České Budějovice



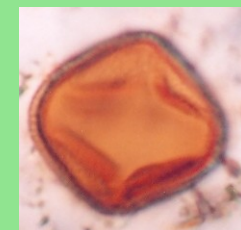
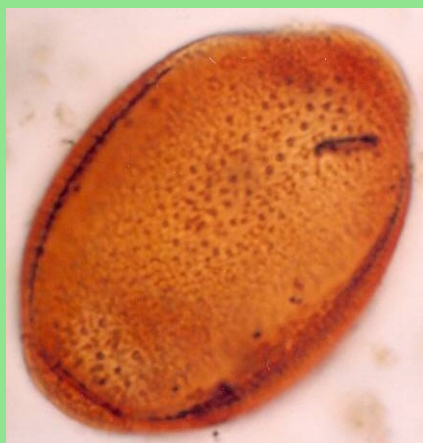
Rhinanthus type, Praha,
Václavské náměstí



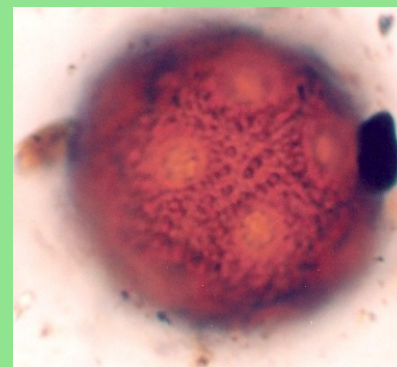
Cerinte, Praha,
Václavské náměstí



Nigella type, Praha, Náměstí Republiky



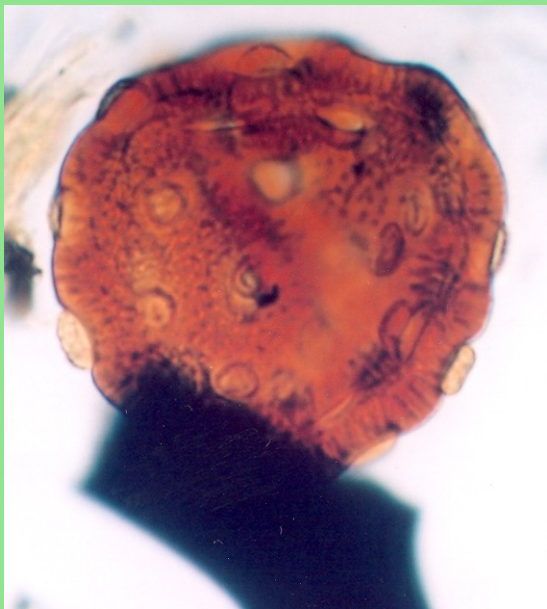
Mercurialis annua?
Praha, Náměstí
Republiky



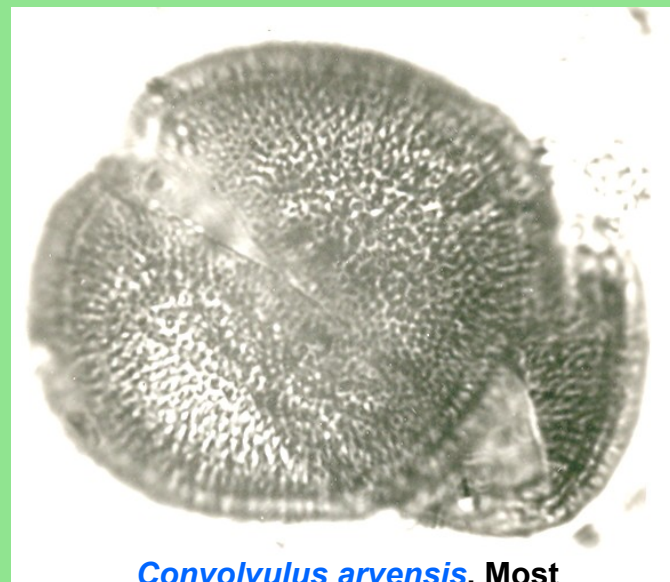
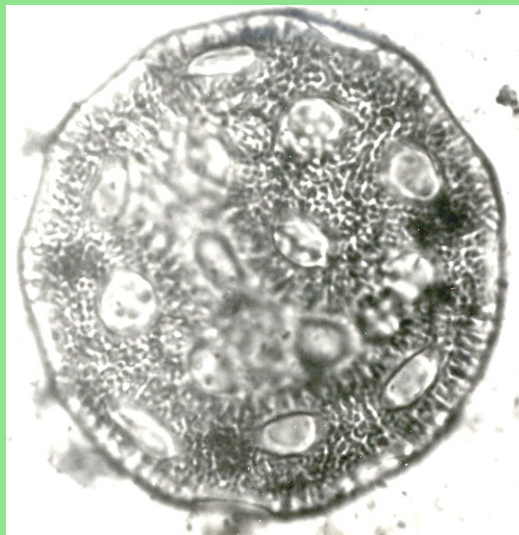
Cerastium type
Chotěbuz, 60 cm



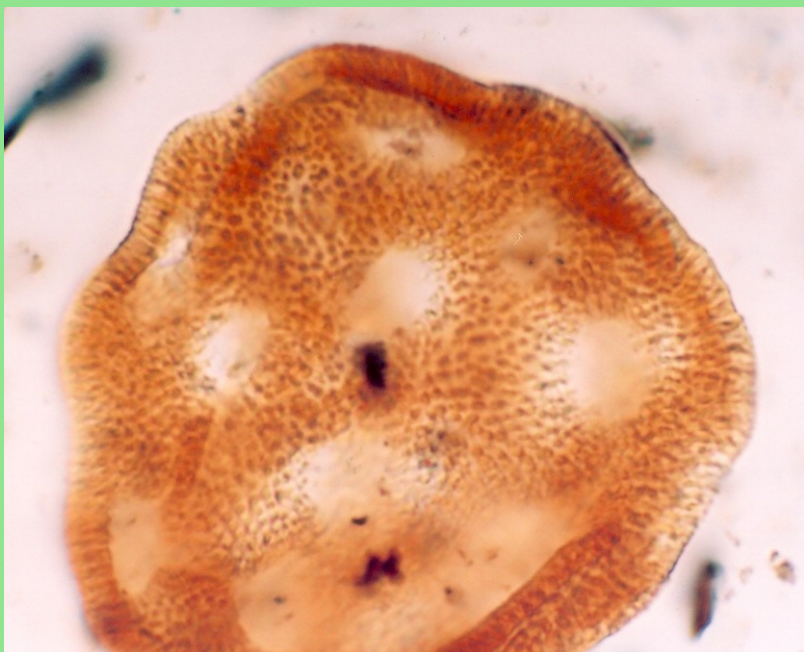
Scleranthus annuus
Chotěbuz, 60 cm



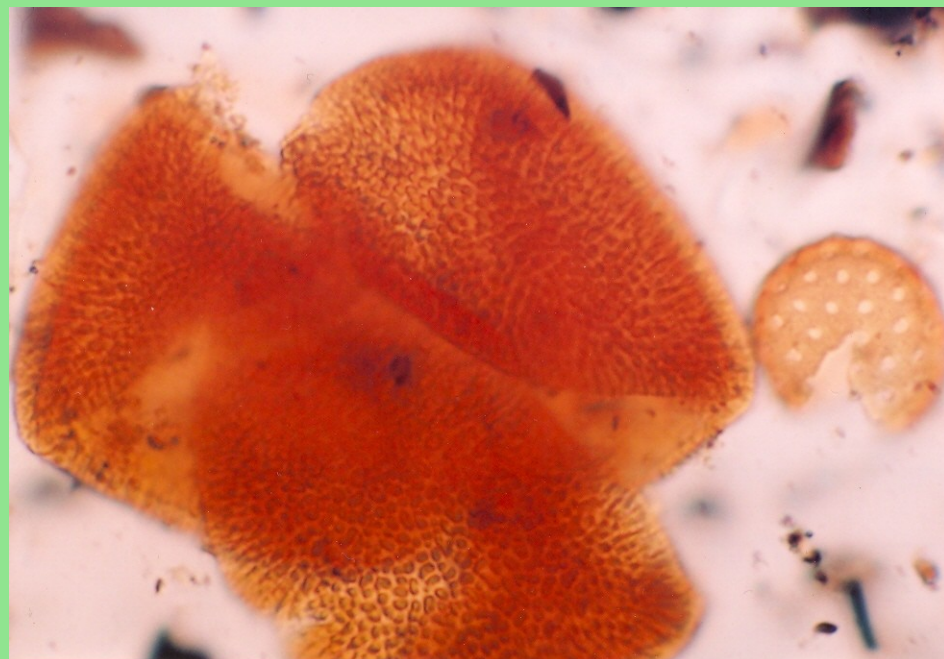
Agrostemma type, Opava, Drůbeží trh



Convolvulus arvensis, Most

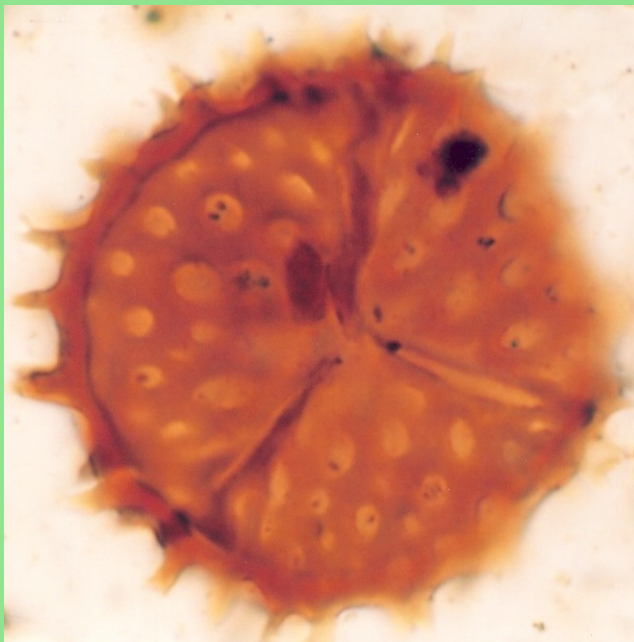


Calystegia, Praha, Náměstí Republiky

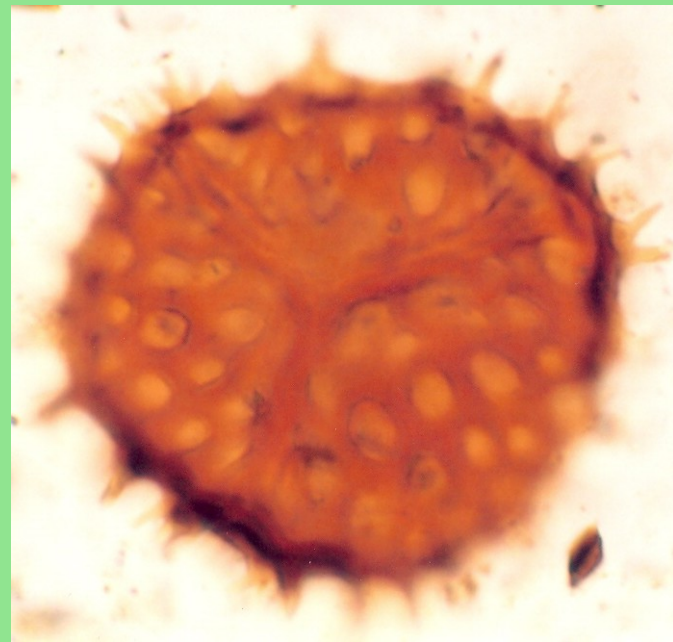


Convolvulus, Praha, Náměstí Republiky

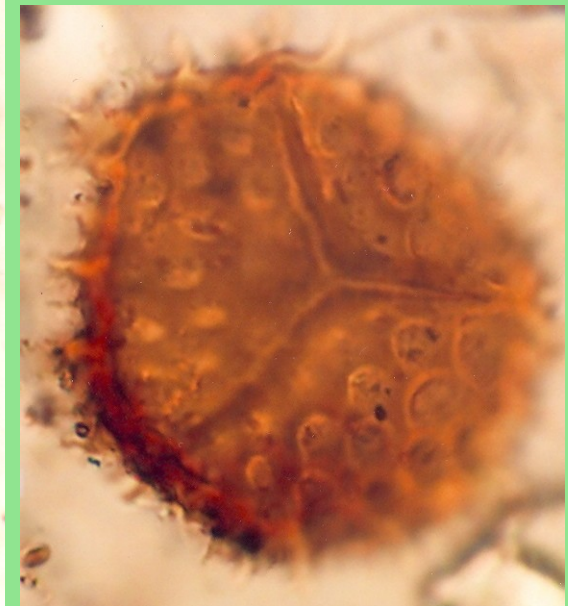
Anthoceros punctatus



Chotěbuz, 60 cm

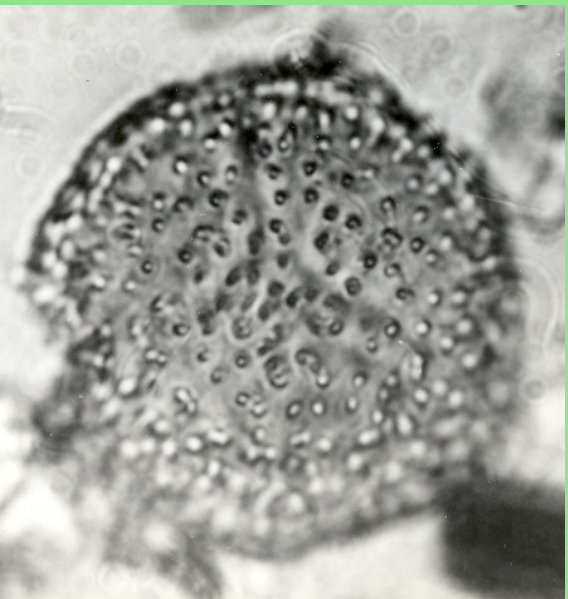


Chotěbuz, 60 cm

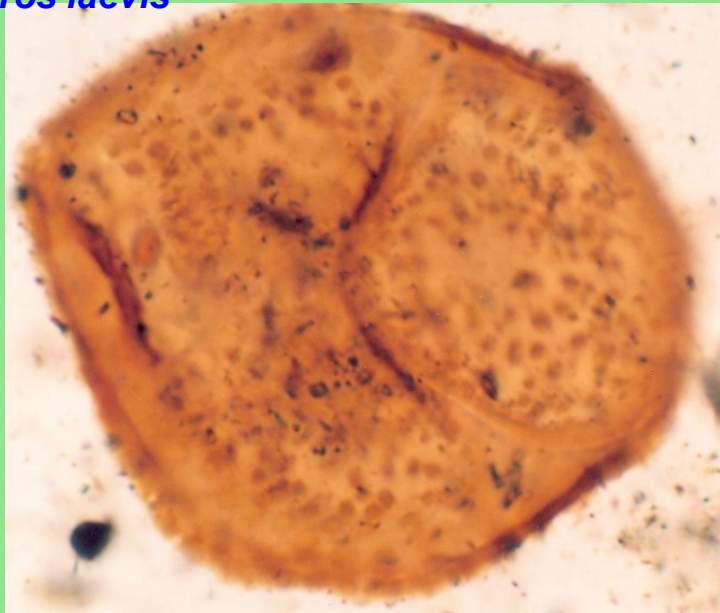


Chotěbuz, P10

Anthoceros laevis



Prachatice



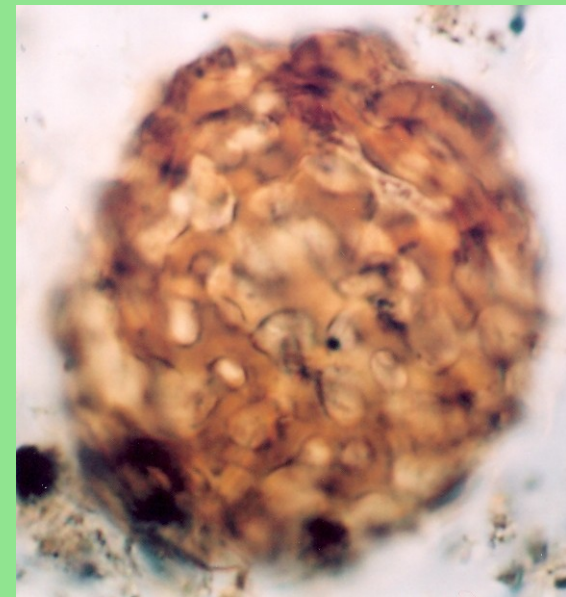
Chotěbuz, 60 cm

Anthoceros punctatus

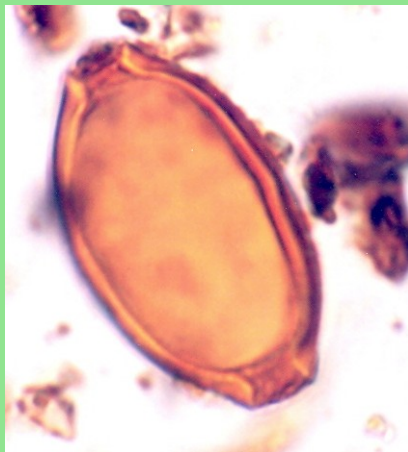


Vlkaneč – from clay-brick

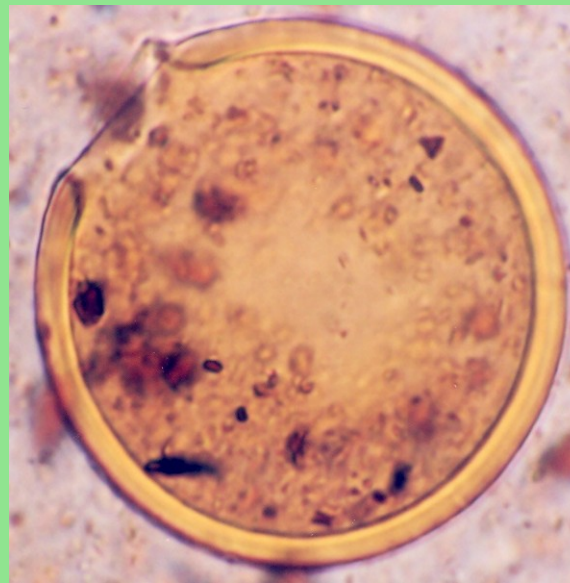
Vermes



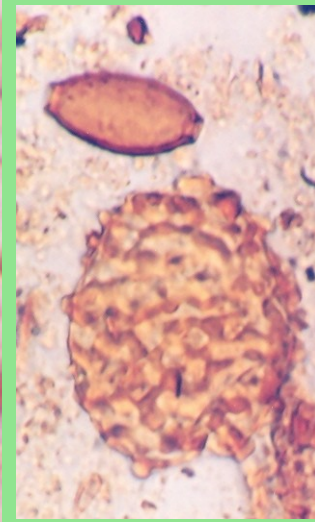
Ascaris cf. *lubricoides*,
Opava, Drůbeží trh



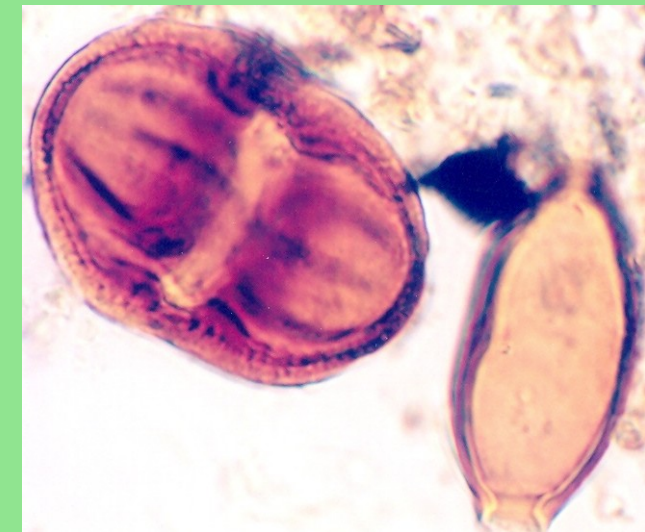
Trichuris cf. *trichiura*,
Brno, Dornych



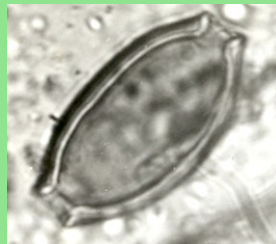
Vermes? Brno, Dornych



Trichuris and *Ascaris*,
Opava



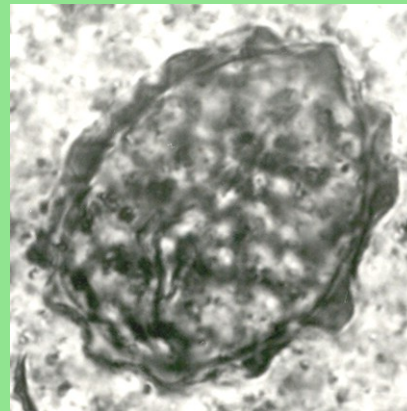
Centaurea cyanus and *Trichuris*,
Opava



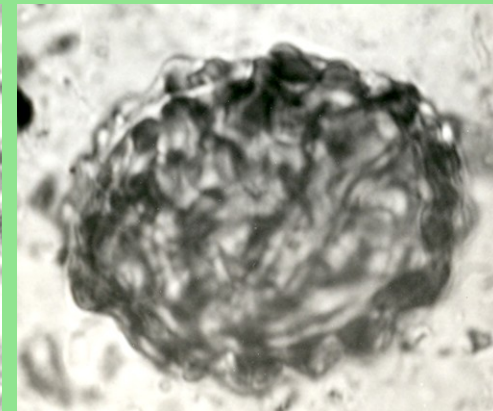
Trichuris cf. *trichiura*
Nymburk



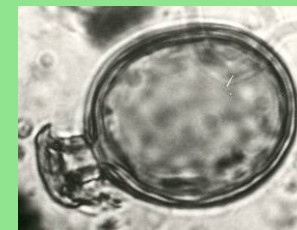
Trichuris cf. *trichiura*
Praha



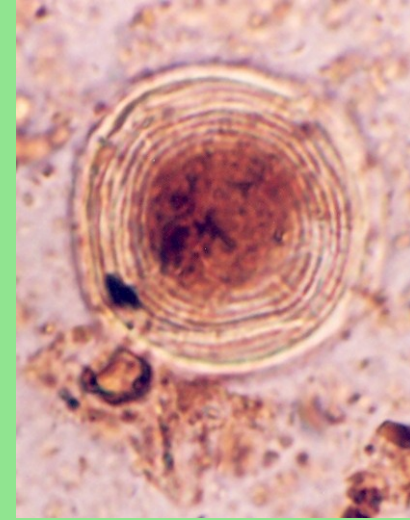
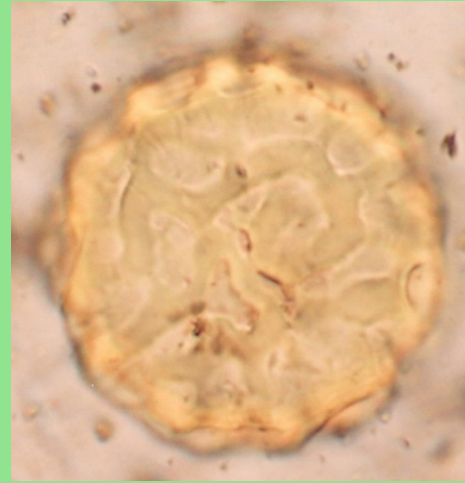
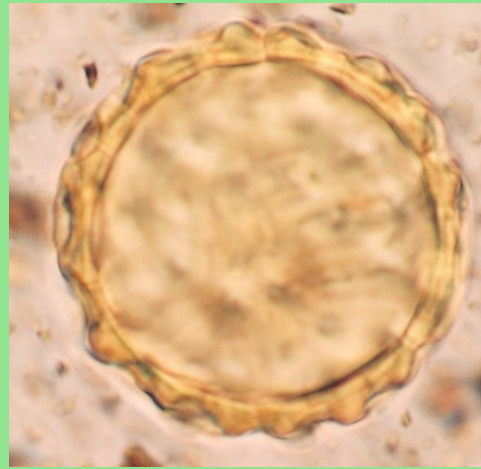
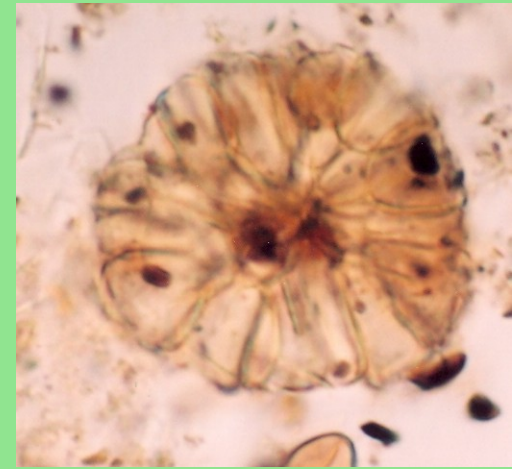
Ascaris, Kadaň



Vermes



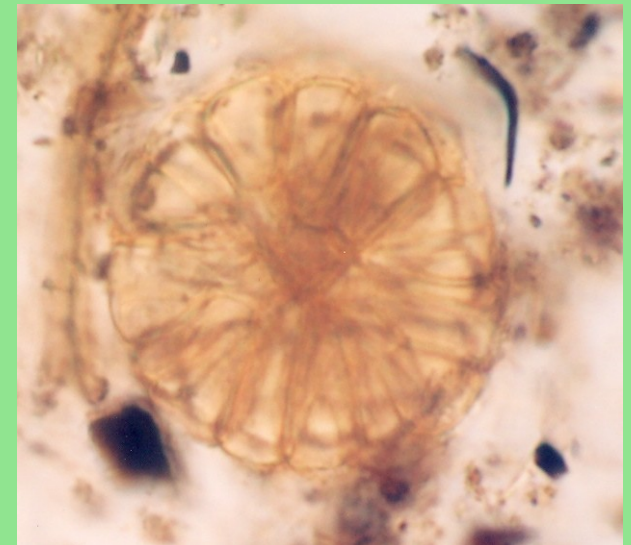
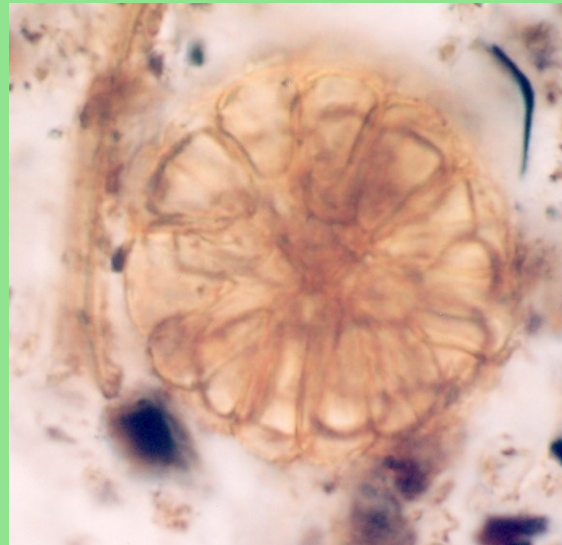
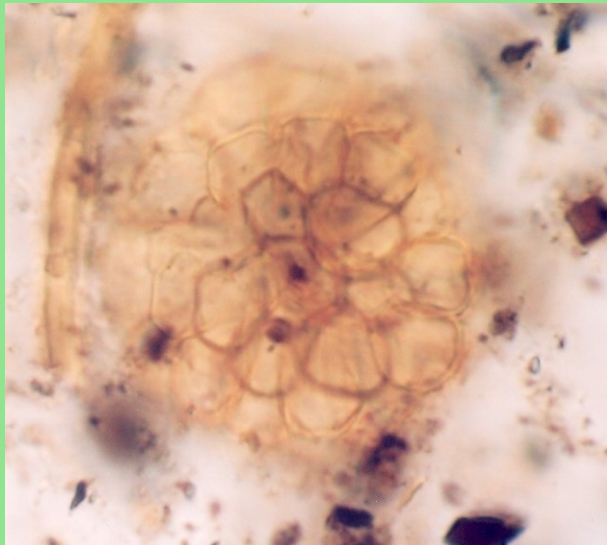
Non-Pollen-Palynomorphs



ZOO?, Praha, Náměstí Republiky

Vermes? Krkonoše (long distance transport 2007)

ZOO?, Brno, Dornych



ZOO?, Praha, Náměstí Republiky

CONCLUSION

The following was determined:

1 – Pollen and other palynomorphes do occur in the fill of different archaeological structures – it means – in cesspits of various function, in wells, cisterns, water ditches, ponds and soil layers of the medieval ages.

2 – It is possible to provide palaeoreconstruction of the environment for Middle Ages on the basis of pollen-analytical research when we have quantitative and qualitative enough pollen-analytical informations.

3 – Thanks to big number of pollen-analytical results from Middle Ages it was possible to distinguish pollen spectra of Early and High Middle Ages – specially from the large medieval towns.

4 – Interesting informations about the history of some plants serve botanists like as information about finds of intestinal parasites serve zoologists.

5 – For historians and other specialists are interesting of course pollen-analytical informations about origin and function some mysterious structures (e.g. Kounovské řady – Raw), like a results of pollen analyses of dust from old medieval books.

6 – Final conclusion: results of pollen analyses are usefull for many specialists of biotic and abiotic disciplins.

Thank you for your attention!

