

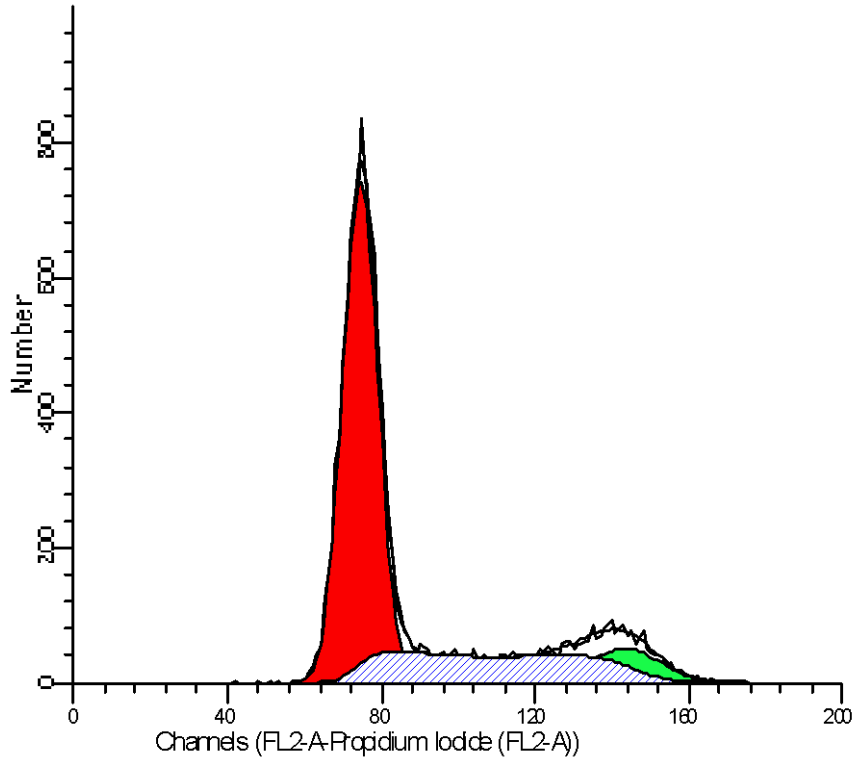
File analyzed: DU145 #43
 Date analyzed: 21-Dec-2011
 Model: 1nA0n_DSf
 Analysis type: Manual analysis

Ploidy Mode: First cycle is diploid

Diploid: 100.00 %
 Dip G1: 90.79 % at 71.26
 Dip G2: 6.18 % at 137.66
 Dip S: 3.04 % G2/G1: 1.93
 %CV: 5.37

Total S-Phase: 3.04 %
 Total B.A.D.: 0.25 % no debris

Debris: %
 Aggregates: 0.90 %
 Modeled events: 13611
 All cycle events: 13488
 Cycle events per channel: 200
 RCS: 1.376



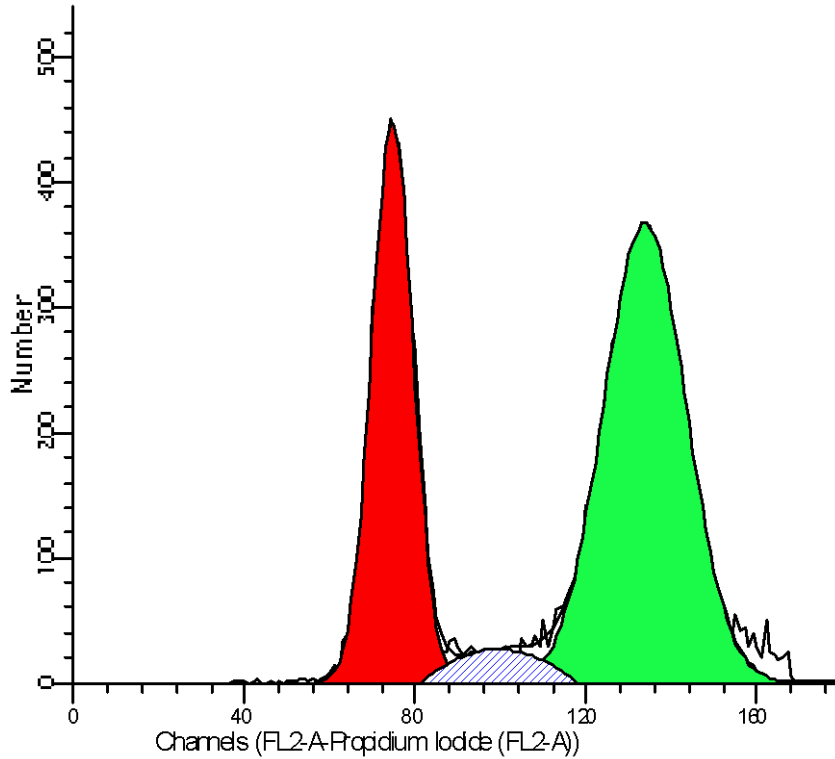
File analyzed: LNCaP #16
 Date analyzed: 21-Dec-2011
 Model: 1nA0n_DSF
 Analysis type: Manual analysis

Ploidy Mode: First cycle is diploid

Diploid: 100.00 %
 Dip G1: 67.14 % at 74.46
 Dip G2: 9.03 % at 143.25
 Dip S: 23.83 % G2/G1: 1.92
 %CV: 6.18

Total S-Phase: 23.83 %
 Total B.A.D.: 0.00 % no debris

Debris: %
 Aggregates: 0.09 %
 Modeled events: 12858
 All cycle events: 12846
 Cycle events per channel: 184
 RCS: 0.654



File analyzed: PC3 #58
 Date analyzed: 21-Dec-2011
 Model: 1nA0n_DSf
 Analysis type: Manual analysis

Ploidy Mode: First cycle is diploid

Diploid: 100.00 %
 Dip G1: 37.90 % at 74.52
 Dip G2: 62.06 % at 133.67
 Dip S: 0.04 % G2/G1: 1.79
 %CV: 6.48

Total S-Phase: 0.04 %
 Total B.A.D.: 0.00 % no debris

Debris: %
 Aggregates: 0.46 %
 Modeled events: 14407
 All cycle events: 14341
 Cycle events per channel: 238
 RCS: 2.221