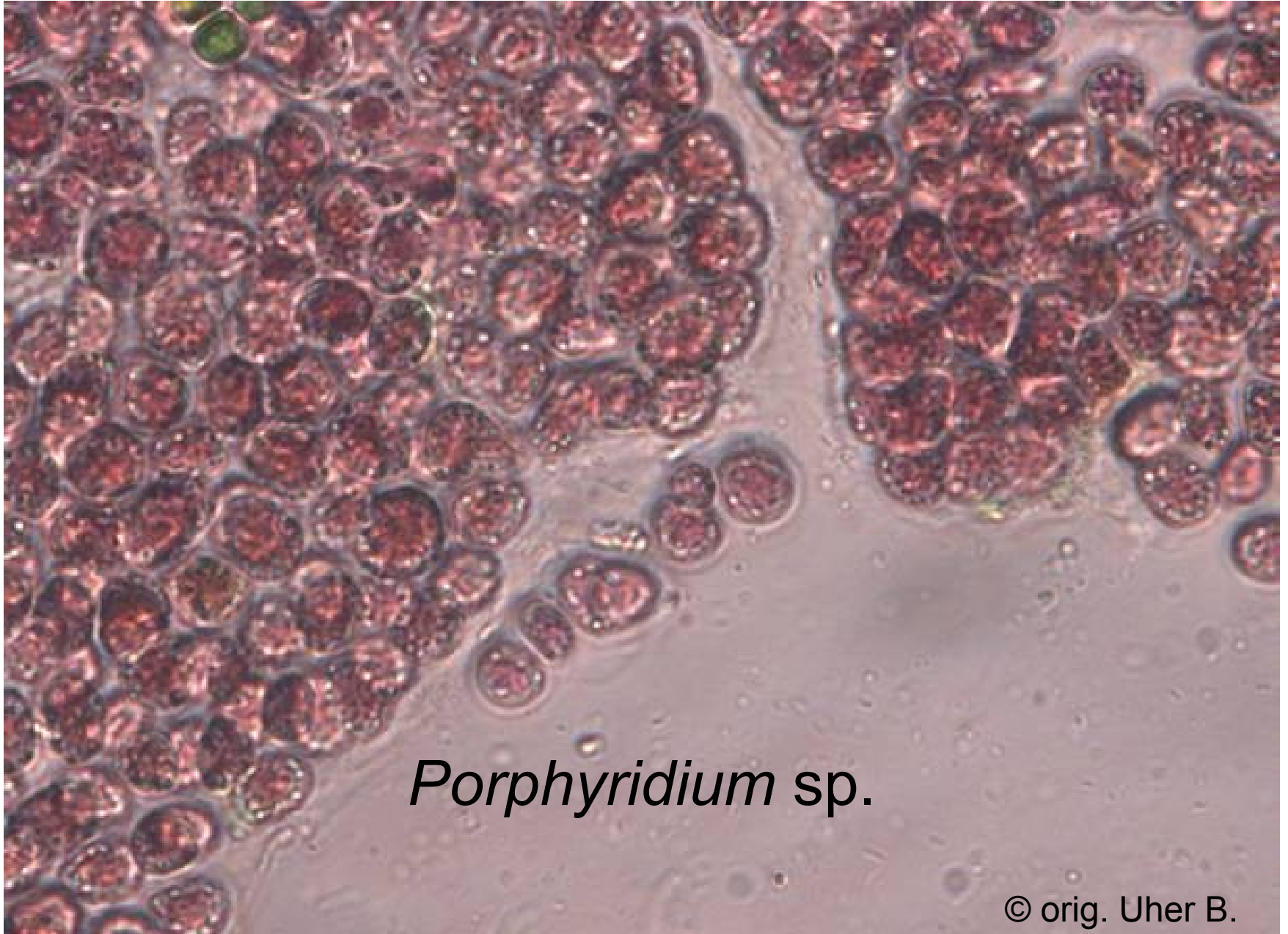


Odd.: Rhodophyta Třída: Bangiophyceae Řád: Bangiales



*Porphyridium* sp.

A microscopic image showing numerous individual cells of Porphyridium sp. The cells are roughly oval or circular in shape, with a distinct, dark, multi-layered outer boundary. The interior of each cell is filled with a dense, reddish-brown granular material, likely representing the photosynthetic apparatus or storage products. The cells are scattered across the field of view, with some appearing more sharply in focus than others. The background is a light, slightly textured, yellowish-brown color.

*Porphyridium* sp.