

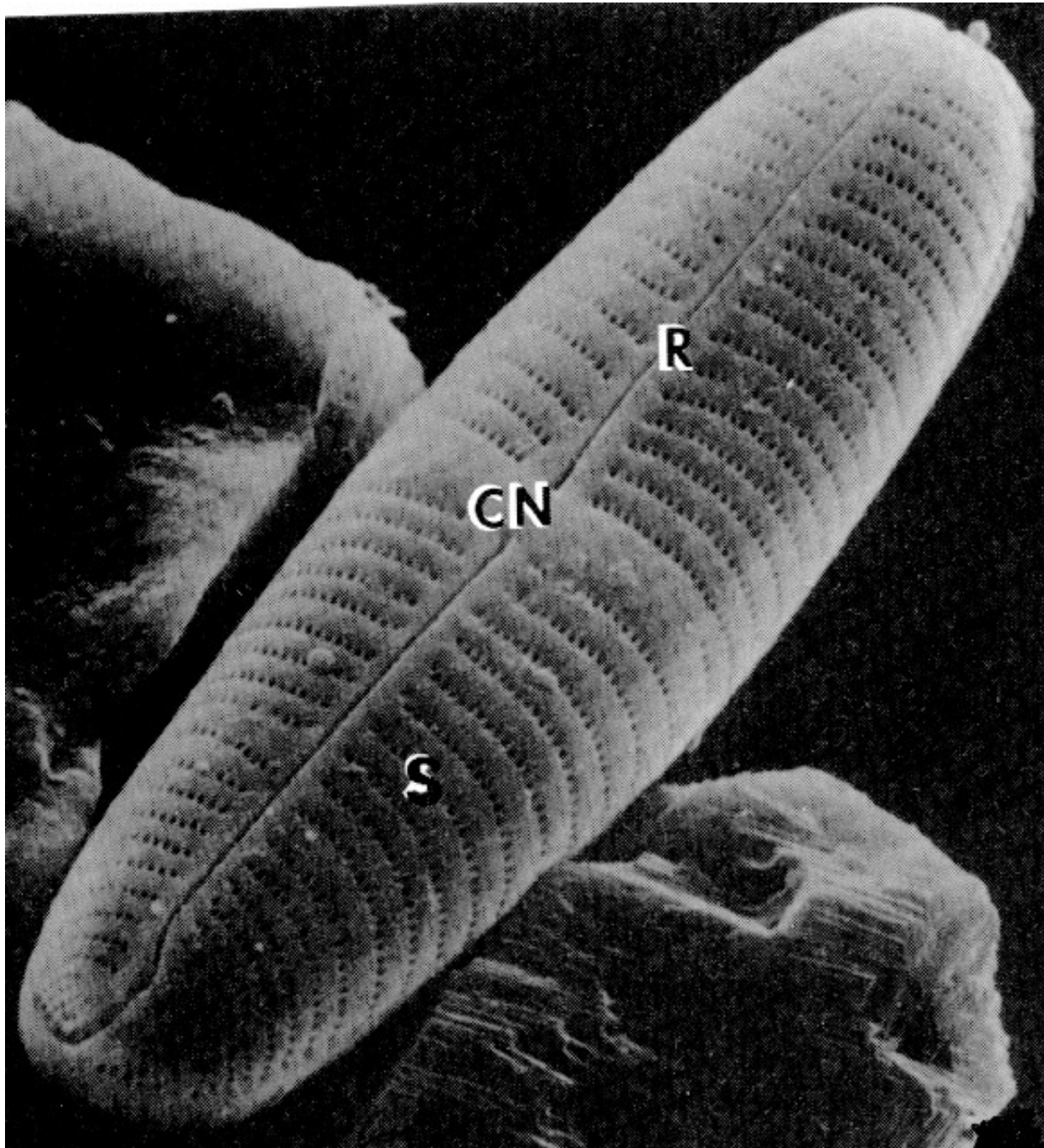
# CVIČENÍ ROZSIVKY

Oddělení: Heterokontophyta

Třída: Bacillariophyceae

# Třída: Rozsivky- Bacillariophyceae

- Dvoudílná křemitá frustula
- Polymer  $\text{SiO}_2$
- Hnědé chloroplasty
- Chlorofyly a,  $c_1, c_2, c_3$
- Xanthofyly
- Olej
- Bičík - gamety
- Penátní rozsivky
- Centrické rozsivky
- Raphe
- Epithéka, hypothéka
- Bioindikátory kvality vody
- Diatomit - křemelina



# Penátní rozsivka (SEM)

R - raphe

CN - centrální nodulus

S - striae

hypothéka

epithéka

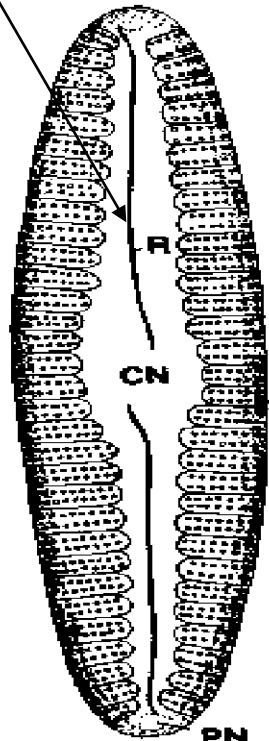
hypopleura

epipleura

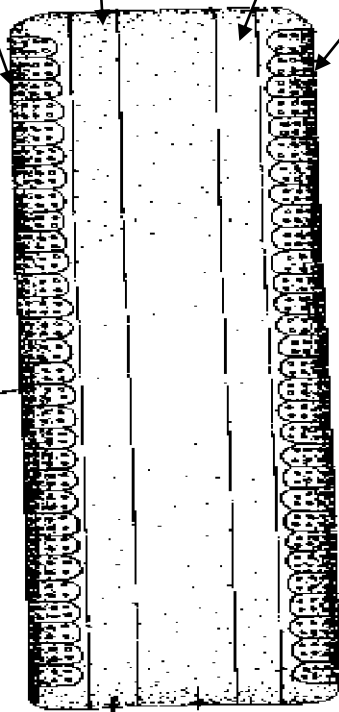
epivalva

hypoalva

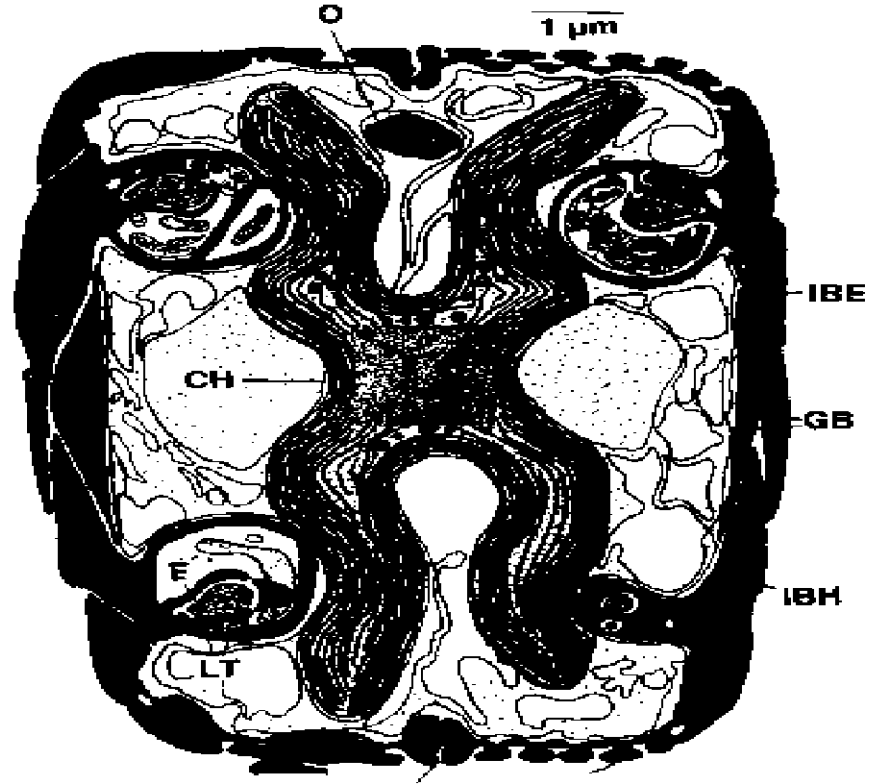
raphe



(a)



(b)

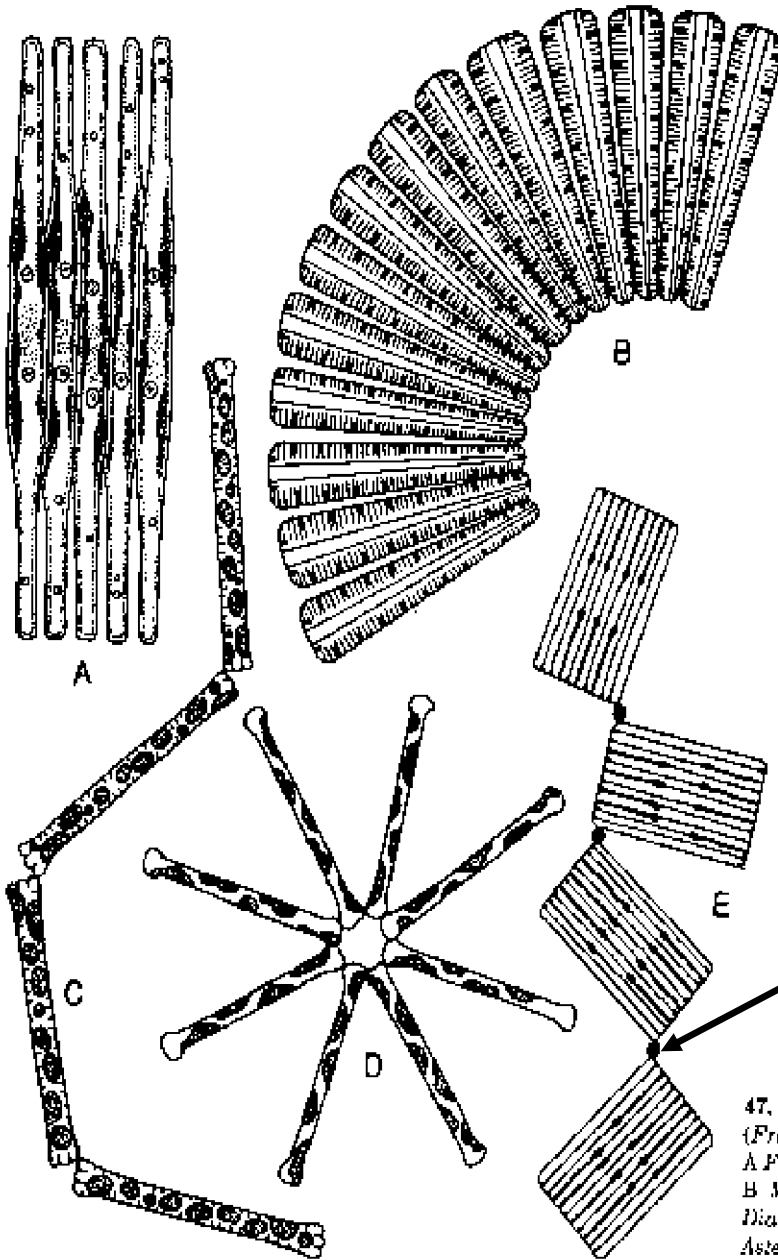


(c)

valvální  
pohled

pleurální  
pohled

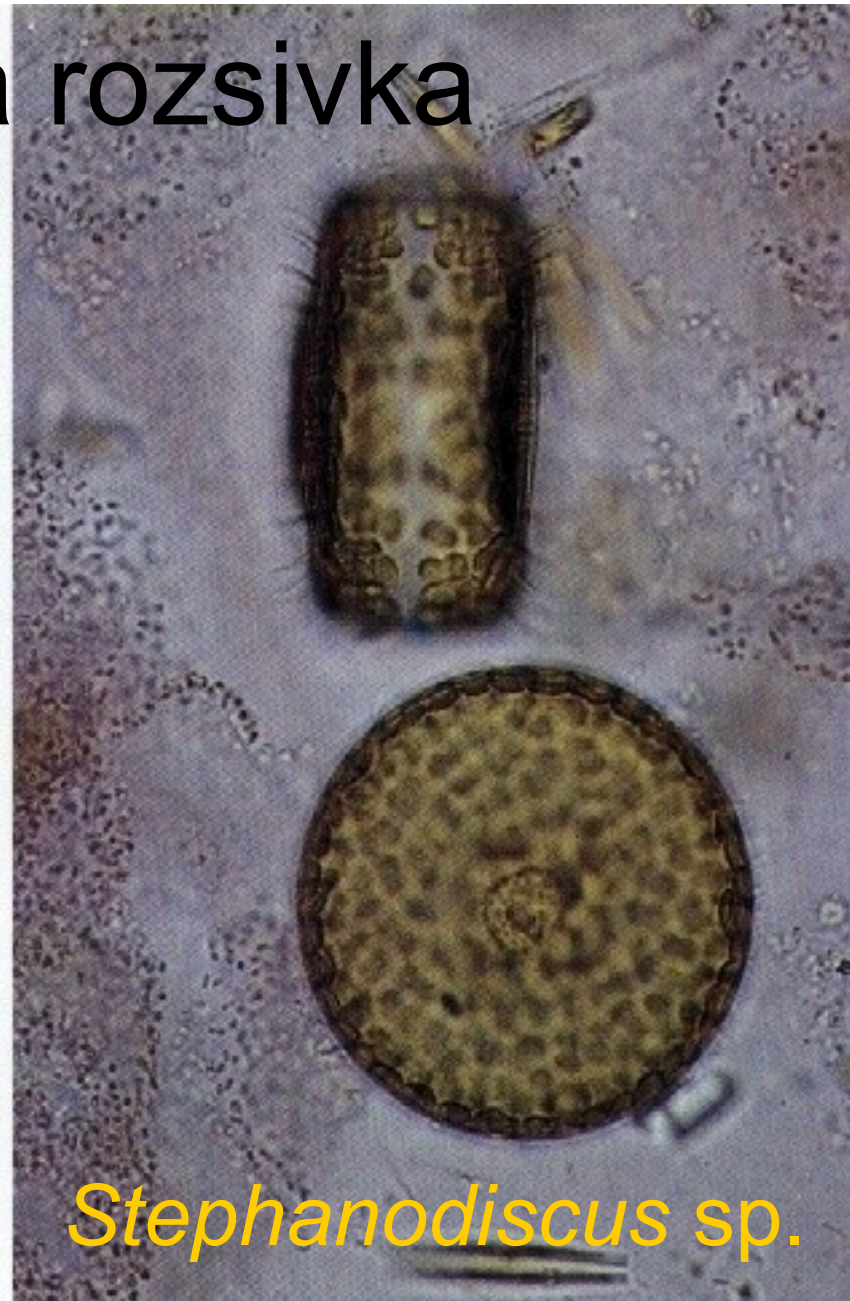
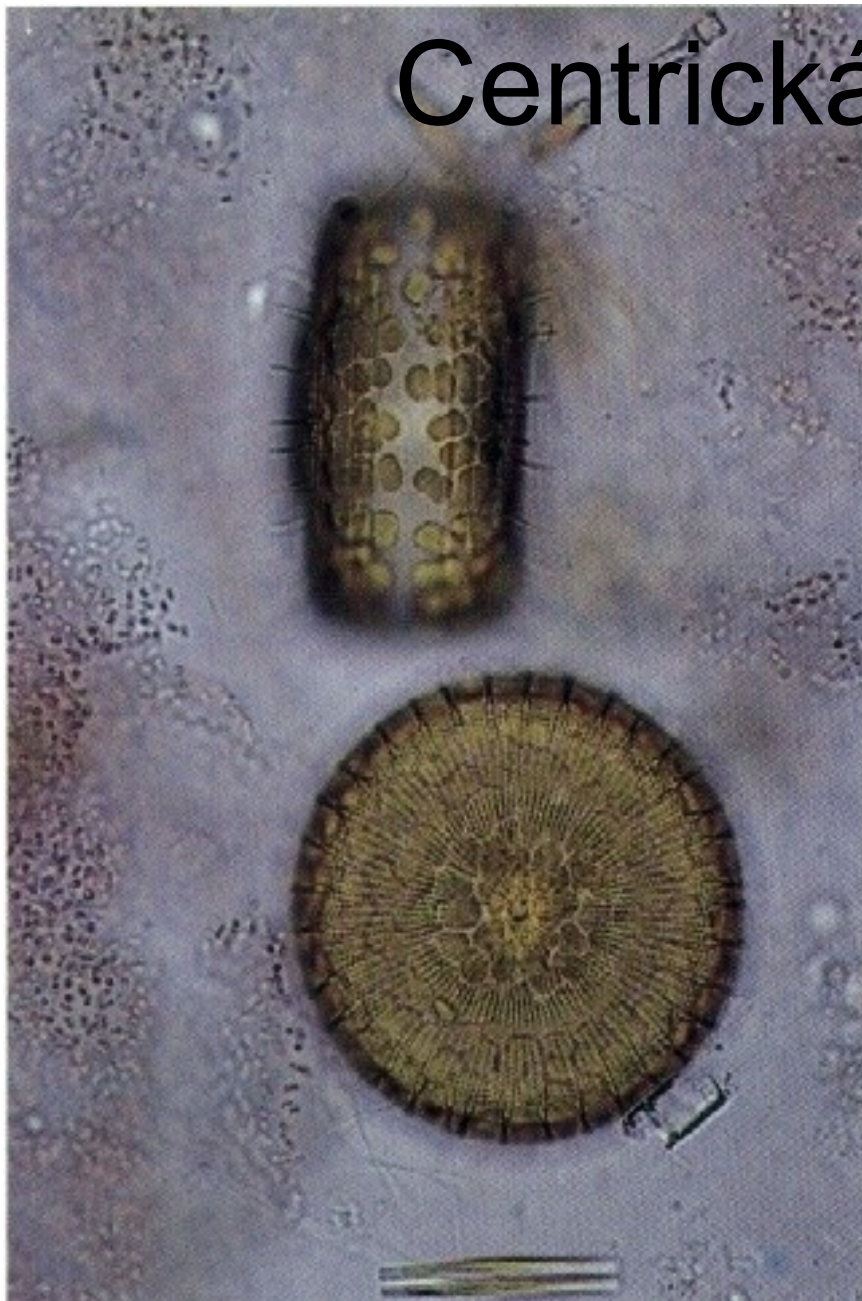
# příklady kolonií penátních rozsivek



slizový polštářek

47. Sladkovodní rozsivky  
(Fragillariophyceidae).  
A *Fragillaria crotonensis*;  
B *Meridion circulare*; C  
*Diatoma elongatum*; D  
*Asterionella formosa*; E  
*Teblaria floridana*.

# Centrická rozsivka



*Stephanodiscus* sp.

Odd.: Heterokontophyta Třída: Bacillariophyceae  
Podtřída: Coscinodiscophycidae Řád: Coscinodiscales

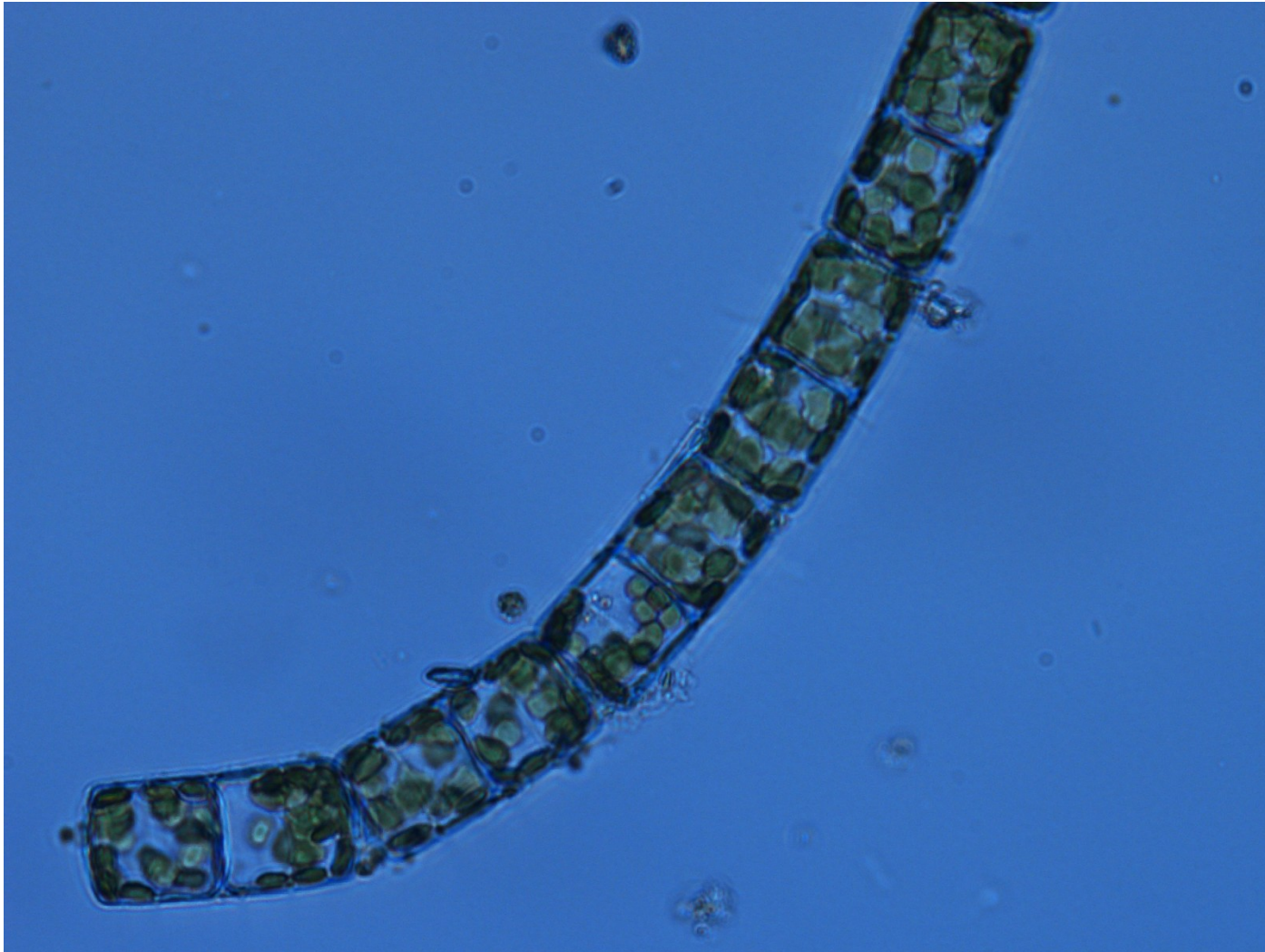
*Melosira* sp.

10  $\mu\text{m}$



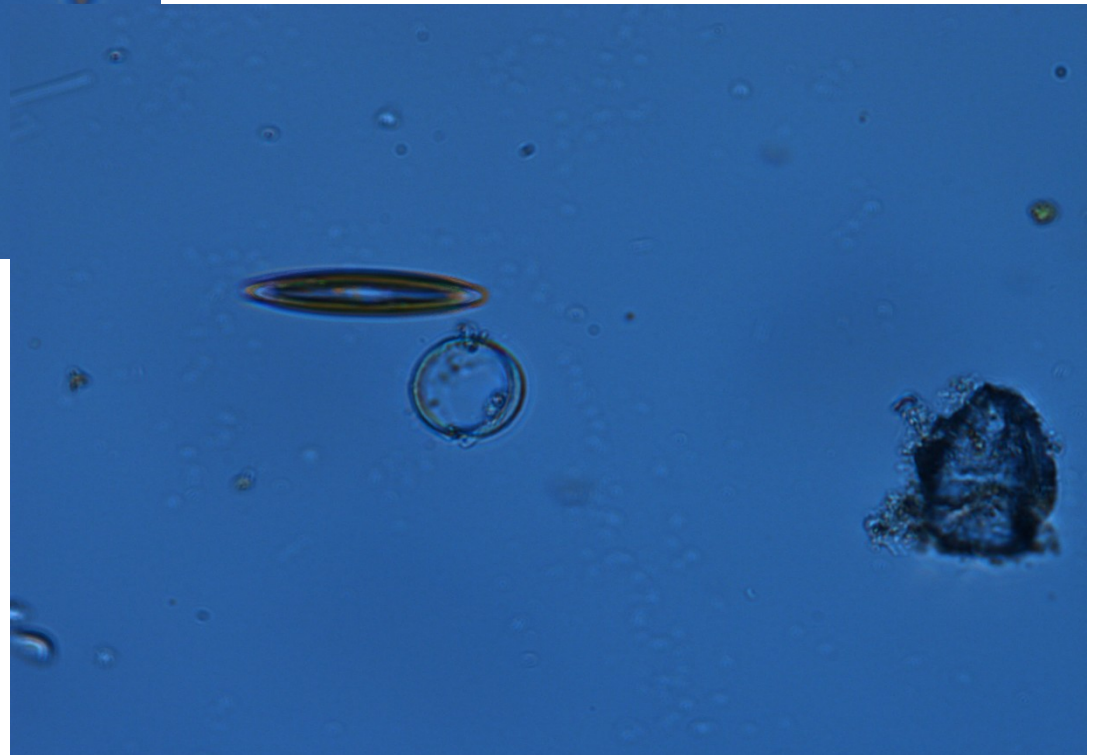
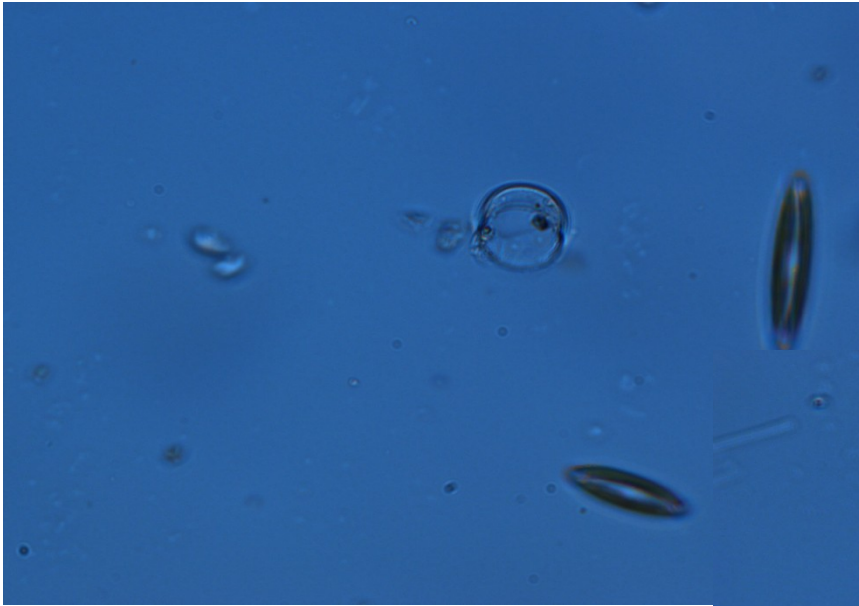
© orig. Uher B.

*Melosira* (centrická rozsvivka, pleurální  
pohled, kolonie)





# *Melosira*



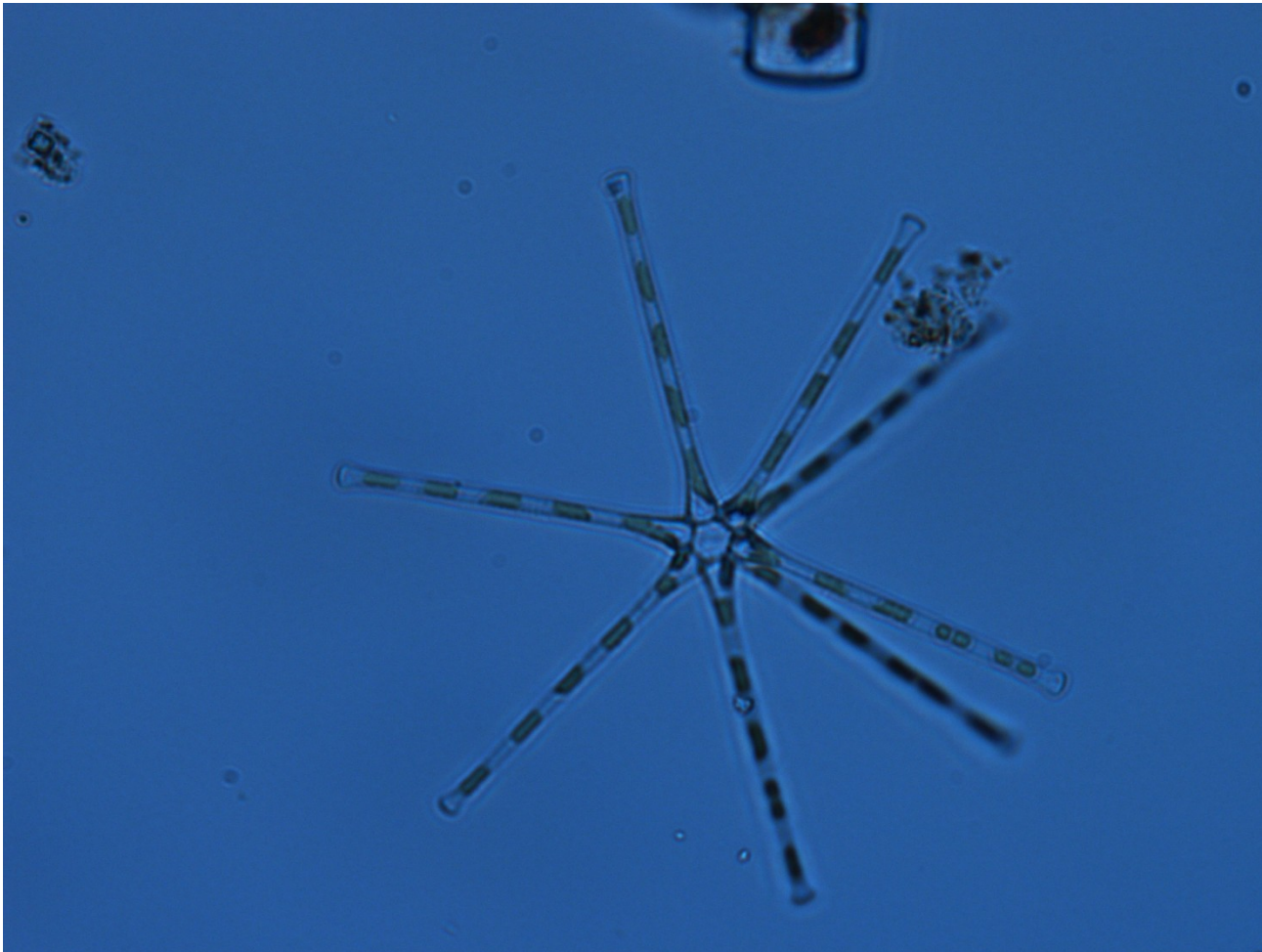
# *Asterionella*

Odd.: Heterokontophyta

Třída: Bacillariophyceae

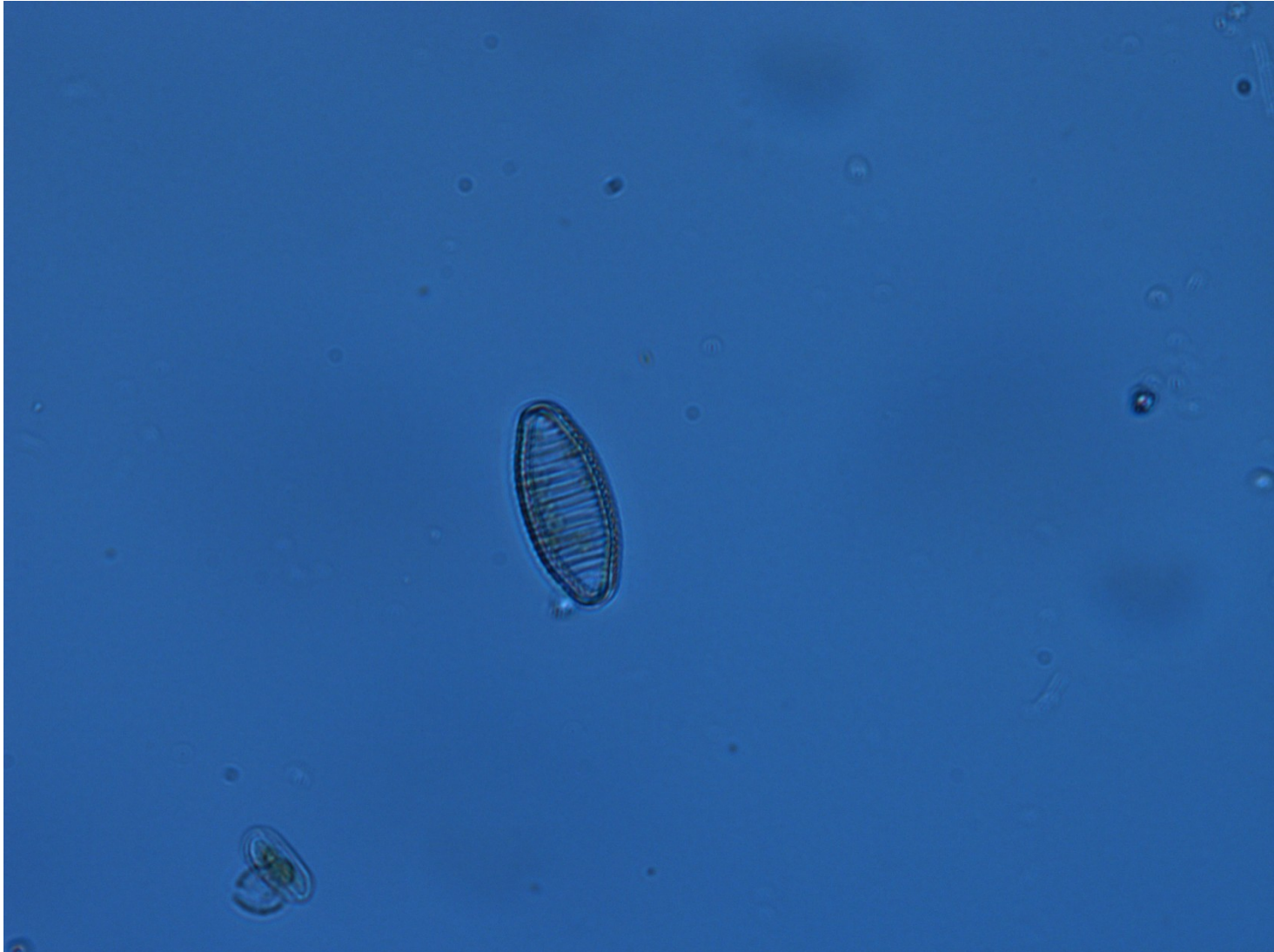
Podtřída: Fragilariophycidae

Řád: Fragilariales



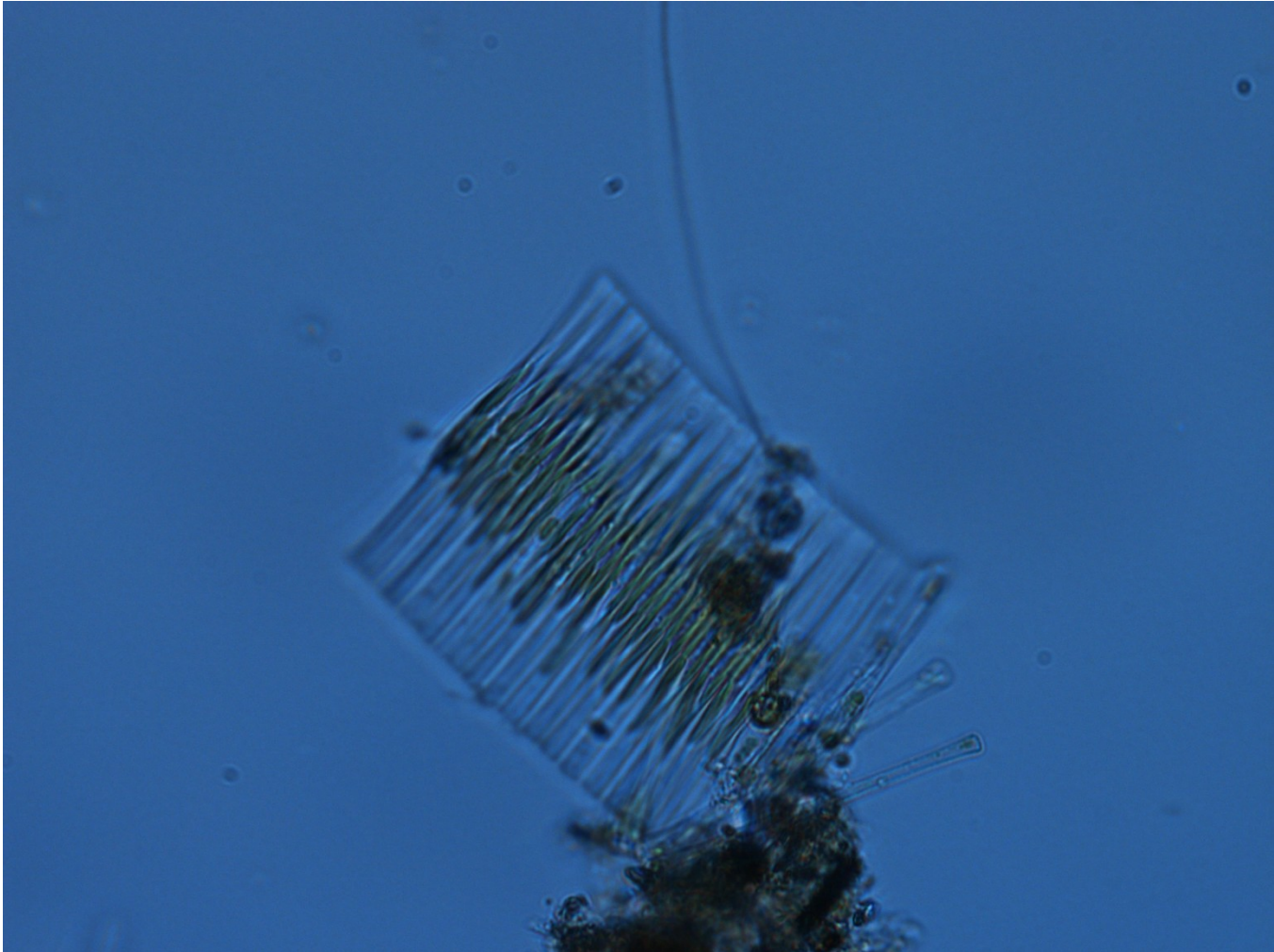
# *Diatoma*

Odd.: Heterokontophyta Třída: Bacillariophyceae  
Podtřída: Fragilariophycidae Řád: Fragilariales

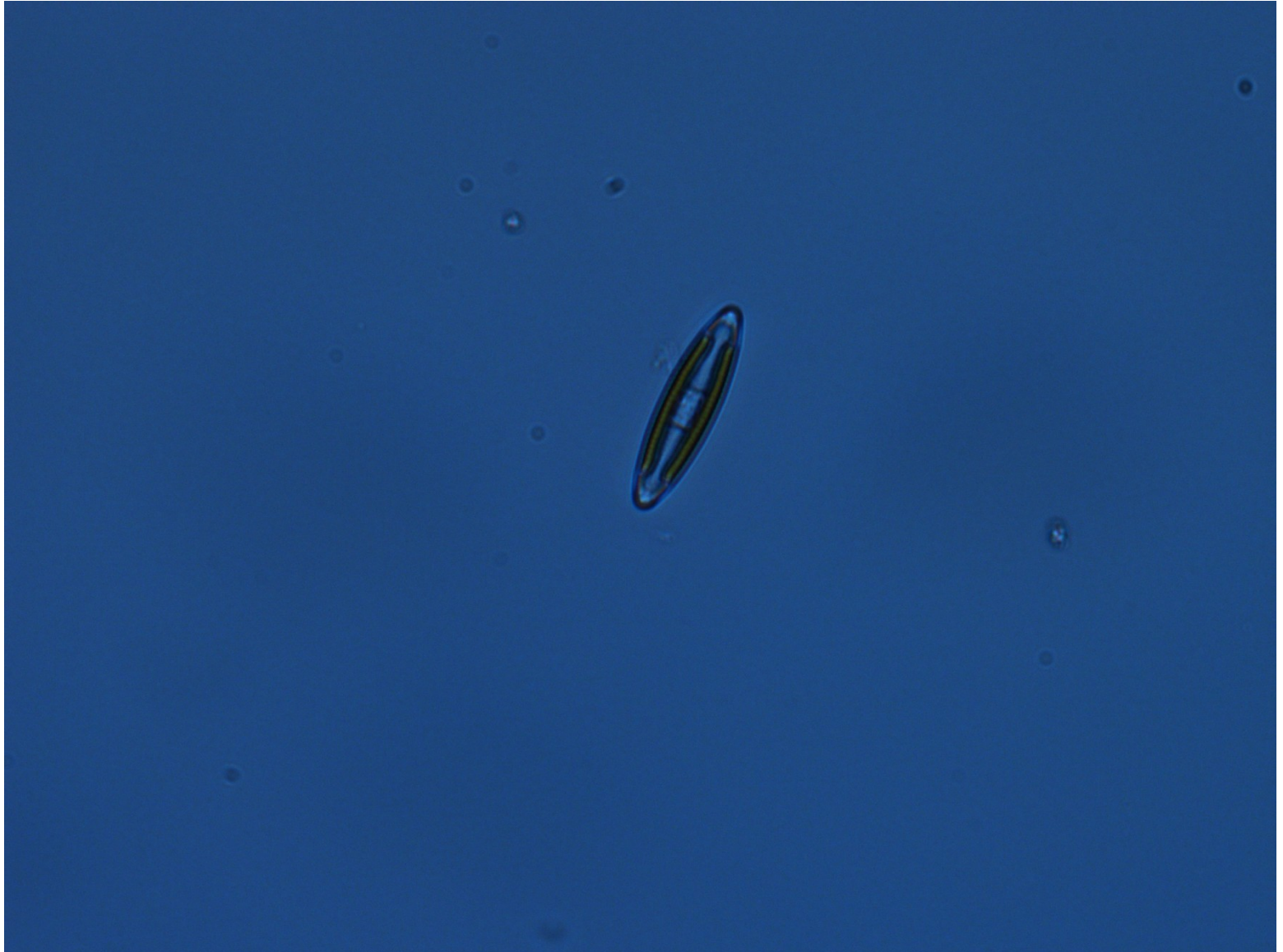


# *Fragilaria*

Odd.: Heterokontophyta Třída: Bacillariophyceae  
Podtřída: Fragilariophycidae Řád: Fragilariales



# *Navicula*

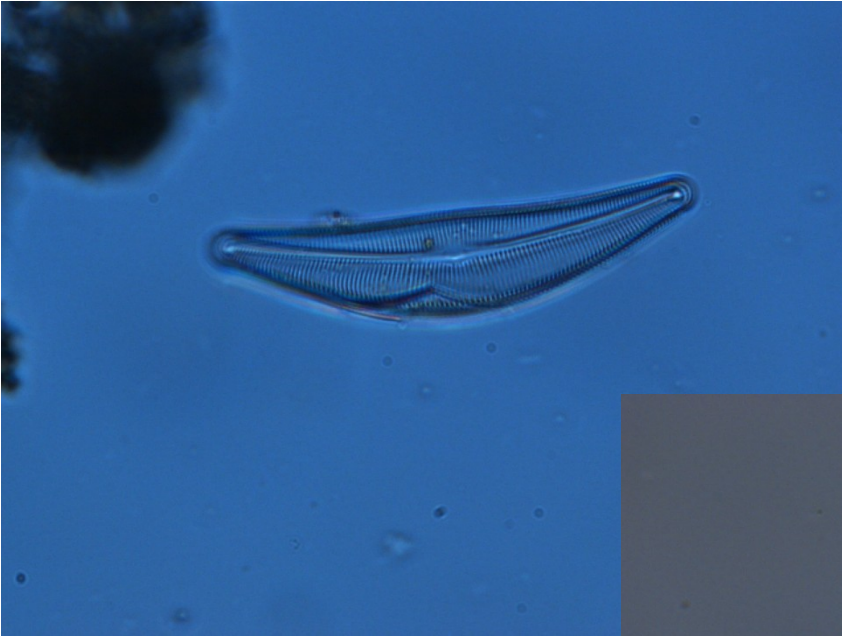


Odd.: Heterokontophyta Třída: Bacillariophyceae  
Podtřída: Bacillariophycidae Řád: Naviculales



*Navicula* sp.

# *Cymbella*

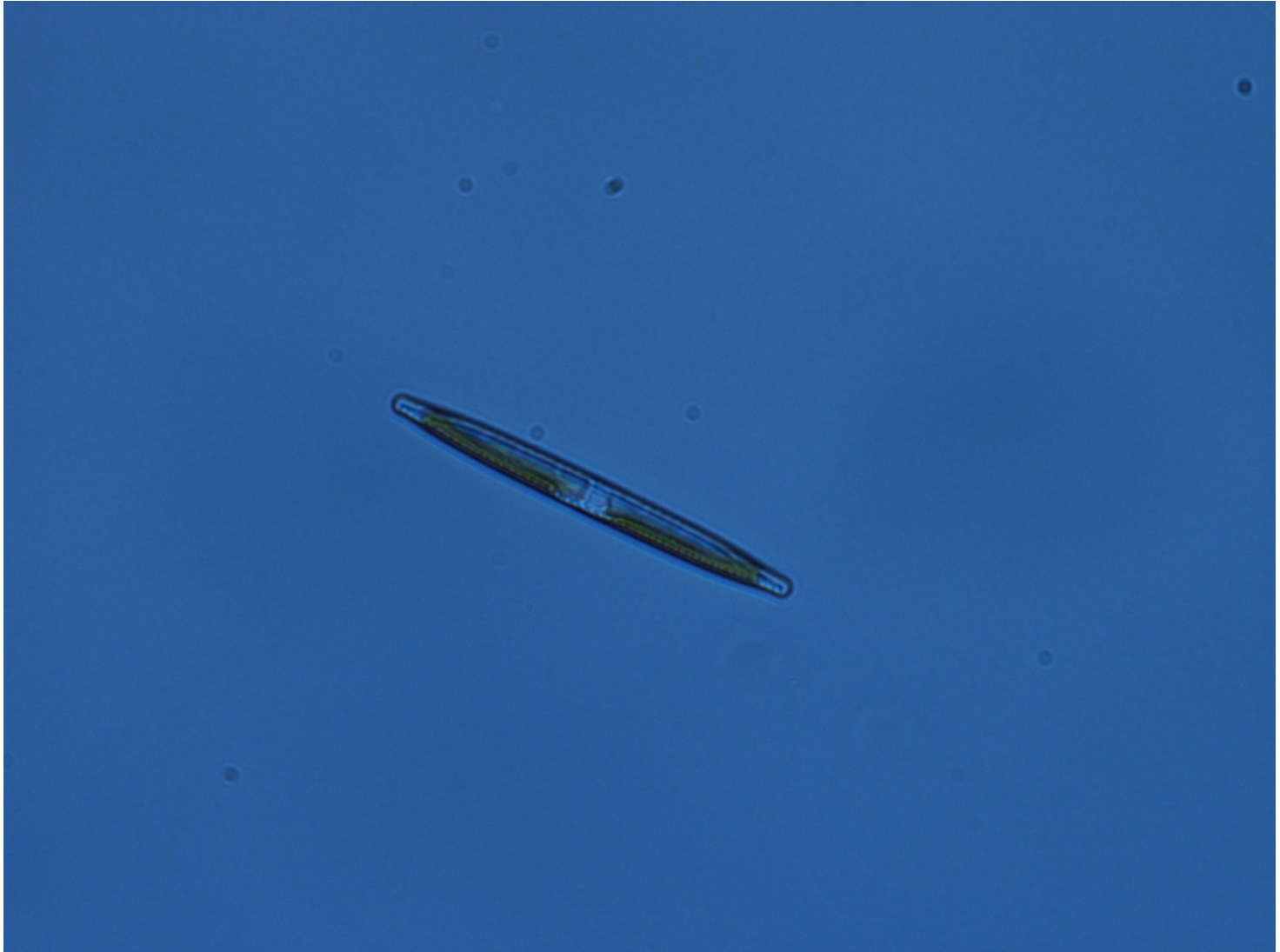


# *Nitzschia*

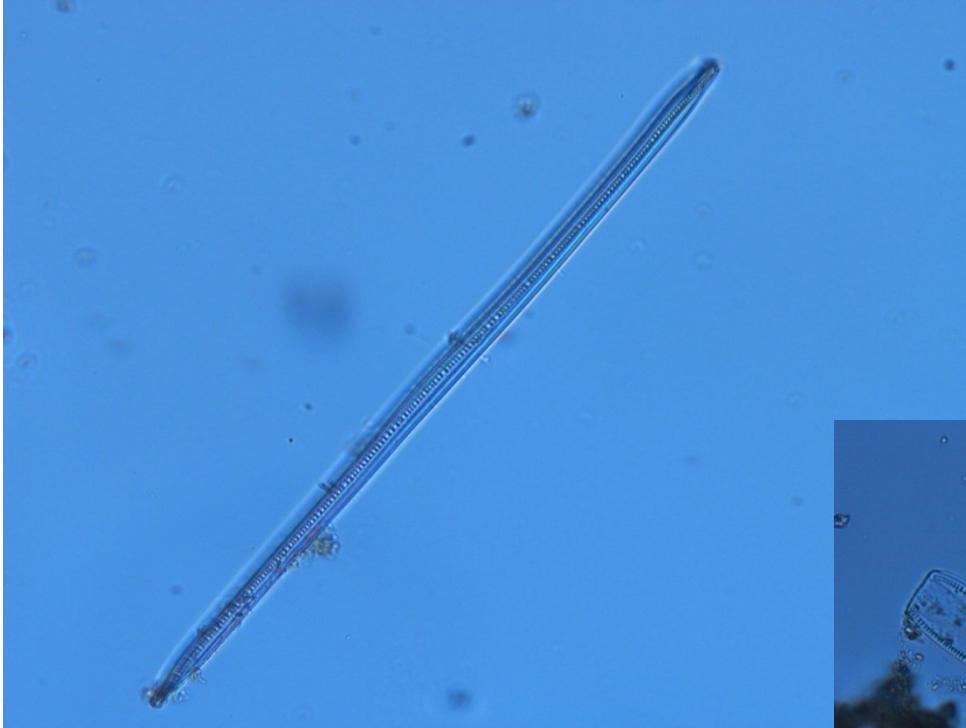




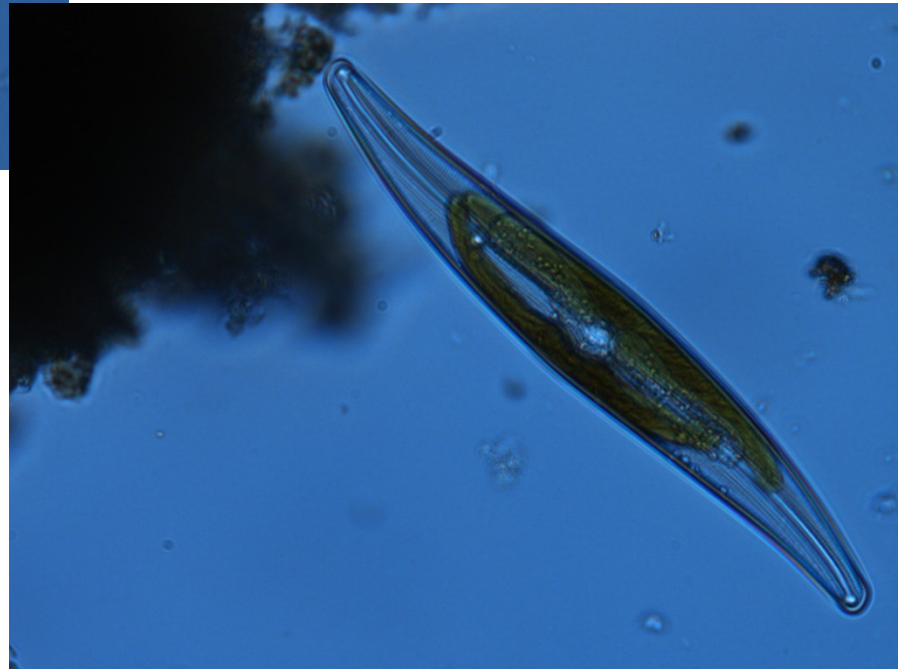
# *Nitzschia*



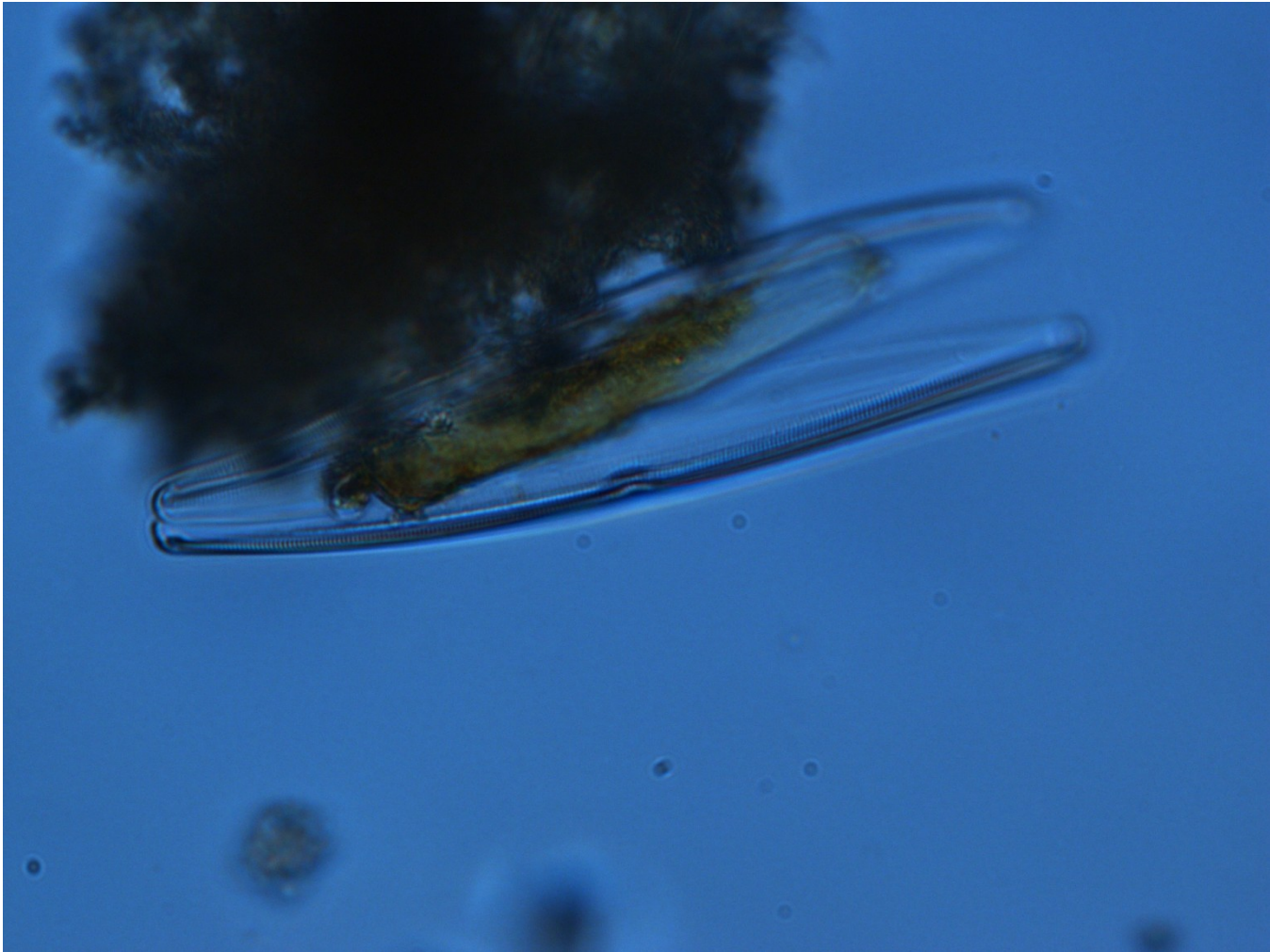
# *Nitzschia*



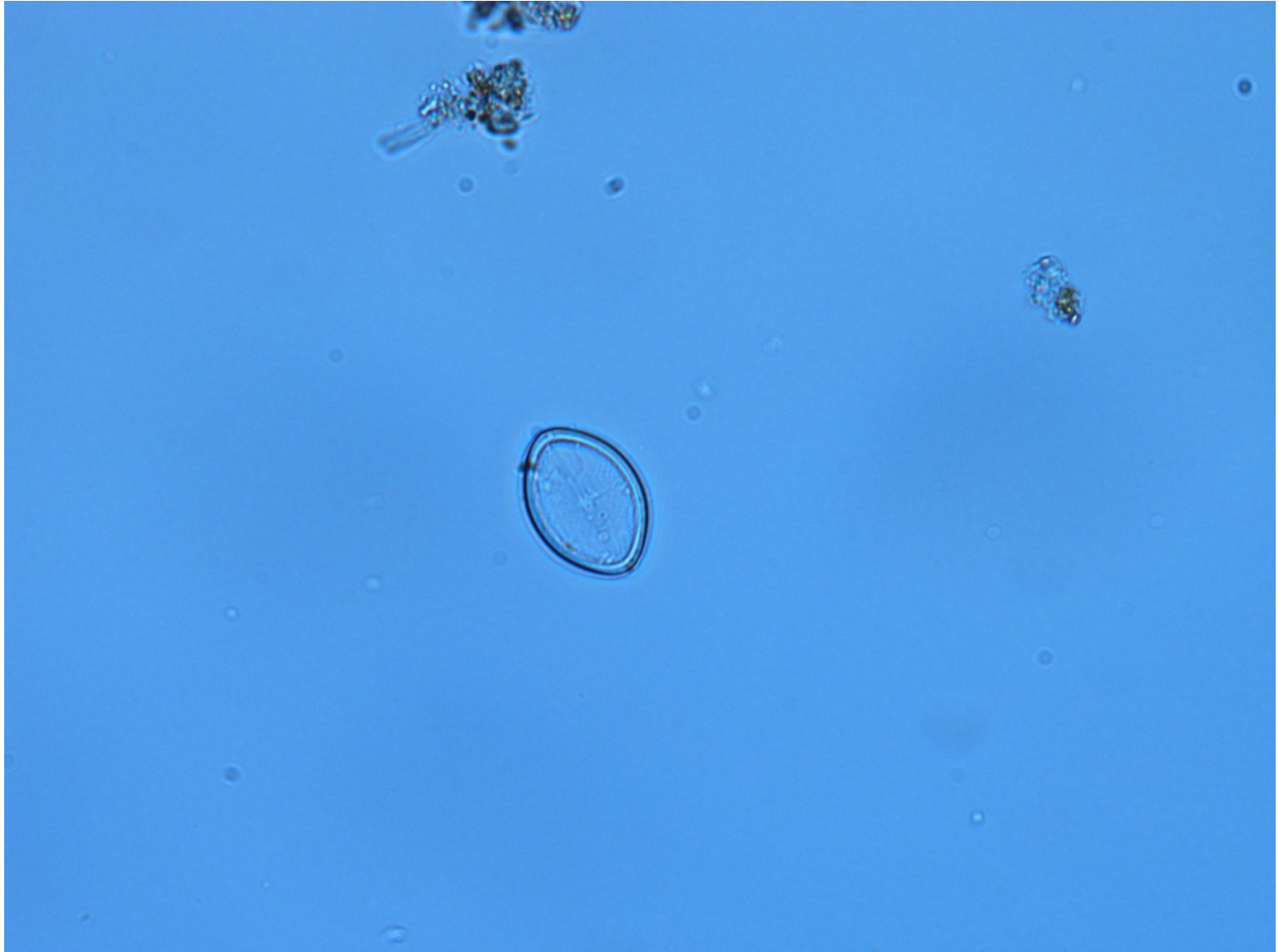
# *Gyrosigma*



# *Gyrosigma*



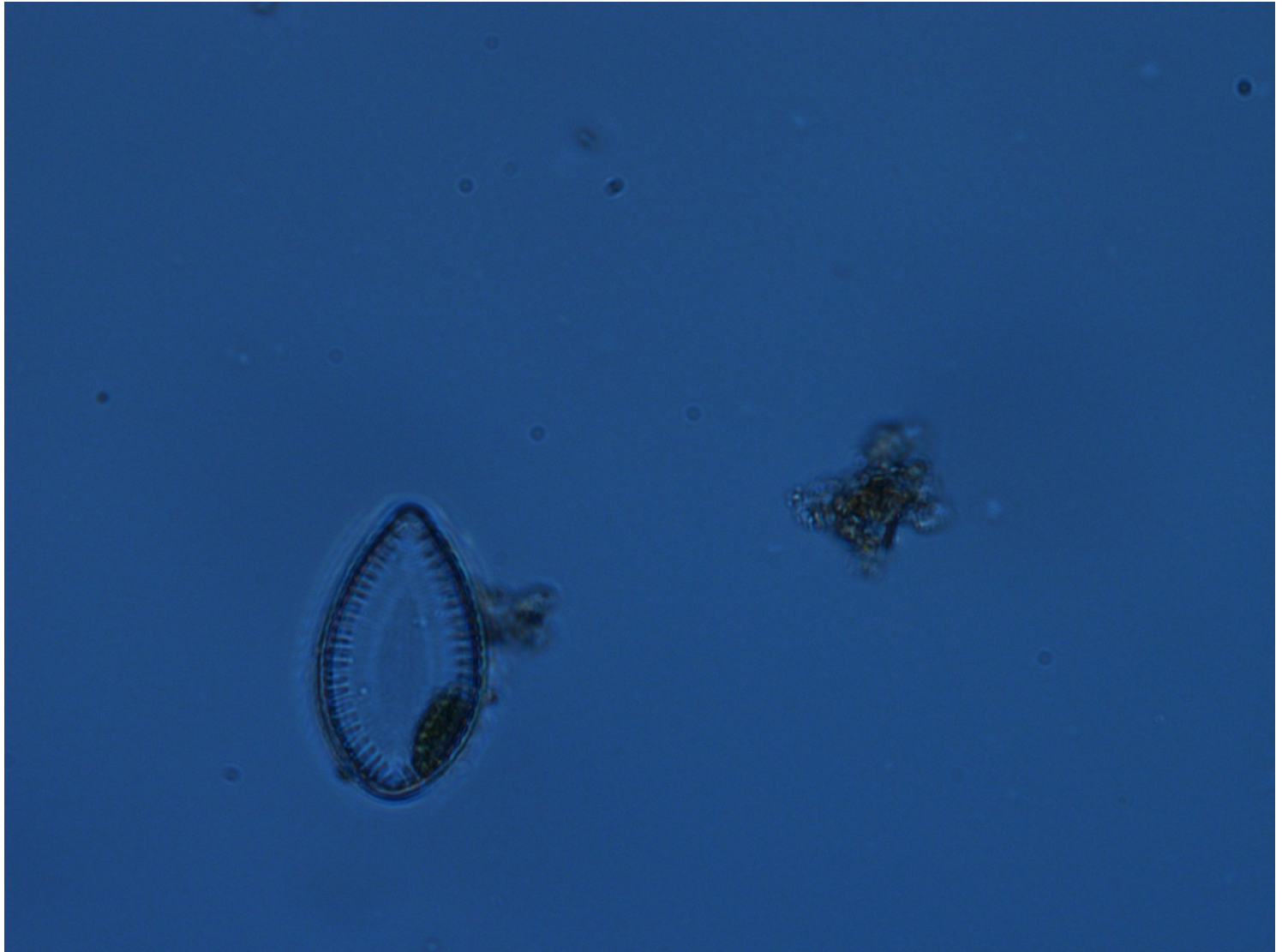
# *Cocconeis*



# *Amphora*

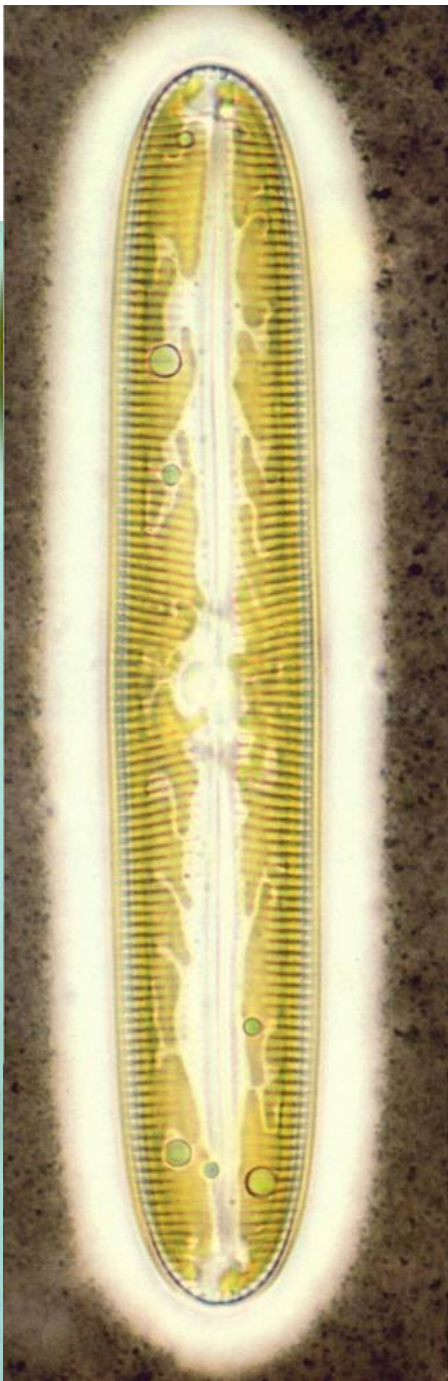


# *Surirella*



Odd.: Heterokontophyta Třída: Bacillariophyceae  
Podtřída: Bacillariophycidae Řád: Naviculales

*Pinnularia* sp.





Odd.: Heterokontophyta Třída: Bacillariophyceae  
Podtřída: Bacillariophycidae Řád: Bacillariales



*Stauroneis* sp.



Děkuji za pozornost

