
SKLÍČKOVÉ KULTURY

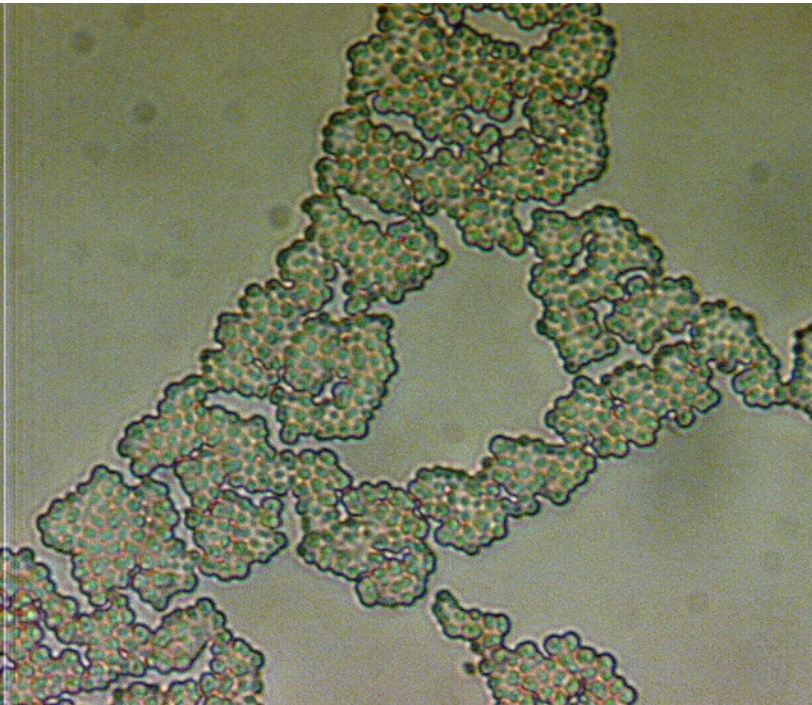
Klára Kazdová

Osnova:

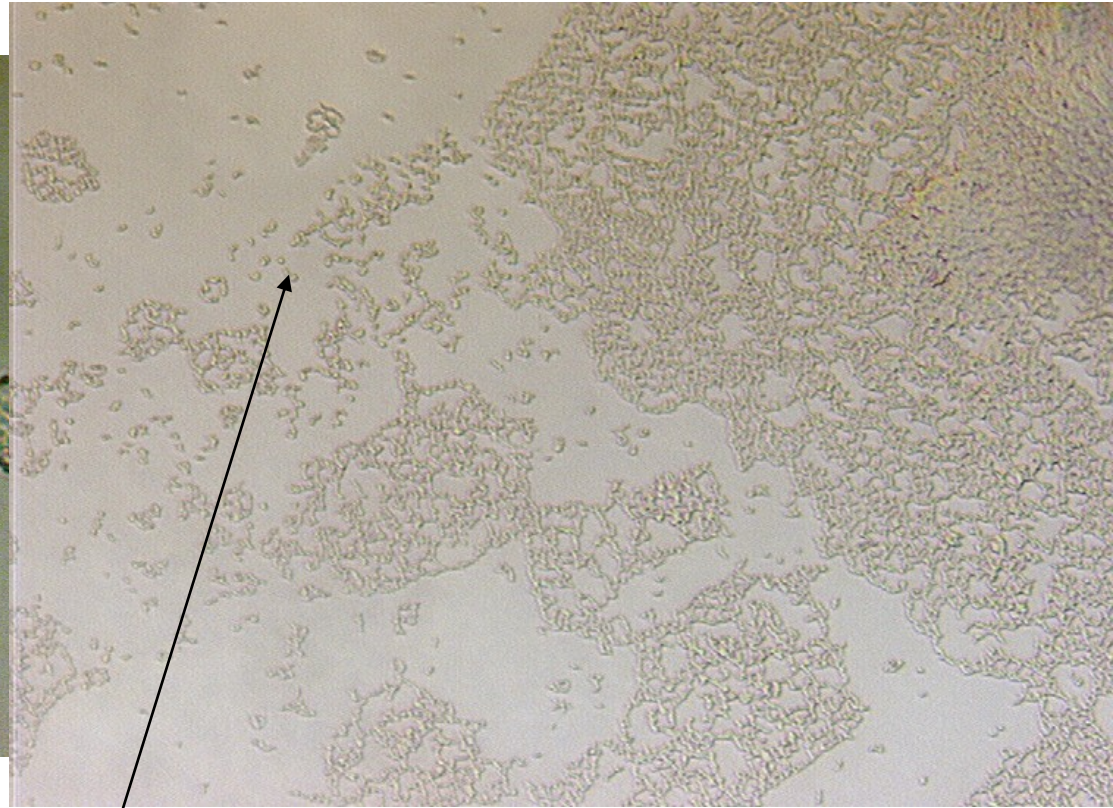
- I) Krycí sklo
- II) Podložní sklo



I) Krycí sklo



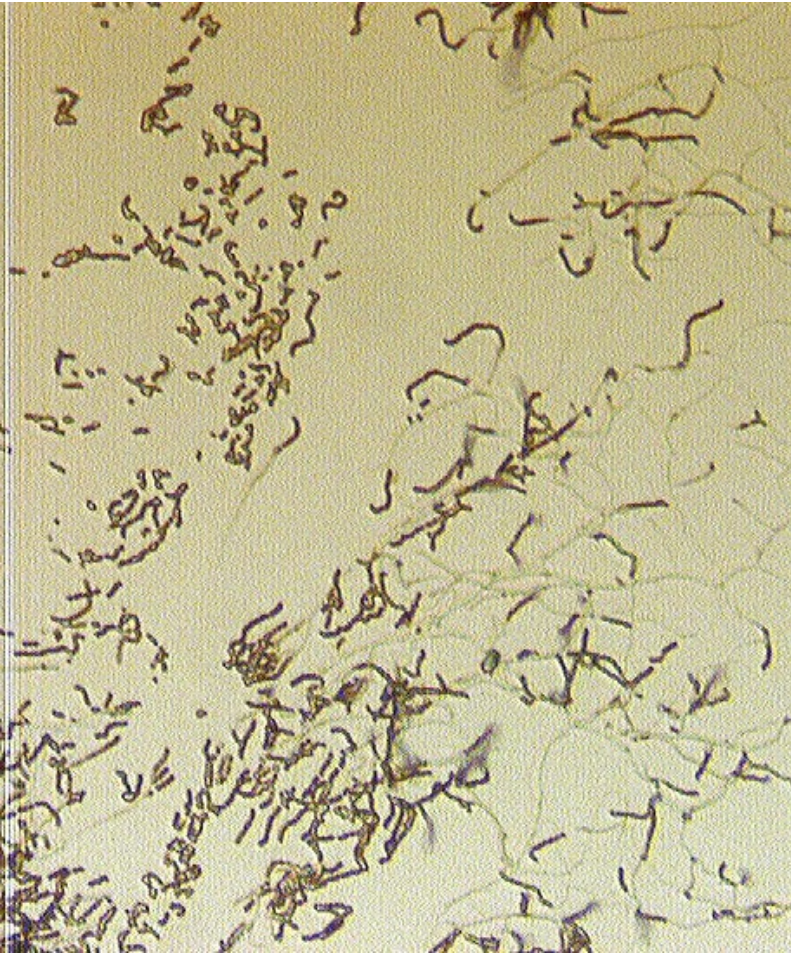
Nocardia carnea, 100x zvětšeno



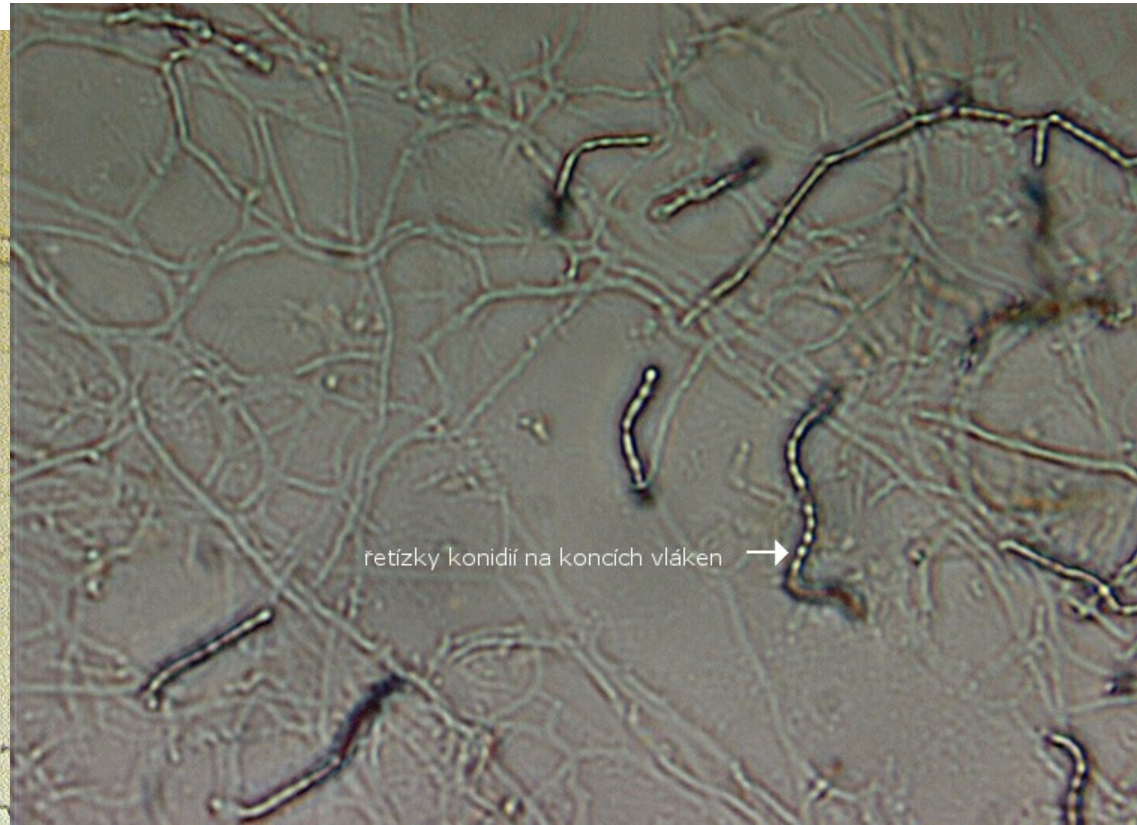
Rhodococcus erythropolis, 100x

fragmentace tyček do koků

I) Krycí sklo

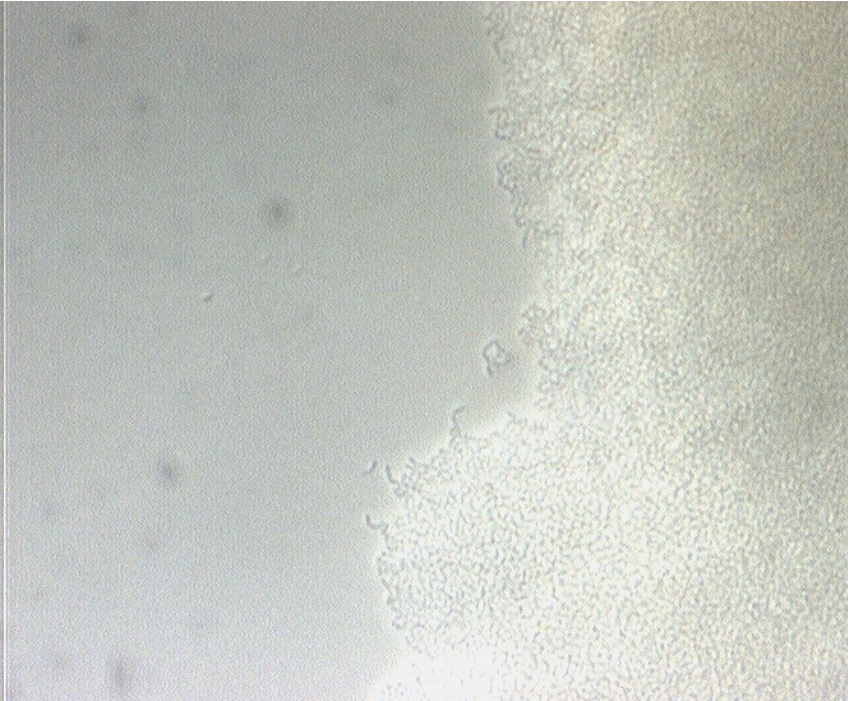


Streptomyces griseus, 40x

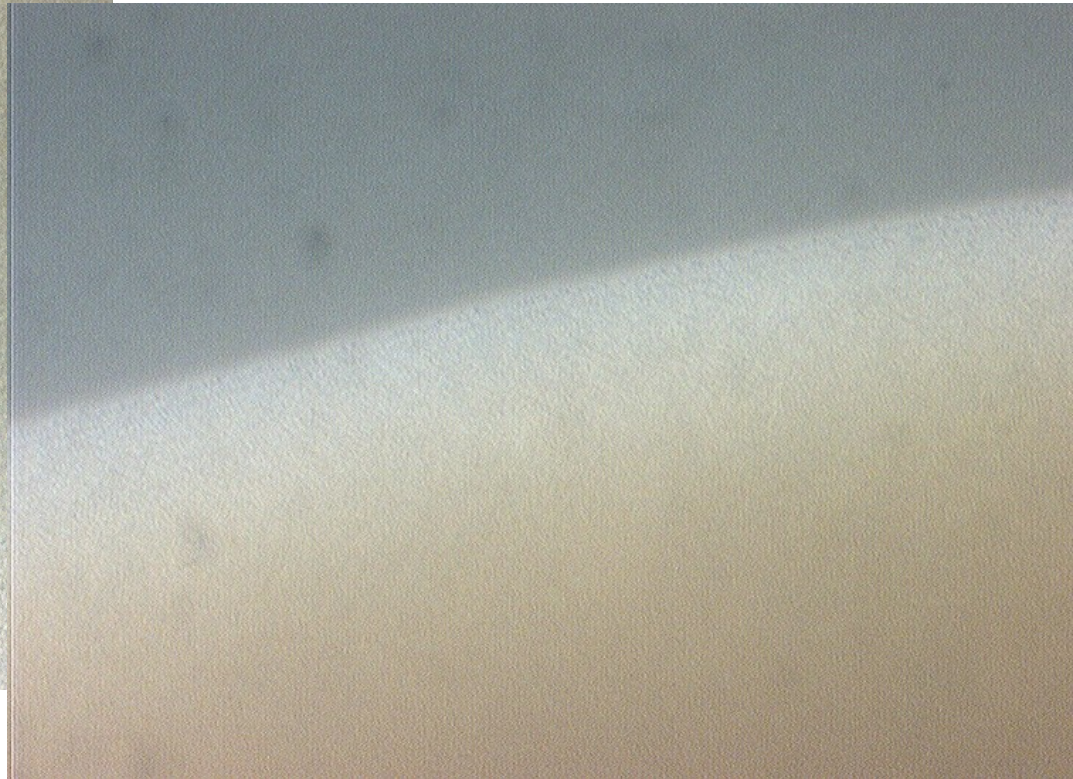


Streptomyces griseus, 100x

II) Podložní sklo



Nocardia carnea CCM 2756



Rhodococcus erythropolis CCM 277

II) Podložní sklo



Streptomyces griseus