

Skříčkové kultury

Martina Mahelová

Skličkové kultury

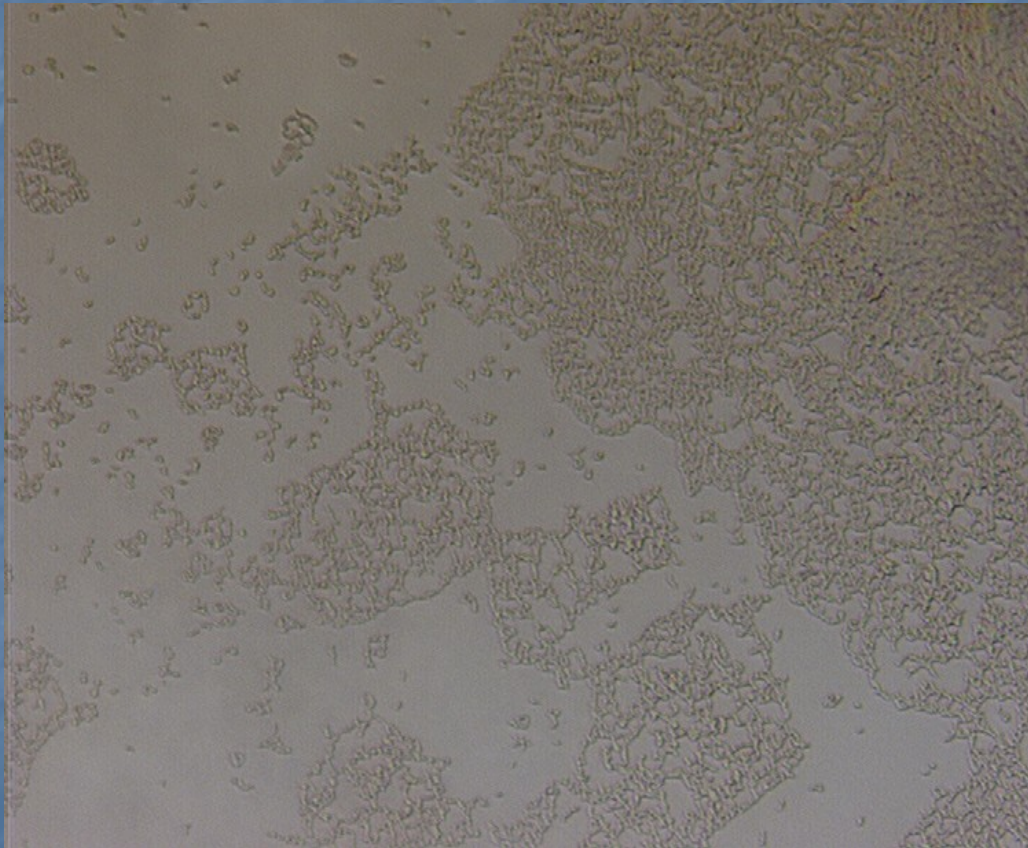
1) Krycí sklíčka

- použité kmeny:

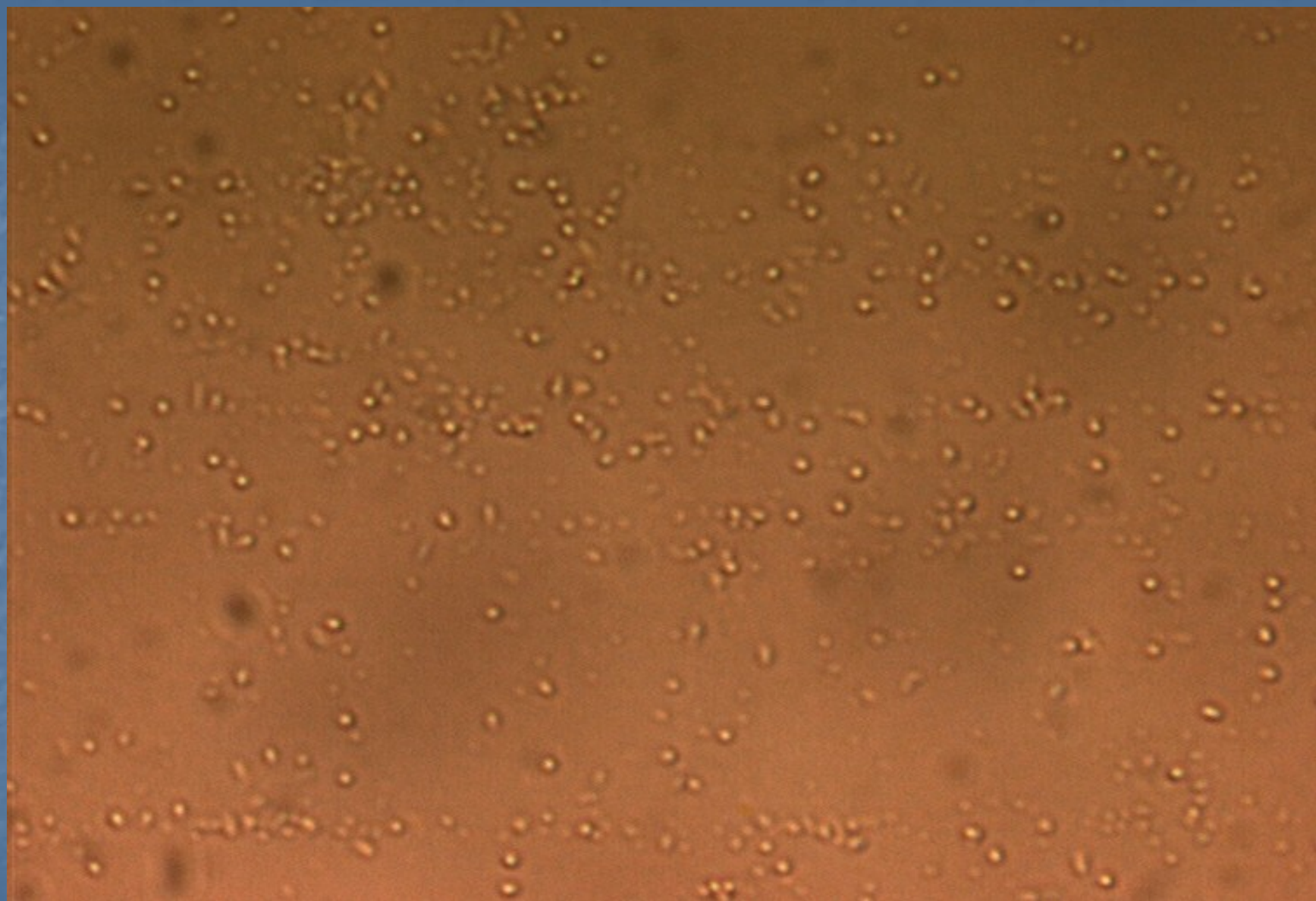
- *Rhodococcus erythropolis* CCM 277
- *Nocardia carnea* CCM 2756
- *Streptomyces griceus*

- pozorovány pod imerzí (zvětšení 1000x) v
Nomarského kontrastu

1) *Rhodococcus erythropolis*

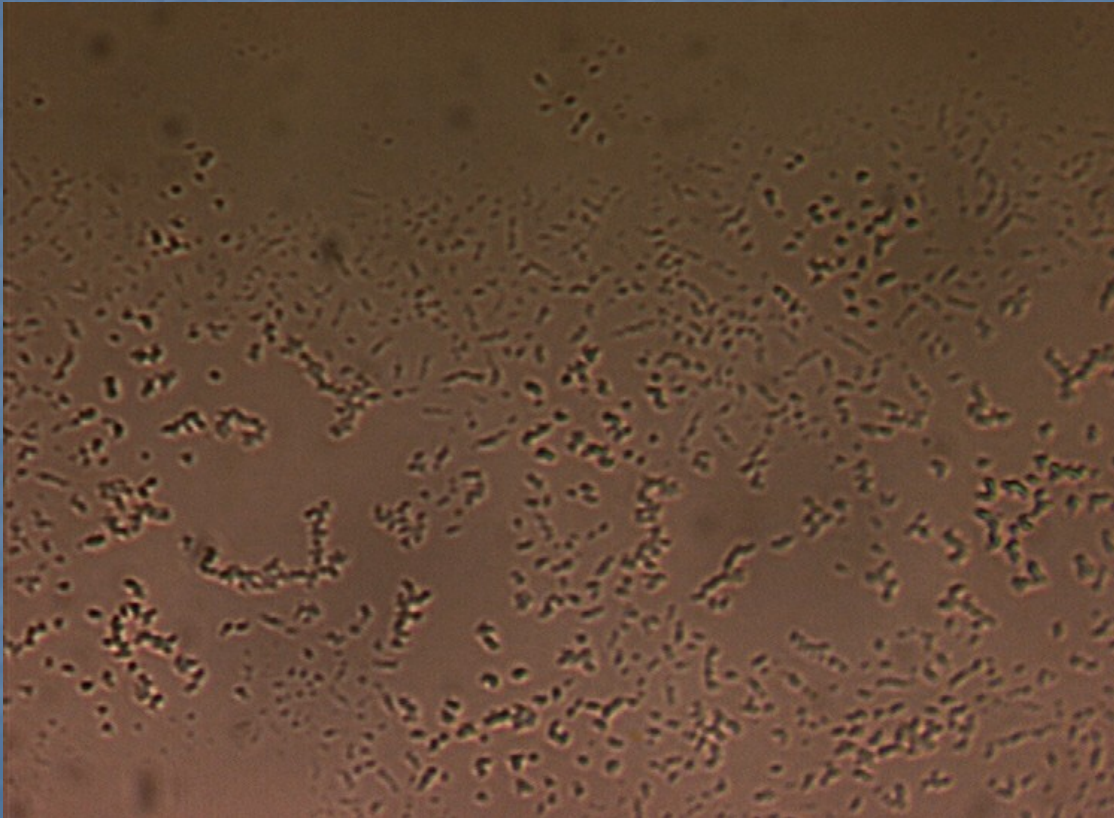


G+ krátké i delší
tyčky
fragmentující na
nepravidelné
tyčky a koky



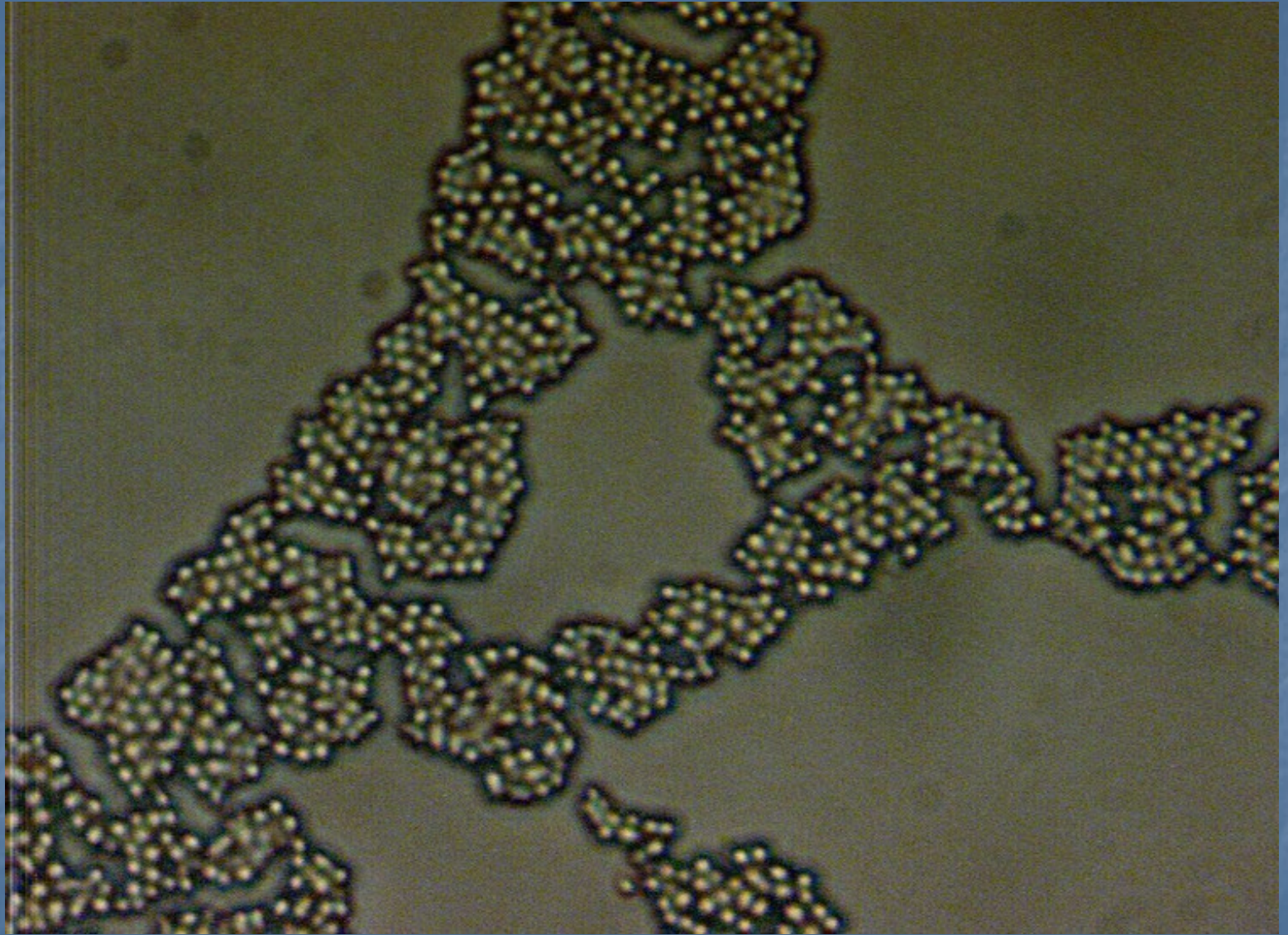


2) *Nocardia carnea*

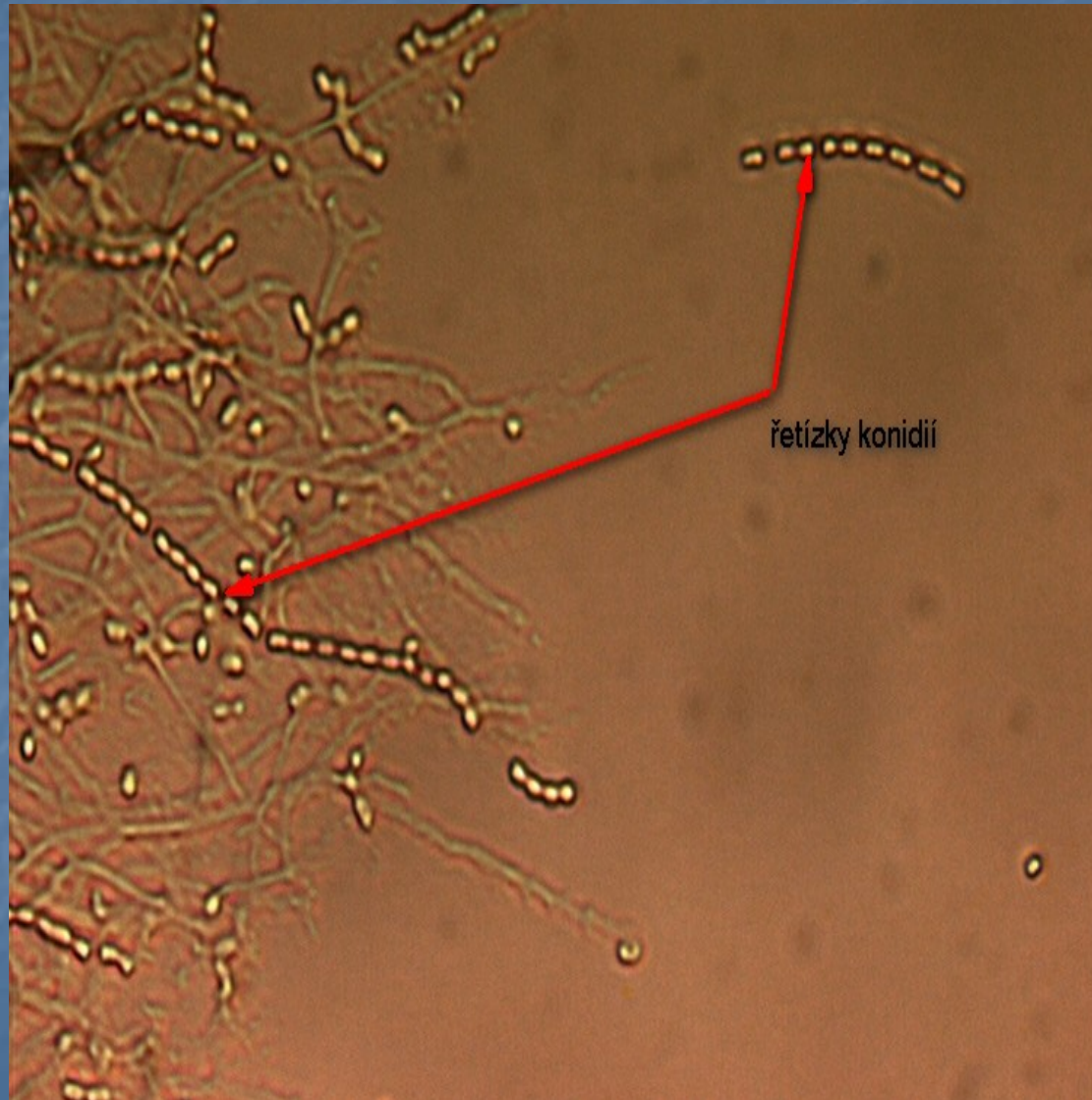


G+ či
gramvariabilní
tyčky či vlákna
rozpadající se
na krátké tyčky
a koky





3) *Streptomyces griseus*





Skličkové kultury

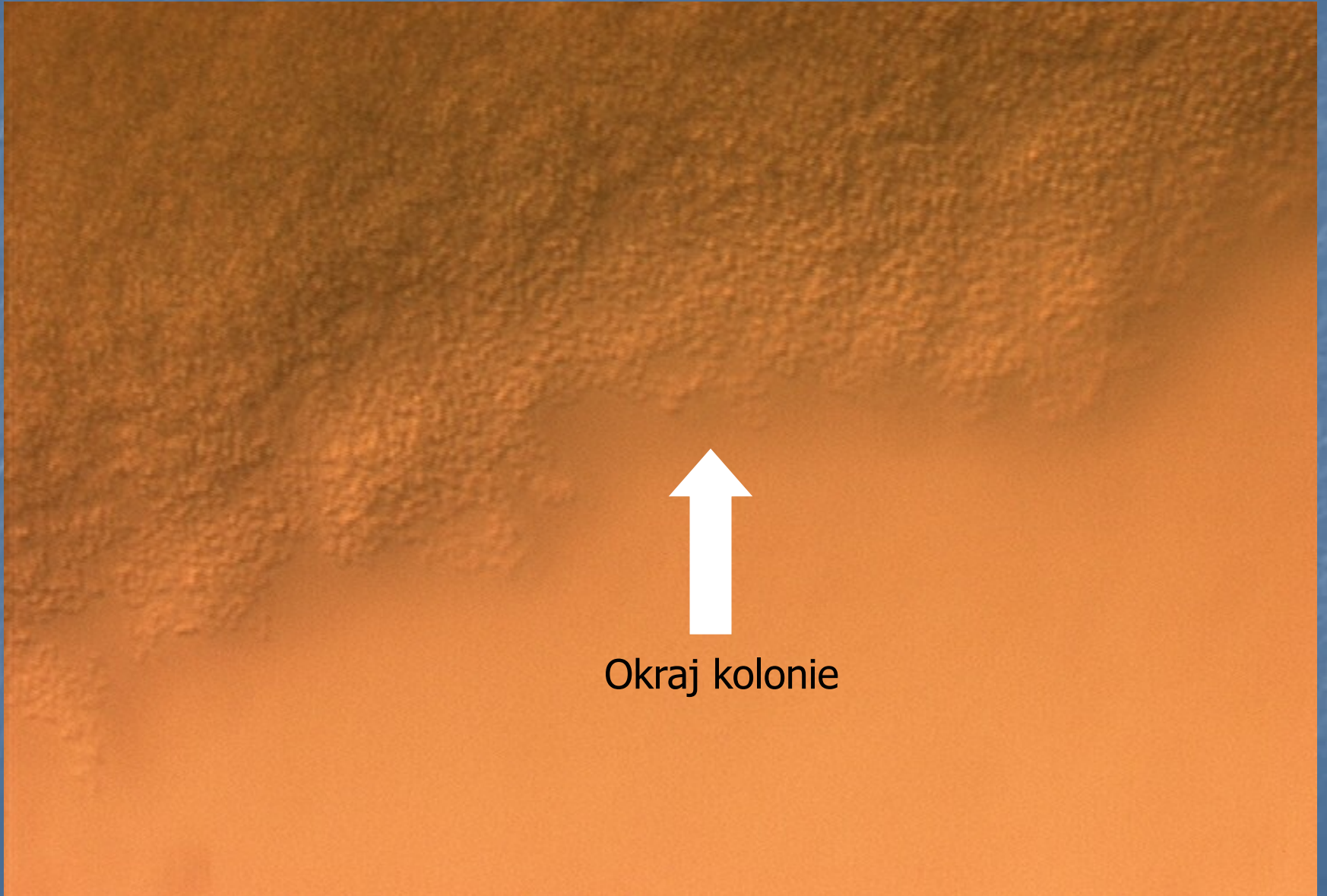
2) Podložní sklička

- použité kmeny:

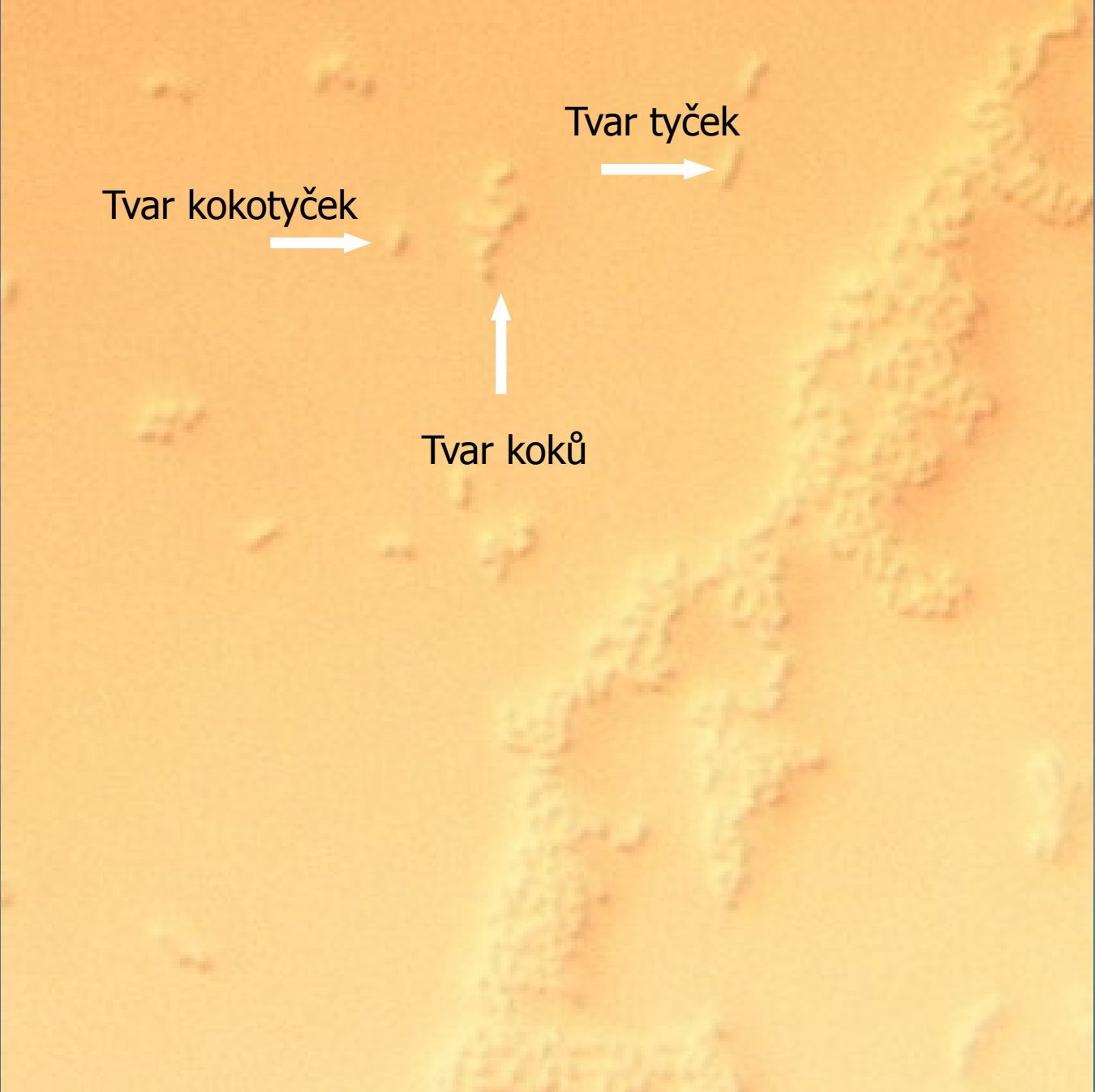
- *Rhodococcus erythropolis* CCM 277
- *Nocardia carnea* CCM 2756
- *Streptomyces griceus*

- pozorovány pod zvětšením 200x či 400x v
Nomarského kontrastu

1) Rhodococcus erythropolis



Okraj kolonie



Tvar kokotyček



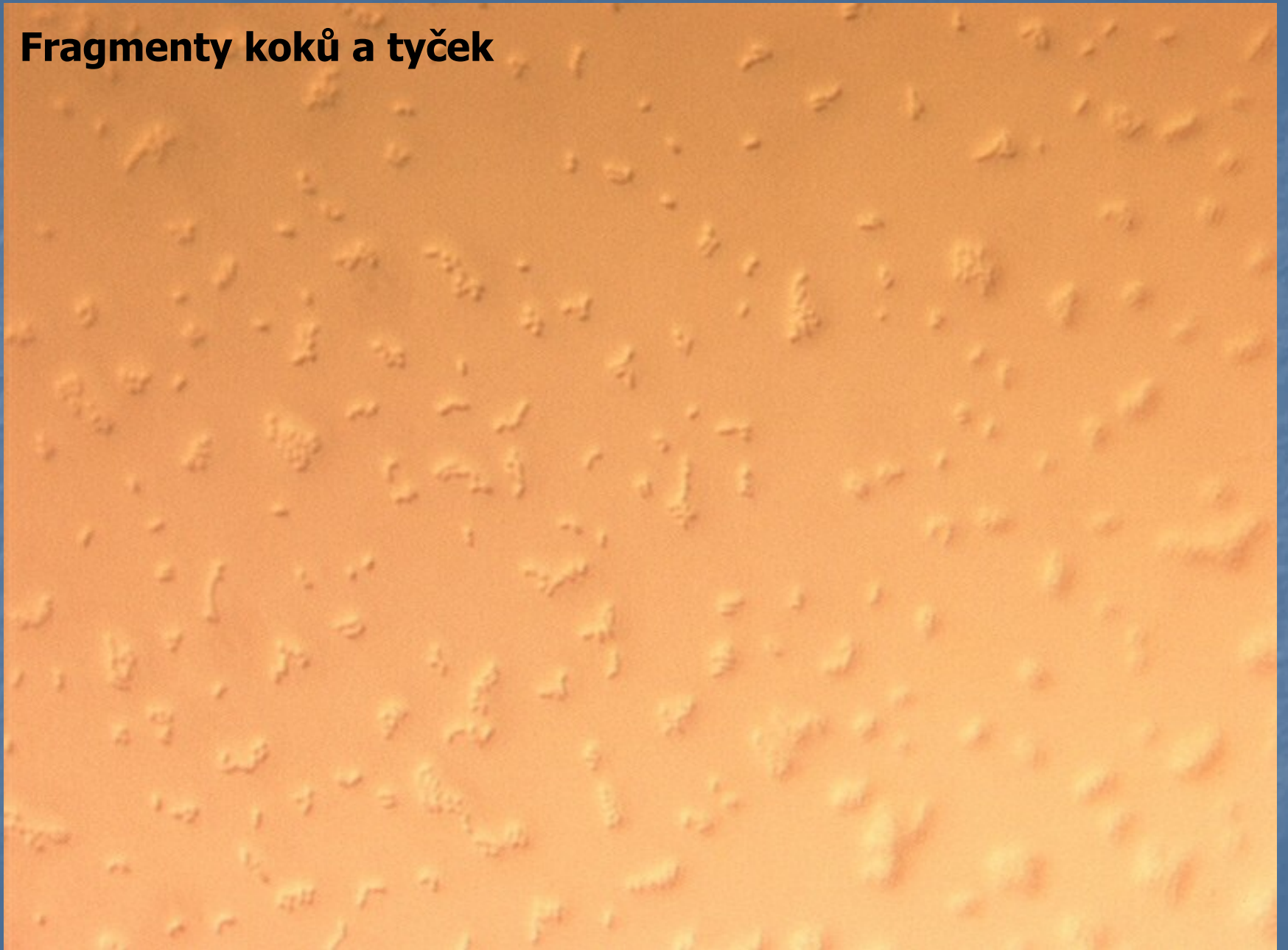
Tvar tyček



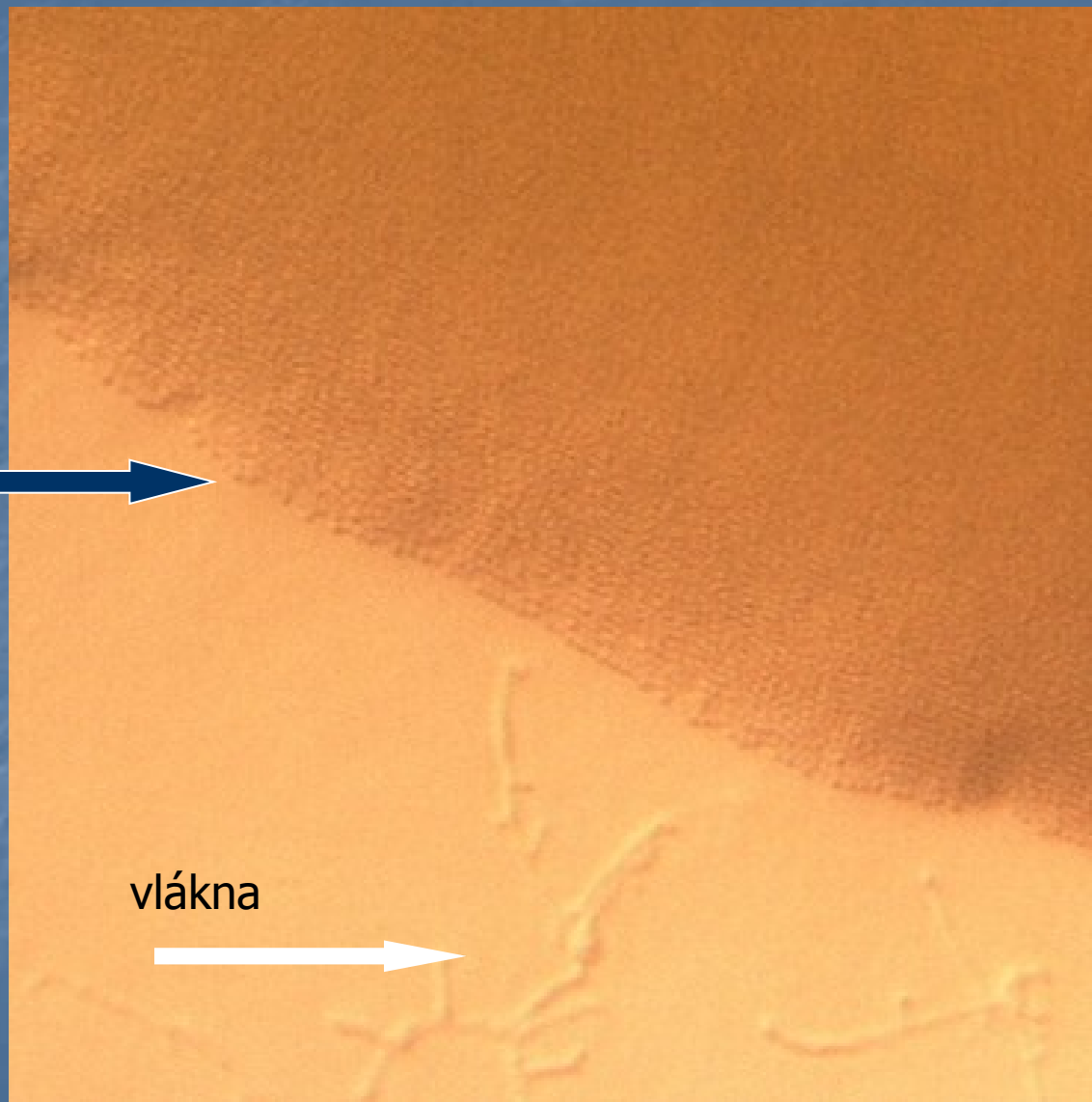
Tvar koků



Fragmenty koků a tyček



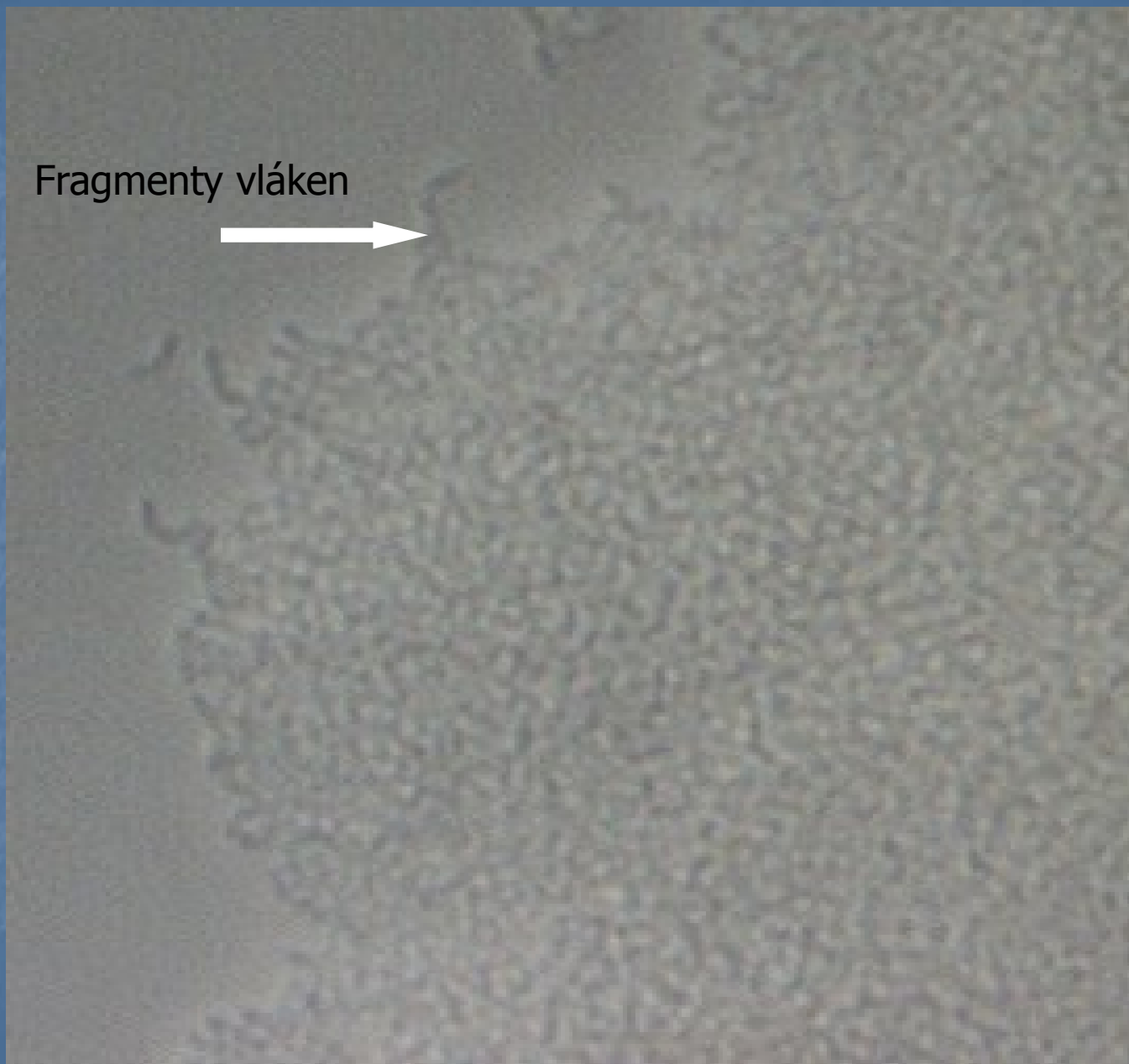
2) *Nocardia carnea*



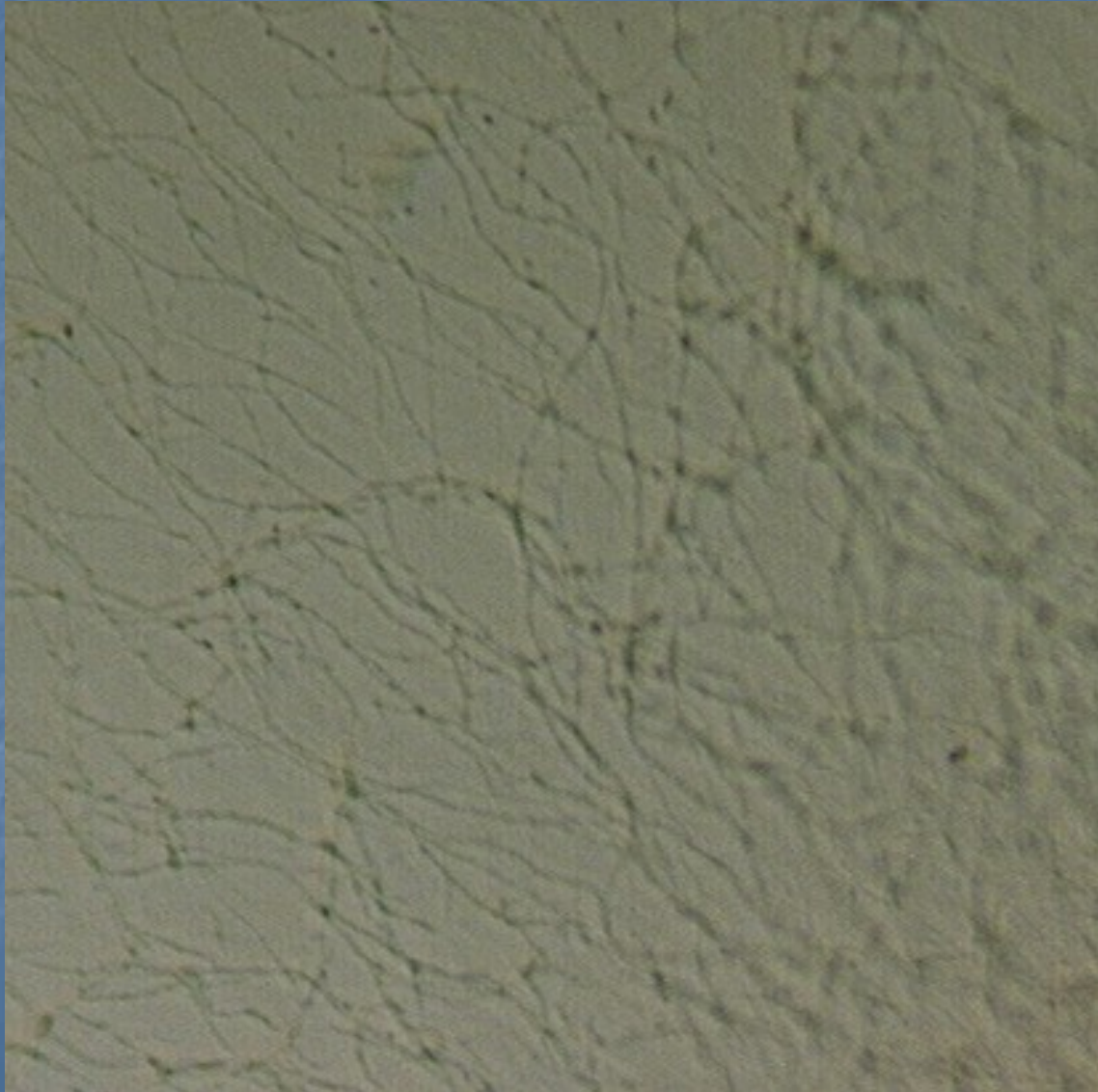
Okraj kolonie

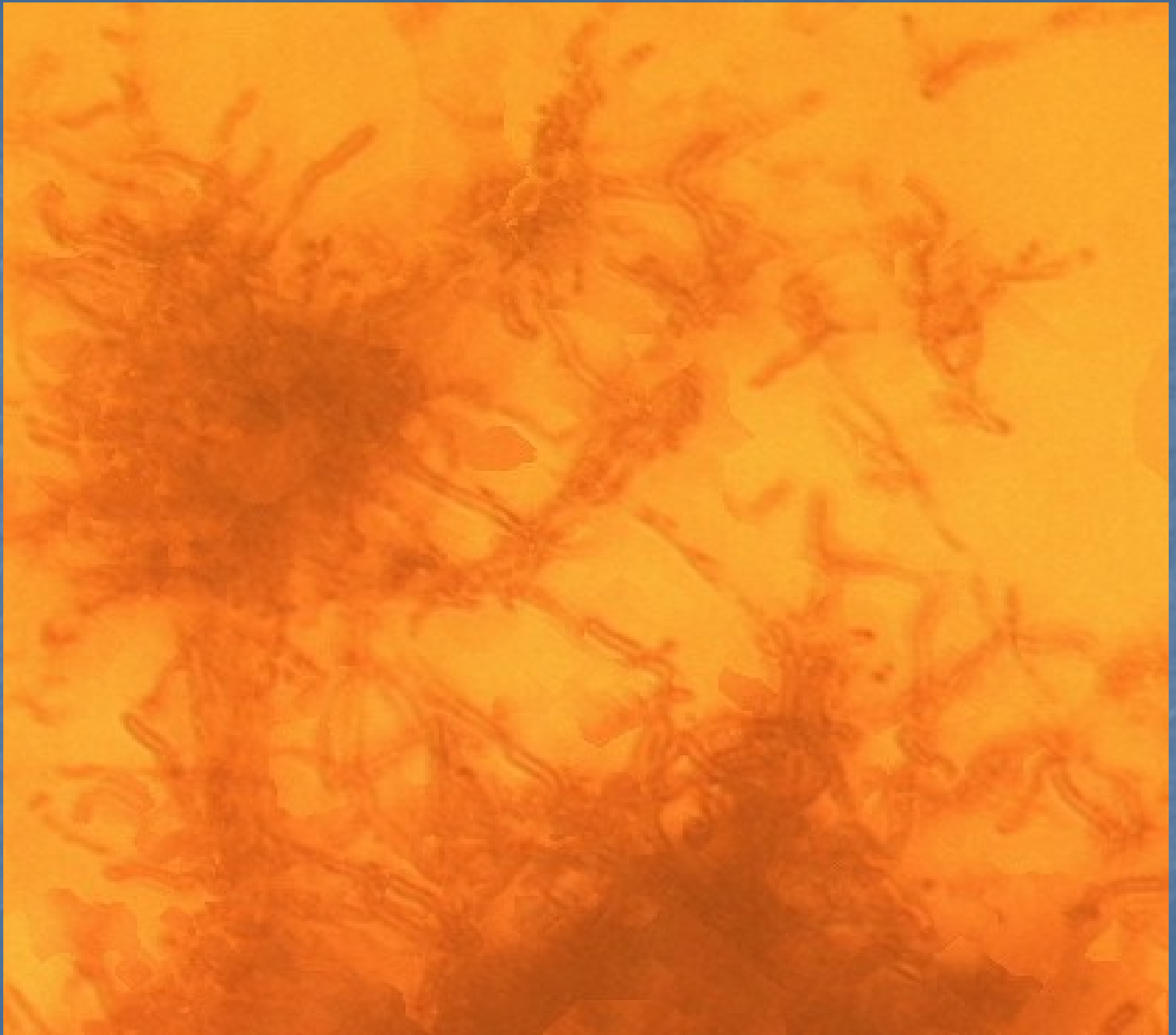
vlákna


Fragmenty vláken



3) *Streptomyces griseus*





A microscopic image showing numerous small, dark, irregularly shaped spores scattered across a light-colored, textured surface. The spores appear to be released from a source, possibly a mold or a biological specimen. The background is a light, slightly grainy surface.

Uvolněné konidie