

Den	Q [m3.s-1]	P	ki	(ki-1)2	(ki-1)3	Φsp	Qp
1	324	2.22930	1.42226	0.17830	0.07529	4.58000	338.81326
2	263	5.41401	1.15449	0.02387	0.00369	1.94000	274.82680
3	262	8.59873	1.15010	0.02253	0.00338	1.49000	263.92002
4	252	11.78344	1.10620	0.01128	0.00120	1.17000	256.16409
5	250	14.96815	1.09742	0.00949	0.00092	0.95000	250.83188
6	241	18.15287	1.05792	0.00335	0.00019	0.73000	245.49968
7	240	21.33758	1.05353	0.00287	0.00015	0.68000	244.28781
8	237	24.52229	1.04036	0.00163	0.00007	0.54000	240.89459
9	237	27.70701	1.04036	0.00163	0.00007	0.40000	237.50137
10	234	30.89172	1.02719	0.00074	0.00002	0.28000	234.59289
11	232	34.07643	1.01841	0.00034	0.00001	0.16000	231.68442
12	230	37.26115	1.00963	0.00009	0.00000	0.07000	229.50306
13	224	40.44586	0.98329	0.00028	0.00000	-0.02000	227.32171
14	223	43.63057	0.97890	0.00045	-0.00001	-0.11000	225.14035
15	222	46.81529	0.97451	0.00065	-0.00002	-0.18000	223.44374
16	221	50.00000	0.97012	0.00089	-0.00003	-0.25000	221.74713
17	220	53.18471	0.96573	0.00117	-0.00004	-0.32000	220.05052
18	219	56.36943	0.96134	0.00149	-0.00006	-0.37000	218.83865
19	217	59.55414	0.95256	0.00225	-0.00011	-0.43000	217.38442
20	217	62.73885	0.95256	0.00225	-0.00011	-0.48000	216.17255
21	216	65.92357	0.94817	0.00269	-0.00014	-0.53000	214.96069
22	216	69.10828	0.94817	0.00269	-0.00014	-0.58000	213.74882
23	216	72.29299	0.94817	0.00269	-0.00014	-0.63000	212.53696
24	216	75.47771	0.94817	0.00269	-0.00014	-0.67000	211.56746
25	212	78.66242	0.93061	0.00481	-0.00033	-0.70000	210.84035
26	207	81.84713	0.90867	0.00834	-0.00076	-0.73000	210.11323
27	206	85.03185	0.90428	0.00916	-0.00088	-0.78000	208.90136
28	205	88.21656	0.89989	0.01002	-0.00100	-0.82000	207.93187
29	204	91.40127	0.89550	0.01092	-0.00114	-0.86000	206.96238
30	203	94.58599	0.89111	0.01186	-0.00129	-0.89000	206.23526
31	196	97.77070	0.86038	0.01949	-0.00272	-0.93000	205.26577

227.81

0.350912 0.075932

0.01132 0.036131

2.10159

Cv 0.106394

x 227.81

Cs 2.10159

Pv						p (%)	E
MV	0.42226	0.178303	0.07529	227.8065	0.106394		
MV	0.154489	0.023867	0.003687	227.8065	0.106394	0.01	
MV	0.150099	0.02253	0.003382	227.8065	0.106394	0.1	7.29
V	0.106202	0.011279	0.001198	227.8065	0.106394	1	4.02
V	0.097423	0.009491	0.000925	227.8065	0.106394	3	2.63
V	0.057916	0.003354	0.000194	227.8065	0.106394	5	2.02
V	0.053526	0.002865	0.000153	227.8065	0.106394	10	1.18
V	0.040357	0.001629	6.57E-05	227.8065	0.106394	20	0.42
V	0.040357	0.001629	6.57E-05	227.8065	0.106394	25	0.25
V	0.027188	0.000739	2.01E-05	227.8065	0.106394	30	0.03
V	0.018408	0.000339	6.24E-06	227.8065	0.106394	40	-0.23
V	0.009629	9.27E-05	8.93E-07	227.8065	0.106394	50	-0.4
P	-0.01671	0.000279	-4.7E-06	227.8065	0.106394	60	-0.5
P	-0.0211	0.000445	-9.4E-06	227.8065	0.106394	70	-0.57
P	-0.02549	0.00065	-1.7E-05	227.8065	0.106394	75	-0.61
P	-0.02988	0.000893	-2.7E-05	227.8065	0.106394	80	-0.62
P	-0.03427	0.001174	-4E-05	227.8065	0.106394	90	-0.65
P	-0.03866	0.001494	-5.8E-05	227.8065	0.106394	95	-0.66
S	-0.04744	0.00225	-0.00011	227.8065	0.106394	97	-0.66
S	-0.04744	0.00225	-0.00011	227.8065	0.106394	99	-0.67
S	-0.05183	0.002686	-0.00014	227.8065	0.106394	99.9	-0.67
S	-0.05183	0.002686	-0.00014	227.8065	0.106394		
S	-0.05183	0.002686	-0.00014	227.8065	0.106394		
S	-0.05183	0.002686	-0.00014	227.8065	0.106394		
S	-0.06939	0.004814	-0.00033	227.8065	0.106394		
S	-0.09133	0.008342	-0.00076	227.8065	0.106394		
S	-0.09572	0.009163	-0.00088	227.8065	0.106394		
MS	-0.10011	0.010023	-0.001	227.8065	0.106394		
MS	-0.1045	0.010921	-0.00114	227.8065	0.106394		
MS	-0.10889	0.011858	-0.00129	227.8065	0.106394		
MS	-0.13962	0.019494	-0.00272	227.8065	0.106394		

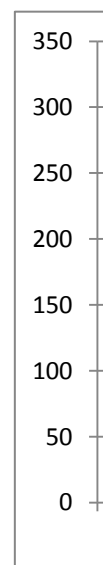
q

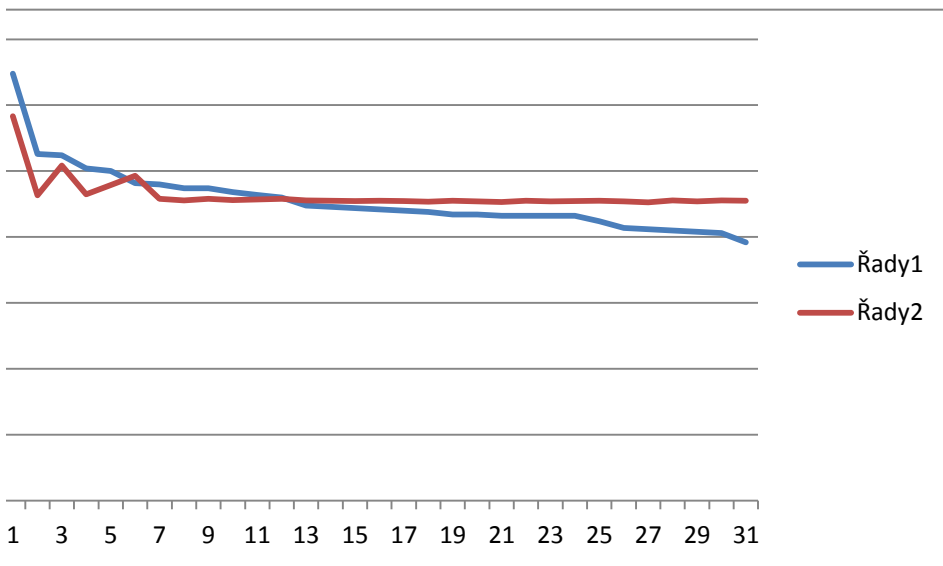
p

qp

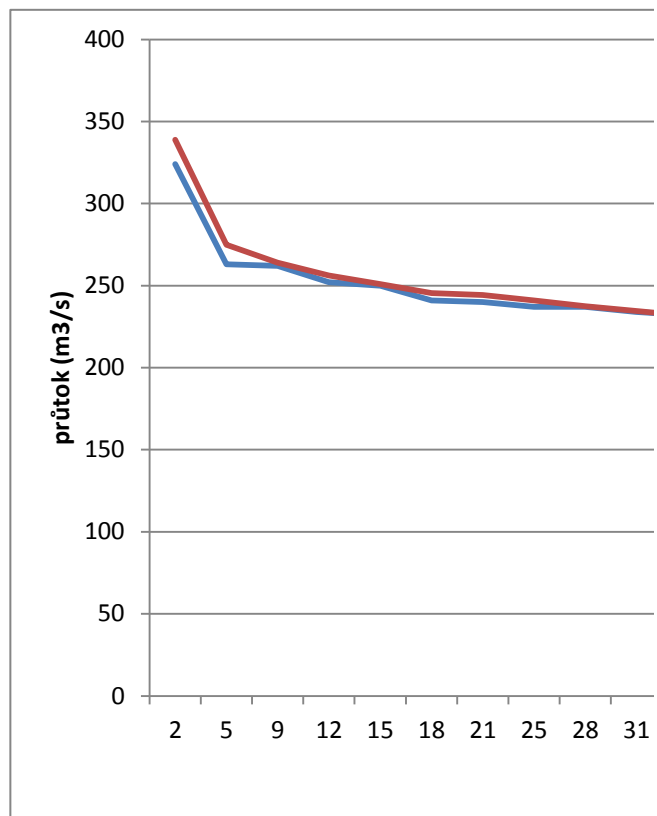
kp = (E*v)+1	Q=Qprum*kp		
		0.106394	
1.775613994	404.496	0.106394	1.775614
1.427704836	464.102	0.106394	1.427705
1.279816845	370.762	0.106394	1.279817
1.21491636	287.351	0.106394	1.214916
1.125545201	265.505	0.106394	1.125545
1.04468558	202.947	0.106394	1.044686
1.026598559	180.108	0.106394	1.026599
1.003191827	163.227	0.106394	1.003192
0.975529325	133.438	0.106394	0.975529
0.957442305	109.606	0.106394	0.957442
0.946802881	88.753	0.106394	0.946803
0.939355284	69.8863	0.106394	0.939355
0.935099515	60.9494	0.106394	0.9351
0.934035573	52.0125	0.106394	0.934036
0.930843745	32.1527	0.106394	0.930844
0.929779803	21.2299	0.106394	0.92978
0.929779803	15.2719	0.106394	0.92978
0.928715861	8.32103	0.106394	0.928716
0.928715861	3.35609	0.106394	0.928716

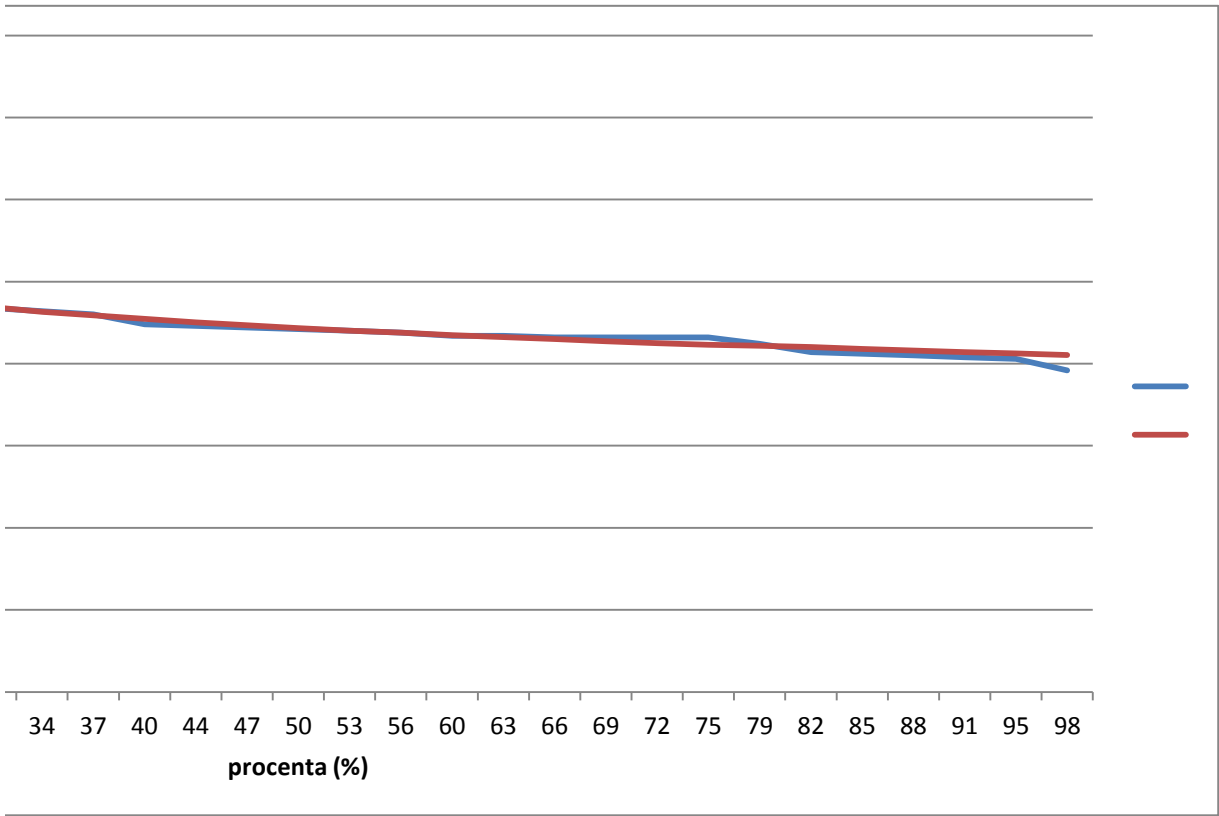
P	X	Q [m ³ .s ⁻¹]	
2.287582	2.287582	324	291.5946
5.555556	5.555556	263	231.6306
8.823529	8.823529	262	254.1253
12.0915	12.0915	252	232.3485
15.35948	15.35948	250	239.4454
18.62745	18.62745	241	246.5424
21.89542	21.89542	240	229.0193
25.1634	25.1634	237	227.8636
28.43137	28.43137	237	229.0074
31.69935	31.69935	234	228.0334
34.96732	34.96732	232	228.4698
38.23529	38.23529	230	228.9063
41.50327	41.50327	224	227.7263
44.77124	44.77124	223	227.552
48.03922	48.03922	222	227.3778
51.30719	51.30719	221	227.6341
54.57516	54.57516	220	227.2032
57.84314	57.84314	219	226.7723
61.11111	61.11111	217	227.6085
64.37908	64.37908	217	227.0263
67.64706	67.64706	216	226.4442
70.91503	70.91503	216	227.6361
74.18301	74.18301	216	227.0278
77.45098	77.45098	216	227.3074
80.71895	80.71895	212	227.6475
83.98693	83.98693	207	226.9252
87.2549	87.2549	206	226.2028
90.52288	90.52288	205	227.6949
93.79085	93.79085	204	226.9979
97.05882	97.05882	203	227.7998
100.3268	100.3268	196	227.4706





2.229299	324	338.8133
5.414013	263	274.8268
8.598726	262	263.92
11.78344	252	256.1641
14.96815	250	250.8319
18.15287	241	245.4997
21.33758	240	244.2878
24.52229	237	240.8946
27.70701	237	237.5014
30.89172	234	234.5929
34.07643	232	231.6844
37.26115	230	229.5031
40.44586	224	227.3217
43.63057	223	225.1403
46.81529	222	223.4437
50	221	221.7471
53.18471	220	220.0505
56.36943	219	218.8387
59.55414	217	217.3844
62.73885	217	216.1726
65.92357	216	214.9607
69.10828	216	213.7488
72.29299	216	212.537
75.47771	216	211.5675
78.66242	212	210.8403
81.84713	207	210.1132
85.03185	206	208.9014
88.21656	205	207.9319
91.40127	204	206.9624
94.58599	203	206.2353
97.7707	196	205.2658





teoretická křivka
empirická křivka

den v měsí Q		2.229299	4.58	a
1.	250	5.414013		b
2.	237	8.598726		c
3.	216	11.78344		d
4.	216	14.96815		
5.	216	18.15287		p
6.	219	21.33758		
7.	216	24.52229		pořadnice
8.	237	27.70701		
9.	224	30.89172		
10.	205	34.07643		
11.	232	37.26115		
12.	252	40.44586		
13.	240	43.63057		
14.	230	46.81529		
15.	217	50		
16.	203	53.18471		
17.	196	56.36943		
18.	223	59.55414		
19.	221	62.73885		
20.	222	65.92357		
21.	207	69.10828		
22.	204	72.29299		
23.	206	75.47771		
24.	212	78.66242		
25.	220	81.84713		
26.	217	85.03185		
27.	234	88.21656		
28.	241	91.40127		
29.	263	94.58599		
30.	262	97.7707		
31.	324			